

NEWSLETTER



NOVEMBER, 1965



Golf Course Superintendents Association OF NEW ENGLAND



President—

LEON V. ST. PIERRE
Longmeadow Country Club
51 Fenwood Road
Longmeadow 6, Mass.
Phone LO 7-5562

First Vice-President—

ANTHONY CARANCI JR.
Ledgemont Country Club
22 Hillview Drive
North Providence 4, R. I.
Phone PA 3-1688

Second Vice-President—

RICHARD C. BLAKE
Mt. Pleasant Country Club
211 Sewall Street
Boylston, Mass.
Phone 869-2737

Secretary—

FLOYD N. WIGET
Bellevue Golf Club
23 Lynn Falls Parkway
Saugus, Mass.
233-1353

Treasurer—

ARTHUR L. CODY
Wollaston Golf Club
Phone Supt. Office at Club
GR 2-3535
Home GR 2-7913
19 Ardell Street
No. Quincy, Mass.

Trustee—

N. J. SPERANDIO
Concord Country Club
Concord, Mass.
Phone EM 9-4723

Trustee—

ALBERT L. ALLEN
Kernwood Country Club
Salem, Mass.
Phone PI 4-7783

Trustee—

WILLIAM ASH
9 Patton Street
No. Dartmouth, Mass.
Phone WY 3-8767

Finance Committee Chairman—

WILLIAM ASH
9 Patton Street
No. Dartmouth, Mass.
Phone WY 3-8767

Educational Committee Chairman—

THOMAS CURRAN
Oak Hill Country Club
37 Parker Street
Fitchburg, Mass.
Phone DI 2-9198

Golf Committee Chairman—

Edward J. Murphy
Lexington Country Club
194 Oxbow Road
Wayland, Mass.
Phone 358-7410

Newsletter Committee Chairman—

MANUEL N. FRANCIS
Belmont Country Club
387 Davis Road
Bedford, Mass.
Phone 275-8830

Past President—

JOSEPH BUTLER
United Shoe Country Club
3 Ridgewood Terrace
Beverly, Mass.
Phone WA 2-1263

Golf Course Superintendents Association

NOVEMBER MEETING

The November meeting was held at the Oyster Harbors Golf Club. The nominating committee proposed the following candidates at the meeting.

President	- Leon St. Pierre
1st V P	- Anthony Caranci
2nd V P	- Richard Blake
Secretary	- Tom Curran
Treasurer	- Arthur Cody
Educational	- Robert Grant
Finance	- William Ash
Trustee	- Joseph Butler
Golf	- Edward Murphy
Newsletter	- Manuel Francis

NEXT MEETING

The next meeting will be December 6th at the Waltham Field Station.

Program:

Business meeting	- 10:30
Lunch	- 12:30
Educational meeting	- 1:30

Feature: The Castor Oil Story in regards to maintaining and servicing equipment.

NEW ASSOCIATE MEMBERS

Leon Patterson
Suffield Country Club
Suffield, Connecticut

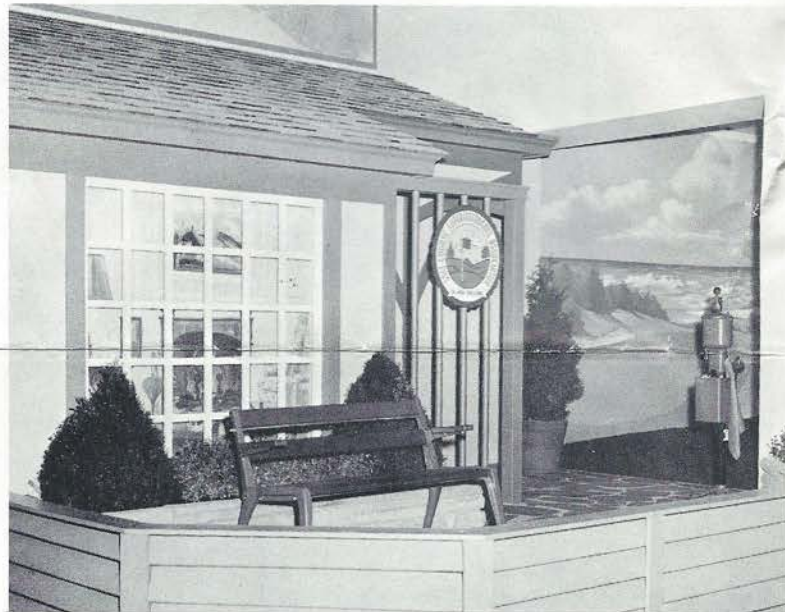
Dave Mank
Clausons Golf Club
North Falmouth, Massachusetts

Mark Azza
Highland Country Club
Attleboro, Massachusetts

CHRISTMAS PARTY

Remember the Christmas Party, December 16th at the Framingham Country Club. If you don't have your ticket you had better hurry as there are only a few left. Tickets may be purchased from the dealers, Leon St. Pierre, Lou Duval, Dick Blake, and Tony Caranci. See you there.

NEW ENGLAND SUPERINTENDENTS FEATURE 'GOLF ON CAPE COD'



For the second consecutive year the New England Golf Course Superintendents Association held a colorful exhibit, in the Massachusetts Building, featuring a large mural of a seaside golf course on Cape Cod. In the foreground, a contoured six hole putting green gave added effect.

A synthetic nylon grass with a rubber base was used, because from past experience, live turf could not handle the heavy traffic for a nine-day exhibit, such as this one was, and also, the turf would after a short duration give unpleasant odors.

This synthetic grass made putting almost realistic, however, putting against the grain ... much slower.

The New England Governors and their families had a private showing of the exhibit on Sunday, September 19th. They enthusiastically tried their skill at putting on the green.

Fall sport fashions were highlighted on the green between 2:00 P.M. and 8:00 P.M. with models furnished by one of our Springfield department stores.

Forty members of the Association took time out from their busy schedule to staff the exhibit.

The Superintendents made a natty appearance with their maize colored golf hats embellished with the Association's emblem.

Arthur E. Anderson, recently retired Superintendent of the Brae Burn Country Club, West Newton, Massachusetts, was the co-ordinator of personnel and Leon V. St. Pierre, President of the New England Association, was general chairman.

Golf Course Superintendents Association

NOVEMBER MEETING

The November meeting was held at the Oyster Harbors Golf Club. The nominating committee proposed the following candidates at the meeting.

President	- Leon St. Pierre
1st V P	- Anthony Caranci
2nd V P	- Richard Blake
Secretary	- Tom Curran
Treasurer	- Arthur Cody
Educational	- Robert Grant
Finance	- William Ash
Trustee	- Joseph Butler
Golf	- Edward Murphy
Newsletter	- Manuel Francis

NEXT MEETING

The next meeting will be December 6th at the Waltham Field Station.

Program:

Business meeting	- 10:30
Lunch	- 12:30
Educational meeting	- 1:30

Feature: The Castor Oil Story in regards to maintaining and servicing equipment.

NEW ASSOCIATE MEMBERS

Leon Patterson
Suffield Country Club
Suffield, Connecticut

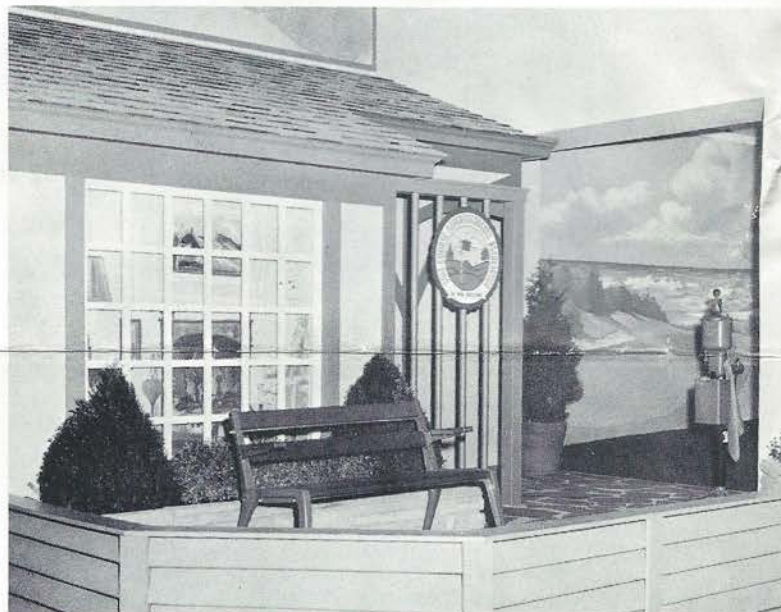
Dave Mank
Clausons Golf Club
North Falmouth, Massachusetts

Mark Azza
Highland Country Club
Attleboro, Massachusetts

CHRISTMAS PARTY

Remember the Christmas Party, December 16th at the Framingham Country Club. If you don't have your ticket you had better hurry as there are only a few left. Tickets may be purchased from the dealers, Leon St. Pierre, Lou Duval, Dick Blake, and Tony Caranci. See you there.

NEW ENGLAND SUPERINTENDENTS FEATURE 'GOLF ON CAPE COD'



For the second consecutive year the New England Golf Course Superintendents Association held a colorful exhibit, in the Massachusetts Building, featuring a large mural of a seaside golf course on Cape Cod. In the foreground, a contoured six hole putting green gave added effect.

A synthetic nylon grass with a rubber base was used, because from past experience, live turf could not handle the heavy traffic for a nine-day exhibit, such as this one was, and also, the turf would after a short duration give unpleasant odors.

This synthetic grass made putting almost realistic, however, putting against the grain ... much slower.

The New England Governors and their families had a private showing of the exhibit on Sunday, September 19th. They enthusiastically tried their skill at putting on the green.

Fall sport fashions were highlighted on the green between 2:00 P.M. and 8:00 P.M. with models furnished by one of our Springfield department stores.

Forty members of the Association took time out from their busy schedule to staff the exhibit.

The Superintendents made a natty appearance with their maize colored golf hats embellished with the Association's emblem.

Arthur E. Anderson, recently retired Superintendent of the Brae Burn Country Club, West Newton, Massachusetts, was the co-ordinator of personnel and Leon V. St. Pierre, President of the New England Association, was general chairman.

CONTRIBUTIONS FROM OUR FRIENDS

Grounds Equipment Co., Inc.
383 Boylston Street
Newton Centre, Massachusetts

Abbott Spray and Farm Equipment Co.
Waltham Street
Lexington, Massachusetts

The Charles C. Hart Seed Co.
Wethersfield, Connecticut

The Clapper Co.
1121 Washington Street
West Newton, Massachusetts

Sil Paulini Inc.
Loam Specialists
Hopkinton - 435-4370

Geoffrey S. Cornish
Golf Course Architect
Fiddler's Green
Amherst, Massachusetts

Larchmont Irrigation Co.
Larchmont Lane
Lexington, Massachusetts

Wyandotte Chemical Corp.
709 Salada Building
Boston, Massachusetts

Lee Patten Seed Co.
20 Beck Road
Arlington, Massachusetts

Stanley S. Philipkoski
Sales Representative
Stauffer Chemical Co.
380 Madison Avenue
New York 17, New York

The Kenneth Barrie Co.
4140 and 4140A Washington Street
Roslindale, Massachusetts

J. F. Aveni
Lu Soil-Soil Conditioner
Minerals & Chemicals Philipp Corp.
25 Concord Avenue
Belmont, Massachusetts

Karandrew Turf Farms Inc.
Sam Mitchell, Sales Representative
18 Old Randolph Street
Canton, Massachusetts

Turf Equipment Co.
28 Rutledge Road
Natick, Massachusetts

The Hubbard Hall Chemical Co.
P. O. Box 790
Waterbury, Connecticut

Singleton Irrigations Systems, Inc.
Manchester-By-The-Sea, Massachusetts

Tom Irwin Co.
Bennet Hill Road
Rowley, Massachusetts

Johns Manville Sales Corp.
150 Causeway Street
Boston, Massachusetts

Philip A. Wogan
Golf Course Architect
21 Budleigh Avenue
Beverly, Massachusetts

Sawtelle Brothers
Jct. Routes 128 and 62
Danvers, Massachusetts

Golf Course Superintendents
Association
OF NEW ENGLAND



MANUEL N. FRANCIS
Belmont Country Club
387 Davis Road
Bedford, Mass.
Phone 275-8830

