

NEWSLETTER

MAY, 1970



Golf Course Superintendents Association

OF NEW ENGLAND, INC.

Sponsors and administrators of the Lawrence S. Dickinson Scholarship Fund — Awarded yearly to deserving Turf Management Students.

OUR MAN AT THE TOP

Ben Chlevin won't take any bows. He refuses to paint his own wagon. Like a man spurred on by his own efforts, he allows a little hint of self-satisfaction to creep into his smile but snaps out of it when he thinks of the job that lies ahead.

Chlevin is our leader, the executive director of the Golf Course Superintendents Association of America. That's a fancy enough title to remember, let alone recite. It's a big one, though, and Ben realizes it often draws a lot of sniper action.

The articulate Chlevin was caught between bogies last month at the golf writers' tournament in Myrtle Beach, S. C. He was, as always happy to review and preview the whereabouts of the superintendent in regard to economic and social standing.

A quick-trigger answer was in the offing. Of the past, Ben says it got better. Of the future, he maintains it will get better.

"Right now we in the National are up to our elbows in developing and presenting an educational program", Chlevin knocks on the door of the group's top-priority subject. "I think this comprises our heaviest concentration at the moment — collecting, preparing and making valuable information available to our membership."

Chlevin cites the healthy expense involved in such a project which should answer the age-old question of the typical organization member — "where does the money go?"

"We have a great deal of faith in this venture of bringing our members up to date on the happenings of their profession and even some outside it", Ben started to peel off some of the greenback outlay for the program. "In the end, though, it will have been worth it. Our membership will have a sharp awareness of everything required to improve its individual standing on the ladder of success."

The affable Chlevin also qualifies for the good sportsmanship award. He doesn't mind criticism when it's offered in a

constructive vein. "None of us is perfect", he chimes. "Certainly, we aren't in the position to declare ourselves infallible at the National. Therefore, we entertain all suggestions presented to upgrade the overall situation."



The New England Association will be happy to know Ben gives its efforts in the public relations field a personal Triple-A rating. "You people have been a leader in your own right", he volunteered a few accolades for the home team. "Through your leadership other sections have adopted a public relations program or are in the process of it. Naturally, I am for a strong public relations effort at all levels."

Chlevin also gave his nod of approval on such things as a solid certification program and attempts to point up the economic and social standing of the superintendent through the use of surveys.

"I think surveys, when conducted properly, are a practical aid to the purpose of upgrading our position in all walks of life", Ben told. "However, they must be accurate. If the answers are fabricated, they could hurt the superintendent in the end."

Chlevin has been in his present capacity with the National since 1965. "I can't act as judge on what has been accomplished in those five years", he concluded. "That's for others to decide. But if there are laurels discovered in the assessment, I certainly don't intend to rest on them. I conduct my job with the idea of never looking back on what has been done but what should be done."

It would seem our fortunes at the top are in good hands.
— Gerry Finn

NEXT MEETING

The next meeting will be at the Oyster Harbors Country Club, Oyster Harbors, Massachusetts, May 4, 1970. Charles Gardner is the superintendent.

Charle started out at the Oyster Harbor Club as the assistant and held that position for five years before moving to the Blue Rock Club as the construction super. After the course was built he was hired to stay as the superintendent and that lasted for four years. In 1961 he joined the GCSA of N. E. the National Associations and at the same time graduated from the Winter School at the University of Massachusetts in 1962.

Charle was one of the founders of the Cape Cod Turf Managers and served as president for two years. In his spare time he has been the super at the Oyster Harbor Club for the past six years.

DIRECTIONS: Take the Mid Cape highway to the Oysterville exit. Then follow the signs to Oyster Harbors.

Directors' Meeting	10:45 a. m.
Regular Meeting	11:15 a. m.
Lunch, downtown at "Wimpees"	12:15 p. m.
Golf Tournament	1:15 p. m.

* * * *

NEW MEMBERS — to be voted on at the meeting at Oyster Harbors: Patrick C. DiPietro, 64 Lincoln Ave., Lynnfield, Massachusetts, Topsfield Country Club; Arthur Moriarty, 1000 Chandler Circle, Andover, Massachusetts, Andover Country Club. Both of the above will be Associate members.

Membership List: The new membership list is being made up. On the list it will not only contain your address, but it will list your club and both office and home phone numbers. If you have not mailed in the card I suggest that you do so that your name won't be left off the list.

Golf Course Superintendents Association



Robert

Norman

DOUBLE TEAMING 'EM

The GCSA has a starry lineup when it comes to the run-down of its board of directors. And two playing an important part in the functioning of the group are New England's two-one offense — twin brothers Norman and Robert Mucciarone.

Norman makes the green way much greener at the Woodland Country Club where he has been burning off his talents for some 15 years.

During that time Woodland has made great strides. Under Norman's direction there has been installed a fairway watering system, the construction of three new holes and rebuilding of most greens and tees.

Norman is a proud family man. He and Mrs. Mucciarone have eight children — the oldest a 19-year-old daughter who is a student at Lesley College in Boston and the youngest two years old.

Norman takes to the golf course whenever he is able and lists travel and all sports as other hobbies.

It's said Bob Mucciarone is the easier going of the two and he has good explanation of the assumption. "I am 10 minutes older than Norman", Bob cracks. "I've had more time to experience world happenings."

Bob will be entering his 11th year at the Dedham Country and Polo Club. And his record there is just as glittering as the other half of the double-teaming super Mucciarones.

He has seen three new greens come into play, rebuilt all the tees and installed 10 holes of irrigation.

Bob's work doesn't stop on the course. He is in charge of indoor and outdoor tennis courts, paddle tennis, skeet range, swimming pool and hockey rinks at Dedham.

Bob is married and the father of three children. Like Norman, his off-duty likes lean to golf and travel.

The New England section is happy to have blossoming among it such a happy family affair. And it feels doubly fortunate to be the home base of the front-running Mucciarone twins.

— Gerry Finn

The following list of members who still owe dues as of 4-15-70, is published at the request of the Board. May we hear from you?

Mr. Antonio Asquino; Mr. A. M. Barney; Mr. Milton S. Brown, Jr. (69 and 70); Mr. John P. Callahan; Mr. Donald Daigle (1969 and 1970); Mr. Clayton E. Daly; Mr. Charles J. Gardner; Mr. Malcolm Haskell (1969 and 1970); Mr. Roger Hines (1969 and 1970); Mr. Bernard K. Keahan (1969 and 1970); Mr. Charles B. Lawrence; Mr. Roy Allen MacIntoch; Mr. John Mello (1969 and 1970); Mr. Edward J. Murphy; Mr. George F. O'Leary; Mr. Leon Patterson; Mr. John J. Petraitis; Mr. Ernest Ruby; Mr. Thomas Scannell; Mr. Joseph F. Silk; Mr. John Smith, Jr.; Mr. Matthew P. Spokas; Mr. Ernest Wolfgang.

A TREASURER'S DREAM

I fell asleep the other night, and while I had a snooze
I dreamed each member stepped right up and
promptly paid his dues.

But when I found 'twas just a dream, I nearly threw a fit.
It's up to you to make it true
Have you paid your dues, YIT!!!!

TED CALLS IT A CAREER

Thirty-nine years with the same golf course comprise pretty good grounds for a happy relationship.

That's just how long Ted Anderson held hands with the Ellinwood Country Club in Athol until he recently announced his retirement.

Ted, whose brother Arthur is one of the stalwarts of the superintendents profession, came to Ellinwood in 1931. Since then his career and the face of the club have progressed to the extent his loss is considered by many a void which will not be completely filled.

Ted got his start in golf through association with Arthur at the Alpine Golf Course in Fitchburg. He remained with his brother for a few years until the call came from Ellinwood.

At first he was discouraged by the wild terrain he discovered in a crude version of a golf course. "It was worse than a cow pasture", Ted chirps. "It was loaded with rocks and boulders and all I could think of was how we could cut the grass."

Anderson was just starting to get into the swing of things when the depression forced Ellinwood officials to turn the course over to the town for the sum of \$1 so that WPA funds could be channeled in to make improvements.

With this unexpected outlay of funds, Ted went to work and made great gains in putting a practical look on the layout. Eventually, the course was returned to the club and Ted was back with the basic problem of securing enough money to keep the improvements going.

One of his happiest moments came when the club purchased its first tractor in the late 40's. The first night Ted was so elated he drove the tractor into the garage and left his car outside.

Over the years, though, Ted's equipment took on a modern glow and he went about producing one of the best-conditioned courses in the area.

Kenny Mildren, who has been appointed Ted's successor, will have the ace in a hole all new superintendents might appreciate. Ted has agreed to stay on at Ellinwood in an advisory capacity.

Ellinwood has expanded to 18 holes and Anderson's know-how will make Mildren's job less taxing. Ted says he'll make it about two days a week and for this the club is ever grateful.

The Andersons — Ted and his wife, Blanche — will continue to live in the remodeled farmhouse-clubhouse Ellinwood has provided for them during their long and enjoyable association.

Ted points out the fact Ellinwood hasn't forgotten those 39 years he spent in pursuit of a well-groomed golfing playground for its members. Unlike many separations of super and club, the career-ending arrangement between Ted and Ellinwood remains a heartening experience for both.

— Gerry Finn

Congratulations — to our Newsletter Committee Chairman, Dean Robertson and his wife Judy on the birth April 14 of their third daughter, Cheryl.

President —
RICHARD C. BLAKE
211 Sewall Street
Boylston, Mass. 01505
Phone 869-2737
Club Affiliation
Mt. Pleasant Country Club

First Vice President —
ROBERT GRANT
22 Patricia Road
Sudbury, Mass. 01776
Phone 443-2671
Club Affiliation
Brae Burn Country Club

Second Vice President —
THOMAS CURRAN
153 Fisher Street
Walpole, Mass. 02081
Phone 668-7221
Club Affiliation
The Country Club

Secretary —
WAYNE ZOPPO
48 Barbary Drive
Seekonk, Mass.
Phone 399-7141
Club Affiliation
Agawam Hunt Club

Treasurer —
LUCIEN DUVAL
R.F. No. 5 Gault Road
Bedford, N. H. 03105
Phone 472-3454
Club Affiliation
Manchester Country Club

Trustee —
RONALD KIRKMAN
25 Green Street
Needham, Mass. 02192
Phone 444-8412
Club Affiliation
Needham Golf Club

Trustee —
ROBERT MUCCIARONE
455 Summer Street
Westwood, Mass. 02090
Phone 329-9682
Club Affiliation
Dedham Country and Polo Club

Trustee —
NORMAN MUCCIARONE
101 Alban Road
Woburn, Mass. 02168
Phone 332-3056
Club Affiliation
Woodland Country Club

Finance Chairman —
NARY SPERANDIO
Concord, Mass. 01742
Phone 369-4723
Club Affiliation
Concord Country Club



Maine Golf Course Superintendents Association

Editor — Jim Diorio, Augusta Country Club, Augusta, Maine

MAY MEETING

The next meeting of the Maine Golf Course Superintendents Association will be held May 5th at the Willowdale Golf Club, Scarborough, Maine. Claude Faulkner is the host superintendent. This is our first outdoors meeting of the season, so let's have a good turnout.

MEETING SCHEDULE

May 5th, Willowdale Golf Club, Scarborough, Maine.
Host Superintendent, Claude Faulkner.

June 2nd, Sanford Country Club, Sanford, Maine.
Host Superintendent, Chalk Dorian

This is a joint meeting with the New Hampshire Golf Course Superintendents Association.

July 7th, Bridgton Highlands Country Club, Bridgton, Maine.
Host Superintendent, Ed Larabee.

August 4th, Penobscot Valley Country Club, Orono, Maine.
Host Superintendent, Jim Brown.

September 1st, Portland Country Club, Portland, Maine.
Host Superintendent, Lloyd Ruby.

October 6th, Gorham Country Club, Gorham, Maine.
Host Superintendent, Ernest Hawkes.

This is our annual Pro-Superintendents Tournament.

PRESIDENT'S MESSAGE

Unfortunately our President was unable to meet our deadline.

FOR HE'S A JOLLY GOOD FELLOW

No matter how high an executive may climb, and how aware he is of public relations, he still may be guilty of personal quirks that annoy the people he deals with. And unless he pauses for an occasional stocktaking, these can become more and more ingrained as years go by.

For instance: Does he talk too fast? This is apt to give people the impression that what he's saying can't bear logical analysis.

Does he have "a million of 'em"? He'd better get a good idea of the other person's tastes before he tells that earthy joke.

Is he a fixer — who picks the lint off the jacket of the man he's talking with? Or a poker, who jabs his companion in the chest with a forefinger? Or perhaps he's a peeker, and can't resist stealing a glance, either secret or open at the papers on another man's desk.

As he becomes one of the older boys, an executive would do well to remember that the good old days are gone forever. A constant reminiscer is one of the world's greatest bores. In the same vein, he should beware of ridiculing a new approach simply because it's never been done before. And, finally, he should avoid becoming a glory-hog, who takes credit for his subordinates' ideas — unless they prove unworkable.

Any man with all these shortcomings would be the office terror. But even one or two can sabotage a man's success with others.

Reprinted from AEtna Agency "The IN Box"

MAINE TURF GRASS CONFERENCE

The MGCSA would like to extend their congratulations to Professor Vaughn Holyoke for the fine job he and his colleagues did in presenting a real fine Turf Grass Conference.

We would also like to thank Dick Blake for his participation and extend our congratulations on his election to the Vice-Presidency of our National Organization.

DEFINITION OF GOLF

Taken from the *New Hampshire Turf Grower* — Cooperative Extension Service in cooperation with the Plant Science Department

"Golf is the simplest looking game in the world when you decide to take it up and the toughest after you have been at it for ten or twelve years. It is probably the only known game a man can play as long as a quarter of a century and then discover that it was too deep for him in the first place.

"Golf is a physical and mental exertion made attractive by the fact that you have to dress for it in a \$200,000 club house. It is what letter-carrying, ditch-digging, and carpet-beating would be if those three tasks had to be performed on the same afternoon in colored socks, jersey, and pants by gouty-looking gentlemen who require a different implement for every mood.

"The game is played on carefully selected grass with little white balls and as many clubs as a player can afford. These little balls cost from fifty cents up and it is possible to support a family of ten people (all adults) for five months on the money represented by balls lost by golfers in a single afternoon.

"A golf course is eighteen holes, seventeen of which are unnecessary and just put around the course to make the game harder. A 'hole' is a tin cup in the center of the 'green'.

"A 'green' is a small patch of grass costing \$1.98 a blade and usually located between a lake and a couple of apple trees, or a lot of 'unfinished excavations' called sand traps. The idea is to get the ball from a given point into each of the eighteen holes in the fewest strokes and the greatest number of words. A favorite expression is: 'I think you're in a trap, I hope.'

"The ball must not be thrown, pushed, or carried. It must be propelled by a bunch of curious-looking implements designed especially to provoke the owner. Each implement has a specific purpose and ultimately some golfers get to know that purpose. However, they are the exceptions.

"After each hole has been completed the golfer counts his strokes. Then he subtracts six and says 'Made that in five. That's one over par. Shall we play for fifty cents on the next hole, too, Ed?' After the final or eighteenth hole the golfer adds his score and stops when he reaches eighty-seven. Then he takes a swim, sings 'Sweet Adeline' with a group of other liars and calls it the end of a perfect day."

..... Unknown



New Hampshire Golf Course Superintendents Association, Inc.

Editor — John J. Barry, Supt. Abeniqui Country Club, Rye, N. H.

MEETING NOTES

The last meeting of the N.H.G.C.S.A. held in the New England Center for Continuing Education, at the University of N. H. gave us the best educational program thus far. Toni Fisher and Jim Mitchel produced an excellent program concerned with turf problems.

Allen Hale of the Waukegan Golf Course was voted in as a regular member and Ed Smith of Fairway Equipment was voted in as an inactive member.

MEETING SCHEDULE

Date	May 6
Location	Nashua Country Club
Directors' Meeting	10:00
Coffee Hour	10:00
Business Meeting	11:00
Lunch	12:00
Golf	1:15

Next month will be the Superintendent-Greens Committee Chairman Tournament to be held at the Nashua Country Club in Nashua, N. H. on Wednesday, May 6. Host Superintendent will be Charlie Pullen. If your chairman cannot attend, come along anyway and play. I know playing Nashua Country Club will be an enjoyable day.

MEMBERS TO BE VOTED ON

Two memberships are to be voted on next month. They are: William P. Tice, Waterville Valley Golf & Tennis Club, Waterville Valley, N. H.

Joseph Colwell, Cliff Country Club, Supt. — Associate, Ogunquit, Me.

THAT DRAINAGE

By Len Chace

"That drainage ditch on No. 6 is sure in a bad spot. It catches my drive every time."

"I know if you hook the ball too much it will hit straight down the middle or fade it to the right side of the fairway. The hole was designed that way. It plays better to the green from the right side. The ditch forces you to play it that way."

The above is a conversation between a Greens Chairman and a golf playing superintendent, one who plays his own course and knows how it should be played for best results. Only by knowing golf and playing your own course can a superintendent know if the criticism, or even the suggestion for improvement are in effect valid. One does not realize the advantages for a well-raked trap until he has played out of a deep foot print himself and taken a double bogie. One poorly cut cup in 18 holes does not seem important until you lose a match by one missed putt that would have gone in if the cup were straight and level. I believe all superintendents should play golf and, I will go so far as to recommend that all the help on your course should attempt to play a round of golf once a month at least.

We all complain about the golfer not understanding our problems, but do we understand his? Granted our problems are our livelihood and his are but recreation, but his desire for recreation is what has created our job. Let's not fight it, but join it. Learn at first hand why a golfer acts that way — become one.

Concord's New Golf Course Maintenance Building

BY JOHN W. KEACH, DIR. AND ROLAND LACHANCE, MAINT. SUPT. RECREATION & PARKS DEPT., CONCORD, NEW HAMPSHIRE

Budget problems confronted the Concord, N.H. Recreation and Parks Department when it planned new golf facilities. With limited funds available at the time, we feel we obtained the maximum square footage for the least cost in our new building. Pre-planning and assistance from other departments of the city made this possible.

Our total golf package amounted to a \$275,000 capital expenditure for our municipal course. Nine additional holes were built and the clubhouse was relocated and constructed as part of the plan. The maintenance center had to be moved and with additional equipment, larger quarters were necessary. With a tight budget, we agreed to build the facility with our own forces.

Prices from private contractors ranged from \$10,600.00 to \$15,500.00 for a 40x80 ft. building. We completed the 3,200 square foot building at a total cost of

\$4,900.00 for materials. The City Engineer and Building Inspector assisted us in the design and materials required. Dept. of Public Works personnel dug the foundation and a local concrete form company supplied the forms and poured the foundation.

All building materials were placed on bids and included: studs, sills, overhead doors and pre-constructed roof trusses. The siding used was texture 111 4x10 ft. sheets placed on 10 ft. studs, therefore requiring no unnecessary cutting.

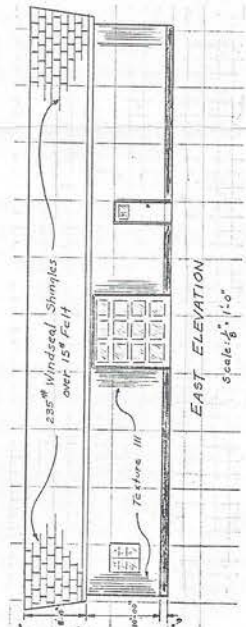
On arrival the roof trusses were placed in position, covered with plywood and shingled. Overhead doors were installed along with the old windows from the abandoned clubhouse. A concrete floor was also poured. A 20 ft. heated work area has since been created which completes the building. The outside was stained to match the natural surroundings. ●

BEAVER MEADOW

Maintenance Building	
1. Plates	—
2. Sill	—
3. Studs	—

LIST OF MATERIALS

480 L.F.—2"x4"
240 L.F.—2"x6"
10' height x 2"x4"—
16" o.c.
Total = 225 @
10'-00
5/8"—4'x10' sheets—
Total = 70 sheets.
2 coats of stain texture 1-11
Total = 10 Gals.
(a)—Roof Trusses—
2"x6"—24" o.c.
—42' span
Total Trusses = 41
(b)—Plywood 5/8"—
4'x8' Sheet C-D Exterior
Total Sheets = 110
(c)—Felt 15 lb.—
Total = 3600 S.F.
(d)—Shingles—235
lb. Windseal
Shingles
3600 S.F.—Total
= 36 squares
10'x10' overhead
doors—Model 65
2 sections glazed
Price installed
Price not installed
Total = 2 doors



— Reprint from Park Maintenance, Jan. 1970

SOUND OFF!

(It's time to sift through the mails for another go-round of Sound Off. The NEGCSA likes to hear all sides of an issue. Therefore, it invites comments, criticism or what have you on any subject relating to the world of the superintendent. Send them to Newsletter Mail Box, 24 Riverview Drive, Newbury, Mass. 01950. Naturally, we reserve the right to follow up with our comment.)

"We in Virginia are very interested in a recent project of your Massachusetts Golf Association, that of pushing for a plan to treat golf courses as open spaces or green belts in regard to assessment for real estate taxes. We agree with the move 100 percent. Golf courses should fall into a special category and not be handled as part of the housing market. The taxpayer is hurting because of this injustice."

TAD OLIVER

Swampy Meadows CC, Churchill, Virginia

We're hoping for the best here, Tad. But our state didn't get the nickname of "Taxachusetts" giving taxpayers a break.

* * * *

"Here it is time again for my club to play prejudice with me, the superintendent who always seems to wind up on the basement level of the annual table of organizational board listing. It's the same old story. Everyone is there, including the mah-jong committee. Me? If I'm lucky, I will round out the also-rans. Don't you think this is unfair? What should I do about it?"

HANK JOHNSON

Vernon, Conn.

You're in a familiar pickle. The best thing to do is read the list upside-down.

* * * *

"I would like to take this opportunity to congratulate your Newsletter in allowing us, the readers, to express our views. It is not often that a publication puts its editors in the back-ground, sort of speak, and gives the floor to the 'loyal opposition.' I really don't have any gripes with you people but find it most interesting that people from all over the country respond to your invitation to release their feelings on matters pertaining to golf. Keep up the good work. Although I don't always agree with the comments, or the letters for that matter, I think the project is worthwhile."

D. L. TURNER

Downstream, Va.

What can we say, D. L.? Just get yourself a gripe and we'll be of service.

* * * *

Thank you for including me in the list of Friends of the Association. I am most happy to continue as a subscriber to the Newsletter.

The Association did a fine job in putting on the annual turf conference. It gets better every year.

PHILIP A. WOGAN

Golf Course Architect

Manchester by the Sea, Mass.

Thanks for your kind words, Phil. It's always nice to hear from "Our Friends of the Association."

Position Open — 18 holes, The Glenmere, Chester, New York,



"Just a few words to all my friends in the New England section reminding you that arrangements are being made to present a gala reception for those making the fall trip to St. Andrews. We are most happy to see you picking up the long overdue attempt to bring the golfing factions of our countries closer together.

"I have fond memories of my visit to your beautiful New England and hope we in St. Andrews can afford the same type of appreciable setting and social climate to make your stay a memorable one. The reception, incidentally will be full regalia with a Pipe Band ready to initiate the greeting. See you in November."

JOHN CAMPBELL

Old St. Andrews, St. Andrews, Scotland

Throw in a Highland Fling, John, and maybe we'll even get Ben Chlevin to come along.

* * * *

"I am amazed, if the listing is correct, that only FOUR of the so-called commercial firms of the THIRTY-EIGHT paying an annual fee of \$50 to be listed in the Newsletter, have donated to the Lawrence S. Dickinson Scholarship Fund.

"It may be true that some came into this area after the death of our beloved Prof, but there is no doubt that much of the good business climate which helps their business, came from the basic work Prof did in the development of golf turf.

"We consider it a privilege to be permitted to contribute rather than an obligation and I am sure the other three feel the same. I should like to use this space to suggest to the other 34 they join in supporting the LCD Fund. One single contribution of \$250 would increase the fund \$8500."

ORVILLE O. CLAPPER

The Clapper Company, West Newton, Mass.

What can we say? You've said it all.

* * * *

"By the time this is printed it will be well past the opening of golf season. But, as a member of a fairly influential club, I deem it necessary to comment on the fact our superintendent is much too much cautious in allowing people to play in early spring.

"While other surrounding courses, I believe most are public, are open to the masses we have to sit and wait until he's good and ready to declare the course playable. It seems to me you superintendents would make it a must to double and triple your forces around the first of April in order to shoot for an early opening. I am very upset with my man here and intend to tell him about it.

ROYCE JACKSON

Tawny, Pa.

Better that you be upset with your super in April than be cursing him out in July.

* * * *

(That brings us to the end of the line for this month's take-off on the superintendent and his ever-changing world. There'll be more the next time we get together. So, be part of the show. Take time out and tell us like it is.)

Golf Chairman —
JULIUS AKSTEN
6 Main Street
Southboro, Mass. 01772
Phone 485-8885
Club Affiliation
St. Mark's Golf Club

Educational Chairman —
ALBERT AUGER
6 A. Fort Hill Street
Hingham, Mass. 02113
Phone 749-2272
Club Affiliation
South Shore Country Club

Newsletter Chairman —
DEAN ROBERTSON
24 Riverview Drive
Newbury, Mass. 01950
Club Affiliation
Chestnut Hill Country Club

Past President —
ANTHONY CARANCI, JR.
22 Hillview Drive
No. Providence, R. I. 02900
Phone 723-1688
Club Affiliation
Ledgemont Country Club

Information contained in this publication may be used freely, in whole or in part, without special permission as long as the true context is maintained. We would appreciate a credit line.

Please patronize **FRIENDS OF THE ASSOCIATION**

Agrico Chemical Company
R. D. Sibley, Jr., Representative
375 Power Rd.
Pawtucket, Rhode Island 02860

Agway Commercial Sales
Richard Williams
66 James St., W. Newton, Mass.
Phone 244-5309

Alfco Rokeby Co., Inc.
Fertilizers and Chemical Specialties
P. O. Box 267, Marietta, Ohio

Astroturf Recreational Surfaces
Monsanto Co., R. Spencer Thompson
P. O. Box 2130, Springfield, Mass.

Baker Tractor Corp., Ford Tractors
Harley Davidson Golf Cars
Swansea, Mass.

Philip C. Beal, Consulting Engineers
Irrigation and Recreation Facilities
P. O. Box 102, Hanover, Mass. 02339

The Charles C. Hart Seed Co.
Wethersfield, Conn.

Corenco Corporation
Tewksbury, Mass. 01876
J. E. Nordholm Turf Specialist

*The Clapper Co.
1121 Washington St.
West Newton, Mass.

*Geoffrey S. Cornish
Golf Course Architect
Fiddler's Green, Amherst, Mass.

George E. Cull
Terra-Green Soil Conditioner
112 Green St., Abington, Mass.

Arthur Curran
Rock Driller Supply Equipment, Inc.
20 E. Glenwood Ave.
Hyde Park, Mass. 02136

C. S. Curran
T. R. C. Products, Oils and Greases
7 Linden St., Framingham, Mass.

Fairway Equipment, Inc.
Sales — Service — Rentals
35 Walnut St., Reading, Mass.

Farm Bureau Association
158 Lexington St., Waltham, Mass. 02154
Fred Heyliger, Representative

Fisk, Alden Ford, Tractor Sales, Inc.
Rear 900 Providence Highway
Dedham, Mass. 02026

Manuel Francis and Son, Inc.
Turf Nurseries
624 Webster St., Marshfield, Mass.

Ron Gagne — Scotts Golf Course Div.
45 Mechanic St., Apt. 1A
Foxboro, Mass. 02035

Gold Star Sod Farms, Inc.
181 South Ave., Weston, Mass. 02197

Grounds Equipment Co., Inc.
383 Boylston St., Newton Cen., Mass.

*Tom Irwin Co
Bennett Hill Rd
Rowley, Mass.

Johns-Manville Corp.
150 Causeway, Rowley, Mass.

Karandrew Turf Farms, Inc.
Sam Mitchell, Sales Representative
18 Old Randolph St., Canton, Mass.

The Kenneth Barrie Company
Irrigation
375 Centre St., Jamaica Plain, Mass.

Kerr-McGee Chemical Corp.
380 Union St.
West Springfield, Mass. 01089

Larchmont Irrigation Co.
Larchmont Ln., Lexington, Mass.

Bob Lippman, Tuco Products Co.
Division of the Upjohn Company
Kalamazoo, Michigan

Magovern Company, Inc.
Lawn Acre Road
Windsor Lock, Conn.

D. L. Maher Co.
Water Supply Contractors
P. O. Box 274, Woburn, Mass.

Old Fox Chemical Inc.
Fertilizers — Seeds — Turf Chemicals
66 Valley Street
East Providence, Rhode Island 02914

Sil Paulini, Inc.
6 Manor Avenue
Natick, Mass. 01760

Richey & Clapper, Inc.
28 Rutledge Road
Natick, Mass. 01760

*Sawtelle Brothers
Jct. Routes 128 and 62
Danvers, Mass.

Shepard Sod Company
Merion Blue Grass and Pencross Bent
200 Sullivan Ave., So. Windsor, Conn.

Stur-Dee Rake Co.
P. O. Box 1087, Woonsocket, R. I. 02895

USS Agri-Chemicals, Inc., A. P. Bonnell
Seaboard Distributing Co., Inc.
Yarmouth Port, Mass. 02675

Philip A. Wogan
Golf Course Architect
21 Budleigh Ave., Beverly, Mass.

Wyandotte Chemical Co.
709 Salada Bldg., Boston, Mass.

Yerxa's, Inc.
Golf Course Equipment
740 Broadway, S. Portland, Me.

* Contributors to the Lawrence S. Dickinson Scholarship Fund

NEWSLETTER

Golf Course Superintendents Association
OF NEW ENGLAND, INC.



DEAN ROBERTSON
Newsletter Committee Chairman
24 Riverview Drive
Newbury, Massachusetts 01950
Phone 462-4540
Club Affiliation
Chestnut Hill Country Club
LEON Y. ST. PIERRE
Business Manager
GERRY FINN
Contributing Editor

FIRST CLASS

