



# THE NEWSLETTER

July 2003

of the *Golf Course Superintendents Association of New England, Inc.*

Sponsors and administrators of the Troll-Dickinson Scholarship Fund – Awarded yearly to deserving Turf Management Students.

## Family needs come first for Ken Crimmings as he turns over his Newsletter editorship

There's been a change of command on the firing line and in the trenches where the GCSANE Newsletter is assembled and published. Added responsibilities at home have caused Newsletter editor Ken Crimmings to step down from that post and his seat on the association's board of directors. Crimmings was deep into his second year as the Newsletter's administrative whip when he made the move.

*"I like to think of this as a protracted sabbatical . . . I'd like everyone to know I'm still part of GCSANE and it's a part of me."*

*Ken Crimmings  
Marlborough C.C.*

He has been replaced by Mike Stachowicz, who is looking forward to following in Ken's footsteps in producing a professional and informative newsletter for the GCSANE. Mike is the head superintendent at Southwick-based The Ranch, a rising giant in the community of the country's prestigious public golf courses.

Although, the title may appear to be one of just sitting back and making decisions, GCSANE Newsletter editor is an all-encompassing position in the planning and development of each monthly edition. This put the onus on Crimmings, whose lifestyle changed drastically when Kim's dreams of becoming a successful businesswoman became a reality.

"There really wasn't any decision on my part," Ken said. "My wife's been involved in nursing in many different fields. She thought the relatively new procedure of laser hair removal was ready to take off and I agreed. After that, it was a matter of me making the time to help out more with the kids and the only way to do it was resigning from the Newsletter and board. I couldn't do those jobs justice by trying to squeeze in an hour here and an hour there. There was only one thing to do, the right thing, and I did it."

Those precious hours away from duties at Marlborough are now filled with making decisions like, "who gets first bath tonight?", "what'll we have for dinner?", "is this Little League night?", and so on. "I have to help out," Ken added. "We're all family here. We're all pitching in and I think it's working. Uh, I know it's working."

When Crimmings took the Newsletter reins from Russ Heller two years ago, the situation presented a perfect fit for his job as head superintendent at the tradition-rich Marlborough Country Club, his family, and the association. He brought a special brand of enthusiasm, energy, and perspective to the position and looked forward to a long stay as its occupant.

However, in recent weeks Ken had to reexamine his priorities. His wife, Kim, decided to start a laser-control hair removal practice, which meant Ken would have to take a major role in bringing up the couple's three children. All at once, time became one of the most important elements in the Crimmings' household. Ken had to take over some of Kim's responsibilities at home so she could devote more time to the crucial start-up stage of her business.

Crimmings, now in his seventh season as Marlborough superintendent, is regarded as a fixture there even though it might seem he's just settling in. His entry into golf course maintenance deserves mention since its introduction came from

*continued on page 2*

### INSIDE . . .

	Page
Calendar of Events . . . . .	2
Remember When? . . . . .	3
UMass News: Winter School . . . .	4
GCSAA News: PDI Update . . . .	4
GCSAA News: IPM Exam . . . . .	5
GCSANE Photo Gallery . . . . .	5
Divot Drift . . . . .	6



**PRESIDENT**  
James R. Fitzroy, CGCS  
357 W. Squantum Street, North Quincy, MA 02171  
617-328-1776 Fax 617-328-9479  
E-Mail: Jfritz39@rcn.com  
Presidents Golf Course

**VICE PRESIDENT**  
Michael J. Hermanson  
140 Ryan Street, Gardner, MA 01440  
978-632-2713 Fax 978-632-2713  
E-Mail: Hermo68@hotmail.com  
Gardner Municipal Golf Course

**SECRETARY**  
Ronald P. Dobosz, Jr.  
1137 Park Street, Stoughton, MA 02072  
781-341-8564 Fax 781-341-8564, \*51  
E-Mail: Rdobosz111@aol.com  
Cedar Hill Golf Course

**TREASURER**  
Michael V. Iacono, CGCS  
50 Newton Street, Weston, MA 02493  
781-899-7913 Fax 781-983-0602  
E-Mail: thebrook18@aol.com  
Pine Brook Country Club

**TRUSTEE**  
Patrick S. Kriksceonaitis  
4 Lakemans Lane, Ipswich, MA 01938  
978-526-4600 Fax 978-526-8333  
Essex County Club

**TRUSTEE**  
Jason S. Adams  
11 Woodcrest Lane  
Blackstone, MA 01504  
781-326-3801 Fax 781-326-3801  
E-Mail: Jayadams35@hotmail.com  
Norfolk Golf Club

**TRUSTEE**  
Russell E. Heller  
41 Clifford Street, Melrose, MA 02126  
617-983-2786 Fax 617-983-2786  
E-Mail: Rheller@gcsane.org  
Franklin Park Golf Course

**FINANCE CHAIRMAN**  
Arthur Silva, CGCS  
35 Pennacook Road, Tewksbury, MA 01876  
781-484-5440 Fax 781-484-6613  
E-Mail: Silvaccgcs@aol.com  
Belmont Country Club

**GOLF CHAIRMAN**  
David A. Comee  
65 Marquette Street, Gardner, MA 01440  
978-297-1223 Fax 978-297-0911  
E-Mail: Dcomee@hotmail.com  
The Winchendon Club

**EDUCATION CHAIRMAN**  
Patrick J. Daly, CGCS  
P. O. Box 2284, Framingham, MA 01703  
508-872-9790 Fax 508-872-5393  
E-Mail: Pat@framinghamcc.com  
Framingham Country Club

**NEWSLETTER CHAIRMAN**  
Michael W. Stachowicz  
100 Ranch Club Road, Southwick, MA 01077  
413-569-9333, ext. 211 Fax 413-569-9330  
E-Mail: par5n2@yahoo.com  
The Ranch Golf Club

**PAST PRESIDENT**  
Robert Ruzsala  
69 Gellinas Drive, Chicopee, MA 01020  
413-256-8654 Fax 413-256-8654  
E-Mail: Hrcc40@aol.com  
Hickory Ridge Country Club

**EXECUTIVE SECRETARY**  
Sharon K. Brownell  
P. O. Box 566, Mattapoisett, MA 02739  
508-758-6474 Fax 508-758-6474  
E-Mail: Sbrownell@verizon.net



**GCSANE Headquarters**  
300 Arnold Palmer Blvd., Norton, MA 02766  
Tel.: (800) 833-4451 Fax: (508) 758-6474  
Web Site: www.gcsane.org

Newsletter Editor . . . . . **Michael Stachowicz**  
Contributing Editor . . . . . **Gerry Finn**  
Business Manager . . . . . **Julie Heston**  
(E-Mail: jheston@verizon.net)

Any opinions expressed in this publication are those of the author and/or person quoted, and may not represent the position of GCSANE. Information contained in this publication may be used freely, in whole or in part, without special permission as long as the true context is maintained. We would appreciate a credit line.

*"I couldn't do those jobs justice by trying to squeeze in an hour here and an hour there.*

**Ken Crimmings  
Marlborough C.C.**

*continued from page 1*

a desire to play, not pamper the grounds where the game is played.

Ken was a pretty good golfer in his hometown of Northboro where the Crimmings' family still resides. Again, it was another case of circumstances dictating his lifestyle. At the time (late 1980's) Ken was working nights as a bartender and playing golf in the daytime at Juniper Hills where Tom Ackley was course superintendent.

"I asked Tom if he could use me on the crew once in a while," Crimmings explained. "I knew if I worked there, I would play golf free. Eventually, I got to like the work at Juniper Hills and I found myself spending more time working on the course and less behind the bar. That's when I moved on."

Don Blakely, Ken's uncle and head superintendent at the nine-hole Harwichport course, made Ken's vocational change official by bringing him on as his assistant. "He just said he'd teach me everything he knew about maintenance," Crimmings told. "I learned a lot from him and I also took the UMass winter course while I was there. Then Glenn Ackley called me from Marlborough and said he needed an assistant. I accepted and had three great years under Glenn. When he retired after my third season, he recommended me as his replacement. And here I am."

Marlborough, one of the early sites for Senior PGA Tour play, continues its tradition of offering a challenging yet fair layout for members and an occasional visit by USGA participants in regional events. If it hosts what might be called a signature tournament, it's the Metro West Open, played in July. It attracts familiar sports names such as tennis great Ivan

Lendl who is scheduled to play in this year's tourney.

As recently as a year ago Marlborough also was the site for a U.S. Senior Open qualifier. One of its contestants was nationally recognized golf telecaster and renowned golf teacher Peter Kostis.

A modest Crimmings describes his course as being in "pretty decent shape." He adds, "I don't have that much experience in the business but I try to use as many educational aids as I can in my work. We've made a million little improvements here. I just see what works and do it. Also, I have a theory about work time at the course. I don't work my crew to death. We're not a four-in-the-morning to six-in-the-evening outfit. As long as we get results, why change that?"

Ken knows he'll miss his editor job as well as being a member of the board. "I like to think of this as a protracted sabbatical," he concluded. "One day down the road, if everything works out, I'd like to come back and make a contribution for the good of the association. I'd like everyone to know I'm still part of GCSANE and it's a part of me."

**GERRY FINN**

## CALENDAR . . .

- |           |  |
|-----------|--|
| July 28   | <b>GCSANE Monthly Meeting<br/>Supt./Club Official Tournament</b><br>LeBaron Hills Country Club<br>Lakeville, Mass.<br>Supt. - Mark Klimm |
| August 26 | <b>GCSANE Monthly Meeting<br/>Individual Championship</b><br>Marlborough Country Club<br>Marlborough, Mass.<br>Supt. - Kenneth Crimmings |
| Sept. 22  | <b>GCSANE Monthly Meeting</b><br>Townsend Ridge Country Club<br>Townsend, Mass.<br>Supt. - David Copeland                                |
| October 6 | <b>GCSANE Monthly Meeting</b><br>Juniper Hills Golf Course<br>Northborough, Mass.<br>Supt. - Thomas Ackley, CGCS                         |
| November  | <b>GCSANE Monthly Meeting<br/>Annual 9-Hole Meeting</b><br>Norfolk Golf Club<br>Norfolk, Mass.<br>Supt. - Jason Adams                    |

# Remember When?: A view of GCSANE's history through the pages of our past newsletters

*Remember When?* is a look back at the people and events of GCSANE's past.

## 25 Years Ago

Thanks go to the Wellesley Country Club for being host to our monthly meeting. We are especially grateful to course superintendent Tom Schofield and golf pro Les Bond who made our stay there very enjoyable.

Dr. Joe Troll of the UMass turf school staff attended along with his new assistant Kirk Hurto. Mr. Hurto started working with Dr. Troll in January at the Stockbridge grounds. Hurto is a native of Illinois and says he and his wife love New England. The association welcomes Mr. Hurto and hopes to see more of him in the future. Dr. Troll also announced that the UMass Field Day will be held July 26. Viewing of turf plots will be conducted from 9 a.m. through noon. Lunch and discussion follow.

GCSANE members also should be aware of a new member, Paul Miller, who holds down the responsibility of superintendent at the Tedesco Country Club. Paul is in his second year at Tedesco after serving under Charlie Gardner at Oyster Harbors for six years.

The association is sorry to hear that Elmer Fuller passed away. Elmer was a retired member who was active in GCSANE matters for 52 years.

The golf competition at Wellesley was blind draw net. The foursome of Ron

Kirkman, Bert Frederick, Ed Wiacek, and Wayne Zoppo carved out a 57 to take top honors. Second at 58 were Larry Bunn, Don Hearn, Julie Aksten and Allen Cumps. Settled in third place at 59 was the combination of Pete Coste, Dave Loker, Dick Zepp and Bob McIntyre.

## REMEMBER WHEN?

One of the highlights of a Kernwood Country Club gathering was the marking of the retirement of course superintendent Lester Allen. The 69-year old veteran super, who brought Kernwood to glorious maintenance heights for the past 33 years, has credentials galore. He is a former president of the Golf Course Superinten-

dents Association of America and held that same post for the New England Turf Council.

Lester moved the large crowd marking his retirement when he commented: "I've loved my years at Kernwood. I'd hate to be in a factory doing the same thing. The course is like another child. You say you'll retire and forget about it but it's tough. It's like a little baby . . . when you're away from it, you worry about it constantly."

## 15 Years Ago

The May meeting was held at Ocean Edge and Jeff Carlson had the course in fine shape. There were some testy pin placements but it didn't faze Mal Wendell

*continued on page 6*

*GCSANE members also should be aware of a new member, Paul Miller, who holds down the responsibility of superintendent at Tedesco Country Club.*

*25 Years Ago*

## Gary Luccini Memorial 4-Ball Championship - Round 1 & 2 / Quarter-Finals / Semi-Finals / Championship Match -



# UMass Winter School's 7-week program now accepting applications for 2004 session

The University of Massachusetts Winter School for Turf Managers is now accepting applications for the 2004 session. This seven-week course provides students with the concepts essential to professional maintenance of high quality turf. Winter School 2004 classes will run from January 5 through February 20, 2004. The deadline for application is September 15, 2003.

*UMass Winter School for Turf Managers is intended especially for professionals who want to expand their skills and advance in their career, but cannot schedule a two or four year program.*

UMass Winter School for Turf Managers is intended especially for professionals who want to expand their skills and advance in their career, but cannot

## UMASS NEWS

schedule a two or four year program. Winter School is most appropriate for men and women associated with the management of golf courses, athletic fields, parks, industrial grounds, municipal and private grounds, fine lawns, and other fine quality turf situations. Winter School classes are taught by University of Massachusetts faculty and staff as well as renowned turf industry professionals.

Space is limited. A high school diploma is required.

Twenty-three (23) CEUs (Continuing Education Units) are available upon successful completion of the course. These CEUs may be applied toward the Golf Course Superintendents Association of America renewal of certification, or towards the Sports Turf Managers Association's Certified Sports Field Manager (CSFM) program according to that program's standards. This course has

*In addition, Winter School for Turf Managers has been approved for pesticide applicator contact hours in the New England states.*

also been approved for 1.75 Education Points in the CSFM program.

In addition, Winter School for Turf Managers has been approved for pesticide applicator contact hours in the New England states. Most other states accept this approval towards their own applicator licensing and certification programs.

For additional information, and a printable brochure/application, visit: [http://www.umassturf.org/education/certificate\\_programs/winter\\_school.html](http://www.umassturf.org/education/certificate_programs/winter_school.html).

# Professional Development Initiative (PDI) update: Class A membership changes implemented this month

As of July 1, members may record their education and service points for Class A renewal online, via fax, or by calling the service center at (800) 472-7878 and asking for a form to be mailed to them.

By recording this information, GCSAA will have access to aggregate data to use in marketing superintendents, including the number of members who take advantage of continuing education opportunities, as well as those who are active in their communities. When drawing from this information, PDI will provide GCSAA with a powerful, documented message to take to employer groups throughout the country.

For more information about PDI and the forms necessary to retain your Class A status, logon to "Member Central" at GCSAA Online.

## GCSAA NEWS

All Class A, non-certified members should have received a letter in May issuing an initial renewal cycle. If you did not receive a letter, or if you still have questions, contact Duane Patton, member standards manager, at (800) 472-7878, ext. 690.

*As of July 1, members may record their education and service points for Class A renewal online, via fax, or by calling the service center.*

# GCSAA launches Integrated Pest Management exam

The GCSAA Integrated Pest Management Exam is now available for individuals who wish to take the exam rather than submit proof of a state pesticide license. The requirement to submit the proof of the license or take the exam was established in 2001 as part of the standards to maintain Class A status defined by the Professional Development Initiative.

The proctored exam consists of 100 questions that you must complete in

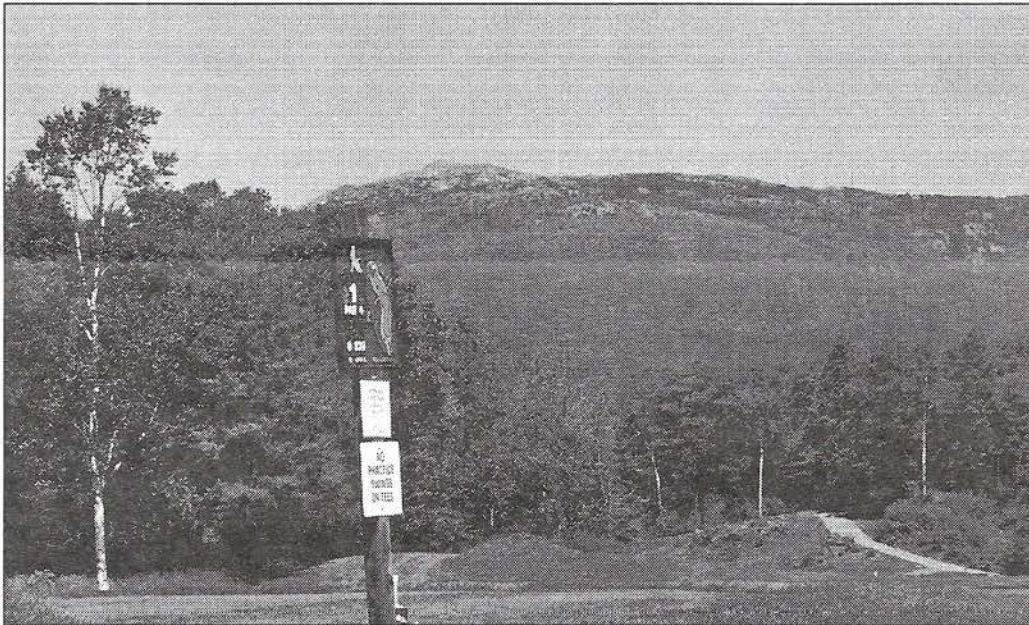
three hours. The exam is open book and GCSAA has developed a study guide that you can use on the exam; however, the

## GCSAA NEWS

use of other reference materials also is permitted. There is a \$40 application fee to take the exam that includes the cost of the study guide. For more information, visit the GCSAA Learning Center.

*The proctored exam consists of 100 questions that you must complete in three hours.*

## Mountain scenery at GCSANE's June Meeting

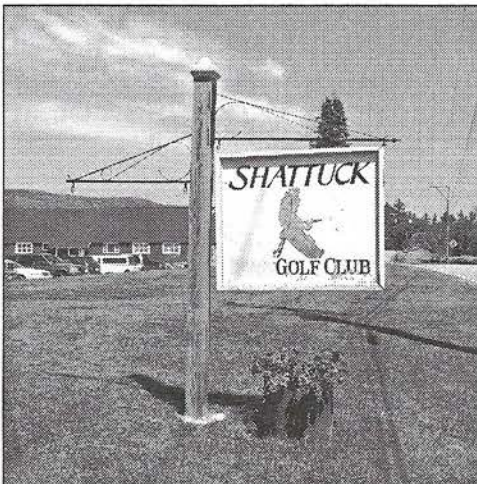


**June 23, 2003**  
**The Shattuck G.C.**  
**Jaffrey, N.H.**

The June GCSANE meeting was held at The Shattuck Golf Club in Jaffrey, N.H., at the foot of Mt. Monadnock. The host superintendent was **Paul Lautner**.

At left is the first tee, with Mt. Monadnock in the background. Below, **Jason Adams** chips for birdie, trying to stop the ball before the water. This was a homecoming of sorts for Jason, who was assistant superintendent three years ago. **Andy Langlois** looks on in the background.

(See the golf results in Divot Drift on page 6.)



## Remember When?

continued from page 3

and Ron Ryan. Both carded 77 gross and were awarded 1st and 2nd place.

The Stimpmeter's importance and influence on the game of golf will be recognized this month when the U.S. Open is staged at The Country Club in Brookline. Edward Simpson, a TCC member for 33 years and inventor of the instrument that clocks speed of greens, will be honored during appropriate ceremonies during the event.

Simpson designed the Stimpmeter to promote consistent standards in the speed of greens compatible with slope. The occasion of several New England golf courses with pitched greens to set unfair pin placement inspired Simpson to address the green speed issue and come up with a method to level the playing field in terms of pace on golf course greens. His application of speed variations has helped make the game more enjoyable.

### 5 Years Ago

One of the icons of New England golf punched in as a retirement rep when Dick Haskell completed 30 years of

service as executive director of the Massachusetts Golf Association (MGA).

But, alas, Haskell couldn't go quietly. He still makes it to the MGA office (7:30 a.m. starting time) to work on a couple of projects: the association's magazine and a history of the MGA scheduled for delivery at its 100th birthday in 2003.

Haskell and the golf course superintendents form a solid, productive relationship. It was during Haskell's reign that the GCSANE president became an automatic member of the MGA executive committee.

continued on page 8

## DIVOT DRIFT...announcements...educational seminars...job opportunities ...tournament results...and miscellaneous items of interest to the membership.

### INFORMATION

**New Publication Available: Professional Guide for IPM in Turf for Massachusetts, 2003-2004.** The new Professional Guide for IPM in Turf for Massachusetts, 2003-2004 is now available. Initially developed in 1991, this revision marks the 7th edition of this popular publication. The Professional Guide for IPM in Turf for Massachusetts is for green industry professionals to use as a tool in the management of all types of turf: from roadside and utility areas, to conservation plantings, to lawns, to athletic fields, to the fine playing surfaces on golf courses. Municipal and school officials charged with establishing IPM programs in their communities, and gardeners and homeowners serious about sensibly caring for their properties will find unique and critical information here as well.

The facts presented in the Professional Guide for IPM in Turf for Massachusetts are based on the principles of integrated pest management (IPM), with environmental stewardship as the highest priority. The guide can be used effectively in a wide range of management schemes: from organic, to low-maintenance, to high-intensity care of high-use turf. While the pesticide regulations section of the guide is specific to Massachusetts, the rest of the guide can be used effectively throughout New England.

Here are just some of the updated, distinctive pieces of information you will find in the Professional Guide: turfgrass cultivars recommended for Massachusetts; disease tolerance of selected turfgrass cultivars; cultural management of turfgrass diseases; turf pest damage monitoring chart; refined pest threshold levels; biological management of turf damaging insects; efficiency, residual, and environmental hazards of turf insecticides; monitoring and management of turf weeds;

alternatives to pesticides regulated under the Public Drinking Water Supply Protection Regulations.

For ordering information, please visit: [http://www.umassurf.org/whats\\_new.html](http://www.umassurf.org/whats_new.html)

### GCSANE BUSINESS

**GCSANE has blocked a number of rooms** for its members at the Association Headquarters in San Diego for the 2004 GCSAA Conference and Show. If you wish to claim one of these rooms, please contact Michael Hermanson. It will need to be secured by credit card by November 14.

**GCSANE has become a tee sponsor** for the 4th Annual Stockbridge Alumni Golf Classic at the Andover Country Club in Andover, Mass. on Monday, September 8, 2003. If you wish to participate you may sign up online at [www.stockbridgealumni.org](http://www.stockbridgealumni.org), or contact Joe Dupont '61, 277 County Way, Beverly, MA 01915; Phone: 978-922-0038

**Pat Daly, Education Chairman**, has announced two GCSAA seminars: November 18 - *Developing a Comprehensive Turfgrass Management Program*; November 19 - *Budgeting Essentials Workshop*. Details will follow.

**The IPM Council of Massachusetts**, on which GCSANE serves, just did an IPM training program at Loews in Woburn. It was two hours long and touched on all aspects of IPM.

**Should you have a problem registering** due to phone issues at the GCSANE headquarters, the alternate number is 508-758-6474 (phone & fax). If you would rather register by e-mail the address is [Sbrownell@gcsane.org](mailto:Sbrownell@gcsane.org) or [Sbrownell@verizon.net](mailto:Sbrownell@verizon.net).

**GCSANE is sponsoring a tee** for a scholarship in memory of Matthew Horridge. He was a senior at URI. This scholarship will go to someone majoring in turf management.

**GCSANE is now offering website-only job postings.** Cost for these postings is \$100. For more information, contact Sharon Brownell at (800) 833-4451.

### PERSONAL NOTE

**Wishes for a quick recovery** go out to Nehoiden Superintendent Eric Sinasalo, who just received triple bypass surgery.

### WEBSITE OF THE MONTH

**www.greenmediaonline.com** has a huge archive of magazines relating to our industry. These magazines include Arbor Age, California Fairways, Golfscapes, Landscape and Irrigation, OPE, and Sports Turf.

### TOURNAMENT RESULTS

#### Team-of-Two Championship

The Shattuck Golf Club  
Jaffrey, New Hampshire  
June 23, 2003

Host Superintendent - Paul Lautner

Superintendent Division

1st Gross - Jim Fitzroy & Rich Tworig (68, -3)  
1st Net - Conor Fitzgerald & Russell Heller (65, -6)

Affiliate Division

1st Gross - Bob Healey & Robin Hayes (73, +2)  
1st Net - Dave Antunes & P. Amoria (70, -1)

# Please Patronize these FRIENDS of the ASSOCIATION

## A-OK Turf Equipment Inc.

1357 Main St., Coventry, RI 02816-8435  
Articulator, Terra Topper, Greens Groomer  
brush, & used equipment.  
Mike Cornicelli - (401) 826-2584

## A.A. Will Materials Corp.

168 Washington St., Stoughton, MA 02072-1748  
Top dressing & bunker sand, decorative stone,  
landscape materials, wholesale nursery stock.  
Charlie Downing, Mike Read - (800) 4A-WILL

## Accsoils

P.O. Box 1125, Carver, MA 02330  
Topdressing sand & mixes, divot mix, greens & tees,  
root zone mix, bunker sand, cart path mix, stabilizer,  
& greens care analysis.  
Joe Farina, Frank Santos - (866) 222-6644

## Allen's Seed Store Inc.

693 S. County Trail, Exeter, RI 02822  
Specializing in quality seed and related  
golf course maintenance supplies.  
Gregg Allen - (800) 527-3898

## Agresource, Inc.

100 Main St., Amesbury, MA 01913  
Tim Gould, Guy Travers  
(800) 313-3320, (978) 388-5110

## The Andersons Technologies, Inc.

26 Waite Ave., S. Hadley, MA 01075  
Manufacturer of fertilizer & control products.  
Rick Forni - (413) 534-8896

## Armstrong Golf Architects, LLC

76 S. New Boston Rd., Franconstown, NH 02043  
Golf course design & renovation. (603) 547-3132

## Bay State Fertilizer/MWRA

100 First Ave., Boston, MA 02129  
Manufacturer & supplier of dry organic fertilizers.  
Kristen Patneau - (617) 788-4437

## The Borden Company

114 Summer St., Maynard, MA 01754  
Bulk limestone dealer.  
Jack Borden - (978) 897-2571

## Boston Irrigation Supply Company

60 Sturgis Way, Dedham, MA 02026  
Distributor, irrigation supplies & accessories.  
Andy Langlois, J. Anderson III, Ron Milenski  
(800) 225-8006

## Bourke & Lannery Turf Care dba "DryJect"

48 Hardwick Terrace, Brighton, MA 02135  
Aerification & filling of holes with dry material in one  
pass on greens, tees, or problem spots on fairways.  
Rory Bourke - (617) 779-8873

## The Cardinals, Inc.

166 River Rd., P.O. Box 520, Unionville, CT 06085  
Golf course and landscape supplies.  
John Callahan, Dennis Friel - (800) 861-6256

## Cavicchio Landscape Supply, Inc.

110 Codjer Lane, Sudbury, MA 01776  
Annuals, perennials, garden mums, ground  
covers, loam, and mulch.  
Darren Young - (978) 443-7177

## Cedar Lawn Tree Service, Inc.

32 Nickerson Rd., Ashland, MA 01721  
Pruning, fertilization, removal, & professional care.  
William P. Maley - (508) 861-2622

## Ciccarelli Landscaping

Woburn, MA 01801  
Reverse rototilling, cultivating,  
(781) 938-5055

## Clean Quest

P. O. Box 1102, Southbury, CT 06488  
Distributors of the Landa Water system for treating  
wash water, Safety Storage chemical buildings,  
& Octaflex portable wash pads.  
Steven Burnett, Michael Wende - (800) 521-5585

## Cornish, Silva, & Mungeum, Inc.

207 N. Main St., Uxbridge, MA 01569  
Golf course architects.  
(508) 278-3407

## Country Club Enterprises

P. O. Box 820, Cataumet, MA 02534  
Club Car golf cars, Carryall utility vehicles.  
Dave Farina, Darin Eddy, Darren Orr  
(800) 662-2585

## Country Golf, Inc.

4852 Westchester Dr., Traverse City, MI 49684  
Golf course construction & reconstruction;  
specialists in Donald Ross courses.  
Jerry Deemer - (616) 947-5751

## DGM Systems

1 Snagwood Rd., Foster, RI 02825  
Distributor of Reelcraft products & inventor of the  
Direct Underground Maintenance Syringing System.  
Manny Mihailides - (401) 647-0550

## DHT Golf Services

20 Clark Lane, Marshfield, MA 02050  
Golf course renovation & construction in all areas:  
bunkers, tees, greens, drainage, irrigation, & cart paths.  
Dahn Tibbett, Chip Brearley - (781) 837-3503

## Michael Drake Construction, Inc.

240 Walnut St., Framingham, MA 01702  
Golf course reconstruction; professional shaper.  
Michael Drake - (508) 875-8247

## EZGO/Texton

30 Peace Pipe Terrace, Smithfield, RI 02917  
(401) 419-7409

## F.A. Bartlett Tree Expert Co.

640 Hale St., Beverly Farms, MA 01915  
Complete tree care, landscape design &  
construction, disease control, long-range planning.  
Ben Staples - (978) 927-1590

## Gold Star Nursery & Sod Farm

250 West Rd., Canterbury, NH 03224-2127  
Growers of turfgrass and ornamentals.  
Malcolm McPhail  
Lexington, MA - (781) 861-1111  
Canterbury, NH - (603) 783-4717

## Golf Cart Services, Inc.

275 Wells St., Greenfield, MA 01301  
Club Car golf, turf, transportation, & utility cars.  
James Bernier - (800) 287-0955

## GPS New England Mapping

39 Cedar St., Cohasset, MA 02025  
Precise irrigation & drainage as-builts;  
wire tracking & electrical repairs.  
Greg Albanese - (781) 789-1166

## Greeno, Inc.

2352 Main St., Concord, MA 01742  
Tree transplanting, landscape construction, & masonry.  
Kevin Mulcahy - (800) 439-7244

## Charles C. Hart Seed Co., Inc.

P. O. Box 9169, Wethersfield, CT 06109  
Roy Sibley, Dick Gurski, Robin Hayes  
(800) 326-HART

## Hartney Greymont

433 Chestnut St., Needham, MA 02492  
Tree care, landscape construction, consulting.  
Mark Tobin - (781) 444-1227

## Holliston Sand Co., Inc.

P. O. Box 1168, Tift Rd., Slatersville, RI 02876  
USGA-recommended sands, root-zone mixes, bunker &  
topdressing, agra-soil, compost, stone-dust, & pea-stone  
Bob Chalifour, CGCS (ret.) - (401) 766-5010

## International Golf Construction Co.

5 Purcell Rd., Arlington, MA 02474  
Golf course construction.  
Antonios Paganis - (781) 648-2351;  
(508) 428-3022

## International Turf Applicators

2910 Dranefield Rd., Lakeland, FL 33811  
Ray Duffy - (800) 995-8720, (860) 646-0259

## Irrigation Management & Services

21 Lakeview Ave., Natick, MA 01760  
Irrigation consultation, design, and system evaluation.  
Bob Healey, ASIC, CID - (508) 653-0625

## Ken Jones Tire, Inc.

71-73 Chandler St., Worcester, MA 01613  
Distributor of tires for lawn & garden, trucks,  
cars, industrial equipment, and golf cars.  
Gerry Jones - (508) 755-5255

## Larchmont Engineering & Irrigation

11 Larchmont Lane, Lexington, MA 02420-4483  
Marc Utera - (781) 862-2550

## Landmark Construction

P.O. Box 662, Winchester, MA 01890  
Tee/bunker shaping & remodeling, cart paths,  
Drainage, tree planting, landscape construction.  
Daniel Champion - (781) 729-3250

## Lazaro's Golf Course Supplies & Accessories

dba Hammond Paint and Chemical Co., Inc.  
738 Main St., Suite 223, Waltham, MA 02154  
Complete line of golf course accessories;  
Standard, Par Aide, Eagle One.  
Joe Lazaro - (781) 647-3361

## Lesco, Inc.

20005 Lake Rd., Rocky River, OH 44116  
Ron Tumiski, Mike Donohue - (800) 321-5325

## D.L. Maher Co.

71 Concord St., P.O. Box 127, N. Reading, MA 01864  
Water supply specialists; wells & pumping equipment.  
(781) 933-3210

## McNulty Construction Corp.

P. O. Box 3218, Framingham, MA 01705  
Asphalt paving of cart paths, walkways,  
parking areas; imprinted asphalt.  
John McNulty - (508) 879-8875

## Miller Golf Construction

1 Leicester Rd., Marblehead, MA 01945  
Golf course construction & renovation.  
Jonathon Miller - (781) 631-2030

## S.V. Moffett Co., Inc.

33 Thruway Park Dr., W. Henrietta, NY 14586  
Commercial turf & irrigation equipment.  
Bill Stinson - (888) 708-5296

## R.F. Morse & Sons, Inc.

22 Cranberry Hwy., Wareham, MA 02576  
Professional goods, services, & John Deere  
equipment for the golf course industry.  
Larry Anshewitz, Chris Cowan, Doug Dondoro,  
Mike Hannigan, Kevin McDonough, Tom Rowell,  
Ren Wilkes, John Winkowicz - (508) 295-1553

## Nardone Sand and Gravel, Inc.

37 Power Rd., Westford, MA 01886  
Topdressing sand & mixes, bunker sands, root-zone  
mixes, loam, cart path materials, drainage stone.  
Greg Frederick - (978) 692-8221

## Norfolk Power Equipment, Inc.

5 Cushing Dr., Wrentham, MA 02093  
Sales, service, rentals, leasing, Kubota tractors  
(508) 384-0011

## North Shore Hydroseeding

20 Wenham St., Danvers, MA 01923  
Hydroseeding, erosion control, & tree services.  
Brian King - (978) 762-8737

## Partac Peat Corporation

Kelsey Park, Great Meadows, NJ 07838  
Heat treated topdressing, golf hole targets,  
turf blankets, other specialty golf supplies.  
Jim Kelsey - (800) 247-2326

## Prescription Turf Services, Inc.

P. O. Box 39, Middleton, MA 01949  
Deep-line and hydro-injection services, custom  
fertilizer & pesticide applications, fairway aeration,  
topdressing operations. (978) 777-1663

## Putnam Pipe Corp.

90 Elm St., Hopkinton, MA 01748  
Underground water, sewer, & drain piping sales,  
& distribution. 24-hour service. Elliot Putnam,  
David Putnam, Eli Poty - (508) 435-3090

## R.A.D. Corp.

269 Hanover St., Hanover, MA 02339  
Golf course construction, greens, tees, bunkers,  
drainage, earth-moving, ponds, & water features.  
Robert M. Delmonico - (781) 826-2800

## Rotondo Precast

151 Old Farms Road, Avon, CT 06001  
Precast concrete buildings for chemical & equipment  
storage. Fully-equipped restroom buildings also avail-  
able. Bob Anania - (860) 673-3291

## Sawtelle Brothers, Inc.

65 Glenn St., Lawrence, MA 01843  
Larry Bunn, Jim Favreau, John Lenhart,  
Al Vadala, George Wise - (800) 999-8873

## SBI Turf Services

65 Glenn St., Lawrence, MA 01843  
Deep-line, core, & water-injection aeration,  
DOL & Verti-Seed overseeding, irrigation services.  
(800) 999-TURF

## Shawnmark Industries, Inc.

P. O. Box 8966, Warwick, RI 02999  
Matt Howland - (401) 295-1673

## Simplot Partners, Inc.

15 Londonderry Rd., Londonderry, NH 03053  
Turf & ornamental supplies.  
Chuck Bramhall, Mike Kroian, Mike Nagle,  
Jim Wierzbicki - (800) 228-6656

## Sodco Inc.

P. O. Box 2, Slocum, RI 02877  
Bluegrass/Fescue, Bluegrass/Rye,  
Bluegrass/Fescue/Rye, Bentgrass.  
Sean Moran, Pat Hogan - (800) 341-6900

## Sports Club Management

104 Wyman Rd., Braintree, MA 02184  
OSHA and EPA compliance services & training.  
Ron Smith - (781) 848-5978

## Stumps Are Us

5 Timberwood Rd., #108, Goffstown, NH 03045  
Professional stump chipping service.  
Brendan McQuade - (603) 625-4165

## Tom Irwin Inc.

11 A St., Burlington, MA 01803  
Turf management products.  
Jack Petersen, Paul Skafas, Rob Larson, Chris Petersen,  
Greg Misodoulakis, Mike Fontaine  
(800) 582-5959

## Tuckahoe Turf Farms, Inc.

P. O. Box 167, Wood River Junction, RI 02894  
Chris Beasley - (800) 556-6985

## Turfgrass Environmental Consulting

47 Falmouth Road, Longmeadow, MA 01106  
IPM plans for permit projects, wildlife enhancement  
projects, & water quality monitoring programs.  
John Bresnahan - (413) 565-5340

## TurfLinks, Inc.

16 Kane Industrial Dr., Hudson, MA 01749  
Distributor of quality fertilizer, grass seed,  
& control products for the golf course industry.  
Kevin Lyons, Scott Mackintosh, Jim Cohen  
(866) 567-9221

## Turf Enhancement Enterprises

6 Jessica J Dr., Millbury, MA 01527  
Florating products, Precision Small Engine Co.,  
Douglas Rollers, Trion Lifts.  
Tom Fox - (508) 865-9150

## TurfNet Associates, Inc.

21 Brandywine Rd., Skillman, NJ 08558  
Cutting edge communication for the golf course industry.  
Peter McCormick - (800) 314-7929

## Turf Products Corp.

157 Moody Rd., Enfield, CT 06082  
Distributors of Toro irrigation & maintenance  
equipment and other golf-related products.  
Tim Berge, Paul Hallock, Rick Moulton, Mike Turner  
(800) 243-4355

## United Horticultural Supply

18 Legate Hill Rd., Sterling, MA 01564  
Fertilizer, seed, chemicals, & IPM.  
Glenn Larabee, Bruce Chapman, Mark Miller  
(800) 224-4440

## Varney Bros. Sand & Gravel

79 Hartford Ave., Bellingham, MA 02019  
Concrete golf cart paths.  
Kenneth Mooradian - (800) 441-7373

## Winding Brook Turf Farm

Wethersfield, CT 06109  
Peter DeBrusk - (800) 243-0232

## Winfield Nursery, Inc.

1700 Mountain Rd., S. Suffield, CT 06093  
Wholesale nursery supplies, including fertilizer, grass seed,  
turf control products, & landscaping trees & shrubs.  
Joe Trusky - (860) 668-5225

## Philip Wogan & George F. Sargent, Jr.

17 Walker Rd., Topsfield, MA 01983  
Golf course architects.  
(978) 887-3672

## Zip Turf Printing Services, Inc.

50 Kent Street, Newburyport, MA 01950  
Design, printing, mailing, advertising specialties.  
Sheila Johnson - (978) 462-9358

## Remember When?

continued from page 6

The superintendents also have become fixtures at the MGA Spring Conference, an annual golfing showcase for administrative people.

"I'm proud to be part of the good working relationship we have with the supers," Dick told *The Newsletter*. "The supers are a major force of impact on the game of golf. They've really made a big difference in my 30 years on this job. I don't know what I would have done without them."

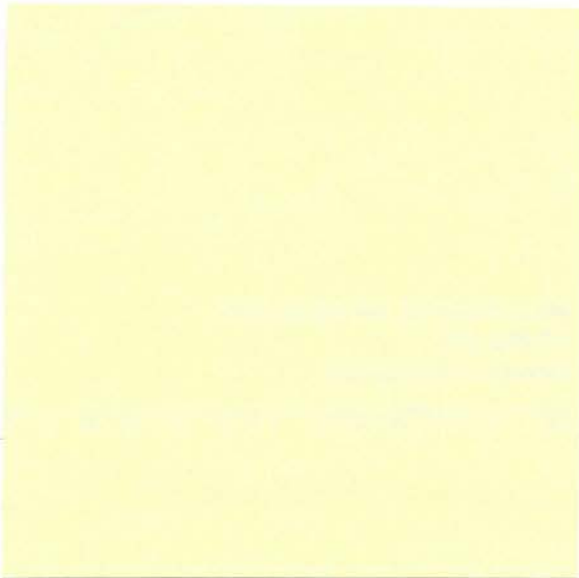
The GCSANE is approaching its 75th birthday with plans for a gala celebration of that milestone.

The association, like similar organizations, had its humble beginnings when on the night of February 25, 1924 at Cottrelle's Restaurant in Boston, 41 people got together, adopted a constitution, elected officers, and formed The Greenskeepers Club of New England.

Today, on the eve of the 75th anniversary of that historic event, the Golf Course Superintendents Association of New England boasts 630 members. An anniversary committee has been formed to set up a celebration agenda and create a legacy for future members. More on its details later.

**GERRY FINN**

**Clarification:** In the *May Remember When*, credit was given to Professor Dickinson for steering turf students and superintendents toward business classes. Although this was just a reprint from a newsletter 25 years ago, we at the *Newsletter*, in no way want to belittle the contribution of Dr. Joe Troll to the business side of golf course management. Dr. Troll lobbied to add accounting and business courses to the turf management programs at Stockbridge in the 1960s and was the original architect of the business option for four-year turf students. To this day, Dr. Troll says the best route for an aspiring superintendent to take is to get an associate's degree from Stockbridge in turf management and go on to receive a bachelor's in business.



**FIRST CLASS**

First Class Mail  
U.S. Postage  
**PAID**  
Newburyport, MA  
Permit No. 61

Return to:  
300 Arnold Palmer Boulevard  
Norton, MA 02766

