



THE NEWSLETTER

June 2014

of the **Golf Course Superintendents Association of New England, Inc.**

Sponsors and administrators of the Troll-Dickinson Scholarship Fund – Awarded yearly to deserving Turf Management Students.

GCSANE Challenger Demo Day “A win/win for all who attended”

On June 9, 2014 at Blue Hill Country Club, the GCSA of New England sponsored a field day and it was a huge success. Thank you to all that participated. In particular, to the thirty two dedicated and committed Friends and Affiliates that participated. Without their involvement we would not have been able to demonstrate our expertise. It was truly a cutting edge representation of golf course management. The day featured a very large display of the most advanced golf course equipment available today. It also included a comprehensive array of supplies supporting Best Management Practices and environmental sustainability. On display were Tier 4 Emission compliant machines, nutrient field mapping capabilities, GPS sprayers, precise calibrated sprinkler and water emitting equipment, superior turfgrass specimens and much more. A special thank you goes out to Mary Owen and Dr. Michelle Dacosta from UMass and representatives from UMass Stockbridge School for attending. As always, their presence is appreciated and invaluable.

Blue Hill Country Club and Superintendent Jason Adams, CGCS also deserve high praise. As the field day idea was introduced back in January, the concept evolved and Jason's unwavering willingness ensued. Thus, "Demo Day's" location became finalized at Blue Hill Country Club. Immediately after that, the planning, meetings and e mails began. Thanks for the many hours put forth by Mark Casey and Don Hearn and also to all that remained committed throughout the process. Eventually the day came and the event was held.

Finally, we must recognize our Superintendents. Thank you to those that came and to those working hard every day. On behalf of the GCSA of New England, I would like to say that we are fortunate to have so many fine relationships with the men and women that work in our industry. They have made this event possible, beneficial and enjoyable. It was a pleasure working with all of our constituents organizing this event.

Thank you again for a job well done. ❖

By Brian Skinner



Education Chairman Brian Skinner CGCS and Association Manager Don Hearn CGCS



DHT Golf Services reconstructing a bunker at GCSANE field day



A view of beautiful Blue Hill Country Club and some of the vendors displaying their equipment

GCSANE BOARD OF DIRECTORS

PRESIDENT

Mark Gagne
233 Baker Street, Walpole, MA 02081
508-668-3859 Fax: 508-668-9969
Email: mgagne@walpolecc.org
Walpole Country Club

VICE PRESIDENT

Scott Lagana, CGCS
840 Oak Hill Road, Fitchburg, MA 01420
978-342-6451 Fax 978-345-2044
Email: slagana@oakhillcc.org
Oak Hill Country Club

TREASURER

Michael Luccini, CGCS
10 Griffin Road, Franklin, MA 02038
508-520-3615 Fax: 508-528-1885
Email: mluccini@verizon.net
Franklin Country Club

SECRETARY

David W. Johnson
399 Parker Road
Osterville, MA 02655
508-428-6981
Djohnson.wgc@verizon.net
Wianno Club

TRUSTEE (Membership)

Jeffrey Urquhart
70 Green Lodge Street, Canton, MA 02021
781-828-2953 Fax 781-828-3220
Email: jmartin101@gmail.com
Milton-Hoosic Club

TRUSTEE (Government Relations)

Peter J. Rappoccio
246 ORNAC, Concord, MA 01742
978-371-1089 Fax: 978-369-7231
Email: gcs@concordcc.org
Concord Country Club

TRUSTEE (Scholarship & Benevolence)

David Stowe, CGCS
30 Western Avenue, Natick, MA 01760
617-789-4631 Fax 617-789-4631
Email: Newtonmaint@aol.com
Newton Commonwealth Golf Club

AFFILIATE TRUSTEE

Mark Casey
890 East Street, Tewksbury, MA 01876
617-990-2427 Fax: 978-409-0445
Email: mcasey@mte.us.com
MTE - Turf Equipment Solutions

FINANCE CHAIRMAN

Donald D'Errico
25 Tiot Street, Sharon, MA 02067
508-530-2113
Email: donny@springvalleycountryclub.com
Spring Valley Country Club

GOLF CHAIRMAN

Jason VanBuskirk
58 Randall Road, Stow, MA 01775
978-568-1100 ext. 121
Email: jvanbuskirk@stowacres.com
Stow Acres Country Club

EDUCATION CHAIRMAN

Brian F. Skinner, CGCS
320 Porter Street, PO Box 760661
Melrose, MA 02176
781-665-3147
Email: brianskinner@bellevuegolfclub.com
Bellevue Golf Club

NEWSLETTER CHAIRMAN

Earl T. (Tom) Albert
104 North Street
Douglas, MA 01516
508-990-6682
Email: black72nova@hotmail.com
Hopedale Country Club

PAST PRESIDENT

Jason S. Adams
27 Cherry Street, Wrentham, MA 02093
781-828-6540 Fax: 781-326-3801
Email: jadams@bluehillcc.com
Blue Hill Country Club

ASSOCIATION MANAGER

Donald E. Hearn, CGCS
300 Arnold Palmer Blvd., Norton, MA 02766
774-430-9040 Fax: 774-430-9101
Email: donhearn@gcsane.org

BUSINESS MANAGER, THE NEWSLETTER

Julie Heston Phone: (401) 934-7660 Email: jheston@verizon.net

GCSANE Headquarters
300 Arnold Palmer Blvd., Norton, MA 02766
Tel: (774) 430-9040 Fax: (774) 430-9101
Web Site: www.gcsane.org

Any opinions expressed in this publication are those of the author and/or person quoted, and may not represent the position of GCSANE. Information contained in this publication may be used freely, in whole or in part, without special permission as long as the true context is maintained. We would appreciate a credit line.

NERTF Elects Executive Board

May 27, 2014

The New England Regional Turfgrass Foundation recently held its 17th Annual Meeting on May 8, 2014 where a new Executive Board was elected. John Clark, GCS of Rochester Country Club in Gonic, New Hampshire has been elected as the 18th president of the foundation, succeeding Steve Mann, CGCS recently retired of the Captain's Course in Brewster, Massachusetts.

John represents the New Hampshire Golf Course Superintendent Association on the Foundation's Board and has been serving since 2009. Matthew Crowther, CGCS of the Mink Meadows Country Club on Martha's Vineyard will serve in the vice-president's seat for this upcoming year. Clifford J. Drezek of Arbor-Turf Services in Marlborough, Massachusetts representing the Massachusetts Association of Lawn Care Professionals will continue to fill the role of Treasurer. Randy S. Weeks of the Lochmere Golf and Country Club in Tilton, New Hampshire, also representing the New Hampshire Golf Course Superintendent Association, will take the pen as the foundation's secretary. The foundation consists of 2 delegates from each of the 7 GCSAA Chapters located in New England, 1 delegate from the Sports Turf Managers Association of New England (NESTMA) and 1 delegate from the Massachusetts Association of Lawn Care Professionals (MALCP). There are two advisory seats filled by the University of Massachusetts and the University of Rhode Island respectfully.

The 17th Annual Conference and Show was held in Providence, RI on March 3-6, 2014 and attended by 1800 turfgrass professionals. With 64 hours of education and 13 hours of trade show time attendees were kept very busy over the 4 days. Sessions included Golf, Sports Turf, Lawn Care & Landscape, and Equipment Technicians. Speakers were a mix of local professors and turfgrass managers with many from outside the New England Region. The featured speaker this year was the Director of Grounds of Fenway Park in Boston, David Mellor. David spoke on his experiences and all that occurred in Boston over the last year including the effects of the Marathon Bombing and the Red Sox surprising ride to their 3rd World Series triumph in 10 years! More than 160 exhibitors supported the trade show, and preparations are well on their way for a very early 18th conference and show. The 2015 show dates are: January 26-29, 2015 in Providence, RI. For more information on the show and New England Turfgrass Research please visit our website: www.nertf.org.



Picture Above: 2014-2015 NERTF Executive Board
Front Row (l to r): Clifford Drezek (Treas.), John Clark (2014-15 Pres.), Matthew Crowther, CGCS (VP) & Back Row: Steve Mann, CGCS (2013-14 Past-Pres.) & Randy Weeks, CGCS (Sect.)

Avoiding Blunders When Sharing a Meal

Dining etiquette is about more than which fork to use or which butter plate is yours or where to put your napkin when you leave the table. It also addresses the dilemmas that occur almost every time you sit down at the table. Here are six potential missteps and how to deal with them to help make you more at ease:

When to start eating. Your plate of delicious-looking food is set in front of you, but a couple of people at the table haven't been served yet. Hold back from picking up your knife and fork and wait until your host invites you to start or your host starts eating. If you're with colleagues and your plate hasn't arrived, the polite thing to do is to encourage the people who have been served to begin eating. If the meal is buffet style, however, it is acceptable to begin eating when you sit down at the table. Other people at the table may be at the back of the line and waiting for them would leave you eating cold food.

Your knife, fork, or glass is not clean. Don't make a big deal about it by announcing the problem to everyone at the table. Get your server's attention and quietly ask for a new one.

"There's a fly in my soup." You spot something that shouldn't be floating in your soup, or you notice a hair on your vege-

table. Again, making a scene isn't your goal. Correcting the problem is. Stop eating if you've started, calmly get your server's attention, and ask for a fresh serving.

Someone at the table has spinach stuck on a tooth or a piece of food on a chin. Try catching their eye and then make a quick motion with your finger like you're wiping something off your chin or mouth. Chances are, that signal alone will be more than enough to alert your dining companion. If not, you can say something quietly like, "John, there's something on your chin."

What do you do if you have something on your chin or spinach stuck on a tooth? A quick wipe with your napkin should deal with the item on your chin. However, rummaging around in your mouth with your finger or using a toothpick to fix your tooth is not a good idea when you are at the table. Excuse yourself and make a visit to the restroom to take care of it.

"Take that with you?" Restaurants often serve overly large portions. Yet, at a business lunch or dinner forgo the "to-go bag" unless you are out with colleagues and are splitting the bill. ❖

By Don Hearn

Update & Upgrade your pumps



STOP OPERATING OLD INEFFICIENT PUMPS

STOP FREQUENT DOWN TIMES

STOP CROSSING YOUR FINGERS DURING A HEAT WAVE

CALL PROFESSIONAL PUMP TO UPDATE & UPGRADE PUMPING SYSTEM

Centrifugal, submersible & vertical turbine Franklin Electric offers the best pumps for your golf course irrigation needs.

Franklin Electric...its what the pros at Professional Pump install.



Franklin Electric

Professional Pump Co.

1-508-747-3838

Pumps, Controls, Emergency Services

Thoughts From Your Association Manager

Recently it was announced by the USGA that Salem Country Club in Peabody, MA would be the site of the 2017 US Senior Open. The event will be played June 29 through July 2, 2017.



This will be the sixth time the club will host a USGA event. This will also be the third USGA Championship that Superintendent Kip Tyler, CGCS, will have hosted since his arrival at Salem over 30 years ago. Kip, a thirty-two year member of the GCSA of New England, previously hosted the 1984 US Women's Open and the 2001 US Senior Open at Salem.

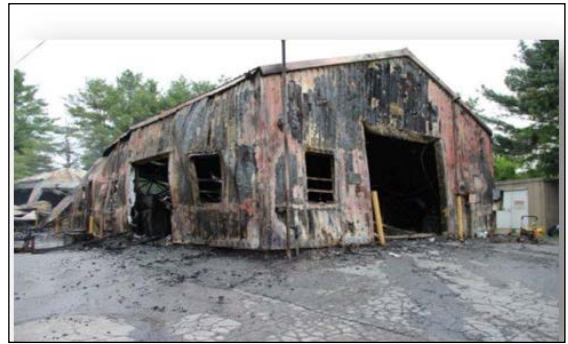
The U.S. Senior Open Championship was first played in 1980. The championship is open to any professional and amateur golfer who is 50 years of age with a Handicap Index® not exceeding 3.4.



Matt DeAvila hosted the MGA's Open Championship, June 10-12 at The Weston Golf Club. Matt and his team worked tirelessly to present the course at its finest for the field that played in the event.



Matt DeAvila explaining course conditions during Media Day at Weston Golf Club



Photos courtesy North Reading Police Dept.

These photos are of what remains of the maintenance building after a disastrous fire at the Thomson Country Club in North Reading, MA where GCSA of New England Member Ted Perry is the Superintendent. The fire took place during the early morning hours of June 1, 2014. In addition to North Reading, fire departments from Middleton, Wilmington, Reading, Lynnfield and Wakefield assisted to put out the blaze. Neighbors reported multiple explosions coming from inside the burning structure, "most likely caused by maintenance equipment tires that were expanding from the high heat and exploding," North Reading police said in a statement. The building and equipment were total losses.

Demo Day, held June 9, at Blue Hill Country Club was a successful event for attendees and exhibitors. Almost 200 people attended. This event, the brainchild of Brian Skinner, nurtured to fruition by Mark Casey, was the first such event produced by the GCSA of New England. Brian and



All set and ready to go!

Mark worked tirelessly to make sure all the details were taken care of. Hats off to host superintendent Jason Adams and his team at Blue Hill for

the coordination of the exhibitor sites, equipment set up, material placement and all the other details needed to make the event work smoothly. The food service was excellent and the patio setting was superb. The feedback has been positive and good ideas have been suggested for future events. ❖

By Don Hearn

Kevin Doyle - GCSAA Updates



The need to update you on the EPA and Army Corp of Engineers proposed changes to "Waters of the U.S." is great, but honestly I have focused on that frequently in The Newsletter lately. So this time I go off topic, sort of. What I will focus on the unseen value GCSAA brings to you. Not from my perspective, but from that of a GCSAA Class A member. How does a member go from newly appointed chapter president to an invited guest for a meeting with EPA District 1 within six days? Let us look at a timeline on how that happened and where value plays a role:

- June 9-11: GCSAA's Chava McKeel, associate director, government relations attended meetings in Washington, D.C., relating to Clean Water Act, pesticide regulations, labor issues and more.
- June 13: The Vermont Agency of Agriculture representative contacted McKeel (the connection was made earlier that week in D.C.), informing her of an EPA site visit to Vermont to discuss proposed changes to the "Waters of the U.S. (WOTUS)." They asked if there was a GCSAA representative who could attend?
- June 14-16: Communications continued through weekend and into early following week.
- June 17: I was invited to the meeting.
- June 18: Board of Directors meeting with VtGCSA, which was GCSAA Class A member Jason Shattie's first as chapter president. During the meeting, an Email arrived offering an invitation for a Vermont superintendent to participate in the EPA meeting. Shattie, as president, accepted the invitation

- June 23: McKeel and I discussed WOTUS and the ramifications on the golf industry via conference call.
- June 24: EPA Meeting Day. Shattie and I met at his facility (Burlington Country Club) in the early afternoon to discuss WOTUS and the ramifications to his facility and the golf industry. That evening, approximately 40 people met with EPA and Vermont State Department of Agriculture at University of Vermont.
- June 25: I followed up with a visit to BCC during a rain event registering over 1.0 inches of precipitation.

Shattie's Burlington CC is not unlike many golf courses across the country. The property is part of a storm water runoff plan, including the surrounding neighborhood and the adjacent UVM campus. This increased flow of water during periods of average and above-average rainfall causes more than the usual issues when it rains. The proposed changes to WOTUS are destined to create a significant burden at BCC. The inclusion of these "ephemeral waters" may create an issue at most golf courses. Originally designed to move water off the playing surfaces to underground drainage, surface drainage ditches, or into small waterways through out of play areas, these areas may now require a federal National Pollutant Discharge Elimination System (NPDES) permit to

continued on page 6



WINFIELD

WinField is more than just a distributor. Our team provides customized solutions for your business using our industry-leading insights tools. When you team up with WinField, you can be confident you're maximizing your potential. Because we deliver service, solutions and insights designed to help you win.

Jim Favreau

Massachusetts

(978) 815-9810

JLFavreau@landolakes.com

Chris Bengtson

SE Massachusetts & Rhode Island

(978) 360-0981

CRBengtson@landolakes.com



WinField is a trademark of WinField Solutions, LLC.
© WinField Solutions, LLC, 2014.

maltby and company

natural tree

& LAWN CARE

Massachusetts Certified Arborists



- Tree Pruning, Removal & Planting
- On-site Wood & Leaf Grinding
- Plant Healthcare
- Integrated Pest Management
- Mulch Products
- Air Spading



maltbytree.com

(781) 344-3900

apply chemicals to. In Shattie's case, both of the following pictures represent areas that could fit the above profile:

Both areas require the responsible use of pesticides. The permit will be expensive and take time to apply for and receive, if granted. These will both affect the operations at his facility. If these pictures represent similar areas at your



facility, you could be impacted as well.

As the above timeline shows, actions being taken that you do not see can be impactful, and have tremendous value. Golf's representation at that EPA meeting in Vermont left an impression on those in the state and at EPA; golf course superintendents are engaged in protecting the property we are entrusted to maintain. These efforts, in addition to communicating golf course superintendents as environmental stewards, are promoting golf as a solution, not the problem.

The opportunity given to one member to learn about the challenges to golf with the new Waters of the U.S. and become engaged has given our industry an extremely motivated individual working to protect our profession. Could the next engaged member be you?

Please ask your U.S. senator through GCSAA's WOTUS action alert in [Government Relations Online](#) to co-sponsor this important piece of legislation to the golf industry!

[GCSAA Resources and Deadlines](#)

GCSAA operations surveys

Did you know that GCSAA directories were available online to all GCSAA members? Located under the "Community" tab are the resources to reach out to your colleagues coast to coast, or right in your back yard!

You Get
Cool
Stuff
Already from your
Association

Directories:
[Membership directory](#)
[Chapter directory](#)
[Committee directory](#)

GCSAA Grassroots Network - Building our Grassroots Army

Advocacy is one of the most powerful ways to impact public policy. Successful association advocacy and lobbying efforts depend upon establishing strong relationships with elected officials. Ad hoc advocacy makes it hard to build strong, long-term relationships with elected officials and have a positive impact on policy decisions.

The GCSAA Grassroots Network is a new, dedicated group of GCSAA members who want to engage in the association's government relations efforts.

Being part of the GCSAA Grassroots Network gives you the opportunity to:

- Learn about legislative and regulatory issues affecting the golf course management profession
- Learn about GCSAA's advocacy activities
- Actively participate in the association's government relations efforts
- Communicate with your legislators about issues critical to the golf industry
- Learn about upcoming GCSAA Grassroots Network events
- Become part of a movement standing up for the golf course management profession and golf industry

continued on page 7

Individuals in the GCSAA Grassroots Network also have the opportunity to serve as a [GCSAA Grassroots Ambassador](#). GCSAA will give its Grassroots Ambassadors personalized training on building relationships with Members of Congress.

Give your dog its day in the limelight!

If your golf course has a four-legged friend with plenty of personality, enter your dog as a potential calendar canine in LebanonTurf's 2015 Dog Days of Golf calendar.

If selected for the calendar, your dog will also have a chance to be crowned the 2015 Dog of the Year, garnering a \$3,000 prize for your affiliated chapter and a \$500 prize for you! In addition, a donation to a charitable cause will be made in honor of the winner. Everyone who submits a photo will receive a gift from LebanonTurf. Click [here](#) to enter your pooch! Deadline August 1, 2014.

Reminder: Take ADA survey by Aug. 1

On behalf of the golf industry, the PGA of America is hosting a survey on accessible golf programs for individuals with disabilities. This brief survey consists of 21 questions and will take no longer than 10 minutes to complete to help us assess the status of accessible golf programming (linked on the home page at GCSAA.org and [here](#).)

Upcoming FREE webcasts:

- **Sept. 17: Herbicide Resistance in Turf: An Emerging Issue Facing Golf Course Superintendents**
- **Sept. 25: Soil Physical and Chemical Properties – The Analogy Webinar**
- **Oct. 8: Today's Turf is Creeping Bentgrass**
- **Oct. 23: Grow Your Own! The Value in Veggies**

Again, if I can be of any assistance, please feel free to contact me. ❖

Kevin Doyle
GCSAA Field Staff
kdoyle@gcsaa.org
Follow me on Twitter [@GCSAA_NE](#)

IDENTIFICATION OF TURF DAMAGING DISEASES WORKSHOP

Event Date: Tuesday, July 29, 2014

Time: 9:00 AM – 2:00 PM

Location: UMass Amherst Campus Center & UMass Joseph Troll Turf Research Center, South Deerfield, MA

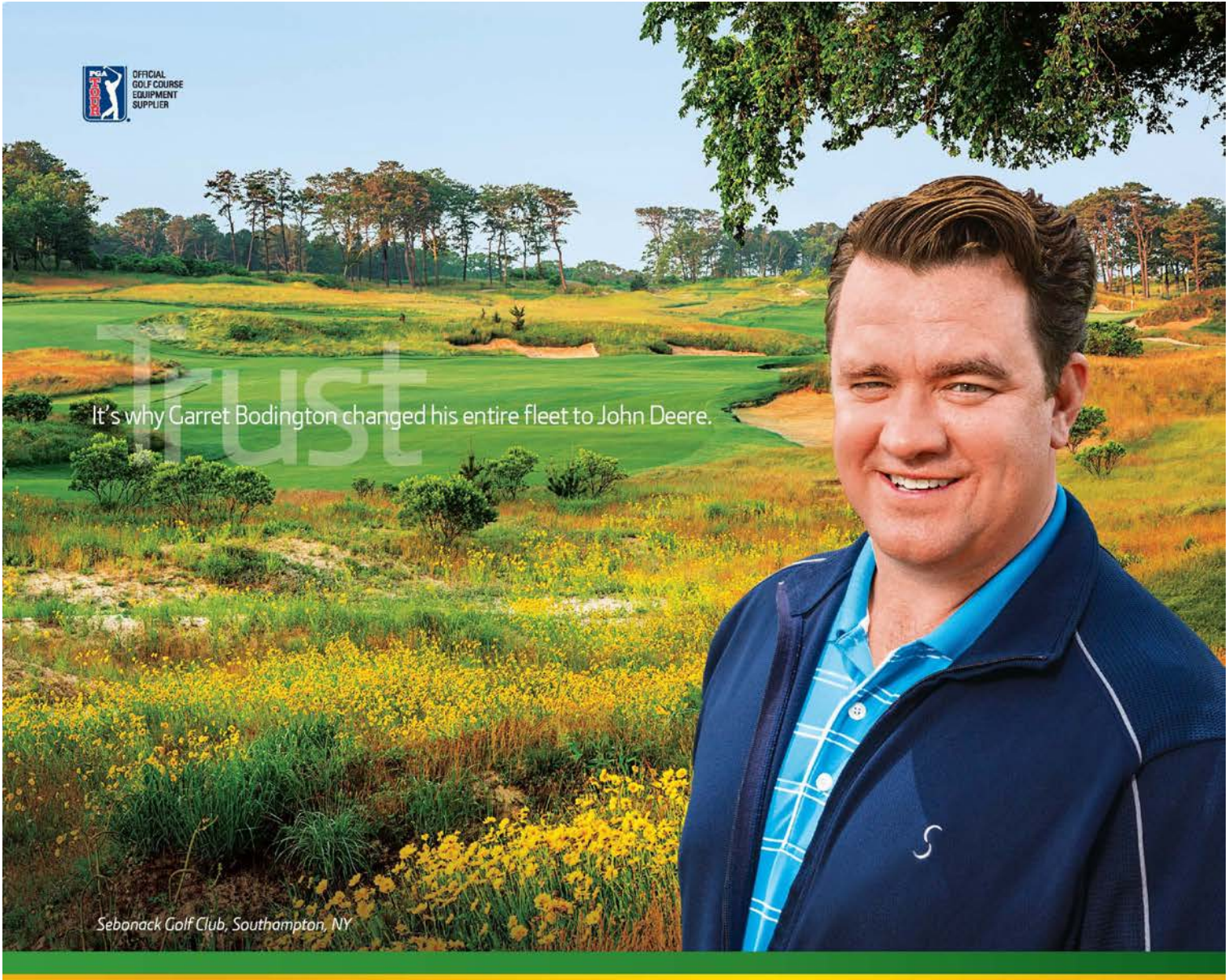
Accurate identification of turf damaging pests is the first step toward effective, integrated management. Knowing the target pest is key to understanding the biology and life cycle, determining threshold levels for damage, and making informed and responsible control decisions. UMass Turf Pathologist Geunhwa Jung will lead this session focusing on the identification of turf disease pathogens common in the Northeast. Diseases covered will include patch diseases, root diseases, stress diseases, dollar spot, snow molds, anthracnose, red thread and rusts. Lecture material will be coupled with examination of turf in the field, and IPM considerations and resistance management will be highlighted.

Up to 4 pesticide re-certification contact hours have been requested for all New England states, as have education credits for various professional turf certifications.

Pre-registration is required as space is limited. The registration deadline is July 25, 2014.

For more information and to register visit:

<http://extension.umass.edu/turf/events/diseaseid>



It's why Garret Bodington changed his entire fleet to John Deere.

Sebonack Golf Club, Southampton, NY

With the US Women's Open coming to Sebonack in 2013, Garret Bodington made the decision to go with John Deere. Why? "John Deere gave us tremendous support for the Women's Open, from existing equipment to loaners. Also, the E-Cut™ Hybrid technology was a big selling point. We use E-Cuts on every fairway and every green." From E-Cut Hybrid technology to heavy-duty utility vehicles, Garret trusts his entire course to John Deere. To see the difference we can make on your course and call your John Deere Golf distributor today.

Trusted by the best courses on Earth.

58220



JohnDeere.com/Golf



(800) 560-3373 • LacorteEquipment.com



MTE is your source for all of your turf equipment needs!



When Performance Matters.



For these and more, visit or call us:

**118 Lumber Lane
Tewksbury, MA 01876
(978) 654-4240
www.mte.us.com**

Total Solutions

For over 40 years, Turf Products continues to be the single source supplier for all your irrigation and turf management equipment, delivering superior quality and unmatched customer service to the golf industry.



turf products



From drainage pipe to chainsaws
TPC can supply all your golf course needs.
Pond aerators, ball washers, soil sensors and
lightning detectors are just a few of the
thousands of items we carry.

For All Equipment & Irrigation:
PARTS DIRECT: (800) 296-7442
Email: partsdept@turfproductscorp.com
SERVICE DIRECT: (800) 442-9910
Email: servicedept@turfproductscorp.com
MAIN OFFICE: (800) 243-4355
www.turfproductscorp.com

GCSANE Calendar of Events 2014

- April 28** **Cohasset Golf Club - 8th Annual Bear Cup**
Joint meeting with GCSA of Cape Cod
- May 5** **Worcester Country Club**
Joint meeting with Rhode Island GCSA
- May 12** **Alumni Turf Group - 10th Annual Dr. Joseph**
Troll Classic - Old Oaks Country Club
- June 9** **Challenger Demo Day**
Blue Hill Country Club
- June 30** **Walpole Country Club**
Scholarship & Benevolence Tournament
- August 12** **Marlborough Country Club**
Individual Championship
- Sept. 8** **Renaissance - Two Person Team Championship**
- Oct. 7** **New England Superintendent Championship**
Omni Mt. Washington Resort, Bartlett, NH
- Oct. 14** **Dedham Country and Polo Club**
Member-Guest
- Oct. 22** **William J. Devine Golf Course at Franklin Park**
Assistants Tournament
- Nov. 6** **Sassamon Trace Golf Course**
Nine-Hole Meeting

Arysta Life Science

Earn Educational Dollars for Your GCSAA Chapter

Arysta LifeScience donating to Northeastern Chapters through August 2014

Arysta LifeScience is offering superintendents the opportunity to generate funding for their local Golf Course Superintendents Association of America (GCSAA) chapters by purchasing Arysta LifeScience products. Funds then will be used throughout the Northeastern United States to support ongoing education. Arysta LifeScience will make financial contributions to local GCSAA chapters based on a percentage of proceeds from superintendents' purchases of DISARM® Fungicide, XONERATE® Herbicide and ALOFT® Insecticide through August 2014.

Superintendents may make qualifying purchases during two select time periods: a fall purchase period, Sept. 2-Dec. 7, 2013; and an in-season purchase period, Dec. 8, 2013-Aug. 31, 2014. Purchases through Dec. 7, 2013, will generate a 2% rebate to the GCSAA chapter of your choice (Premium Value); purchases from Dec. 8, 2013-Aug. 31, 2014, will generate a 1% rebate to your chapter (Base Value).

Additionally, superintendents participating in this program must be GCSAA members in good standing from one of the following chapters: Connecticut, New England, Cape Cod, Rhode Island, New Hampshire, Vermont or Maine. To learn more on required purchases and to receive program enrollment forms, visit your local authorized Arysta LifeScience distributor.

For additional information, contact your local Northeast GCSAA Chapter or Arysta LifeScience Northeast Territory Sales Manager Eric Gerhartz, phone 570/269-6061 or email eric.gerhartz@arysta.com.

THE UNIVERSITY OF CONNECTICUT INVITES YOU TO THE

UConn
COLLEGE OF AGRICULTURE
AND NATURAL RESOURCES

4th BIENNIAL UCONN TURFGRASS FIELD DAY SAVE THE DATE, JULY 15, 2014

AT THE PLANT SCIENCE RESEARCH AND EDUCATION FACILITY IN STORRS, CONNECTICUT



For more information and to register, visit
www.regonline.com/turfgrassfieldday2014

The 2014 Turfgrass Field Day at the University of Connecticut offers exciting educational opportunities for turfgrass professionals of all levels.



The date of the Field Day has been selected in order to provide the best

opportunity to view the research plots when they are under the greatest summer stress. Cutting edge research in the areas of lawn care, sports and golf turf management will be presented.

Attendees will have an opportunity to discuss ongoing research and management concerns with the UConn turf team. In addition to seeing the latest



research results, turfgrass professionals have the opportunity to interact with exhibitors and discuss the latest developments and challenges in the industry.

AGENDA:

7:30	Registration opens/continental breakfast
7:30-8:45	Visit with exhibitors, silent auction opens
8:45-9:00	Welcoming remarks
9:00-11:30	Guided tour of research plots
11:30-12:00	Visit with exhibitors
12:00- 1:00	Lunch
12:30	Ice cream social with exhibitors in vendor section
12:30	Silent auction ends
1:00-3:00	Visit with exhibitors
1:30-3:00	Afternoon Workshops (Separate registration required)
	• Turfgrass Disease Identification and Management Walking Tour
	• Use of Beneficial Nematodes for Insect Pest Management
	• New Technologies for Nutrient and Water Management

Pesticide and certification credits will be available

Early registration deadline is July 3, 2014.



TURFGRASS SCIENCE PROGRAM | DEPARTMENT OF PLANT SCIENCE AND LANDSCAPE ARCHITECTURE

ANNOUNCEMENTS

Congratulations to Greg Bennett and his wife, Lija, who welcomed their daughter, Graelynn Kane Bennett, to our world 6/23/14!

MASSACHUSETTS GOLF ECONOMY MAKES AN IMPACT

The Massachusetts Golf Association (MGA) released an economic impact study on May 22, 2014. It's a good look at what's been happening with golf economically over the past few years and has lots of interesting data. The report can be accessed at the following link:

<http://www.massgolfeconomy.com/>.

As in the past, *The Newsletter* continues to invite Affiliate members to submit a press release about new personnel, new products or a company bio. We will print each and every release **free of charge**. This is a great way to advertise for free. Who said nothing in this world is free? Free advertising to better your company, wow what an offer.

Important Notice

Federal Registration of NemaCur will expire on **October 6th 2014**. Existing inventory must be applied before the Federal registration expires. Inventories of NemaCur after Oct. 6 2014 should be disposed of through proper channels. Applications cannot be legally applied after Oct.6, 2014. Please see the link listed below for further details.

[http://www.regulations.gov/#!
docketDetail;D=EPA-HQ-OPP-2003-0200](http://www.regulations.gov/#!docketDetail;D=EPA-HQ-OPP-2003-0200)

SYNGENTA BUSINESS INSTITUTE 2014

Golf course superintendents seeking to enhance their business acumen can now apply for the 2014 [Syngenta Business Institute™](#) (SBI). Through SBI, Syngenta partners with the nationally-ranked [Wake Forest University School of Business](#) to provide superintendents with heightened business and managerial skills.

The sixth annual **SBI will take place Dec. 8-11, 2014**, in Winston-Salem, N.C. Syngenta receives more than 80 applications annually and approximately 25 superintendents are chosen to attend the program.

Selected participants will learn business management practices presented by Wake Forest University faculty including: financial management, human resources management, delegation skills, effective communication, negotiation tactics and more. To be considered, candidates must complete the application, which includes an essay on why they should be selected, relevant professional experience and educational background.

To learn more about the Syngenta Business Institute and how you can apply, please visit GreenCastonline.com/SBI or contact your local [Syngenta territory manager](#).

Completed SBI applications are due Tuesday, Aug. 19, 2014. Participants will be notified of their acceptance into the 2014 Syngenta Business Institute class in October.



GCSANE Offers Website Banner advertising at www.gcsane.org

The price is \$500 for one year which will be re-occurring annually from your first billing unless otherwise specified.

**For more information, please contact Jeff Urquhart
at 781-828-2953 or jmartin101@gmail.com**

Please Patronize these FRIENDS of the ASSOCIATION

Page 1

Agresource, Inc.

100 Main St., Amesbury, MA 01913
Quality Compost, Soil & Mulch.
Tim Gould (978) 388-5110
www.agresourceinc.com

Agrium Advanced Technologies Direct Solutions

Suppliers of Chemicals, Fertilizer, and Grass Seed
Jim Pritchard (401) 259-8-5472 jpritchard@agriumat.com
Glenn Larrabee (401) 258-3762 glarrabee@agriumat.com

Allen's Seed

693 S. County Trail, Exeter, RI 02822
Specializing in quality seed, fertilizer, chemicals, and related golf course maintenance supplies.
Peter Lund (401) 474-8171
www.allensseed.com

Atlantic Golf and Turf

9 Industrial Boulevard, Turners Falls, MA 01376
Specializing in agronomy through the distribution of fertilizer, seed and chemicals throughout New England.
Chris Cowan (413) 530-5040, Scott Mackintosh CPAg (774) 551-6083, Michelle Maltais (401) 835-0287

A-OK Turf Equipment Inc.

1357 Main St., Coventry, RI 02816-8435
Lastec, Tycrop, Blec, Wiedenmann, Therrien, Graden, Sweep & Fill, Baroness, and used equipment.
Mike Cornicelli (401) 826-2584

Arysta Life Science

15401 Weston Parkway Suite 150, Cary, NC 27513
Products for the industry.
Eric Gerhartz (570) 269-06061

Barenbrug USA

Great in Grass
10549 Hammond Hill Road, East Otto, NY 14729
Bruce Chapman, Territory Manager (401) 578-2300

BASF Turf & Ornamental

PO Box 111, West Dennis, MA 02670
"We don't make the turf. We make it better."
Pete Jacobson (919) 530-9062 peter.jacobson@basf.com

BACKED by BAYER

Building on an already solid foundation of proven products to help you succeed. Brian Giblin (508) 439-9809 brian@bayer.com
www.backedbybayer.com

Boston Irrigation Supply Co. (BISCO)

60 Stergis Way, Dedham, MA 02026
New England's single source for a complete line of irrigation and pumping equipment featuring Rain Bird, plus landscape lighting, drainage, tools and all related accessories. www.gobisco.com
Andrew Langlois, Jeff Brown (800) 225-8006
Bill Stinson (413) 668-7943, AJ Dart (857) 998-9730

The Cardinals, Inc.

166 River Rd., PO Box 520, Unionville, CT 06085
Golf course and landscape supplies.
John Callahan (860) 916-3947, Dennis Friel (617) 755-6558

Cavicchio Greenhouses, Inc.

110 Codjer Lane, Sudbury, MA 01776
Annuals, perennials, garden mums, ground covers, loam, & mulch.
Darren Young (978) 443-7177

Charles C. Hart Seed Co., Inc.

304 Main St., Wethersfield, CT 06109
Authorized distributor for Bayer, Syngenta, Grigg Brothers foliar fertilizers, and Aquatrols. Specializing in custom seed blends.
Robin Hayes (508) 237-2642 Dick Gurski (413) 531-2906
Mike Carignan (603) 540-2562

Country Club Enterprises

PO Box 670, 29 Tobey Rd., W. Wareham, MA 02676
Club Car golf cars, Carryall utility vehicles.
Dave Farina, Keith Tortorella, Mike Turner (800) 662-2585

DAF Services, Inc.

20 Lawnacre Rd., Windsor Locks, CT 06096
Custom pumping solutions. Custom pump controls. Complete pump service. Serving all of New England.
Dick Young (860) 623-5207

DGM Systems

153A Foster Center Road, Foster, RI 02825
Your New England specialty products distributor: Reelcraft, POK, Allen, Kenyon, Echo, Carhartt Office (401) 647-0550
Manny Mihailides (401) 524-8999
David Mihailides (401) 742-1177

DHT Golf Services

8 Meadow Park Road, Plymouth, MA 02360
Serving the GCSANE for over 20 years. Planning to proposal to completion. Golf construction and irrigation consulting.
Emergency irrigation repairs. Dahn Tibbett (20 year member), Jaime Tibbett (508) 746-3222 DHTGOLF.COM

Five Star Golf Cars & Utility Vehicles

724 MacArthur Blvd.
Pocasset, MA 02559
E-Z GO Golf Cars, Cushman Utility Vehicles
Doug Hopper (401) 787-0514

G. Fialkosky Lawn Sprinklers

PO Box 600645., Newton, MA 02460
Irrigation services to golf courses throughout New England.
Gary Fialkosky (617) 293-8632
www.garyfialkoskylawnsprinklers.com

Harrell's LLC

19 Technology Drive, Auburn, MA 01501
Turf & Ornamental supplies. John Bresnahan (413) 374-4102, Chuck Bramhall (508) 400-0600, Jim Cohen (978) 337-0222.
Mike Kroian (401) 265-5353, Mike Nagle (508) 380-1668

Hartney Greymont

433 Chestnut Street, Needham, MA 02492 www.hartney.com
Hartney Greymont is a company that specializes in tree care, landscape services, strategic woodland management and plant healthcare. Michael Colman (781) 727-7025
Scott McPhee, District Manager (617) 293-1112

continued on next page

Please Patronize these FRIENDS of the ASSOCIATION

Helena Chemical Company

101 Elm Street, Hatfield, MA 01038 www.helenachemical.com
National distributors of all your turf chemicals and fertilizers.
Extensive line of Helena Branded wetting agents, foliar, micronutrients and adjuvants.
Louis Bettencourt, CGCS (978) 580-8166
Chris Leonard (339) 793-3705

Hillcrest Turf Services

P.O. Box 767, Medfield, MA 02052
Mike Parks (617) 852-0479
Providing specialty cultural services to golf courses and sports turf.

International Golf Construction Co.

5 Purcell Rd., Arlington, MA 02474
Golf course construction. Antonios Paganis (781) 648-2351;
(508) 428-3022

Irrigation Management & Services

21 Lakeview Ave., Natick, MA 01760
Irrigation consultation, design, and system evaluation.
Bob Healey, ASIC, CID (508) 653-0625

John Deere Landscapes

Offering our customers the most complete line of products, service and expertise in the industry. Ron Tumiski (800) 321-5325 x6219

Ken Jones Tire, Inc.

71-73 Chandler St., Worcester, MA 01613
Distributor of tires for lawn & garden, trucks, cars, industrial equipment, and golf cars. Gerry Jones (508) 755-5255

LaCorte Equipment

LaCorte Equipment is your premier John Deere Golf Distributor in the Northeast.
Gale Stenquist (631) 727-8700
John Winskowicz (978) 471-8351
Bill Rockwell (508) 789-5293
Dan Paradise (978) 853-2916
Call or visit our website at www.lacorteequipment.com

Larchmont Engineering & Irrigation

11 Larchmont Lane, Lexington, MA 02420
Offering a full range of inventory for irrigation drainage, pumps, fountains and landscape lighting products and services for all of your residential and commercial needs.
(781) 862-2550 Susan Tropeano,
Tim Fitzgerald tim@larchmont-eng.com

Lazaro's Golf Course Supplies & Accessories

dba Hammond Paint and Chemical Co., Inc.
738 Main St., Suite 223, Waltham, MA 02154
Complete line of golf course accessories; Standard, Par Aide, Eagle One. Joe Lazaro (781) 647-3361

Maher Services

71 Concord Street, N. Reading, MA 01864
Well drilling, pump service and well maintenance
Peter Maher cell: (781) 953-8167 or (978) 664-WELL (9355)
Fax (978) 664-9356 www.maherserv.com

MAS Golf Course Construction LLC

60 Hope Ave., Ste. 107, Waltham, MA 02453
Fulfilling all your renovation and construction needs.
www.masgolfconstruction.com Matthew Staffieri (508) 243-2443

Maltby & Company

30 Old Page Street, P.O. Box 364, Stoughton, MA 02072
Provides expert tree pruning, tree removal and tree planting services. Our two other divisions include Natural Tree & Lawn Care, which treats for winter moth caterpillars, ticks and mosquitoes etc. Forest Floor recycling manufactures color enhanced mulch and natural composted leaf mulch. For more information or to speak with one of our arborists please call Bill Maltby at (781) 344-3900

McNulty Construction Corp.

P. O. Box 3218, Framingham, MA 01705
Asphalt paving of cart paths, walkways, parking areas; imprinted asphalt. John McNulty (508) 879-8875

MTE, Inc. – Turf Equipment Solutions

118 Lumber Lane, Tewksbury, MA 01864
New England's source for equipment sales, service and parts. New and pre-owned mowers, tractors, attachments and much more from: Jacobsen, Turfco, Smithco, Ventrac, Redexim, Neary Grinders, Ryan, Buffalo Turbine, Mahindra, Husqvarna, Gravely, Standard, Par-Aide and others. Office: (978) 654-4240.
Mark Casey: (617) 990-2427. Matt Lapinski: (978) 551-0093

Mungeam Cornish Golf Design, Inc.

195 SW Main Street, Douglas, MA 01516
Golf course architects
Office: (508) 476-5630
Cell: (508) 873-0103
Email: info@mcgolfdesign.com
Contact: Mark A. Mungeam, ASGCA
www.mcgolfdesign.com

New England Specialty Soils

435 Lancaster, Street, Leominster, MA 01453
1mm. Top Dressing Sand, High Density Bunker Sand, Rootzone Mixes, Tee Blends, Divot Mixes, Bridging Stone, Cart Path Mix, Infield Mixes, Inorganic Amendments, SLOPE LOCK Soil.
Ed Downing (978) 230-2300, Dave Harding (978) 230-2244
www.nesoils.com

New England Turf

P.O. Box 777, West Kingston, RI 02892
Phone: (800) 451-2900 or Ernie Ketchum (508) 364-4428;
Mike Brown (508) 272-1827 www.newenglandturf.com

NMP Golf Construction Corp.

25 Bishop Ave., Ste. A-2, Williston, VT 05495
Golf course construction. Mario Poirier (888) 707-0787

Northeast Golf & Turf Supply

6 Dearborn Road, Peabody, MA 01960
Complete line of Golf Course, Landscape & Lawn Care Construction and Maintenance Supplies
Tom Rowell (978) 317-0673

North Shore Hydroseeding

20 Wenham St., Danvers, MA 01923
Hydroseeding and erosion control services.
Brian King (978) 762-8737 www.nshydro.com

On-Course Golf Inc., Design/Build

16 Maple Street, Acton, MA 01720
We serve all your remodeling and renovation needs. You can trust your project with us! We make you look good!
Sean Hanley (978) 337-6661 www.on-coursegolf.com

continued on next page

Please Patronize these FRIENDS of the ASSOCIATION

Putnam Pipe Corp.

90 Elm St., Hopkinton, MA 01748
Underground water, sewer, & drain pipe and fittings-Erosion and sediment control material. 24-hour service.
David Putnam (508) 435-3090

Read Custom Soils

125 Turnpike St., Canton, MA 02021
Custom soil blending, top dressing sands, Root zone blends, "early green" black sand, divot & cart path mixes.
Terry Driscoll, Garrett Whitney (888) 475-5526

Select Source

3208 Peach Street, Erie, PA 16508
National, full line manufacturer and wholesaler of turf, ornamental and specialty chemical products.
Mike Blatt, Northeast Territory Manager (814) 440-7658

Slater Farms (Holliston Sand Products)

P. O. Box 1168, Tiff Rd., Slatersville, RI 02876
USGA recommended topdressing, root-zone mixes, compost, pea stone, angular & traditional bunker sand.
Bob Chalifour, CGCS (Ret.) (401) 766-5010 Cell: (860) 908-7414

Sodco Inc.

P. O. Box 2, Slocum, RI 02877
Bluegrass/Fescue, Bluegrass/Rye, Bluegrass/Fescue/Rye, Bentgrass. Pat Hogan (800) 341-6900

Southwest Putting Greens of Boston

P.O. Box 827, Westford, MA 01886
Synthetic turf, tee lines, practice greens, outdoor and indoor practice facilities. Douglas Preston (978) 250-5996

Stumps Are Us Inc.

Manchester, NH
Professional stump chipping service.
Brendan McQuade (603) 625-4165

Syngenta Professional Products

111 Craigmere Circle, Avon, CT 06001
Melissa Gugliotti (860) 221-5712

Tartan Farms, LLC

P.O. Box 983, West Kingston, RI 02892
Dave Wallace
(401) 641-0306

Tom Irwin Inc.

11 A St., Burlington, MA 01803
Turf management products. Paul Skafas, Rob Larson, Chris Petersen, Greg Misodoulakis, Fred Murray (800) 582-5959

Tree Tech, Inc.

6 Springbrook Rd., Foxboro, MA 02035
Foxboro, Wellesley, Fall River Andy Felix (508) 543-5644
Full service tree service specializing in zero impact tree removal, stump grinding, tree pruning and tree risk assessments by our team of Certified Arborists.

Tuckahoe Turf Farms, Inc.

P. O. Box 167, Wood River Junction, RI 02894
Joe Farina (774) 260-0093

Turf Products Corp.

157 Moody Rd., Enfield, CT 06082
Distributors of Toro irrigation & maintenance equipment and other golf-related products. Nat Binns (332) 351-5189,
Tim Berge (860) 490-2787, Andy Melone (508) 561-0364

Valley Green

14 Copper Beech Drive, Kingston, MA 02364
Phone: (413) 533-0726 Fax: (413) 533-0792
"Wholesale distributor of turf products"
Doug Dondero (508) 944-3262, Jon Targett (978) 855-0932,
Joe Trosky (860) 508-9875

Winding Brook Turf Farm

Wethersfield, CT 06109
Scott Wheeler, Sam Morgan (800) 243-0232

WinField

29 Gilmore Drive - Unit C, Sutton, MA 01590
Using industry-leading insights to provide you with the products that help you win.
Jim Favreau (978) 815-9810

NEW Lower Rates to Help Make Advertising in The Newsletter More Budget Conscious

THE NEWSLETTER 2014 DISPLAY ADVERTISING ORDER FORM

Company Name: _____ Phone # _____

Address: _____

Contact Name: _____ Email _____

Issues (List month and total number): _____

Amount of Check: _____ (Made payable to "GCSANE")

<u>Member Rates:</u>	Monthly Rate	4 Times Per Yr. (Save 5%)	6 Times Per Yr. (Save 10%)	8 Times Per Yr. (Save 10%)	Annual Rate (Save 15%)
<input type="checkbox"/> 1/4 page (vertical; 3.75" wide x 5" deep)	<input type="checkbox"/> \$ 90.00	<input type="checkbox"/> \$ 342.00	<input type="checkbox"/> \$ 486.00	<input type="checkbox"/> \$ 648.00	<input type="checkbox"/> \$ 918.00
<input type="checkbox"/> 1/2 page (horizontal; 7.5" wide x 5" deep)	<input type="checkbox"/> \$150.00	<input type="checkbox"/> \$ 570.00	<input type="checkbox"/> \$ 810.00	<input type="checkbox"/> \$1080.00	<input type="checkbox"/> \$1530.00
<input type="checkbox"/> Full Page (vertical; 7.5" wide x 10" deep)	<input type="checkbox"/> \$200.00	<input type="checkbox"/> \$ 760.00	<input type="checkbox"/> \$1080.00	<input type="checkbox"/> \$1440.00	<input type="checkbox"/> \$2040.00

Non-Member Rates: *All payments must be received in full before the ad appears in The Newsletter.

<input type="checkbox"/> 1/4 page (vertical; 3.75" wide x 5" deep)	<input type="checkbox"/> \$120.00	<input type="checkbox"/> \$456.00	<input type="checkbox"/> \$648.00	<input type="checkbox"/> \$ 864.00	<input type="checkbox"/> \$1224.00
<input type="checkbox"/> 1/2 page (horizontal; 7.5" wide x 5" deep)	<input type="checkbox"/> \$180.00	<input type="checkbox"/> \$684.00	<input type="checkbox"/> \$972.00	<input type="checkbox"/> \$1296.00	<input type="checkbox"/> \$1836.00
<input type="checkbox"/> Full Page (vertical; 7.5" wide x 10" deep)	<input type="checkbox"/> \$240.00	<input type="checkbox"/> \$912.00	<input type="checkbox"/> \$1296.00	<input type="checkbox"/> \$1728.00	<input type="checkbox"/> \$2448.00

***DEADLINE for ads: The first of the month for that month's issue.**

Ad Preparation Specifications:

File Specifications for Ads Supplied in Digital Format: Ads may be sent either by email or by mailing a CD to the address below. Formats preferred are .GIF; .JPG and .PDF. Ads can also be accepted in Microsoft Word or Microsoft Publisher files. Full color is available with all ads.

Advertising Design Services: Design services are available by request and consultation and will be billed separately.

Send all Newsletter ads to:

Julie Heston
36 Elisha Mathewson Road, N. Scituate, RI 02857
Phone: 401-934-7660 / Fax: 401-934-9901
jheston@verizon.net