

SERIALS

MAR 21 1973  
*March 1971*  
MICHIGAN STATE UNIVERSITY  
LIBRARIES



PROPERTY OF  
JAMES B. BEARD  
CROPS DEPT.  
MICHIGAN STATE UNIV.

# A Patch of Green

Official Publication of the

Michigan & Border Cities Golf Course Superintendents Association

# **MICHIGAN AND BORDER CITIES GOLF COURSE SUPERINTENDENTS ASSOCIATION**

## **PRESIDENT**

**WARD SWANSON**  
PLUM HOLLOW GOLF CLUB  
29642 Westfield, Livonia, Mich. (Res.)  
Off. 352-2436, Res. 421-8049

## **VICE PRESIDENT**

**TED WOEHRLE**  
OAKLAND HILLS COUNTRY CLUB  
Birmingham, Michigan  
Off. 644-3352, Res. 646-8512

## **SECRETARY - TREASURER**

**GERALD GILL**  
TAM-O-SHANTER COUNTRY CLUB  
3466 Walnut Lake Road  
Orchard Lake, Michigan  
Off. 626-8325

## **BOARD OF DIRECTORS**

**WILLIAM P. MADIGAN**  
COUNTRY CLUB OF JACKSON  
3135 Horton Road  
Jackson, Michigan

**C. H. WOLFROM, JR.**  
DETROIT GOLF CLUB  
Detroit, Michigan  
530 Kendry (Res.)  
Bloomfield Hills, Michigan  
Off. 345-4589, Res. 338-6375

**ANDREW A. BERTONI**  
HOLLY GREENS GOLF COURSE  
11450 Holly Road  
Holly, Michigan  
Off. 634-8241, Res. 349-1708

**ROBERT PRIESKORN**  
WESTERN GOLF & COUNTRY CLUB  
Detroit, Michigan  
721 Venoy Road (Res.)  
Off. KE 1-1549, Res. 721-6648

**ALBERT KALTZ**  
MAPLE LANE GOLF CLUB  
Sterling Heights, Michigan  
Off. 268-2130, Res. 463-2892

**DAVID S. MOOTE**  
ESSEX GOLF CLUB  
P.O. Box 130  
Sandwich, Ontario  
Off. 734-7815, Res. 966-1617

## **PRESIDENT EMERITUS**

**DONALD A. ROSS**  
HIGHLAND MEADOWS GOLF CLUB  
P.O. Box 197  
Sylvania, Ohio 43560  
Off. 882-6492, Res. 882-3113

## **"A Patch of Green"**

31823 Utica Road, Fraser, Michigan 48026  
(313) 293-3540

Published monthly by the Michigan and Border  
Cities Golf Course Superintendents  
Association

Circulation: 500

E. Blakeman, Blakeman Publications  
Editor

R. Briddick, Blakeman Publications  
Graphic Arts

## **ADVERTISING RATES**

Double Page Spread.....	\$100.00
Back Outside Page.....	65.00
Full Page.....	55.00
Half Page.....	35.00
Quarter Page.....	25.00
Eighth Page.....	12.50
Sixteenth Page.....	7.50
Classified Ad (per inch).....	5.00

## **DISCOUNT RATES**

One Year 10 %

# ***March Advertisers***

Agrico Chemical Company  
C. E. Anderson Company  
Century Supply Corporation  
Eugene D. Johanningsmeier  
Lawn Equipment Corporation  
Michigan Turf Specialties Corp.  
W. F. Miller  
Miller Sprinkling Systems  
National Chemsearch Corp.  
O. M. Scotts & Sons Company  
Turf Supplies, Inc.

# President's Message

The 42nd Annual International Turfgrass Conference and Show of the GCSAA was successfully held at the Currihan Convention Center in Denver, Colorado. In our history of these conventions this marks the first to be held in Denver; however, I doubt if it will be the last. Our thanks are extended to Greens Superintendent Larry Eggleston of Cherry Hills Country Club in Englewood, Colorado, for the fine job he performed as host. This was a well planned and executed program.

The only negative vein that bears comment was the absence of some of the large equipment manufacturers. Next time check your inventory to see if you have enough new tractors on hand.

My personal congratulations to our members for the excellent representation in Denver of our fine organization. This does much to show our intentions for future programming as well as cultivating the ideas and educational data we receive through our participation.

In retrospect I am sure we can all reminisce about the hospitality, accom-

modations and food. These items certainly are necessary for a successful and lasting impression on those in attendance. We thank Denver and the fine people involved in this undertaking.

Speaking of fine people and jobs well done - we can all have a good word for our delegate at large Bob Hope. Thanks Bob!

The conference was officially opened and welcomed to Denver by the good Governor John Love. This is gratefully appreciated for numerous reasons. Singly it represents recognitions that is due our profession. The importance we have in the total community is taking on more and more responsibility as time goes on. As recreation time increases throughout our country, it can be readily seen that our problems will have to be met with more stress on the educational factors presented to us now. The program and theme of education throughout the 42nd annual convention featured Pesticides, Irrigation and Budgets - which spotlights the fact that this is a profession and one that has little room for the nonlearner.

Welcome home gentlemen! Good luck in the application of what you have been exposed to in the approaching season.

Congratulations to members Leo Johnson and Joe Szilagyi who naturally don't need introductions, for their entry into the *Quarter Century Club*. May we all be members someday.

May all your grass and money be plentiful, the right kind and color - and may all your members' putts break six inches straight down at - The End.

Sincerely,  
Ward Swanson, President



## Golf Course CHEMICALS

Donald Benham  
NATIONAL CHEMSEARCH CORP.  
589 Abington Road  
Birmingham, Michigan  
626 - 1111

# Snow And Ice Removal

from

**"Winter Injury" By Milwaukee Sewerage Commission, Bulletin No. 5**

Even though we need and like snow cover, there is a time to get rid of most of it and this should be done before it melts to form an ice sheet in the spring. Dr. Beard isn't sure how much is too much, and until his extensive research proves otherwise, he is advising Michigan Superintendents to remove all but one inch of ice or snow from March on. Incidentally, snow fence is also used to keep snow away from areas that would otherwise be too heavily blanketed.

Dr. Beard is particularly concerned about too much water in the crown area of the plant. In his work so far, cold tolerance hardiness is related more to crown tissue hydration (water content) than any other factor. Beard maintains if the crown comes through the winter in good shape we can lose all the roots and still get recovery. Conversely, if the crown is too wet, and thus not hardy, the condition of the roots and leaves makes no difference. The turf may die, even under moderate cold temperature, following "green up" in the spring.

Interestingly, he has good correlation data to back up his theory. For example, the least cold tolerant grasses like *Poa annua*, the creeping red or Chewings fescues, and the more bunch type colonial bentgrasses have the highest hydration (percent water in the crown) as winter approaches. His theory also helps to explain why the drainage swales and cupping areas, or areas that are heavily thatched and thus tend to hold water, suffer the most often from ice sheet injury.

It may also explain why a weak grass with high crown moisture content will survive over one winter and be clobbered the next. The critical point probably can be traced to the type of winter experienced. If the soil



Ice and snow removal from #1 green at O Hills Country Club for rapid drainage from the green surface.

freezes solid in the fall and stays that way all winter with some snow cover to prevent desiccation and insulate against too much cold, survival will be high even for weak grass. But, when we get quick freezes followed by sudden thaws, then more freezes and thawing to increase moisture in the crown area, we can expect injury on even the highly cold tolerant creeping bent.

*Editor's notes:* The above comment prompted Dr. Beard to call some of the area Superintendents last month when we had the big thaw and rain. He was concerned about the standing water on the greens. His advice was to remove as much of the snow from the fronts of the greens as was possible to allow the excessive water to drain off the green. Many of us sent our crews out the next morning to remove the snow and ice from the greens. Our many thanks to Dr. Beard for his concern.

# Meet the Board



This month we feature Ted Woehrle, Vice President, Michigan & Border Cities Golf Course Superintendents Association.

Ted, came to us in 1968 from Beverly Country Club, Chicago,

where he spent nine years as Superintendent.

## Summer Warning

From An Article Presented At  
Purdue University, 1970  
by C. Y. Ward

*Frequent close clipping and nitrogen fertilization deplete carbohydrate reserves in grass tissue. It is believed that too much nitrogen weakens grass plants by stimulating excessive growth at the expense of reserve carbohydrates. Plants weakened in this manner are highly vulnerable to disease or other stress factors.*

Turfgrass managers of cool season turfgrasses are cautioned against the use of large amounts of nitrogen on turf during the hot summer season. Since close, frequent clippings reduces carbohydrate reserves, a more lax mowing regime is in order during periods of excessive heat or turf injury. For example, if you are mowing greens daily at 3/16 inch, it would aid the grass to raise the height of cut to 1/4 inch, and occasionally allow two days between mowings. This will allow for more leaf tissue to become active in photosynthesis and give it more time to accumulate increased reserves. The amount of increase may be slight, but a small difference may enable the turf to survive the rigors of a tournament, or a week of above normal temperature.

His background started on a course in Kankakee, Illinois, in 1946 working for his father. He graduated from Purdue University in 1954 with a B.S. in Agronomy. After spending two years in the Army he returned to civilian life working for Bob Williams at the Beverly Country Club as Bob's assistant. During the winter months he went to Florida and worked at the Country Club of Florida, Delray Beach, Florida under Norm Johnson.

In 1957 Ted became Superintendent of the Point-O-Woods Country Club, Benton Harbor, Michigan. He worked as Superintendent during the final stages of construction and then stayed on for one full year before returning to Beverly Country Club as Superintendent.

During this period Ted was president of the Midwest Association of Golf Course Superintendents in 1951, president of the Illinois Turfgrass Foundation in 1964 and 1965, editor of the "Bull Sheet" (publication of the Midwest) 1960 to 1965, president of the Midwest Regional Turf Foundation 1970, director of the Michigan Turfgrass Foundation at present.

Ted resides in Troy, Michigan with his wife Mary and their four children.

Presently he is Superintendent of the Oakland Hills Country Club, Birmingham, Michigan.

For The Latest and Best Call

## Turf Supplies, Inc.

6900 PARDEE, TAYLOR, MICH. 48180

- Agrico Country Club Fertilizers
- NEW DuPont Tersan 1991 (Benlate)
- The 3 other Tersan Fungicides, plus
- Daconil 2787, Acti-Dione & Fore!
- The Best in Bulk Grass Seeds
- Weed Killers, Insecticides, Sprayers and 8" Hose.

(313) 291-1200



# *Can We Help With Some Of Your Spring Work?*

## **MICHIGAN TURF SPECIALTIES CORPORATION**

642 S. MAIN STREET  
OFFICE: (313) 588-1777

CLAWSON, MICHIGAN 48017  
HOME: (313) 549-4328



### **RENTAL EQUIPMENT INVENTORY**

#### **RYAN GREENSAIRE - Model WG24-1**

Aerifies greens and tees at the rate  
of 6667 sq. ft./hour. 70.00

#### **RYAN REN-O-THIN**

Vertical mower for removing grain,  
thatch and pulverizing plugs. 25.00

#### **JACOBSEN-ROGERS - Model 548**

Aero-blade with seeder attachment.  
Ideal for overseeding established  
turf. 45.00

#### **SOD MASTER**

Powered top dresser for greens and  
tees. 38.00

#### **RYAN JUNIOR SOD CUTTER**

12" 25.00

#### **DITCH WITCH TRENCHER**

4" - 12" Wide, 0' - 5' deep. 54.00

#### **BEAN SPRAYER**

200 Gal. 50.00

**\*Will Provide Delivery And Pick-Up At Nominal Charge. All Rates Per Day.**

**THE TREES LISTED BELOW HAVE PROVED TO BE GOOD**

### **SPRING MOVERS**

**WE HAVE MANY OF THESE TREES IN DIFFERENT SIZES AVAILABLE!**

**BETULA (Birch)**  
**CORNUS (Dogwood)**  
**LIQUIDAMBAR (Sweet Gum)**  
**PRUNUS (Plum)**  
**SALIX (Willow)**  
**ACER RUBRUM (Red Maple)**

**CRATAEGUS (Hawthorn)**  
**QUEREUS (Oak - except Pin Oak)**  
**GLEDITSIA (Locust)**  
**FRAXINUS (Ash)**  
**SORBUS (Mountain Ash)**

**We have our own equipment and do our own work. Our 44" Vermeer Tree  
Spade is ideal for tree relocations on your site - Ask For Quotes!**

**\* representing: TERMINAL SALES CORPORATION**

**Douglas Forier**

## GCSAA Scholarship & Outstanding Senior Awards

Recipients of this year's GCSAA Scholarships were Stephen Stewart, Carl Bennett, Merrill Fullmer and Gregory Chipley. The scholarships were awarded by Norman Kramer, President of the GCSAA. James Smith, director of the Michigan Turfgrass Foundation, presented Joe Yoder the "Outstanding Senior" award, which is awarded for leadership and scholastic ability.

The surprise of the meeting came when Joe Yoder in turn presented John King, formerly of Michigan State with an award in appreciation for his work as Student Coordinator for the turf students while he was on the staff at MSU.



Left to Right: Top Row, Stephan A. Stewart, Carl Bennett and Norman Kramer, President of GCSAA. Bottom Row; Merrill P. Fullmer and Gregory W. Chipley.



Joe Yoder, center receiving the "Outstanding Student Award" from James Smith, right, Director of the Michigan Turfgrass Foundation, as Norman Kramer, left, President of the GCSAA looks on.

## 41st. Annual Michigan Turfgrass Conference

The 41st Annual Michigan Turfgrass Conference was a huge success despite the severe blizzard on the morning of January 26th. The snow slowed down the registration the first morning but by the time the conference was over 515 interested turf managers had registered.

Two members of the Michigan and Border Cities Golf Course Superintendents Association were elected to the Board of Directors of the Michigan Turfgrass Foundation. Gary Bartsch, Superintendent of Pine Lake Country

Club and George Priestkom, Superintendent of Burroughs Farm Golf Club were elected along with Robert Knoll, White Chapel Memorial Cemetery of Troy, Michigan to three year terms.

During the Board meeting, held after the elections, the Board voted to office as President, James Armstrong of the J. D. Armstrong Landscape, Fraser, Michigan and Clem Wolfrom, Superintendent, Detroit Golf Club, as Vice President.

# Toxicity Ratings

All pesticides have a toxicity rating.

An acute oral toxicity rating for each insecticide is given and also a dermal toxicity rating if known. Acute oral toxicity ratings are usually obtained by feeding white rats, and acute dermal ratings are determined by skin absorption tests on rats or rabbits. These figures are expressed as LD50. This means the size of the dose which is lethal to 50 per cent of the test animals. LD50 is expressed in terms of milligrams of actual insecticide per kilogram of body weight of the test animal - mg./kg.

To express toxicity in practical terms the factor .003 times the LD50 value will give ounces of actual insecticide required to be lethal to a 187 pound man or other warm-blooded animal. As an example the oral LD50 value for malathion is 1200 mg./kg.; thus, if a group of men each weighing 187 pounds ate 3.6 ounces (1200 times .003) of actual malathion per man, one-half of them would succumb. The dermal toxicity LD50 value of malathion is approximately 4000 mg./kg. or for a 187 pound man, 12 ounces. If you check the list of insecticides you will find some highly toxic chemicals with LD50 values from 1 to 10 mg./kg. For the average man, fatal doses of these would be in the range of .003-.03 ounce.

By comparison the oral LD50 value of aspirin is 1200 mg./kg. or 3.6 ounces per 187 pound man, the equivalent of malathion. The oral LD50 value of ethyl alcohol is 4500 mg./kg. if a group of 187 pound men each consumed somewhat more than 1 quart of 80 proof whiskey in 45 minutes they would not only be intoxicated, 50 per cent of them might die.

It is important to remember that these toxicity ratings of each insecticide listed are approximate and pertain to white rats and sometimes rabbits.

Such ratings do serve as a guide to compare the toxicity of insecticides as well as an indication of their comparative acute toxicity to other warm-blooded animals and man. Acute toxicity ratings expressed as LD50 are classified as to their relative danger when being used. An LD50 of 750 mg./kg. or higher is rated as low toxicity, LD50 rating of 150-750 is moderate, 50-150 is moderately high and 50 or less is very high.



**CONSULTING AGRONOMIST**

**Eugene D. Johanningsmeier**

365 WOODLAND DR.

SOUTH LYON, MICHIGAN 48178

PHONE: 437-1427

## Midwest Turf Foundation Officials

The recent Midwest Regional Turf Foundation at Purdue University attracted over 700 attendants from a multi-state region.

The Midwest Regional Turf Foundation, co-sponsors of the conference along with Purdue University, elected the following officers for 1971:

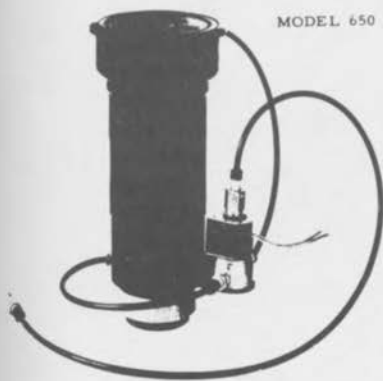
President: John Dunlap, Oarwood Club, Cleveland; Vice President: Louis Miller, Louisville C.C., Louisville, Ky.; Executive Secretary: Dr. W. H. Daniel, Purdue University.

Directors: Our own James Timmerman, Orchard Lake Country Club, Orchard Lake, Michigan; Dudley Smith, Silver Lake Golf Club, Orland Park, Illinois; David Fearis, Mt. Hawley Country Club, Peoria, Illinois.

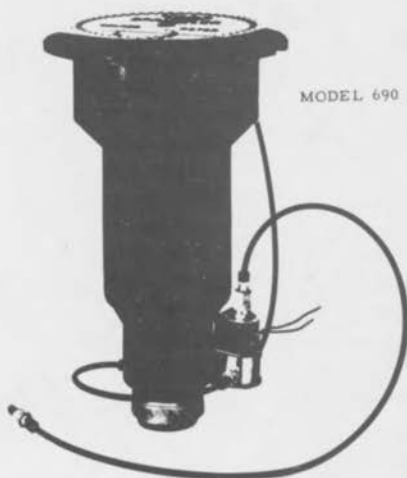


# Toro

THE ENGINEERED METHOD OF MAINTAINING TURF



MODEL 650



MODEL 690

**TORO'S VARI-TIME CONTROL SYSTEM HAS SET THE STANDARD.  
Because Of Better Design It Saves Money Over The Long Haul.**



*Let us help you with design  
and layout service.*

*Write or call (Detroit)  
(313) 353-5300*

***C. E. Anderson Co.***

23455 TELEGRAPH ROAD  
SOUTHFIELD, MICHIGAN 48075



**Control the entire course from  
one location.**

**Make instant changes in your  
program as the weather shifts.  
Save on labor - improve water  
use efficiency.**

# Michigan Turfgrass Foundation

*Is your club a member of the Michigan Turfgrass Foundation?*

Founded in 1956, the purpose of the Foundation is to provide funds for supporting a program of research and education in turfgrass in the State of Michigan. A major goal is to promote and advance the interests of its members as growers of turfgrass as well as those associated industries which are involved in the improvement of turfgrasses and turfgrass management.

Nearly \$100,000 have been provided by the Foundation in research grants. This support has been a major factor in the development of Michigan State University as a productive turfgrass educational and research center. Over 200 clubs, forms, sod interests and individuals have contributed. Periodic research reviews and informational publications are provided to members; approximately nine such mailings have been made during 1970. An annual Turfgrass Conference in January each year at MSU is a source of advanced turfgrass information.

Membership is \$40 per year for 18 or more hole golf clubs and \$25 for courses with nine holes.

If you are not a member, an invitation is extended for 1971. You may use the form below:

(Make checks payable to Michigan Turfgrass Foundation and mail to Michigan Turfgrass Foundation, Department of Crop and Soil Sciences, Michigan State University, East Lansing, Michigan 48823).

## Tentative Dates

APRIL 13

Dominion Golf Club, Windsor, Ont.  
Daniel Uzelac, Superintendent

MAY 4

Grosse Ile  
Jack Lorenz, Superintendent

MAY 24

Plum Hollow  
Ward Swanson, Superintendent

JUNE

Joint Meeting - Northern Ohio  
Highland Meadows Golf Club  
Sylvania, Ohio  
Don Ross, Superintendent

**When you  
work for a company  
like Scotts, you have a  
lot to live up to.**

100 years experience in helping make turf grass greener and healthier, for example. Leadership in the development of seed, fertilizer and control products. ProTurf products for fairways, greens, tees and aprons that cost less to buy, are cheaper to apply, and guarantee satisfaction. And a reputation for solving problems wherever turf grass is grown.



*As your Scotts Technical Representative, I'd like to share Scotts most current turf grass research and development information with you. With this information, perhaps we can work together toward meeting your turf grass objectives.*

**Charles Croley**

715 Washington St. / Lapeer, Mich. 48446  
Phone: 313/664-8266

Date \_\_\_\_\_

Name of Organization \_\_\_\_\_

Person to whom mail should be addressed \_\_\_\_\_

Mailing Address \_\_\_\_\_

City \_\_\_\_\_ State \_\_\_\_\_ Zip \_\_\_\_\_

# Lightning

By Walter J. Wilkie,  
March Irrigation & Supply Company

Lightning is a unique phenomenon that we, in our combined fear and ignorance of it, have tended to ignore; but since it has been estimated that 1,800 lightning storms are in progress over the surface of the earth at any given moment; and because the electrical discharges that are occurring during these storms are known to strike the earth an average of 100 times per second, I'm wondering if we can.

I say this, because I know that lightning is caused by the vigorous movement of the cloud formations where, when the accumulated electrical energy exceeds the insulated strength of the air, it releases the same; and as it does, it sends it crashing to the earth where it's strength is dissipated in a manner that parallels the ending effects of a rising musical crescendo.

We then, in attempting to isolate and define the effects of this tumultuous release of energy, have found that as it strikes the earth it has a sinusoidal pattern that contains from one to 42 electrical impluses, in which the amplitude of the leading impluse has a current carrying capacity that sometimes reaches 100,000 amperes; and that the time between each impluse is usually around 60 millisees (100,000th of a second). All of which means that if we could in some way harness the power reserves contained in just two strokes of lightning, we would have accumulated enough electrical energy to provide for the simultaneous operation of six 100 watt bulbs for a full year.

*The Michigan and Border Cities Golf Course Superintendents Association have extended an invitation to the GCSAA to hold the 1978 International Turfgrass Conference and Show in Detroit. The last time the Convention was held in Detroit was 1948, a long thirty year span.*

Accordingly, if we were to equate all of this to the fact that we know that, in any wiring system, the amplitude of the surge voltage that can be induced into the electrical equipment by lightning is:

1. Directly proportional to the area of the wire loop of the wiring system servicing this equipment.
2. Inversely proportional to the distance of the strike from the wire loop of the wiring system.
3. Directly proportional to the maximum amount of current in the lightning discharge.

We would have to conclude that in the case of an automatic underground sprinkler irrigation system, protection of the control equipment is essential. Thus, the reason, I'm sure, that researchers are attributing more and more of the damage that is being caused to electrical systems to lightning; for as the above shows, lightning can induce the damaging effects of a voltage surge into the wireloop of a wiring system that is more than three miles away from the control equipment it services.

This is why numerous types of lightning protection devices have been developed to give this kind of protection; but since the *Arc Discharge Type* has proven itself to be the most reliable when equated in terms of response time, power handling capacity, ruggedness, cost and ease of maintenance, it's the one we would suggest you use. For here, when a voltage surge of sufficient magnitude occurs between the electrodes, an ionization of the pressurized gap takes place between the same which results in a low resistance and high current carrying path to ground. This then dissipates the excess electrical energy and allows the device to automatically reset after the arc is over; and to again be ready to give you protection from the inevitable - damage caused by lightning.

FREE Sprinkler Supply Brochure

FREE Rate Card for  
Design and Layout Service

FREE Complete **RAIN  BIRD.**  
Catalogue and Price List

**WHOLESALE DISTRIBUTORS**  
for  
**Underground Sprinkler Supplies**  
**Valves - Controls - Pipe - Fittings**

Write or Call:



3890 W. 11 Mile Rd. Berkley, Mich. 48072  
(Detroit) 313-543-7730

## *Meritorious Service Award*

This year's recipient of the Meritorious Service Award, presented by President Frank Forier of the Michigan Turfgrass Foundation, was the late George Priestkom. Accepting the award for his father was his son George Priestkom. Because of the tremendous amount of work done through the early years of the Turf Foundation supporting the first golf outing for raising money and all the work done by George in training the young men in the profession it was a unanimous decision in selecting him for this honor.

George Priestkom's name will join the list of Dr. James Tyson, Charles Chapman, Clarence Wolfrom and Dr. Kenyon Payne as those who have made outstanding contributions in our field.

## **ARE YOU INTERESTED IN JOINING THE MICHIGAN AND BORDER CITIES GOLF COURSE SUPERINTENDENTS ASSOCIATION?**

Fill in the questionnaire below and mail to:

**ALBERT KALTZ**  
**Maple Lane Golf Club**  
**Sterling Heights, Mich. 48077**  
**Phone: Off. 268-2130, Res. 463-2892**

DATE \_\_\_\_\_

NAME OF INTERESTED PERSON \_\_\_\_\_

MAILING ADDRESS \_\_\_\_\_

CITY \_\_\_\_\_ STATE \_\_\_\_\_ ZIP \_\_\_\_\_

**Or you may contact the next golf course supplier that calls on  
you and give him the information needed for application.**



Gerald C. Priestkorn, left, and George W. Priestkorn, right, receiving the "Meritorious Service Award" in honor of their late father, George Priestkorn, Sr. from Mr. Frank Forier, President of the Michigan Turfgrass Foundation.

## AGRICO COUNTRY CLUB FERTILIZERS



### From Tee To Green

- 16-4-12
- 50% Organic
- 12-4-8
- 50% Organic
- 24-0-0
- 100% Organic

### For Tees And Fairways

- 16-8-8 With 1% Iron
- 10-6-4 25% Organic

DISTRIBUTED BY:

### TURF SUPPLIES, INC.

6900 Pardee, Taylor, Tel: 291-1200  
AND

### LAWN EQUIPMENT CORP.

520 W. 11 Mile, Royal Oak, 398-3636

# PROBLEMS

at "Your Patch of Green"?

WILT CONTROL  
FROST REMOVAL  
DEW REMOVAL  
NO WATERMAN  
SHORT ON WATERING TIME  
IRRIGATION RUN-OFF  
NO IRRIGATION FLEXIBILITY

# SOLUTION

## MILLER CENTRAL CONTROLLER

Call 398-2233

For A Mobile Demonstration  
At Your Golf Course

Truly Automatic  
Irrigation  
by

**Miller**  
**Sprinkling**  
**Systems**

ROYAL OAK

398-2233

Since 1925



## Area Members Win National Golf Tournament

Bob Priestkorn, Superintendent of Western Golf Club, won the Seniors Division of the GCSAA Golf Tournament in Phoenix, Arizona. This is the third time in four years that Bob has won this event. This should retire the trophy. Congratulations! Bob wasn't the only winner in Phoenix. Bob Fauteck, Sales Manager of the C. E. Anderson Company won his division of the tournament also. Our team came close, but we needed a few more long putts to win.



Bob Priestkorn

### ***Publications for Turf People***

Publication	Address	Issues/ Year	Yearly Cost*	Description
Golfdom	Golfdom Circulation Dept. 235 E. 45th Street New York, New York 10017	12	\$5**	Golf business to include the professional golfer and golf course superintendents.
The Golf Superintendent	The Golf Superintendent 3158 Des Plaines Avenue Des Plaines, Illinois 60018	10	\$5	Golf Course management and turfgrass science.
Grounds Maintenance	Intertec Publishing Corp. 1014 Wyandotte Street Kansas City, Missouri 64015	12	\$12**	Landscape design, construction and maintenance.
Southern Golf Course Operations	Turfgrass Publications, Inc. P. O. Box 51088 Jacksonville Beach, Fla. 32250	4	\$3	Emphasis on bermudas and other warm season grasses.
Turf Grass Times	Turf-Grass Publications, Inc. P. O. Box 51088 Jacksonville Beach, Fla. 32250	8	\$5	General turf grass industry.
USGA Green Section Record	United States Golf Assn. 40 East 38th Street New York, New York 10016	6	\$2	Golf course construction, maintenance and management.
Weed, Trees & Turf	The Harvest Publishing Co. 9800 Detroit Avenue Cleveland, Ohio 44102 Attention: Circulation Dept.	12	\$7**	Methods, chemicals and equipment for vegetation maintenance and control.

\* Discounts are usually allowed for subscriptions totaling more than one year.

\*\* Complimentary subscriptions are offered certain qualified persons.

# RED RIDER

First in the

70's!



with new ideas for  
turf utility equipment

*Call For Demonstration*  
(313) 398-3636



LAWN EQUIPMENT CORPORATION

520 WEST 11 MILE ROAD  
ROYAL OAK, MICHIGAN 48068

- 8 Horsepower Kohler Engine
- Electric Start Available
- 1000 lb. Weight Capacity on 23 Cubic Foot Model
- 1250 lb. Weight Capacity on 29 Cubic Foot Model

# JACOBSEN.

## GREENS KING

## TRIPLEX GREENS MOWER



# The PROVEN ONE

*W. F. Miller*

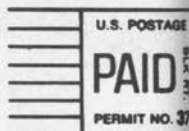
GARDEN AND LAWN EQUIPMENT COMPANY

1593 S. WOODWARD AVE. BIRMINGHAM, MICHIGAN 48011

TELEPHONE: (313) 647-7700

"A Patch of Green"

31823 UTICA ROAD  
FRASER, MICHIGAN 48026



Dr. James B. Beard  
Department of Crop Science  
Michigan State University  
East Lansing, Mich. 48823