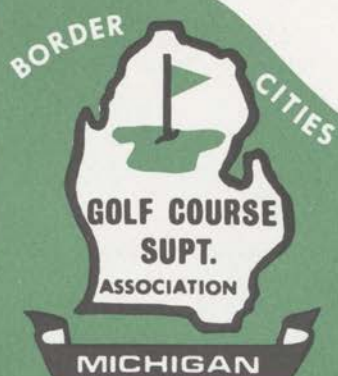


6V  
975  
A1  
P3  
Feb  
1981

FEBRUARY 1981



Michigan State University  
LIBRARY  
MAR 24 1981  
SERIALS

# A PATCH of GREEN

Official Publication of the  
Michigan & Border Cities Golf Course Superintendents Association



**MICHIGAN & BORDER  
CITIES GOLF COURSE  
SUPERINTENDENTS  
ASSOCIATION**

**PRESIDENT**

JAMES TIMMERMAN, CGCS  
ORCHARD LAKE COUNTRY CLUB  
2474 Lafay  
Orchard Lake, Michigan 48033  
Off. 682-2150, Res. 682-7234

**VICE PRESIDENT**

BRUCE WOLFROM, CGCS  
BARTON HILLS COUNTRY CLUB  
435 Stein Road  
Ann Arbor, Michigan 48103  
Off. 662-8359, Res. 663-9213

**SECRETARY-TREASURER**

ED HEINEMAN  
WATERS EDGE COUNTRY CLUB  
10531 Bellevue  
Grosse Ile, Michigan 48138  
Off. 675-0927, Res. 676-3095

**BOARD OF DIRECTORS**

KEVIN DUSHANE  
WABEK COUNTRY CLUB  
159 Willards Way  
Union Lake, Michigan 48085  
Off. 851-1689, Res. 698-2924

MICHAEL EDGERTON  
MEADOWBROOK COUNTRY CLUB  
32736 Hees  
Livonia, Michigan 48150  
Off. 349-3608, Res. 522-6238

CHARLES GAIGE  
LAKELANDS GOLF & COUNTRY CLUB  
7390 Rickett  
Brighton, Michigan 48116  
Off. 231-3003, Res. 227-4617

FRITZ McMULLEN, CGCS  
FOREST LAKE COUNTRY CLUB  
3912 Fieldview  
Orchard Lake, Michigan 48033  
Off. 335-1410, Res. 363-8030

DANIEL UZELAC  
DOMINION GOLF CLUB  
RR No. 1  
Oldcastle, Ontario, Canada NOR 1L0  
Off. 969-4350, Res. 969-4350

THEODORE WOEHRLER  
OAKLAND HILLS COUNTRY CLUB  
3390 Witherbee  
Troy, Michigan 48064  
Off. 644-3352, Res. 649-8512

**PRESIDENT EMERITUS**

CLEM WOLFROM  
DETROIT GOLF CLUB  
530 Kendry  
Bloomfield Hills, Michigan 48013  
Off. 345-4589, Res. 334-0140

**"A PATCH OF GREEN"**

*Published monthly by the*  
**MICHIGAN AND BORDER CITIES GOLF  
COURSE SUPERINTENDENTS ASSOCIATION**

Circulation: 1,250

Ted Woehrle, CGCS, Oakland Hills C.C.  
James Timmerman, Orchard Lakes C.C.  
**CO-EDITORS**

*Printed At*

**BLAKEMAN PRINTING COMPANY**  
31823 Utica Road  
Fraser, Michigan 48026  
Phone: (313) 293-3540

**MONTHLY ADVERTISING RATES**

Double Page Spread.....	\$150.00
Back Outside Page.....	75.00
FullPage.....	65.00
Half Page.....	40.00
Quarter Page.....	30.00
Eighth Page.....	15.00
Sixteenth Page.....	10.00
Classified Ad (per column inch).....	7.50

DISCOUNT RATE: One Year 10%

Note: Advertising fees may not be deducted  
from the above rates.

***This Month's  
Advertisers...***

Golf Car Distributors  
J & J Equipment Co.  
Lakeshore Equipment Corporation  
Lawn Equipment Corporation  
Lebanon/Agrico  
W.F. Miller Garden & Equipment  
Nature's Image Landscaping, Inc.  
Oxford Peat Company  
O.M. Scott & Son, Inc.  
Wm. F. Sell & Son, Inc.  
Sprinkler Irrigation Supply  
Terminal Sales Corporation  
Tire Wholesalers, Inc.  
Turfgrass, Inc.  
Turf Supplies, Inc.  
Wilkie Turf Equipment Division, Inc.  
Charlie Wells & Company

# TURF TRUCKSTER SYSTEM.

Because the flexibility of the Cushman Turf-Care System saves you time and money. Here's how!

The System is built around the rugged, versatile 18 hp Turf-Truckster, 3- or 4-wheel model. With this one power source and options, you can haul, spray, spike, spread and top dress. And

save as much as 35% on equipment in the process.

Because, instead of buying separately powered units for each job, you buy only the Turf-Truckster and the modular Cushman accessories you need. So you pay less in total for equipment... and have only one power unit to maintain.



**CUSHMAN  
TURF-CARE  
EQUIPMENT**

DMC-Lincoln, a Division of  
Outboard Marine Corporation  
6201 Cushman Drive  
P.O. Box 92409  
Lincoln, Nebraska 68501

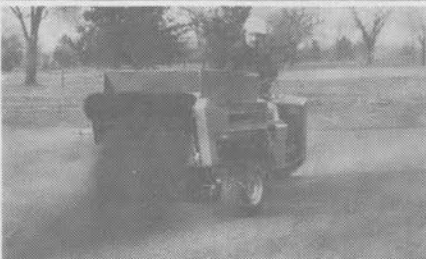
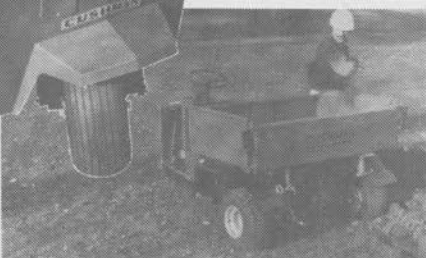
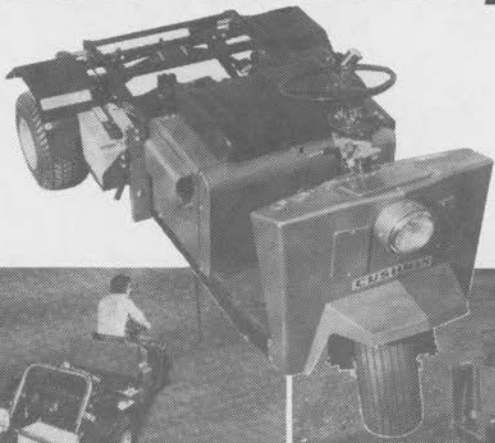
But that's not all.

The System is also a time saver that can cut your labor costs. Accessories mount on the back of the Turf-Truckster. Your men do their work quickly, efficiently... and then move on to the next job at speeds up to 22 mph. There's less wasted traveling time, so you get more work out of each hour of labor cost.

The Cushman Turf-Care System. Versatility, superior performance, economy. It's a tough system to beat.

Write today for your free Cushman Turf Care Catalog.

## You can't beat the system.



**CALL NOW**  
For a demonstration  
and price quotation.  
(313) 338-0425



### GOLF CAR DISTRIBUTORS

1980 W. Wide Track Drive (U.S. 10)  
Pontiac, Michigan 48058  
Phone: (313) 338-0425

## 1980 Was a Good Year for Our Association- A Bad Year for Our Turf

The activities of our Michigan & Border Cities Golf Course Superintendents Association continued to promote the Superintendent and his professionalism. A late winter joint meeting with the Golf Association of Michigan and the USGA - discussed turf problems and their remedies - a University update on the latest research was presented along with the preview of the work to be conducted at the new Hancock Research Laboratory.

As the summer progressed, the Laboratory become a reality. The turf plots were planned and seeded. Several generous donations were made by suppliers - including irrigation equipment - mowing equipment, materials and supplies.

Many Superintendents took time out during their busy schedules to participate in the annual fund raiser in co-

operation with the Michigan Section of the PGA - in harmony with the Fuller Brothers of Bay Pointe Golf Club.

The PGA and our Association shared in the generosity of the Fuller Brothers donation of \$15,000.00. Seventy five hundred dollars went to the PGA junior program and Seventy five hundred dollars was donated to turf research at MSU through our association. Many thanks to the continued support of the Fuller Brothers.

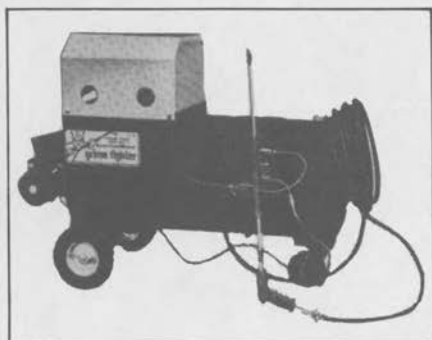
In early October we held our Turf Day Benefit - again at Bay Pointe Golf Club and raised another \$14,130.00. For a total of \$21,630 in the year 1980.

The annual meeting of the association held at Maple Lane Golf Club on Oct. 14, 1980 saw an increase in the Association Dues. Class A - \$33.00

B - 33.00

*Continued on Next Page*

## HIGH PRESSURE WASHERS



CUT YOUR EQUIPMENT CLEANING COSTS IN HALF WITH A HOT/HIGH PRESSURE WASHER. WE HAVE A MODEL TO FIT YOUR NEEDS AND YOUR BUDGET.

FOR A FREE DEMONSTRATION CALL OR WRITE TODAY:

**J & J EQUIPMENT CO.**

17223 Joy • Fraser, Michigan 48026

(313) 293-0675



The three Fuller brothers with the Master of Ceremonies, Ken Adler, on the right.



Jim Fuller (left) presenting President Jim Timmerman (right) a check for \$7500.00 as Jim Fuller looks on.

D - 28.00

F - 55.00

S - 10.00

The election of officers for 1981 produced the following results.

President - James Timmerman

Vice President - Bruce Wolfrom

Secretary/Treasurer - Ed Heineman

Two new Directors:

Dan Uzeloc

Ted Woehrle

Those remaining on the board are:

Kevin Dushane

Michael Edgerton

Charlie Gaige

Fritz McMullen

Clem Wolfrom - Past President

Going off the Board are:

Bob Hope

Chris Myers

Committee Assignments:

Education - Mike Edgerton

Membership - Charlie Gaige

Bylaws - Dan Uzeloc

Golf - Kevin Dushane

Fund Raising - Charlie Gaige

Ted Woehrle

Christmas Party - Kevin Dushane

Mike Edgerton

Publicity & Awards - Bruce

Wolfrom

Finance - Ed Heineman

Editorial - Ted Woehrle

MTF Liaison - Bruce Wolfrom

Historian - Dan Uzeloc

Clem Wolfrom

Police Book - Clem Wolfrom

# PanaSea<sup>TM</sup>

Liquified Sea Plant Extract



PanaSea  
A Product of Natural Science

and  
Technology

A

Multiple-purpose

Turfgrass Supplement

Completely Safe For People,  
Plants, and Animals



- DISTRIBUTED BY -

TURFGRASS, INC.

Phone: Area 313 437-1427

# GCSAA Conference

Eight thousand attended The 52nd International Turfgrass Conference and Show, held at Anaheim, California, January 25-30, 1981.

It was the largest equipment and materials show in the history of the association. The rainy weather kept the audience attending the educational programs all week. Most programs were Standing Room Only. Several sessions in the larger room seemed to be sparse but the concurrent session in the smaller room was overflowing. It seemed to be a matter of selecting the wrong room size for the subject matter. All in all the sessions were better attended than any time in the past.

The opening session was a little weak. Mr. Argue's message on the progress of the 1984 Olympics was interesting but the delivery was poor.

Perhaps the best parts were "The thinking Superintendents" presentation on Monday afternoon and the "Researcher's Challenge" which was outstanding.

Once again the USGA presentations were a little light - but perhaps the room was too large. Over 1000 attended the Thursday session. The highlight of the USGA meeting was the presentation of their Distinguished Service award to Dr. Joseph Duich.

## Dr. Joseph Duich Honored

Dr. Joseph M. Duich, professor of turfgrass science and turfgrass project leader at Pennsylvania State University in University Park, Pennsylvania, has been named the recipient of the 1981 Green Section Award presented by the United States Golf Association in recognition of his distinguished service to golf through work with turfgrass.

Over the years Dr. Duich has significantly contributed to better golf through research, teaching and education. His turf research contributions have been concerned with grass varietal improvement, varietal evaluation, road-

side development, weed control, turf-disease relationships, fertilization and soil modification. Among his breeding contributions are the varieties Pennstar Kentucky bluegrass, Pennfire perennial ryegrass and the Penneagle and Penncross bentgrasses. He tested Penneagle at the Brooktree Municipal Golf Club in Owatonna at the time of its construction in 1976. During the past 22 years Dr. Duich has presented over 150 papers and addresses to national, regional, state and local associations and groups.



## Helping the superintendent through turf research...

- Controlled Release Fertilizers
- Fertilizer/Pesticide Combinations

- Fungicides—Herbicides—Insecticides
- Soil Testing—Weed & Disease Identification

### SCOTTS • LELY • GANDY SPREADERS

Finest quality turfgrass seed—Fairways • Greens • Tees • Roughs  
Scotts Windsor and Victa blends

### Jim Brocklehurst

Technical Representative  
1964 Catalpa  
Berkley, Michigan 48072  
Telephone: 313-547-9632



# PREVIOUS RECIPIENTS OF THE USGA GREEN SECTION AWARD

1961 John Monteith, Jr.  
1962 Lawrence S. Dickinson  
1963 O.J. Noer  
1964 Joseph Valentine  
1965 Glenn W. Burton  
1966 H. Burton Musser  
1967 Elmer J. Michael  
1968 James L. Haines  
1969 Fred V. Grau  
1970 Eberhard R. Steiniger  
1971 Tom Mascaro  
1972 Herb and Joe Graffis  
1973 Dr. Marvin H. Ferguson  
1974 Dr. Howard B. Sprague  
1975 Dr. Fanny-Fern Davis  
1976 Dr. James R. Watson  
1977 Edward J. Casey  
1978 Dr. Jesse De France  
1979 Arthur A. Snyder  
1980 Dr. C. Reed Funk

Don't be afraid to take a big step if one  
is indicated. You can't cross a chasm  
in two small jumps.

DAVID LLOYD GEORGE

# TREE CLEARANCE

**NATURE'S IMAGE  
LANDSCAPING INC.**

OVER 2,000 SPECIMEN TREES!

2½ - 3" B & B/28"	\$122.00
3 - 3½" B & B/32"	142.00
3½ - 4" B & B/36"	162.00
4 - 4½" B & B/40"	193.00
4½ - 5" B & B/50"	233.00

Delivery & Planting available  
20 varieties to choose from  
Hundreds of Pine & Spruce  
Contract tree digging by machine  
or hand dug - ANY size tree  
References available upon request



**TREE SUPPLY &  
TRANSPLANTING**  
"Visit our 5 acre farm!"  
**528-0440**

4210 ROCHESTER RD. • TROY • 1 BLOCK N. of WATTLIS

# ARE YOU INTERESTED IN JOINING THE MICHIGAN AND BORDER CITIES GOLF COURSE SUPERINTENDENTS ASSOCIATION?

FILL IN THE QUESTIONNAIRE BELOW AND MAIL TO:



CHARLES GAIGE  
LAKELANDS GOLF & COUNTRY CLUB  
7390 Rickett  
Brighton, MI 48116  
Office 231-3003, Residence 227-4617



DATE \_\_\_\_\_

NAME \_\_\_\_\_

ADDRESS \_\_\_\_\_

CITY \_\_\_\_\_ STATE \_\_\_\_\_ ZIP \_\_\_\_\_

OR YOU MAY CONTACT THE NEXT GOLF COURSE SUPPLIER WHO CALL ON  
YOU AND GIVE HIM THE INFORMATION NEEDED FOR APPLICATION.



Gary L. Pulsipher (left) and Michael G. Schaefer (right) were co-recipients of the 1981 Norman Kramer Outstanding Scholar Award of the Michigan Turfgrass Foundation. The awards are being presented by Roger Barton (center), Director of the M.T.F., at the 51st Annual Michigan Turfgrass Foundation Conference at Michigan State University on January 13, 1981.

W. Bruce Matthews of Grand Haven, Michigan (right) is the recipient of the 1981 Meritorious Service Award of the Michigan Turfgrass Foundation. Presenting the award is C. E. "Tuck" Tate, President of the M.T.F. (left) at the 51st Annual Michigan Turfgrass Conference at Michigan State University on January 13, 1981.



***No synthetically produced fertilizer can compare with  
MILORGANITE***

Golf Courses Use More

**MILORGANITE**

Than Any Other Fertilizer



**TERMINAL SALES CORP.**

12871 EATON AVE.  
DETROIT, MICH. 48227  
(313) 491-0606



# 6 ANSWERS TO QUESTIONS WE NEVER THOUGHT YOU'D ASK (BUT DECIDED TO ANSWER ANYWAY)

**1** Yes, GCSAA can help you become a better superintendent. One way it does this is through educational seminars and conference sessions it sponsors each year to help you become better informed about turfgrass diseases, pesticides, landscaping and management practices.

**2** Yes, GCSAA is helping to further the advancement of the turfgrass industry. Through the GCSAA Scholarship & Research Fund, Inc., GCSAA provided more than \$13,500 last year in research grants to leading turfgrass programs. GCSAA also provides educational opportunities to turfgrass students through annual turfgrass scholarships.

**4** Yes, GCSAA offers recognition for superintendents. Through its public relations efforts, its magazine, and its award programs, GCSAA helps promote the image and the professionalism of the superintendent. GCSAA also provides information to superintendents about how they can use public relations to promote their own image to their course, their community and their association.

**3** Yes, GCSAA provides a meeting ground for superintendents. Each year, GCSAA sponsors an annual conference and show for its members. Last year more than 6,500 educators, industry representatives and members from all over the world attended. GCSAA's executive committee decided at its last board meeting that the conference experience is so valuable that first-year members should be encouraged to attend by being given free admission.

**5** Yes, GCSAA provides each member with a life insurance program. Supplemental insurance, disability and pension programs also are available.

**6** No, GCSAA can't help you with your golf handicap. You'll have to work on that yourself.



## GCSAA

The association that offers you  
more than just a name.

1617 ST. ANDREWS DRIVE • LAWRENCE, KANSAS 66044  
913 / 841-2240



**TORO**

worth more

**GREENSMASTER 3<sup>®</sup>**

**Still the leader...  
...outsells competition two to one.**

**Features like: Thatching Reels**

**Powered spikers**

**Variable Quick Height of Cut**

**Unit Interchangeability**

**Backed by The Toro Promise – and  
Wilkie Turf Equipment Company**



**WILKIE**

*Turf Equipment Division, Inc.*

1050 OPDYKE ROAD PONTIAC, MICHIGAN 48057

(313) 373-8800

**TORO**



The 1981 Outstanding Student Award of the Michigan Turfgrass Foundation is presented to Brad D. Emerick (right), Two-year student in Turfgrass Management at Michigan State University at the 51st Annual Michigan Turfgrass Conference, January 13, 1981. The award is being presented by Bruce Wolf from .

## Need Golf Course Equipment?

### FOLLOW THESE INSTRUCTIONS:

1. Phone (313) 482-4210
2. Ask for Charlie Wells
3. Tell him what you want – "If he doesn't have it, he'll get it."
4. Choose as you please
  - a. He will restore yours
  - b. He will repair yours
  - c. He will follow your instructions
  - d. He will guarantee his work – "If he can't fix it, Throw it away."
5. Tell your friends to buy "WELLS BUILT."

**CHARLIE WELLS & COMPANY**

# GOLF

---



OLF is a science, the study of a life-time, in which you may exhaust yourself but never your subject. It is a contest, a duel, or a melee, calling for courage, skill, strategy and self-control. It is a test of temper, a trial of honour, a revealer of character. It affords a chance to play the man and act the gentleman. It means going into God's out-of-doors, getting close to nature, fresh air, exercise, a recreation of tired tissues. It is a cure for care, an antidote to worry. It includes companionship with friends, social intercourse, opportunities for courtesy, kindness and generosity to an opponent. It promotes not only physical health but moral force.

-----  
D. R. FORGAN

— With Compliments of —  
ROBT. FORGAN & SON, LTD., ST. ANDREWS, SCOTLAND  
The Leading Golf Club Makers for over a Century & a Quarter

**MICHAEL R. BAVIER, CGCS,  
ELECTED 1981 PRESIDENT  
IN GCSAA ANNUAL MEETING IN  
ANAHEIM**

Anaheim, Calif. — Michael R. Bavier, CGCS, superintendent of Inverness Golf Club, Palatine, Ill., was elected President of the Golf Course Superintendents Association of America at the annual membership meeting held January 28, 1981.

Also elected were James A. Wyllie, Bayview Country Club, Thornhill, Ontario, Canada, Vice President; Eugene D. Baston, CGCS, Birmingham (Ala.) Country Club, Director, and Riley Lee Stottern, CGCS, Jeremy Ranch Country Club, Salt Lake City, Utah. The election was in conjunction with GCSAA's 52nd International Turfgrass Conference and Show in the Anaheim Convention Center.

The new officers join Directors Paul Boizelle, CGCS, Fiddlers Elbow Country Club, Far Hills, N.J.; Edward Dembnicki, Arcadian Shores Golf Course, Myrtle Beach, S.C.; Robert W. Osterman, CGCS, Connecticut Golf Club, Easton, Conn., and James W. Timmerman, CGCS, Orchard Lake (Mich.) Country Club. Outgoing President Melvin B. Lucas, Jr., CGCS, Piping Rock Club, Long Island, N.Y., also will serve on the association's Board of Directors for an additional year.

The association's annual conference and show, which included the membership meeting and election drew a record attendance of more than 8,000 for its five-day run in the Anaheim Convention Center. GCSAA, with a total membership of almost 5,000, is headquartered in Lawrence, Kan.

**NEW CHAPTER NEWSLETTER  
FOR WESTERN MICHIGAN**

The Western Michigan Chapter Golf Course Superintendents has been producing their own Newsletter since last Fall. They call it "Western Views". The editor is located at 3295 Old Hickory Trail #141 Dewitt, Michigan 48820.

The Chairman is Kurt Thuemmel of Walnut Hills C.C. We wish them Luck.

If you have changed your address, please let us know so we can keep our addressing plates up to date.

**Present Address:**

NAME

ADDRESS

CITY

STATE

ZIP

**Fill In New Address:**

NAME

ADDRESS

CITY

STATE

ZIP

Mail this form to:

**A PATCH OF GREEN**

31823 Utica Road  
Fraser, Michigan 48026

**TURF SUPPLIES INC.**

6900 Pardee Rd., Taylor, Michigan  
(313) 291-1200

DON'T EVEN THINK  
OF BUYING . . . . .

**GRASS SEED  
FERTILIZERS  
FUNGICIDES**

WITHOUT CALLING

**291-1200**

**TURF SUPPLIES INC.**

6900 Pardee Rd., Taylor, Michigan  
(313) 291-1200

## INSECT IDENTIFICATION AND CONTROL SEMINAR

Of the millions of species of insects found on earth, only a few are harmful, and many of those are only damaging in special situations. However, the few species which are harmful account for an incredible amount of damage each year.

In fine turf, like that found on golf courses, insect damage is frequently not apparent until it has reached an advanced stage. When this happens, the turf is sometimes damaged beyond repair. Therefore, an accurate diagnosis and prompt, correct action are of the utmost importance.

GCSAA's Insect Identification and Control Seminar can help. In this two-day seminar, you can learn not only how to identify insects commonly found on golf courses, but also how to deal with them.

The first part of the seminar will concentrate on the descriptions, life cycles, symptoms and methods of control of different kinds of insects, including root feeders, foliage feeders and those which damage the plant by piercing or sucking.

You'll also learn to select and use the proper insecticide and the way it will affect the insect's system and the golf course environment.

This valuable knowledge is vital to every golf course superintendent. GCSAA's Insect Identification and Control Seminar offers you information you can use every day on your own course. You can't afford to miss it.

## INSECT IDENTIFICATION AND CONTROL SEMINAR

*Insect Characteristics*

*Recognition of Symptoms*

*Population Control Factors*

*Selection of Insecticides*

*Environmental Factors*

For more information contact GCSAA Headquarters, 1617 St. Andrews Dr., Lawrence, KS 66044 or call (913)841-2240.

# HOLE!



Whether you want to plant a tree, dig a fence-post hole or bore a quick, clean hole in the ground for any reason, Kubota posthole diggers do it now.

AS LOW AS **\$437.00**

**A FULL LINE OF  
MID-RANGE DIESEL  
TRACTORS AND IMPLEMENTS**

**KUBOTA®**

Test drive a Kubota Diesel Tractor now at:

**WM. F. SELL & SON, INC.**

16555 TELEGRAPH ROAD  
TAYLOR, MICHIGAN 48180  
Telephone: 313/282-5100

*"For Land's Sake 'Use Peat'"*



**OXFORD PEAT CO.**

1430 E. Drahner Rd.  
Oxford, Michigan 48051

**PROCESSED PEAT**  
Bulk or Bag  
Custom Blending

**FRED LATTA**

313/628-5991

## LAKE SHORE

EQUIPMENT & SUPPLY CO.

HOME OF

**LESCO® PRODUCTS**

And

**SULFUR COATED FERTILIZERS**

Distributor & Formulator

**GRASS SEED, FERTILIZERS**

**INSECTICIDES FUNGICIDES, HERBICIDES**

*Call Us Today*

**TOLL FREE**

**1-800-321-5325**

300 S. Abbe Rd. Elyria, Ohio 44035

Price Quotation On Request

(216) 323-7544



## GRASS DOES NOT LIVE BY NITROGEN ALONE!

OR PHOSPHATE  
OR POTASH



Yes, it takes a balance of all nutrients to grow good turf. Country Club products provide total nutrient feeding. Look to Country Club for all your fertilizer and combination fertilizer-pesticide products. You can rely on Country Club turf products for satisfaction and results.

For more information, call 1-800-637-2101 (217-446-0983 in Illinois)

### LEBANON CHEMICAL CORPORATION

P.O. Box 647  
Danville, IL 61832

P.O. Box 180  
Lebanon, PA 17042

## FOR SALE

1977 Yazoo 48" 16h.p. B.S.  
\$700.00

1970 Cushman Truckster 4wh. 18h.p.  
\$750.00

1969 Giant Vac Double Blower 12h.p. B.S.  
\$600.00

Lely - Fertilizer Spreader-wheel drive  
\$350.00

CALL MARTY AT KNOLLWOOD  
(313) 855-9716

ROGERS SEEDER - GOOD CONDITION  
CALL KEVIN AT WABEEK -  
(313) 851-1689

## BEWARE THE DEADLY BEE

What venomous animal causes more fatalities than any other? According to Dr. Ted Brook, it's not a rattlesnake or some incredibly deadly variety of spider—it's the common, everyday bee.

Brook, writing in the Mississippi Turfgrass Association newsletter, says that bees, wasps, hornets, yellow jackets and ants are insects that can cause discomfort or allergic reactions by their stings. For most people, the reaction to the injection of venom into the skin is more often uncomfortable than deadly. However, a sizeable number of people are very allergic to bee and wasp venom, and the reaction can sometimes be fatal.

Brook recommends that if you are stung by an insect, capture it for identification, if possible, especially if you don't know if you have an allergy. If a reaction, such as swelling, fainting, hives, nausea or shock, develops get immediate medical help from a doctor or hospital. If you are allergic, be sure to carry identification, such as a medic alert bracelet or tags and a wallet card.

In a golf course operation, you should instruct your workers to report the location of nests so that they can be removed. You should also be aware if any of your employees are known to have an allergic reaction to insect stings and instruct them in the proper procedures to follow in case they are nearby when a golfer is stung.

## SNOW & ICE MAY BE A PROBLEM

The heavy snow cover since Christmas eve seemed to be the ideal protection needed for a good winter until the rains of late January and mid February. There now seems to be a three inch layer of clear ice under the snow.

Several Superintendents are attempting to remove the snow from the greens and tees so they can melt the ice.

We usually have a thirty day time period before we become concerned. This means that if there is still ice on March 1st we can expect some ice sheet damage. Let's hope that Mother Nature is kind to us and melts the ice for us.

## Tire Wholesalers Company, Inc.

19240 West Eight Mile Southfield, Mich. 48075  
(1/2 Mile West of Southfield Road)

Phone: (313) 354-5644

MICHELIN

TRUCK-CAR  
TRAILER  
MOTORCYCLE  
INDUSTRIAL  
TIRES

jtW

UNIROYAL

GOODYEAR

WHOLESALE PRICES TO COMMERCIAL ACCOUNTS



Dr. J. M. Vargas (right), Associate Professor at Michigan State University, accepts a turfgrass research grant from the O. J. Noer Foundation from Frank Forier (left), Member of the Board of Directors of the Foundation at the 51st Annual Michigan Turfgrass Conference at East Lansing, Michigan — January 13, 1981.



Ernest Fuller (left) is presented a plaque in recognition of the outstanding support he and his brothers have provided for turfgrass research at Michigan State University. The award is being presented by Dr. J. M. Vargas (right), Associate Professor at M.S.U. on behalf of the Michigan Turfgrass Foundation at the 51st Annual Michigan Turfgrass Conference, East Lansing, Michigan — January 13, 1981.



The 1981 Burt Bradshaw Award is being presented to the Outstanding Four-year Student in Turfgrass Management at the 51st Annual Michigan Turfgrass Conference. The recipient is Michael McElroy (center) and Burt Bradshaw (left) and Gordon La Fontaine (right) of Lawn Equipment Corporation, Novi, Michigan are presenting the award.



"Oh, Fudge!"



# Turf Topics

## Precision Controllers With Unmatched Flexibility.

J-M Buckner is first in the industry to offer you solid-state microelectronics in an irrigation controller. Our KCS line of controllers are as easy to operate as pocket calculators. KCS offers unmatched flexibility with 12 or 24 individual circuits and four 14-day schedules... all with timing accuracy down to a fraction of a second. The KCS totals daily watering time, allows skipping up to nine days, has both automatic and manual syringe cycles for services such as dew removal and many more unique features. Operation is simple, fast and accurate.



NOW is the time to consider converting existing quick coupling valves or manual systems to automatic -- with J-M/Buckner, solid state KCS automatic equipment and new automatic valves and sprinkler heads.

You may do it yourself -- or check with Jim Vince on design and installation.

Write or call direct



Sprinkler Irrigation Supply Co. A division of A.J. Miller Inc.  
1316 No. Campbell Rd. Royal Oak, Mi. 48067 Phone (313) 398-2233  
Chicago Sales Office/Warehouse  
1115 Republic Drive, Addison, IL 60101 (313) 543-5330

## USGA - IMPORTANT NOTICE -

Once again this spring the Green Section will be hosting a series of Regional Meetings across the country. These meetings are designed to present information of current interest and importance for all those committed to the development and maintenance of better golf courses.

Two of these meetings are scheduled for the Midwest.

North Central Region  
Tuesday, March 24, 1981  
O'Hare Marriott Inn  
Kennedy Expressway at  
Cumberland Ave.  
Chicago, Illinois

ALSO:  
Thursday, March 26, 1981  
Holiday Inn - North  
2235 Sharon Road  
Cincinnati, Ohio

For more information regarding subject material to be presented or information on room availability - Call Ted Woehrle 313-644-3352

This is a must for you and your Green Chairman - Don't miss it!

## HOSPITALITY ROOM

A nice large well equipped Hospitality Room greeted us at the Disneyland Hotel complex. It never seemed too busy but there was always someone present enjoying the fine Michigan Hospitality. A great place to meet friends before dinner and a place to rest your weary feet. Many thanks to all those that contributed to its success. Especially Kevin Dushane and his wife Mary for organizing and stocking the room with supplies.

The Wednesday Annual meeting had the following results - Mike Bavier Elected President

Congratulations to our new G.C.S.A.A. president, Mike Bavier, C.G.C.S. Supt. at Inverness Country Club, Palatine, Illinois.

It's a rare supervisor who has not at one time or another voiced the complaint: "These people don't need a boss, they need a referee!"

# HOWARD

## COMMERCIAL TURF EQUIPMENT



### COMMERCIAL 60" MOWER

The Howard 60" Commercial Mower with forward mounted cutting head affords maximum visibility, non-tracking performance and unparalleled trimming capabilities around and under bushes, chains, guard rails, picnic tables, etc. By having your cutting head out in front, independently attached, you can actually see the mower following the contour of the

ground, not the tractor. The Howard Commercial Mower with hydrostatic transmission enables you to set your cutting speed to an infinite range, between the speeds of 0 and 6.2 M.P.H., depending on your mowing conditions. The heavy duty transmission and differential allows for a responsive, yet smooth, operating forward and reverse action in open or congested areas. The transmission is backed by the strongest warranty in the field. The outstanding versatility of our tractor is evidenced by the attachments which are available. The attachments are quick change and may be run off our live P.T.O.



#### LAWN EQUIPMENT CORPORATION

46845 W. 12 MILE ROAD      NOVI, MICH. 48050

P.O. BOX 500      (313) 348-8110

JACOBSEN  
**UV4**

the articulated, 4-wheel drive  
truck that goes everywhere  
**4-WHEEL DRIVE TRUCK**



Powered by a 16 HP engine, the UV4 features a rugged torque converter transmission with 2 forward speeds, plus reverse, along with powerful hydraulic brakes. The box handles items 5 feet long and 4 feet wide. The tailgate hinges at the top and bottom for your choice of loading and dumping (dumping is done hydraulically with the flip of a lever).

Test drive the UV4 for yourself. Have W.F. Miller arrange a demonstration on your obstacle course. And have 2000 pounds of something handy to take along for the ride. Four 500-pound canaries ought to do it.

**W.F. Miller** Garden & Lawn  
Equipment Company

1593 S. WOODWARD AVE. BIRMINGHAM, MICHIGAN 48011  
TELEPHONE: (313) 647-7700

**"A Patch of Green"**  
31823 UTICA ROAD  
FRASER, MICHIGAN 48026



MICHIGAN STATE UNIVERSITY  
LIBRARY - SERIALS  
EAST LANSING, MICH. 48823

