

NOVEMBER 1984



# A PATCH of GREEN



Official Publication of the  
Michigan & Border Cities Golf Course Superintendents Association



**MICHIGAN & BORDER  
CITIES GOLF COURSE  
SUPERINTENDENTS  
ASSOCIATION**

**PRESIDENT**

**MICHAEL EDGERTON**  
Meadowbrook Country Club  
3066 Sesame  
Howell, Michigan 48843  
Off. 349-3608 - Res. (517) 546-5927

**VICE PRESIDENT**

**KEVIN DUSHANE, CGCS**  
Bloomfield Hills Country Club  
159 Willards Way  
Union Lake, Michigan 48085  
Off. 642-0707 - Res. 698-2924

**SECRETARY-TREASURER**

**THOMAS MASON, JR.**  
Birmingham Country Club  
3640 Oriole Rd.  
Troy, Michigan 48064  
Off. 644-6320 - Res. 362-3201

**BOARD OF DIRECTORS**

**CLEM WOLFROM**  
Detroit Golf Club  
530 Kendry  
Bloomfield Hills, Michigan 48013  
Off. 345-4589 - Res. 334-0140

**KEN DEBUSSCHER**  
Wabek Country Club  
33128 Richard O. Drive  
Sterling Heights, Michigan 48077  
Off. 851-1689 - Res. 268-4423

**CHARLES GAIGE**  
Lakelands Golf & Country Club  
7390 Rickett  
Brighton, Michigan 48116  
Off. 231-3003 - Res. 227-4617

**CRAIG ROGGE MAN**  
St. Clair Shores Country Club  
22185 Masonic Blvd.  
St. Clair Shores, Michigan 48082  
Off. 294-6170 - Res. 774-1394

**DANIEL UZELAC**  
Dominion Golf Club  
RR No. 1  
Oldcastle, Ontario, Canada NOR 1L0  
Off. (519) 969-4350 - Res. (519) 969-4350

**ED HEINEMAN, C.G.C.S.**  
Waters Edge Country Club  
10531 Bellevue  
Grosse Ile, Michigan 48138  
Off. 675-0927 - Res. 753-4188

**PRESIDENT EMERITUS**

**BRUCE WOLFROM, CGCS**  
Barton Hills Country Club  
435 Stein Road  
Ann Arbor, Michigan 48103  
Off. 662-8359 - Res. 663-9213

**"A PATCH OF GREEN"**

*Published monthly by the*  
**MICHIGAN AND BORDER CITIES GOLF  
COURSE SUPERINTENDENTS ASSOCIATION**

Circulation: 1,250

**Ted Woehrlé, CGCS, Oakland Hills C.C.**  
**EDITOR**

*Printed At*

**BLAKEMAN PRINTING COMPANY**  
31823 Utica Road  
Fraser, Michigan 48026  
Phone: (313) 293-3540

**MONTHLY ADVERTISING RATES**

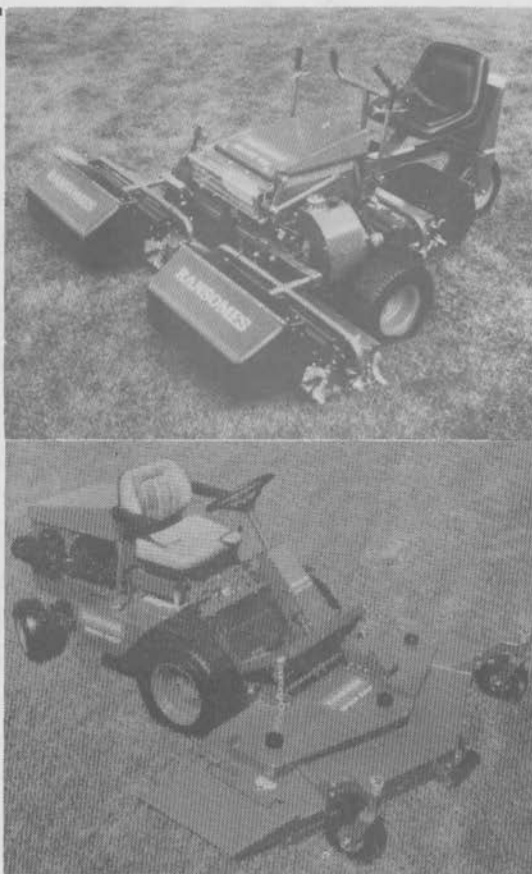
Double Page Spread.....	\$150.00
Back Outside Page.....	75.00
Full Page.....	65.00
Half Page.....	40.00
Quarter Page.....	30.00
Eighth Page.....	15.00
Sixteenth Page.....	10.00
Classified Ad (per column inch).....	7.50

DISCOUNT RATE: One Year 10%

Note: Advertising fees may not be deducted  
from the above rates.

***This Month's  
Advertisers...***

Allingham Corporation  
Armstrong Lawn & Tree  
Century Rain-Aid  
D & C Sales  
Hi Teck Enterprises  
Ideal Mower Sales  
Lawn Equipment Corporation  
Lesco, Inc.  
W. F. Miller Garden & Equipment  
Oxford Peat Company  
Rhône-Poulenc  
Wm. F. Sell & Sons, Inc.  
Tire Wholesalers, Inc.  
Turfgrass, Inc.  
USS Agri-Chemicals  
Shemin Nurseries, Inc.  
Wilkie Turf Equipment Division, Inc.



RANSOMES  
**BOB-CAT®**

**The grass machine.**



**MOWER SALES, INC.**

FOR A DEMONSTRATION  
ON YOUR TURF, CALL  
ED STESNEY, TURF MANAGER.

811 WOODWARD HTS., FERNDALE, MI 48220  
(313) 541-4200 (313) 541-4660



# GCSAA NEWS

Former President of the United States Gerald R. Ford will receive the Old Tom Morris Award from the Golf Course Superintendents Association of America (GCSAA). Ford is the 1985 recipient of this significant international award that is identified throughout the golfing world with the true heritage and traditional founding of the game.

"The award is presented to an individual who, through a continuing, selfless commitment to the game of golf, has helped to further the welfare of the game with the same dedication and zeal demonstrated by Old Tom Morris," said James W. Timmerman, CGCS, President of GCSAA.

Ford brought international attention to this popular leisure time activity while serving as President of the United States. His golf outings have been portrayed both positively and frequently by the press. Ford is renowned as a man of integrity, and his associa-



tion with the game of golf only results in further enhancing golf's attributes of honor and sportsmanship in the eyes of the world.

During his term in the White House, he clearly expressed his love for golf and his respect for the golf course superintendent. In a 1976 letter to GCSAA, President Ford explained, "Countless numbers of Americans derive pleasure, relaxation and exercise on our nation's golf courses. Evidence of the sport's growing popularity is seen from the increasing numbers who play it, from the rising sales of golf equipment, and from the media attention given to its major events. Holding a fascination for players of all levels and every social background, golf has become an important part of our national life.

"Much of the credit for this goes to you whose dedication and concern for perfection have made our courses into beautiful and reliable playing areas. The imagination and energy you bring

CONTINUED ON PAGE 13

**LESCO**...

**for all your golf course needs.**

- Lescosan\*
- Sulfur-Coated Fertilizers
- Chemicals
- Seed
- Equipment
- Accessories

\*Betasan — A registered trademark of Stauffer Chemical Company.

**LESCO Inc.**

(800)  
321-5325  
Nationwide

20005 Lake Road  
Rocky River, Ohio 44116

(800)  
362-7413  
In Ohio

## Hi TECK Enterprises

**LANDSCAPE CONTRACTOR**

**Mechanical Tree Transplanters**

Moving Trees up to  
14" Trunk Diameter

CALL FOR ESTIMATE

**(313) 229-4657**

GOOSEGRASS OR CRABGRASS?

# CONTROL BOTH WITH RONSTAR.<sup>®</sup>

HERBICIDE

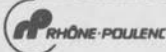


It's hard to tell the difference between goosegrass and late-germinating crabgrass.

But if you treat your turf with Chipco<sup>®</sup> RONSTAR<sup>®</sup> G herbicide, it makes no difference.

RONSTAR gives excellent control of both, season-long... and it's convenient to use, because there's no leaching problem, no root pruning, and no problems with ornamental plantings.

So, for the best control of grassy weeds, use RONSTAR. Rhône-Poulenc Inc., Agrochemical Division, Monmouth Junction, NJ 08852.



**RONSTAR<sup>®</sup>**  
**SPREAD THE WORD.**

Please read label carefully, and use only as directed.

# CSSA Elects Beard



Dr. James B Beard of College Station was voted President-Elect of the Crop Science Society of America. A charter member of the organization, he previously served on the CSSA Board of

Directors. The Crop Science Society of America as a membership of over 5,500 researchers and educators working in the areas of crop genetics, physiology, culture, seed technology, and crop utilization.

Beard earned a Bachelor of Science degree at Ohio State University and both Master of Science and Doctoral degrees at Purdue University. He is a Professor in the Department of Soil & Crop Sciences, Texas A&M University, where he holds a joint research-teaching appointment in the Texas Agricultural Experiment Station and the College of Agriculture, parts of the Texas A&M University System. Beard heads a major turfgrass research and teaching program with emphasis on environmental stress physiology and allied cultural practices. He is the author of five books in the turfgrass field. Dr. Beard formerly was a member of the Department of Crop and Soil Sciences at Michigan State University.



**ALLINGHAM**  
CORPORATION DETROIT



"A CRANE AND COMPRESSOR RENTAL SERVICE COMPANY"

**Water lines must be blown out before  
freeze-ups cause extensive repairs.  
For portable air compressor rental call . . .**

**(313) 444-8850**

**150 cfm — 1600 cfm MACHINES AVAILABLE**

**CALL ANYTIME —  
24 HRS. DAY OR NIGHT**

**21250 W. 8 MILE RD.  
SOUTHFIELD, MI 48075**

# SAVE

## ON GUARANTEED REPLACEMENT PARTS

LOW PRICES

### TO FIT

TORO  
RYAN  
MOTT  
EXCEL

JACOBSEN  
ROSEMAN  
ROGERS  
OLATHE

HAHN-WESTPOINT  
PAR AIDE  
JOHN DEERE  
NATIONAL

CUSHMAN  
RANSOMES  
FORD  
YAZOO

### NEW PARTS



**GOODYEAR**

\*BELTS \*TIRES  
\*GREENSAIRE PARTS  
\*REELS \*BEARINGS  
\*STEERING CABLES  
AND MORE



IN MICHIGAN CALL TOLL FREE - 1-800 824-8769



Replacement Rotary Blades

YOUR DEALER IS:

**Itc**  
AND

**SALES**

2301 Charms Road

Wixom Mi 48096

PHONE 313 684-0688



# HISTORY OF THE HOLE CUP

by Brad Earl Anderson, Asst. Supt.  
Old Elm Club, Highwood, Illinois

"Golf means the long and leary putt that glides into the cup." Robert K. Risk, *Songs of the Links*. 1919 Golf historians believe that the first hole cup was a common length of land tile which golfers at St. Andrews placed in the holes of their greens. Legend has it that they were distressed over the constant degradation suffered of the hole and its rim, and that perhaps the land tile may have helped to control the problem. Apart from environmental wear of the hole, the golfer himself was largely responsible for degradation; for what with the wooden tee not yet in existence, the golfer would - upon holeing out - grab a handful of soil from the hole for shaping into a tee for his proceeding tee shot. Mid-

nineteenth century photos of golfers on putting greens show that very often the hole was ragged, and in some cases at least one foot wide!

Some clubs had their own rules against "robbing the hole of soil" as it were. The 1815 rules of Aberdeen stated that . . . "No sand is to be taken for teeing within ten yards of the hole", and the 1834 rules of the Royal Musselburgh Club stated that . . . "The turf of the putting green shall not be raised up for a tee, and no caddy shall be employed who does not carry a bag of moist sand or clay for tees."

The legendary St. Andrews land tile/hole cup was in use as early as 1850. Its dimensions were 5½

CONTINUED ON PAGE 14

## With 27 field-proven formulas we may have more solutions than you have problems.

Distributed by:

### LAWN EQUIPMENT CORPORATION

46845 W. 12 MILE ROAD NOVI, MICH. 48050

P.O. BOX 500 (313) 348-8110

SERVING ALL OF MICHIGAN!

the professional's  
partner™

**The Andersons**

Lawn Fertilizer Division  
P.O. Box 119  
Maumee, Ohio 43537

Ohio:  
800-472-3220

Outside Ohio:  
800-537-3870



"Super  
course,  
eh, Jim"

"Yes, P.J. . . .  
and Super  
Superintendent,  
of course!"



GOLF COURSE SUPERINTENDENTS ASSOCIATION OF AMERICA  
1617 ST. ANDREWS DRIVE / LAWRENCE, KANSAS 66044 / A. C. 913 841-2240

# TREE TRANSPLANTING

LARGE TREES UP TO 11" DIAMETER

**ARMSTRONG**

*LAWN AND TREE, INC.*



"Your Evergreens should be moved now."

44275 Whithorn  
Sterling Heights, Michigan 48078

731-5550  
264-8803  
Home: 731-2148

**TORO**

worth more

**GROUNDMASTER 72®**

**Durability, versatility and  
top performance features make the  
Groundmaster 72® worth more.**

The optional Two-stage 48-inch Snowthrower with driftbreaker auger clears snow from sidewalks in a hurry. Oversized Second Stage prevents clogging, Electric Chute Rotator puts snow where you want it.

**WILKIE****Turf Equipment Division, Inc.****TORO**

1050 OPDYKE ROAD P.O. BOX 749 PONTIAC, MICHIGAN 48056  
(313) 373-8800

# 670 SERIES ROTARY SPRINKLER

# TORO®

IRRIGATION DIVISION



**NORMALLY OPEN  
VALVE-IN-HEAD**



**CHECKOMATIC**



**24 V.A.C. ELECTRIC  
VALVE-IN-HEAD**



**NORMALLY CLOSED  
VALVE-IN-HEAD**

## SPECIAL FEATURES

### Positive Spring Retraction

Minimizes tampering and accidents by pulling nozzle and cap down out of the way of people and mowers when watering is done. Strong spring discourages vandals.

### Rugged Cyclocac® Case

Almost indestructible engineering plastic has tremendous impact resistance, won't rust, corrode or disintegrate because of time or water-carried minerals.

### Long-Life Gear Drive

Rotation drive gears are vacuum-packed with grease and isolated from water stream for long, trouble-free life.

### Valve-In-Head Models

All the advantages of head-by-head control at a much lower cost than valve-under-head installations. Customize watering to fit turf use, topography and soil.

Multi-cycle for wind or runoff problems, frost control, dew removal without low-head drainage. Available for hydraulic normally open, hydraulic normally closed or 24-volt electric systems. Valve accessible through top of head.

### Checkomatic Models

Stops low-head drainage in block systems with spring-loaded check valve in base of sprinkler.

### Manual Override

Allows normally closed and electric valve-in-head models to be turned on manually or be cancelled out of automatic program.

### Pressure Regulation

For more equal water distribution over large areas. Compensates for large pressure differentials. Regulates pressure to nozzles on normally closed and electric valve-in-head models.



**WILKIE**

**Turf Equipment Division, Inc.**

# TORO

1050 OPDYKE ROAD P.O. BOX 749 PONTIAC, MICHIGAN 48056  
(313) 373-8800

# ARE YOU INTERESTED IN JOINING THE MICHIGAN AND BORDER CITIES GOLF COURSE SUPERINTENDENTS ASSOCIATION?

FILL IN THE QUESTIONNAIRE BELOW AND MAIL TO:



CLEM WOLFROM  
DETROIT GOLF CLUB  
530 Kendry  
Bloomfield Hills, MI 48013  
Off. 345-4589, Res. 334-0140



DATE \_\_\_\_\_

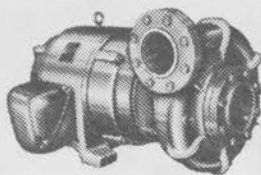
NAME \_\_\_\_\_

ADDRESS \_\_\_\_\_

CITY \_\_\_\_\_ STATE \_\_\_\_\_ ZIP \_\_\_\_\_

OR YOU MAY CONTACT THE NEXT GOLF COURSE SUPPLIER WHO CALL ON  
YOU AND GIVE HIM THE INFORMATION NEEDED FOR APPLICATION.

## An efficient pump for every Golf Course need . . .



Centrifugals  
5 HP to 125 HP  
Sizes to 1" thru 10"  
Capacities to 5000 GPM  
Pressures from 60 - 160 PSI

- PUMP REPAIR
- COMPLETE LINE OF PUMPS
- TROUBLE SHOOTING/PUMP SIZING
- REPAIR PARTS

### CENTURY Rain Aid

31691 Dequindre  
Madison Hts., MI 48071  
313/588-2992

22159 Telegraph  
Southfield, MI 48034  
313/358-2994

Century's Grand Valley Sprinkler  
3400 Jefferson S.E.  
Grand Rapids, MI 49508  
616/452-3373

#### Old Tom Morris Award, cont.

to your tasks assure our nation's golf enthusiasts of the world's finest courses."

Since leaving office, Ford has continued to bring international attention to golf through his participation in charitable golfing events, as well as sponsoring his own charitable golf tournament, the Jerry Ford Invitational Golf Tournament.

"President Ford was selected for this award because he exemplifies some of the same characteristics that Old Tom demonstrated throughout his life. Ford's love for the game of golf is known around the world. Mr. Ford, like Old Tom, is a gentleman first, a gentleman last," said President Timmerman. Old Tom Morris, one of golf's first greats, was a greenkeeper, golf professional, club and ball maker, golf course architect and accomplished player who won four British Open Championships between 1861 and 1867. At the Royal and Ancient, St. Andrews, Scotland, Old Tom acquired worldwide fame, boosting the popularity of golf throughout the British Isles and in many other parts of the world.

Golfing great Arnold Palmer and entertainer Bob Hope are previous recipients of the Old Tom Morris Award. President Ford will accept the Old Tom Morris Award during GCSAA's 56th International Golf Course Conference and Show in Washington, D.C., February 5-13, 1985. The presentation will be made at GCSAA's annual banquet the evening of February 12th at the Sheraton Washington Hotel. An international golf audience and representatives of every major golf association will be on hand for the banquet ceremonies. The banquet attendance is expected to reach 2,000. Country and Western singer Tanya Tucker will be the evening's featured entertainment.

---

If you fail to plan then you plan to fail.

Plan to work and work your plan.

## Shemin Nurseries, Inc.

FORMERLY TURF SUPPLIES, INC.

### Let's Talk Fungicides!

### We stock the Proven Best.

Tersan 1991, 2#-Proven systemic action.  
Tersan LSR, 3#-Leaf spot & rust control.  
Tersan S.P., 3#-Snow mold & Pythium.  
Daconil 2787, 2#-Very broad spectrum.  
Daconil 2787 2 Gal.Flowable, liquid.  
Benomyl Gran., 24#-Dry, spreadable.  
Chipco .26019, 2#- Broad spec. systemic.  
Fore (Dithane), 50#-Leaf spot & Rust cntl.  
Acti-Dione Thiram, 10#-Brown & Dollar  
Acti-Dione R.Z., 10#-Anti-biotic Fungicide  
Acti-Dione TFG, 1#-Water-Sol, Anti-biotic  
Bayleton 25W, 2#-Fusarium prevent & cure  
Dyrene Gran., 10#-Snow mold cntl. & cure

**KEN, DAVE, & GEOFF  
WOULD LIKE TO TAKE YOUR ORDER**

**6900 Pardee Rd. Taylor, MI 48180  
(313) 291-1200**

inches outer diameter by 6 inches deep. The 5½ by 6 dimensions of the original hole cup as for years raised a serious question as to why the Royal and Ancient went on to lay down the law of 4½ inches outer diameter by at least 4 inches deep . . . some 40 years later. Was the 5½ outer diameter too easy, or were other considerations taken besides that of degree of difficulty. The exact reasoning is unknown, but there are at least two very good theories as to how we have arrived at the present day dimensions.

1). It could be that the 4½ by 4 was common for any years at many clubs long before the R&A made it rule. It is known that the oldest hole cutter in existence today (part of a collection of golf antiquities from the Royal Musselburgh Club) had/has the very same dimensions of 4½ by 4, and according to the Musselburgh minutes of March 13, 1829, the Hon. Secretary was "authorized to pay the account of Mr. Gays for the instrument for forming the holes". So as early as 1829 these dimensions were common to at least one club.

2). The practice of inserting flag poles was not yet generally common at St. Andrews during the time when the land tile/hole cup was being developed. Perhaps the later use of flag poles may have been coincidental to the hole cup becoming standardized, and the metal cup being adapted to receive it.

In any event, the dimensions of 4½ by 4 seems to be with us to stay, despite the various attempts throughout history to tamper with it. In 1934, at the Year-round Open at the Miami Biltmore Course in Coral Gables, Florida, Gene Sarazen actually convinced the officials to enlarge the hole to 8 inches! The event served only to prove that good putters still sunk em, and poor putters still missed em.



**Serving you better**

**With QUALITY . . . .**

**MALLINCKRODT LEWIS**  
**FORE PAR CLEARY**  
**COUNTRY CLUB**

**CHICOPEE Upjohn**  
**FOX VALLEY Chipco**  
**DIAMOND SHAMROCK**  
**Yankee CYCLONE**

**PBI Gordon Aquatrols**  
**Turfgrass Products PanaSea**

South Lyon, Michigan 48178  
Phone: (313) 437-1427  
**GENE JOHANNINGSMEIER**





(Left to Right): CLEM WOLFROM, DAN UZELAC, KEVIN DUSHANE, CHARLIE GAIGE, KEN DeBUSSCHER, JON MADDERN, CRAIG ROGGEMAN (rear), ED HEINEMAN (front), BRUCE WOLFROM, MIKE EDGERTON, TOM MASON.



Two New Directors for 1985 — left, ED HEINEMAN; right, JON MADDERN.

# "ME"

You had better take good care of me. Perhaps you don't think much of me at times, but if you were to waken some morning and realize that you did not have me, you would start the day with an uneasy feeling.

From me you get food, clothing, shelter and such luxuries as you can enjoy.

If you want me to badly enough, I will get you a 12-cylinder automobile and a home on Park Avenue.

But I am exacting . . .

I am a jealous mistress; yet sometimes you seem hardly to notice me at all.

Infact, you make slighting remarks about

me at times and neglect me.

Considering the fact that you need me, not only for the material things of life but the spiritual as well, I wonder that you neglect me as you do.

Suppose that I should get away from you?

Your happiness would flee, for a time at least, your friends would worry and your bank account would dwindle.

So, after all, I'm pretty important to you.

Cherish me, take good care of me, and I promise that I will take good care of you.

**I AM YOUR JOB.**

---



"McGreen says..."

**U.S.S.**

**Vertagreen®**

**Tired of gimmicks?**

Want superior results at an economical price?

Don't commit until you have contacted your local distributor about our current Booking Program.

**U.S.S.** **Agri-Chemicals**  
Division of United States Steel  
P.O. Box 1685, Atlanta, GA 30301

## Benefits of Dormant Fertilization

A dormant nitrogen fertilizer application can be one of the most beneficial applications made in a fertilizer program.

It is important that this application be done at the time of year when verticle shoot growth has stopped. Although shoot growth is no longer noticable, the plant is still capable of producing roots and rhizomes. In fertilizing at this time of year, root and rhizome development can be increased, producing a healthier plant the following spring. This application will also increase the breaking of winter dormancy, improve recovery from winter infury and will stimulate an early spring green up. There also has been a considerable amount of research done indicating a dormant nitrogen fertilization may reduce the severity of Fusarium Blight, Helminthosporium Leaf Spot, and Stripe Smut, all common Kentucky Bluegrass diseases.

It is very important to keep in mind the timing of this application. If the fertilizer is applied too early in the fall and top growth is stimulated, the plant will be more susceptible to winter injury and disease stress the following season.

Paula Dietz

Benham Chemicals

LITTLE Johnny's grandfather was some of a philosopher and never missed an opportunity to give out bits of sage advice to his grandson.

"Yessirree, Johnny," he said one day, "remember, fools are certain, but wise men hesitate.

"Are you sure, grandpa?" asked Johnny.

"Yes my boy," said the old man, laying his hand on the youth's head, "I'm absolutely certain."

Bits & Pieces, July, 1980.



## Tire Wholesalers Company, Inc.

19240 West Eight Mile Southfield, Mich. 48075  
(1/2 Mile West of Southfield Road)  
Phone: (313) 354-5644



### TRUCK-CAR TRAILER MOTORCYCLE INDUSTRIAL TIRES



LAWN & GARDEN EQUIPMENT TIRES

"For Land's Sake 'Use Peat'"



## OXFORD PEAT CO.

1430 E. Drahner Rd.  
Oxford, Michigan 48051

PROCESSED PEAT  
Top Dressing Blends  
Custom Blending

FRED LATTA 313/628-5991

# Wm.F.Sell & Son, Inc.

SINCE 1923

RENTAL  
SALES - SERVICE



- ★ LOADERS ★ SWEEPERS
- ★ TRENCHERS ★ MOWERS
- ★ ROTARY CUTTERS
- ★ BACK HOE DIGGERS
- ★ BACK FILL BLADES
- ★ POST HOLE DIGGERS

Complete Line of  
Material Handling  
& Farm Equipment

JOB TAILORED EQUIPMENT

Call **282-5100**

16555 TELEGRAPH RD. — TAYLOR  
1 MILE SOUTH OF EUREKA



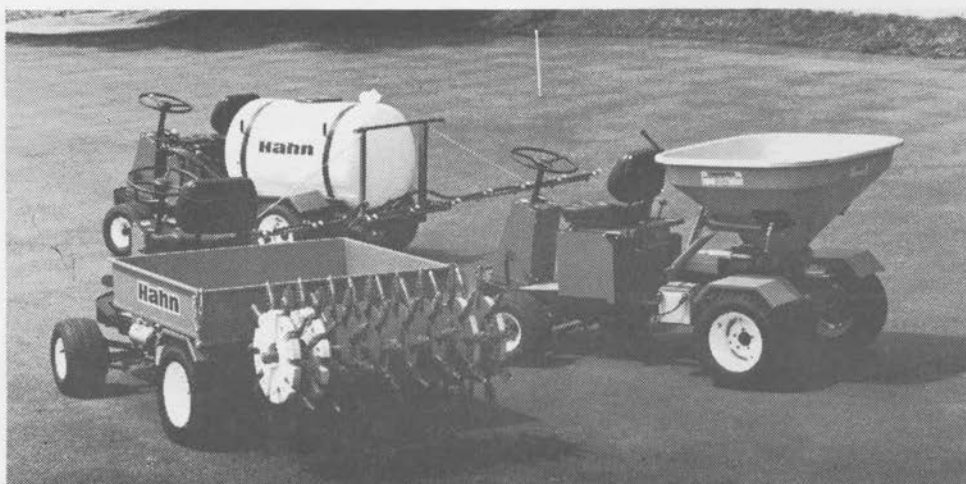
TOM MASON – Winner of the 6th Annual Clarence Wolfrom Classic, 1984.



DR. JOE VARGAS, center, thanking MR. PETE ROEHL, right and MR. CARL ROEHL, SR. for their generous gift to MSU.

# HAHN SPRAY-PRO 44, IT WORKS. AND WORKS... AND WORKS...

Greens or fairways... the Spray-Pro 44 with its big high flotation tires to protect your turf, converts in minutes to a Sprayer, Spreader, Aerifier or Utility Bed. Designed for easy on, easy off switching and year 'round service.



This "crew" should be working for you

#### the aerifier...

Hydraulically controlled from operator's position. Cultivates a full 42 inch width. Cleanly penetrates to 3 inches, depending on soil conditions. Optional Slicing Blades to open the soil with a minimum of turf disturbance.

#### the sprayer...

160 gal. poly tank, 3-section boom for 18-1/2 ft. coverage. Spray with 1, 2, or all 3 booms. Fingertip control of all spray system functions.

#### the spreader...

Precise rate settings for a uniform pattern. Top dress sand in 12 to 20 ft. swath, apply seed, fertilizer and lime 20 to 40 ft. Up to 500 lbs. per minute.

#### the utility truck bed...

Reinforced steel, 1500 lbs. capacity. Converts to dump bed with addition of Hydraulic Package.



Sold and Serviced by

#### LAWN EQUIPMENT CORPORATION

46845 W. 12 MILE ROAD NOVI, MICH. 48050  
P.O. BOX 995 (313) 348-8110

# Simplicity



## HORSEPOWER MATCHED TO THE SIZE OF THE JOB.

Long-life traction drive.  
Starts easily.  
Simple to store.  
Engine reliability.  
Exclusive Touch-O-Matic clutch.  
Anti-clog design.  
Cleans hard or gravel surfaces.  
Handles with minimum effort.  
Snow can't pack inside auger.

**W.F. Miller** Garden & Lawn  
Equipment Company

1593 S. WOODWARD AVE. BIRMINGHAM, MICHIGAN 48011

TELEPHONE: (313) 647-7700

**"A Patch of Green"**

31823 UTICA ROAD  
FRASER, MICHIGAN 48026



DEPT. SOIL & CROP SCIENCES  
TEXAS A & M UNIVERSITY  
COLLEGE STATION, TEXAS 77840  
ATTN: DR. JAMES BEARD

**JB**  
BEARD  
COLLECTION