

# CONNECTICUT CLIPPINGS

Volume 30, No. 2

April, 1996

## President's Message

Philip Neaton  
CAGCS President

I hope everyone who attended the GCSAA Conference & Show in Orlando had a good time and a safe trip home. It was a little depressing to leave Florida when it was sunny and 70° and return home to 18° in a snow storm. It sure is great to see that Spring is around the corner.

The National elections went well. Mike Wallace, CGCS, got enough votes to be reappointed to the GCSAA Board for another year, and all the by-laws changes were approved. This means that CAGCS will have to make some bylaws changes as well before we can become an affiliated chapter. Our changes should be minor and only affect our membership classifications.

At our last Board meeting, CAGCS agreed to join the Rhode Island Golf Course Superintendents Association to begin organizing a regional Turf Conference. It is our hope to unite all the New England Associations for one big regional show. Currently, Maine, Massachusetts, New Hampshire and Rhode Island are hosting their own shows and competing against each other for a limited amount of

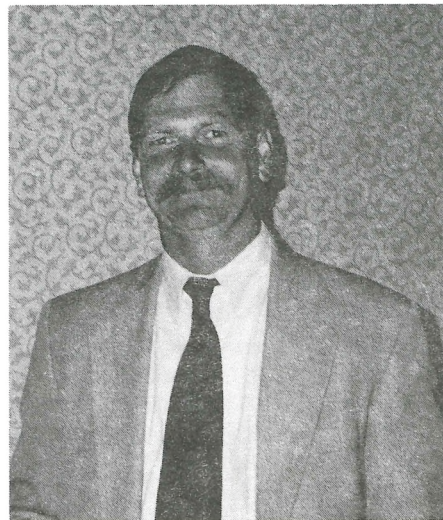
*(continued on page 2)*

## CAGCS honors Thomas Watroba 1995 Superintendent of the Year

John F. Streeter, CGCS, Editor

Tom Watroba, superintendent/manager of the Suffield Country Club and past president of CAGCS was presented the coveted award of Superintendent of the Year at our Winter Seminar on March 19th.

Since this award is bestowed upon the recipient by a vote of his peers, it has become our organization's most prestigious honor. The award is given annually to an active Class A or Life member who has held that classification for a minimum of five years. The award is presented to an individual who has shown exemplary skills in maintaining a golf facility and one who has devoted his or her time and effort to help benefit fellow superintendents along with local and national golf associations.



Tom Watroba certainly meets this criteria. When Tom was elected CAGCS President in 1990, he was a catalyst of new energy of our ever-growing association and was instrumental in paving the way for us into

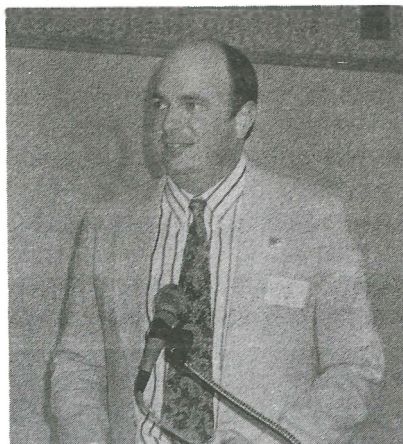
the 1990s. For those of us who have been around, we can look back to 1990 and see how the building blocks from Tom's administration have vaulted us into the efficient, organized and professional association which we have now become. Tom was responsible

for strengthening the organization by encouraging better relations amongst our large and diverse membership.

Tom believed that comradery amongst members, along with staying current and progressive, were very

*(continued on pages 2 & 3)*





CAGCS President, Philip Neaton

**President's Message**

(continued from page 1)

support. Last year, the Boston and Providence shows were both successful; but, if they were combined in one location, it could be a great conference.

I would like to thank Brian Skelly for all of his work and efforts in organizing our Winter Seminar which was rescheduled to March 19th because of the January Blizzard.

After all of the organization the Seminar originally required, it had to

be done all over again for March.

A lot of time went into the rescheduling of the speakers, telephoning all pre-registered members the day before our original January date and notifying them of the cancellation, and negotiating with the DEP and GCSAA for recertification credits for this seminar.

Congratulations to Tom Watroba (Suffield CC) on his election as 1995 Superintendent of the Year. Tom has been a member and supporter of CAGCS for 15+ years, and we would like to thank him for his years of membership and contributions to our association.

Also, Dr. Bill Dest from U-Conn is looking for golf courses willing to participate in research regarding:

1. Stimp meter research for perceived green speed vs. actual green speed, and
2. Can use of composted fertilizers (Sustane) reduce fungicide rates on putting greens.

If you would like to participate in the these research topics, please call Dr. Dest at (800) 486-0189.

**Tom  
Watroba**

important goals of his administration.

Under Tom's administration, our association jumped into the new age of the computer and helped establish a permanent CAGCS home office. Under Tom's administration we saw the business matters of our association become more efficient, the attendance at our membership meetings and special events increased twofold, and comradery in the association began a new era.

A special highlight of Tom's administration was the organization of the first Golf Summit. As many of you know, this event was greatly received in its infancy. It was Tom's thought that an event of this type could only help improve and promote the relationship between the club professionals, superintendents, managers and club board committee chair-



**C A G C S Board of Directors**

**President**  
PHILIP NEATON  
*Black Hall Club*

**Vice President**  
JOHN NAPIER, CGCS  
*Stanley Golf Course*

**Secretary**  
ANTHONY GROSSO  
*Pautipaug Country Club*

**Treasurer**  
HEATHER L. GARVIN  
*Canton Golf Course*

**Immediate Past  
President & EIC Rep.**  
PETER R. PIERSON  
*Pequabuck Golf Club*

**Education**  
BRIAN SKELLY  
*Old Lyme Country Club*

**Golf**  
JOHN MOTYCKA  
*Skungamaug River Golf Club*

**Membership**  
SCOTT D. GENNINGS, CGCS  
*Wallingford Country Club*

**Public Relations**  
Gregory Bradley  
*Farmington Woods Country Club*

**S & R**  
GREG STENT  
*Wampanoag Country Club*

**Social & Welfare**  
JUD W. SMITH  
*Orange Hills Country Club*

**Commercial Rep. to Board**  
ARTHUR deATIENZA  
*P.I.E. Supply Company*

**CAGCS Office**  
P. O. Box 3678  
Woodbridge, CT 06525  
Telephone & Fax Nos.  
(203) 387-0810

*Connecticut Clippings*  
is an official publication  
of the Connecticut  
Association of Golf  
Course Superintendents.

**Newsletter Editor**  
John F. Streeter, CGCS

**Committee**  
Anthony Grosso  
*Pautipaug Country Club*  
~and~  
Thomas Watroba  
*Suffield Country Club*

**Photos**  
David Basconi



## Superintendent of the Year

people.

Tom joined CAGCS in 1980 and became a member of the Board of Governors in 1983. He served as membership chairman, secretary, long-range planning chairman, vice president and eventually served as President for the years 1990 and 1991.

Tom became the golf course superintendent at Suffield CC in September of 1979, a club at which he still resides.

After graduating from the University of Massachusetts, Tom's first job out of school was that of the assistant superintendent at Winchendon Golf Club in Winchendon, MA. After a brief stay there, Tom moved in to become the superintendent at the Forest Park Country Club in 1977.

Tom became interested in the game of golf while he was learning to caddy and play the game in his home in the Berkshires.

Although Tom's father was a scratch golfer, Tom soon realized that he would never be able to make a living at playing the game, so he decided that golf course management was the avenue for him.

As many of you may know, Tom and I have been friends and colleagues

for quite some time. Tom's no non-sense approach to turf management is always a refreshing conversation that I look forward to... and we do a lot of it.... turf talk, that is!!!

Tom's management qualities have paid off for his employer, Suffield Country Club. Two years ago, Tom was asked by his club to take on the duties of clubhouse manager, along with his present duties of golf course superintendent. As we all know, managing a golf course, whether it be 9 or 18 holes, is a challenging endeavor in itself. Hats off to Tom for wearing two hats every day.

The Suffield Country Club is a private, very scenic 9-hole layout located in

Suffield, CT, where Tom resides with his wife, Bonnie, and two children, Travis and Tim.

Word has it that the next generation of Watrobas, through his son Travis, will enter the golf management field as he is attending the University of Massachusetts.

I would like to conclude with a personal note to my long-time friend and colleague ... "Congratulations. It was long overdue!"



Tom Watroba (left) receiving the Superintendent of the Year Award from Art deAtienza (right), Commercial Rep. to the Board

**PARTAC<sup>®</sup>**  
GOLF COURSE  
TOP-DRESSING



AMERICA'S PREMIUM  
HEAT TREATED  
TOP-DRESSINGS

**TYPAR<sup>®</sup>**  
GEOTEXTILES & TURF BLANKETS

U.S. GOLF HOLE  
**TARGETS<sup>™</sup>**  
AND MUCH MORE!

800-247-2326

DISTRIBUTED IN CT BY:  
JAMES CARRIERE & SONS

914-937-2136

VALLEY FARMS SUPPLY  
203-651-8555

### METRO MILORGANITE, INC.

For a HEALTHY ADVANTAGE over SEASONAL PROBLEMS WE OFFER a WINNING LINE-UP



- FERTILIZERS
- TOP DRESSINGS
- BIOSTIMULANTS
- SEED
- PESTICIDES
- GOLF COURSE ACCESSORIES

Rick Appgar    Scott Appgar    Joe Stahl

**Metro Milorganite Inc.**  
DEPEND ON US FOR FOUR SEASON SOLUTIONS  
(914) 666-3171 Fax (914) 666-9183  
365 Adams Street, Bedford Hills, NY 10507

## 'Just in Time' addresses pesticide storage/liability issues

The 'just in time' concept emerged within the last decade to eliminate storage of large inventories of manufactured goods by producing just what is needed and shipping it 'just in time'.

Superintendents are applying this concept to their fertilizer and pesticide purchases.

Prior to "Just in Time", some superintendents created co-ops to buy and store large inventories of chemicals at a designated location.

The result was insurance coverage skyrocketed or wasn't available, confidence in accurate recordkeeping

*The significance of 'just in time' is that the EPA's pesticide storage regulations apply only to users who keep more than 11,000 pounds of product on-site for more than 90 days at a time.*

decreased and staffing the facility was difficult.

By utilizing 'just in time' superintendents are successfully managing smaller amounts of fertilizers and pesticides for shorter periods of time.

The significance of 'just in time' is that the EPA's pesticide storage regulations apply only to users who keep more than 11,000 pounds of product on-site for more than 90 days at a time.

### Advantages

- Reduces amount of stored pesticides on property.
- Makes compliance with federal, state, local regulations easier.
- Keeps chemicals fresh.
- Encourages more environmentally-friendly application procedures.
- Reduces blanket treatment practices.
- Eliminates "spray once, spray all" mentality.
- Focuses attention on inherent soil problems for correction rather than treatment of symptoms.
- Helps cash flow for some

*(continued on page 7)*

# Tee & Green & In Between

Whether your challenge is a deadline, a tee, a green, a fairway, a rough, or a bunker surround, we have a blend that fits your needs.

We understand the variety of problems you face because we have spent a great deal of time listening to golf course superintendents. As a result, Tee & Green Sod offers the most complete product line



**TEE &  
GREEN SOD**  
— INCORPORATED —

available to the golf course industry— even a four-foot wide washed roll!

Give us a call for information about our selection of products, and our unique harvesting and washing techniques.

- Bentgrass
- Bluegrass
- Washed sod
- Bluegrass-Ryegrass
- Bluegrass-Fine Fescue

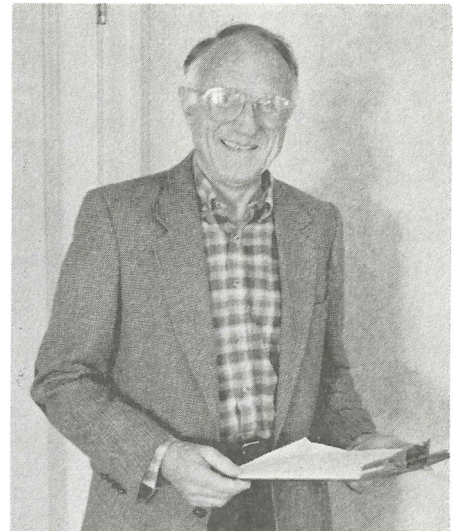
401/789-8177 • 401/789-3895 (fax) • PO Box 418, Exeter, RI 02822





Larry Pakkala, CGCS (Woodway CC) and  
Scott Niven, CGCS (The Stanwich Club)

**C A G C S**  
**Winter Seminar**  
**March 19th**  
**Ramada Inn**  
**Meriden, CT**



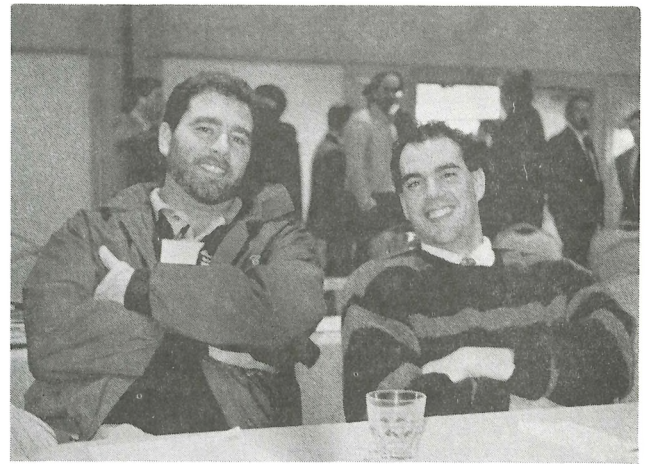
Dr. William Dest  
University of Connecticut



← Kevin Balocca  
with Philip Neaton

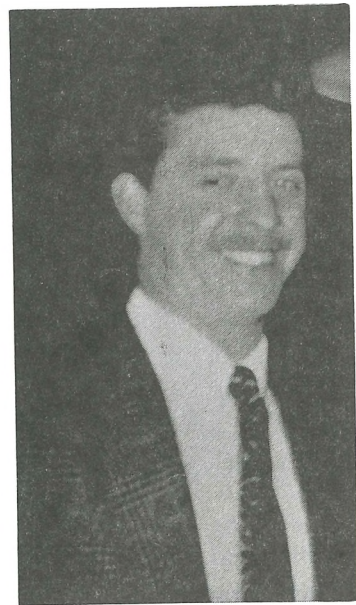
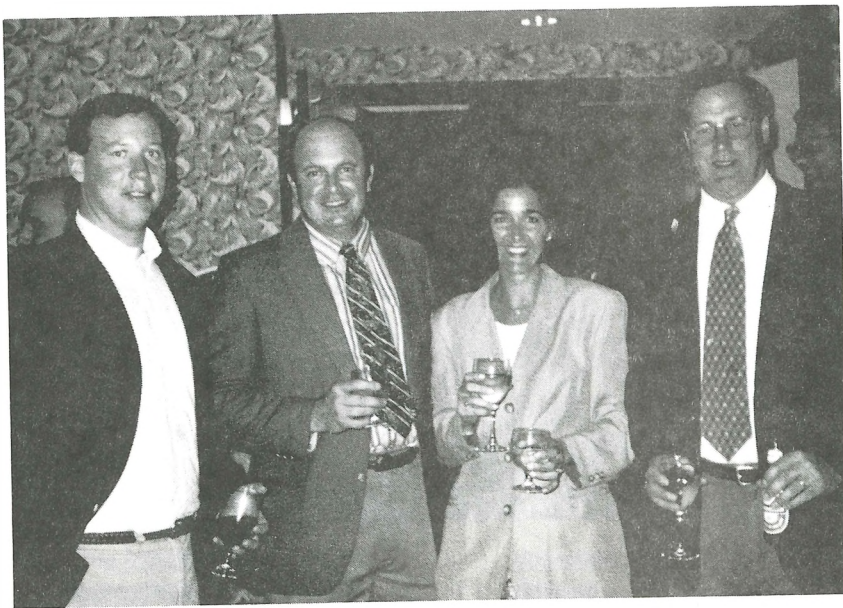
Kevin DeVaux ⇒  
(Stanley GC) with  
Thomas DeVaux ⇒  
(Race Brook CC)

Below left are  
Anthony Baviello,  
CGCS (Yale GC)  
with Peter Hull  
(Turf Products)

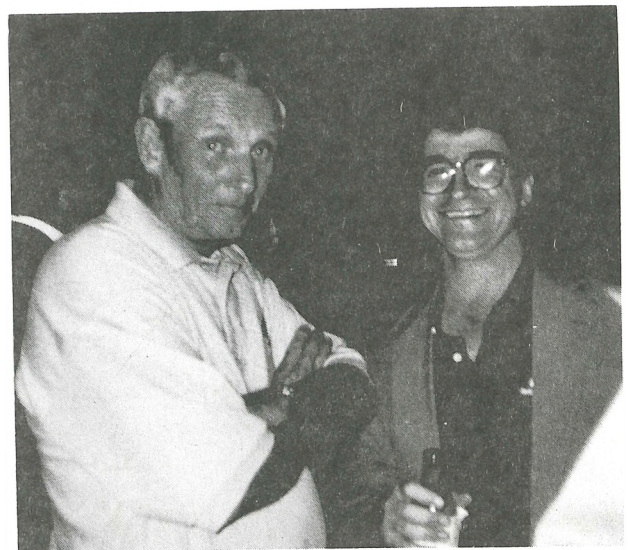


Brian Skelly, Education Chairperson, with  
Dr. Kimberly Erusha, Director of Education, USGA





***Shots from  
hospitality suite  
National Conference  
and Show  
Orlando, Florida***





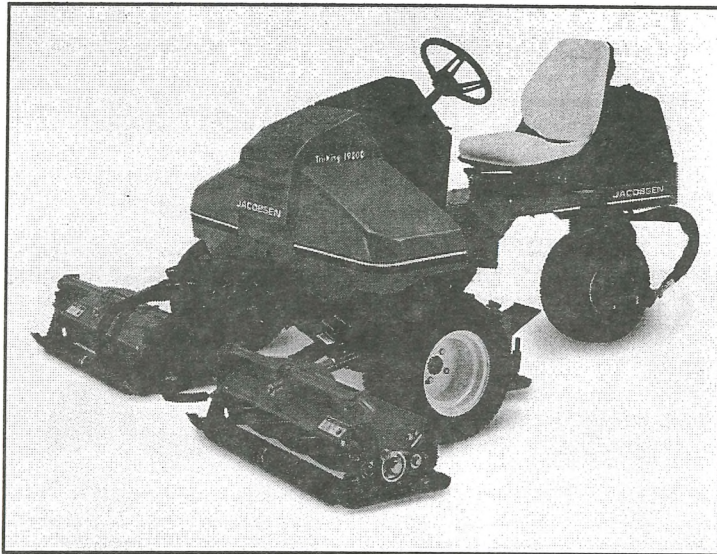
# SAWTELLE BROTHERS, INC.

65 GLENN ST LAWRENCE, MA 01843

21 E. DUDLEY TOWN RD BLOOMFIELD, CT 06002

Featuring New Innovative Products From JACOBSEN TEXTRON

## JACOBSEN TRI - KING 3 WD TRIPLEX MOWER



*Ergonomically designed for all day comfort*

*Automatic 3 wd delivers exceptional traction and control*

*Reliable fuel efficient 19 horse power Kubota diesel engine is C.A.R.B. approved*

*Features a steering wheel and power steering for more responsive handling*

*Contoured hood design gives operator unobstructed view of front reels for more efficient mowing*

## JACOBSEN TURFCAT Out - Front Rotary Mower

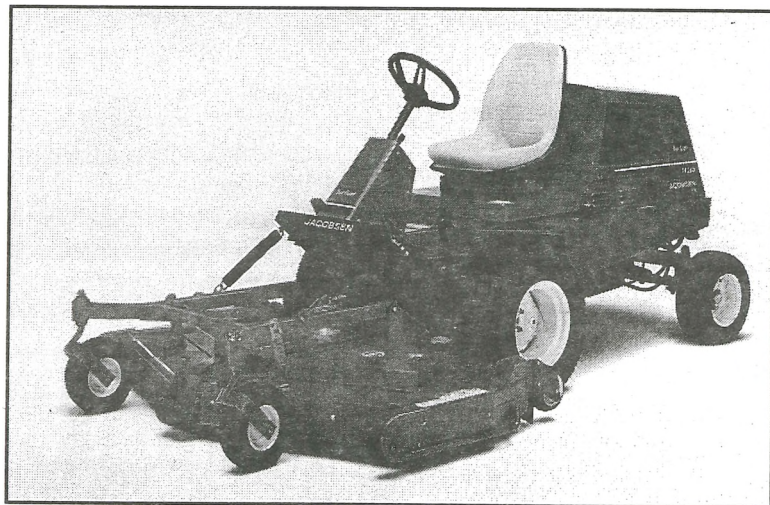
*Features new mulching deck available in 60" or 72" sizes*

*Quick and productive: 6 mph mowing speed, 10 mph transport speed*

*All-hydraulic, 2 or 4 wheel drive for sure-footed traction*

*Choose a Kubota 23 or 28 horsepower diesel engine with 2 or 4 wheel drive, or a Ford 45 horsepower gas engine*

*Engine area easily accessible*



# 1-800-999-TURF

Servicing New England With Turf Equipment & Irrigation Supplies Since 1932



# Grass

# Catcher

### Toro's Loper receives top honor

Mark Loper, Vice President of Toro Products Corporation: Irrigation Division, has received Toro's top honor at the recently held Toro University and Awards ceremony in Phoenix, Arizona. Mark received the "Master Salesman Award" for his outstanding sales achievements, dedication to customer support and after sales satisfaction.

The Master Salesman Award is only given out every three years or so when Toro feels that someone has met the high standard required to receive the award. In addition to receiving the top honor, the good people at Toro had Mark's wife Nanette secretly flown out to Phoenix to be there to watch him receive the award! It is truly a crowning achievement for Mark and his family.

Please join us in wishing Mark a hearty congratulations!



**Congratulations to John Kotoski, golf course superintendent at the Pine Ridge CC in North**

Oxford, MA, for winning the net prize in the 5th flight (hdcp. index 10.5-12.3) at the 1996 GCSAA Golf Tournament



### U-Mass Turfgrass Research Field Day June 5, 1996

UMass Extension and the Dept. of Plant and Soil Sciences will host a Field Day for turf professionals and associated grounds management professionals on Wednesday, June 5th, at the UMass Turf Research Facility on River Road in South Deerfield, MA.

This year's field day will include vendor displays and demonstrations.

Pesticide recertification contact hours and credits have been requested from all six New England states as well as New York.

Pre-registration deadline is Friday, May 25th. On-site registration is allowed, but will not include lunch.

For fees, registration, exhibitor and other information, contact Thom Griffin, Manager, Turf Research Facility, at (413) 545-3066, or Mary Owen, Extension Educator, at (508) 892-0382.

### Green Book

The 1996 Membership Directory (Green Book) will be going to print at the end of April.

Any member whose dues remain unpaid will be removed from the membership roster.



### Requests for CAGCS Scholarship Applications Deadline - May 15, 1996

The deadline for requests for CAGCS scholarship applications is May 15th. Applications must be requested in writing from the S & R Committee, CAGCS Office, P. O. Box 3678, Woodbridge, CT, 06525.



### "Par for the Course"

"Par for the Course" will again return to ESPN in 1996. Twenty-five original half-hour episodes will air weekly on Sunday mornings at 7:30 eastern time.

GCSAA has announced that the Scotts Company has signed on to be the sponsor of the television show.

Some of the features on "Par for the Course" will be lawn tips from golf course superintendents, along with featuring superintendents from a different tournament site each week.



**WHITE CONTRACTORS**  
GOLF COURSE CONSTRUCTION & RENOVATION



Thomas A. White  
James E. Morris, jr.  
203-869-8808  
914-234-0092  
P.O. Box 484  
Old Greenwich, CT  
06870-0484

Consistently High Quality    Competitive Prices    Prompt Delivery

**CONNECTICUT MULCH DISTRIBUTORS, INC.**

KEN LINDELAND

WOOD CHIPS - BARK - LANDSCAPE TIES

Business Address 1300 East St. Suffield, CT. 06078	Mailing Address 1515 North Stone St. W. Suffield, CT. 06093	Telephone (203) 623-2987 Fax 292-1047
--	---	---



## GCSAA promotes repairing ball marks, replacing divots and the raking of bunkers

GCSAA has developed a new piece of "clip art" that superintendents can use to encourage golfers to repair ball marks, replace divots and rake bunkers. "It's every player's responsibility" is a black-and-white, camera-ready ad slick that any GCSAA member can reproduce in club/course newsletters, local golf publications or even on score-cards.

To obtain a copy, contact the GCSAA Public Affairs Department at 913/832-4490.

### It's every player's responsibility...

- Repair ball marks
- Replace or fill divots
- Rake bunkers



*A message from your golf course superintendent and GCSAA*

### Pesticide storage/liability issues

(continued from page 4)

facilities.

- Eases recordkeeping.
- Allows comparative shopping, bidding and flexibility to purchase from a variety of suppliers.

It is important to note that 'just in time' does not eliminate the necessity of a pesticide storage facility. In fact, a well-designed and constructed pesticide storage facility provides even greater liability protection to facility owners.

#### Construction Considerations:

- ✓ Single-poured floor with sealant
- ✓ Forced ventilation
- ✓ Louvered doors
- ✓ Explosion-proof lighting and heating
- ✓ Dry fire extinguishing system

Source: Phillip A. Anderson, Old Westbury CC, Old Westbury, Long Island, NY. & January/February issue of the GCSAA LEADER BOARD.

### Calendar of Events

April 22nd  
Monthly Meeting  
Norwich CC  
Bruce Morse, Supt.

May 13th  
Monthly Meeting  
New London CC  
John A. Creevy, Supt.  
*(Note: Date changed to May 13th. This meeting was originally published as May 16)*

June 18th  
Monthly Meeting  
The Farms CC  
Paul A. Sabino, Supt.

July 16th  
Monthly Meeting  
Madison CC  
Michael Chrzanowski, Supt.

September 10th  
Annual Invitational  
Woodbridge CC  
John F. Streeter, CGCS, Supt.

September 19th  
Monthly Meeting  
Pautipaug CC  
Anthony Grosso, Supt.

October 7th  
Monthly Meeting  
Clinton CC  
Michael Decker, Supt.

October 15  
Annual S & R Tournament  
Black Hall Club  
Philip Neaton, Supt.

November 5th  
Annual Meeting  
Suffield CC  
Thomas Watroba, Supt.

*Remember - Call the CAGCS office (203)387-0810 when you know your reservation will arrive late!*



# Members' forum

## How is your recordkeeping?

Dan Rackliffe, CGCS

The question that comes to my mind is how many of us really have a handle on what it costs to keep a particular piece of equipment in running condition, and when it should be replaced? Now that you've made the decision, can you prove it's the right one?

As belts are tightened and our employers are increasingly looking for ways to shave operations cost, a solid preventive maintenance program becomes a necessity. Equipment is, as we all know, a substantial investment. It is up to each one of us to care for that investment and see that it serves its intended purpose for as long

as practical. What is a piece of machinery's practical life? This is what we determine by preventative maintenance—and—just as importantly, recordkeeping. The days of looking over the equipment in the barn and making decisions on repair or replacement based on gut feeling are rapidly coming to an end. Documentation, as with personnel and pesticides, is a must. It is, and should be expected of the superintendent—after all, you are holding the reins of control for probably over a million dollars in equipment and facilities investment, in many cases much more.

Equipment maintenance records can be handled in several ways. The most basic method is simply keeping an ongoing written record of each piece of equipment. A bit more exacting, and in my mind easier and better serving, is a computer driven data base program. Several of these are available and are tailor made for golf course management. Whatever your choice, keeping records is a must.

The benefits of recordkeeping are numerous. These records will provide you and your mechanic with an accurate history of each piece of equipment under your care. It will provide you with cost analysis, length of down time, over-all reliability and perhaps the most important reason of all, the tool necessary to convince your greens committee that a particular piece of equipment needs to be replaced.

You should be able to prove that your club needs to make a 10%-15% of budget, capital expenditure every year. You will find that if this figure

is not maintained, over time you will be looking at a maintenance facility full of costly, unreliable and probably out-dated equipment.

I have personally found that a combination of written records kept as a mechanic works on piece of equipment and later transferred to a computer file works best for me. Because my mechanic is responsible for all the equipment at not only the golf course, but throughout the Parks and Recreation Department, I am better able to maintain a feel for the condition of the equipment in both departments and at the same time, release the mechanic from the time necessary to load information. This takes just a few minutes a day to accomplish and in the end, is much more organized and detailed than a series of notebooks for each piece of equipment. Information on any machine in my care with any notable value is available within moments with a complete maintenance history.

Whatever your choice of recordkeeping is, a neat concise presentation of equipment maintenance history is the only sure way to prove that keeping a piece of equipment another year is not fiscally prudent. Done correctly, you will present yourself, through your records, as a solid, knowledgeable professional with the know-how to get the job done given the proper tools.

Take the time now to set up a program of some sort. It will take time, particularly if it's computer generated, but it's merit can not be denied.

*Dan Rackliffe, CGCS, was presented with the 1996 Leo Feser Award at the Opening Session of GCSAA's Conference & Show in Orlando, FL.*



**(800) 243-7582**

**CHOICE OF BENTGRASSES**  
 - Maintained at 5/32" and 1/4" -  
 Penncross • Providence • Pennlinks  
 3-Way Fairway Blend

—  
 Pallets or Big Rolls  
 Washing Service Available

—  
 High Fine Fescue Mix  
 Versatile Blue-Fescue-Rye Mix  
 Low-Cut Blue-Rye Available  
 Farm Inspection Welcomed



## Summer Patch! Anthracnose! Pythium Root Rot!

### *What's next? Mutant earthworms that eat bentgrass?*

Greg Stent, Scholarship & Research Chairperson

Who knows what evil lurks in our precious turf? The science of growing grass is evolving all the time, and we had better make good use of the research available to us.

Competent, thorough research requires funding. Through participation in the Tri State Research Foundation, we have a unique opportunity to give support and direction to research that will benefit our region specifically.

Any aspect of our job could be addressed—diseases, dormant fertilizing, greens rolling, oriental beetles, aerification timing, seeding recommendations, etc.

Please make an effort to convince your club to participate in the Tri State Research Foundation. Any

course that contributes is entitled to a free turf sample analysis by Dr. Noel Jackson of the University of Rhode Island.

*It is up to us to  
recognize and  
communicate our  
problems or questions  
to those who can  
find answers!*

For further information, feel free to contact our CAGCS office (203/387-0810) or call me directly (I'm in the Green Book ("860/233-5737")).

### From the editor

John F. Streater, CGCS

The "Members' Forum" will be a place for any and all CAGCS members to communicate their concerns and share ideas and experiences with fellow members. I urge all members to participate.

Hopefully, I will not have to solicit people to come forward; but, if I do, I know where to find you! Even though you may not be a Hemingway, we urge you to get an idea on paper, and our *Clippings* staff will do the editing.

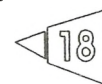
Anyone out there who has anything to say can submit your material to the CAGCS Office, P. O. Box 3678, Woodbridge, CT, 06525. The deadline date for our next issue is May 15th.

Looking forward to hearing from you!!!

# SODCO

*New England's Finest Sod*

- High Fine Fescue Mix Blend
- Quality Bluegrass Sod
- Bluegrass/Fescue Blends
- Bluegrass/Rye Blends
- Penncross Bent
- Penncross
- Providence
- Providence/Putter/SR 1020
- Sod Handler Delivery
- Washing Services Available
- Installation Available
- Unrolling Service
- Competitive Prices
- 500 sq. ft. pallets or Big Rolls
- Farm Visits Encouraged
- Site Review/Samples



**1-800-341-6900**

*If you think you are beaten, you are;  
If you think you dare not, you don't.  
If you'd like to win, but think you can't, it's almost a cinch you won't.  
If you think you'll lose, you're lost,  
For out in the world we find success begins with a fellow's will;  
It's all in the state of mind.  
If you think you're outclassed, you are;  
You've got to think high to rise.  
You've got to be sure of yourself before you can ever win a prize.  
Life's battles don't always go to the stronger or faster man;  
But soon or late the man who wins is the one who thinks he can.*

—Walter D. Winstle

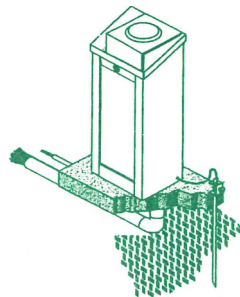




**A Complete Line of Innovative, Rock-Solid Golf Irrigation Equipment.**

The Legacy Radio Genesis Central Control System will let you stand alone. It includes the following features:

- Complete programmable satellite
- Non-dedicated radio programming
- Hand-held operations through computer
- Two-way communication
- Stealth Antenna



Main Office: 243 Woodmont Road • P.O. Box 3049  
Milford CT 06460 • (203) 878-0658



**GCSAA bylaws amendments approved**

The members of GCSAA approved one Article of Incorporation change and all 12 bylaws changes on the ballot at their annual meeting in Orlando, FL.

Each ballot issue was passed by a substantial margin. A two-thirds majority vote is required for adoption of bylaws changes. The ballot issues voted in are:

- Ballot Issue No. 1, modified the articles of incorporation allowing chapter delegates and proxy voting for modification in annual dues for Classes AA, A, B and C members;
- Ballot Issue No. 2, beginning July 1, 1997, each new Class A and B member residing in the United States, except Alaska, must also be a member of an affiliated chapter;
- Ballot Issue No. 3, removing voting rights from Class C members and adding a section to the bylaws delineating the rights of membership;
- Ballot Issue No. 4, all chapters must have an Affiliation Agreement with GCSAA and establish disciplinary action for violation of the agreement and Code of Ethics;
- Ballot Issue No. 5, allow the Standards/Bylaws Committee to reject proposed amendments and provide a means for an individual to submit a proposed amendment to membership vote;
- Ballot Issue No. 6, allow chapter delegates and proxy holders to vote on modification of annual dues, allowing the board of Directors to remove or discipline a board member, allowing for the board to hold special meetings by phone, allowing a Director to waive the right to meeting notice, indemnifying Directors for simple negligence in accordanced with state laws and providing for dissolution of the Association and distribution of the assets in accordance with state and federal laws.

A ballot for reduction of Class C member dues to \$105, one-half of Class A and B dues, was also approved.

**What this means to CAGCS**

Fortunately, CAGCS has very little to change to comply with the amended By- Laws or the Chapter Affiliation Agreement. One area we will have to revamp is our membership class requirements. Class A will now pertain to superintendents who have at least three years experience. Class B will be superintendents with less than three years and all assistants will be classified as C members.

Our Class C members will be reclassified as Affiliate members.

Effective July 1, 1997 any Class A or B member who is a member of CAGCS must also be a member of GCSAA and vice versa.

**Sterilized Top Dressing**

especially formulated for your area to specifications recommended by leading universities and testing laboratories.

**EXCLUSIVE WITH EGYPT FARMS:** All materials are thoroughly mixed and sterilized by indirect heat in our special process. The sand particles are actually coated with a mixture of top soil and peat humus for completely homogenous mixture that will not separate during handling and spreading.

**COMPUTERIZED BLENDING** of soil mixtures for a superior growing medium.

**CUSTOM ON-SITE SOIL BLENDING AND TESTING** with a portable computerized blender.

Green and Tee construction materials and mixes conforming to your specifications are also available.



Egypt Farms  
P.O. Box 223  
White Marsh, MD 21162  
(410) 335-3700

**IBDU and DAF EX**  
PROFESSIONAL PRODUCTS

- Bunker Sand • Spaghnum Peat
- Turf Seed

**sof'n-soil**  
LAWN & GARDEN GYPSUM

**Alitec**  
PROFILE SURFACE

**WOODACE**  
LANDSCAPE & ORNAMENTAL FERTILIZER

**R & R**  
GUARANTEED REPLACEMENT PARTS

**AMPEL Milorganite**  
ORGANIC FERTILIZER

**Fujerray**

**AQUA-AID**  
WETTING AGENT

**Shaw's**  
PROFESSIONAL TURF FERTILIZERS

**AQUA-ROOT**  
BIO-STIMULANT ROOT ENHANCER

**the PROPORTIONER SYSTEM™**

**LO-DOSE**  
INJECTOR SYSTEM

**CONTECH**  
CONSTRUCTION PRODUCTS INC.

**TerraBond TerraFlow**  
**WINTERGREEN**

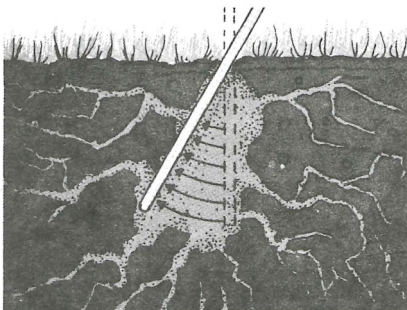
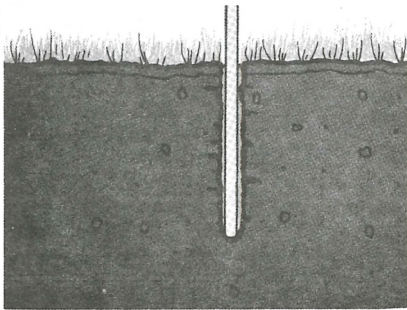


# Specializing in Deep Core Aeration

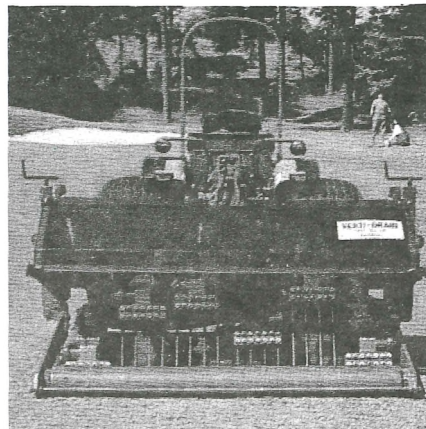
The Ultimate Solution  
for the Problem of Compacted Soils

## WHY AERATE?

Many turf areas, including putting greens, are constructed with heavy, near impervious soils. Problems are compounded with the present-day use of large and heavy equipment. This, coupled with significant vehicle and foot traffic on turf areas, adds to surface compaction. Severe compaction restricts the ability of the soil to drain properly, a major limitation of most turf soils. The result is an unhealthy and shallow root system. Aeration solves the compaction problem and allows air, water, and fertilizer to be effectively dispersed throughout the soil. The result is a healthy turf which resists stress associated problems.



Shattering effect of the soil



## OUTSTANDING PERFORMANCE... variable depth down to 16 inches

ARMSTRONG TURF CARE utilizes "Verti-Drain" which has been proven successful world wide—alleviating the most difficult soil compaction problems. "Verti-Drain" penetrates to a maximum soil depth of 16 inches...more than 2½ times deeper than any other aerator on the market today. The tines pivot back and forth, creating a "lifting" effect to the soil. This unique action combines penetration through the soil pan for vertical drainage with a shattering effect of compacted layers for thorough aeration to a maximum depth of 16 inches. The overall result...a greatly improved soil environment which allows deeper, stronger and healthier root systems because of improved drainage. A soil that promotes turf which accepts more activity and requires much less frequent watering.

## VERSATILE...AND COMPETITIVELY PRICED

ARMSTRONG TURF CARE works on all types of soils and in a wide range of applications including: Golf Courses (Greens, Tees, Fairways, Roughs), Tennis Courts, Athletic Fields, and Sod Farms. ARMSTRONG TURF CARE always strives to maintain the lowest competitive price and the finest possible service to its customers.



Solve your compaction problems today.  
For a free estimate call ARMSTRONG TURF  
CARE at 413-637-2592.

## PLEASE CALL TODAY

Two

Machines Available

*Armstrong Turf Care*

56 Lime Kiln Road, Lenox, MA 01240 413-637-2592

Mark Armstrong



**CAGCS thanks these patrons for their continued support of our Association!**

**A-OK Turf Equipment**

Articulator Dealer  
Coventry, RI 02816  
Michael D. Cornicelli  
(401) 826-2584

**AgrEvo USA Company**

2711 Centerville Road  
Wilmington, DE 19808  
David J. Sylvester  
(860) 828-8905

**Agriturf, Inc.**

59 Dwight St., Hatfield, MA 01038  
Chris Cowan (800/346-5048)  
Jim Wierzbicki (800/346-5048)  
Kyle Kordas (800/346-5048)

**ALPINE, the CARE of TREES**

Excellence in Tree Care  
Ridgefield (431-4100)  
Westport (222-5595) Norwalk (847-1855)  
Greenwich (661-8014) Darien (655-8008)

**Anderson Turf Irrigation, Inc.**

5 Cronk Rd., P. O. Box 7036  
Plainville, CT 06062  
Jesse J. Anderson, Jr.  
(860) 747-9911

**Bruedan Corp. of Connecticut**

E-Z-GO & YAMAHA  
GOLF, TURF & UTILITY VEHICLES  
Scott O. Lowe ~ Frank Savakis  
(800) 773-6740

**The Cardinals, Inc.**

166 River Road  
Unionville, CT 06085  
John Callahan  
(860) 673-3699

**The Chas. C. Hart Seed Co.**

P.O. Box 9169, 304 Main Street  
Wethersfield, CT 06129-0169  
R. Sibley ~ R. Holcomb ~ P. Bednarczyk  
(860)529-2537 & (800)326-HART

**C. R. I. S.**

923 Woodtick Road  
Wolcott, CT 06716  
Chris Carney  
(203) 879-2362

**D & S**

Floratine Products, Nova Tee  
Flymo, Douglas Rollers, Trion Lifts  
Dave Basconi  
(203) 250-TURF

**Doering Equipment Co.**

162 Grove St., Franklin, MA 02038  
Rod Cooper, Don Doering, Mark Doering  
(508) 520-3629 & (860) 276-8188  
John Deere Agrimeatal & Others

**Earth Works, Inc.**

Custom Deep Aerification Service  
Old Greenwich, CT 06870  
Patrick Lucas, CGCS ~ Eric Azars  
(800) 815-1113 FAX (203) 698-1920

**Eastern Land Management, Inc.**

Golf Course Construction Services  
Stamford, CT 06902  
Bruce T. Moore, Sr., CCLP  
(800) 926-GREEN

**Fairway Landscapers, Inc.**

Golf Course Construction  
So. Glastonbury, CT 06073  
Walter C. Varni  
(860) 633-1273

**Glenmore Landscape Service**

98 Hack Green Road  
Pound Ridge, NY 10576  
Glenn S. Moore  
(914) 764-4348

**Greenacres Company**

Dave Pijnenburg  
Irrigation Contractor  
75 Codfish Hill Rd., Bethel, CT 06801  
(203) 748-0558

**James Carriere & Sons, Inc.**

7 Cottage St., Port Chester, NY 10573  
Trap Sand - Partac Topdressing-Drainage Stone  
Bill Carriere  
(914) 937-2136

**LESCO, Inc.**

20005 Lake Road  
Rocky River, OH 44116  
Mike Donahue  
(800) 321-5325 FAX (800) 673-3030

**Lofts Seed Company**

68 White Cedar Drive  
Madison, CT 06443  
(203) 421-4641  
(800) 708-8873

**Metro Milorganite, Inc.**

365 Adams Street  
Bedford Hills, NY 10507  
Joe Stahl  
(203) 321-0678 or (860) 663-8048

**Millane Nurseries, Inc.**

604 Main Street  
Cromwell, CT 06416  
Jim Goodrich  
(860) 635-5500 & (860) 526-3991

**NORTHERN Professional Turf Products**

Wholesale Nursery  
West Suffield, CT 06093  
Jeff Rogers  
(860) 668-5225

**Partac Golf Course Top-Dressing**

Great Meadows, NJ 07838  
(800) 247-2326 (908) 637-4191  
Bill Carriere (914) 937-2136  
Joe Bidwell (203) 651-8555

**Pro-Lawn Products**

102 Conklin Road  
Stafford Springs, CT 06076  
Mike Dukette  
(203) 684-6242

**R. F. Morse & Son, Inc.**

West Wareham, MA 02576  
ParEx - KPower - Vertidrain  
Carl Wallace  
(508) 295-1553

**Sawtelle Brothers, Inc.**

21 E. Dudley Town Road  
Bloomfield, CT 06002  
Peter Moran~Dave Brownell~Frank Bava  
(800) 999-TURF

**The Scotts Company**

26 Waite Avenue  
South Hadley, MA 01075  
Rick Forni  
(413) 534-8896

**Shawnmark Industries, Inc.**

Specialty Products & Service  
Warwick, RI 02888  
Matt Howland (24 hours a day)  
(401) 295-1673

**Tee & Green Sod**

P. O. Box 418  
Exeter, RI 02822  
Owen Regan ~ Dave Wallace  
(401) 789-8177

**Terre Company of NJ, Inc.**

206 Delawanna Ave., P. O. Box 1000  
Clifton, NJ 07014  
Byron Johnson, Jr.  
(203) 748-5069

**Toelles Road Sand & Gravel Co.**

Wallingford, CT 06492  
Golf Course Sands & Topdressing  
Hal Kraus  
(203) 284-8552

**Turf Products Corporation**

157 Moody Rd., P. O. Box 1200  
Enfield, CT 06082  
John Ferry ~ Mark Loper  
(203) 763-3581

**Turf Specialty, Inc.**

15 Londonderry Road, Unit 3  
Londonderry, NH 03053-6604  
Dave Schermerhorn  
(603) 437-0008

**Westchester Turf Supply, Inc.**

P. O. Box 198  
Lincolndale, NY 10540  
Bob Lippman  
(914) 248-7476 FAX (914) 248-6862

**White Contractors**

Golf Course Construction & Renovation  
Old Greenwich, CT 06870-0484  
James E. Morris, Jr.  
(203) 869-8808