

# CONNECTICUT CLIPPINGS

Volume 30, No. 4

October, 1996

## President's Message

Philip Neaton  
CAGCS President

This has been a very frustrating year for the board in providing membership services such as the biennial survey and our various social functions. A great deal of time and money go into organizing these events and participation is at an all-time low.

John Napier spent many hours preparing this year's survey with only 37 members responding. This survey is a very expensive and time consuming service to provide our membership especially when so few choose to participate. I would hate to see us discontinue these surveys; but, if we can't get more people willing to share this information, our survey becomes too expensive and incomplete to be worth continuing.

Jud Smith has done a great job organizing a variety of social events this year—only to have very few of our members show up. As one who attends most CAGCS events, I can say that my family and I have always enjoyed ourselves and we look forward to next year. The one thing that would improve any of our social events is to

*(continued on page 2)*

## Connecticut clubs go spikeless

John F. Streeter, CGCS

Clubs across Connecticut are joining the national craze of going spikeless. This fall, it has been reported that in 1997, Connecticut will have a total of eight clubs that will be enforcing the metal spike ban at their courses.

The *Clippings*, along with association events, have promoted and educated our members to the benefits of non-metal spikes on golf courses.

Evidently, the fruits of everyone's labor in this nontraditional endeavor finally began to pay off.

The first club to go spikeless in Connecticut was the Country Club of Darien which just completed its 2nd season. Superintendent, Tim O'Neill, applauds the change; and, after two

years of no metal spikes, the Country Club of Darien is beginning to see the real benefits.

*Country Club of Darien*  
*Oak Lane Country Club*  
*Redding Country Club*  
*Suffield Country Club*  
*Tower Ridge Country Club*  
*Tumble Brook Country Club*  
*Wallingford Country Club*  
*Woodbridge Country Club*

According to my sources, the following clubs have gone or will be going spikeless in 1997: CC of Darien, Tim O'Neill, CGCS, Supt., Oak Lane CC, Larry Dodge, Supt., Redding CC, Dennis Houle, Supt., Suffield CC, Tom Watroba, Supt., Tower Ridge CC, Scott Ramsay, Supt., Tumble Brook CC, Cindy

Johnson, Supt., Wallingford CC, Scott Gennings, CGCS, Supt., and Woodbridge CC, yours truly, Supt.

If there is any other club that I have not listed, please contact the CAGCS office (203/387-0810) so that we may add you to the list of spikeless clubs!

**President's Message**

*(continued from page 1)*

have more of you attend. Our monthly meetings are well attended, so I can't understand why our picnics and parties are not.

We always get positive feedback for our social efforts, yet we can't rival the crowds we get at our monthly meetings. We have tried different locations, themes, and times to attract greater crowds; but, we still have trouble getting more than 50 people (25 members) at any one event.

I would like to be the first to invite you all to attend this year's CAGCS Christmas party on December 14th at the Hawthorne Inn. The Hawthorne is big enough for us to set an all-time attendance record so please make your plans now to join us for dinner and dancing to usher in the Holiday Season.

If anyone has any ideas that would make our social calendar or survey more attractive and improve our participation, please let me know.

**Earthworm dilemma**

James E. Skorulski  
Northeast Region Green Section Agronomist

The unusual wet and cold summer weather experienced this year has increased the surface activity of earthworms on golf courses throughout the northeast. The heavy castings produced by the worms can thin turf and disrupt mowing programs. Surface quality declines as a result. The Green Section Offices in the northeast region are receiving a large volume of calls regarding this issue and the associated concerns of golfers. This letter will attempt to address those concerns.

Normally, earthworm activity is highest in spring and fall when the nights are cool and moist surface conditions are prevalent. However, this year's unusually wet weather has led to an increase in surface activity of earthworms throughout the entire season. Earthworm population on golf courses also seem to have increased since the elimination of more persistent and toxic insecticides. Earthworms are good for soils and they are a sign of healthy soil. They are amazingly effective processors of organic material (thatch) and their activity helps to aerify the soils, improve soil structure and drainage. Unfortunately, heavy worm activity produces castings that interfere with mowing programs and smother and thin the turf. This is especially true when turfgrass growth rates slow. Their increased numbers and the unusual weather conditions have created a management problem this season.

Some pesticides are toxic to earthworms. However, none of these materials are specifically registered for the control of earthworms and, therefore, cannot be recommended or used for that purpose. When applied to control other insects and

*(continued on page 11)*

**C A G C S Board of Directors**

**President**  
PHILIP NEATON  
*Black Hall Club*

**Vice President**  
JOHN NAPIER, CGCS  
*Stanley Golf Course*

**Secretary**  
ANTHONY GROSSO  
*Pautipaug Country Club*

**Treasurer**  
HEATHER L. GARVIN  
*Canton Golf Course*

**Immediate Past President & EIC Rep.**  
PETER R. PIERSON  
*Pequabuck Golf Club*

**Education**  
BRIAN SKELLY  
*Old Lyme Country Club*

**Golf**  
JOHN MOTYCKA  
*Skungamaug River Golf Club*

**Membership**  
SCOTT D. GENNINGS, CGCS  
*Wallingford Country Club*

**Public Relations**  
Gregory Bradley  
*Farmington Woods Country Club*

**S & R**  
GREG STENT  
*Wampanoag Country Club*

**Social & Welfare**  
JUD W. SMITH  
*Orange Hills Country Club*

**Commercial Rep. to Board**  
ARTHUR deATIENZA  
*P.I.E. Supply Company*

**CAGCS Office**  
P. O. Box 3678  
Woodbridge, CT 06525  
Telephone & Fax Nos.  
(203) 387-0810

*Connecticut Clippings* is an official publication of the Connecticut Association of Golf Course Superintendents.

**Newsletter Editor**  
John F. Streeter, CGCS

**Committee**  
Anthony Grosso  
*Pautipaug Country Club*  
~and~  
Thomas Watroba  
*Suffield Country Club*

**Photos**  
David Basconi

# G C S A A

## More water quality data needed for study

The GCSAA Foundation is funding Dr. Stuart Cohen to conduct the "Golf Course Water Quality Study." This study is an attempt to compile available information from surface and ground water monitoring projects that have been, or are currently being conducted on golf courses.

This study may have a very strong effect on regulators and environmentalist concerning golf courses; effects on surrounding aquatic ecosystems and ground water quality.

GCSAA's golf course water quality study has received a number of responses—especially from golf courses

in eastern and southeastern states—to requests for the results of water quality monitoring projects, reports Amy Svrjcek, the project coordinator for Environmental & Turf Services, Inc. of Wheaton, MD. However, more responses are needed.

If your golf course has conducted, or if you know of golf courses that have conducted water quality monitoring for surface water or ground water, GCSAA would like to use that information in the Golf Course Water Quality Study. Please contact Amy Svrjcek at: (301) 933-4700.

The government relations office of GCSAA has reported that the pesticide industry is celebrating the passage of the Food Quality Protection Act, H.R. 1627 (also called the food safety bill). The FIFRA legislation repealed the "Delaney Clause," a law from the 1950s that set a zero tolerance for detectable cancer-causing food additives.

Carol M. Browner, Administrator, U.S. Environmental Protection Agency states that "The new legislation greatly strengthens current law by replacing a fragmented system with a single, more protective comprehensive health-based standard for all foods".

The change provides much-needed relief from this onerous law for manufacturers and provides a more science-based regulatory system for pesticides.

The bill also requires EPA to give attention to the greater susceptibility of children to toxins when testing for safety. H.R. 1627 passed both houses of Congress in late July and was signed by President Clinton on August 3rd.

As an exhibitor at the National Conference of State Legislatures July 27-30 in St. Louis, GCSAA representatives spoke to many state legislators and their staffs about the issues that affect golf course superintendents, and the association's ability to serve as a reliable source of information on those matters.

**METRO MILORGANITE, INC.**  
For a HEALTHY ADVANTAGE over SEASONAL PROBLEMS WE OFFER a WINNING LINE-UP










**GOLF COURSE SUPPLIES**  
Rick Appgar    Scott Appgar    Joe Stahl  
(914) 666-3171    Fax (914) 666-9183  
365 Adams Street, Bedford Hills, NY 10507

**DEPEND ON US FOR FOUR SEASON SOLUTIONS**



**(800) 243-7582**

**Greens Quality Bentgrass**  
Bent Blends for Tees and Fairways  
Poa Annua Free

4-Foot Wide Rolls  
Washed Sod

Low-Cut Rye-Blue  
High Fine Fescue  
Versaturf - Blue-Fescue-Rye

Installation Assistance  
Farm Inspection Welcomed

## CAGCS joins the RIGCSA in co-hosting 2nd annual turfgrass show & conference

As we have previously reported, CAGCS has joined forces with the RIGCSA in co-hosting The Rhode Island Turfgrass Show & Conference which will be held December 3-5 at the Rhode Island Convention Center in Providence, RI.

There will be over 200 turf-related booths. Meet professionals in the many phases of turfgrass management and see the latest in equipment, turf care products and supplies.

Pesticide applicators recertification credits are offered for all New England states as well as New York and New Jersey.

The educational seminars will begin on Tues., Dec. 3 and run through Thurs., Dec. 5, which will include various topics being covered by Dr.

Joe Vargas, Michigan State Univ.; Dr. Eric Nelson, Cornell Univ.; Dr. Peter Landschoot, Penn State Univ.; Dr. Steven Alm, URI; Dr. Richard Cooper, NC State.

You must register by Nov. 8 to receive advance rates, but there will be on-site registration.

The keynote speaker features Dr. Robert Payne, USDAE, Director of Agrostology who, throughout the past three decades, has earned accolades and respect from his peers and colleagues. He promises to give a candid and enlightening review of the latest proposed environmental regulations as well as what he perceives to be the trends for the future in fine turfgrass management.

### Pre-Show GCSAA Seminars

December 2 & 3  
8:00 a.m. - 5:00 p.m.  
*Basic Principles of  
Turfgrass Management*

December 3  
8:00 - 3:00 p.m.  
*Reel Mowers Technology and  
Sharpening Implementation*

Register for these Pre-Show Seminars directly with GCSAA (800/472-7878).

For more information, please contact The Show Office (401/847-7666)

## Tee & Green & In Between

Whether your challenge is a deadline, a tee, a green, a fairway, a rough, or a bunker surround, we have a blend that fits your needs.

We understand the variety of problems you face because we have spent a great deal of time listening to golf course superintendents. As a result, Tee & Green Sod offers the most complete product line



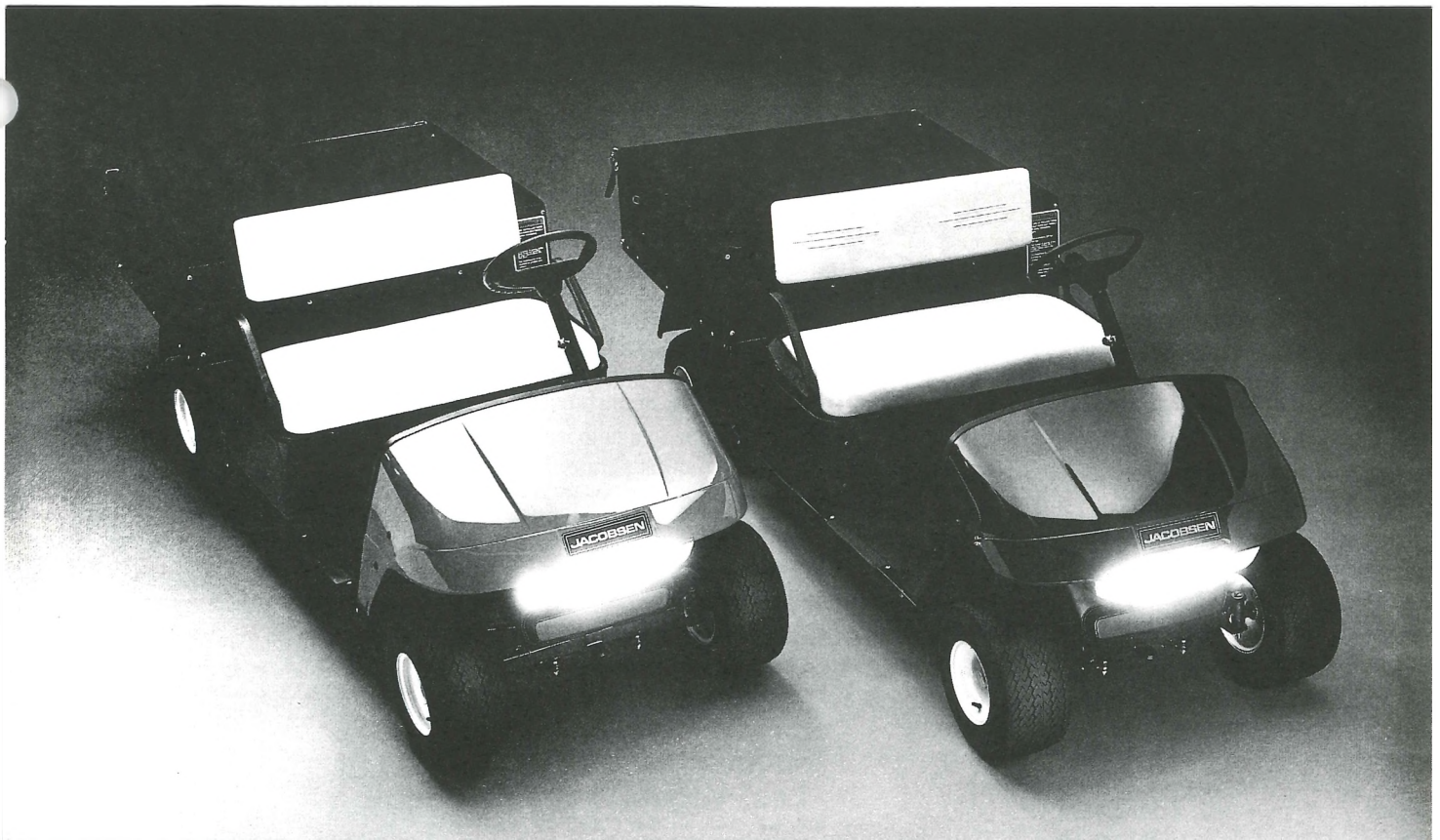
**TEE &  
GREEN SOD**  
— INCORPORATED —

available to the golf course industry—  
even a four-foot wide washed roll!

Give us a call for information about  
our selection of products, and our unique  
harvesting and washing techniques.

- Bentgrass
- Bluegrass
- Washed sod
- Bluegrass-Ryegrass
- Bluegrass-Fine Fescue

401/789-8177 • 401/789-3895 (fax) • PO Box 418, Exeter, RI 02822



The facts are here in black and white. Not to mention classic orange and tournament green.



Jacobsen's 1110 Hauler™ gives you more horsepower, more cargo space and more colors. For starters, you get an 11 hp, 350 cc, twin cylinder gas engine. Add to that 13.3 cubic feet of cargo space and removable side panels. Plus, a roomier operator compartment and a longer, 77-inch wheelbase for more stability and a smoother ride.



Of course, you can also choose Classic Jacobsen Orange or our new Tournament Green. See your Jacobsen distributor for a demonstration today.

THE PROFESSIONAL'S CHOICE ON TURF.

**JACOBSEN  
TEXTRON**

Jacobsen Division of Textron Inc.

**SAWTELLE BROTHERS** 

65 Glenn Street  
Lawrence, MA 01843  
(508) 682-9296

21 E. Dudley Town Road  
Bloomfield, CT 06002  
(860) 769-6096

1-800-999-TURF



**New Members**

Paul Bell - Class B  
*Quarry Ridge*

Joe Cornicelli - Class C  
*A-OK Turf Equipment*

Kevin Kelley - Class A  
*Portland Golf Club*

Brandon Schick - Class A  
*Golf Club of Avon*

Richard Schock, Jr. - Class A  
*Wee Burn Country Club*

Raymond Velleco - Class B  
*H. B. Brownson Country Club*

Brian Whitcher - Class B  
*Madison Country Club*

.....

**Did you know** that in 1940 the first GCSAA office was above a Chicago-area tavern? Previously, the office had been in the homes or the golf course offices of elected leaders. GCSAA turned 70 in September.

**Tom Watroba**, superintendent at Suffield CC, made a hole in one while playing with his partner, John Callahan, in the annual New England Autumn Classic at Queeche, VT.

Congratulations, Tom! I'm sure it was worth a few skins!

.....

**Room Block Las Vegas**

The deadline to register for a room in the CAGCS block at Bally's was October 1st. However, GCSAA has advised that if there is anyone who still needs a room you are to call GCSAA Travel directly (203/772-0470). Indicate that you are a member of the CT Chapter.

.....

The **Superintendent of the Year** ballots will be mailed to all voting members in mid November. Please take time to vote and mail in your ballot.

**Calendar of Events**

November 5  
CAGCS Annual Meeting  
Suffield Country Club  
Thomas Watroba, Host Supt.

**GCSAA Seminars**

*Drainage Systems*  
November 7  
New Brunswick, NJ  
&  
November 12  
Rochester NY

*Preconstruction and Construction Management*  
November 13 & 14  
Bolton, MA

*Plant Nutrition & Fertilizers*  
November 18 & 19  
Long Island, NY  
Register for these seminars directly with GCSAA (800/472-7878)

December 14  
CAGCS Christmas Party  
Hawthorne Inn  
Berlin, CT  
(see last page for details)

January 7, 1997  
CAGCS Winter Seminar  
Ramada Inn  
Meriden, CT

**WHITE CONTRACTORS**  
GOLF COURSE CONSTRUCTION & RENOVATION

Thomas A. White  
James E. Morris, jr.  
203-869-8808  
914-234-0092  
P.O. Box 484  
Old Greenwich, CT  
06870-0484

Consistently High Quality    Competitive Prices    Prompt Delivery

**CONNECTICUT MULCH DISTRIBUTORS, INC.**  
KEN LINDELAND

WOOD CHIPS - BARK - LANDSCAPE TIES

Business Address 1300 East St. Suffield, CT. 06078	Mailing Address 1515 North Stone St. W. Suffield, CT. 06093	Telephone (203) 623-2987 Fax 292-1047
--	---	---

**In Memoriam — Everett J. Pyle, Sr.  
CAGCS member since 1937**

Everett J. Pyle, Sr., a CAGCS member since 1937, died on August 7, 1996. Born in Plymouth, MA, he lived in Hartford for 34 years moving to Suffield in 1977. He was a graduate of the University of Massachusetts, Class of 1927, with a B.S. degree in Landscape Architecture. Everett was employed by the City of Hartford for 34 years retiring in 1969 as Director of the City's Parks & Recreation.

Everett began his career as a greenkeeper in the State of Rhode Island. In 1935, he moved to Hartford to take a position under the Park Commission. Here he had charge of construction of nine new holes and revised the nine established holes at, what I am assuming to be, Keney Park Golf Course.

He was past president of the New England Park Association; past president of the Rhode Island Horticultural Association; past president of the Rhode Island Greenkeepers Association; and he served as CAGCS' 9th president during the years 1944 and 1945.

Besides his wife, Grace, he leaves a daughter, a son, a sister and three grandchildren. The family has asked that donations be made in his name to the American Cancer Society, 670 Prospect Ave., Hartford, CT.

**PARTAC®**  
GOLF COURSE  
TOP-DRESSING



AMERICA'S PREMIUM  
HEAT TREATED  
TOP-DRESSINGS

**TYPAR®**  
GEOTEXTILES & TURF BLANKETS

U.S. GOLF HOLE  
**TARGETS™**  
AND MUCH MORE!

**800-247-2326**  
DISTRIBUTED IN CT BY:  
JAMES CARRIERE & SONS  
**914-937-2136**  
VALLEY FARMS SUPPLY  
**203-651-8555**



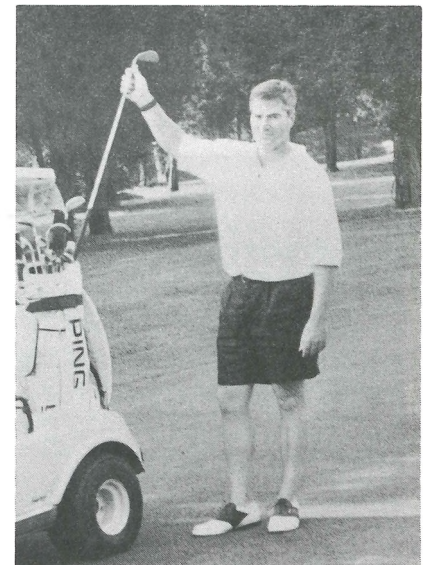
-----

*Madison Country Club*, Mike Chrzanowski, supt. (pictured left) was the host of our July meeting on the 16th. The tournament of the day was best ball of foursome, with 93 participants. The gross prize was won by Scott Niven, Greg Stanley, Larry Pakkala and Richard Schock with a 66. The net prize was won by Steve Rackliffe, Al Adaskaveg, Mike Dukette and Scott Ramsay with a round of 53. The Hot Ball net winners were Steve Roberts, Jeff Rogers, John Kotoski and Cindy Johnson with a 70.

Closest to Pin #2 - Rick Schock; #9 - Tim Gerzabek Longest Drive - John Gallagher, III  
Closest to Line - Tim Gerzabek Long Putt #1 - John Callahan; #18 - John Napier  
Kickers - K. Parkin, M. Zebora, B. Lohrman, J. Patridge

-----

On October 7th, we were guests of *Clinton Country Club*, Michael Decker, supt. (pictured below right) for our annual Superintendent/Assistant Tournament. The team of Pequabuck Golf Club - Peter Pierson & Bob Douglas, took home low gross. First low net was won by Fenwick Golf Club, Kimberly Heyl & Dave Caffrey (58); second low net was won by Rockledge Country Club, Al Adaskaveg & Rick DeBella.



Because our September meeting at Pautipaug Country Club had to be canceled due to heavy rain, the tournament for our President's Cup and McLaughlin Trophy were also played at Clinton on October 7th.

Congratulations to Mike Dukette for firing a 74 to bring home the President's Cup (low gross score) and to Michael Decker, our host superintendent, who took home the McLaughlin Trophy (low net score) with a round of 65.

Congratulations to all winners!



**Country Club of Waterbury captures  
CAGCS 1996 Invitational**

by John F. Streater, CGCS

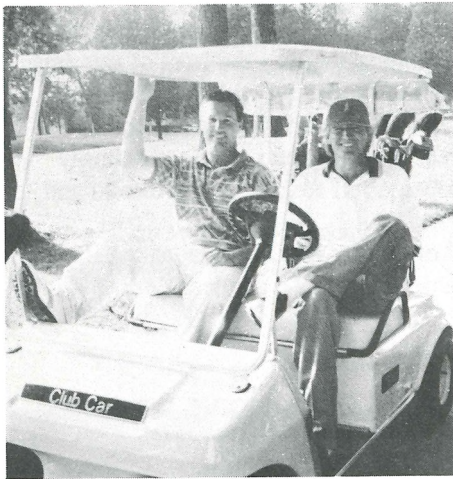
On September 10th, the team from the *Country Club of Waterbury* captured the annual CAGCS Invitational Tournament. The team of **Les Kennedy, Jr., Bill Cremins, Harry Cashin and Tom Gleeton** (pictured left) fired a best ball of 64. Aside from winning the low gross trophy, CC of Waterbury's pro, Tom Gleeton, won the low pro prize by matching cards with the pro from Clinton Country Club, Kris Smith, with fine scores of 69.

The team from Banner Resort & Country Club comprising of Mark Chevrier, Victor Busseli, Tom Veece and John Barbieri captured the low net prize for the day shooting a 57.

Other low net prizes were won by matching cards and congratulations go to the Black Hall Club, Phil Neaton, Supt., Clinton Country Club, Mike Decker, supt., and The Farms Country Club, Paul Sabino, supt.

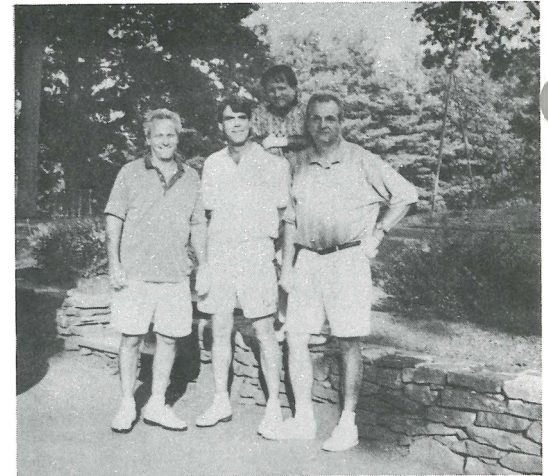
Unfortunately, no one got a hole in one on the 6th hole which would have awarded a cash prize of \$10,000. There were also bonus prizes up for the winning for holes in one on the 3rd, 8th and 17th holes for prizes of a Bahamas Cruise, Airline tickets for two, and a Seiko Watch.

After a comfortable round of golf, all attendees were treated to an extravagant buffet reception.



← Greg Bradley (L) with Club Pro, Rick Churchill - Farmington Woods CC

Team from Banner → Resort & Country Club, Mark Chevrier, supt. (Low net winners)



← Steve Rackliffe, Willimantic CC (Are you looking for a pencil with an eraser?)

Team from The → Farms CC, Paul Sabino, supt.







The 1996 Scholarship & Research Tournament was held on October 1st at the Black Hall Club. Host superintendent, Phil Neaton, (pictured above) and his staff had the course in perfect condition. The traditional Scramble format proved to be an enjoyable way to play the tough Black Hall layout. The greens were firm and fast, requiring skillful shot-making and dead-eye putting strokes.

Golf Pro Tim Gavronski and his staff did a great job, ensuring that the tournament went off without a hitch. Mother Nature certainly cooperated by giving us a beautiful Autumn day.

The tournament was also successful in raising funds that support helpful scholarships and needed research. When the final tally is in, the amount of money raised for the day will approximate \$6,000 - \$7,000.

Everyone who participated in the tournament contributed to its financial success.

The S & R Committee wants to thank all the players for their participation, along with a great deal of thanks to some special contributors:

**Ron Holcomb** and **Chas. C. Hart Seed Co.** for their donation of \$1,000 derived from the sales of Merit Insecticide; **Tom Gleton**, the golf pro from the Country Club of Waterbury, for his donation of \$400 derived from a golf marathon held at his club. Generous, personal contributions

## Another successful year for CAGCS Scholarship & Research

Greg Stent, 1996 S & R Chairperson

were made by CAGCS members **William Hamm, Jr. & Dave Pijnenburg of Greenacres Co.**

All of the Tee Sign Sponsors showed their support and generosity with \$2,300 being raised for our cause—thank you to:

AgrEvo  
Anderson Turf Irrigation, Inc.  
Arbor Care, Inc.  
Bruedan Corp.  
CAGCS Board of Directors  
Cadwell & Jones, Inc.  
The Cardinals, Inc.  
Chas. C. Hart Seed Co.  
D & S  
Fairway Landscapers  
Glenmore Landscape Service  
Greencycle of the Northeast, Inc.  
Lesco  
Lofts Seed, Inc.  
Metro Milorganite  
Pro-Lawn Products  
Robert Baker, Inc.  
Sawtelle Brothers, Inc.  
Shawnmark Industries, Inc.  
Tee and Green Sod, Inc.  
Terre Co. of New Jersey, Inc.  
Turf Products Corporation  
White Contractors

The sale of raffle tickets is a contribution to the success of our tournament/fund raiser. **Al Adaskaveg** and **Rockledge** golf pro **Rich Crow** for the donation of a Tommy Armour driver that was raffled off. The rounds of golf donated by some of the finest courses in and around Connecticut were astounding. They will be truly enjoyed by the raffle winners and very much appreciated by the S & R Committee:

Birchwood Country Club  
Country Club of Farmington  
Country Club of New Canaan  
Country Club of Waterbury

Crestbrook Park Golf Club  
Ellington Ridge Country Club  
Greenwoods Country Club  
Hop Meadow Country Club  
Indian Hill Country Club  
Oak Ridge Golf Club  
Orange Hills Country Club  
Pautipaug Country Club  
Pine Orchjard Yacht & CC  
Portland Golf Course  
The Stanwich Club  
Tower Ridge Country Club  
Wampanoag Country Club  
Woodbridge Country Club  
Woodway Country Club

In order for a large tournament/fund raiser to run smoothly, many people must dedicate time and effort to the event. I owe special thanks to these people for their assistance at Black Hall:

**Peter "the Pest" Cure** strong-armed everyone into buying raffle tickets. The \$1,680 is surely an S & R record! **Brian Pope of Turf Products Corp.** supplied the roving kegs of beer on the course for all the thirsty competitors. **Frank Sava-kis of Breudan Corp.** provided two awesome utility vehicles as "Hole-in-One Prizes. He figured it was a pretty safe bet.

**John Motycka** ran the check-in desk with **Pauline Streeter** and the two of them handled the rowdy participants with ease.

**Mike McDermott** was responsible for handling and assembling all of the sponsor tee signs. This task required Mike to arrive early and stay late and his effort is much appreciated.

**Heather Garvin** was a constant help in the period leading up to the tournament and was there to assist on tournament day. I sought advice from Heather many times and she was more

(continued on page 10)

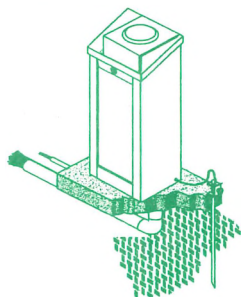


**LEGACY™**  
GOLF IRRIGATION

**A Complete Line of Innovative, Rock-Solid Golf Irrigation Equipment.**

The Legacy Radio Genesis Central Control System will let you stand alone. It includes the following features:

- Complete programmable satellite
- Non-dedicated radio programming
- Hand-held operations through computer
- Two-way communication
- Stealth Antenna



Main Office: 243 Woodmont Road • P.O. Box 3049  
Milford CT 06460 • (203) 878-0658

**P.I.E. SUPPLY CO.**  
PIPE & IRRIGATION  
EQUIPMENT SUPPLY COMPANY

**Scholarship & Research**

(continued from page 9)

than willing to do whatever she could to help.

I would like to personally thank our office staff, **Pauline Streeter** and **Mary Jo Kennedy**, for their help. Anyone who has had the pleasure of working directly with Pauline or Mary Jo knows how professional, efficient and thorough they are. Both are great assets to our organization.

As far as tournament results go, the perennial winners rode the drives of Peter Bacon, the sharp iron play of Jim Staszowski, the consistency of Peter Cure and the exuberance of Al Adaskaveg to a two-shot victory in the gross category.

Low net went to Ken Modzelesky, Sean Flemming, Dick Hopwell and Mono Strycharz (the man with no vowels). Of the six skill prizes up for grabs, the 360-yard smash of Mike "Pile-Driver" Decker was most memorable. He almost drove the ball back to his home course in Clinton!

Again, thanks to all who participated and congratulations to Phil Neaton and his crew for providing spectacular playing conditions on his beautiful course.

I would also like to thank all who supported S & R throughout the year by purchasing raffle tickets at our monthly meetings.

**Golf Results**

1st Gross - 60	2nd Gross - 63
Jim Staszowski	Greg Stent
Peter Cure	Skip Pons
Al Adaskaveg	Ivan Biostrup
Peter Bacon	Matt Quintana

1st Net - 57.7	2nd Net - 57.8
Ken Modzelesky	Les Kennedy, Jr.
Mno Strycharz	Mike McDermott
Sean Flemming	Dennis Houle
Dick Hopwell	Pat Cragin

3rd Net - 58.9	4th Net - 59.1
Skip Deubel	Anthony Grosso
Mark Armstrong	Mike Dukette
Steve Donahue	Bruce Morse
Al Laprise	Mike Decker

Our skill prizes were sponsored by AgrEvo, Agriturf, Lofts Seed, Metro Milorganite and R. F. Morse.

Longest Drives #2 - Mike Decker; #11 - Mark Powers

Closest to Pins #7 - Jim Staszowski 6' 11"  
#9 - Mono Strycharz 5' 1"; #13 - Bruce Carlson 2' 1"  
#17 - Dick Garret 6' 4"

**Sterilized Top Dressing**

especially formulated for your area to specifications recommended by leading universities and testing laboratories.

**EXCLUSIVE WITH EGYPT FARMS:** All materials are thoroughly mixed and sterilized by indirect heat in our special process. The sand particles are actually coated with a mixture of top soil and peat humus for completely homogenous mixture that will not separate during handling and spreading.

**COMPUTERIZED BLENDING** of soil mixtures for a superior growing medium.

**CUSTOM ON-SITE SOIL BLENDING AND TESTING** with a portable computerized blender.

Green and Tee construction materials and mixes conforming to your specifications are also available.



**Egypt Farms**  
P.O. Box 223  
White Marsh, MD 21162  
(410) 335-3700

**IBDU® and Par ex®**  
PROFESSIONAL PRODUCTS

- Bunker Sand • Sphagnum Peat
- Turf Seed

**sof'n-soil**  
LAWN & GARDEN GYPSUM

**Alintex**

PROFILE  
TURFACE

**woodace**  
LANDSCAPE & ORNAMENTAL  
FERTILIZER

**R & R**  
GUARANTEED  
REPLACEMENT PARTS

**AMPEL Milorganite®**  
ORGANIC FERTILIZER

**Futerra**

**Shaw's**  
PROFESSIONAL  
TURF FERTILIZERS

**AQUA-AID**  
WETTING AGENT

**AQUA-R**  
BIO-STIMULANT  
ROOT ENHANCER

the  
**PROPORTIONER  
SYSTEM™**

**LO-DOSE  
INJECTOR SYSTEM**

**CONTECH**  
CONSTRUCTION PRODUCTS INC.  
**TerraBond TerraFlow**  
WINTERGREEN

**CAGCS  
preparing  
a memorable  
Christmas Party**



**Mark your  
calendar!**

**December 14th**



Mark your calendar for Saturday night, December 14th, for CAGCS' 1996 Christmas Gala.

It will be held at the newly renovated grand ballroom of the famous Hawthorne Inn which is known for its fine cuisine. The Hawthorne is centrally located in Berlin, CT, for easy access for all members.

CAGCS has blocked 20 deluxe rooms at the Inn for the convenience of our members who choose to stay



**THE CRESCENTS  
ROCK 'N ROLL SHOWBAND**

overnight at the rate of \$68. The rooms will be held until December 1st.

The highlight of the evening will be a stroll down memory lane with *The Crescents*, one of the northeast's most renowned 50s & 60s rock & roll show bands. They have shared center stage with fellow time travellers, "The Drifters", "Danny and the Juniors", "Chuck Mangione" and "Blood, Sweat & Tears."

They have also been a featured act at the Big E and on Love Boat cruises.

The appeal of *The Crescents* is universal. We invite you and your guests to spend an unforgettable evening with fellow CAGCS members.

The ticket price will remain the same at \$50 per person, as the entertainment for the evening is being sponsored by Pro Lawn, Turf Products, Sawtelle Bros, Tee & Green Sod, and Winfield Nurseries.

**Earthworms** (continued from page 2)

fungal pests, these materials will provide some indirect control of earthworms, though only for a short time. Thus, the best option for minimizing earthworm effects involves modifying cultural practices. Increasing turfgrass vigor by boosting fertility slightly will help the turfgrass maintain a growth rate that can offset the castings accumulating on the surface.

Raising mowing heights slightly may also improve surface conditions where earthworm activity is high. Mowing after the turf and castings have dried, or whipping or dragging the surfaces

prior to mowing, will help to disburse the castings more evenly over the surface. This will also reduce surface disruption and the damaging effects to mowing equipment, but it may be difficult to accomplish on busy golf courses where play interferes with such operations.

There are no easy solutions to managing earthworms on golf courses. Modifying mowing practices and increasing fertility applications probably offer the best solutions for coping with the earthworms when they are most active in spring and fall.

Remember, earthworms are very good for the soil and are the sign of a well-balanced system. Their presence should naturally diminish following several hard frosts. Hopefully, research programs will soon find safe solutions to this problem that is affecting more golf courses each season.

Do not hesitate to contact the USGA Green Section offices in Palmer, MA, (413/283-2237) or Easton, PA (610/151-1660) if there are any additional questions concerning this issue.

*CAGCS thanks these patrons for their continued support of our Association!*

**A-OK Turf Equipment**

Articulator Dealer  
Coventry, RI 02816  
Michael D. Cornicelli  
(401) 826-2584

**AgrEvo USA Company**

2711 Centerville Road  
Wilmington, DE 19808  
David J. Sylvester  
(860) 828-8905

**Agriturf, Inc.**

59 Dwight St.  
Hatfield, MA 01038  
Jim Wierzbicki (800/346-5048)  
Kyle Kordas (800/346-5048)

**ALPINE, the CARE of TREES**

Excellence in Tree Care  
Ridgefield (431-4100)  
Westport (222-5595) Norwalk (847-1855)  
Greenwich (661-8014) Darien (655-8008)

**Anderson Turf Irrigation, Inc.**

5 Cronk Rd., P. O. Box 7036  
Plainville, CT 06062  
Jesse J. Anderson, Jr.  
(860) 747-9911

**Bruedan Corp. of Connecticut**

E-Z-GO & YAMAHA  
GOLF, TURF & UTILITY VEHICLES  
Scott O. Lowe ~ Frank Savakis  
(800) 773-6740

**The Cardinals, Inc.**

166 River Road  
Unionville, CT 06085  
John Callahan  
(860) 673-3699

**The Chas. C. Hart Seed Co.**

P.O. Box 9169, 304 Main Street  
Wethersfield, CT 06129-0169  
R. Sibley ~ R. Holcomb ~ P. Bednarczyk  
(860)529-2537 & (800)326-HART

**C. R. I. S.**

923 Woodtick Road  
Wolcott, CT 06716  
Chris Carney  
(203) 879-2362

**D & S**

Floratine Products, Nova Tee  
Flymo, Douglas Rollers, Trion Lifts  
Dave Basconi  
(203) 250-TURF

**Doering Equipment Co.**

162 Grove St., Franklin, MA 02038  
Rod Cooper, Don Doering, Mark Doering  
(508) 520-3629 & (860) 276-8188  
John Deere Agrimeatal & Others

**Earth Works, Inc.**

Custom Deep Aerification Service  
Old Greenwich, CT 06870  
Patrick Lucas, CGCS ~ Eric Azars  
(800) 815-1113 FAX (203) 698-1920

**Eastern Land Management, Inc.**

Golf Course Construction Services  
Stamford, CT 06902  
Bruce T. Moore, Sr., CCLP  
(800) 926-GREEN

**Fairway Landscapers, Inc.**

Golf Course Construction  
So. Glastonbury, CT 06073  
Walter C. Varni  
(860) 633-1273

**Glenmore Landscape Service**

98 Hack Green Road  
Pound Ridge, NY 10576  
Glenn S. Moore  
(914) 764-4348

**Greenacres Company**

Dave Pijnenburg  
Irrigation Contractor  
75 Codfish Hill Rd., Bethel, CT 06801  
(203) 748-0558

**James Carriere & Sons, Inc.**

7 Cottage St., Port Chester, NY 10573  
Trap Sand - Partac Topdressing-Drainage Stone  
Bill Carriere  
(914) 937-2136

**LESCO, Inc.**

20005 Lake Road  
Rocky River, OH 44116  
Mike Donahue  
(800) 321-5325 FAX (800) 673-3030

**Lofts Seed Company**

68 White Cedar Drive  
Madison, CT 06443  
(203) 421-4641  
(800) 708-8873

**Metro Milorganite, Inc.**

365 Adams Street  
Bedford Hills, NY 10507  
Joe Stahl ~ Scott Apgar  
(203) 321-0678 or (860) 663-8048

**Millane Nurseries, Inc.**

604 Main Street  
Cromwell, CT 06416  
Jim Goodrich  
(860) 635-5500 & (860) 526-3991

**NORTHERN Professional Turf Products**

Wholesale Nursery  
West Suffield, CT 06093  
Jeff Rogers  
(860) 668-5225

**Partac Golf Course Top-Dressing**

Great Meadows, NJ 07838  
(800) 247-2326 (908) 637-4191  
Bill Carriere (914) 937-2136  
Joe Bidwell (203) 651-8555

**Pro-Lawn Products**

102 Conklin Road  
Stafford Springs, CT 06076  
Mike Dukette  
(203) 684-6242

**R. F. Morse & Son, Inc.**

West Wareham, MA 02576  
ParEx - KPower - Vertidrain  
Carl Wallace ~ Chris Cowan  
(508) 295-1553

**Sawtelle Brothers, Inc.**

21 E. Dudley Town Road  
Bloomfield, CT 06002  
Peter Moran~Dave Brownell~Frank Bava  
(800) 999-TURF

**The Scotts Company**

26 Waite Avenue  
South Hadley, MA 01075  
Rick Forni  
(413) 534-8896

**Shawnmark Industries, Inc.**

Specialty Products & Service  
Warwick, RI 02888  
Matt Howland (24 hours a day)  
(401) 295-1673

**Tee & Green Sod**

P. O. Box 418  
Exeter, RI 02822  
Owen Regan ~ Dave Wallace  
(401) 789-8177

**Terre Company of NJ, Inc.**

206 Delawanna Ave., P. O. Box 1000  
Clifton, NJ 07014  
Byron Johnson, Jr.  
(203) 748-5069

**Toelles Road Sand & Gravel Co.**

Wallingford, CT 06492  
Golf Course Sands & Topdressing  
Hal Kraus  
(203) 284-8552

**Turf Products Corporation**

157 Moody Rd., P. O. Box 1200  
Enfield, CT 06082  
John Ferry ~ Mark Loper  
(203) 763-3581

**Turf Specialty, Inc.**

15 Londonderry Road, Unit 3  
Londonderry, NH 03053-6604  
Dave Schermerhorn  
(603) 437-0008

**Westchester Turf Supply, Inc.**

P. O. Box 198  
Lincolndale, NY 10540  
Bob Lippman  
(914) 248-7476 FAX (914) 248-6862

**White Contractors**

Golf Course Construction & Renovation  
Old Greenwich, CT 06870-0484  
James E. Morris, Jr.  
(203) 869-8808