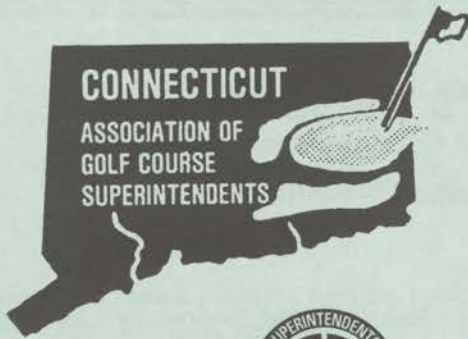


*JB*



# CONNECTICUT CLIPPINGS

Volume 35, No. 3

July, 2001

## Turf Industry Rallies Support

By Anthony Grosso

On March 24th Tom Pelletier, golf course superintendent at Richter Park Golf Course, succumbed to Melanoma after a long battle. He was a great friend and will be dearly missed by all who knew him.

Tom was a dedicated superintendent and a devoted family man. The three most important things in his life were his wife, Amy, and his two sons, Sam (age 12) and Peter (age 10). It was once said that a



man's wealth is judged not by the money in his pocket, but rather by the number of friends he has. If that's true, then Tom was a very wealthy person.

This article is not intended to be a eulogy, but instead a tribute and a thank you to everyone who came for-

ward and contributed in one way or another to help put together a Memorial Tournament and make it such a success.

On May 10th, CAGCS, along with

Richter Park Golf Course, held a Memorial Tournament to benefit Tom's wife, Amy, and their two boys. The tournament was held just six weeks after Tom's passing and everyone who has ever put

together a tournament knows the difficulties and time constraints we faced in putting this tournament together with so little time.

The tournament committee made up of Jud Smith, Orange Hills CC, Paul Sabino, The Farms CC, Bob Silva, Shuttle Meadow, Bruce Morse,

Norwich GC, Peter Pierson, Pequabuck GC, Mike Dukette, Lesco, and myself, plus our CAGCS staff, Pauline Streeter and Mary Jo Kennedy (without these two, we would not have been able to pull this off) worked extremely hard and did an outstanding job of getting everything done in such a short time period.

We began by sending out three letters. The first was the tournament announcement which went out to every CAGCS and METGCSA member along with a form for making a personal donation to the Tom Pelletier Children's Fund (for those not able to play in the tournament).

The second letter went out to all our commercial members asking for their support as a tee sponsor for \$200.

The third letter was sent to the attention of every golf club president, manager and owner in our association along with anyone who has advertised in our newsletter also asking for support as a tee sponsor. Our committee also contacted four of our larger commercial members, Lesco, R. F. Morse, Turf Products Corp., and Sawtelle Bros., asking them if they would be willing to sponsor a closest-to-the-pin contest for \$500 each which they all readily agreed to do.

*(continued on page 4)*



*Brian Skelly*  
CAGCS President

## President's message

Brian Skelly, President

and humid that we will see.

During this time of year when we are all running around like crazy, dealing with all the problems that pop up, remember to step back and take a break. Take some time and do something different. Spend some time with your family, go to the beach, go fishing, take in a ball game, lay back and do nothing. Take some time off.

You will be amazed at how many jobs or problems that are not emergencies can be let go for a day or two and not become any worse. If you run yourself ragged and burn out, then you have not helped yourself or your club.

A good day to plan on taking off is our annual CAGCS family day scheduled for August 15th at the Madison Surf Club. There, you can relax, catch some rays, swim, play with your kids, eat, drink and be merry — and if you can't help it, talk shop!

The Social & Welfare Committee chaired by Wayne Urban has a great day planned, and the caterer hired for the day is second to none—from experience, as it is the same one we used last year. Great food is served all day long.

May had us going back to the Black

Hall Club. Phil Neaton again had the course in great shape for a spectacular sunny day, if only he could have stopped the wind.

June saw us playing the Connecticut Golf Club. Mark Fuller had the course in great shape considering that 4+ inches of rain fell the night before. There were some changes from when I worked there, but they have only improved the course.

On July 10, we are going to Hop Meadow Country Club for the annual CAGCS Invitational Tournament, being hosted by Michael Wallace, CGCS. On July 23, we head out to The Farms Country Club, Paul Sabino, our host superintendent, for our regular July meeting.

I would like to take this time to thank Anthony Grosso and his committee for a great job setting up and running the Memorial Tournament for Tom Pelletier's family. Thanks to Richter Park for all their help also. It was nice to see everyone band together and try to help our a fellow member and his family. Great job!

I can't believe that it is already time to think of the National GCSAA Conference & Show again. However, the forms for the room block at the headquarters hotel in Orlando have been requested from GCSAA. We will get the information out when it becomes available.

With the celebration of the 75th anniversary and our own Michael Wallace being elected GCSAA's 76th President, plan on attending the 2002 Conference & Show in Orlando, FL.

Finally, it is time to start thinking

How was that for a quick season?

First, we have a month of record warmth, no moisture, then tons of rain and cold at the end of May to the beginning of June. When did Old Lyme become Seattle?

With the wind coming in off the cold water most of the spring, it feels more like early November than early June. At times like this, the shoreline is not necessarily the nicest place to be, let alone play golf, as those who played at Black Hall found out.

When the weather does return to normal (that word again), we will be in the *Hundred Days of Hell*. So, look at the bright side—for every cool day we have, it is one less day of hot

### CAGCS Board of Directors

President - Brian Skelly  
Vice President - Jud W. Smith  
Secretary - Dennis J. Houle  
Treasurer - Les Kennedy, Jr., CGCS  
Past President - Anthony Grosso

### Committee Chairpersons

Education - Kim Heyl  
Golf - John Motycka  
Membership - Dan Rackliffe, CGCS  
Scholarship & Research - Christian P. Mauro  
Social & Welfare - Wayne C. Urban  
Government Relations - Peter R. Pierson  
Com. Rep. to Board - Skip Deubel

*Connecticut Clippings* is an official publication of the Connecticut Association of Golf Course Superintendents

Newsletter Editor  
Bob Chalifour, CGCS (Ret.)

Newsletter Committee  
David Basconi, John Garcia,  
Heather Garvin, Edward Goodhouse,  
Mike Mooney, Ron Holcomb  
and Jud W. Smith

The *Clippings* is open to all commentary.  
Send your comments to Bob Chalifour,  
Newsletter Editor, 39 First Street,  
Groton, CT, 06340.

CAGCS Office, P. O. Box 3678, 27 Lucy Street, Woodbridge, CT 06525  
Tel: 203/387-0810 ~ Toll Free: 888/561-7778 ~ Fax: 203/387-7866  
E-Mail: cagcs@noreaster.net

**Step back and take a break!**

*Annual CAGCS family day*

*August 15th ~ Madison Surf Club.*

about filling board positions for next year. Anthony Grosso, immediate past president, and chair of the nominating committee, is searching for active A & B CAGCS members to run for election at our annual meeting in November.

If you are thinking of serving, call Anthony (860/822-8597) and he will be more than happy to walk you through the procedure for running and serving on the CAGCS Board.

Serving on the board is a great way to see how the association operates, and see exactly what it takes and the detail required to continue to promote our profession.

If you are not sure, call Anthony and

offer to serve on a committee.

Have a great summer, and I hope everyone has enough water.

The rain has been a little inconsistent, but I'm sure that will change now that the summer is finally here.

Remember my regular plea and offer your club to host a meeting. We are looking for sites for next year and beyond.

At this moment, we only have our 2002 annual meeting booked at the Birchwood Country Club, with no other prospects.

Remember, your club schedules events approximately a year in advance. It is not too early to come forward.

**PARTAC<sup>®</sup>**  
**GOLF COURSE**  
**TOP-DRESSING**



**AMERICA'S PREMIUM**  
**HEAT TREATED**  
**TOP-DRESSINGS**

**TYPAR<sup>®</sup>**  
 GEOTEXTILES & TURF BLANKETS

**U.S. GOLF HOLE**  
**TARGETS™**  
 AND MUCH MORE!

**800-247-2326**  
 DISTRIBUTED IN CT BY:  
 JAMES CARRIERE & SONS  
**914-937-2136**  
 VALLEY FARMS SUPPLY  
**860-651-8555**

**QUALITY PRODUCTS AND SERVICES**

**FOR THE PROFESSIONAL TURFGRASS MANAGER**



**\*QUALITY GRANULAR, LIQUID AND SOLUBLE FERTILIZERS\***

**\*SOIL SURFACTANTS\* \*SEED\* \*MICROBIAL PROGRAMS\***

**\*PROVIDING PROFESSIONAL CUSTOM BULK FERTILIZER APPLICATION\***

**JOE STAHL: 203-209-6951**

**JIM WIERZBICKI: 860-424-7250**

## Pelletier Tournament

(continued from page 1)

Next, the committee contacted 20 superintendents asking for donations for rounds of golf at their clubs to use as prizes. Again, everyone was very eager to help in any way they could.

The response and outpouring from the commercial sector, membership and the state's golf facilities was phenomenal. We had over 50 tee signs donated from businesses and golf facilities, 130 players for the tournament, and an incredible number of personal donations from every sector of our golf industry, including other area associations—the Metropolitan GCSA, the CGSA of New England, Rhode Island GCSA, the GCSA of New Jersey, and the New England Regional



Turfgrass Foundation. I would like to thank everyone for their generosity.

This tournament has proven just how special and close knit our profession is. The outpouring of concern and financial commitment was absolutely overwhelming. It speaks volumes for our industry and for the man we were honoring.

The tournament was extremely successful thanks to the many people who worked

so hard to pull it off. I'm not going to thank everyone individually for it would take too long and I would be afraid of forgetting someone. Instead, I would like to thank everyone as a whole for his or her help and support. Because of that support, we were able to raise in excess of \$40,000 for the Pelletier Children's Fund.

I'm proud to have been part of the tournament and of our association that genuinely cares about one another and one that is willing to help one of its members in time of need.

*Editor's note—If you wish to make a contribution to the Pelletier Children's Fund, make your check payable to "CAGCS" and mail it to the CAGCS Office, P.O. Box 3678, Woodbridge, CT, 06525.*

*We would like to take this opportunity to thank everyone who participated in the golf tournament held at Richter Park in memory of our husband and father, Thomas Pelletier.*

*The response to this fund raising effort was overwhelming and though the words "thank you" seem inadequate, we are so very grateful to each of you.*

*Your sincere concern for us would have meant so much to Tom.*


*The kindness and generosity you have shown us has touched us deeply and we thank you from the bottom of our hearts.*

*Sincerely,*

*Amy,*

*Sam & Peter Pelletier*

STUMP



Bill Ennis  
(860) 658-2100

RECYCLER.

CT Arborist License #62372 Fully Insured

TEE & GREEN  
SOD

—INCORPORATED—

P. O. Box 418  
Exeter, Rhode Island 02822

David Wallace

Telephone: 401/789-8177    Fax: 401/789-3895

**Regulatory Update —  
Water Diversion Permit**

by Robert F. Good, Jr., CPG,LEP

A new Public Act, recently passed by the Connecticut General Assembly, will directly involve any golf course in Connecticut that uses a private water supply for irrigation.

The Act requires that any party who withdraws more than 50,000 gallons of ground water or surface water, during any 24-hour period (*a water diversion*), must submit operating data for each water source to the Department of Environmental Protection (DEP) by July 1, 2002. It also establishes July 1, 2003 as the deadline for filing a Water Diversion Permit application.

Public Act 01-202, which was passed this June, is designed to update the state's water diversion records and to require the previously unregistered or unpermitted diversions to obtain a Water Diversion Permit.

By July 1, 2002, each party that maintains a diversion, as defined above, must submit monthly data on the frequency and withdrawal rate for each individual discharge point (i.e., wells, ponds, streams, etc.) for the calendar years of 1997 to 2001. The DEP will allow estimates of the withdrawals in the absence of a meter.

If you are one of the fortunate few that registered their diversion back in 1982, the data you submit must correspond to your already registered withdrawal points.

If, on the other hand, you are in the majority, and your course maintains (as of July 1, 2001) an unregistered or unpermitted diversion that was eligible for registration in July, 1982, you must provide additional information on: (1) the location, capacity, frequency and rate of the withdrawals of each eligible discharge point that was in place as of July 1, 1982; and (2) a description of the water use and water system that was in place on or before July 1, 1982, including information to verify its operation at that time.

If your course maintains (as of July 1, 2001) an unpermitted diversion that was not eligible for registration in July, 1982 (i.e., withdrawing less than 50,000 gallons per day in 1982 or a new withdrawal since 1982), you must provide additional information on: (1) when the diversion was actually initiated; (2) a description of the current water use and water system operation; and (3) the location and capacity of each discharge point.

The DEP, in consultation with the Department of Health and the Department of Public Utility Controls, will be developing a form for the required data submission. We will keep



*Innovation,  
Integrity,  
Product Research,  
and A Money Back Guarantee!*

*Soil surfactants from Aquatrols -  
a company you can count on.*



(800) 257-7797 / (856) 751-0309 / Fax: (856) 751-3859  
www.aquatrols.com

you posted on the availability of this form.

Finally, and perhaps most importantly, the Act includes some language about possible enforcement actions. The Act clearly states that the information provided to the DEP will not be used to order payment of civil penalties, provided the party has filed a permit application for the diversion on or before July 1, 2003.

This exclusion, however, does not apply to any information that the DEP documents independently of the data submissions, and failure to report information pursuant to his Act may result in civil penalties.

*Editor's note — Golf courses supplied by a municipality or a local water authority do not need to apply. Total numbers not in compliance may be skewed because of this.*

**ATHLETIC FIELD RENOVATORS, LLC**  
Sports Field Renovations and Maintenance



Specializing in:  
Verti-Drain deep line Aeration

- Verti-Drain
- Rotolairon
- Aeravator
- Drill Seeding
- Top Dressing
- Fertilizing
- Liming
- Seeding

203-484-4555 • PO Box 664 Northford, CT 06472



**UMASS Turf Program  
website has a new address  
[www.umassturf.org](http://www.umassturf.org)**

You can subscribe for free email announcements every time something new is posted on the website, such as disease or insect messages.

Instructions are on the home page of the website. It just takes one quick email to get on the list. Note also that Dr. Gail Schumann's fungicide chart, updated as needed, can now be downloaded from the website.

\* \* \* \* \*

**Congratulations to**

**Dennis and Cindy Houle** on the birth of a son, John; and

**Christiaan and Christine Kipp** on the birth of a son, Joseph; and

**Lindsey and Leslie Munger** on the birth of a son, Tyler Christopher.

\* \* \* \* \*

**Condolences to Harry Meusel** on the passing of his wife, Gladys.

**Room Block  
Orlando, FL**

CAGCS will again be working with GCSAA and GCSAA Travel on a block of 25 rooms at the Rosen Centre (headquarters hotel) for the 2002 Conference & Show in Orlando, FL.

As soon as all of the information has been received, a memo will be sent out to the entire membership.

\* \* \* \* \*

**2001 Membership  
Directory**

All CAGCS members should have received their 2001 membership directory.

Please make a date correction on page 21. Tower Ridge CC will host our annual superintendent/assistant tournament on October 16.

If you have any changes during the year (address, telephone, employment) please call the office 203/387-0810.

**A hot tip...  
Try the  
fire department**

by Bob Vavrek, Agronomist

April found many superintendents in the process of interviewing, hiring and training part-time employees for the maintenance crew. The pool of available labor has dwindled over the past several years, partly due to the low rate of unemployment across the region.

College and high school students were once a dependable source of labor, but shorter summer vacations have limited their usefulness.

Retired seniors are the foundation of the part-time labor force at many golf courses, and as a rule make excellent employees. However, they are usually utilized almost exclusively for basic mowing operations, and may not always be the best option for some of the more physically demanding tasks, such as digging up and repairing underground irrigation leaks, hand raking bunkers, or hand mowing.

Immigrant part-time employees are becoming a common sight at an increasing number of golf courses, but many superintendents find that issues such as supplying housing and procuring the proper visa/work permits too troublesome and time consuming.

*(continued on page 11)*

USGA Recommended Sands  
Topdressing ~ Divot Mix

Root-Zone Mixes  
Bunker Sand & Pea Stone

*Holliston Sand Co., Inc.*  
Tift Road ~ Slatersville, RI 02876

AllGro Compost  
AllGro Mixes

(401) 766-5010  
Fax (401) 762-4976

**Connecticut  
Mulch** 

*Covering ground since 1978*

Business Address  
1300 East St.  
Suffield, CT. 06078

Mailing Address  
1515 North Stone St.  
W. Suffield, CT 06093

Telephone  
(860) 623-2987  
Fax 292-1047

CAGCS thanks the following tee sponsors, individual contributors and tournament players

- Acker, Brian  
 Alpine, The Care of Trees  
 Allens Seed Store, Inc.  
 Anderson Turf Irrigation  
 Anes, Barry  
 Apawamis Club  
 Aquatrols Corp. of America  
 Arbor Care, Inc.  
 Arison, Al  
 Atlantic Irrigation  
 Bachand, Fred  
 Barratt, Paul  
 Bayer Corporation  
 Birchwood Country Club  
 Black Hall Club  
 Blind Brook Club  
 Brownson Country Club  
 Burning Tree Country Club  
 Cadenelli, Stephen  
 Cancelleri, Daniel  
 Carlton Public Golf Club  
 The Cardinals, Inc.  
 Chas. C. Hart Seed Co.  
 Christ, Paul  
 Clinton Country Club  
 Connecticut Golf Club  
 Connecticut Mulch Distrib.  
 Cook, Richard  
 Cooper, Douglas  
 Country Club of Avon  
 Country Club of Fairfield  
 Country Club of Farmington  
 Country Club of New Canaan  
 Country Club of Waterbury  
 Curtain Call, Inc.  
 D & S  
 Dell, David P.  
 Dickinson, Bert  
 DiRollo, Peter  
 DiVito, Steve  
 Down to Earth GC Construction  
 Dukette, Michael  
 Dwyer, Bob  
 Ellington Ridge Country Club  
 Emrich, Robert  
 Fabrizio, Joseph  
 Fairchild Wheeler Golf Club  
 The Farms Country Club  
 GCSA of New England  
 Gallagher, John  
 Glastonbury Hills Country Club  
 Glenmore Landscape  
 Golf Club of Avon  
 Goodhouse, Edward  
 Gonzalez, Paul
- Gorton, George  
 Grass Roots Turf Products  
 Green Woods Country Club  
 Greengraces Company  
 Gurney, Shane  
 Holliston Sand Co.  
 Hop Meadow Country Club  
 Innis Arden Golf Club  
 Irving Levine Auto  
 James Carriere & Sons  
 Johnson, Eric  
 Kennedy, Les & Mary Jo  
 Kocet, Joseph  
 Lambert, Lyman  
 LESCO, Inc.  
 Lucas, Patrick  
 Lowell, Walter  
 Madison Country Club  
 Malay, Joseph  
 Maifei, Michael  
 Martin, Richard  
 McCormick, Peter  
 Metro Mlorganite  
 Metropolitan GCSA  
 Mooney, Michael  
 New England GCSA  
 New England Reg. Foundation  
 Nielson, Robert  
 Norwich Golf Club  
 Oak Lane Country Club  
 Old Lyme Country Club  
 Orange Hills Country Club  
 Oronoque CC Golf Members  
 Ovlain, Karnig  
 Pare Engineering Corp.  
 Pautipaug Country Club  
 Pequabuck Golf Club  
 Pine Valley Country Club  
 The Pond Connection  
 Portland Golf West  
 Powers, Timothy  
 R. F. Morse & Son  
 Race Brook Country Club  
 Rackliffe, Dan  
 Rackliffe, Steven  
 Rappoccio, Peter  
 Rustici, Joseph  
 Rhode Island GCSA  
 Sawtelle Bros., Inc.  
 Scheiber, Les  
 Scheyhing, Fred  
 Shawmark Industries  
 Simsbury Farms Country Club  
 Southward Ho Country Club
- Danaher, Doug  
 Decker, Mike  
 Deep, John  
 DeFazio, Ben  
 DeFranco, Eva  
 DeMaida, Joe  
 Depascale  
 Deubel, Skip  
 Donovan, Shawn  
 Dotti, Paul  
 Dowling, Tom  
 Eberhard, Bob  
 Esposito, Bob  
 Esposito, Mike  
 Ferraiuolo, Frank  
 Fuller, Mark  
 Fusek, Ed  
 Fusek, Emil  
 Gettings, Steve  
 Gilligan, William  
 Glazier, Gary  
 Goodrich, John  
 Grace, Peter  
 Grasso, Tony  
 Grosso, Anthony  
 Hetherington, Raymond  
 Hinckle, Bob  
 Holcomb, Ron  
 Holliday, Tracey  
 Huie, Jeff  
 Jacobellis, Sam  
 Johnson, Byron  
 Kennedy, Jr., Les  
 Keeler, Dennis  
 Kerr, Dave  
 Kerr, Timothy  
 Kozey, Lee  
 Krizian, Sam  
 Kruczek, Kurt  
 Ladzinski, Paul  
 Lamphier, Frank  
 Lippke, John  
 Lombardo, William  
 Lowndes, Ed  
 Lynn, Harry  
 MacGeorge, Bill  
 McCarthy, Anne  
 McKean, Rick  
 McMillan, Myra  
 McNally, Jim  
 Mead, Al  
 Medeiros, Jim  
 Medeiros, Matt  
 Medeiros, Sue  
 Millett, Earl
- Skungamaug River Golf Club  
 Steven Willand, Inc.  
 Stimson, David  
 Streeter, John & Pauline  
 Sullivan's Construction  
 Tallwood Country Club  
 The Terre Co. of New Jersey  
 Tibbles, Stephen  
 Toner, Gerard  
 Topstone Golf Course  
 Torrington Country Club  
 Toshi, Robert  
 Twin Hills Country Club  
 Turf Products Corporation  
 Tuckahoe Turf Farms  
 Turf Savers  
 Ty-Crop, Inc.  
 United Concrete  
 Valley Farms Nursery  
 Vassar Golf Course  
 Vibber, David  
 Wallace, Michael  
 Wallingford Country Club  
 Wampanoag Country Club  
 Watroba, Thomas  
 The Wee Burn Country Club  
 Westchester Tractor, Inc.  
 Westchester Turf Supply  
 Winfield Nursery  
 Woodbridge Country Club  
 Woodward, Al
- Golfing Participants  
 Aulenti, Angela  
 Basconi, Dave  
 Belowsky, Dave  
 Benowitz, Andy  
 Binsse, Eddie  
 Bonacci, Felix  
 Brinley, Al  
 Browser, Ed  
 Burnham, Peter  
 Byrne, John  
 Chalfour, Bob  
 Chrzanowski, Mike  
 Cochlo, Ed  
 Coffey, Dan  
 Consolati, Ed  
 Cosker, Norm  
 Coty, Mike  
 Couclon, Phil  
 Crawford, Terry
- Moran, Greg  
 Moran, John  
 Moran, Sean  
 Morse, Bruce  
 Myers, Bob  
 Neaton, Phil  
 Nessel, Ed  
 O'Hara, Gerry  
 O'Keefe, John  
 Olovson, Todd  
 Palotta, Mike  
 Peoples, Bruce  
 Pelletier, Robert  
 Pezella, Lou  
 Pierson, Peter  
 Pope, Brian  
 Popp, Linda  
 Portugal, Mark  
 Rabuse, Chris  
 Reeb, Mike  
 Rogers, Jeffrey  
 Russo, Frank  
 Russo, Jr., Mike  
 Russo, Sr., Mike  
 Sabino, Paul  
 Samuelson, Carl  
 Santalone, Ed  
 Savage, Bruce  
 Savage, Margie  
 Savage, Robin  
 Sibley, Roy  
 Silva, Bob  
 Skelly, Brian  
 Sklanka, Steve  
 Smith, Jud  
 Spencer, Jim  
 Steinhofner, Ernie  
 Swanson, Carl  
 Szymanski, Bob  
 Thomas, Linda  
 Tretera, Al  
 Tretera, Scott  
 Varkonyi, Mike  
 Vilandia, Pina  
 Viola, Jud  
 Volk, Bill  
 Ward, Harry  
 Welch, Bob  
 Weld, Jeff  
 Wentworth, Jeff  
 Zuk, Jonathan

Many thanks to cash contributors whose names we do not have, and apologies for any misspelled names.





**Golf Results**

*Black Hall Club - May 15th*  
Two-man teams - Best Ball

**Gross**  
Greg Stent/Sean Moran - 73  
Scott Tretera/Jud Smith - 75  
Mike Griswold/Chris Anhderson - 76

**Net**  
Keith Angilly/Gary DePaola - 61  
Wayne Urban/Matt Howland - 62  
Al Adaskaveg/Mike Dukette - 63  
John Callahan/Tom Watroba - 65

**Skill Prize Winners**

Long drive - Chris Mauro  
Closest-to-line - Mike McDermott  
Long putt - #18 - Skip Deubel  
Long Putt #5 - Don Beck  
Closest-to-pin #9 - Scott Tretera  
Closest-to-pin #13 - Scott Ramsay

*Connecticut Golf Club - June 18th*  
Best Ball of Four - 80% Handicap - A B C D

1st Gross - M. Dukette, J. Calladio, R. Good, B. Chalifour - 70  
2nd Gross - S. Tretera, M. Osborn, B. Armstrong, P. Burnham - 74  
1st Net - S. Moran, M. Chevrier, T. Tighe, M. Faherty - 60  
2nd Net - D. Houle, W. Urban, S. Rackliffe, M. Streckfus - 61  
Hot Ball - J. Smith, P. Grace, S. Donovan, R. Beaudry - 80  
Closest-to-pin #8 - Keith Angilly, #10 - Peter Tyrell  
Long drive - Sean Moran  
Closest-to-line - Steve Smith  
Long putt #9 - Glenn Dube, #16 - Wayne Urban

**We need your help!**

Realizing that hosting a CAGCS monthly meeting takes a great deal of planning a year or more in advance, we need to work on future meeting sites now.

The competition to get a club to host one of our monthly meetings is fierce. We are thrown into the pot with the CSGA, CT Section PGA, CT Women's Golf Assoc., etc. seeking approval from clubs to host a meeting at their facility.

There is a value to the host club and the host golf professional in having a CAGCS monthly meeting. A typical golfing meeting would benefit the club with golf cart rentals, food and beverage purchases and golf prizes from the pro shop.

Call the CAGCS office today!

**Upcoming Events**

**July 23rd**  
CAGCS Monthly Meeting  
The Farms Country Club  
Paul Sabino, Host Supt.

**August 15th**  
CAGCS Family Day  
Madison Surf Club  
(Rain date August 22nd)

**August 15th**  
URI Field Day

**September 24**  
CAGCS Monthly Meeting  
Hunter Golf Club  
Keith Angilly, Host Supt.

**October 1**  
*Scholarship & Research Tournament*  
Torrington Country Club  
Edward Goodhouse, Host Supt.

**October 16th**  
Superintendent/Assistant Tournament  
Tower Ridge Country Club  
Scott Ramsay, Host Supt.  
(Change this date on page 21 of your CAGCS Directory)

**November 7th**  
CAGCS Annual Meeting  
Rock Ridge Country Club  
Robert Welch, Host Supt.

**December 8th**  
CAGCS Annual Christmas Party  
Woodbridge Country Club



**GOLF IRRIGATION SERVICES, inc.**  
P.O. Box 505, 103 McCracken Road, Millbury, MA 01527

Art de Atienza 508-756-5903  
Fax 508-757-8626

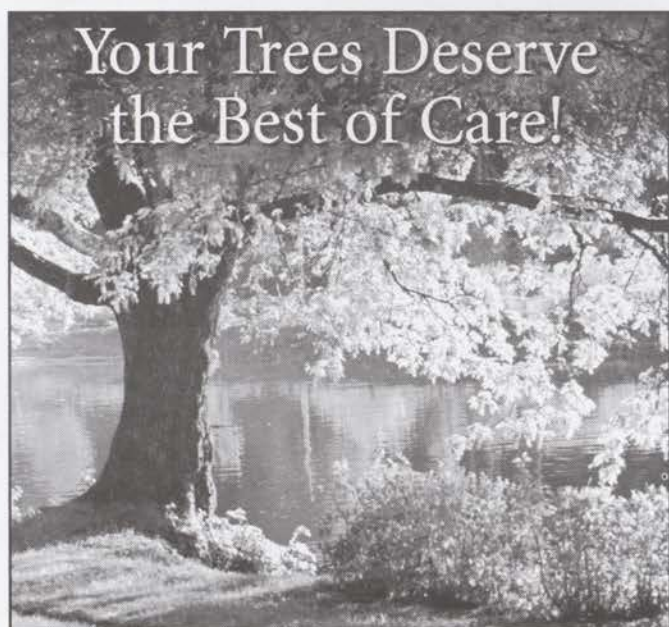
IRRIGATION SYSTEM SPECIALISTS



Owen Regan

A T Sales Associates, Ltd.  
1787 Olde Louisquisset Pike  
Lincoln, RI 02865

Tel 401-465-8066  
Fax 401-729-8163  
Pager 800-592-0675



Your Trees Deserve  
the Best of Care!

All Phases of Tree Care:  
Residential and Commercial



**BARTLETT**  
TREE EXPERTS

[www.bartlett.com](http://www.bartlett.com)

Local Offices:

66 Wooster Heights, Danbury, CT 06810  
1250 Hopmeadow St., Simsbury, CT 06070

877-BARTLETT

## CAGCS members support UConn Turf Program

I would like to take the opportunity to thank members of CAGCS for taking the time to respond to the UConn Turf Program survey in the last newsletter. There are a number of CAGCS members who offered to volunteer their time to guest lecture or host student field trips.

The response for donated used equipment has been tremendous. Items donated to date are: 3 walk-behind greens mowers, one topdresser, one fiveplex light weight fairway mower, one 3pt. Hitch slicer/seeder.

We are hoping to acquire a sod cutter, a turf aerator, a walk-behind slicer seeder or a verti-cutter.

The equipment donated is presently being used to maintain the turf plots at the UConn research facility in Storrs. It will also be used to teach students the proper operation of equipment that is being utilized by the golf course industry.

The support that members of CAGCS and their clubs are giving the UConn Turf Program is very much appreciated.

I have had the opportunity to visit with superintendents at their golf courses and plan on visiting more throughout the summer.

One of my stops was at the new CAGCS office. I was very impressed. Pauline and Mary Jo were busy unpacking and setting up. If you get a chance, I would suggest stopping in. The new office is in a very convenient location. If you happen to stop by at lunchtime, there is a great sandwich shop across the street!

Thanks for your support,  
Steve Rackliffe, CGCS



ENGINEERING CORPORATION

### Serving Connecticut and Greater New England for over 30 years

- ◆ Drainage, Subdrainage, Groundwater Control & Subsoil Modification
- ◆ Water Supply Engineering
- ◆ Water Diversion Permits
- ◆ Stormwater Management
- ◆ Retaining Walls, Bridges & Culverts
- ◆ Site Planning & Design
- ◆ Environmental Consultation & Permitting
- ◆ Wastewater, Septic System Design & Permitting
- ◆ Traffic Circulation Studies
- ◆ Parking and Pavement Design

NEW LONDON, CT 70 HOWARD ST. SUITE D NEW LONDON, CT 860-442-4421  
LINCOLN, RI 401-334-4100  
NORWOOD, MA 781-762-1442  
NEW BEDFORD, MA 508-991-4400  
Contact: Al Bisacky, P.E., CT Office Manager

### Soil Testing Information

By Dawn Pettinelli, Manager of  
Laboratory Research Services

Soil testing is an easy and inexpensive way to assess the pH and fertility levels of your soil. The University of Connecticut Soil Nutrient Analysis Laboratory offers several soil tests which may be of interest to golf course superintendents. Our standard nutrient analysis provides the soil pH plus the levels of calcium, magnesium, phosphorus and potassium. Limestone and fertilizer recommendations are based on soil test results.

Separate tests are available for the percent of soil organic matter and particle size distribution. The cost of a standard nutrient analysis is \$5 per sample. Discounts are available for bulk samples. Contact the lab at 860/486-4274 for our free brochure or information on bulk sample discounts, or visit us at our web site at [cag.uconn.edu/plsci/stlab.htm](http://cag.uconn.edu/plsci/stlab.htm).



Roy Sibley celebrated 25 years as a CAGCS commercial member in 2000. He is a sales representative for the Chas. C. Hart Seed Co., having joined the company in 1977, and covers Connecticut, Rhode Island and eastern Massachusetts. Roy has been in sales most of his professional life and has seen our industry change over the years. Roy grew up in Pawtucket, RI,

## Roy Sibley profile

by Heather Garvin

attended the University of Rhode Island majoring in agriculture because he wanted to be a farmer. After college, he spent two years in the 7th Army stationed in Germany. Upon returning, Roy taught for two years at the Bristol County Agriculture School.

In 1955, he became an agronomist for AGRICO Chemical and after four years, he got into sales for them covering agriculture and turf in Massachusetts and Rhode Island. In 1973, Roy worked for Turf Products Corp. with Gary Bryant.

Over the years, Roy has seen many changes in the industry. The conditions of courses have improved so much that it makes the superinten-

dent's job more stressful to keep them at a level equal to or better than their neighboring course.

In speaking with a long-time, super friend of his recently, they were laughing about the collars being 1/4" now and remembering when greens were that height of cut. He pointed out to me during our conversation that a PGA Tour Pro was asked this winter what makes the scoring lower—the golf equipment (balls, clubs, etc.) or the course. The pro said "the conditions of the course".

Roy resides in Jewett City, CT, with his wife, Dianne. They have four children. Roy takes time to enjoy fishing and golf in his busy schedule.

# Total Solutions.

**tpc** turf products corporation

The exclusive New England **TORO** distributor

*For over thirty years, TPC and Toro have teamed up to deliver superior quality equipment to the region. We are experts at providing the proper tools necessary to protect and preserve outdoor environments.*

**TORO** Sales. Service. Parts.

*Serving MA, CT, NH, ME, RI and Putnam and Westchester Counties in NY.*

**1-800-243-4355**

157 Moody Road • Enfield Connecticut 06083

### Commercial Equipment



### Irrigation Systems



## URI selects Nathaniel Mitkowski

By Bob Chalifour, Editor

Nathaniel Mitkowski, a native of Bethany, CT, will start August 1st at the University of Rhode Island as a turf pathologist.

The Amity Regional School system is where Nat first became interested in plant science. He spent his freshman year in the Honors College at Southern Connecticut State University in New Haven, CT, and majored in Biology with a concentration in Botany.

In the Fall of 1994, he transferred to the University of Massachusetts in Amherst, MA, and began his career in Plant Pathology. Under the tutelage of Dr. Gail Schumann and Dr. Robert Wick, he gained a deep appreciation and fondness for the art and science of Plant

Pathology.

At UMASS, he studied a wide variety of pathogens and their host interactions but focused on fungal turf pathogens and plant parasitic nematodes.

After graduating *cum laude* from Massachusetts, he entered Cornell University in 1997 as an M.S./Ph.D student and joined the lab of Dr. George Abawi at the New York State Agricultural Station in Geneva, NY.

At Cornell, his research has focused on nematode disease of vegetables, particularly *meloidogyne hapla* on onions, carrots and lettuce.

In June, 1999, he was married to Sara Anne Niles in Northampton, MA.

As a Cornell student, he has a minor in Plant Breeding and Mycology. He is a member of the American Phytopathological Society (APS), the Society of Nematologists (SON) and the American Association for the Advancement of Science (AAAS).

Nat and his wife, Sara, and new arrival, Gillian Arabela, will be residing in North Kingstown, RI.

Nat is looking forward to working with staff at URI and the renowned Dr. Noel Jackson. Nat is also looking forward to meeting turf managers from southern New England.

Welcome aboard, Nat!

## GOLF COURSES RELY ON



**BUILT TO LAST**, ConVault's patented system protects your fuel within a steel primary tank wrapped in a 30 mil poly liner, reinforced within a six-inch concrete vault. Over 33,000 ConVault remain in service today without a single system failure.

### Connecticut Golf Courses with ConVault Fuel Storage

ALLING MEMORIAL GOLF  
BLACK HALL GOLF  
CANDLEWOOD LAKE CLUB  
CLINTON COUNTRY CLUB  
C.C. OF AVON  
C.C. OF NEW CANAAN  
C.C. OF WATERBURY  
C.C. OF FARMINGTON  
CRESTWOOD PARK  
EAST MOUNTAIN GOLF  
DARIEN C.C.  
FARMINGBURY GOLF  
FARMS COUNTRY CLUB  
FEN WICK GOLF  
GRASSY HILL C.C.  
GREAT RIVER GOLF  
HARBOR VIEW  
HOP BROOK GOLF  
HOPMEADOW C.C.  
HUNTER GOLF  
INDIAN SPRINGS  
INNIS ARDEN  
MADISON C.C.  
NEW HAVEN COUNTRY CLUB  
OAK LANE C.C.

OLD LYME C.C.  
PINE ORCHARD C.C.  
PINE VALLEY GOLF  
PORTLAND WEST  
PORTLAND GOLF COURSE  
PUTNAM C.C.  
QUARRY RIDGE  
ROCKLEDGE GOLF  
ROCK RIMMON C.C.  
SHENNECOSSETT GOLF  
SHUTTLE MEADOW  
SILVERMINE GOLF  
SILVER SPRING C.C.  
SOUTHINGTON C.C.  
TASHUA KNOLLS  
TIMBERLAND GOLF  
T.P.C. AT RIVER HIGHLANDS  
THE PATTERSON CLUB  
TUMBLEBROOK C.C.  
WAMPANOAG C.C.  
WASHINGTON CLUB  
WATERTOWN GOLF  
WETHERSFIELD C.C.  
WESTWOOD GOLF  
WOODBRIDGE C.C.  
WOODWAY C.C.



**UNITED CONCRETE PRODUCTS**

173 Church Street, Yalesville, CT 06492 (203) 269-3119 • Fax (203) 265-4941  
Web Site: [www.unitedconcrete.com](http://www.unitedconcrete.com)

**Above Ground Fuel Storage Tanks UL 2085 Listed**

(continued from page 6)

A Wisconsin superintendent provided this tip at the state turf conference during a discussion regarding golf course labor issues: try local fire departments. Full-time firefighters often have a work schedule of 24 hours of duty and then 48 hours off. You might recruit several part-time employees at fire stations who are either casual golfers or someone who simply likes working outdoors.

You would be tapping into a readily available source of dependable, responsible men and women who already have a well-defined work schedule made several weeks in advance.

In addition, this employee has excellent first aid training. Providing free

golf at least one day a week would be a definite bonus, and many golf facilities already provide this employee benefit.



It is hard to imagine a golf course in an area where there is no fire department nearby, and during the current labor crunch it makes sense to turn over every stone. You never know when you just might find the ideal employee.

Editor's note— Take a look at this sign! Is how you recruit indicative of the type of employees you attract?

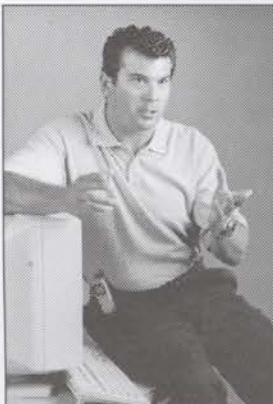
*Stephen A. Roberts*  
LANDSCAPE ARCHITECT

We offer Design/Build services or just design, what ever serves our clients best.

- Golf course design.
- Golf course assessment and enhancement programs.
- Grading & drainage.
- Ponds & water features.
- Planting design.
- Deck and patio design.

MEMBER SINCE 1997  
CONNECTICUT ASSOCIATION OF  
GOLF COURSE SUPERINTENDENTS

200 Depot st. • Chicopee, MA • 01013  
Phone 413.592.1800 Fx 413.592.9590  
E-Mail: Roblanddes@aol.com



## Who Says You Need a Million Dollar Budget To Upgrade Your Irrigation System?

Hunter Golf specializes in helping superintendents upgrade their courses with top-of-the-line retrofit equipment. And we're ready to work within your time frame - whether it's five months or five years. Switch out a few inefficient heads and replace them with reliable Hunter rotors. Add Hunter field controllers with a two-mile maintenance radio when your budget allows. Or implement Hunter central control in affordable stages. Your Hunter Golf distributor can evaluate your current system and work out a realistic renovation plan. Give us a call today!



Authorized Hunter Golf Distributor



**BISCO**  
IRRIGATION - WATER SYSTEMS

CONNECTICUT  
East Hartford, 80 Thomas St., 888-522-9182  
Golf Hdqtrs: Milford, 110 Raton Dr., 877-878-0658

*CAGCS thanks these patrons for their continued support of our association*

**A-OK Turf Equipment**

Articulator Dealer  
Coventry, RI 02816  
Michael D. Cornicelli  
(401) 826-2584

**A T Sales**

Premium Sod for Golf Courses  
Lincoln, RI 02865  
Owen Regan  
(401) 465-8066

**Allen's Seed, Inc.**

693 South County Trail  
Exeter, RI 02822  
Al La Prise  
(401) 884-2097 - (800) 527-3898

**Anderson Turf Irrigation, Inc.**

5 Cronk Rd., P. O. Box 7036  
Plainville, CT 06062  
Jesse J. Anderson, Jr.  
(860) 747-9911

**Aventis Environmental Science**

311 Carriage Drive  
Kensington, CT 06037  
David J. Sylvester  
(860) 828-8905

**C. R. I. S., LLC**

Golf Course Irrigation  
923 Woodtick Road  
Wolcott, CT 06716  
Chris Carney (203) 879-2362

**The Cardinals, Inc.**

Complete Distributor of Golf Course  
Accessories & Maintenance Supplies  
John Callahan  
(860) 673-3699

**Championship Turf Services**

Precision Laser Leveling  
Custom Aerification-Overseeding  
Sisis Turf Equipment  
Michael Flowers (800) 562-5860

**The Chas. C. Hart Seed Co.**

P.O. Box 9169, 304 Main Street  
Wethersfield, CT 06129-0169  
R. Sibley ~ R. Holcomb ~ P. Bednarczyk  
(860)529-2537 & (800)326-HART

**Craig Schreiner Golf Architects**

Golf Course Master Planning  
368 W. Liberty St., Suite 2  
Wauconda, IL 60084  
(847) 487-5313 [www.csgolf.com](http://www.csgolf.com)

**D & S**

Floratine Biostimulants, Amino  
Acid Complexes, Soil Amendments  
Trion Lifts and Accessories  
Dave Basconi (203) 250-TURF

**Earth Works, Inc.**

Custom Deep Aerification Service  
West Wareham, MA 02576  
Carl Wallace  
(800) 815-1113

**Egypt Farms, Inc.**

Sterilized Topdressing, Greensmix  
Bagged Topdressing & Divot Mix  
Dean Snyder  
(800) 899-7645 FAX (410) 335-0164

**Glenmore Landscape Service**

Glenn S. Moore  
98 Hack Green Road  
Pound Ridge, NY 10576  
(914) 764-4348

**Greenacres Company**

Dave Pijnenburg  
Irrigation Contractor  
75 Codfish Hill Rd., Bethel, CT 06801  
(203) 748-0558

**James Carriere & Sons, Inc.**

7 Cottage St., Port Chester, NY 10573  
Trap Sand - Partac Topdressing-Drainage Stone  
Bill Carriere  
(914) 937-2136

**LESCO, Inc.**

Strongsville, Ohio 44136-1799  
(800) 321-5325 FAX (800) 673-3030  
Mike Donahue (860) 668-0821  
Mike Dukette (860) 684-6242

**Metro Milorganite, Inc.**

Depend On Us For Four Season Solutions  
Danbury, CT 06810  
Scott Tretera-Ernie Steinhofner-Scott Apgar  
(203) 748-GOLF (4653)

**NORTHERN Professional Turf Products**

Winfield Nursery, Inc.  
Nursery Stock & Turf Care Products  
West Suffield, CT 06093  
Sean Moran (860) 668-5225

**Partac Golf Course Top-Dressing**

Great Meadows, NJ 07838  
(800) 247-2326 (908) 637-4191  
Bill Carriere (914) 937-2136  
Joe Bidwell (860) 651-8555

**R. F. Morse & Son, Inc.**

ParEx Fertilizer - Power Equipment  
West Wareham, MA 02576  
Carl Wallace  
(508) 295-1553

**S.B.I. Connecticut**

Wallingford, CT 06492  
Brett Armstrong-George Gorton  
Mark Grenert-Larry Rustici  
(203) 265-2872

**Sawtelle Brothers, Inc.**

65 Glenn Street  
Lawrence, MA 01843  
Mark Grenert  
(800) 999-TURF

**Shawnmark Industries, Inc.**

Specialty Products & Service  
Warwick, RI 02888  
Matt Howland (24 hours a day)  
(401) 295-1673 ([www.shawnmark.com](http://www.shawnmark.com))

**SIMPLOT PARTNERS**

Joe Stahl (203) 209-6951  
Jim Wierzbicki (860) 424-7250  
Danbury Warehouse (800) 889-8215  
Division of Simplot Turf & Ornamental

**Sisis Turf Equipment**

Golf Course Maintenance Machinery  
Championship Turf Services  
N. E. Manufacturers Representative  
Michael Flowers (800) 562-5860

**SODCO, INC.**

Bentgrass  
High Fescue, Blue/Rye/Fescue, B/R blends  
Unrolling Services  
Matt Faherty (800) 341-6900

**Sound Beach Services, Inc.**

d/b/a White Contractors  
Golf Course Construction & Renovation  
P.O.Box 484, Old Greenwich, CT 06870  
James E. Morris, Jr. (203) 869-8808

**Steven Willand, Inc.**

4 Production Drive  
Brookfield, CT 06804  
Mark Ericson - Gary Mathis  
(203) 775-5757

**Tee & Green Sod**

P. O. Box 418  
Exeter, RI 02822  
Dave Wallace  
(401) 789-8177

**Terre Company of NJ, Inc.**

Byron Johnson, Jr.  
Office (973) 473-3393  
Home (203) 748-5069  
FAX (973) 473-4402

**Tom Irwin, Inc.**

Chemicals, Lebanon Fertilizers  
Earthworks Organics  
Rick Giverson  
(413) 237-7007 (800) 582-5959

**Tuckahoe Turf Farms, Inc.**

Golf Course Turfgrass Sod  
[www.tuckahoeturf.com](http://www.tuckahoeturf.com)  
Skip Deubel  
(800) 243-7582

**Turf Products Corporation**

157 Moody Rd., P. O. Box 1200  
Enfield, CT 06082  
John Ferry ~ Mark Loper  
(203) 763-3581

**Westchester Turf Supply, Inc.**

25 years serving the fine turf profession  
Bob Lippman, Sr. ~ Bob Lippman, Jr.  
Office (845) 621-5067  
FAX (845) 621-7180

**Winding Brook Turf Farm, Inc.**

240 Griswold Road  
Wethersfield, CT 06109  
William Seccareccia  
(860) 529-6869 or (800) 843-0232