



Connecticut Clippings

Volume 44, No 3

October 2010

HEAT

by Dr. Nathaniel Mitkowski,
University of Rhode Island

According to The National Oceanic and Atmospheric Administration, the period of May through July 2010 has officially been deemed the hottest 3 month summer period in the Northeast and the Southeast since records were started in 1895. For the past 115 years, a span of 4 human generations, no one has seen a hotter summer in our region. During July, Manchester NH saw sixteen 90 degree days (four more were 89

degree days). Windsor Locks, CT (just north of Hartford) saw two 100 degree days, thirteen 90 degree days and four 89 degree days. Providence, RI saw one 100 degree day, seven 90 degree days and four 89 degree days. And while July was certainly the peak of the summer-long heat wave, even the temperatures in May and June were much higher than average across the region. Without exaggeration, spending the summer in Rhode Island this year felt just like a normal year in North Carolina or Virginia. And as hot as it was here, the temperatures in the South were even higher. Richmond, VA saw six 100 degree days (two were 105) and seventeen 90 degree days (most of

them above 95 degrees). Out of 31 days, 70% were 90 degrees or warmer.

All this talk about weather and temperature is more than just interesting; this information is absolutely critical in understanding much of the decline and damage that has occurred on turf throughout the East Coast this summer.

In describing the level of extreme temperature this summer, it is important to examine the duration of the heat wave. While New England frequently experiences 90 degree days every summer, normally those warmer days are mixed in with many 70 and 80 degree days. This year, it was not unusual to get 3-4 consecutive 90 degree days with a single day of cooler temperatures before the heat returned. In Hartford during

continued on page 3...



Dr. Nathaniel Mitkowski

IN THIS ISSUE...

Heat.....	1,3
President's Message.....	2
Old Timers Get Together.....	5
Grasscatcher.....	6-7
America's Best College GC.....	8,11
Golf Results.....	Insert
2010 Family Day.....	Insert



John Garcia

One Small Step.....

Thank you to all that responded to the Water Diversion Regulation Process by calling, emailing, and sending letters to our Legislators. On October 26th, the Regulatory Review Committee voted to reject the Regulation and send it back to DEP for modification. We may have won the battle, but this was just the first step in what will be an ongoing process. It is now time to bring all of the innovation of our industry together to make recommendation for reasonable change that can be incorporated into this imminent legislation. If you would like to serve on the committee, or provide some “brain storming” bullet points, please

Connecticut Clippings is an official publication of the Connecticut Association of Golf Course Superintendents

Newsletter Editor
Bob Chalifour, CGCS (Ret.)
Co-Editor
Heather Garvin

Newsletter Committee
David Basconi, John Garcia,
Edward Goodhouse, Ron Holcomb,
Mike Mooney and Jud W. Smith

The Clippings is open to all commentary.
Please send your comments to:
Bob Chalifour, Newsletter Editor,
39 First Street
Groton, CT 06340

The President's Message

.....

contact Scott Ramsay as soon as possible. If you participated in the process, Great Work! Remember to send a Thank You email to the legislators that you contacted. If you are yet to get involved, we still need your help! Government Relations have been, and will continue to be one of the Golf Industries biggest challenges moving forward. There are currently a myriad of National and Local Regulations in the works that are targeting Pesticides, Fertilizers, and Water. Apathy is not an option, if we do not seek out these legislators and help to sculpt these Regulations, our jobs and our livelihood may be at stake. Every voice makes a difference, so speak up! Government Relations Chairman, Scott Ramsay has worked tirelessly on these issues, and we all owe him a debt of gratitude.

Another season is in the books, and as we all prepare our courses for winter and anxiously await the season's first snowfall, we can collectively take a deep breath and be thankful for a bit of down time. This has certainly been

a summer that we will never forget, and we should remember to thank those that help us through it. Our staff, co-workers, peers, and especially our families. I would like to publicly thank the Board of Directors and Mary Jo Kennedy for their dedication and hard work, our Commercial Members for their continued support throughout these difficult economic times, and you, our members for making this association one that I am proud to be a member of. I hope to see you all on December 1st at our Education Seminar, and on December 9th for our Annual Christmas Party!

JG

PARTAC®
GOLF COURSE
TOP-DRESSINGS



America's Premium
HEAT TREATED Top-Dressings

800-247-2326
www.PARTAC.com Fax 908-637-8421

The Right Material Matters.®



- Topdressing
- Bunker Sand
- Root Zone Blends
- Green Divot Mixes
- Bridge Sand
- Drainage Stone
- Drill and Fill
- Synthetic Turf
- Planting Mixes
- Green Rooftops
- Blend to YOUR Ratio

We provide the highest quality natural sands and stone products. For applications ranging from sports turf fields to golf courses, our products are perfect for every project.

Let us quote on your project. Call Bob Chalifour at 860-908-7414, or fax all specs to us at 401-762-4976.



Slater Farms



Holliston Sand

Slater Farms: Slatersville, RI 02876 401-766-5010 www.hollistonsand.com

Holliston Sand Company is NSF certified

Our products are also available dry and in bulk and packaged form. Delivered with dump truck, flatbed or pneumatic tanker.

continued from page 1...

July, there was at least one stretch with 7 consecutive 90 degree days. In Richmond, there was a 16 day streak of 90 degree days. In general, the more 90 degree days we have in a row, the more dramatic the decline in turf quality. As the summer got underway, many superintendents reminisced about the summer of 1988, heretofore the worst superintendent summer of all time. Without a doubt, the summer of 2010 has surpassed it as the hottest and worst summer in the Northeast for growing grass.

A second factor also needs to be considered and that is the manner in which soil heats up and holds heat. Soil is an insulator. It takes longer to heat than air and it holds heat longer. In fact, the radiation of heat back into the environment from the soil has a significant impact on air temperatures. What this means is that if the air temperature is 90 degrees, the soil temperature will be at least that high and probably higher. When temperatures drop at night, soil temperatures drop much more slowly. The consequence of this phenomenon is that during continual high air temperatures, plant roots are constantly experiencing even higher and more consistently high soil temperatures. This is a major problem for turfgrass plants. Extensive research at Rutgers and other locations has demonstrated that turf quality and plant health decline rapidly as plants are continually exposed to 24 hour a day hot temperatures- exactly what happened this summer. The physiological reasons for

this are complex but well documented. A final factor to consider is humidity and rain. When the air is dry, plants move water from the soil and into the air through evapotranspiration. This process also moves nutrients through the plant and more importantly, cools plants down. This past summer, high humidity shut down evapotranspiration, causing plants to get even hotter than if humidity had been low. When evapotranspiration shuts down, water remains in the soil. This then pushes oxygen out of the soil. We often think that nitrogen is the most important nutrient. Actually, oxygen in the soil is the most important nutrient. Plants can go along time without nitrogen. When oxygen is pushed out of the soil, plants die rapidly- within a few days. With no oxygen in the soil, soil becomes anaerobic, roots atrophy and plants die. And this whole thing is complicated by watering. When roots die plants wilt. In order to prevent plants from wilting, plants must be syringed. This adds water to the soil, increasing the level of root atrophy. This cycle is particularly vicious and nearly impossible to escape.

Despite the tremendous heat experienced this past summer, not all golf courses fared poorly, a few courses even thrived. However, the most successful courses were almost always those on USGA sand greens, with excellent drainage, a high percentage of bentgrass, little play and a lot of luck. While it is entirely possible to grow grass on a putting green under less than perfect conditions (i.e. poor drainage, heavy soils, pocketed environments,

excessive shade and primarily Poa annua), this is the year that marginal putting greens failed. In fact, the summer was so severe that courses in Massachusetts, Pennsylvania, Virginia and Georgia closed entirely for weeks at a time, some to simply recover and others to completely regrass.

While bentgrass generally did better than Poa, it was certainly not immune from summer related problems, including a new bacterial wilt of bentgrass, localized dry spots, take-all patch and bentgrass summer decline. But Poa annua took the brunt of the damage this summer from both heat stress and disease. Summer patch, bacterial wilt, nematodes, and anthracnose were rampant. More Poa annua greens were partially or entirely lost this year than in any previous year in the last ten. Other diseases were also common, including Pythium blight and brown patch, neither of which has a preference as to which host it attacks. And for the first time in my career, copper spot was widespread.

In short, the summer of 2010 was a summer most of us would happily forget. However, we can all take some of the lessons learned from this year and apply them next year, hoping for better weather. We should also never forget that every golf course superintendent is a farmer, a grower of grass. Despite all the tools we have available to grow and manage grass, we should remember that we cannot always overcome nature and are often subject to its whims.



A complete equipment, agronomic and irrigation team. No assembly required.

Like to make things easier on yourself? Talk to us. We have a unified team who can put together a comprehensive solution right for your course. With no confusion on how all the pieces fit together. Just another way, you can **Consider us part of your crew.**

LaCorte Equipment
Gale Stenquist
631-891-2425 for sales
631-369-6530
parts and service direct

Agronomics:
Ward Weischet, GSR
203-605-0013



Brett Armstrong
203.240.1064

**steven
WILLAND**
inc.
Quality Turf Equipment

4 PRODUCTION DRIVE BROOKFIELD, CT 06804
Service/ Parts- 866.435.1380
www.stevenwillandinc.com

Mark Osborn
203.470.1178



**NO
HYDRAULICS**
means **NO LEAK
POINTS, NO BROKEN
HOSES, NO FLUID
TRAILS.**

**An annual savings of
40% with HYBRID
models and
80% savings with
ELECTRIC**

Its not easy being GREEN... unless you're ORANGE

COMPANION
LIQUID BIOLOGICAL FUNGICIDE

- Proven
- Tested
- Reliable
- Consistent



What is Companion*?
A Broad-Spectrum Biological Fungicide for Soil Borne and Foliar Diseases

- Acts as a **Plant Growth Promoting Rhizobacterium (PGPR)** that stimulates better rooting and better overall growth.
- Is an important tool in **Disease Resistance Management Program**, helping to prevent pathogens from building a resistance to chemical fungicides.



Call Craig Lambert Today!
(917) 416-4588
www.GrowthProducts.com





2010 Old Timers Get Together August 29, 2010

Attendee included – Al Adaskaveg, Charile Babcock, Fred Bachand, Paul Barratt, CGCS, Roger Barrett, Joe Bidwell, Bob Chalifour, CGCS, Dick Cook, Doug Cooper, Larry DellaBianca, Tom Gresh, Al Hawkins, Ron Holcomb, Dick Hosking, Frank Lamphier, Mark Loper, Jim MacDonald, Mike McDermott, Lyle Mitchell, Gary Mondor, Phil Neaton, Jack Pluta, Stanley Sablak, Allen Semprebon, Roy Sibley, Bob Silva, Brian Skelly, Doug Stachura, Dave Stimson, Hank Suchinski, Dave Vibber, Bob Viera, Carl Wallace, Mike Wallace, CGCS, Greg Wojick, and Ed Zenisky ~ Thank you to Ron Holcomb for organizing this event!

**TURF UNIVERSITY
CLASS OF 2010**

Curalan® EG
Fungicide,
Emerald®
Fungicide,
Honor® Fungicide



Insignia®
Fungicide,
Iprodione Pro 2SE
Fungicide,
Trinity® Fungicide









Basagran® T/O
Herbicide,
Drive® XLR8
Herbicide,
FreeHand® 1.75G
Herbicide

Onetime®
Herbicide,
Pendulum®
AquaCap™
Herbicide,
Pendulum® 2G
Herbicide

Pendulum® 3.3 EC
Herbicide,
Segment®
Herbicide,
Tower® Herbicide

**For diseases, weeds or pests,
BASF is at the top of the class.**

Contact John Bresnahan at (413) 565-5340 or john.bresnahan@basf.com.
betterturf.basf.us

**BASF**
The Chemical Company

Always read and follow label directions.
Basagran, Curalan, Drive, Emerald, FreeHand 1.75G, Insignia, Onetime, Pendulum, Segment, Tower and Trinity are registered trademarks and AquaCap and Honor are trademarks of BASF. ©2010 BASF Corporation. All rights reserved.

CAGCS Calendar of Events 2010-2011

- | | |
|------------------|---|
| December 9, 2010 | J. Timothy's Tavern
CAGCS Christmas Party
4:00 – 8:00pm |
| January 18, 2011 | CAGCS Winter Seminar
Hawthorne Inn, Berlin, CT |
| April 12, 2011 | Tradition Golf Course
At Wallingford |
| October 12, 2011 | Pequabuck GC
Super/ Assistant |
| November 7, 2011 | Torrington CC
Annual Meeting |



Kevin P. Collins
Mid-Atlantic & NE Territory Manager
37 Oneonta Road • Carmel, NY 10512
845-228-1728 Fax
609-841-2077 Mobile
845-225-1761 Home Office
kevin.collins@aquatrols.com

**Since
1917**

Benjamin Dunning
President

Dunning
SAND & GRAVEL

105 Brickyard Road • Farmington, CT 06032
(860) 677-1616 • Fax (860) 674-0668
www.dunningsand.com • bdunning@dunningsand.com
Certified 2mm Root Zone & Bunker Sand



Congratulations

Shannon & Gloria Slevin on the birth of their daughter Mairi Rose weighing in at 6 lbs 8 oz on August 24, 2010.

Marc & Wendy Weston on the birth of their daughter Elizabeth Reese weighing in at 7 lbs 10 oz on September 10, 2010.

Ed & Christina Downing on the birth of their daughter Sofia weighing in at 6 lbs 4 ozs on October 22, 2010.

Michael Wallace, CGCS, who was recertified through GCSAA in July 2010.

Condolences

To Karl Knoblock on the passing of his wife Mae on August 31, 2010. Contributions can be made in her memory to the Juvenile Diabetes, 2969 Whitney Avenue, Hamden, CT 06518.

To Gregory & Celeste Misodoulaskis parents of Gregory George (18) who passed away tragically on September 3, 2010. Donations can be made in his memory to the Gregory G. Misodoulakis Memorial Scholarship c/o

Apponequet Regional High School Guidance Dept., 100 Howland Rd., Lakeville, MA 02347. Please make check payable to FLRSD with Gregory's name on the memo line.

GCSAA Room Block Deadline Reminder!

Deadline for reservations is Wednesday, November 24, 2010

Room Block Housing Form – Orlando, FL – GCSAA Education Conference & Golf Industry Show – February 5, 2011 – February 13, 2011

PLEASE NOTE! THERE IS A NEW ROOM BLOCK PROCESSING SYSTEM

The GCSAA Conference Events Team has been working with their new housing agency, Travel Planners (Golf Industry Travel in future references), for several weeks and are extremely impressed with their technology!

This is the link to the Connecticut GCSA chapter room block at the Rosen Centre Hotel for the 2011 Golf Industry Show: <https://www.tphousing.com/r/startres.asp?eicode=1980&attcode=1108>

You can make individual reservations in the block simply by clicking on "Make a Reservation" in the Individual Reservations box. This will take you quickly through the reservation process.

Please note you will need your credit card information. One night room + tax will be held as a deposit. The Rosen Centre has a sales tax of 12.5% + 1% additional tax.

CAGCS BOARD OF DIRECTORS
President – John Garcia
Vice President – Mark B. Mansur
Secretary – Donald Beck
Treasurer – Sean Flynn
Past President – Christian P. Mauro

COMMITTEE CHAIRPERSONS
Education – Eric Morrison, CGCS
Golf – Marc Weston
Membership – Stephen J. Curry
Scholarship & Research – Paul Bonini, CGCS
Social & Welfare – Stephen A. Smith, CGCS
Government Relations – Scott Ramsay, CGCS
Commercial Rep to Board – Michael Donahue
Class C Rep to the Board – Corey Schultz

METRO
Turf Specialists

Ernie Steinhofer, CGCS - 914-760-6112
Tim Joyce - 516-369-6747
Robert Steinman, CGCS - 914-588-0731
Dave Conrad - 914-490-3698

Customers, Our **Top** Priority

Danbury Office: Gary and Tom
203-748-4653

Scott Apgar, President
914-879-9357

www.metroturfspecialists.com

Bayer - Quali Pro - Aquatrols - Cleary - BASF - Lebanon - Emerald Isle - Egypt Farms

Joe Trosky
Turf & Golf Specialist

Valley Green Incorporated

phone 800.862.0089
fax 860.741.1017
cell 860.508.9875

642 South Summer Street
Holyoke, MA 01040
www.valleygreenusa.com

Grass Seed • Fertilizer • Chemicals • Erosion Control • Organics

GOLF IRRIGATION SERVICES, inc.
Art de Atienza
President

Irrigation Systems Specialist

23 Pease Farm Road
Ellington, CT 06029
E-mail: adeatienza@sbcglobal.net

860-528-5615
Fax 860-896-0707
Cell: 860-841-9068



2010 New England Team Champions Connecticut AGCS

Marc Weston, George Harris, Heather Garvin, Steve Curry, Peter Gorman, Matt Quinn, Todd Olovson & Paul Bonini, CGCS

ANDERSON TURF IRRIGATION, INC.

SPECIALIZING IN IRRIGATION SYSTEMS FOR
Athletic complexes/Cemeteries
Commercial properties/Golf Courses
Residential properties/Tennis courts

Anderson Turf Irrigation is conservation-minded company and part of the green industry

P.O.B. 7036, 5 Cronk Rd.
Plainville, CT 06062
Phone: (860)747-9911
Fax: (860)793-2524
E-mail: andersont@snet.net
andersonturfirrigationonline.com
CT LIC # PLM.0208739
RI LIC # MI000063
NY Suffolk County LIC # 45841-RE & # 38977-RP

Mike Krudwig
Sales Manager
CAGCS/GCSAA Member

www.windingbrookturf.net
mkrudwig@windingbrookturf.net

WINDING BROOK TURF

Suffield, CT

Kennebunk, ME

Tel: (860)-529-6869
Cell (860)-883-0475
Fax (860)-529-6807

Corporate Office
240 Griswold Road
Wethersfield, CT 06109

Soil Solutions, LLC

Owned and Operated by
Aerification Professionals

FOR
TEES
GREENS
FAIRWAYS
ATHLETIC FIELDS

Our fleet has all of the
latest equipment to solve all your
turf needs

Hines * Drill Aerators
Hines * Drill & fill Aerators
John Deere * Aercore 1500 S
Soil Reliever 72 * Deep tine Aerators

7 Whittemore Place
Rye Brook, NY 10573
(914) 393-0659 • Fax: (914) 939-5010
Anthony DeCicco & John DeCicco

NORTHERN NURSERIES, INC.
Wholesale Horticultural Distribution Center

1320 Mountain Rd.
West Suffield, CT 06093
Phone: (860) 668-5225
Fax: (860) 668-5714

TERRY MISH
Manager

Cell: (860)748-1383

AMERICA'S BEST COLLEGE GOLF COURSE

By Sarah Scott, Yale Daily News

The Yale Golf Course was recently named America's best college golf course by Golfweek magazine. Yale Golf Course superintendent Scott Ramsay renovated the course after arriving in New Haven six years ago.

Yale has always been known for its architecture, from Sterling Memorial Library to the Yale Bowl. But a mere 12-minute drive from campus, there is an architectural gem of a different variety. Earlier this month, Golfweek magazine ranked Yale's golf course, The Course at Yale, the number one college golf course in the magazine's "Best Campus Courses" in 2010. "At Yale, the golf course is as good



as the education," said Scott Ramsay, the course's superintendant. Bradley Klein, Golfweek's architecture editor, said he and a team of 625 course evaluators stationed around the world rank golf courses in various categories. Klein has been in charge of "Golfweek's Best" for the last 16 years, he said. According to "Golfweek's Best Courses Rater Handbook 2010-'11," the evaluators judge courses based on 10 criteria, including the overall land plan, variety and memorability of various pars, conditioning, integrity of design (for classic courses) and quality of shaping (for modern courses). Golfweek's acknowledgement of Yale's course, which has also been ranked among the overall top 100 courses in the United States in various other publications, is another accolade for a course that already had a storied past.

BACK TO THE ROARING '20s

In 1924, Sarah Tompkins gave 700 acres of land to Yale in memory of her husband, Ray Tompkins, class of 1884. Yale employed United State Golf Association co-founder and legendary golf course architect Charles Blair McDonald to design each of the 18 holes. Famed golf course architects Seth Raynor and Charles Banks implemented McDonald's designs. The \$400,000 final product, which opened in 1926, was one of the most expensive golf courses ever built at the time, Klein said. Men's head golf coach Colin Sheehan '97 added that the course is a relic of the Roaring '20s, going hand-in-hand with Yale's other ambitious projects

of the time, including the residential colleges, the Yale Bowl and Payne Whitney Gymnasium. Peter Pulaski, director of golf operations at The Course at Yale, said the course is one of the best examples of early American golf architecture.

"I find it amazing that the people involved did what they did with very little modern machinery," Pulaski said. Klein said the architects adopted British and Scottish elements on an enormous piece of land with lots of rock, heavy soil and dramatic trees, resulting in a course of Gothic proportions. "There's nothing soft about it," Klein said. "It's very pronounced and theatrical." Furthermore, Klein said the top-quality course was designed for a top-quality golf program; Yale went on to win four NCAA championships in the 1930s.

TENDING THE GARDEN

Yet over time, the golf course lost its classical charm. Klein said the '80s and '90s were periods of modernization to a "softer, Florida look." In September 2003, Klein went as far as to say, the course in was "a landmark gone askew." Ramsay, who has studied golf course architecture for 20 years, came to the Yale golf course six years ago and began the on-going turnaround. "I took a photograph of [the golf course from] 1934, and I studied the bunker profiles, the tree lines, the fairway mowing lines and the shapes of the greens," he said. "I got a sense of what the original intent of the architect was." Sheehan said Ramsay restored the fairway and green sizes to their original specifications, solved drainage problems and cleaned up the tree lines. After trimming trees and mowing lines, Ramsay said he is still only halfway there. There is more tree work to complete, along with leveling tees, improving drainage and upgrading the agronomy. Klein said that in "Golfweek's Best" judging criteria, Yale has stood out in its conditioning — or quality of course maintenance. He said Ramsay, who won Golfweek's Superintendant of the Year award in 2006, understands the classical design of the golf course.

In particular, Klein said Ramsay has made the bunkers more severe and stark as opposed to the "Florida look." "We're a throwback," Ramsay said. "The course is not tidy and park-like. We let things get overgrown... This lends itself well to being very environmentally friendly." As to whether or not use of the golf course has increased as a result of the course's improvements, continued on page 11...

Now Available

1 mm Black Top Dressing Sand! Bulk/Bagged

Top Dressing Sand

- 1 mm
- 2 mm
- Green Divot Mix
- Bagged/Bulk Dried
- Top Dressing Blends

Bunker Sand

- Buff
- High Density
- Native

N.E.S.S.

New England Specialty Soils

Lancaster, MA

Sand Salt Mix • Ice Melt • Magic Salt

Lab ID No.	Sample	Soil Separate %			Sieve/Size Class/Sand Fraction/Sand Particle Diameter % retained					
		Sand	Silt	Clay	No. 10 Gravel 2 mm	No. 18 V. coarse 1 mm	No. 35 Coarse 0.5 mm	No. 60 Medium 0.25 mm	No. 100 Fine 0.15 mm	No. 270 V. Fine 0.05 mm
28212-1	1 mm Topdressing	99.6	0.1	0.3	0.0	4.0	32.7	43.3	16.1	3.5
Guidelines for topdressing sand			≤ 3%		0%	≤ 5%	≥ 60%		≤ 20%	≤ 5%

Ed Downing

TEL: 978-230-2300 • FAX: 978-466-1882

ed@nesoils.com • www.nesoils.com

tpc

turf products

For All Your Equipment & Irrigation Needs

Parts Direct: (800) 296-7442

Service Direct: (888) 442-9910

Main Office: (800) 243-4355

www.turfproductscorp.com

TORO

Count on it.

PROBLEM

Don't gamble with your underground tank



If you own or operate an existing Underground Storage Tank (UST) you may be faced with these common problems:

- Having to perform expensive upgrades to your aging UST
- Dealing with complicated rules, regulations and paperwork for your UST
- Facing a catastrophic, expensive clean-up from a leaking UST

Replace it with an Aboveground ConVault Tank!

Our ConVault Tanks are currently in operation at more than 80 golf courses in CT and RI.

SOLUTION

Please call Gregory Job, at United Concrete Products for more information!



United Concrete Products, Inc
173 Church St.
Yalesville, CT 06492
Gregory Job at ext. 44
(800) 234-3119
www.unitedconcrete.com



"Built to stand the test of time"

- Constructed of steel and housed in an attractive concrete vault
- Sizes from 250 Gallon to 12,000 Gallon
- Over 33,000 remain in service today without a single system failure
- Manufactured at our Wallingford, CT facility

continued from page 8...

Ramsay said the course play at Yale has held its own through the recession.

PLAYING THE GREEN

Ramsay and Pulaski's efforts have attracted top golfers to play for Yale. Klein said that regardless of where a golfer attends college, he or she develops an emotional relationship with the golf course. In the case of Yale, the course is unique because it syncs with the museum quality of the rest of the campus. Men's golf captain Tom McCarthy '11, who was named the Ivy League Player of the Year last year, said the accessibility of the course to campus, as well as the challenging nature of the course, were clinchers for him. "When you're playing a very hard course, you're more likely to get better," he said. "Princeton and Cornell have good courses, but ours is much more challenging."

McCarthy added the severe nature of the property, with elevation changes, gives off an intimidating visual appearance. Because golf

is a very mental and visual game, hazards and uphill shots may cause even the best players to make a mistakes. Women's golf captain Alyssa Roland '11 said the golf course at Yale helped her choose to between Yale and Harvard, as Harvard's course is farther away from campus and the school does not own it. "[The course] makes golf a whole new sport," Roland said. Women's golf coach Chawwadee Rompothong '00 said that while she did not think the golf course was necessarily the clincher for her players to attend Yale, the course experience, including an extremely supportive staff, made the course very attractive. "There is no question the course helps [to attract players]," Sheehan said. "The University is its own attraction for students, and then the golf course seals the deal." He added: "The design of the Yale Golf Course belongs in the elite echelon of golf architecture in America. It does deserve to be considered one of the top 20 courses in the country." Copyright 2010 Yale Daily News Publishing Company, Inc. All rights reserved. Printed with Permission.



Barrier NETTING AND POLES

www.mgcdevelopers.com
PO Box 280915, East Hartford, CT 06128
P#: 860.749.4434
F#: 860.290.8470
Email: info@mgcdevelopers.com

Design & installation of
Safety barrier netting & poles



Leggette, Brashears & Graham, Inc.

Professional Groundwater and Environmental Engineering Services

A Tradition of Excellence Since 1944

There's no substitute for experience

LBG is backed by over 60 years of experience, with a proven track record on golf course projects.

- Stream-flow impact assessments
- Water diversion permitting
- Irrigation and potable water-supply development
- Hydrogeologic testing and evaluations
- Stormwater runoff management and drainage design
- Pond design and permitting
- Site engineering and construction oversight
- Wash water treatment-system design and permitting
- Contamination assessment and remediation
- Expert testimony

www.lbgweb.com

Contact Rob Good at: (860) 678-0404 | (203) 929-8555

Member Since 2001

THE NORWICH GOLF COURSE
GOLF RESULTS, WEDNESDAY,
APRIL 28, 2010



1st Gross – 152
Shannon R Slevin - The Pine Orchard Yacht
& Country Club
Mike Dukette – Harrell’s

2nd Gross – 155
Eric Morrison – Shennecossett Golf Club
Ward Weischet – John Deere Golf

3rd Gross – 158
John Gallagher III – Race Brook
Country Club
Peter Bly – Brooklawn Country Club

1st Net – 134
Phil Neaton – Black Hall Club
Brian Skelly – Old Lyme Country Club

2nd Net – 135
Heather Garvin – Chas. C. Hart Seed Co.
Brian Giblin – Bayer Environmental
Science

3rd Net – 137
Jim Favreau – Turflinks, Inc.
David van Leeuwen – SePro
Corporation

Kickers – Mike Donahue – Phoenix
Environmental Care

Closest to the Pin
#9 - Heather Garvin – Chas. C. Hart
Seed Co.
#13 - John Gallagher III – Race Brook
Country Club
#15 - Keith Angilly – Mill River
Country Club
#18 – David Conrad – Metro Turf
Specialists

Long Putt
#9 - John Gallagher III – Race Brook
Country Club
#15 – Aaron Maher – New England
Turf, Inc.

Closest to the Line
#11 Kevin Collins – The Tradition Golf
Club at Wallingford

CAGCS MAY GOLF RESULTS
SCHOLARSHIP & RESEARCH
TOURNAMENT, WATERTOWN
GOLF CLUB, MON, MAY 17, 2010



1st Gross – 60

Michael Decker, Clinton CC
Michael Dukette, Harrells
Brian Pope, Turf Products Corp.
Gary DeVaux, Topstone GC

2nd Gross – 61

John Bresnahan, BASF
Mike Holton, Guest

3rd Gross – 61

Marc Weston, Indian Hill CC
Matthew Quinn, Indian Hill CC
Jeff Austin, guest
Frank Roback, guest

1st Net – 53

James Staszowski, Turf Products Corp.
Alexander Adaskaveg, Rockledge GC
Peter Bacon, Wyantenuck CC
Gary Henneberry, guest

2nd Net – 54**

Peter Grace, H. Smith Richardson GC
John Callahan, Cardinals, Inc.
Peter Lund, Allens Seed Store
Kevin D’Amico, Westwoods GC

3rd Net – 54**

Kevin Jaracy, Pequabuck GC
John Parmelee, Indian Springs GC
Carmine Matteo, guest
Spencer Baughn, guest

Long Drive, Hole #1
Justin Gabrenas, Lake Waramaug CC

Closest to the Line, Hole #10
Jeff Austin, guest

Closest to the Pin Hole #4 – 2’3”
Dennis DeSanctis, Syngenta

Closest to the Pin – Hole #15 – 3’7”
John Elliot, guest

CAGCS JUNE GOLF RESULTS
MILL RIVER GOLF RESULTS
JUNE 24, 2010



“A” Flight
1st Place Gross –
Mike Dukette, Harrells – 71
1st Place Net –
John Parmelee, Indian Springs GC – 65
2nd Place Net –
Mike Cravanvola, Guest – 70
3rd Place Net –
Eric Whitmore, New Haven CC – 73

“B” Flight
1st Place Gross –
Heather Garvin, Hart Seed – 82
1st Place Net –
Brian Pope, Turf Products – 72
2nd Place Net –
Carl Fappiano, East Haven
Landscape – 73
3rd Place Net –
Jason Booth, New Haven CC – 73

“C” Flight
1st Place Gross –
Scott Ramsay, The Course at Yale – 88
1st Place Net –
Jim Favreau, Turflinks – 71
2nd Place Net –
Mike McDermott, Twin Hills CC – 72
3rd Place Net –
Ben Nash, New Haven CC - 73

“D” Flight
1st Place Gross –
Peter Lund, Allens Seed - 87
1st Place Net –
Mike Donahue, Phoenix
Environmental – 70
2nd Place Net –
Bruce Morse, Norwich GC – 72
3rd Place Net –
Kevin D’Amico, Westwoods GC – 73

Closest to the Line, Hole #6
Fran Limone, guest

Longest Drive, Hole #16
John Wynne, Agrium Advanced Technologies

Longest Putt, Hole #9
Eric Whitmore, New Haven CC

Longest Putt, Hole #18
Brian Pope, Turf Products

Closest to the Pin, Hole #4
Carl Fappiano, East Haven
Landscape Products

Closest to the Pin, Hole #7
Rob Giampietro, Bull’s Bridge GC

Closest to the Pin, Hole #12
Rob Giampietro, Bull’s Bridge GC

Closest to the Pin, Hole #17
Dave Conrad, Metro Turf Specialists

INDIAN HILL COUNTRY CLUB
GOLF RESULTS, JULY 7, 2010,
BLIND DRAW TWO-MAN TEAM



1st Place Net - 61
David VanLeeuwen, SePro Corp.
Christopher Cowan, Atlantic Golf & Turf

2nd Place Net - 63
John Wynne, Agrium Advanced Tech.
James Favreau, TurfLinks, Inc.

3rd Place Net - 63
Shannon Slevin, Pine Orchard Yacht & CC
Paul Bednarczyk, Chas. C. Hart Seed Co.

1st Place Gross - 73
Matthew Quinn, Indian Hill CC
Anthony Grosso, Mohegan Sun CC
at Pautipaug

2nd Place Gross - 75
Todd Olovson, Sleeping Giant GC
Alexander Adaskaveg, Rockledge GC

3rd Place Gross - 77
Dana Woods, Guest
Kevin D’Amico, Westwoods GC

SKILL PRIZES

Closest to the Line
#7 - Ward Weischet, John Deere Golf

Longest Drive
1# - John Wynne, Agrium Advanced Tech.

Longest Putt

THE NORWICH GOLF COURSE
GOLF RESULTS, WEDNESDAY,
APRIL 28, 2010



1st Gross – 152
Shannon R Slevin - The Pine Orchard Yacht
& Country Club
Mike Dukette – Harrell’s

2nd Gross – 155
Eric Morrison – Shennecossett Golf Club
Ward Weischet – John Deere Golf

3rd Gross – 158
John Gallagher III – Race Brook
Country Club
Peter Bly – Brooklawn Country Club

1st Net – 134
Phil Neaton – Black Hall Club
Brian Skelly – Old Lyme Country Club

2nd Net – 135
Heather Garvin – Chas. C. Hart Seed Co.
Brian Giblin – Bayer Environmental
Science

3rd Net – 137
Jim Favreau – Turflinks, Inc.
David van Leeuwen – SePro
Corporation

Kickers – Mike Donahue – Phoenix
Environmental Care

Closest to the Pin
#9 - Heather Garvin – Chas. C. Hart
Seed Co.
#13 - John Gallagher III – Race Brook
Country Club
#15 - Keith Angilly – Mill River
Country Club
#18 – David Conrad – Metro Turf
Specialists

Long Putt
#9 - John Gallagher III – Race Brook
Country Club
#15 – Aaron Maher – New England
Turf, Inc.

Closest to the Line
#11 Kevin Collins – The Tradition Golf
Club at Wallingford

CAGCS MAY GOLF RESULTS
SCHOLARSHIP & RESEARCH
TOURNAMENT, WATERTOWN
GOLF CLUB, MON, MAY 17, 2010



1st Gross – 60

Michael Decker, Clinton CC
Michael Dukette, Harrells
Brian Pope, Turf Products Corp.
Gary DeVaux, Topstone GC

2nd Gross – 61

John Bresnahan, BASF
Mike Holton, Guest

3rd Gross – 61

Marc Weston, Indian Hill CC
Matthew Quinn, Indian Hill CC
Jeff Austin, guest
Frank Roback, guest

1st Net – 53

James Staszowski, Turf Products Corp.
Alexander Adaskaveg, Rockledge GC
Peter Bacon, Wyantenuck CC
Gary Henneberry, guest

2nd Net – 54**

Peter Grace, H. Smith Richardson GC
John Callahan, Cardinals, Inc.
Peter Lund, Allens Seed Store
Kevin D’Amico, Westwoods GC

3rd Net – 54**

Kevin Jaracy, Pequabuck GC
John Parmelee, Indian Springs GC
Carmine Matteo, guest
Spencer Baughn, guest

Long Drive, Hole #1
Justin Gabrenas, Lake Waramaug CC

Closest to the Line, Hole #10
Jeff Austin, guest

Closest to the Pin Hole #4 – 2’3”
Dennis DeSanctis, Syngenta

Closest to the Pin – Hole #15 – 3’7”
John Elliot, guest

CAGCS JUNE GOLF RESULTS
MILL RIVER GOLF RESULTS
JUNE 24, 2010



“A” Flight
1st Place Gross –
Mike Dukette, Harrells – 71
1st Place Net –
John Parmelee, Indian Springs GC – 65
2nd Place Net –
Mike Cravanvola, Guest – 70
3rd Place Net –
Eric Whitmore, New Haven CC – 73

“B” Flight
1st Place Gross –
Heather Garvin, Hart Seed – 82
1st Place Net –
Brian Pope, Turf Products – 72
2nd Place Net –
Carl Fappiano, East Haven
Landscape – 73
3rd Place Net –
Jason Booth, New Haven CC – 73

“C” Flight
1st Place Gross –
Scott Ramsay, The Course at Yale – 88
1st Place Net –
Jim Favreau, Turflinks – 71
2nd Place Net –
Mike McDermott, Twin Hills CC – 72
3rd Place Net –
Ben Nash, New Haven CC - 73

“D” Flight
1st Place Gross –
Peter Lund, Allens Seed - 87
1st Place Net –
Mike Donahue, Phoenix
Environmental – 70
2nd Place Net –
Bruce Morse, Norwich GC – 72
3rd Place Net –
Kevin D’Amico, Westwoods GC – 73

Closest to the Line, Hole #6
Fran Limone, guest

Longest Drive, Hole #16
John Wynne, Agrium Advanced Technologies

Longest Putt, Hole #9
Eric Whitmore, New Haven CC

Longest Putt, Hole #18
Brian Pope, Turf Products

Closest to the Pin, Hole #4
Carl Fappiano, East Haven
Landscape Products

Closest to the Pin, Hole #7
Rob Giampietro, Bull’s Bridge GC

Closest to the Pin, Hole #12
Rob Giampietro, Bull’s Bridge GC

Closest to the Pin, Hole #17
Dave Conrad, Metro Turf Specialists

INDIAN HILL COUNTRY CLUB
GOLF RESULTS, JULY 7, 2010,
BLIND DRAW TWO-MAN TEAM



1st Place Net - 61
David VanLeeuwen, SePro Corp.
Christopher Cowan, Atlantic Golf & Turf

2nd Place Net - 63
John Wynne, Agrium Advanced Tech.
James Favreau, TurfLinks, Inc.

3rd Place Net - 63
Shannon Slevin, Pine Orchard Yacht & CC
Paul Bednarczyk, Chas. C. Hart Seed Co.

1st Place Gross - 73
Matthew Quinn, Indian Hill CC
Anthony Grosso, Mohegan Sun CC
at Pautipaug

2nd Place Gross - 75
Todd Olovson, Sleeping Giant GC
Alexander Adaskaveg, Rockledge GC

3rd Place Gross - 77
Dana Woods, Guest
Kevin D’Amico, Westwoods GC

SKILL PRIZES

Closest to the Line
#7 - Ward Weischet, John Deere Golf

Longest Drive
1# - John Wynne, Agrium Advanced Tech.

Longest Putt

#13 - James Favreau, TurfLinks, Inc.
#14 - Christopher Cowan, Atlantic
Golf & Turf

Closest to the Pin
#3 - Eric Whitmore,

#5 Closest to the Pin
Eric Whitmore, New Haven CC

#11 Closest to the Pin
Heather Garvin

#17 Closest to the Pin
Phil Neaton

CAGCS OCTOBER GOLF RESULTS
SUPERINTENDENT/ ASSISTANT
H SMITH RICHARDSON GOLF
COURSE MONDAY, OCT 4, 2010

● ● ● ● ● ● ● ● ● ● ● ● ● ● ● ●

2 Person Best Ball
Superintendent/ Assistant

1st Place Net 58
Shannon Slevin, Pine Orchard Yacht & CC
Joe McSherry, Pine Orchard Yacht & CC

2nd Place Net 59
John Napier, Stanley GC
Kevin DeVaux, Stanley GC
1st Place Gross 70
Les Kennedy, Jr. CGCS, Blind Brook Club
Mike Guinan, Blind Brook Club

2nd Place Gross 77
Keith Angilly, Mill River CC
Walter Wozniak, Mill River CC

NEW ENGLAND
SUPERINTENDENT’S
CHAMPIONSHIP RESULTS, LAKE
OF ISLE, WED, OCTOBER 6, 2010

● ● ● ● ● ● ● ● ● ● ● ● ● ● ● ●

Connecticut	147
The Cape	143
New England	136
Vermont	136
New Hampshire	135
Rhode Island	125

Sponsors	
Gordon Kauffman – Robin Hayes	45
Brian Giblin – Mark Mansur	33
Fred Montgomery – Melissa Gugliotti	23
Frank Savakis – John Ruzsbatzky	31

Closest to Pin
#2 George Fairbanks 3’6”

#7 Robin Hayes 7’5”
#11 Todd Olovson 9’9”
#16 Steve Gregg 19’1”

2010 MET AREA TEAM
CHAMPIONSHIPS,THE BRIDGE,
PAR 72, THURS, OCTOBER 7, 2010

● ● ● ● ● ● ● ● ● ● ● ● ● ● ● ●

Team Scores		Par 288
1st	GCSA of New Jersey	296
2nd	Connecticut AGCS	301
3rd	MET GCSA	304
4th	Long Island GCSA	308
T5th	Philadelphia AGCS	310
T5th	Hudson Valley GCSA	310
7th	GCSA of New England	311
8th	GCMA of Cape Cod	314
9th	Central New York GCSA	315
10th	Mid-Atlantic AGCS	317
11th	Central Penn GCSA	320
12th	Rhode Island GCSA	327
13th	Northeastern GCSA	337

Skill Events
Closest to the pin hole #2, sponsored by
Syngenta: Jim Swiatlowski – GCSA of New
Jersey

Closest to the pin hole #5, sponsored by
Bayer: John Winterhalter – Central NY
GCSA

Closest to the pin hole #14, sponsored by
BASF: Paul Wickey – Central Penn GCSA

Closest to the pin hole #16, sponsored by
Toro: Frank Franceshini – Long Island GCSA

Long Drive
Net Division sponsored by The Care of
Trees: Tony Gustaitis – Philadelphia AGCS



Pictured (L to R) - Doug Zitnay, Great River CC; Richard Duggan, The Patterson Club; Ben Newfang, TPC River Highlands; Chris Knapp, H.B. Brownson CC; Mike Morawski, Indian Hill CC; Kevin Immohr, Lake Waramaug CC; Ben Goossen, The Patterson Club; Noel Hall, TPC River Highland; Matt Quinn, Indian Hill CC; Mike Pieri, Glastonbury Hills CC; Steve Winiarski, Shuttle Meadow CC; Richard Kremer, Hop Meadow CC; Rob Capecelatro, Great River CC.

Gross Division sponsored by Agrium Adv.
Tech.: George Corgan – MET GCSA

Sponsors Division, sponsored by Aquatrols:
Dennis DeSanctis - Syngenta

Individual Gross
Chris Tufts – Cape Cod GCSA Score of 78

Sponsorship Team Winner
Kevin Collins and Kevin Seibel
from Aquatrols Score of 70

Two Man Team High Score
Gross – Mike Cornicelli & Mike
Whitehead – RI GCSA Score of 90

Net – Steve Thys & Matt Crowther - Cape
Cod GCSA Score of 82

CLASS C TOURNAMENT -
INDIAN HILL COUNTRY CLUB -
OCTOBER 27, 2010

● ● ● ● ● ● ● ● ● ● ● ● ● ● ● ●

WINNERS	
1st Gross	Matt Quinn - 68
2nd Gross	Mike Morawski - 86
1st Net	Noel Hall - 67
2nd Net	Rich Duggan - 71
Closest to Pin #5	Noel Hall - 4’8”
Closest to Pin #17	Mike Pieri - 11’3”
Long Drive	Ben Goossen
Longest Putt	Rob Capecelatro - 26’1”

Thank you to the followings sponsors of
this event - Atlantic Golf & Turf, Bayer
Environmental, Chas. C. Hart Seed,
Harrell’s & Tom Irwin.

#13 - James Favreau, TurfLinks, Inc.
#14 - Christopher Cowan, Atlantic
Golf & Turf

Closest to the Pin
#3 - Eric Whitmore,

#5 Closest to the Pin
Eric Whitmore, New Haven CC

#11 Closest to the Pin
Heather Garvin

#17 Closest to the Pin
Phil Neaton

CAGCS OCTOBER GOLF RESULTS
SUPERINTENDENT/ ASSISTANT
H SMITH RICHARDSON GOLF
COURSE MONDAY, OCT 4, 2010

● ● ● ● ● ● ● ● ● ● ● ● ● ● ● ●

2 Person Best Ball
Superintendent/ Assistant

1st Place Net 58
Shannon Slevin, Pine Orchard Yacht & CC
Joe McSherry, Pine Orchard Yacht & CC

2nd Place Net 59
John Napier, Stanley GC
Kevin DeVaux, Stanley GC
1st Place Gross 70
Les Kennedy, Jr. CGCS, Blind Brook Club
Mike Guinan, Blind Brook Club

2nd Place Gross 77
Keith Angilly, Mill River CC
Walter Wozniak, Mill River CC

NEW ENGLAND
SUPERINTENDENT’S
CHAMPIONSHIP RESULTS, LAKE
OF ISLE, WED, OCTOBER 6, 2010

● ● ● ● ● ● ● ● ● ● ● ● ● ● ● ●

Connecticut	147
The Cape	143
New England	136
Vermont	136
New Hampshire	135
Rhode Island	125

Sponsors	
Gordon Kauffman – Robin Hayes	45
Brian Giblin – Mark Mansur	33
Fred Montgomery – Melissa Gugliotti	23
Frank Savakis – John Ruzsbatzky	31

Closest to Pin
#2 George Fairbanks 3’6”

#7 Robin Hayes 7’5”
#11 Todd Olovson 9’9”
#16 Steve Gregg 19’1”

2010 MET AREA TEAM
CHAMPIONSHIPS,THE BRIDGE,
PAR 72, THURS, OCTOBER 7, 2010

● ● ● ● ● ● ● ● ● ● ● ● ● ● ● ●

Team Scores		Par 288
1st	GCSA of New Jersey	296
2nd	Connecticut AGCS	301
3rd	MET GCSA	304
4th	Long Island GCSA	308
T5th	Philadelphia AGCS	310
T5th	Hudson Valley GCSA	310
7th	GCSA of New England	311
8th	GCMA of Cape Cod	314
9th	Central New York GCSA	315
10th	Mid-Atlantic AGCS	317
11th	Central Penn GCSA	320
12th	Rhode Island GCSA	327
13th	Northeastern GCSA	337

Skill Events
Closest to the pin hole #2, sponsored by
Syngenta: Jim Swiatlowski – GCSA of New
Jersey

Closest to the pin hole #5, sponsored by
Bayer: John Winterhalter – Central NY
GCSA

Closest to the pin hole #14, sponsored by
BASF: Paul Wickey – Central Penn GCSA

Closest to the pin hole #16, sponsored by
Toro: Frank Franceshini – Long Island GCSA

Long Drive
Net Division sponsored by The Care of
Trees: Tony Gustaitis – Philadelphia AGCS



Pictured (L to R) - Doug Zitnay, Great River CC; Richard Duggan, The Patterson Club; Ben Newfang, TPC River Highlands; Chris Knapp, H.B. Brownson CC; Mike Morawski, Indian Hill CC; Kevin Immohr, Lake Waramaug CC; Ben Goossen, The Patterson Club; Noel Hall, TPC River Highland; Matt Quinn, Indian Hill CC; Mike Pieri, Glastonbury Hills CC; Steve Winiarski, Shuttle Meadow CC; Richard Kremer, Hop Meadow CC; Rob Capecelatro, Great River CC.

Gross Division sponsored by Agrium Adv.
Tech.: George Corgan – MET GCSA

Sponsors Division, sponsored by Aquatrols:
Dennis DeSanctis - Syngenta

Individual Gross
Chris Tufts – Cape Cod GCSA Score of 78

Sponsorship Team Winner
Kevin Collins and Kevin Seibel
from Aquatrols Score of 70

Two Man Team High Score
Gross – Mike Cornicelli & Mike
Whitehead – RI GCSA Score of 90

Net – Steve Thys & Matt Crowther - Cape
Cod GCSA Score of 82

CLASS C TOURNAMENT -
INDIAN HILL COUNTRY CLUB -
OCTOBER 27, 2010

● ● ● ● ● ● ● ● ● ● ● ● ● ● ● ●

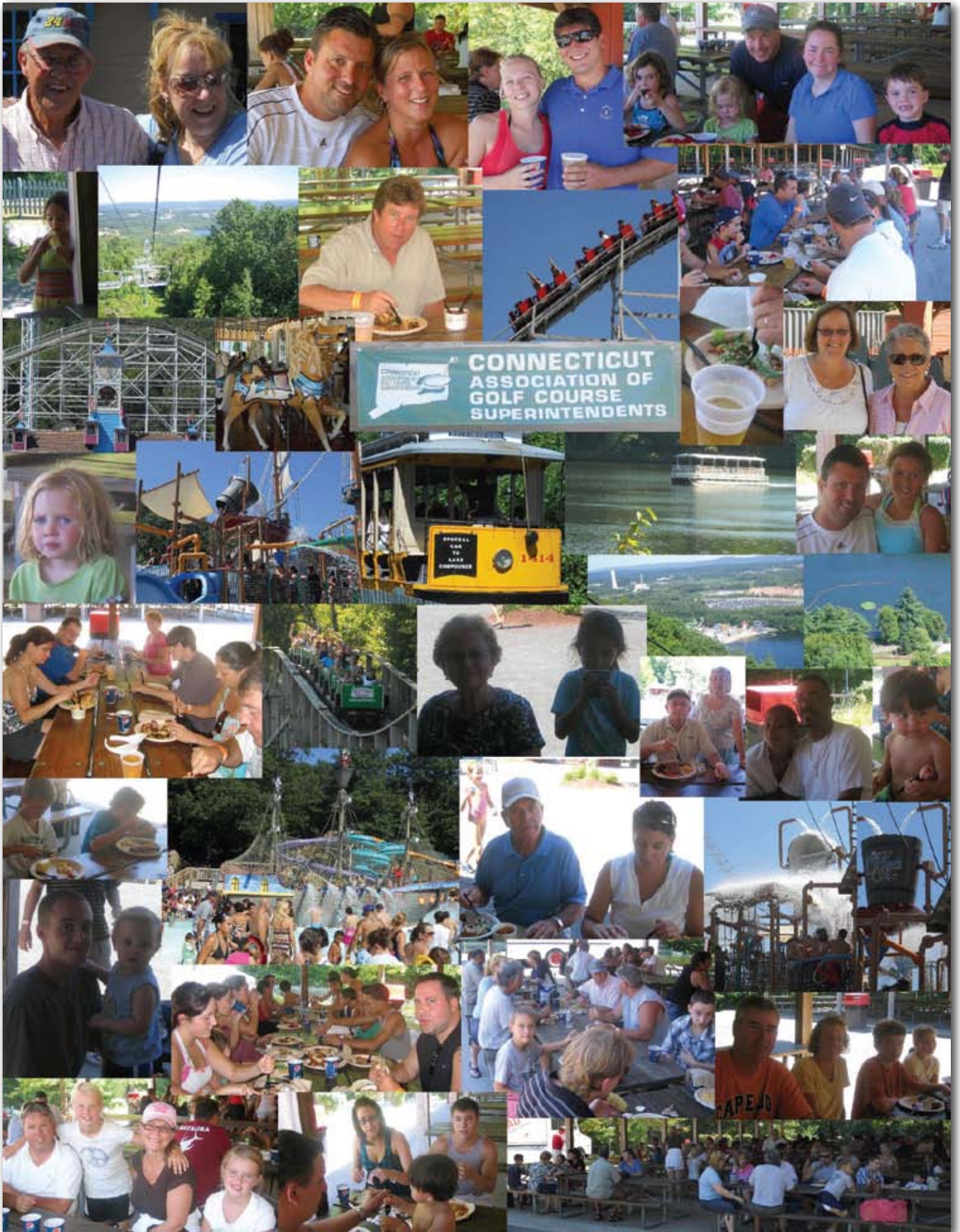
WINNERS	
1st Gross	Matt Quinn - 68
2nd Gross	Mike Morawski - 86
1st Net	Noel Hall - 67
2nd Net	Rich Duggan - 71
Closest to Pin #5	Noel Hall - 4’8”
Closest to Pin #17	Mike Pieri - 11’3”
Long Drive	Ben Goossen
Longest Putt	Rob Capecelatro - 26’1”

Thank you to the followings sponsors of
this event - Atlantic Golf & Turf, Bayer
Environmental, Chas. C. Hart Seed,
Harrell’s & Tom Irwin.

2010 Family Day - Lake Compounce - Sunday, August 29, 2010



2010 Family Day - Lake Compounce - Sunday, August 29, 2010



A-OK Turf Equipment

Lastec Articulator, Graden, Wiedenmann,
Pequea, Agrimetall, Baroness, Therrien, Sweep
& Fill, Blec. Michael Cornicelli (401) 826-2584
Fax (401) 826-3749 – aokturfequipment.com

Allens Seed

Seed, Fertilizer, Turf Supplies
Exeter, RI 02822
Al LaPrise
(401) 741-4444 - (800) 527-3898

Aquatrols Corp. of America

Innovative Products for Effective
Resource Management
Kevin P. Collins, N.E. Territory Mgr.
(609) 841-2077 (cell)

Bartlett Tree Experts

~Providing Scientific
Tree Care since 1907~
Matt Flanagan, Arborist
(203) 744-1400 or www.bartlett.com

BASF

47 Falmouth Road
Longmeddow, MA 01106
John bresnahan
(413) 565-5340

Bayer Environmental Science

Fairfield, Litchfield, New Haven Counties:
Dave Sylvester (860) 841-3173. Hartford, New
Haven, New London, Middlesex, Tolland,
Windham: Brian Giblin (508) 439-9809

BISCO

Irrigation Supplies featuring Rain Bird
60 Stergis Way, Dedham MA 02026
(800) 225-8006 - MA / (888) 522-9182 - CT
J. Anderson III cell: (203) 494-5217

C.R.I.S., LLC

Golf Course Irrigation
P.O. Box 6194
Wolcott, CT 06716
Troy Carney – (203) 879-2362

The Cardinals, Inc.

Complete Distributor of Golf Course
Accessories & Turf Maintenance Supplies
John Callahan cell – (860) 673-3699
cardinalsinc@att.net – (800) 861-6256

Championship Turf Services

Precision Laser Leveling
Custom Aerification - Overseeding
Sisis Turf Equipment
Michael Flowers (800) 562-5860

DGM Systems

Specialty Products Distributor For Golf & Sports Turf
Servicing Your Needs www.dgmsystems.com
Office (401) 647-0550 or (877) DGM Products
Manny (401) 524-8999 - David (401) 742-1177

D & S

Floratine – JRM
TURBODROP NOZZLES
Jerry Marin (203) 380-9503
Dave Basconi (860) 349-1291

DryJect N.E./TurfPounders

Dryject, Core & Deeptime Aeration
Kevin Collins (914) 525-3681
Home Office (914) 672-6029
Servicing CT & NY since 2004

Egypt Farms, Inc.

Sterilized Topdressing, Greensmix
Bagged Topdressing & Divot Mix
Dean Snyder
(800) 899-7645 FAX (410) 335-0164

Grigg Brothers Foliar Fertilizers

124 Vaughn Street
Albion, ID 83311
Gordon Kauffman, III, Ph.D.
(208) 227-7035 – gordon@griggbros.com

Harrell's

Jim Wierzbicki (860) 424-7250
Mike Dukette (860) 930-8888
Customer Service (800) 228-6656

The Chas C. Hart Seed Co.

Wethersfield, CT - Roy Sibley,
P. Bednarczyk, Heather Garvin
(860) 529-2537 or (800) 326-4278
Quality Since 1892

James Carriere & Son, Inc.

Bill Carriere (914) 937-2136
Trap Sand Partac Top Dressing
Const Mixes
Decorative Stone

Leggette, Brashears & Graham, Inc.

Professional Ground-Water and
Environmental Engineering Services
Office in Shelton & Farmington
Rob Good (860) 678-0404

Metro Turf Specialists

Customers, Our TOP Priority
Dave Conrad (914) 490-3698
Rob Steinman (914) 588-6593
(203) 748-4653 – metroturfspecialists.com

MGC Developers, LLC

P.O. Box 280915
East Hartford, CT 06128
Steven LaMesa – (860) 749-4434
email: info@mgcdevelopers.com

New England Specialty Soils

1mm + 2mm Top Dressing Sand, HD
Bunker Sand, Divot Blends, 5221 Mix,
Root Zone Blends. ed@nesoils.com
Ed Downing (978) 230-2300

Partac Golf Course Top-Dressing

(800) 247-2326 Fax (908) 637-8421
Bill Carriere (914) 937-2136
Joe Bidwell (860) 651-8555
Jim Wierzbicki (860) 424-7250

Phoenix Environmental Care

1002 Slater Street
Valdosta, GA 31601
Michael Donahue (860) 490-1929

Plant Food Company, Inc.

The Liquid Fertilizer Experts
Larry Pakkala, CGCS (203) 505-3750
Tom Weinert (914) 262-0111
Customer Service (800) 562-1291

Sodco, Inc.

P.O. Box 2
Slocum, RI 02877
Sean Moran
(800) 341-6900 - sodco.net

Steven Willand, Inc.

Jacobsen – Club Car – Smithco – Turfco
Parts/Service (203) 775-5757
Mark Osborn-Brett Armstrong
www.stevenwillandinc.com

Syngenta Professional Products

Fairfield County - Dennis DeSanctis
(732) 580-5514 - dennis.desanctis@syngenta.com
All other CT Counties - Melissa Gugliotti
(860) 221-5712 - melissa.gugliotti@syngenta.com

Terre Co.

206 Delawanne Ave. Clifton NJ
(973) 473-3393 FAX (973) 473-4402
Byron Johnson
Home (203) 748-5069

Tom Irwin, Inc.

Turf Management Products
Knowledge & Experience You Can Trust
Rob Larson (508) 789-0059
Jeff Houde (203) 731-1776 office (800) 582-5959

TurfLinks, Inc. Committed to your success!

Products, Equipment & Agronomic Services.
Jim Favreau (978) 815-9810
Carl Wallace (860) 558-6968

Turf Products Corporation

157 Moody Rd., P.O. Box 1200
Enfield, CT 06083
John Ferry - Mark Loper
(800) 243-4355

Westchester Turf Supply, Inc.

34 Years of Serving the CAGCS
Bob Lippman (914) 447-6257
Dave Lippman (914) 447-5192
Office (845) 621-5067 – westturf@comcast.net

Winding Brook Turf Farm

240 Griswold Rd.
Wethersfield, CT 06109
Mike Krudwig (860) 883-0475
kruds@comcast.net