

THE  
**GREENER SIDE**

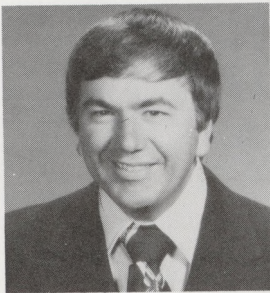
Vol. 3 No. 5

NOVEMBER 1980

**Nominees**

**1980**

**Nominees**



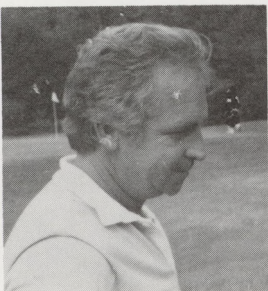
**Jack Martin  
President**

Jack has been the Superintendent at the Shackamaxon Country Club, Scotch Plains, New Jersey, for the past seven years. Previous to that, he served in the same capacity at the Suburban Golf Club, Union, New Jersey, for nine years.

He attended Seton Hall University and the Stockbridge School of Agriculture, University of Massachusetts, where he graduated in 1964 with an A.A. in Turf Management.

Jack's earlier involvement with the GCSANJ was in 1968-69 when he was voted to the position of Secretary. He became Vice President in 1970 and headed our group as its President from 1971 to 1972. He was again elected to the Presidency in 1980.

Jack, his wife Penny, and their three children reside in Westfield, New Jersey.



**Ed Nickelsen  
Treasurer**

Ed is presently finishing his thirteenth year at the Montclair Golf Club. He started in 1965 and only a two-year hitch in the U.S.

**Nominating Committee**

Skip Cameron - Chairman  
Mike Leary - District 1  
Larry Dodge - District 2  
Jerry Schoonmaker - District 5  
Phil Scott - District 7

**Dave McGhee  
Vice President**

Dave is the Superintendent at the Oak Hill Golf Club, Milford, New Jersey. This is his second term at his present club having directed the operation from 1963 to 1965 and from 1968 to present. He spent two years (1966-67) at the Squires Golf Club, outside Philadelphia, before returning to Oak Hill.

Dave is a graduate of the Penn State University Turf Program and presently serves as GCSANJ's Director from District 4. He accepted those same responsibilities during 1976-77 and was elected Treasurer in 1978 and again in 1979. Dave also served as Director of the Philadelphia Golf Course Superintendents in 1974-75.

Dave, his wife Judith, and their three children reside in Milford, New Jersey.



**Bob Ribbans  
Secretary**

Bob is finishing his first year as Superintendent at Fairmount Country Club, Chatham, New Jersey, after managing the golf course operation at the Roxiticus Golf Club, Mendham, New Jersey, for four years (1976-79). Bob is a graduate of the Rutgers Winter Turf Program (1972). He has served as Director of District 3 for the past two years and presently chairs the Public Relations and Ethics Committees.

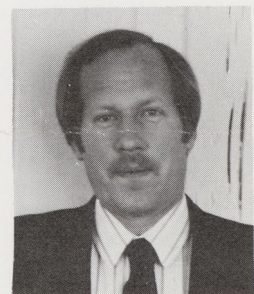
Bob, wife Helen, and one child live in Somerville, New Jersey.

Army (Sergeant) interrupted his stay. Ed worked two years on the Course Maintenance Staff before moving up to the Assistant's position in 1967. He held those responsibilities through 1968 until Uncle Sam called. Upon returning in 1970, he was offered and accepted the position of Superintendent which he presently maintains.

Ed graduated from Oswego State University in 1965 with a B.S. in education and enhanced his turf education by attending the Rutgers Winter Turf Program where he graduated in 1966.

He is presently the GCSANJ Treasurer, a position he also held from 1974-77.

Ed, wife Kathy, and one child live in West Orange, New Jersey.





## the GREENER SIDE

GCSANJ Newsletter is published six times a year by the Golf Course Superintendents Association of New Jersey, P.O. Box 231, New Brunswick, N.J. 08903.

**Ed Walsh, Editor**  
**Michael Hannigan,**  
**Associate Editor**

**Jerry Schoonmaker, Photography**

Please address inquiries concerning advertising to:

**Ken Kubik, Advertising Manager**  
489 Millbrook Avenue  
Randolph Twp., N.J. 07869



## GOLF COURSE SUPERINTENDENTS ASSOCIATION of NEW JERSEY

Cook College - Rutgers University  
Box 231  
New Brunswick, New Jersey 08903

### OFFICERS OF GCSANJ

**Jack Martin**  
President

**Dennis Wagner**  
Vice President

**James Gilligan**  
Secretary

**Edward Nickelsen**  
Treasurer

**Maurice Cameron**  
Past President

### EXECUTIVE BOARD

**Clifford Belden**  
Director, District 1

**Glenn Gallion**  
Director, District 2

**Robert W. Ribbans**  
Director, District 3

**Dave McGhee**  
Director, District 4

**Jerry Schoonmaker**  
Director, District 5

**Charles Dey**  
Director, District 6

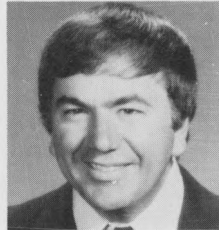
**Stephen Finamore**  
Director, District 7

**James W. Ritter**  
Director, District 8

**Dr. Henry Indyk**  
Executive Director

## President's Message

Jack Martin



Gentlemen:

It has been a long and difficult year on the golf course. Now that the year is coming to a close, hopefully we can devote more time to our Association.

When elected last year, I made several promises to you, the membership. The new officers made a similar commitment to try to improve our Association. It is our feeling that we have fulfilled those commitments. The communication gap has been bridged, our newsletter is now one of the best in the country. We had an effective education program highlighted by Dr. Vasvary and Dr. Smiley. The President of the G.C.-S.A.A., Mel Lucas, also spoke to us. We worked long and hard to see that Joe Flaherty received the proper recognition for the U.S. Open. Bob Dickison and our Association received recognition at the L.P.G.A. Coke Classic. Ed Nickelsen was presented a plaque in the closing ceremonies at the State Open.

I am sure that you will be impressed with the new by-laws when they are presented. The new roster should be in your hands any day now. Our "field day," according to both Superintendents and Exhibitors, was the best ever. It was also our best financially. We expect the Christmas party to surpass all others, also.

It is now time when you as members must decide whether you are satisfied with our performance and want to continue with the progress we have made. The Nominating Committee has selected a slate that will continue with the commitment to improve our Association and work hard toward that end. I urge that you all come out and vote at the Annual Meeting on December 2, 1980. There was a lot of excitement at last year's meeting, and there is a strong possibility that we can look forward to a similar meeting this year.

Jack Martin  
President



## From the Editor's Desk

The Nominating Committee has chosen its 1981 executive slate and the "Greener Side" compliments their selections. Jack Martin, Dave McGhee, Ed Nickelsen, and Bob Ribbans have all shown that they can and will do the job. All have extensive Board experience and have been a major part of the improvements our Association is making.

Never, in my experience, has the GCSANJ been as productive as we have been in 1980. With major assistance from the 1981 nominees, our newsletter is improving, the district concept has been improved and should be accepted, and the field day was the most successful we experienced in some time. We have also noticed a change in attitude toward our professional image.

The attempt to improve the recognition of one of our peers through the USGA during the 1980 U.S. Open was a step no one dared take before. But a step, nonetheless, long overdue. The Invitational was our most successful and was attended by all the nominees. Their commitment to improve and strengthen our Association must not go overlooked. They have led us in a progressive direction in 1980; it is time to show our support and elect them to lead us again in 1981.

## Dates to Remember

December 2

Annual meeting - Disti's Mountainside Inn, Mountainside, N.J.

December 5

Christmas Party - Shackamaxon Country Club, Scotch Plains, N.J.

December 8-11

New Jersey Turfgrass Expo '80 - Cherrhill Hyatt House, Cherry Hill, N.J.

January 25-30

GCSAA International Conference, Anaheim, California

# grass roots

turf products, inc.

**You can't grow GRASS without ROOTS**

**KEN KUBIK**  
(201) 361-5943

**BERT JONES**  
(201) 686-8709

# LETTERS TO THE EDITOR

Dear Ed:

Upon reading the September-October edition of "The Greener Side" and the article on G.C.S.A.N.J. Seeks Recognition, I would like to congratulate our President, Jack Martin on his concern for our image and his fine letter to the USGA President, Will Nicholson, Jr.

However, I was appalled at Mr. Nicholson's reply to Mr. Martin's letter.

It is hard for me to comprehend that an organization like the USGA which realizes a lot of revenue from its member clubs for its Green Section services, can be so narrow-minded in its thinking.

I think that all subscribing clubs to the Green Section should unite and demand more recognition for the Superintendent or possibly give thoughts of discontinuing their membership in the USGA Greens Section.

Sincerely,  
Peter L. Pedrazzi, CGCSA  
Crestmont Country Club

TO: Editor, Greener Side  
SUBJECT: GCSANJ Presidential Elections

Ed, since the nominating committee of GCSANJ does not think that the by-laws allows for two names on their official association ballot I will be accepting the nomination for President from the floor at the Annual meeting on Dec. 2, 1980. Should you require any additional information feel free to contact me.

Thank you,  
Dennis L. Wagner  
VP GCSANJ

SUBJECT: Comments from the Nominating Committee Chairman  
TO: Mr. Ed Walsh, Editor of the "Greener Side"  
FROM: Skip Cameron, Chairman of the Nominating Committee  
DATE: November 5, 1980

Previously, correspondence was mailed to you indicating the choice of officers nominated by the nominating committee. This choice remains unchanged. Recently a member of the board (Dennis Wagner) has been making outlandish allegations of this committee and I would like to refute them.

A statement was made to the effect that our slate is illegal because it was prepared prior to the first week in November, as stated in the by-laws. This point was directed to the By-Law Committee Chairman (Ed Nickelsen) and Parliamentarian (Cliff Belden) for consideration and they ruled "that the intent of the By-laws was for the nominating committee to have a slate of candidates by the first week in November and not necessarily meet during the first week in November to prepare a slate. Their recommendation was there was no wrong doing and the board of directors could proceed with a decision." End of topic, right? Wrong. Dennis Wagner

now makes a campaign issue of this, but the very next sentence in the minutes reads, "The board of directors was in agreement with this decision and the slate submitted by the nominating committee stands." Dennis Wagner even voted in agreement but now it is an issue.

A statement was made to the effect that the nominating committee is illegal because we used odd numbered districts for the committee instead of even numbered. This means that last year's committee, and I guess, all the committees before that are illegal because, we only followed through with their precedent. This was discussed (but not recorded by the secretary) at a board meeting, and agreed that we would follow through with the same order of business as in the past. There were no dissenting arguments at the time. At this same board meeting it was decided that by preparing a slate early we would be able to include it in our newsletter. No dissenting arguments at the time. Now it is an issue.

Since Dennis is quoting the By-laws he failed to note that under Article No. 7, Section 1, Paragraph E, that the committee shall meet "for the purpose of preparing a slate of candidates." It is the committee's understanding that this is one slate, not two or more, but one slate that it will recommend to its membership. Dennis has requested that he be included on the slate but it is the opinion of the committee that he has been a constant source of dissension on the board and that this committee for the good of the association cannot recommend him for office.

## Field Day

The 16th Annual Turfgrass Equipment, Irrigation, Supplies Field Day was held at Rutgers University on October 7. The following figures are approximate: about 675 individuals visited 50 exhibitor booths and watched 42 equipment demonstrations. About \$3500 was realized by the GCSANJ from booth, demonstration, food, and fellowship drawing revenue.

The program was led off with an athletic field construction, renovation, and maintenance demonstration run by Dr. Henry Indyk and Paul Shanklin. This was followed by a tour of the exhibitor booths and equipment demonstrations.

The Chairmen of the Field Day were Skip Cameron of Canoe Brook C.C. and Tony Bifano of Mt. Ridge C.C. The host district was six of which Charles Dey of Springdale G.C. is the director. The host superintendent was Joe Spang of Rutgers G.C. The announcer, who was in excellent voice, was Warner Thurlow, the Senior County Agricultural Agent of Middlesex County. Thanks also must be accorded to Dr. Henry Indyk, the GCSANJ Executive Director; Jack Martin, the GCSANJ President; Fred Gruninger, the Director of Athletics for Rutgers University; and Paul Shanklin, the Rutgers University Grounds Supervisor. At least 20 others aided in producing the success of this function; this included wives and other GCSANJ members.

# HOW TO KILL AN ASSOCIATION

1. Stay away from meeting.
  2. If you come, find fault and never offer an alternative.
  3. Decline office or appointment to a committee.
  4. Get sore if you aren't nominated or appointed.
  5. After you are named, don't attend board or committee meetings.
  6. If you get to one, despite your better judgment, clam up until you get outside.
  7. Don't work if you can help it.
  8. Oppose all banquets, parties and shindigs as being a waste of the attendees' money.
  9. If everything is strictly business, complain that the meetings are dull and the officers belong to the old guard.
  10. Never accept a place at the head table.
  11. If you aren't asked to sit there, threaten to resign because you aren't appreciated.
  12. Don't pay your dues.
  13. Read mail from headquarters only now and then - never reply if you can help it.
- Copied ICGCS Newsletter

Did you know that if you wanted to irrigate your fairways with one inch of water that this would mean putting 27,450 gallons of water per acre!

# CUSHMAN TURFCARE

**Equipment to Increase  
Productivity and Improve  
Your Greens and Tees**

- TRANSPORTATION
- DUMPING
- AERATION
- TOP DRESSING
- SPRAYING
- SPREADING
- SCARIFYING

**Double  
Eagle**

(201) 521-2500  
GOLF AND  
INDUSTRIAL PRODUCTS  
Forsgate Drive, Jamesburg, N.J., 08831



## The First Four



Essex County CC



North Jersey CC



Copper Hill CC



Montclair GC

## 1980 GCSANJ Invitational

With 29 teams participating, the 1980 GCSANJ Invitational was our most successful ever. Host Superintendent Mike Hannigan, Manager Rich Yeomans, and Pro Art Marks, provided our field with total enjoyment from beginning to end. The course was in great shape, the food just super, and the pro shop always there when we needed help.

Essex County Country Club finished first at 14 under with North Jersey Country Club, Copper Hill Country Club, Montclair Golf Club, and Deal Country Club all finishing at 12 under with positions being decided on a match of cards. The only problem we had all day was credited to yours truly. I improperly marked the stroke holes on the Manasquan River Country Club card and didn't catch the mistake until the round was over. McNally, Thompson, Finney and Warms will not soon let me live this one down.

Of the 29 teams, eight were first time participants while 15 teams had played for the third year. We are already working on next year's location and should have a name by the annual meeting.

### FIRST -14

#### Essex County Country Club

Supt., John Schoellner; Pro, Roger Stone; Greens Chairman, Geoffrey Berrien; Pres., Raymond Troy.

### SECOND -12

#### North Jersey Country Club

Supt., Wayne Remo; Consultant, Jiggs Remo; Pres., Dr. Paternoster; Pro, Ray Ferguson.

### THIRD -12

#### Copper Hill Country Club

Supt., John Fenwick; Pro, Mike Amorelli; Grs. Chmn., Harold Bush; V. Pres., Dave McFadden.

### FOURTH -12

#### Montclair Country Club

Supt., Ed Nickelsen; Pro, Mike Stubblefield; Grs. Chmn., Robert Harmon; Golf Chmn., Rees Jones.

### FIFTH -12

#### Deal Country Club

Supt., Bill Martin; Pro, Mike Burke; Grs. Chmn., Tom Kiely; Grs. Comm., Don Corwin.



Tammy Brook's Team  
Led by Sabby DeFalco



Invitational Hosts  
Rock Spring Club



Oak Hill on the Green



Bamm Hollow Made A  
Run but Faded



Somerset Hills  
First Invitational Team

United States Championship golf in New Jersey is played on FERTL-SOIL BIODRESSING.

*Doesn't this tell you something important?*

**FERTL-SOIL** *Company*

673 NEW BRUNSWICK AVENUE  
RAHWAY, NEW JERSEY

Marty Futyma

Chip Smith

Dave Smith

## Golf Championship

Montammy Country Club was the site of the annual GCSANJ Golf Championship on October 9. The course and the weather were conducive to good golf. Ninety-two GCSANJ members and guests teed up on this fine Bergen County golf course. The superintendent's low gross honor was won by Ange Petraglia of Navesink C.C. with a 75. Ange edged out Larry Dodge of Madison G.C. by one shot, chipping in the cup on the eighteenth hole. Frank Leary of Andrew Wilson, Inc. won the low gross honor in the commercial division with a 79.

Mike Leary, the golf course superintendent, his assistant Jim Switlowsky, and the greens crew deserve the accolades of our association for their efforts to produce an excellently conditioned golf course. Thanks must also be accorded to the tournament director Ed Walsh of Ridgewood C.C. and his committee members, Pete Pedrazzi of Crestmont C.C., Bill Luthin and Rich Munkelt both of Ridgewood C.C., for producing a smoothly run tournament with a multitude of fine prizes. The results are as follows:

### GOLF COURSE

#### SUPERINTENDENT DIVISION

Low Gross - Ange Petraglia, Navesink C.C. 75;

#### A Flight Low Net:

- 1st - Larry Dodge, Madison G.C. - 68;
- 2nd - Wayne Remo, North Jersey C.C. - 70;
- 3rd - Paul Schurtz, Playboy C.C. - 73;

#### B Flight Low Net:

- 1st - Dave Harrison, Playboy C.C. - 68;
- 2nd - Mike Hocko, Navesink C.C. - 74;
- 3rd - Mike Leary, Montammy C.C. - 75;

#### C Flight Low Net:

- 1st - Bill Gaydosh, Edgewood C.C. - 64;
- 2nd - Jeff Wetterling, Forest Hill F.C. - 68;
- 3rd - Les Mickens, Passaic County - 68;

#### D Flight Low Net:

- 1st - John Schoellner, Essex County C.C. - 64;
- 2nd - Tony Bifano, Mt. Ridge C.C. - 80;
- 3rd - Mike Hannigan, Rock Spring C.C. - 81;

### COMMERCIAL

Low Gross - Frank Leary, Andrew Wilson, Inc. - 79;

#### Low Net:

- 1st - Ken Kubik, Grass Roots, Inc. - 67;
- 2nd - Larry Munther, Munther Spraying Service - 70;
- 3rd - Fran Berdine, O.M. Scott - 73;

### GUESTS

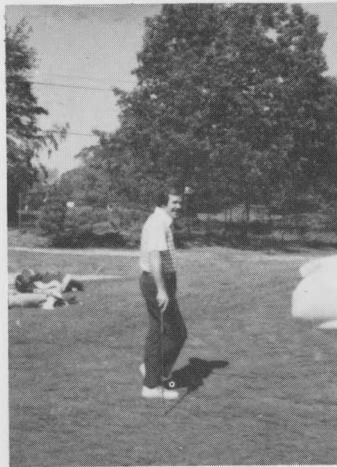
- 1st - Jim Switlowsky, Montammy C.C. - 71;
  - 2nd - M. Botton - 72;
  - 3rd - Rich Munkelt, Ridgewood C.C. - 72;
- LONGEST DRIVE - Wayne Remo, North Jersey C.C.

CLOSEST TO THE PIN - Sabby Defalco, Tammy Brook C.C.

In my yard the grass is high,  
Until the loud horse comes and eats it.  
It goes fast across the grass,

And cuts it so smoothly,  
And after its done it sits.

by Chris Walsh

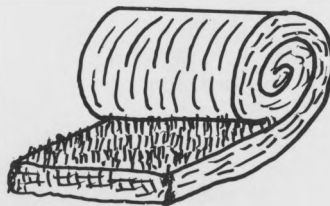


C Flight Winner, Bill Gaydosh

## Leon's Sod Farms

### INSTANT LAWN

MERION KENTUCKY BLUEGRASS BLENDS  
KENTUCKY BLUEGRASS MIXTURES



CERTIFIED SOD  
GROWN ON MINERAL SOIL

SAMUEL LEON

R.D. FRENCHTOWN, N.J. 08825

PHONE (201) 996-2255



A Flight Winner, lefty Larry Dodge

## CHIP SHOTS

Most carpenters build houses; this one trains golf course superintendents. Buck Carpenter of Braidburn Country Club has sent another son into the ranks of golf course superintendents. Scott Carpenter has been retained by the membership of Braidburn C.C. to be their golf course superintendent. Scott is the brother of Les Carpenter, the golf course superintendent at Picatinny G.C. Buck's youngest son is Steve, a landscape contractor who has also spent much of his life on the turfgrass his father has grown.

Larry Dodge of Madison G.C., Bill Ryan the club's pro, and two members combined to win a New Jersey PGA best ball event this summer.

Paul Boizelle of Fiddler's Elbow C.C. tree nursery was the subject of a feature article in the September 1980 issue of *Golf Course Management*.

Cliff Belden, Jr. has been retained by the Rockland Chemical Company of West Caldwell as a salesman.

Wayne and Jiggs Remo of North Jersey C.C. combined to take third place this year in the New Jersey Father-Son Tournament at Forsgate C.C.

Paul Schurtz has been retained as the golf course superintendent at the Playboy Resort and Country Club.

Congratulations are extended to Don Wilson, the Terre Company Sales Representative, for recently being awarded his Masters Degree in Turfgrass Science from Clemson University.



Wayne and Jiggs Remo, Third Place in N.J. Father-Son Championship



D Flight Winner, John Schoellner



## Team Championship

The first ANNUAL Met Area Team Championship was held on Tuesday, October 14, at the Blue Hill Golf Club, Pearl River, New York. Teams from the Long Island Golf Course Superintendents Association, Hudson Valley Golf Course Superintendents Association, Metropolitan Golf Course Superintendents Association, Connecticut Association of Golf Course Superintendents, and the Golf Course Superintendents Association of New Jersey were present.

The course was in magnificent condition and everyone wanted to know how host, Frank Bevelacqua kept it that way with over 55,000 rounds of golf per year. Joe Clark, Superintendent of Parks and Recreation for the Town of Orangetown, and Frank were a major reason this tournament went so well in its first attempt. They organized the entire day and everyone was totally appreciative.

Each association team had six players with the low four scores counting toward team total. C.A.G.C.S. won the team honors with a 320 score. H.V.G.C.S.A. finished a close second with a total of 324. Dave Roule took the individual honors with a 76 and Chuck Fatum and Sam D'Auria finished second with 78s.

This tournament was well-received and plans for next year's event are under way. Steven Cadenelli and his Country Club of New Canaan will host.



## Blue Hill G.C., Site of the 1980 Met Area Team Championship

### Team Championship Results

#### First:

C.A.G.C.S.A.  
 Fran Rodgers - 97  
 Frank Lamphier - 80  
 Pete Pierson - 79 320  
 Dick Cook - 85  
 Dave Roule - 76  
 Steve Cadenelli - 91

H.V.G.C.S.A.  
 Ed Walsh - 83  
 Fran Berdine - 84 324  
 Bruce Jensen - 86  
 Jerry Kane - 79  
 Sam D'Auria - 78  
 Ken Bartholomew -- 91

M.G.C.S.A.  
 Chuck Fatum - 78  
 Paul Petrarga - 80 329  
 Vinnie Pentenero - 88  
 Tony Savone - 91  
 Jim Fulwider - 83

L.I.G.C.S.A.  
 Pete Bass - 85  
 Richie McNabb - 87 335  
 Kay Ovian - 87  
 Angelo Scola - 81  
 Ennio Latini - 82

G.C.S.A.N.J.  
 Angelo Petraglia - 82 343  
 Larry Dodge - 86  
 Mel Somer - 89  
 Bill Martin - 86  
 Wayne Remo - 92  
 Jiggs Remo - 91

## FALLOUT

### VOLCANIC ASH WILL NOT HARM NORTHWEST SOILS

Volcanic ash deposits could create a few isolated salinity problems in drier areas of the Pacific Northwest, but should produce long-term benefits on land in humid areas, said Assistant Secretary of Agriculture for Natural Resources and Environment, M. Rupert Cutler.

A preliminary study of ash samples from eastern Washington following the eruption of Mount St. Helens revealed no higher concentrations of most potentially toxic elements than in ordinary soils, Cutler said.

U.S. Department of Agriculture's national soil survey laboratory found the ash samples contained less lead and cadmium than most soils, and only small amounts of fluorides, he said.

"We were afraid that sulfur in the deposits might produce strong acids," Cutler said, "but the laboratory found that the ash had little elemental sulfur. Instead, it contained gypsum, or calcium sulfate, possibly produced by sulfur reacting with volcanic glass."

Cutler said gypsum is harmless to soils and turf, and that subsequent wetting of the ash will complete the conversion to gypsum.

The laboratory measured the equivalent of 700 pounds of gypsum per acre per inch of volcanic ash in eastern Washington.

Salts equivalent to common table salt have been measured in concentrations as high as 500 pounds per acre per inch of ash, Cutler said. The initial flush of water moving through the salty ash could contain more salts than any of the irrigation water in the region, but the amount of salts is small and should be quickly removed by normal rainfall, he said.

"If the higher salt content is widespread," he said, "it could temporarily increase the salinity in small reservoirs and also could change the taste of water from shallow wells while the salts are flushing through the system."

USDA and other federal and state agencies will continue studies in the ash-affected region to discover the presence of any substances potentially hazardous to agriculture and water quality, Cutler said.



Team championship contestants Ed Walsh and Fran Rodgers.



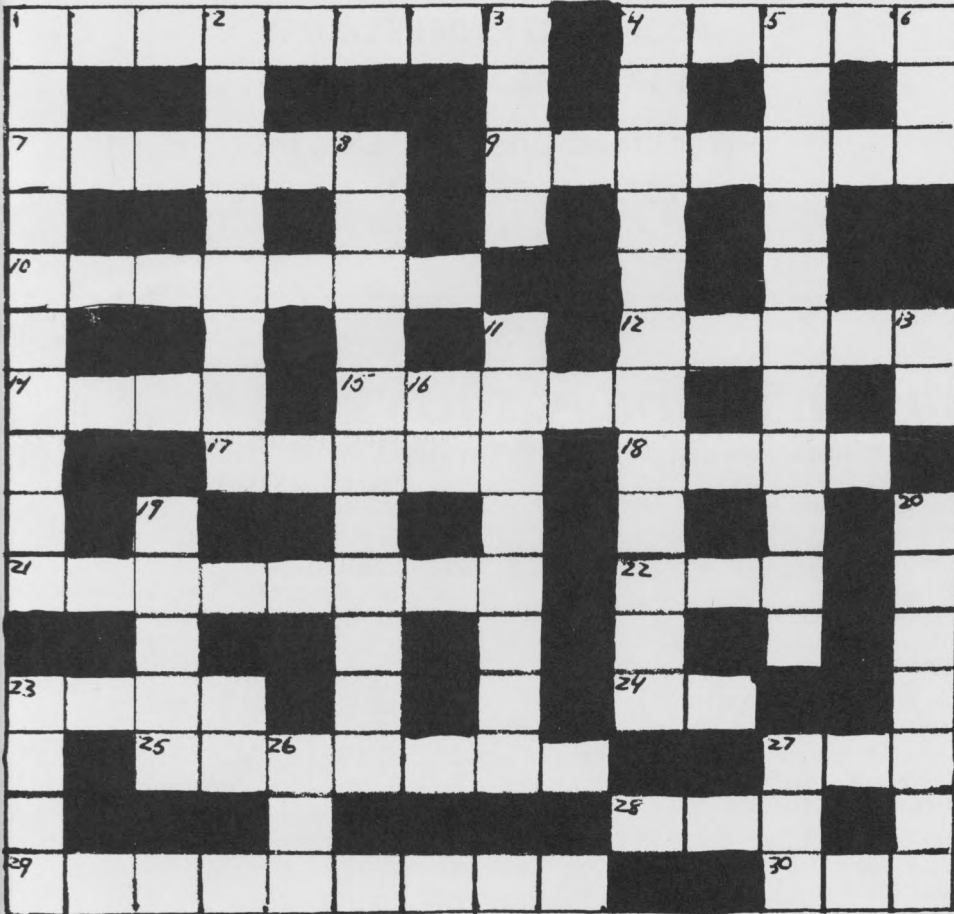
**ALPINE**  
TREE CARE, INC.

*Serving Northern New Jersey  
for 60 Years*  
**FULL SERVICE COMPANY**  
*Serving You With:*

- PRUNING      • REMOVALS
- BOLTING &   • SPRAYING
- BRACING   • CAVITYWORK
- insect control
- FERTILIZING
- disease control
- STUMP REMOVAL
- LIGHTING PROTECTION
- TREE CONSULTANTS

**(914) 948-0101**

# TURF TWISTER



ACROSS

DOWN

- 1) Nivale and Roseum
- 4) Sod Webworms often seen in this stage (PL)
- 7) One of LPGA's top players \_\_\_\_\_
- 9) Koban's Target
- 10) Annual Ryegrass
- 12) Plant food tubes from roots to leaves
- 13) Essential nutrient for Chlorophyll production (symbol)
- 14) Ferrous
- 15) How a Super feels after a budget meeting!
- 17) When chemical tank mixing there's no room for \_\_\_\_\_
- 18) Basic pesticide exam
- 21) Bluegrass underground lateral growth structure (PL)
- 22) N.J. Turfgrass Hall of Famer, \_\_\_\_\_ Cleary
- 23) Result of plant water imbalance
- 24) Rutgers Turf Professor (Initials)
- 25) 3336, 1991, and 26019 all control \_\_\_\_\_
- 27) Superintendent's nightmare
- 28) Engine food
- 29) These trees drop their leaves in Fall
- 30) A winter foe on turf

- 1) N-P-K
- 2) Sweet soil
- 3) Mecoprop
- 4) Tree and ornamental insecticide
- 5) Dylox and proxol (chemical name)
- 6) Winner of 1946 British Open, 1949 PGA, and 1952 Masters (first name)
- 8) Aramite miticide (you'll need your reference book for this one)
- 11) Bentgrass
- 16) Your answer to Assistant's request for a weekend off!
- 19) When a soil holds maximum water it has reached \_\_\_\_\_ capacity
- 20) Gypsum: Calcium \_\_\_\_\_
- 23) A plant out of place
- 26) Portable turf
- 27) Pressure unit

## JEP

Sales Inc.

**Specialists in  
TURF MAINTENANCE EQUIPMENT**

Jacobsen  
John Bean  
Bunton  
Gravely  
Yazoo  
E-Z Go  
National  
Smithco

**(609) 585-2300**

211 Yardville-Hamilton Sq. Rd.

P.O. Box 11126

Yardville, N.J. 08620

### Set Limits to Keep Sanity

If the old adage "the hurrier I go, the behinder I get" fits you, it may be time to re-examine your daily schedule. Take a close look at yourself, suggests James E. Van Horn, Extension family sociologist at Penn State. Try to figure out just why you are so busy.

Many people race the clock because they haven't set limits on activities. The time and energy they'd like to use for leisure or personal interests are eaten up by other commitments.

If you have the same problem, Van Horn says, "Evaluate your involvements and weed out those less important. Do you really need to be active in all those organizations? Do you have to take the children to every activity, lesson or show? Do you have to hold down that part-time job after work? Some of the answers may be 'yes' but many should fall in the 'not really essential' category."

Some people are busy as a way of avoiding personal relationships. If they spend every minute running from one activity to another, they don't have to worry about people getting too close to them. Then too, being busy is a good security blanket — hangups and fears can be hidden under constant "busyness," says Van Horn.



**"The Greener Side"  
Welcomes Our  
New Members**

Richard T. Broome  
Eugene G. Evans  
Ronald J. Ruppert  
Ingrid A. Kern  
Elliott Lewis  
Brian Jodoin  
Thaddeus Kabat  
Shaun M. Barry  
Jack Moody  
Joseph Gunson  
Fran J. Owsik  
Harry Harsin  
Robert Duncan  
Patrick K. Campbell  
Frances A. Caravella  
Robert Phoebus  
John B. Ward

**GOLF COURSE SUPERINTENDENTS WHO KNOW  
INSIST ON**

**ROCKLAND PROFESSIONAL  
TURFGRASS PRODUCTS**

**Rockland Chemical Co., Inc.**

Box 809, West Caldwell, N. J. 07006

(201) 575-1322

**THE GREENER SIDE PATRONS**

**ALAN G. CRUSE, INC.**  
Top Soil, Sand, Stone, Spar, & Humus  
Al Cruse  
(201) 992-2335

**ALPINE TREE CARE, INC.**  
Serving Northern N.J. for 60 years  
Bob Mullane - Gary Ritell  
(914) 948-0101

**AMERICAN TENNIS & TRACK, INC.**  
Repair and Construction -  
Tennis Courts and Running Tracks  
Harold G. Skinner  
(201) 778-1171

**ANDREW WILSON, INC.**  
Irrigation, Chemicals, Equipment  
Frank Leary  
(201) 654-5800

**ARTESIAN PUMPING SYSTEMS**  
Pumps for Watering Systems  
Peter J. Mauro  
(201) 845-7080

**AQUA-FLO, INC.**  
Irrigation Supplies  
Philip Demarco  
(609) 561-1777

**AQUATROLS CORPORATION  
OF AMERICA**  
Water Penetration Products  
Demie S. Moore  
(609) 665-1130

**BLUE RIDGE PEAT FARMS, INC.**  
Top Dressing, Peat, Humus, & Potting Soil  
Gene Evans  
(717) 443-9596

**BRUE DAN CORPORATION**  
Golf Cars & Industrial Vehicles  
Jake Kriney - Kent Williamson  
(914) 469-2275

**CONSOLIDATED STEEL &  
ALUMINUM FENCE CO., INC.**  
Eugene T. McLaughlin  
(201) 272-6262

**DOUBLE EAGLE GOLF &  
INDUSTRIAL PRODUCTS**  
The Cushman People  
(201) 521-2500

**FARM & GOLF COURSE  
SUPPLY CO., INC.**  
Turfgrass Supplies  
Anthony "Rip" Rippel  
(215) 483-5000

**FERTL-SOIL**  
Turfgrass Supplies  
Martin Futyma  
(201) 388-0100

**GRASS ROOTS TURF  
PRODUCTS, INC.**  
Turfgrass Supplies  
Ken Kubik (201) 361-5943  
Bert Jones (201) 686-8709

**GEO. SCHOFIELD COMPANY, INC.**  
Sand, Stone, Mulch Chips  
(201) 356-0858

**HALCO DIV. -  
WAGNER SEED CO., INC.**  
Turfgrass Supplies  
M.D. "Doc" Crawford  
(201) 625-4383

**JEP SALES, INC.**  
Turf Maintenance Equipment  
Jack Poksay  
(609) 585-2300

**KOONZ SPRINKLER SUPPLY  
COMPANY**  
Irrigation Equipment  
William Koonz  
(201) 379-9313

**LEON'S SOD FARMS**  
Certified Sod Grown on Mineral Soil  
Samuel Leon  
(201) 996-2255

**MONTCO PRODUCTS CORPORATION**  
Surf Side & Zap  
Robert Oechsle  
(215) 628-3144

**MOUNTAIN TURF PRODUCTS**  
Turfgrass Supplies  
Richard Grant  
(717) 646-7220

**O.M. SCOTT PROTURF**  
Fertilizer, Chemicals  
Fran Berdine (914) 361-4105  
Roy Griffiths (609) 228-1696

**PARTAC PEAT CORPORATION**  
Golf Course Top-Dressing  
James Kelsey  
(201) 637-4631

**PRO-LAWN-AGWAY**  
Fertilizer, Chemicals, Seed & Counsel  
Ingrid A. Kern (609) 877-4787  
Andrew Mulick (201) 967-9124

**ROCKLAND CHEMICAL CO., INC.**  
Turfgrass Chemicals & Fertilizer  
John Wittpenn  
(201) 575-1322

**STORR TRACTOR COMPANY**  
Turf Maintenance Equipment, Irrigation  
Paul Deschamps - Bob Dwyer  
(201) 232-7800

**THE TERRE COMPANY**  
Turfgrass Supplies  
Dennis DeSanctis - Donald Wilson  
(201) 473-3393

**TURF PRODUCTS CORPORATION**  
Turfgrass Supplies  
Ernie Rizzio - Gregg Hutch  
(201) 983-9333

**UNIVERSAL LABS-SOILS  
DIAGNOSTIC CENTER, INC.**  
Soil Analysis, Agricultural &  
Engineering Services  
Fred Porcello  
(201) 227-7167

**UPJOHN - TUCO COMPANY**  
Turfgrass Chemicals  
David Sylvester  
(203) 828-3790

**THE VAUGHAN-JACKLIN  
CORPORATION**  
Turfgrass Supplies  
Sky Bergen  
(201) 377-2054

**W.A. CLEARY CHEMICAL  
CORPORATION**  
Turfgrass Chemicals  
Clay Nelson - Shaun Berry  
(201) 247-8000

**WILFRED MacDONALD, INC.**  
Turf Maintenance Equipment  
James H. Pelrine  
(201) 471-0244