

Dates to Remember

November 17

Annual Meeting, Dasti's Mountainside Inn,
Route 22, Mountainside, N.J.

December 7-10

New Jersey Turfgrass Expo '81, Cherry Hill
Hyatt House, Cherry Hill, N.J.

December 19

Annual Christmas Party, Shackamaxon
C.C., Scotch Plains, N.J. Jack Martin,
Host; Bert Jones, Committee Chairman

January 28 - February 5, 1982

GCSAA Conference and Show, New
Orleans, La.

October 7 or 8, 1982

GCSANJ Fifth Annual Invitational Tour-
nament, Somerset Hills Country Club,
Bernardsville, N.J. Les Stout, Host

September 1983

GCSANJ Sixth Annual Invitational Tour-
nament, Essex County C.C. John
Schoellner, Host

1982 Executive Committee Nominees

The 1981 Nominating Committee has
submitted the following slate of officers for
your approval:

President	Ed Nickelson, Supt. Montclair Golf Club Montclair, N.J.
Vice President	Bob Dickison, CGCS, Supt. Upper Montclair Country Club Clifton, N.J.
Secretary	Bob Ribbans, Supt. Fairmount Country Club Chatham, N.J.
Treasurer	Ed Walsh, CGCS, Supt. Ridgewood Country Club Ridgewood, N.J.

Nominating Committee:

Skip Cameron, Chairman; Tony Bifano,
Dist. 2; John Fenwick, Dist. 4; Charlie
Edgar, Dist. 6; Jim Ritter, Dist. 8

GCSANJ 1982 Convention Voting Delegates

Delegate - Ed Walsh
Alternate - Pete Pedrazzi

ARE YOU READY FOR THE WINTER?

*Superintendents from around the Country Share Their
Ideas About Winter Preparations*

Sometime in September about 200 pounds of potash (muriate) per acre is applied to Barrington Hills (Ill.) Country Club's fairways. Snow fence for windbreaks is installed around certain tees and greens and all tees, greens and approaches are sprayed with fungicide in mid-November. Snow cover lasts from the first part of December until February and the temperature can drop as low as 25 degrees below zero. As much as 40 inches of snowfall is not uncommon. During the winter an ice sheet cover that lasts for a long time is a major concern.

— John C. Ebel

Hinckley (Ohio) Hills Golf Course closes approximately November 10, depending on the weather. Removing trees and draining the irrigation system are winter preparation priorities on the course. The pump house is winterized and the trees on the course are staked and mulched. Leaf removal is accomplished by blowing the leaves into windows in the roughs and then picking the leaves up with a sweeper or baling them with a hay baler. The leaves are stored and used for mulch.

— Donald E. Krush, CGCS

The Canton (Ohio) Public Golf Course uses temporary greens for two of their small greens from December to March if the course is open. This has helped alleviate snow and traffic damage on these two greens. The course receives approximately 30 to 40 inches of snow during the winter and temperatures may dip as low as 20 degrees below zero. The superintendent sprays for snow mold and also places fence around the greens and in front of the spring and the brook so that sleds won't damage the greens or get hurt themselves.

— Walter W. Lowell

The superintendent of City Park Golf Club, Pueblo, Colo., provides temporary greens for golfers by cutting back a 36-foot diameter area in mid-September. The area is topdressed and occasionally mowed at 1/4 inch. The course may get a freeze by mid-October and snowfall accumulations during the winter are only 24 to 36 inches. The superintendent irrigates as long into the fall as possible, usually through mid-November. Greens are watered every 10 days throughout the winter unless there is snow cover. Trees on the south side of greens are trimmed to allow as much sun

infiltration and subsequent snow melt as possible. As wear and tear on tees warrants, temporary tees also may be cut during the winter. Greens also are sprayed for snow mold control.

— Gary Uitt, CGCS

Areas about 30 feet in diameter are cut closer than the fairway grass in front of greens for temporary greens during the winter also at Fox Chapel Golf Club in Pittsburgh, Pa. Pins are placed on the temporary greens about Dec. 1. Aerification, snow mold control treatments and topdressing of greens are the principal concerns of the golf course superintendent there in his preparations for winter. The average winter snowfall is about 45 inches and temperatures may be 15 degrees above to 42 degrees below zero. All areas on the course are mowed until the grass is dormant.

— Joseph G. Baidy, CGCS

Wright Patterson Military Golf Course in Dayton, Ohio, also provides golfers with temporary greens. An area about 30 feet in diameter is mowed at 1/2 inch and topdressed around September. Snow covers the course only for about 20 to 25 days during the winter. Applying snow mold protection at the right time is the main concern of the superintendent of Wright Patterson. The applications are generally made in mid-December. Other preparations for winter include late fall fertilization of greens, tees and fairways and bringing in all supplies and course accessories for reconditioning.

— Richard L. Boehm, CGCS

Continued on page 3



Late fall aerification is one solid practice that helps control winter problems.

the GREENER SIDE

GCSANJ Newsletter is published six times a year by the Golf Course Superintendents Association of New Jersey, P.O. Box 231, New Brunswick, N.J. 08903.

Ed Walsh
Editor

Jerry Schoonmaker, Photography
Dennis DeSanctis, Special Projects

Please address inquiries concerning advertising to:

Ken Kubik, Advertising Manager
489 Millbrook Avenue
Randolph Twp., N.J. 07869



GOLF COURSE SUPERINTENDENTS ASSOCIATION of NEW JERSEY

Cook College - Rutgers University
Box 231

New Brunswick, New Jersey 08903

OFFICERS OF GCSANJ

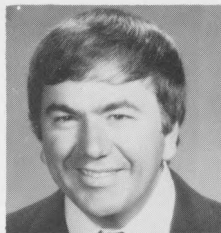
Jack Martin
President
Dave McGhee
Vice President
Bob Ribbens
Secretary
Ed Nickelsen
Treasurer
Maurice Cameron
Past President

EXECUTIVE BOARD

Ed Walsh
Director, District 1
Glenn Gallion
Director, District 2
Les Mickens
Director, District 3
John Fenwick
Director, District 4
Les Stout
Director, District 5
Charles Dey
Director, District 6
Stephen Finamore
Director, District 7
James W. Ritter
Director, District 8
Dr. Henry Indyk
Executive Director

President's Message

Jack Martin



Gentlemen:

It has been an honor and a pleasure to serve as your President for the past two years. They have been exciting for me and our Association. It is my feeling that excellent progress has been made in these past two years. The GCSANJ is now recognized around the country as one of the strongest and most progressive associations. Work on the water crisis has made us recognized as the leader in the golf industry in the Metropolitan area.

The following are some of the accomplishments attained over the past two years:

1. The treasury is in sound financial condition;
2. New Constitution, By-Laws and Standing Rules were written;
3. A new roster was published, with a new binder coming this year;
4. Finest newsletter in the country, The Greener Side, won national award last year and has a good chance to win this year;
5. Very successful Invitational Tournaments;
6. Field Days that surpassed all others;
7. Recognition at State Tournaments, L.P.G.A. Coke Classics and the U.S. Open;
8. Close contacts were made with the New Jersey State Golf Association, M.G.A. and U.S.G.A.;
9. Research monies were given to the Fairway Bentgrass Study overseen by Dr. Reed Funk and to Dr. Lou Vasvary for Dung Beetle research;
10. GCSANJ was the leader in the Green Industry Coalition and the Golf Industry Coalition;
11. Close contacts were made in Trenton with the D.E.P. and the Governor's Emergency Water Task Force. We made several presentations in Trenton and shall continue to proceed until we receive our fair share of water;
12. A complete research study and re-evaluation of the District Concept was made. It is my feeling that we still need revisions in the district alignment as it now stands.

Hopefully, these few accomplishments coupled with others have helped to improve our Association and profession.

My heartfelt thanks goes out to all our officers, board members, our Executive Director and you, the membership, who have made it all possible. I'm sure that the new officers and Board will continue to strive toward new and bigger goals for the improvement of our profession.

Again, thanks for giving me the honor to serve as your President during 1980 and 1981. My best regards to all of you and our Association in the future.

From the Editor's Desk



The past two years have seen our state association grow by leaps and bounds. We have taken on the position of leaders in our area. We are no longer the wait and see group we were in the past; we are now the trend setters.

I am not so foolish to suggest this has all developed by accident or that any individual has led us out of our rut. I do look toward our present leadership as the main reason for our collective success. Never in my 10 year experience with this association have I seen more accomplished. Never have I been more proud to wave the flag of my profession.

We have argued our points with the giants, the state D.E.P., the USGA, the GCSAA and more. When we knew we were right we didn't give in. We met every challenge.

It's this type of leadership that must continue if we are to grow. Districts must elect strong, aggressive, positive directors. Don't settle for anybody who will take the job, go out and get the best person for the job.

Let's put all our personality conflicts in the past and work as a collective group toward the future. We have everything to gain and equally everything to lose.

WANTED

ADVERTISING MANAGER

An opportunity to serve the state organization as the ad manager for the GREENER SIDE is available for 1982. This position offers the individual the opportunity to meet and communicate with international, national and local business that supply the materials and services required by the golf course maintenance industry. The only requirement is that you be a member of the GCSANJ. All interested parties should get in contact with Ed Walsh, editor, at (201) 652-1650 as soon as possible.

This publication aims to please everyone so if you find any gramaticle errors or mis-spelled woreds you can bet they are in there for a reason. Believe it or not some folks only read this newsletter in hopes of finding mistakes.

Ready for Winter?

Continued from page 1



Late fall fertilization and top dressing - strength and protection throughout the winter and a strong start in early spring.



The Country Club of Scranton, Clarks Summit, Pa., cuts a 1,000 to 1500 square foot circle in the fairways and the area is used for temporary greens. However, the temporary greens are used more in the early spring than during the winter. Snowfall averages 40 inches during the winter and temperatures can be as low as 20

degrees below zero. The superintendent aerifies in November and topdresses and overseeds when play has practically stopped for the season. Greens and tees are sprayed for disease prior to the first snow or by December 20. Desiccation is another concern of the superintendent because the winters are quite windy.

— William Lansdowne, CGCS

The Allentown (Pa.) Municipal Golf Course is usually closed for about 60 days during the winter. Greens are overseeded with Pennncross and no temporary greens are cut. Desiccation has been more of a concern to the superintendent than disease, although greens are sprayed about the middle of November. Last year the course remained open, weather permitting, during the winter and play on greens that are in the process of thawing has become a major concern.

— Frank J. Davitt, CGCS

Montague Golf club in Roxbury, Vt., is closed approximately five months during the winter. The first freeze can occur as early as mid-September and snowfall accumulations can be as high as 100 inches. Snow covers the course for about five months. Greens are overseeded with seaside and astoria bent and organic fertilizer is applied to greens in October. Antidesiccants, fungicides and topdressing are part of the superintendent's winter preparations. Ice that remains on the course longer than six weeks is removed if possible. Greens that are exposed to constant winter wind are lined with evergreen branches to keep snow from blowing off.

— Garry Crothers, CGCS

The Country Club of Peoria (Ill.) also overseeds greens but only in spots where turf was lost because of disease, wilt or some other problem. Assuring that the course has adequate moisture and applying a snow mold fungicide before the first snowfall are major concerns of the superintendent. Snowfall accumulations during the winter are about 25 inches. Snow usually covers the course from mid-December to early March. In addition to aerifying, the superintendent applies potash and iron to the greens in the fall.

— Dave Fearis, CGCS

The Highland Golf Club in Indianapolis, Ind., is closed during the winter for approximately 100 days. Greens are overseeded with Pennncross in May or June. The superintendent's major concern is the proper timing of snow mold fungicide applications. Freezing weather can occur as early as late September and continue as late as the end of May. Normally, however, the freeze period lasts from late October to mid-April.

— John L. Morris, CGCS

CREDIT: Golf Course Management, October 1980. Cora Ray, Writer.

The GREENER SIDE is not a copyrighted newsletter. When reprinting, please acknowledge the GREENER SIDE and author.

Nine Ways to Negotiate A Raise

Many people who have no trouble dealing with their superiors in most day-to-day situations find it very difficult to ask for a raise. If you're fainthearted at negotiation time, consider these recommendations to ease the process:

— Know your worth. Ask yourself how valuable you are to the course, how much it would cost to replace you, what have you done lately to help the organization.

— Pick your place. Get your boss outside of the office to listen to your request. Take him to lunch if possible.

— Detail your reasons. Tell your boss why you deserve a raise.

— Suggest an amount. You, not your boss, should propose the amount of your possible raise.

— Set your figures high. Ask for more than you expect to get. This leaves room to bargain.

— Compromise - but not too easily. Since you've started with a high figure, realize you probably won't get it. Let your boss make a counter-offer, and be ready to compromise.

— Rehearse. Don't go into negotiation cold. Be sure to be in top mental and physical condition when the actual talks begin.

— Get it in writing. If possible, get your boss to put it in writing - for both signatures - the raise he agrees to.

— Don't wait - ask. Don't wait around for the company to recognize your value and give you a raise. Ask for it. Your aggressiveness may pay off.

JAKE KRINEY
VICE PRESIDENT
KIRBY OVERTON
SALES REPRESENTATIVE

Golf Cars
and other
industrial
commercial
vehicles

BRUE **DAN CORP.**
GREYCOURT AVE.
CHESTER, N.Y. 10918
(914) 469-2275

GCSANJ 1981 INVITATIONAL

Montclair Golf Club and Ed Nickelsen hosted our 4th Annual Invitational Championship on September 24th. Although a conflict with the NJPGA limited the field to 24 teams, all involved enjoyed a great golf course and a first class club operation.

Although Montclair is not exceptionally long, Mother Nature did her best to make 380 yard Par 4's play like Par 5's. And Par 3's like Par 4's. Only Les Mickens and his group from Passaic County Golf Club managed to turn in a good team score, -13. My own Ridgewood Country Club played pretty consistent golf (thanks to Jack Collins, -76) and finished at -9 for second place. Fran Owsik's Colonia c.c. group started out strong, going seven under after nine holes only to be grabbed by the back

nine and finish at -8 for third place. Charlie Cross and his Rumson G.C. team made a formidable first attempt at the championship finishing at -7 for fourth place.

Ed had the golf course in perfect condition. His staff is to be highly commended for their efforts. General Manager, Bill Rohry, and his club house operation was second to none. Service was prompt and courteous with the buffet lunch and sit down dinner exceptional. A special thanks to Bob Harmon (President) and Rees Jones (Golf Chairman) for procuring Montclair for this year's event. We know everyone enjoyed themselves and are already looking forward to October 7th or 8th of 1982 when we visit Somerset Hills for our 5th Annual Invitational.



Upper left: Ridgewood C.C. and its second place team. Upper right: A mongrel group from? Lower left: Our host team departing from the seventh green (?). Lower right: The team from White Beeches didn't score too well but had a great time.



Winners - Passaic County G.C. - Al Dombroski, Les Mickens, Charlie Norris, and John Klusick.

Metropolitan Area Team Championship

Steve Cadenelli's Country Club of New Canaan, New Canaan, Ct., hosted the Second Annual Met Area Team Championship on September 23rd in great style. Somewhat inclement weather could not dampen the beauty of this fine lower Connecticut course. As Steve suggested, "It wasn't very long, but accuracy was necessary if a good score was to develop." As the final results indicate, not many of us were too accurate. Only Chuck Fatum (76), Peter Pierson (77) and New Jersey's own Angelo Petraglia (78) broke 80.

The MGCSA won going away with the CAGCS finishing second. As the results indicate, GCSANJ did not fare very well again this year. Jiggs Remo has promised to take personal responsibility for the GCSANJ teams of the future and suggests improvement is imminent.

Next year's event will be played at Ridgewood Country Club, Ridgewood, N.J.

Results

MGCSA

Chuck Fatum - 76 Low Gross
Scott Niven - 81
Jim Fulwider - 83
Tony Savone - 86
Dan Cancelleri - 89
Paul Petrarca - NC

326

CAGCS

Peter Pierson - 77
Dick Cook - 85
David Roule - 88
Greg Wojick - 86
Steve Cadenelli - 88
Jim Fabianni - 91

336

LIGCSA

K. Ovan - 84
A. Schovla - 86
P. Bass - 87
L. O'Neil - 87
R. Struss - 88
R. McGinnis - 93

344

HVGCSEA

S. D'Auria - 84
G. Kane - 87
E. Walsh - 88
D. Doyle - 90
F. Berdine - 91
G. Ulbrich - 99

349

GCSANJ

A. Petraglia - 78
S. Barry - 88
W. Remo - 94
F. Staats - 94
J. Remo - 96
S. Finamore - 97

354

Two caterpillars were crawling across the grass when a butterfly flew over them. They looked up, and one nudged the other and said: "You couldn't get me up in one of those things for a million dollars!"

"I must do something" will always solve more problems than "Something must be done."

Chip Shots

Joe Malakowski never slows down! He is now in the process of completing the changeover from a manual to an automatic irrigation system at the Alpine Country Club.

xxx

Bill Sica, healthy again, brought John Ackerman on board as Assistant Superintendent. John formerly worked at the Fairfax Country Club in Virginia.

xxx

District 6 has a new chain of command: Director, Dan McGlynn, Hopewell Valley G.C.; Assistant Director, Chip Kern, Torrendale-Frankford C.C.; Secretary, Don Sauvigne, Forsgate C.C.; Treasurer, Harold Snyder, Stony Brook C.C.

xxx

On October 20, John Klosiewicz (Superintendent), the Wildwood Country Club and District 8 hosted the State Meeting. An all-around excellent day was highlighted with a program on the Farmland Preservation Act which was voted on this November 3, 1981.

xxx

Al Beck, formerly Super at Green Tree C.C., is now at the Linwood Country Club working with Lou Vay.

xxx

District 8 held a District meeting at Pine Valley C.C. on November 9. A tour was the program for the day (what could be better!).

The conditions for the sale of Seaview C.C. were not agreed upon so we can all breathe a little easier for now.

xxx

Speaking of a sale - it's official, Forsgate C.C. is formally on the market.

xxx

The D.E.P. is still popping in on golf courses. The latest "hit" was Jim O'Gibney at Tara Greens Golf Course. A thorough going through of his chemical storage area produced some minor infractions, one being that there was no "chemical storage" sign outside the building. That's a NO-NO!

xxx

Roxiticus and Pennbrook C.C.s have recently opened their new clubhouses. Both were totally destroyed by fire last year.

xxx

The State's most eligible bachelor is getting married in 1982 - it is Gary Stedman of Battleground C.C.

xxx

Dave McGee of Fiddler's Elbow C.C. has been busy building a green, some tees, and would you believe - a bocce ball court.

xxx

Mike Hannigan of Lesco was down from Massachusetts representing his company at the GCSANJ Field Day.

xxx

A joint meeting with Districts 5, 6 and 7 was held at Copper Hill C.C. on Tuesday, October 27. Thirty people, including some local nurserymen and landscapers, attended. Dr. Vasvary and County Agent Richard Wagner spoke on Oftanol and Snow Mold. Thirteen brave souls played golf in spite of the threat of rain.

Turf Equipment - Used

- 1 - Jacobsen 7-gang fairway unit set; 6-blade; semi-pneumatic tires; good condition, \$2,000.00
- 1 - Jacobsen 5-gang Blitzer units with semi-pneumatic tires; fair condition, \$800.00
- 1 - National 84" mower with rebuilt steering; good condition, \$600.00
- 1 - Toro Pro 70" tee mower; fair condition, \$400.00
- 1 - Red Rider; 10 HP engine; (no battery), \$300.00
- 1 - Lely Spreader; PTO operated; fair condition, \$200.00
- 2 - Jacobsen 22" greens mowers, \$100.00 each
- 2 - Jacobsen 22" greens mowers with verticut reels, \$150.00 each
- 3 - Jacobsen Commercial 20 rotaries, \$75.00 each

Contact:

Jil Gilligan, GC Supt.
The Bedens Brook Club
Rolling Hill Road
Skillman, New Jersey 08558
609-466-1820

If anyone has any old Buckner No. 16 or Rainbird No. 66 valves they would like to sell, please call Charlie Cross of Rumson C.C. at 842-2576.

Commercial Clippings

It has been a very busy past few months for the Cruz's. Al and wife, Arlene, have become grandparents for the first time as son, Jim, and daughter-in-law, Brenda, have a new arrival, daughter Christina Marie on September 16th. The senior Cruz's also gained a son-in-law as daughter Joanne was married. Best of luck to all.

xxx

The Terre Company of New Jersey will hold a seminar day on December 2, 1981 at the Robin Hood Inn in Montclair. Technical presentations by Mobay, 3M, and Ciba-Geigy will be made on Bayleton, Oftanol, Embark, and Sud-Due. More info to follow.

xxx

Al Foster has accepted a sales position with Grass Roots. Al, former Super at Hackensack G.C., says the retired life is not for him. He will be visiting the Northeast-New Jersey areas.

xxx

Bill Feury and Dennis DeSanctis of Terre Co., Jack Wittpenn of Rockland Chemical, and Ken Kubik of Grass Roots attended Mobay Chemical's seminar on Oftanol and Bayleton in Kansas City last month.

Meet Your Commercial Rep

Jim Pelrine, President, Wilfred McDonald, Inc.

Jim was born and raised in Winthrop, Mass. He attended St. Dunstons University in Canada where he captained the varsity football team and also lettered in basketball.

Upon graduation in 1963, he moved to New Jersey to assume a position with his uncle's company, the present Wilfred McDonald Company. He started from the bottom learning each and every facet of the operation from repairs to parts and then on to sales and administration. As the company progressed so did Jim and when McDonald's incorporated in 1971, he became its president.

Jim is very active in youth organizations in his home town of Pompton Lakes. He coaches a junior ice hockey team and keeps himself in shape by playing hockey and jogging.

Editor's Note: The Greener Side will introduce one of our patrons in each of our future issues.

Dacthal Unavailable in 1982

An explosion July 22 at Diamond Shamrock's Greens Bayou Plant in Houston, Texas, caused extensive damage to the Dacthal Unit. Greens Bayou is the only Diamond Shamrock Plant worldwide that manufactures Dacthal, a pre emergence herbicide that controls weeds on turf, ornamentals and vegetable crops. As a result, Dacthal will not be available for the 1982 growing season.

Further information on the availability of Dacthal in the future will be forthcoming, according to company officials in the agricultural chemicals division.
CREDIT: Diamond Shamrock



P.O. Box 454
Basin Road, Hammonton, N.J. 08037

IRRIGATION, WASTE WATER SYSTEMS

TURF IRRIGATION EQUIPMENT

Royal Coach/Buckner
Nelson, Moody

AGRICULTURAL IRRIGATION EQUIPMENT

Ag Rain, Water Winch
Alumax/Western
Valley Pivot Systems
Race & Race
RIS Drip Systems

PIPE & FITTINGS

PVC — Polyethylene & Aluminum

PUMPS & ENGINES

Fabricated Automatic Pumping Systems
St-Rite, Marlow, Berkeley & Hale Pumps
Duets, John Deere & Ford

Philip DeMarco 609-561-1777



HAPPY HOLIDAYS

Don't Miss Your 1981 Christmas Party

For those who made last year's Christmas Party, we are sure you will be back. If you really had a great time, do us a favor and not only talk it up, but bring another couple with you!

Date: Saturday, December 19 (*Saturday night this year*)

Place: Shackamaxon Golf and Country Club
Scotch Plains, New Jersey

Time: 7:00 p.m. til 1:00 a.m.

Entertainment: The Soft Touch (*A great band to dance or just to listen*)

Food & Beverage: Hors d'oeuvres and dinner - *always great*
Open Bar from 7:00 p.m. to 1:00 a.m.

Price: \$70.00 per couple (*Same as last year*)

You really get your money's worth at this party. Please come this year and see.

Christmas Party Committee

New Jersey Turfgrass Expo '81

New Jersey Turfgrass Expo '81, scheduled for December 7-10 at the Cherry Hill Hyatt House, marks "The Dawn of the Second Decade" for the New Jersey Turfgrass Association. In cooperation with the turfgrass staff at Cook College, efforts have been combined in organizing an educational program and trade show which has a wide range of appeal to various turfgrass interests. The Program will include topics of general interest as well as those specifically oriented toward golf turf, lawns, and fields.

The "Kick-off" on Monday, December 7, will feature three Workshop Sessions which should whet-the-appetite of anyone associated with golf turf. Sessions of two hours each will include Diesel Engines, Irrigation Pumps, and Weed Identification.

Featured in the General Session on Tuesday, December 8, will be a keynote address by Dr. Jack Hall on the Future Of Turf; research reports on ryegrasses and thatch; Water Roundup-1981, and appropriately concluded with a discussion on adjusting to mental and physical stress. Information provided by the concluding topic would be most useful during the difficult Poa season.

The specific Golf Turf sessions will feature a panel on the design, construction, and maintenance of sand bunkers - an area

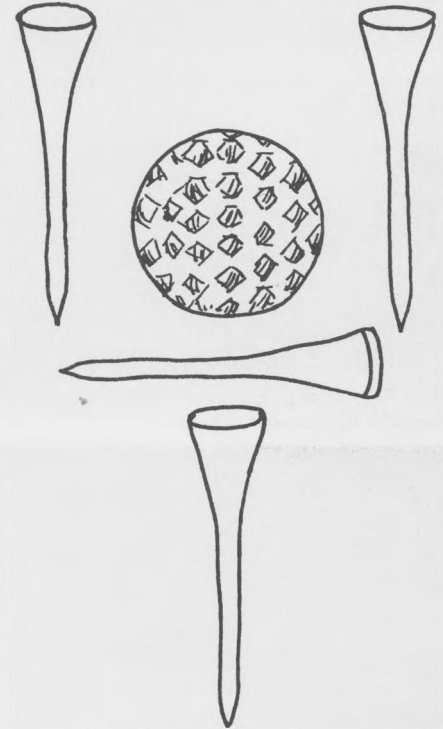
receiving a great deal of attention on many golf courses. Other topics will concentrate on topdressing, evaluation of new fungicides, liquid fertilization, trees, and the Assistant Superintendent.

Topics related to proper use of pesticides will be eligible for credits towards recertification. A Special Session on Thursday, December 10 will be conducted for Pesticide Applicator Certification. The Session will provide a one-hour training period pertinent to Pesticide Applicator Certification. After the training period, Category and Core tests will be administered for those registrants who wish to fulfill requirements for Pesticide Applicator Certification.

In addition to the Educational Sessions, an outstanding Trade Show will feature the most recent developments in equipment and products. The Trade Show will not only provide opportunity to see first hand what is available but also to discuss your needs with the Exhibitors. It is an excellent opportunity for you to bring your Greens Chairman for his enlightenment, as well.

Complete details for Expo '81 are available in the printed Program available upon request from your executive Director, Dr. Henry W. Indyk, Soils & Crops Department, Cook College, P.O. Box 231, New Brunswick, New Jersey 08903, Phone: (201) 932-9453.

TURF TEASER!!! By moving only two (2) of the golf tees, reconstruct the exact structure so that the golf ball is on the "outside" of the cup-like form. And you cannot move the ball!!!



WHITE MARSH, MD.

Sterilized Top Dressing

EGYPT FARMS EXCLUSIVE! All top dressing ingredients are thoroughly mixed and sterilized by indirect heat in our special process. The sand particles are actually coated with a mixture of top soil and peat humus for a completely homogenous mixture that will not separate during handling and spreading.

301-335-3700 Egypt Farms top dressing is formulated especially for the transition zone to specifications recommended by the United States Golf Association, Texas A&M, Penn State, North Carolina, and the University of Maryland.

Many years of research and testing by these leading universities have produced a soil mixture for superior growth; to maintain the best balance of percolation; to resist compaction; for good aeration; and for the retention of usable water and nutrients in the growing medium.

*Green and tee construction materials & mixes conforming to U.S.G.A. specs are also available.

Distributed by: Metro-Milorganite, Inc. (914) 769-7600 The Terre Co. (201) 473-3393 Wagner Seed Co., Inc. (516) 293-6312

WAGNER SEED COMPANY, INC.

81 SECATOGUE AVE., FARMINGDALE, N.Y. 11735

(516) 293-2920



HALCO

DIVISION

(516) 293-6312



M. D. CRAWFORD (201) 625-4383

WHOLESALE SUPPLIERS TO THE PROFESSIONAL
TURF & LANDSCAPE TRADE

Alan G. Cruz,
Inc.

GOLF COURSE MATERIALS

- Top Soil
- White Sand
- Yellow Stone
- Crystal Spar
- Humus

Loader, Bulldozer,

Royer and Truck Rentals

290 SO. ORANGE AVENUE
LIVINGSTON, N. J. 07039

(201) 992-2335



Third place finisher in this year's Invitational, Colonia C.C.



Finishing fourth isn't bad for their first attempt! Rumson C.C.



Sure he works with the Greener Side. Do you think we can get anybody sane to do this kind of work?

The Very First Systemic in FLOWABLE Form CLEARY'S 3336-F Fungicide



The dawn of a better technology.
FLOWABLE.

Cleary's 3336 Systemic Fungicide has earned your confidence in the prevention and control of dollar spot and 6 other major diseases. Today W.A. Cleary announces the development of 3336-F, the first systemic in flowable form. Flowables are simpler and safer for the user to handle. Need little agitation. Will not clog spray nozzles. Offer a uniform particle distribution for excellent availability to the plant. Cleary's new **3336-F FLOWABLE**.

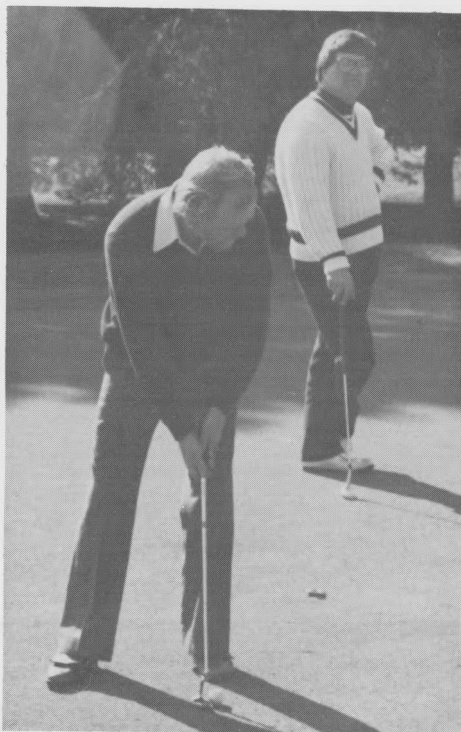
Now available at application cost less than systemic wettable powders.

FOR FURTHER INFORMATION SEE YOUR
LOCAL DISTRIBUTOR OR CONTACT



W.A. CLEARY CHEMICAL
CORPORATION

1049 Somerset St., Somerset, N.J. 08873 (201) 247-8000



Three feet to the left . . . then back six inches to the right . . . then . . .



He always smiles after reading the Annual Treasurer's Report.



Haven't I seen this face in the Post Office recently?

2,4-D Absorption Small

FARM WORKER ABSORPTION OF 2, 4-D IS VERY SMALL, according to studies presented to the American Chemical Society's national meeting. A government study of 2, 4-D exposure to workers involved in aerial and ground application, indicated that the amount of the chemical excreted by each individual is equal to the amount of 2, 4-D absorbed. Another study indicated that the herbicide is not metabolized in the human body. For the average 175-lb. man applying 2, 4-D 30 days a year for 30 years, the total absorbed is less than one gram, far below the single two-gram intravenous dose given to one man without apparent ill effects, says The World of Agricultural Aviation.

N.J. DEPARTMENT OF AGRICULTURE

REPORTS: Leaf feeding damage by the gypsy moth this summer was nearly twice the acres defoliated last year. Defoliation increased from 411,975 acres in 1980, to 798,790 in 1981 to new record levels. The areas defoliated represent about 75 percent of the State's hardwood forest.

In all, 309 of the State's 567 municipalities contained defoliating populations of the pest. All counties were affected.

Of the total acres damaged, 589,955 acres were severely defoliated; 176,910 acres were moderately-heavily defoliated and 31,925 were lightly defoliated.

August is generally a bad month for bees to collect pollen and nectar. However, this year has been exceptionally good, particularly in southern New Jersey.

Results of initial pheromone trap survey for the Mediterranean fruit fly in southern counties of the State were negative.



Echo Lake revisited



"The drinks are on me." Boy did we let a good one get away here!



Balding is beautiful

CUSHMAN TURFCARE

**Equipment to Increase
Productivity and Improve
Your Greens and Tees**

- TRANSPORTATION
- DUMPING
- AERATION
- TOP DRESSING
- SPRAYING
- SPREADING
- SCARIFYING

**Double
Eagle**

(201) 521-2500

GOLF AND

INDUSTRIAL PRODUCTS

Foregate Drive, Jamesburg, N.J., 08831



Scooner said he didn't care how she played.



Just that smile's worth a million bucks.

Check it — Now Check Pesticides for Compatibility

Tank mixes of pesticides become more complex as new pesticides become available and label registrations are increased. This can lead to compatibility problems, particularly when liquid fertilizer is a part of the mix. In order to prevent problems in the tank, start with a glass jar test to check for compatibility of pesticides and fertilizer or water. Pour a pint of the water or fertilizer (depending on the carrier being used) in a quart jar and add each pesticide, one at a time, in the proportion recommended for use. Shake well and note any separation. If the pesticides do not combine well, add a compatibility agent (Unite, Compex, Suspend, are examples).

When mixing pesticides add the wettable powder first, followed by flowables, water solubles, surfactants and emulsifiable concentrates. Always agitate after each addition for thorough mixing.

ARE YOU WASTING PESTICIDES?

University of Nebraska Agricultural Engineers, in a study of on-farm pesticide applicators, have revealed significant and costly application errors. Six out of ten applicators surveyed made errors greater than plus or minus 10 percent. Some applicators were applying much more than they should have been and some were applying much less than they should have been in order to control the pest. Some of the reasons found for such errors were: mismatched nozzles, plugged or badly worn nozzles, screens discarded, pressure gauges broken or inaccurate and tank level markings that were in error. Can you imagine overspending each dollar by 10 cents or being shortchanged 10 cents on each dollar?

DIVINE SOLUTON TO DROUGHT

"If ye walk in my statutes, and keep my commandments, and do them; then I will give you rain in due season, and the land shall yield her increase and the trees of the field shall yield her fruit."

Leviticus 26:3-4

United States Championship golf in New Jersey
is played on FERTL-SOIL BIODRESSING.

Doesn't this tell you something important?

FERTL-SOIL Company

673 NEW BRUNSWICK AVENUE

RAHWAY, NEW JERSEY

Marty Futyma

Chip Smith

Dave Smith

Insecticide Measurements

Q: Recommendations for insecticides are usually given for 100 gallons of solution. We do some of our spraying with a backpack and spend a lot of time trying to determine the right amount of material to use. Is there a chart available or some easier way to reduce the recommendations to a gallon on solution?

A: The measurements given below are approximate and should be used as a guideline only if the directions for mixing small quantities are not given on the label.

LIQUID MEASURE:

Amount per 100 gal.	Amount per gal.
1/4 pint	1/4 teaspoon
1 pint	1 teaspoon
1 quart	2 teaspoons
1 gallon	2 1/2 teaspoons
2 gallons	5 tablespoons
4 gallons	1/3 pint
11 gallons	7/8 pint

DRY WEIGHT:

Amount per 100 gal.	Amount per gal.
1/2 pound	1/12 ounce
1 pound	1/6 ounce
2 pounds	1/3 ounce
3 pounds	1/2 ounce
4 pounds	2/3 ounce
6 pounds	4/5 ounce
16 pounds	2 3/5 ounces
20 pounds	3 1/5 ounces

Courtesy of Roger Funk, Ph.D
Davery Tree Company

One Name Stands Out in Golf Course Accessories . . . **STANDARD!**

Ball washers, tee markers, Duo-Rakes, flags, poles, cups, benches, tee markers, Litter Caddies, signs, hole cutters, bridges, personalized equipment and more.



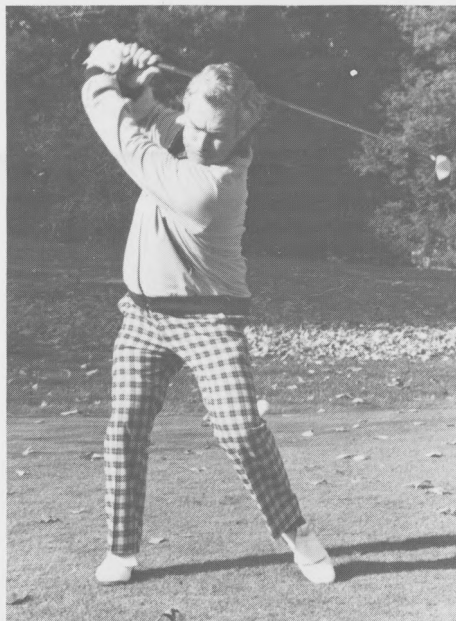
Pro-Line
BY STANDARD

220 East 4th St.
Cedar Falls, Iowa 50613
Phone 319-266-2638

1981 Greener Side District Reporters

District 1 - Dennis DeSanctis
District 2 - Glenn Gallion
District 3 - Ken Kubik
District 4 - John Fenwick
District 5 - Bob Dwyer
District 6 - Charlie Dey
District 7 - Rip Ripple
District 8 - John Boyer

These names are your District Greener Side representatives. If you have something of interest, please contact them. If your District isn't mentioned in this publication, it's either your fault or your representative's.



This gentleman claims to be a 24 handicapper. But most of us know better.

The Greener Side Welcomes Our New Members

Mat Antonaccio, B1, Morris County C.C.;
Reginald Grant, C, East Orange G.C.;
David Heroian, B1, Ridgewood C.C.;
Earl C. Miller, A, Warrenbrook G.C.;
Bill Rapp, C, Steve Willard Co.;
Greg Swerdersky, B1, Hackensack G.C.;
Dick Van Zandt, D, Van Zandt Landscaping

You Know It's Going To Be A Bad Day When:

- . . . You wake up face down on the pavement
- . . . You call Suicide Prevention and they put you on hold
- . . . You put your bra on backwards and it fits better
- . . . You see a 60 Minutes News Team waiting in your office
- . . . Your birthday cake collapses from the weight of the candles
- . . . Your son tells you he wished Anita Bryant would mind her own business
- . . . You want to put on the clothes you wore home from last night's party - and there aren't any
- . . . You turn on the news and they're showing emergency routes out of the city
- . . . Your twin sister forgets your birthday
- . . . You wake up to discover that your waterbed broke and then realize you don't have a waterbed
- . . . Your horn goes off accidentally and remains stuck as you follow a group of Hell's Angels on the Freeway
- . . . Your wife wakes up feeling amorous and you have a headache!

EDITORS NOTE THANKS JACK

For the last two years, Jack Martin has held the position of President of our association. He has done a job that few could have accomplished. He often jeopardized his personal position in our industry by fighting bureaucracy at a level few would have attempted.

Granted, he has made some enemies. But enemies are usually made when feathers are ruffled and complacency is abandoned. Some of our own members may not agree with his approach but give credit where credit is due. We are much better now through Jack's leadership than we have been in many, many years. As I see it, Jack's only fault is his aggressiveness. I hope I have that same fault. Thanks Jack. You were there when we needed you most.

PRO-LAWN PRODUCTS INC.

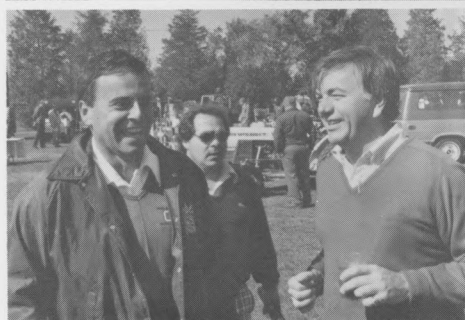
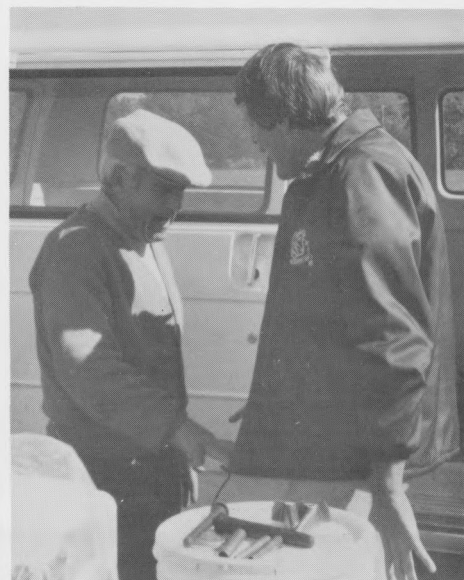
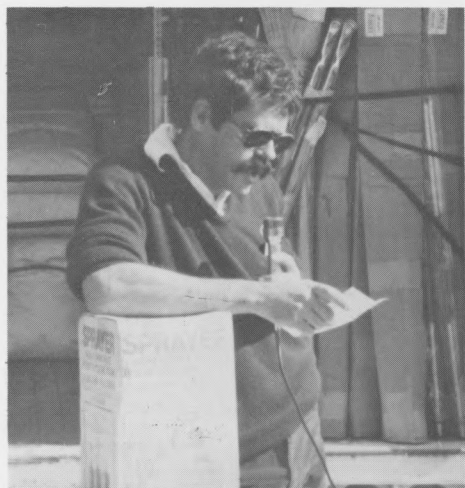
Fertilizer, Chemicals, Seed

Ingrid A. Kern
609-877-4787

Andrew Mulick
201-967-9124



Everyone Enjoys the Field Day



THE GREENER SIDE PATRONS

ALAN G. CRUSE, INC.

Top Soil, Sand, Stone, Spar, & Humus
Al Cruse
(201) 992-2335

ALPINE TREE CARE, INC.

Serving Northern N.J. for 60 years
Bob Mullane - Gary Ritell
(914) 948-0101

AMERICAN TENNIS & TRACK, INC.

Repair and Construction -
Tennis Courts and Running Tracks
Harold G. Skinner
(201) 778-1171

ANDREW WILSON, INC.

Irrigation, Chemicals, Equipment
Drew Morrison
(201) 654-5800 (office)
(201) 273-8555 (home)

ARTESIAN PUMPING SYSTEMS

Pumps for Watering Systems
Peter J. Mauro
(201) 845-7080

AQUA-FLO, INC.

Irrigation Supplies
Philip Demarco
(609) 561-1777

AQUATROLS CORPORATION

OF AMERICA
Water Penetration Products
Demie S. Moore
(609) 665-1130

BLUE RIDGE PEAT FARMS, INC.

Top Dressing, Peat, Humus, & Potting Soil
Gene Evans
(717) 443-9596

BOB BOCCHINO, INC.

Construction Contractor
Bob Bocchino
(201) 725-2820

BRUE DAN CORPORATION

Golf Cars & Industrial Vehicles
Jake Kriney - Kirby Overton
(914) 469-2275

CONSOLIDATED STEEL & ALUMINUM FENCE CO., INC.

Eugene T. McLaughlin
(201) 272-6262

CORDOBA HELICOPTERS, INC.

Agri-Flight Spraying
Joe Cordoba
(609) 448-0031

DOUBLE EAGLE GOLF & INDUSTRIAL PRODUCTS

The Cushman People
(201) 521-2500

EGYPT FARMS, INC.

Golf Green Top-Dressing
John Strickland
(301) 335-3700

FERTL-SOIL

Turfgrass Supplies
Martin Futyma
(201) 388-0100

GRASS ROOTS TURF PRODUCTS, INC.

Turfgrass Supplies
Ken Kubik (201) 361-5943
Bert Jones (201) 686-8709

GEO. SCHOFIELD COMPANY, INC.

Sand, Stone, Mulch Chips, Compost Plus
(201) 356-0858

HALCO DIV. -

WAGNER SEED CO., INC.

Turfgrass Supplies
M.D. "Doc" Crawford
(201) 625-4383

JEP SALES, INC.

Turf Maintenance Equipment
Jack Poksay
(609) 585-2300

KOONZ SPRINKLER SUPPLY COMPANY

Irrigation Equipment
William Koonz
(201) 379-9313

The listed PATRONS are the sole financial supporters of this publication. Without them this newsletter would not exist. Please give strong consideration to supporting them whenever possible.
Editor.

LAKESHORE EQUIPMENT & SUPPLY COMPANY.

Manufacturers, Distributors Turfgrass & Horticultural Supplies
Bill Keohane
(800) 321-5325

LEBANON CHEMICAL CORP.

Country Club Fertilizers & Chemicals
Bill Nist
(201) 329-4011

LEON'S SOD FARMS

Certified Sod Grown on Mineral Soil
Samuel Leon
(201) 996-2255

LONGO INDUSTRIES, INC.

Pumps - Motors - Bearings
Sales - Service - Repairs - Rebuilding
(201) 539-4141 24 hours

METRO MILOGANITE, INC.

Turfgrass Supplies
Tony Grasso and John Wistrand
(914) 769-7600

MONTCO PRODUCTS CORPORATION

Surf Side & Zap
Robert Oechsle
(215) 628-3144

MOUNTAIN TURF PRODUCTS

Turfgrass Supplies
Richard Grant
(717) 646-7220

O.M. SCOTT PROTURF

Fertilizer, Chemicals
Fran Berdine (914) 361-4105
Bob Dwyer (201) 238-5941

PARTAC PEAT CORPORATION

Golf Course Top-Dressing
James Kelsey
(201) 637-4631

PRO-LAWN PRODUCTS, INC.

Fertilizer, Chemicals & Seed
Ingrid A. Kern (609) 877-4787
Andrew Mulick (201) 967-9124

ROCKLAND CHEMICAL CO., INC.

Turfgrass Chemicals & Fertilizer
Cliff L. Belden, III
(201) 575-1322

REES JONES, INC.

Golf Course Design
Rees Jones
(201) 744-4031

STANDARD GOLF COMP.

Pro Line Golf Course Equipment
Steve Burrell - Chief Waseskuk
(319) 266-2638

STORR TRACTOR COMPANY

Turf Maintenance Equipment, Irrigation
Paul Deschamps - Gene Tarulli
(201) 232-7800

THE TERRE COMPANY

Turfgrass Supplies
Dennis DeSanctis - Greg Hutch
(201) 473-3393

TURF PRODUCTS CORPORATION

Turfgrass Supplies
Ernie Rizzio - Rick Berberick
(201) 983-9333

UPJOHN - TUCO COMPANY

Turfgrass Chemicals
David Sylvester
(203) 828-3790

THE VAUGHAN-JACKLIN CORPORATION

Turfgrass Supplies
Sky Bergen
(201) 377-2054

W.A. CLEARY CHEMICAL CORPORATION

Turfgrass Chemicals
Clay Nelson - Shaun Barry
(201) 247-8000

WILFRED MacDONALD, INC.

Turf Maintenance Equipment
James H. Pelrine
(201) 471-0244