

THE GREENERSIDE

January - February 1992 • Volume 15 Number 1

Candidates conclude campaign '92

For months, the candidates for directors and vice presidents of the 1992 Golf Course Superintendents Association of America Board have been hard at work detailing their thoughts and ideas on how to make the GCSAA a better organization. These diligent superintendents have taken time to make a special reply to "The Greenside" on issues of importance to all members. Win or lose, these men are leaders of their profession and their thoughts will help shape the future of the GCSAA and, ultimately, the Golf Course Superintendents Association of New Jersey as well. So read on. If you're a member of national (GCSAA), you can vote through the GCSANJ delegate, Steve Malikowski. Contact him with your opinion after reading these candidates' responses to our questions at (609) 884-9333 at the Cape May National Golf Course.

Nominees for GCSAA vice president respond to "Greenside" question

Q. Integrated Pest Management is now a staple at many of our golf courses. What advances would you hope we can make in this area in the future?

Joseph G. Baidy, CGCS

As a Director of GCSAA, I have been committed, always, to the protection and improvement of the environ-

ment. Integrated Pest Management is one of the many ways to accomplish this protection and improvement.

By definition, IPM is the combined efforts of cultural practices, natural controls and the judicious use of pesticides to supplement the first two parts. To advance the art and science of IPM, funding of continued research and the advanced education of turf managers (golf course superintendents and others) must take place. GCSAA is, and must be, the lead organization in funding such research and superintendent education. However, the strongest and most effective leadership in a local, state or regional area must come from individual and group

(Please turn to page 5)

In this issue



Editorial	2
President's Message	3
GCSANJ News	6
Candidates give us their opinions	11
New Patrons for 1992	14
Welcome back, Willet Wilt	15
Platinum tee club has banner year	15
X marks the spot	16
The Back Nine	17
Paul Sartoretto wins award	17
Lower extremity flexibility	18



63RD INTERNATIONAL
GOLF COURSE CONFERENCE & SHOW
FEBRUARY 10 - 17, 1992 NEW ORLEANS CONVENTION CENTER

THE GREENERSIDE

GCSANJ Newsletter is published six times a year by the Golf Course Superintendents Association of NJ, 66 Morris Ave., P.O. Box 359, Springfield, NJ 07081

*Ilona Gray, Editor
Glenn Miller, Ken Krausz,
Newsletter Business Staff
John Fenwick,
Edward Walsh, Shaun Barry,
Paul Powondra
Contributing Writers*

*Please address inquiries to:
The Greenside, Editor,
P.O. Box 3672, Wayne, NJ
07474-3672.*

*For Ad Placement: Ilona Gray,
(201) 595-7172*

*Art and Typography by
Association Management
Corporation, Springfield, NJ*

© 1992 THE GREENERSIDE

GOLF COURSE SUPERINTENDENTS ASSOCIATION OF NEW JERSEY

66 Morris Ave., Springfield,
New Jersey 07081

Officers

*David Pease, President
Chris Carson, Vice President
Thomas I. Grimac, CGCS, Secretary
Martin G. Mantell, CGCS, Treasurer
Stephen P. Finamore, CGCS,
Past President*

Directors

District 1 Ken Krausz, CGCS David Mayer	District 3 Paul Powondra Glenn A. Miller
District 2 Ron Mencl Chris M. Gaynor, CGCS	District 4 Ken Thompson John Carpinelli

Executive Secretary

Judy Policastro

Commercial Representatives

Steve Chirip Shaun Barry

Opinions expressed in this Newsletter are the opinions of the authors and do not express the opinions or policies of the GCSANJ Board and its membership.

EDITORIAL



Bilanx

It's not a typo. "Bilanx" is the Latin root word for balance and a way of getting your attention. In golf course management, as well as in editing "The Greenside", "bilanx", and how you achieve it are important. In turf management, you have to bilanx the agrostological inputs with the capabilities of the turf varieties you are growing, the required mowing schedules, and the availability and timing of water, the present and potentially present pests and so on. Oh, yes, did I mention that this bilanx has to be achieved under a specific budget and under the stress of daily wear and tear on the turf? It's really not so different in managing anything else. Achieving a bilanx is both the challenge and the fun of being a good manager.

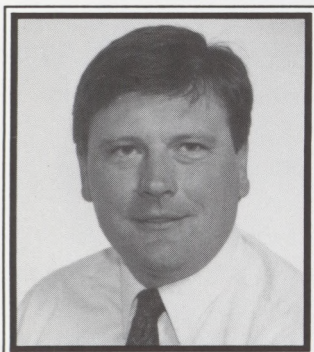
With "The Greenside", we try to maintain a bilanx with humor, technical articles, advertising, association and member news, and articles in support of the GCSAA. This issue has had for the past several years a focus on the new GCSAA slate. It's serious business, and I urge you to read the responses of the candidates to "The Greenside" questions. **Steve Malikowski** did his usual excellent job in developing this article. Balancing this is a new feature from **Keith Kubik**, the Son of "Willet Wilt". The new feature is a cartoon, and, although designed to be humorous, it provides insight into the challenges faced by superintendents. It's yours to enjoy.

Also yours to enjoy and weave into your bilanx is all the potential new information at the GCSAA convention in New Orleans. A bit more local, Tarrytown, New York, will be the site for a GCSAA seminar on maintaining effective management/employee relationships. Another opportunity to improve your balancing skills. Check out the calendar section of this issue for details.

After this holiday season, I've got some personal balancing to do as well. Let me refer you to my exercise versus caloric intake manual (extension handbook #47B?). It says one holiday cookie and a too small glass of eggnog is equivalent in calories to a five-mile hike with a 20 pound pack! Something will not be in bilanx for a long time.

ILONA F. GRAY

PRESIDENT'S MESSAGE



Negative Connotation

David Pease
President, GCSANJ

What comes to mind first when you hear the words "Public Golf"? In years past, those words were considered

something less than desirable. Conversations would take place "Not bad for a public golf course", or "Oh, we're going down there, isn't that a public course?", denoting the foul stench of below par conditioning.

There had been a definitive line drawn in the sand of the golfing world between public golf course conditioning, and private golf course conditioning. This attitude was coddled not only by the general population of golfers, but also by our own peers within our industry. These negative attitudes were felt through the likes of job advertisements, showing that the source was looking for a prospective applicant from a reputable private golf club.

Many times I would encounter conversations during national gatherings of superintendents, receiving their words with an apologetic "I work at a public golf course." The attitude division between our own family of superintendents was quite clear. It was never more clear than when the Monmouth County Park system took over ownership of the elite Private Golf Club, Hominy Hill. Some of our own peers thought it was a sad day to see this golf course go into the public domain of superintendentship.

It appeared that in years past public golf would compromise conditioning, and the caliber of strategic design for the daily fee golfer, indicating there was a class difference between the two. That somehow the daily fee golfer could not, and should not be privy to some of the better conditioning and designs of private institutions. "You can not make the course challenging for it may hold up play." Total "poppy cock". Golfers of both public and private enjoy the game to the same degree. So, why should the daily fee person enjoy the game any less?

The line between the two institutions has been eroding over the years. The popularity of the game, with its evolutionary changes has opened the doors to better golf for the public golfer. Limited budget has been the biggest hurdle for the public golf superintendent.

(Please turn to page 4)

Calendar

- February 4** **Basics of Turfgrass Management** - Mays Landing, NJ. Contact: Office of Continuing Professional Education, Cook College, (908) 932-9271.
- February 5-6** **Garden State Nursery & Landscape Conference & Trade Show** - Garden State Convention & Exhibit Center/Somerset Hilton, Somerset, NJ. Contact: NJ Nursery & Landscape Association, Inc., (609) 737-0890.
- February 19-20** **Improving Turfgrass Survival: Site Analysis and Modification** - New Brunswick, NJ. Contact: Office of Continuing Professional Education, Cook College, (908) 932-9271.
- February 22-** **New Jersey Flower and Garden Show** - Somerset Hilton and the Garden State Convention & Exhibit Center, Somerset, NJ. Contact: Todd Jameson, (201) 560-9020.
- March 1**
- February 26-27** **Advanced Turfgrass Management Symposium** - New Brunswick, NJ. Contact: Office of Continuing Professional Education, Cook College, (908) 932-9271.
- February 26** **New Jersey Landscape '92** - Meadowlands Convention Center, Secaucus, NJ. Contact: Bergen County Landscape Contractors Association, (201) 664-6310.
- March 9-11** **Developing and Maintaining Effective Manage/Employee Relationships** - Westchester Marriott, Tarrytown, NY. Contact: GCSAA at 1-(800) 472-7878 or (913) 832-4444.
- March 10** **Technical Training for Your Spray Technician** - Winged Foot C.C., Mamaroneck, NY. Contact: GCSAA at 1-(800) 472-7878 or (913) 832-4444.

PRESIDENT'S MESSAGE



(Continued from page 3)

To create the conditions we all enjoy as golfers for the public institution requires additional resources when dealing with commodities, such as agricultural supplies. In addition, stepped up cultural programs, and manpower requirements are necessary to deal with the number one variable, WEAR. Machinery equipped with banks of flood lights for the midnight madness of pre-dawn grooming activities adds to the burden of performing up to the standards we all enjoy.

The public golf course superintendent has to over-

come many hurdles to produce a product indicative to high caliber playability.

Our national association has acknowledged, the public golf superintendent with a forum within its national convention. In addition, on a local level, the MGA, for the second year running, has held an annual Public Golf Forum.

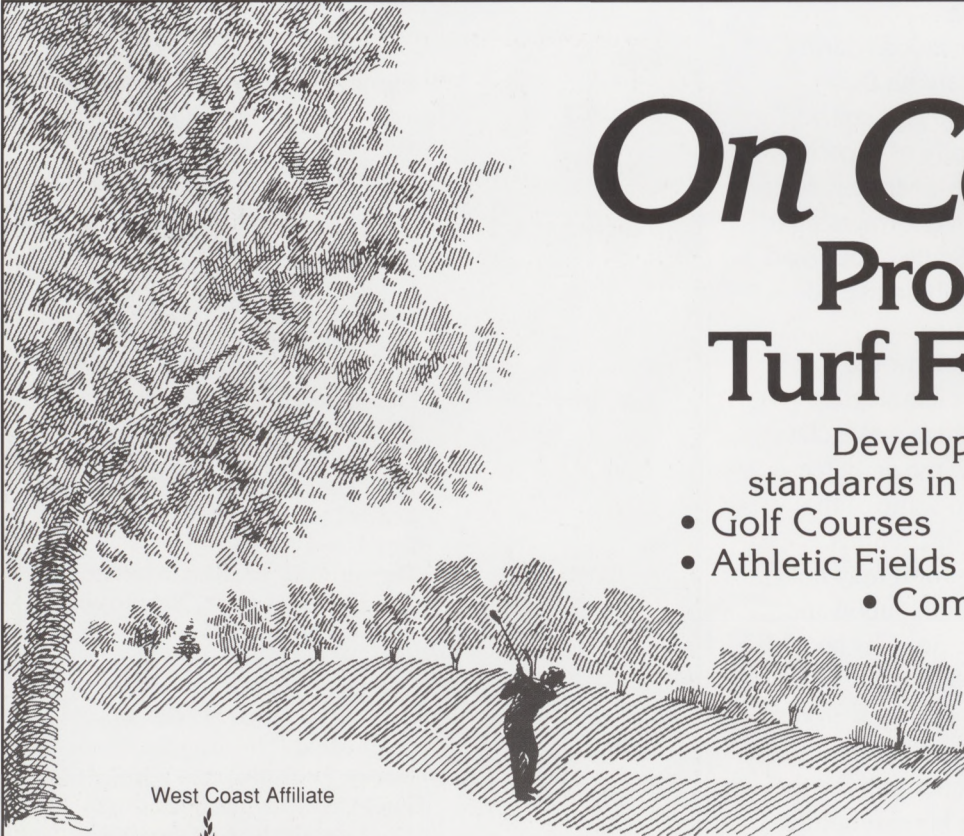
It is a breath of fresh air to see those old attitudes fall by the wayside, opening up an era of prosperity and respect for the public golf course superintendent.

Steven Cadenelli garners award

The New Jersey Turfgrass Association announces that Steven Cadenelli of Manasquan, along with the Metedeconk National Golf Club in Jackson, have been chosen as the recipients of the 1991 New Jersey Turfgrass Recognition Award. The award was presented at the New Jersey Turfgrass Expo '91.

Metedeconk is a shining example of how a golf

course can be in tune with nature. The way that the course is built and maintained by Steve in the environmentally sensitive wetlands and forests that are on the edge of New Jersey Pine Barrens, is living proof that quality turf can be maintained in ecological harmony with nature. Furthermore, Steve has done all of this while serving as President of the Golf Course Superintendents of America this year.




On Course™ Professional Turf Fertilizers

Developed to meet the highest standards in turfgrass management

- Golf Courses
- Athletic Fields
- Corporate Parks
- Cemeteries
- Commercial Turf

West Coast Affiliate
SEED RESEARCH
OF OREGON, INC.

P.O. BOX 373
DAYTON, NJ 08810
800-522-4769



Committed to providing reliable, dependable service
and the best in quality lawn and garden products.

Candidates conclude campaign '92



(Continued from page 1)

efforts within that local, state or regional area.

As an officer of GCSAA, I shall continue my strong commitment and effort not only to advance the art and science of IPM on a national and international level, but on the local level as well. The latter can be accomplished by furnishing resources and knowledge to the local, state and regional groups to assist them in their efforts of education and research on the appropriate levels.

Randy S. Nichols, CGCS

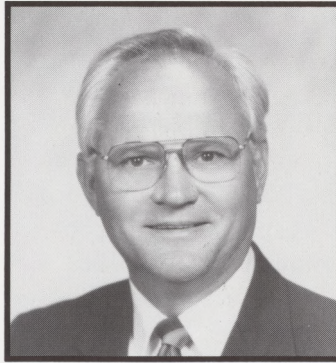
As your question states, we as golf course superintendents have been practicing Integrated Pest Management for years. I assume when you are referring to integrated pest management you are referring to the reduction of the use of pesticides. In this vein, there are several directions in which we need to research. One is the identification and, more importantly, the level of disease-causing organisms at which treatment should be applied. I feel that research should be similar to those used for nutrient level values in plants (i.e., with computers). If positive identification could be made and a threshold level could be established at which we should apply pesticides, then we could reduce pesticide use and apply only pesticides that were specific to these diseases.

Secondly, we should continue to develop plant varieties that are resistant to disease and insect damage.

I also feel we should continue to develop biological controls that cause a reduction of disease-causing organisms. These include nematodes and introduced diseases that attack these organisms.

We should also research other cultural practices that can reduce the dependency on pesticides.

Because of public opinion, we must act quickly to develop alternative methods of pest control. However, I don't see a near future without the use of limited pesticide use.



*Joseph G. Baidy, CGCS,
Candidate for Vice President*



*Randy Nichols, CGCS,
Candidate for Vice President*



RALPH MCGILLAN
Excavating Contractor

Specializing in Lakes & Ponds

Over 25 years experience in building new ponds,
enlarging & redesigning existing ponds.
Can get all DEP permits

(609) 655-2281
17 Stockton Drive, Cranbury, NJ

AQUA-FLO[®]

Inc.



Buckner[®]
DISTRIBUTORS

- Golf Courses
- Estates
- Athletic Fields
- Commercial

- Floating Aerators
- Custom Built Pumping Systems

25 years of quality service

AQUA-FLO, INC.

320 Basin Road • Hammonton, NJ 08037 (609) 561-1777
1-800-524-0895 (outside NJ)
4155A Westfax Drive • Chantilly, VA 22021 (703) 968-7081



GCSANJ NEWS

THANK YOU, STEVEN CADENELLI

Favorite son from the state of New Jersey, president of GCSAA for 1991, thank you. Thanks for serving so well and giving such a good account of your activities during your tenure as President. You are a credit to the state and to your profession. The year 1991 was no picnic. We took some cheap shots about toxic fairways and other snipers targeting turf to New Jersey. We hope to be seeing more of you in the year to come. Maybe you can put your feet up for a while. You stood up to them and made them back down. Welcome back!

DISTRICT III MEETING

On Sept. 5, 1991, Dennis Shea and Cherry Valley Country Club hosted a District 3 meeting. Unfortunately, this date was after the deadline for "The Greenside", so

this article has to appear now in 1992. I do hope Dennis is not concerned that we forgot his meeting because that would be impossible. Both he and the club treated us like we had the money to join this extraordinary club.

We met in their sales office. Coffee, juice and pastries were served and I did not see one Dunkin Donut box. After everyone finished with their breakfast, Dennis proudly introduced the people involved in the project. We were shown a beautiful scale model depicting what the property will look like when it is finished. This was followed by a walking tour of the nine holes still under construction. Some of the holes were near completion while others were just starting to take shape. With each hole, Dennis was able to see what none of us could see. He described the holes in such detail, it was apparent that this course was completed in his mind. There were 31 members present and I am sure all will be glad to view the completed version.

A superb buffet lunch was served compliments of

**Products
you need.**

**People you can
count on.**

Whatever your turf-management needs—from fertilizers to fungicides—Pro-Lawn has a comprehensive selection ready for quick delivery.

But our representatives think it's important to provide more than just the latest products. That's why each rep is a turf-management professional who can diagnose problems, help you determine your fertilizer, chemical and seed needs, and keep you informed of the latest research.

So don't just call a salesman. Call a turf-management expert—your local Pro-Lawn representative.

Call the Pro-Lawn rep nearest you today.

Lake Hopatcong, NJ 07849 Craig Lambert 201-863-3368	Langhorne, PA 19047 Ingrid Kern 215-750-1732	Wrightstown, NJ 08562 Brad Simpkins 609-758-7620
---	--	--

The future of turf management



RES. 201-992-2335

BUS. 201-227-7183

Alan G. Cruse, Inc.

GOLF COURSE & LANDSCAPE MATERIALS
DECORATIVE STONE • WHITE SAND • TOPSOIL
HUMUS-TEE & GREEN MIX • BARK MULCH
EARTHLIFE

Established 1953

460 HORSENECK RD.
FAIRFIELD, NJ 07004

★ **BENT GRASS** ★
FESCUE & BLUEGRASS

JADE RUN
TURF & SOD FARM

P.O. Box 425, Buddtown Road
Vincentown, NJ 08088

(609) 859-2400
1-800-332-1220





GCSANJ NEWS



Cherry Valley CC. Golf was available on the front nine and because we were the first golfers on the course, one of us set the course record. It was a truly satisfying experience that I hope can be duplicated on a state level.

SHAUN BARRY

HOLLYWOOD GETS OUR VOTE

Our annual meeting was once again hosted by Bob Tosh and Hollywood Golf Club. They're very gracious to continue opening their doors for our association. We hope they will allow us to continue to return to this beautiful location.

As was expected, the existing slate of officers was asked to continue in their current positions. Dave Pease (President), Chris Carson (Vice-President), Tom Grimac (Secretary), and Marty Mantell (Treasurer) will be our 1992 officers. There will be some new names on the

district level:

District 1 - Dave Mayer - Ken Krausz

District 2 - Chris M. Gaynor - Ron Mencl

District 3 - Paul Powondra - Glenn A. Miller

District 4 - John Carpinelli - Ken Thompson

After the election, each chairman of a committee summarized his 1991 efforts and the treasurer gave us a report on our finances. Questions were answered and everyone seemed pleased and enthusiastic. This was followed by the awarding of recognition and plaques to our 25-year members. Once again Sky Bergen did a great job as we honored three members. Receiving their awards were Skip Cameron, Harry Harsin and Charlie Lane.

With the business part of the meeting over, all 60 members enjoyed a wonderful lunch. Thirty-seven golfers took advantage of Hollywood's hospitality and they played a skins game. Rich Brandel, Steve Chirip, Harry Harsin and Steve Malikowski had one skin each and Chris

THE BEST NAMES IN TURF CARE

JACOBSEN
Commercial Products

WHITE line markers



FMC

TURF RUNNER

JEP

Sales Inc.
211 Yardville-Hamilton Square Rd.
P. O. Box 11126
Yardville, New Jersey 08620
609-585-2300
FAX 609-585-8977

Aer Way

YAZOO



HIJET




OUTDOOR POWER EQUIPMENT

SMITHCO

Specialists in Turf Maintenance Equipment

PARTAC®
GOLF COURSE
TOP-DRESSING



NEW SUPER-GREEN™
Terra-Gram™

TYPAR®
GEOTEXTILES & TURF COVERS

AMERICA'S PREMIUM TOP-DRESSING
HEAT TREATED

AVAILABLE IN BULK OR BAGS

ALSO HIGH-SAND MIXES, CONSTRUCTION MIXES,
CART PATH MIXES AND DIVOT REPAIR MIXES

DISTRIBUTED IN N.J. BY:

FARM & GOLF COURSE SUPPLY
HOWARD SCOTT, 215-483-5000

FISHER & SON CO.
FRANK FISHER, 215-644-3300

GRASS ROOTS TURF PRODUCTS
KEN KUBIK, 201-361-5943

TURF PRODUCTS CORP.
ERNE RIZZIO, 201-263-1234

PARTAC PEAT CORPORATION
KELSEY PARK, GREAT MEADOWS, NEW JERSEY 07838

908-637-4191



GCSANJ NEWS



Gaynor had two. It was a fitting conclusion to a great day.

This was the final meeting of the 1991 year and I would like to thank every club and superintendent who helped make this such a successful year.

SHAUN BARRY

A PRESIDENTIAL AFFAIR

If there is anyone who has not heard, we have found the secret of a successful party. Get Harry Harsin involved and invite every member of the GCSANJ to attend. That is what we did and a great party emerged at our first President's Ball. It was such a wonderful event that we have been asked to make it an annual affair.

Harry and Rita Harsin were our hosts and through their efforts, we were able to provide a wonderful evening. There was a large group of past presidents whose presence

made the evening. It was great seeing them all together again. Their names and years are as follows:

Al Caravella	1970
Jack Martin	1971-1972 and 1980-1981
Skip Cameron	1973-1974
Al Rathjens, Jr.	1975
Joseph R. Flaherty	1978-1979
Ed Walsh	1987-1988
Steve Finamore	1989-1990
Dave Pease	1991-1992

We were very pleased to see that the president of the GCSAA, Steve Cadenelli, arranged his schedule to attend the Ball. His attendance, along with Sherwood Moore, gave us two presidents of the national association at the affair. If you missed the Ball, please do yourself a favor and attend next year. It really is a special evening. You get to meet the people who helped make the GCSANJ the great organization that it is today. Remember that while we can't see the future, we sure can see where we came from.

So make sure to reserve Nov. 6, 1992 in your date book for the President's Ball and plan to enjoy the social event of the year!!!

SHAUN BARRY

CLUB RELATIONS COMMITTEE: AT YOUR SERVICE

Our Club Relations Committee was formed in 1987 for the sole purpose of helping our members improve their professional relationship with their employer or future employer. This is accomplished through three main efforts:

COUNTRY CLUB greenskeeper

Turf Products

Better Quality Turf Care From The Ground Up.



Lebanon
TURF PRODUCTS

P.O. BOX 189 • DAYTON, NJ 08810
P.O. BOX 180 • LEBANON, PA 17042

HOMOGENOUS BLENDED & SCU FERTILIZERS
STRAIGHT & COMBINATION CHEMICAL PRODUCTS

the CLEAN-UP MACHINE



- QUALITY
- RELIABILITY
- SERVICE




THE BROUWER-VAC . . . largest capacity Vac on today's market. The powerful suction head and blower provide the latest technique for vacuuming turf and hard surface areas. It provides an economical method of picking up grass clippings, leaves, twigs, pine needles and thatch from verti-cutting on sod farms, golf courses, parks and recreation areas and also trash and litter from hard surfaces in airports, parking lots, stadiums and highway shoulders.

FEATURES:

- Large load capacity
- Light weight construction
- Dual flotation tires
- Easy to operate finger tip controls
- Unloads in seconds with hydraulic driven conveyor
- 80 in. floating suction head (Opt. extension to 120 in.)
- P.T.O. Driven
- Only requires standard tractor 35-45 hp

Double Eagle

EQUIPMENT COMPANY, INC.
285 Dayton Road
Dayton, New Jersey 08810 • (201) 329-9292



GCSANJ NEWS



1. A comprehensive survey that compiles information on salaries, benefits, budgets and operating procedures.
2. Meeting with golf courses that are seeking to fill the position of golf course superintendent and need information or guidance and most importantly,
3. Meeting with golf course superintendents and/or their golf course official(s) who are having problems and are looking for ways to solve them.

If as a superintendent you are looking for advice, we are here to help you. We will meet with the superintendent, the superintendent and golf course official(s), or if requested, and if the superintendent agrees, we will meet with just the club official(s). The committee will answer questions and provide information, but will not make judgements. This committee is here to serve you and, if you think we can help, please call myself or any one of the committee members.

**STEVE FINAMORE, CGCS
CLUB RELATIONS CHAIRMAN**

case
Turf Tractors

TORO

TORO
Turf and Irrigation Equipment

Hahn
Precision Spray Equipment

STORR TRACTOR CO.

3191 U.S. Highway 22
Somerville, N.J. 08876
201-722-9830

1385 Lakeland Ave.
Bohemia, L.I., N.Y. 11716
516-589-5222

Committee
Ed Walsh
Tom Grimac
Larry Dodge
Pete Pedrozzi

25-YEAR MEMBERSHIP AWARD COMMITTEE REPORT, 1991

Three 25-year members were honored with silver plates at the annual meeting at Hollywood Golf Club on November 7. Presentations were made by **Sky Bergen**.

Charlie Lane has been superintendent at Beaver Brook CC in Clinton for 26 years, under five ownerships. Previously, he was assistant at Asbury Park, now Shark River; Colonial Terrace and Twin Brook Golf Center. He is a Rutgers graduate, as are his two sons, who are his assistants at Beaver Brook.

Harry Harsin is superintendent at Greenbriar/Woodlands, where he built the golf course. Over the years, Harry has worked in various capacities at Colonial, Terrace, Spring Meadow, Twin Brook Golf Center, Manasquan River, Leisure Tech, Shadow Lake Village and Greenbriar.

A Marine Corps veteran, Harry is a Rutgers grad, a former director of GCSAA and three-time golf champion of this association. He also has his own landscaping business.

Skip Cameron started in the golf maintenance field at age 12 at Crestmont CC. A U. Mass. grad at Stockbridge, he served in the United States Air Force and was assistant at Baltusrol. He has been superintendent at Elmwood CC in Westchester, construction superintendent at Holiday Lakes, superintendent at Mountain Ridge and

Poa Free

Pennsylvania Grown PENNCROSS

BENTGRASS SOD

CALL 800-USA-TURF or 717-898-5000



GCSANJ NEWS



has been in charge at Canoe Brook for 18 years. Skip has hosted many important tournaments at Canoe Brook. He has been a director and vice president of this association and served as president in 1973-74. His son, Gary, is superintendent at Gambler Ridge.

SKY BERGEN

MEMBERSHIP COMMITTEE IN ACTION

New Members:

Brad Salmons	B-1	Buena Vista C.C.	Dist 4
Chris Zelly	C	Lebanon Turf Prod.	Dist 3
Jay Antonelli	C	Bruedan Corp.	Dist 1
Lawrence Cunningham	B-1	Hollywood GC	Dist 3
John Parks	B-1	Brigantine Golf Links	Dist 4
Robert Carson	C	Geo. Schofield Co.	Dist 2
Frank Habeck	C	Golf Tech	Dist 4

James Acheson B-1 Tavistock Dist 4

Classification Changes

H. Leroy Tindall McGuire AFB (retired) A to Life
Charles Burdick D Resigned

Members requiring changes in membership status should submit requests in writing to GCSANJ Headquarters.

DISTINGUISHED SERVICE AWARDED TO DR. ENGEL

It was recently my pleasure to present the GCSANJ Distinguished Service Award to Dr. Ralph Engel at Turf Expo. He was surprised and quite pleased to receive both the award and the spontaneous standing ovation given him by the audience. My thanks to all association members who proposed so many excellent names for consideration to the DSA committee. We have many dedicated members who deserve this award, and this made the committee's deliberations all the more difficult.

My remarks on behalf of GCSANJ are given below.

**CHRIS CARSON
VICE-PRESIDENT**

The best part of my participation with the Golf Course Superintendents Association of New Jersey has been the opportunity to work with a lot of people who share our common goals. One of the great privileges allowed the vice-president of our group is to present our most important honor: The Distinguished Service Award.

This award is given to a person or persons who has

(Please turn to page 11)



WHITE MARSH, MD.

1-800-899-SOIL (7645)
FAX (301) 335-0164

Sterilized Top Dressing

Our top dressing is formulated especially for your area to specifications recommended by leading universities and testing laboratories.

EXCLUSIVE! All materials are thoroughly mixed and sterilized by indirect heat in our special process. The sand particles are actually coated with a mixture of top soil and peat humus for a completely homogenous mixture that will not separate during handling and spreading.

Computerized blending of soil mixtures for a superior growing medium.

Green and tee construction materials and mixes conforming to specifications are available.

Custom on-site soil blending and testing with a **portable computerized blender** to meet your specifications are available.



STULL EQUIPMENT COMPANY

TURF and INDUSTRIAL DIVISION

201 WINDSOR RD. • POTTSTOWN, PA 19464

AUTHORIZED DEALER FOR:

BUNTON REEL MOWERS • CUSHMAN TURF
CUSHMAN FRONT LINE MOWERS
CUSHMAN INDUSTRIAL & COMMERCIAL VEHICLES
RYAN TURF MAINTENANCE EQUIPMENT
RANSOMES TURF EQUIPMENT
HOWARD PRICE TURF EQUIPMENT
S.D.I. SPRAYING EQUIPMENT
VICON SPREADERS • BECK TRAILERS
MITSUBISHI MIGHTY MITS TRUCKS

800-724-1024

Five director candidates give us their opinions



With today's sensationalism in the media concerning pesticides and the environment, what do you feel GCSAA can or should do to combat this problem?

Bruce R. Williams, CGCS

While it is very difficult to eliminate the sensationalism we are experiencing concerning pesticides, there are a number of areas that GCSAA is addressing to help our industry. With a concentrated effort, it is our hope that we can minimize the public misperception concerning the effects of pesticide use on our golf courses. In order to do this, GCSAA has developed educational materials and information for the media and the public. Additionally, the association has made a number of public presentations supporting the safe use of pesticides and the positive impact of golf courses on our environment. GCSAA also acts as a clearinghouse to follow the numerous local developments concerning regulatory legislation in our industry.

Recently, the N.Y. Attorney General published a report entitled "Toxic Fairways". Our President Steve Cadenelli responded quickly to the allegations in the report and defended the position of responsible pesticide use on golf courses. GCSAA has responded quickly to other reports as well and should continue to do so in this vein.

GCSAA will continue to protect responsible pesticide

use in the future. We are viewed as environmental leaders in the golf industry. We will do everything we can to educate the media and the public so that we will not be misrepresented. Our membership will be kept informed of all of the current issues concerning golf and the environment. GCSAA will continue to develop the latest educational offerings to keep our membership current with the issues of the day.

Paul S. McGinnis, CGCS

Environmental concerns will be the issue of the future facing the GCSAA and all golf course superintendents. On a national level, the GCSAA must be in the forefront prepared to fight the cause for the golf course superintendent and be very visible and vocal when necessary to plead the case of the golf course superintendent. This would be much more than a public relations function but more of being there to educate the public and other industries that we as golf course superintendents are concerned about chemical use and the environment. The GCSAA must also help the local chapters educate their members through the use of videotapes and speakers at very minimal or no cost to the chapters. All golf course superintendents must be encouraged to be environmental leaders in their communities throughout the country. At the national level, the GCSAA can be a voice and show our concern and our professionalism, but this must be followed through at the

(Please turn to page 12)

GCSANJ NEWS

(Continued from page 10)

had a lifetime commitment to our association or our profession. Tonight, we honor a man who has been truly committed to the turf profession. He's a man who has made great contributions to the improvement of turf and golf courses, who has helped to educate and develop so many of the golf course superintendents in New Jersey, and who has worked tirelessly throughout his lifetime for better turf.

He is one of our pioneers, and though many of us aren't old enough to know first hand the specifics of his early work, we all recognize his legacy—which is the professional, educated golf course superintendent of today.

It is, therefore, my pleasure to honor Dr. Ralph Engel as the recipient of the 1991 Golf Course Superintendents Association of New Jersey's Distinguished Service Award.

Available in
New Jersey through
Ferti-Soil
Turf Supply, Inc.



Marty Futyma
(201) 322-6132

NATURAL ORGANIC
FERTILIZER

Milorganite®

4% Iron
Activated Sewage Sludge

METRO MILORGANITE
365 Adams St.
Bedford Hills, NY 10507

Processed Only By
Milwaukee Metropolitan Sewerage District
Milwaukee, Wisconsin

Director candidates speak up

(Continued from page 11)

local level with the help and support of the GCSAA.

Joseph M. Hahn, CGCS

A) GCSAA should take a firm stand that we, as golf course superintendents, must use pesticides at the present time.

B) GCSAA should emphasize that golf course superintendents, through education, are the best qualified to choose the proper pesticide for the problem, and apply it in the correct manner.

C) We must continue to support a scouting concept in order to guarantee proper identification of the pest and eliminate unneeded applications.

D) We must support, economically, all efforts to find alternative methods of pest control.

E) GCSAA should emphasize that we, too, are living in and raising families in this environment, so it is in our best interests to protect it.

F) GCSAA should continue to demonstrate to local, regional and national environmental agencies our commitment to the judicious use of pesticides.

Randy Zidik, CGCS

Recent publications such as the New York State Attorney General's report, entitled "Toxic Fairways", and an article in "USA Today" implying that pesticides used on golf courses might be contributing to occurrence of breast cancer in LPGA tour players are examples of sensationalism. GCSAA's policy has been to respond quickly and directly with letters, phone calls and news releases containing information supported by scientific data.

While there is the need to deal reactively with some

situations, GCSAA's main thrust will continue to be proactive. GCSAA's Environmental Management Program, cooperative public service announcement with the EPA regarding the safe use of lawn care chemicals, recently developed Position Papers and Greentips factsheets, UST insurance program for golf courses, testimony given at federal subcommittee hearings, Government Relations Liaison network, sponsorship of an Environmental Forum in Washington, D.C. this past June and our contributions to the USGA/GCSAA Turfgrass Research Committee are all examples of the importance GCSAA places on environmental issues and the willingness to commit resources toward the development of environmentally sound management practices.

We simply need to continue doing what is right and be aggressive in telling the world about the good things we do.

C. Wayne Perkins, CGCS

First, we must combat the misinformation given the general public by the media concerning pesticides and application safety. This can be accomplished by the individual member, the Board of Directors and the GCSAA by increasing our campaign to improve our public image.

Second, we must continue our own education through seminars and regional conferences. Education enables us to choose the correct chemicals for the desired results. This, coupled with reduced pesticide usage, will help us in decreasing environmental impact.

In conclusion, our association has been blessed with a far-sighted Board of Directors leading us in these endeavors. I will continue to follow their direction of keeping the environment clean and safe for our children's children to enjoy.

(Please turn to page 13)

TARGET ENVIRONMENTAL



- Environmental Audits
- Site and Remedial Investigations
- Underground Storage Tank Closures
- Environmental Drilling and Consulting Services
- OSHA Trained and Certified
- Single Source Contractor/Consultant

SERVING ENTIRE
MID-ATLANTIC
REGION

TARGET ENVIRONMENTAL CO., INC.

P.O. BOX 703/NEWFIELD, NJ 08344
NJ 609-692-7575 PA 215-735-7004 FAX 609-692-8685

MUNTHER'S SPRAYING SERVICE, INC.

*Complete Golf Course Spraying since 1947
Fairway Programs
References Available
Owner - Operator*

Larry Munther
(201) 540-9764

9 Shadyside St.
Morristown, NJ 07960

Director candidates give opinions



(Continued from page 12)

Q Assuming you now have your club's support in running for a Director's position on the GCSAA Board, how would you respond to the question of the time needed for GCSAA business, in relation to your position as superintendent at your club?

Bruce R. Williams, CGCS

I am pleased to say that I do have my club's support in running for a Director's position on the GCSAA Board. Last year, at this time, I anticipated that my position would need four to five hours per week.

Like anything else, I had to sell the idea of serving on the GCSAA Board to the club. The key factors included the leadership role that GCSAA plays in the entire golf industry and the positive effects that our association will have on the future of golf. Additionally, our club was told of the time commitment necessary and a plan was developed to make the time available without any negative impact on the club. In fact, the club was shown all of the positives that would come from serving on the GCSAA Board and offered its full support. As I run for re-election in 1992, my club continues its support and has no regrets in the time

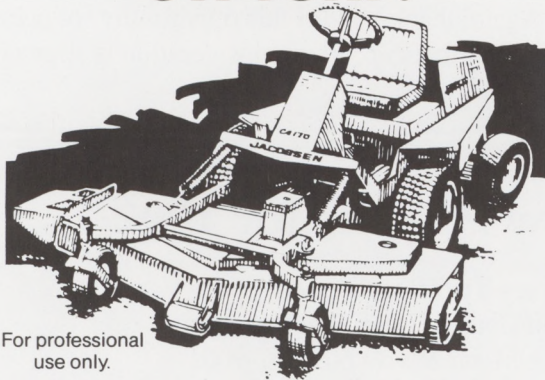
required to accomplish my service to GCSAA. Serving the membership of GCSAA has helped me to improve my own operations at my club. At times, there doesn't seem to be enough hours in the day to get all of the work done. But, through efficient management, we become better managers of our time and resources.

Paul S. McGinnis, CGCS

I have always been very active in the Cactus and Pine GCSA and have served on various state committees and advisory councils with the full support of the Board of Directors of Union Hills Country Club. I have been very honest with the Board of Directors about the time requirements to serve as a Director of the GCSAA. Prior to accepting the nomination, the Board of Directors of Union

(Please turn to page 14)

JACOBSEN. TOUGHEST CATS ON TURF.



For professional
use only.

Jacobsen Turfcats Out-Front Mowers, Models T422D, T436G

- Choice Of 22-HP Diesel Or 36-HP Gas Engine
- Dual-Range Hydrostatic Drive Matches Traction Speed to Mowing Conditions
- Rear-Wheel Power Steering
- Choice Of 50", 60", 72" Rotary Decks Or 60" Fine-Cut Flail
- Large 8.5-Gallon Fuel Tank

Wilfred MacDonald, Inc.

340 MAIN AVENUE, CLIFTON, N.J. 07014 • 201-471-0244

SAVE PAR

with GREEN T Liquid Fertilizer!

GREEN T[®]
LIQUID FERTILIZER

New

**FOR GOLF COURSES
& TURF GRASS**



PLANT FOOD COMPANY, INC.

Manufacturers of Fluid Fertilizers
Hightstown-Cranbury Station Road, Box 173
Cranbury, NJ 08512
609-448-0935 • 1-800-562-1291

Director candidates take stand



(Continued from page 13)

Hills Country Club gave me its full support and is honestly proud and excited about the nomination. I have surrounded myself with a very competent staff and pride myself with organizational abilities that will enable the crew to continue with my management program in my absence as necessary as a Director of GCSAA. More importantly, I have the full support of my wife, Kendra, and our four daughters. Without their help and support, it would be impossible to properly serve and be away from home the time required.

Joseph M. Hahn, CGCS

Having my club's support was crucial in my decision to run for a GCSAA Directorship. Developing a staff that is capable of handling the day-to-day operation of our golf facility was also very important. I feel the time required to serve GCSAA is in the best interest of Oak Hill and golf. Without interested people willing to carry on the commitment to preserve the capability of the superintendent to perform his duties and give the golfer the product they expect and deserve, we as an organization would cease to exist and golf would suffer for it.

Randy Zidik, CGCS

It would be a serious mistake for any candidate,

whether an incumbent or running for the first time, to make any assumptions regarding an employer's support. The commitment is substantial and the time involved is such that a formal statement of support is essential. Implied support through casual conversation is simply not sufficient and to proceed on that alone would be an injustice both to your employer and the membership of GCSAA. Your employer deserves the right to evaluate your job performance in relation to your volunteer service and the membership of GCSAA deserves your dedicated efforts on their behalf as well.

It is my personal policy to provide my Green Chairman with a schedule of known travel on GCSAA business at the beginning of each year. This list includes where and how long I will be there, the purpose of the trip and phone numbers where I can be reached. I believe over the past three years I have proven to my employer that with proper planning and communication, both jobs can be done equally well.

C. Wayne Perkins, CGCS

When asked by my local chapter to be a candidate for Director of the GCSAA, I immediately asked for my Board of Governors' blessings in this endeavor. The Board of Governors of Colonial Country Club has supported my serving on local and regional Board of Directors in many capacities in the past. With their continuous support, I will be able to serve as a Director of the GCSAA and superintendent of Colonial Country Club without conflict.

Again, thank you for this opportunity for presentation to your membership. Your consideration is appreciated.

New Patrons for 1992

Jersey Turf Specialists

Golf Course (Deep Tine Aeration)
Jack Montecalvo - 609-567-9001

Target Environmental Co., Inc.

Environmental Consultants/Contractors
Mark Hartman - Linda Crane
609-692-7575

Turf & Soil Dev./Isolite

Soil Development and Infrared photography
Peter Van Drumpt
908-922-4743



RHONE POULENC AG COMPANY
P.O. Box 12014, 2 T. W. Alexander Drive
Research Triangle Park, NC 27709
919/549-2000

Welcome back, Willet Wilt



To paraphrase Mark Twain, rumors of Willet Wilt's demise have been greatly exaggerated. To the regret of many, Willet has been coaxed out of retirement to do a column for the "Greenside".

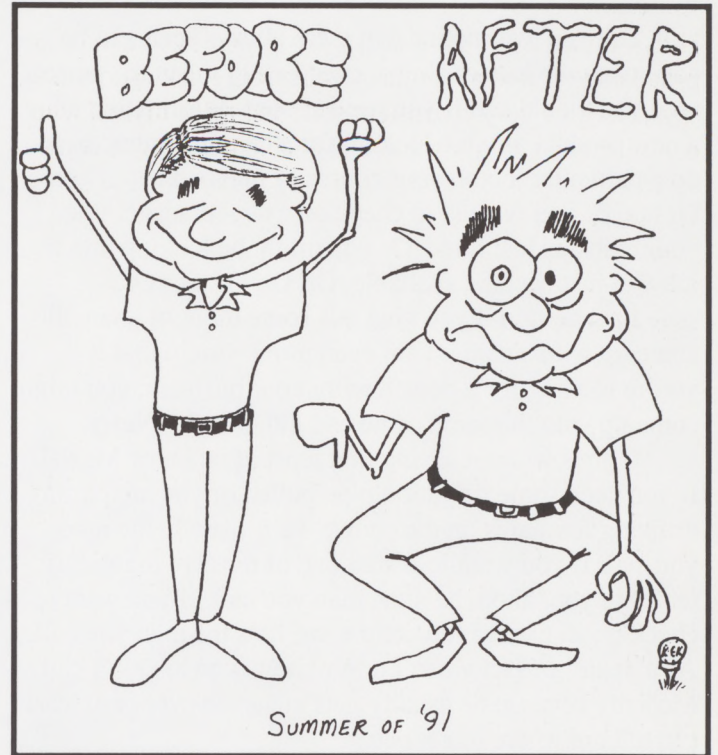
Because of the length of this summer, it has been decided by the GCSANJ Board of Directors to shorten summer '92 by two months.

There were periods of dry weather this past summer which lasted long enough that there were oases instead of ponds on the Jersey golf courses. Camel sightings were limited to a few member-guest outings.

This was a banner year for grubs. They were so big that when they surfaced, many golfers mistakenly identified them as shrimp.

The list of pesticides that are no longer available for use on golf courses keeps increasing. If we lose any more pesticides next season, we may be reduced to throwing rocks at our disease problems as the only alternative.

And, finally, an in-depth survey has revealed that the golf course superintendents are so worn down from this past endless summer, that they are on average two inches shorter than they were at this time last year.



Platinum Tee Club has banner year

The premiere support organization for GCSAA Scholarship & Research Inc. (S&R) had its most successful year ever with contributions totaling more than \$100,000 for 1991. The Platinum Tee Club was created just four years ago to promote S & R participation by private industry, golf clubs and associations who are concerned about the future of the golf industry.

Each member of the prestigious group contributes \$5,000 or more annually to support the activities of GCSAA S&R. With the latest addition of the Heart of America GCSA chapter, the Club now maintains a membership of 14 organizations including some of the top corporations in the golf business and the finest golf clubs in the world. The following organizations are current members:

- * American Golf Corporation
- * Ciba-Geigy Corporation
- * Deere & Company
- * DowElanco
- * E-Z-GO Division of Textron, Inc.
- * Florida GCSA

- * Georgia Turfgrass Association, Inc.
- * Heart of America GCSA
- * Jacobsen Division of Textron
- * Metedeconk National Golf Club
- * Rhone-Poulenc
- * Scotts ProTurf
- * The Toro Company
- * Valderrama Golf Club

Stephen Cadenelli, CGCS, president of GCSAA S&R's board of trustees said, "Chapter, club and business involvement in programs such as the Platinum Tee Club is imperative to the future success of our industry."

Cadenelli's club, The Metedeconk National Golf Club annually hosts the Robert Trent Jones Invitational, a fund-raising tournament that has now generated \$85,000 for S&R's Robert Trent Jones Fund in just three years.

GCSAA S&R is a 501 (c) 3 non-profit foundation dedicated to advancing education and science in the field of golf course management. Since its inception in 1956, the foundation has supported 1,000 promising turfgrass students through scholarships. The majority of these students

(Please turn to page 16)

X marks the spot

Did you ever notice that there always seems to be someone who knows almost everyone? I mean the person who you would call if you needed some information about a new product or were looking for a certain contractor to do a particular job on your course or maybe at your home. Or maybe you wanted to check on a new manager that your club has just hired. Or you might be looking into a job that just became available. Or, Or, Or, Or, Or.

I am certain if you give this some thought you will come up with a name. I am even more certain that if you're looking for a person within our business, you might come up with the same name as I did, **Jim McNally**.

It goes without saying that most of us know McNally. If you need some irrigation pipe pulled or you are putting drinking fountains on the course, he is usually the man you call. If you want to install one of those hydraulic lift tables in your shop, he's the man you call. If you want to check on an excavation contractor, he's the man you call. As a matter of fact when I don't know who to call, I call McNally because he usually gets me an answer or at least can tell me where to get one.

A few years ago we wanted to have a deck built at our home. Not knowing which way to turn, I called Jim because he lives a few miles from my home. Sure enough, he recommended a contractor who did a great job. Not only did he do the deck, but he did some masonry work that we needed. The guy is a jack of all trades.

You know every time I see that Bell Telephone commercial on TV with the fingers walking through the Yellow Pages it reminds me of McNally. I'll bet that he knows most of the businesses listed in that book. I would be willing to go so far as to bet that most know him.

The really interesting time comes with Jim when you attend the GCSAA National Convention. He knows more people than the president of our association. It is not uncommon to find him driving to Alabama or Kentucky to pick up a piece of equipment he purchased from a superintendent he met at the convention or golf tournament. If there is someone that doesn't know McNally, it's a person I don't know.

Well if you're expecting some reason that I am telling you about McNally, there isn't one. It's just that I've already mentioned **Pedrazzi, Flaherty, Rathjens, Malikowski, Martin, Kubik, Mongon and Cross** and needed another interesting character to highlight.

Well, until our next issue!

ED WALSH, CGCS

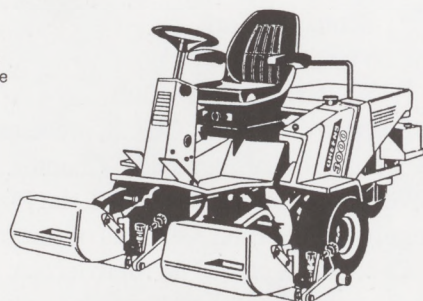
RANSOMES GREENS 3000 BRINGS GREENS CARE INTO THE 21st CENTURY

Versatile reel options
are all interchangeable. Choose from 9 blade front mounted Verti-Groom, 9 blade Greens, 7 blade Fairway and Tees, or Verticut reels.

High cutting frequency
of 138 cuts per yard at 4 mph with 9 blade reels.

Cutting height adjusts
quickly and easily without the use of tools to as low as 1/8".

Armchair comfort
reduces operator fatigue. Adjustable tilt steering wheel and power steering. All controls and gauges are in easy reach and sight. Padded seat with adjustable back rest.



**RANSOMES
GREENS 3000**

WHERE GREAT IDEAS START

For a **FREE** demonstration contact:

Steven Willand, Inc.
201-579-5656

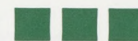
Platinum Tee Club has banner year

(Continued from page 15)

have gone on to careers in the profession and related fields like research, teaching, golf course design, course development and even course ownership.

More than 150 independent research projects have received support from GCSAA S&R. The majority of these have been cultural and breeding projects to develop new management practices and plant materials for golf courses.

Organizations interested in more information about the Platinum Tee Club or GCSAA S&R can contact the Development Department 913/841-2240 at GCSAA headquarters.



ASGCA PUBLISHES INAUGURAL MEMBERSHIP DIRECTORY

The American Society of Golf Course Architects has published a 120-page directory featuring valuable information on each of its 111 Associate and Regular members. The directory features a map showing the location of each member of the Society, which is comprised of leading golf course architects from the United States and Canada.

Individual member data includes a listing of representative courses, professional and personal background and the architect's design philosophy and strategy. The directory also provides information on the many advantages of hiring a qualified golf course architect and the key points to consider when remodeling a golf course.

To receive a copy of the 1991 ASGCA Membership Directory, please send a \$5 check to: The American Society of Golf Course Architects, 221 N. LaSalle St., Chicago, IL 60601.

DOGS AND THE USE OF 2,4-D

Recent publicity concerning a report entitled "Case-Control Study of Canine Malignant Lymphoma: Positive Association with Dog Owner's Use of 2,4-Dichlorophenoxyacetic Acid Herbicides," by Howard M. Hayes, et. al, Journal of the National Cancer Institute (83:1226-1231, 1991) has undoubtedly prompted inquiry concerning cancer causation in dogs. The study shows a modest association between malignant lymphoma in dogs and 2,4-D, with a 30% increased risk. The greatest risk was correlated, with four or more applications of 2, 4-D per year based on the dog owner's recall. **It is most unusual for either a homeowner—or especially a lawn service company—to make four or more applications of 2,4-D per year**, according to Roger A. Yeary, D.V.M., vice president of Health, Safety and Environmental Affairs at Chemlawn.

PAVELEC BROS. GOLF COURSE CONSTRUCTION Co. Inc.

98 Evergreen Avenue
Nutley, NJ 07110

*Specializing in all
phases of Golf Course
Construction*

Field Drainage/Landscaping
Excavation

Tony Pavelec (201) 667-1643
Emil Pavelec (201) 939-6182

Paul Sartoretto wins award

The New Jersey Turfgrass Association has announced that Paul Sartoretto of North Brunswick has been chosen as the recipient of the 1991 New Jersey Turfgrass Hall Of Fame Award. The Award was presented at the New Jersey Turfgrass Expo '91.

Paul received his Ph.D. in chemistry in 1937 from Notre Dame University. Paul's career in golf course chemicals began in 1946, when he sent a sample of his new product PMAS to the University of Rhode Island for testing as a fungicide on turf. It turned out to be not only an excellent fungicide, but more importantly, the first selective crabgrass killer ever discovered for turf. Prior to that discovery, the only way to remove crabgrass from Bentgrass Greens was to pick it out by hand. Paul also developed D.S.M.A. as a selective crabgrass control.

After studying the chemistry of pesticides, he was the first to devise safe rules for mixing pesticides in the spray tank, which are now universally accepted. Paul pioneered the blending of pesticides producing a broader spectrum of control. Paul, along with DuPont, initiated the first systemic fungicides for turf in the mid 1960s. Recognizing systemic resistant strains of fungi, he was the first to combine contact and systemic fungicides for better disease control. Paul converted many dusty wettable powder pesticides into safer to use flowables.

Lower extremity flexibility



This is not a political piece, although some political types have made a lot of money bending and making videos about stretching muscles. Sometimes in the course of our jobs, we have to bend a little. Sometimes we have to bend a lot (hey, this is serious . . . so pay attention). In the winter, we tend to get a little less exercise and may not be as limber as we should be. This is just a reminder that you have to plan for physical flexibility or you won't have it when you need it.



Stretching occurs when you move through the normal range of motion of a joint. You should stop when you experience mild tension. If it is pain you are feeling, you've gone too far. You should hold the stretch for 10 to 15 seconds with an even amount or slightly decreasing amount of tension. Don't stretch by bouncing a muscle. This can put a lot of strain into the system and gives less benefit. You never see an Olympic star stretch that way. They stretch using a static approach.

Try these two simple static stretching exercises and stay flexible this winter.

Lower Back Stretching. Lie on your back with your knees slightly bent. Raise the right knee towards your chest and grasp it with your hands. Pull the knee gently towards your chest. When you feel tension in your lower back and buttocks, hold for 10 to 15 seconds. Lower the knee and try this with the left knee. Repeat four or five times. You can try this with both knees at the same time, but make sure you're not alone.

A **Quadriceps stretch** is the typical jogger stretch. While standing up, bend your knee and grasp the ankle with the opposite hand. Pull the ankle toward your buttocks until you feel a stretch in front of your thigh. Don't bend at the hip because this defeats the stretch. Hold for 10-15 seconds, relax and repeat five times. Use your left hand for your right ankle or your right hand for your left ankle. Watch your balance; you may want to do this near a wall or

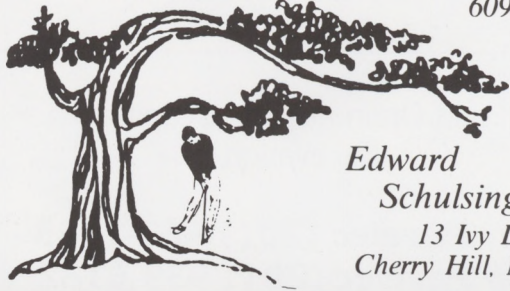
door that you can lean on with the free hand. Do not attempt to do both legs at the same time. You will fall down. I know because, well, never mind. Alternate legs and repeat four or five times.

If you go for a brisk walk before you do these stretches, they will be easier for you to do and will probably do you more good. The take home message is this. If you stay in shape, you are less likely to get hurt on the job, around the home or on the golf course playing.

All the world-class athletes do warm ups and stretching exercises and they are in shape. When you are not in the Olympic class, stretching is even more important. So the next time you have to bend over on the job, do it with style and flexibility.

If you like this type of information in "The Greenside", let the editor know. I'll be back.

Arnold



609-667-0939

*Edward
Schulsinger*
13 Ivy Lane
Cherry Hill, NJ 08002

**Horticultural Consultant
To The Golf Industry**

PATRON DIRECTORY

ALPINE TREE CARE, INC.

Complete tree care
Robert Mullane-Peter Orszulak-Brian Nadriczny
(914) 948-0101

AQUA-FLO, INC.

Irrigation System Designers and Suppliers
Phil Demarco - Jerry Purcell
(609) 561-1777 (800) 524-0895

AQUATROLS CORP. OF AMERICA

Manufacturers of Water Management Products
Andy Moore - Phil O'Brien - Drew Effron
(800) 257-7797

ATLANTIC MILLS INC.

Tee Towel, Tee Acces. and Ball Wash Detergents
Pete Donnelly - Jack Brady; (908) 774-4882

JAMES BARRETT ASSOCIATES, INC.

Golf Course Irrigation - Design and Consulting
Jim Barrett; (201) 744-8237

BLUE RIDGE PEAT FARMS, INC.

Top Dressing, Peat, Humus & Potting Soil
Gene Evans; (717) 443-9596

BRUEDAN CORPORATION

Yamaha Golf Cars - John Deere Turf Equipment
Bill Rapp; (800) 535-1500 (914) 469-2275

CIBA-GEIGY

Turf and Ornamental Products
Stephen Rezac; (908) 530-4252

W.A. CLEARY CHEMICAL CORP.

Somerset NJ
Bob Leslie; (201) 993-6696, (908) 247-8000

CONSOLIDATED STEEL & ALUMINUM

FENCE CO., INC. Fencing Contractor
Eugene T. McLaughlin; (908) 272-6262

ALAN G. CRUSE INC.

Golf Course Materials
Alan G. Cruse; (201) 227-7183 (201) 992-2335

DeBUCKS SOD FARM

Grower and Supplier of Bluegrass and Tall
Rescue Sod
Leonard DeBuck, Ray Dorsey; (914) 258-4131

DISPRO DISPLAY PRODUCTS CORPORATION

Manufacturer of Golf and Country Club Signage
Jerry Baine; (908) 988-5400

DOUBLE EAGLE EQUIPMENT

Turf Maintenance Equipment Clyde Ashton -
Jerry Pearlman - Stan Stevenson (908) 329-9292

EGYPT FARMS, INC.

Top Dressing, Construction Mix, Aqua-AID
John Strickland - Jeff Lecour - Dean Synder
(301) 335-3700

E-Z-GO/TEXTRON, INC.

New & Used Golf Cars & Turf Equip.
Tom Sauer, Branch Mgr.; John Myers, No. &
Cen. NJ; Paul Proter, So. NJ; (609) 586-4000

FERTIL-SOIL TURF SUPPLY, INC.

Greens Topdressing/Turf Supplies
Marty Futyma, Catherine Futyma
(908) 322-6132

FINCH GOLF & TURF COMPANY

John Deer Turf Equipment
Dennis Wagner - Mike Reynik - Ray Finch
1(800) 78-DEERE

FISHER & SON CO., INC.

Grass seed Fertilizers Chemicals
Allan C. Phillips - Frank Fisher - Mike Fisher
(800) 262-2127; (609) 478-6704

GOLF BY JANIS INC.

Golf Course Construction, Renovation, Irrigation
Al Janis; (301) 641-5108

GOLF CARS, INC.

Golf Cars, Utility Vehicles, Parts, Accessories,
Sales, Service; Jon F. Schneider, Gen. Mgr. -
John Czerwinski, Rep, Albert Wunsch, Pres.
(215) 340-0880

GRASS ROOTS TURF PRODUCTS, INC.

Golf Course Supplies, Ken Kubik - Bert Jones
(201) 361-5943 (908) 686-8709

GREENWOOD TREE EXPERTS

Full Service Tree Care
Bob Dubee; (201) 335-6650

JONATHAN GREEN INC.

Grass Seed, Fertilizer, and Turf Chemicals
Barry K. Green II - Ed Barbano - Todd T. Pretz
(908) 938-7007

JEP SALES INC.

Turf Maintenance Equipment, Sales & Service
Jack Poksay - Michelle Poksay
(609) 585-2300

REES JONES, INC.

Golf Course Architects
Rees Jones - Keith Evans - Greg Muirhead
(201) 744-4031

STEVEN KAY

Golf Course Architects
Stephen Kay - Ron Turek - Barbara Kotler
(914) 699-4437

KOONZ SPRINKLER SUPPLY COMPANY

Rainbird Irrigation Equipment
William Koonz; (201) 379-9314

LAWN & GOLF SUPPLY COMPANY

Specialists in Equipment and Supplies for
Maintenance of Turf
Sam Baird Jr.; (800) 362-5650

LESCO, INC.

Serving the GCSAA of NJ
Terry Frazier; (800) 321-5325

LEBANON CHEMICAL CORP.

Country Club Fertilizers & Chemicals
Steve Chirip; (717) 894-3133

LEON'S SOD FARM

Sod Grower
Samuel Leon - Irene Leon; (908) 996-2255

LOFTS SEED INC.

Turf Seed and Fertilizer Supplier
Dr. Rich Hurley; (908) 560-1590

LONGO MOTOR & PUMP, INC.

Electric motor/pump repair/sales
Cathy Hughes - Bob Tal; (201) 539-4141

RALPH MCGILLAN

Excavating Contractor, Lakes & Ponds
Ralph McGillan; (609) 655-2281

JOSEPH M. MERCADANTE, INC.

Cart Path, Tee, and Trap Construction
Joe Mercadante - Robert Mercadante
(201) 762-1195 (201) 763-0042

METRO MILORGANITE, INC.

Turfgrass Supplies
Rich Appgar - Scott Appgar; (914) 666-3171

MONTCO/SURF-SIDE

Wetting Agents/Defoamers
Robert Oechsle; (215) 836-4992

NK Lawn & Garden Co.

Medalist Turf Div., Turfgrasses for the
professional user
George Rosenberg - Branch Mgr.
Tom Koubek - Turf Specialist
(800) 828-5856

NOR-AM CHEMICAL CO.

Chemical/Fertilizer Manufacturer
Shaun M. Barry; (908) 846-8173

NORTHEASTERN ASSOCIATES

Sales & Service for Golf Course Industry
Vincent Dujets - Chuck Kolenut
(201) 227-0359

PARTAC PEAT CORPORATION

Golf Course Top-Dressing
Jim Kelsey (908) 637-4191

PAVELEC BROS. GOLF COURSE

CONSTRUCTION CO., INC.
Golf Course Construction
Tony Pavelec (201) 667-1643
Emil Pavelec (201) 939-6182

PLANT FOOD COMPANY, INC.

Manufacturer of Fluid Fertilizers
Ted Platz - Anthony "Rip" Rippl
(609) 448-0935 (800) 562-1291

POCONO TURF SUPPLY CO.

Turf Supplies
Ron Olsen; (215) 672-9274

P & P EXCAVATING INC.

Excavating Contractor, Lakes & Ponds, Equip.
Rental, Grading
Bob Laner; (201) 227-2819 (201) 227-2030

PRO LAWN PRODUCTS, INC.

Ingrid Kern; (215) 750-1732
Craig Lambert; (201) 663-3368
Brad Simpkins (609) 758-7620

ROCKLAND CORPORATION

Turfgrass Chemicals & Fertilizer
Steve Stys
(201) 575-1322

R & S LANDSCAPING CO., INC.

Specialists for Golf Course Construction
Claus I. Raven
(201) 278-0616

GEO. SCHOFIELD CO., INC.

Golf Course Supply
Kevin Schofield - Bob Carson - Tom Casmer
(908) 356-0858

THE SCOTTS COMPANY - PROTURF DIV.

Turf Fertilizers, Protectants, Seed
Fran Berdine (914) 361-4105
Steve Rudich (215) 253-4003

SEACOAST LABORATORIES, INC.

Granular Turf Prod., Grass Seed
John C. Moynihan - Richard G. Baker
(800) 522-4769

SEQUOIA TREE SERVICE INC.

Paul Portsmore - John Schaus - J.T. Kievit
(201)-891-0309

SHEARON ENVIRONMENTAL DESIGN

Golf Course Design and Construction
Chip Kern
(609) 466-0666 (215) 828-5488

STORR TRACTOR COMPANY

Turf Maintenance Equipment, Irrigation
Mary Lou Deschamps - Gene Tarulli -
Paul Granger
(908) 722-9830

WILLIAM STOTHOFF CO. INC.

Well Drilling, Pumps & Pump Repairs
William L. Stothoff III (Pete) - William E. Snyder
(908) 782-2717

SWEENEY SEED CO.

Seed (turfgrass)
A. M. Sweeney - Jeff Schockley - John Pew, III
(215) 275-2710

THE TERRE COMPANY

Seed - Fertilizer - Pesticides - Nursery stock
Byron Johnson - Bryan Bolchala - Pat O'Neil
(201) 473-3393 - FAX 473-4402

TURF PRODUCTS CORPORATION

Turfgrass Supplies
Ernie Rizzio - Buddy Rizzio - Larry Rizzio
Ron Lake (201) 263-1234

WILFRED MCDONALD, INC.

Turf Equipment Specialists
Dennis DeSanctis - Mike Pelrine - Blair Quin
(201) 365-6801

STEVEN WILLAND INC.

Turf Equipment Distributor
Mark Ericson - Bruce Pyc
(201) 579-5656

Baltusrol • Bedens Brook • Canoe Brook •
Shackamaxon • Spring Brook • Timber Trails and others . . .

What do the superintendents of these
prestigious golf courses have in common?

They use the services of . . .

KOONZ

SPRINKLER SUPPLY

. . . the smart choice for all your irrigation needs



SERVICE EXCELLENCE

- Complete inventory
- Service assistance and technical support
- 25 years experience

QUALITY PRODUCT LINES

Distributors of

RAIN BIRD®

HUNTER®

WEATHERMATIC®

Sprinkler Equipment

KOONZ

Sprinkler Supply, Inc.

39 Waverly Avenue • Springfield, N. J. 07081

(201) 379-9314

Branch Offices: Wall Township • Toms River • Hackensack