

Lawn Care

A discussion of the vital problems of lawn making and maintenance

PUBLISHED SEVERAL TIMES YEARLY BY

O. M. SCOTT & SONS COMPANY - SEEDSMEN - MARYSVILLE, OHIO

Vol. III

February 1930

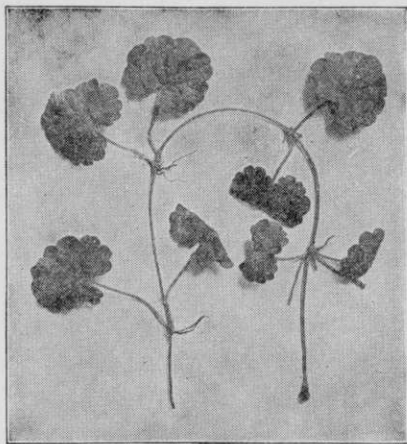
No. 1

A Common Lawn Pest and How to Kill It

GROUND IVY is the most familiar name for the lawn weed shown in the illustration, but there are others by which it is known in some localities: for example, Field Balm, Gill-over-the-Ground, Gill-Ale, Ale-Hoof, and Cat's-Foot. The association of ivy with ale is accounted for in the fact that years ago the plants were used to flavor and clarify home-brewed ale. Its other names have no doubt been efforts to describe the leaves and the habit of the plants to inhabit thickly any area which they infest.

PERENNIAL AND
CREEPS.

Ground Ivy is a perennial and propagates by means of seeds and root stocks. Blooms in small clusters of pale purple spotted with deeper purple, appear usually between the months of April and July. The seeding time is from May to August. The leaves of Ground Ivy are kidney-shaped, scalloped and green on both sides. The stems contain many joints at which roots develop.



GROUND IVY (*Glechoma hederacea*)

A SOCIABLE WEED.

Like Plantain, Ground Ivy is a domesticated weed, being most familiar around dwellings and in towns. By its very nature of growth Ivy protects itself against easy eradication. It is a very pronounced creeper and under close clipping, thrives. Ivy will frequently occupy the ground to the exclusion of all other vegetation.

Furthermore it becomes so entwined with the grass as to make hand digging almost impossible. For years this plant was rated as one of the most obnoxious lawn pests with which, says a Department of Agriculture bulletin, "one must learn to live rather than to entertain hope of its extermination."

A SURE CURE.

The old method of exterminating Ground Ivy was to skim off the shallow layer that contained the roots and relay new sod or reseed. Now it has been discovered that the plants can be entirely destroyed without lasting injury to the grass by a single spraying with a solution of Sodium Chlorate. Use one to two ounces per gallon of water on each 100 square feet (10 by 10 feet), providing a pressure sprayer is used. If applied with a sprinkling can, a

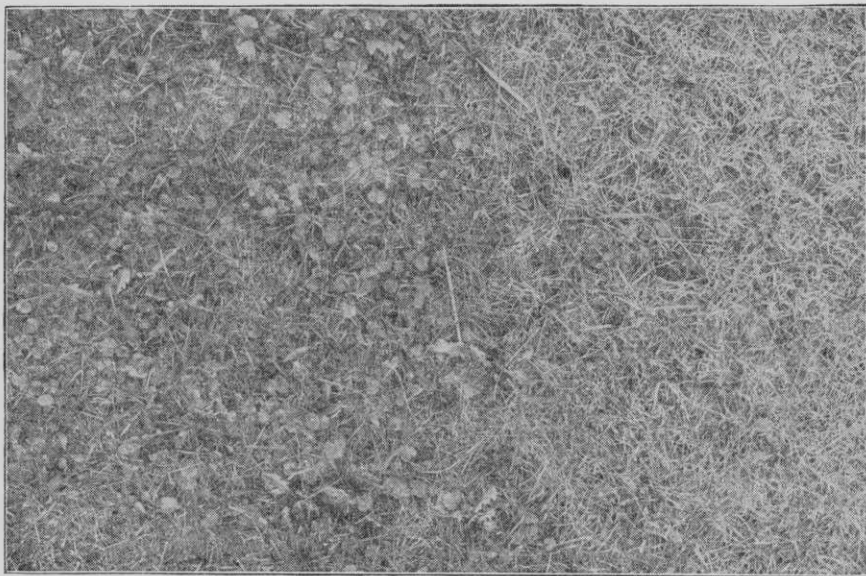
Consecutive No. 8



trifle more solution will be required as this method is somewhat more wasteful. The leaves of the Ivy should be thoroughly covered. While this plan can best be carried out in the fall, any time during the grass growing season will be satisfactory. The spray will discolor the grass for a short time, but will have no

on clothing. (For the illustrations used in this issue we are indebted to the Ohio Experiment Station at Wooster.)

Any of our readers who have successfully employed other methods of killing Ground Ivy are cordially invited to use these columns to disseminate such information.



SPRAYING KILLS GROUND IVY

Left, unsprayed; right, sprayed with Sodium Chlorate and reseeded

permanently injurious effect. When the Ground Ivy disappears there will likely be discovered a very thin stand of grass so that fertilizing and reseeding will be found necessary. If the Sodium Chlorate is used in the late fall it will be well to wait until early spring to reseed and fertilize, preferably when the ground is honeycombed. An area thus treated, fertilized and reseeded is shown in the illustration on this page.

CAUTION ADVISED.

Care should be exercised in the use of Sodium Chlorate. It is inflammable and will ignite from friction if allowed to dry

Heal-All and Crab Grass

MR. ALBERT A. FAULK, of 425 W. North Shore Drive, South Bend Indiana, has sent us a sample of heal-all and makes this comment:

"I find that sulfate of ammonia kills this very readily. As for crab grass I find that by raking this grass thoroughly with a dandelion rake, then cutting with the mower set low, I have gotten rid of at least two-thirds of the crab grass. This is the third year I have tried this plan and it works better than any other that I have found."