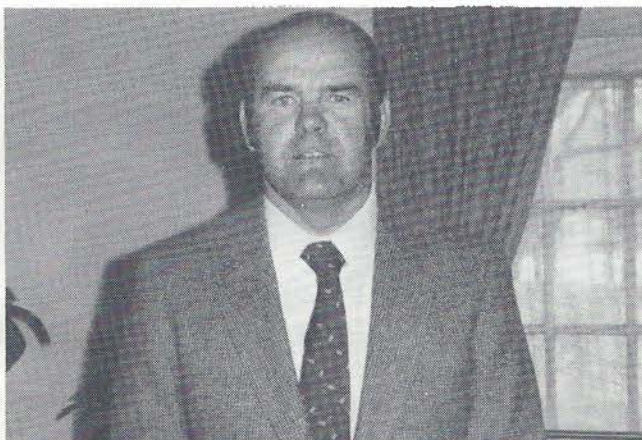


## Profile of a New President



Brian Cowan of Eastward Ho in Chatham, Mass. is the newly elected president of GCSANE. Cowan officially took over for Ron Kirkman of the Needham Golf Club after elections on January 5, 1982 at the Andover Country Club.

Brian began his career in 1962 at Spring Valley C.C. in Sharon, MA where he was a member of John Callahan's staff for three years. With some experience under his belt, he moved on to the Hampshire Club in Mamaroneck, New York, where he became assistant superintendent. After one year Brian received an opportunity to construct a golf course, so off he went to Fiddler's Green in Hyannis where he and Frank Murphy were instrumental in building and developing the golf course. Brian supervised the operation for a year after construction when he left for what has become his home...Eastward Ho. He was hired by Lou Kent as assistant superintendent and two years later when Lou retired, the membership looked no further than Brian. Thirteen years have passed and he is still on the job as superintendent. Brian has just completed this past season, the installation of an automatic sprinkler system on the course, an accomplishment his membership is very proud of.

Along with being a past president of the Cape Cod Turf Managers Association, he has been very active in our association. Brian has served as golf chairman and vice president prior to his newly elected position. Brian looks forward to the challenge and hopes he can carry on the tradition of those before him of having an active membership.

Being an avid golfer and sporting a handicap of five, Brian is a member of Cranberry Valley G.C., where he has been club champion the past three years. He resides in Harwich with his wife Joan and children Christopher, Cheryl and Jennifer.

Congratulations and good luck.

## Golf and the Super - Alive and Well

It costs more to play, its maintenance budget is said to border on the unbearable and its competition reportedly is on the verge of replacing it as a viable source of recreation and entertainment for the typical American family.

However, someone forgot to tell the game of golf its popularity is on the wane and that it is ready to occupy an insignificant place in our society. Alas - golf is alive, well and experiencing a period of growth which contradicts the state of the nation's economy.

So insist the latest research results of the National Golf Foundation which reports that people are playing the grand and ancient game more and apparently surviving the backlash of general economic decline around them.

Here, in the Northeast section of the country, the first three quarters of 1981 showed an increase of 8.8% in golfing activity. That figure compares favorably with the national mark of a 10.3% gain in number of rounds played. It also tells the golf course superintendent that he must be doing something right.

He's doing it right because, on the whole, playing conditions around the New England golf loop this past season were among the best the area's participants in the sport have enjoyed in many a moon.

Why? The perennial skeptic might point to a summer when the weather cooperated by failing to do any loop-de-loops in matter of producing stages of incessant rain or continual suppressive heat. It was, as a matter of fact, a typically attractive New England summer weatherwise - no extremes, so to speak.

However, with or without the aid of Mother Nature, your local golf course superintendent has reached that plateau in technical performance where his knowledge, experi-

*continued on page two*

## Next Meeting February 17, 1982 Franklin C.C.

Host Supt. Gary Luccini

Directors meeting - 9:30 a.m.

Regular meeting - 10:30 a.m.

Lunch

Educational program - 1 p.m.

Guest Speaker - Jeff Carlson from the Pesticide Board

Directions

From Rt. 495 King St. Exit to Rt. 140, club will be on right. From Rt. 95, take Rt. 1 to Rt. 140, club will be on left.

# Golf Course Superintendents Association

continued from page 1

ence and input finally supercede the elements.

Obviously, the condition of the golf course has much to do with the increased amount of play noted by the NGF's most recent survey.

This is notably true in the private course or country club sector where members are being exposed to a number of recreational outlets besides golf.

In the past 10 years, the country club has attempted to become a year-round and varied sports meeting place for its members. The high cost of gasoline and corresponding fuel crunch have influenced many families to abandon travel in pursuit of their recreational needs and funnel their financial outlay for them to facilities closer to home. Therefore, the country club has become the natural focal point of those needs.

So, golf and the golf course superintendent have been put on the spot. With tennis, swimming, spinoff racquet sports and the like competing with golf for the member's interest, the super has been faced with the challenge of providing playing conditions conducive to keeping his game the club's top participant attraction. And, according to statistics, he's come through with flying colors.

It's important to note that golf in the Northeast during the peak months of June, July and August (the same months when tennis and swimming hit their high points) recorded a substantial increase in number of rounds played. This means, of course, that it prospered at a time when the country club's other recreational offerings should have eaten into its popularity.

Although the NGF breakdown in participation failed to distinguish between golf participation on private and public courses, the latter sector is believed to have followed the same trend as the country club.

Municipal and public courses have become a recreational refuge for senior citizens in that most offer reduced rates and opportunities to take part in retired-age leagues and tournaments.

For example, one Western New England group has developed a sliding competitive operation which gives seniors a chance to play some of the top public layouts in that area. It's common to see more than 100 veteran swingers show for a particular event and they are staged at least once a week throughout the summer. This endeavor alone, has contributed to the overall increase in play.

The game of golf, then, has awakened from a period of dormant existence and is beginning to spread its wings again. Improved weather conditions, increased memberships and commercial advertising are some of the reasons for the general upswing in links activity.

However, in the middle of the spiral is the advanced conditioning techniques and heartening results from some of the golf course superintendents. The game itself, brings a player to a course. The work of the superintendent, though, brings him back time and time again.

Golf is in a healthy state and its doctor (the golf course superintendent) has contributed a lion's share of input into it. He has given it that much-needed professional touch. And it shows, oh my, does it show.

Gerry Finn

## 1981 Christmas Party at Needham G.C.



## Newsletter Wins Award

Our newsletter staff has won an award from the GCSAA. Gene Baston CGCS, chairman of the editorial committee for the national has notified us that we have won an award for "Best Original Editorial Content." The two people responsible are Chuck Lane and Gerry Finn. Chuck will be presented the award in New Orleans during the Convention. Congratulations to Chuck and Gerry for an outstanding job.

## Become Involved

The Newsletter staff welcomes all who would like to participate. Got an idea? Write an article, send a picture, a "turf tip," whatever. It's your newsletter, get involved.

## Upcoming Events

The USGA Green Section will be holding a one day conference and luncheon on Tuesday, February 16, 1981 at the Sheraton-Tara Hotel in Framingham. Registration will be at 8:15-9 a.m. You can pay at the door, but it will cost five dollars more, so if interested and you need a registration form, contact the USGA office at (201) 776-7770.

Dr. Troll's Mass. Turfgrass Conference and Industrial Show will be on March 2, 3, and 4. The complete program will be in our next newsletter.

### PRESIDENT

Ronald Kirkman  
25 Green St.  
Needham, Mass. 02192  
Home Phone 444-8412  
Office Phone 444-5548  
Club Affiliation  
Needham Golf Club

### FIRST VICE PRESIDENT

Brian Cowan CGCS  
Robins Way  
Harwich, Mass. 02645  
Home Phone 432-9041  
Office Phone 945-9230  
Club Affiliation  
Eastward Ho.

### SECOND VICE PRESIDENT

Donald Hearn CGCS  
4 Topeka Rd.  
Chelmsford, Mass. 01824  
Home Phone 256-8709  
Office Phone 894-5906  
Club Affiliation  
Weston Golf Club

### SECRETARY

David Barber CGCS  
145 Dedham St.  
Canton, Mass. 02021  
Home Phone 828-7266  
Office Phone 828-6540  
Club Affiliation  
Blue Hills C.C.

### TREASURER

Pete Coste CGCS  
121 Granite St.  
Medfield, Mass. 02052  
Home Phone 359-7247  
Office Phone 566-0240  
Club Affiliation  
The Country Club

### TRUSTEE

Meindert Schults  
737 Princeton Blvd.  
Lowell, Mass. 01851  
Home Phone 458-7605  
Office Phone 452-8228  
Club Affiliation  
Mt. Pleasant G.C.

### TRUSTEE

Melvin O'Kelly  
345 Plain St.  
Marshfield, Mass. 02050  
Home phone 834-4229  
Office Phone 837-3321  
Club Affiliation  
Marshfield C.C.

### TRUSTEE

Tom Schofield CGCS  
290 North Rd.  
Sudbury, Mass. 01776  
Home Phone 443-3712  
Office Phone 235-7333  
Club Affiliation  
Wellesley C.C.

### FINANCE CHAIRMAN

Robert Johnston CGCS  
128 Wilbraham Rd.  
Hampden, Mass. 01036  
Home Phone 566-3075  
Office Phone 566-3096  
Club Affiliation  
Hampden C.C.

## Topdressing...A Double Winner

As a superintendent, I believe the most beneficial practice I can perform is topdressing. The majority of golfers who play our courses will judge us on the playability of our greens. They want greens that hold, a smooth putting surface and consistency of speed. I'm sure we all have heard negative comments concerning these factors. Let's look at some of our problems. Thatch, compaction, poor soil structure and disease activity, are just a few. What better reasons to start a frequent, light topdressing program. Topdressing is, by no means, a cure-all for these problems, but it is our most resourceful tool for achieving what the golfer and the turf manager would like their greens to be.

Here at Pine Brook we have topdressed twenty-seven times in two years. The results have been staggering. The weak or in some cases no turf situation that persisted, is being changed to turf that will withstand a low height of cut and hold during the stress period. Positive results began to show during the first year and have continued to improve. It is also worthy to note that I have incorporated verti-cutting, aerifying and spiking into my topdressing program. Once we have built up a suitable layer of sand we can eliminate the aerification, if we choose.

My program begins in early April and continues every two weeks through the month of September. The material I use is a sand that meets USGA specifications. While preferring sand myself, I believe each superintendent must choose whichever material is best suited for his soil conditions. As long as it is as good or better than existing conditions, positive results will be achieved. In the last two years we have built up a minimum of one inch on all our greens. Each time we topdress we are putting down approximately one-fifth yard of sand per thousand square feet. This light application usually does not interfere with the flow of play and on most occasions the golfer is not even aware of it.

We use a Cushman topdresser to spread the material on greens and collars. It is worked in by hand using plug pushers, then brushed in. Finally, we syringe. I have found that by working the material in in this manner, there is very little pick-up when we mow the following day. I also fertilize each time, putting down between one quarter and one-half pound of nitrogen per thousand square feet. I feel this keeps the turf growing ahead of the sand. Using between four and seven men, the whole operation for all my greens will take between six to nine hours.

While realizing that we must deal with variables such as amount of play, projects and regular maintenance and that there aren't enough hours in the day to do all we would like, I have found that topdressing is a winner for both the golfer and myself.

Doug Johnson, CGCS



**Divot Drift...** Congratulations to Dick Duggan and his wife on the arrival of their new baby boy...There are four new faces on our slate for 1982. They are: Paul Miller of Tedesco, (a past educational chairman) and Steve Chivaroli of Tatnuck, both Trustees, Tony DeBettencourt of Andover as Educational Chairman and Doug Johnson as Newsletter Chairman...Congratulations are also in order to past Newsletter Chairman, Chuck Lane, who won an editorial award from the GCSAA...Golf Chairman Steve Murphy awarded the following for the 1981 golf season: Rick Arzillo, 1981 Champion; Kenny Mooridian and Gary Luccini, Superintendent team of two champions; Larry Bunn and Steve Butler, commercial team of two winners; Mark Klimm, Pro-Supt. champ and Kenny Mooridian and Robert Consoletti, Supt.-Greens Chairman winners...The Murph added a new twist by rewarding all superintendents who were hosts to a golf meeting during 1981. The recipients were: Brian Cowan, Mark Klimm, Doug Johnson, Paul Miller, Wayne Zoppo, Mark Taylor, Ron Milinski, Bob Grant and Jim Fitzroy. Steve did an excellent job this past season and also showed some of his Irish humor when asked where he lost the most turf during 1981. He had no verbal answer but his eyeballs looked above to his head...Thanks to Joe Troll for informing us on the pesticide certification credit situation. Our Feb. meeting should prove interesting with Mr. Carlson as our guest... Finally, hats off to Ronny Kirkman who did an excellent job in planning the Christmas party at Needham. Everyone who attended had a great time.

**New member** - Congratulations to Joseph Mondor of Crestview C.C. in Longmeadow, Mass.

**Job Opening** - Ould Newbury G.C.

**Contact** - Phillip Trussel, 369 High Rd., Newbury, MA 01950. Phone: 465-0368

**Job Opening** - Assistant Superintendent

Submit resume before Feb. 12. Apply to Robert Grant, CGCS Brae Burn Country Club, West Newton, Mass.

**GOLF CHAIRMAN**  
Stephen M. Murphy  
75 Woodland Ave.  
Lynn, Mass. 01904  
Home Phone 592-2554  
Office Phone 592-8238  
Club Affiliation  
The Gannon G.C.

**EDUCATIONAL CHAIRMAN**  
Richard C. Zepp  
88E Sterling St.  
W. Boylston, Mass. 01583  
Home Phone 835-4980  
Office Phone 234-2533  
Club Affiliation  
Whitinsville G.C.

**NEWSLETTER CHAIRMAN**  
Charles Lane  
5 Goodnow Lane  
Framingham, Mass. 01701  
Home Phone 872-7832  
Office Phone 875-4490  
Club Affiliation  
Framingham C.C.

**PAST PRESIDENT**  
Dean Robertson  
24 Riverview Drive  
Newbury, Mass. 01950  
Home Phone 462-4540  
Office Phone 745-7289  
Club Affiliation  
Kernwood C.C.

Information contained in this publication may be used freely, in whole or in part, without special permission as long as the true context is maintained. We would appreciate a credit line.

*Please patronize* **FRIENDS OF THE ASSOCIATION**

Bacher Corporation  
876 Boston Road  
Billerica, Mass. 01866  
Tel. 617-273-0398  
Turf and Snow Equipment

Baker Tractor Corp., Ford Tractors  
Harley Davidson Golf Cars  
Swansea, Mass  
Yamaha Golf Cars

Bordens Spreader Service  
Maynard, Mass.  
Tel. 617-897-2571  
Sales Rep. Jack Borden  
Bulk Limestone Dealer

C & J Lawnmower Service, Inc.  
474 Main St., Wilmington, Mass 01887  
Eric Oman - Sales Representative  
Tel. 617-658-2022

The Clapper Co.  
1121 Washington St.  
Newton, Mass.  
617-244-7929

Geoffrey S. Cornish & William G. Robinson  
Golf Course Architects  
Fiddlers Green, Amherst, Mass. 01002

Country Club Enterprises  
Club Car Golf Cars  
Tennis & Leisure Equipment  
P.O. Box 400, W. Falmouth, Ma. 02574  
617-563-2284

C.S. Curran  
T.R.C. Products, Oils and Greases  
7 Linden St., Framingham, Mass.

Chester Drake & Sons, Inc.  
222 Walnut St.  
Framingham, Mass. 01701  
Golf Course Construction  
617-875-7929

Gold Star Sod Farms, Inc.  
Sod & Pine Bark Mulch  
Canterbury, N.H. 603-783-4717  
Weston, Mass. 617-894-5474

The Charles C. Hart Seed Co.  
Weathersfield, Conn.  
Bob Kennedy, Rep.  
Roy Sibley, Rep.

Holliston Sand Co., Inc.  
Lowland St., Holliston, Mass. 01746  
Sand for topdressing and bunkers

I & E Supply, Inc.  
66 Erna Ave.  
Box 9, Milford, Conn. 06460  
203-878-0658

Tom Irwin, Inc.  
118 A St., Burlington, Mass.

Lakeshore Equipment & Supply Co.  
Mike Hannigan, Rep.  
Abington, Mass.  
800-321-5325

Larchmont Engineering and Irrig. Co.  
Larchmont Lane, Lexington, Mass.  
617-862-2550

The Magovern Co. Inc.  
27 Lawnacre Road  
Windsor Locks, Conn. 06096  
Tel. 1-800-243-7718 or 1-203-623-2508  
Louis C. Rogers, Vice Pres.

D. L. Maher  
Box 127, Concord St.  
N. Reading, Mass. 01864

R. F. Morse & Son, Inc.  
W. Wareham, Mass. 02576  
Tel. 617-295-1553  
J. Willen Roell, Rep.  
Larry Bunn, Rep.

N.E. Chapter Land Improvement  
Contractors of America  
Professional Conservation of Soil  
and Water. Contractor in your area,  
call Peter Whiting, Pres.  
617-877-5323

New England Sealcoating Co., Inc.  
Tennis Court Const. and Maintenance  
Sealcoating Hingham Inc. Center  
Hingham, Mass. 749-6800

Old Fox Chemical Inc.  
Fertilizers - Seeds - Turf Chemicals  
66 Valley St.  
E. Providence, R.I. 02914

Richey & Clapper, Inc.  
28 Rutledge Rd., Natick, Mass. 01760

Sawtelle Bros.  
565 Humphrey St., Swampscott, Mass.  
617-599-4856

Scott Associates, Inc.  
60 Water Street, Clinton, Mass.  
617-365-6341  
Pumps - Sales, service  
Installation - Vertical  
Turbine pumps specialists

Scotts Pro-Turf Div.  
Rep. Ed Wiacek 1-401-253-4284  
Rep. Kevin Lyons 1-617-366-4825

Tuckahoe Turf Farms, Inc.  
Slocum, R.I., Litchfield, N.H.  
1-800-556-6985  
Alan Anderson, Sam Mitchell

Tuco Products Corp.  
Div. of the Upjohn Co.  
Kalamazoo, Mich.  
David Sylvester, 203-828-3790

\* Turf Products Corp.  
36 Sword St.  
Auburn, Mass. 01501  
617-791-2091  
Charles Allen, Sales Rep.

\* Turf Specialty, Inc.  
84 Merrimac St., Hooksett, N.H. 03106  
Turf & Ornamental Supplies  
Ken Turner 617-263-7526

Valley Farms Nursery & Supply, Inc.  
133 Hopemeadow St., Rt. 10  
Simsbury, Ct. 06070  
Putting Green Sod for the Professional  
Joe Bidwell Pres.  
Bus: 203-651-8555, Res: 203-658-6886

White Turf Engineering  
5 Summer Dr., Winchendon, Mass. 01475  
617-297-0941

Phillip Wogan  
Golf Course Architect  
31 Budleigh Ave., Beverly, Mass.

\* Contributors to the Lawrence S. Dickinson  
Scholarship Fund

# NEWSLETTER

*Golf Course Superintendents Association*  
OF NEW ENGLAND, INC.



CHARLES LANE  
Newsletter Committee Chairman  
5 Goodnow Lane  
Framingham, Mass. 01701  
Home Phone 872-7832  
Office Phone 875-4490  
Club Affiliation  
Framingham, C.C.

PETE COSTE  
Business Manager  
LEON ST. PIERRE  
Co-ordinator  
GERRY FINN  
Contributing Editor

Return to:  
CHARLES LANE  
5 Goodnow Lane  
Framingham, MA 01701

**FIRST CLASS**

First Class  
U. S. Postage  
**PAID**  
Framingham, MA  
Permit 209