



THE NEWSLETTER

Golf Course Superintendents

Association OF NEW ENGLAND, INC.

Sponsors and administrators of the Troll-Dickinson Scholarship Fund — Awarded yearly to deserving Turf Management Students.

November 1992

December Meeting

Monday, December 7, 1992
Franklin C.C.,
Franklin, Mass.

Host Superintendent
Gary Luccini

10:00 a.m.	Board Meeting
11:30 a.m.	Regular Meeting
12:00 noon	Lunch
1:00 p.m.	Education

Reservations Required
Call by December 3
(617) 328-9479

You must pay by check—No Cash!!
Checks payable to GCSANE

Gary Luccini has been superintendent at Franklin C.C. for 23 years. He graduated from Stockbridge in 1962 and was then assistant at Dedham C.C. for five years. Gary then built Pine Oaks in Easton, Mass., a nine-hole course, before moving on to Franklin. In 1989 he was a consultant to the Hale Irwin Golf Service in the building of New England C.C. Married to wife Kathy, they have two daughters (Cheryl, 20, and Beth, 13) and two sons (Mike, 22, and Brian, 21). Both boys are in the turf management program at Stockbridge. In his spare time, Gary enjoys auto racing, golf, and hockey. He is the voice of Franklin High School hockey on Cable Channel 10, coaches a high school summer hockey league, and also for the spring Europa Cup.

Directions to Franklin C.C.: From the north - 128 South to 495 North towards Worcester. Take Franklin-King Street exit. Take right at ramp and follow 1-1/2 miles to set of lights. Take a right and follow for two miles. Club is on the right. From the south - 495 to Franklin-King Street exit. Take right off ramp. Follow to set of lights and take a right. Club is two miles on right.

Bob St. Thomas hails Willowbend's rebound

Apparently, no one's weeping for Willowbend, although there was a time in the not too long ago when everyone at the sleek, ultra-exclusive Cape Cod golf community pushed "Cry Me a River" to the top of the charts as it tried to run on four flat financial tires.

"There was a point when we were very close to closing operations," Bob St. Thomas said one day last month. "We'd had money problems, went through an auction and a bank failure, then the Feds (Federal government) took over and attempted to run the place on a shoestring. Even that was frayed. When they learned I had to hire some people to keep things going, they refused to pick up that expense and told me to close the course."

St. Thomas, director of golf at Willowbend Club and in on the ground floor when the venture was launched in 1986, could not see that happening. Somehow, he managed to get a skeleton crew together and keep Willowbend alive—with 28 members, yet.

That was in the spring of 1990 and St. Thomas turned the mega-million development into a self-sustaining operation by running it as a public course. One year later, a "fireman" came to the rescue.

Paul Fireman, chief executive officer of Reebok International, purchased Willowbend and breathed a much-needed second life into the project. Remember, the one-time Thorny Lea caddie once had his sights set on buying the NFL New England Patriots. Obviously, he displayed remarkable purchase selection by turning his back on the Patriots and taking Willowbend under his wing.

The move is golden, both for the ambitious intentions of the golf community (originally, condominium prices started at \$350,000) and St. Thomas who was on the edge of leaving the scene and entertaining promising offers to return to the golf course superintendent's field from more than one reputable country club.

"I'm re-energized and ready to complete the job of making this an operation that rates right up there with the best in the game."

Bob St. Thomas

"But I never really was serious about pulling out," St. Thomas reminded himself that, like Fireman, he doesn't believe in abandoning a sinking ship when he still has the strength to keep bailing out the water. "There's just too much potential for something special to happen here. Sure, I missed a couple of paydays, but my back salary eventually caught up with me. Now, with a proven successful leader like Paul Fireman calling the shots, I'm all ears. I'm re-energized and ready to complete the job of making this an operation that rates right up there with the best in the game. We've got all the ammunition to reach that goal with Paul Fireman's vision and stability leading the way."

continued on page 2



PRESIDENT
 Stephen A. Chiavarioli, CGCS
 6 Birch Street, Paxton, MA 01612
 (H) 508-752-0031 — (W) 508-791-5373
 Club Affiliation - Tatnuck C.C.

VICE PRESIDENT
 Edward L. Brearley
 189 Matfield Street, W. Bridgewater, MA 02379
 (H) 508-584-6568 — (W) 508-295-7010
 Club Affiliation - Bay Pointe C.C.

SECRETARY
 Robert DiRico, CGCS
 326 Fuller Street, West Newton, MA 02165
 (W) 617-527-6968
 Club Affiliation - Brae Burn C.C.

TREASURER
 Paul Jamrog
 P. O. Box 38, Belchertown, MA 01007
 (H) 413-323-8519 — (W) 413-536-4195
 Club Affiliation - The Orchards G.C.

TRUSTEE
 Richard Duggan, CGCS
 93 Warren Ave., Marlboro, MA 01752
 (H) 508-485-6894 — (W) 508-369-0879
 Club Affiliation - Concord C.C.

TRUSTEE
 Eric E. Newell, CGCS
 113 Cross Street, Hanover, MA 02339
 (H) 617-826-7207 — (W) 617-878-5836
 Club Affiliation - Rockland C.C.

TRUSTEE
 James Reinertson
 42 Rice Road, Wayland, MA 01778
 (H) 508-655-7415 — (W) 508-358-2750
 Club Affiliation - Wayland C.C.

FINANCE CHAIRMAN
 Robert Ruszala
 69 Gelinus Drive, Chicopee, MA 01020
 (H) 413-592-5780 — (W) 413-256-8654
 Club Affiliation - Hickory Ridge G.C.

GOLF CHAIRMAN
 James Fitzroy, CGCS
 357 W. Squantum Street, N. Quincy, MA 02171
 (H) 508-528-6956 — (W) 617-328-1776
 Club Affiliation - Presidents G.C.

EDUCATIONAL CHAIRMAN
 Kevin F. Osgood
 62 Maple Street, Hyde Park, MA 02136
 (H) 617-364-4859 — (W) 617-254-0925
 Club Affiliation - Newton Comm. G.C.

NEWSLETTER CHAIRMAN
 Kip Tyler, CGCS
 P. O. Box 671, Peabody, MA 01960
 (H) 508-462-9272 — (W) 508-532-2236
 Club Affiliation - Salem C.C.

PAST PRESIDENT
 Paul Miller, CGCS
 1 Leicester Road, Marblehead, MA 01945
 (H) 617-631-7910 — (W) 508-369-5704
 Club Affiliation - Nashawtuc C.C.



KIP TYLER, CGCS
 Newsletter Editor
 PAUL JAMROG
 Business Manager

GERRY FINN
 Contributing Editor

Information contained in this publication may be used freely, in whole or in part, without special permission as long as the true context is maintained. We would appreciate a credit line.

continued from page 1

The Fireman credibility already has shown itself in putting Willowbend back on the map of budding golf establishments.

Things took a hop, skip, and a big jump in July when Fireman gathered several celebrities, including a few Reebok ambassadors, to take part in an informal pro-am tournament at Willowbend. Aboard for the "no purse" event, that attracted galleries in the 3000 range, were such golf notables as Greg Norman, Brad Faxon, Billy Andrade, Mark O'Meara, Miller Barber, Joey Sindelar, Billy Ray Brown, Hal Sutton, Craig Parry, Andrew Magee, D.A. Weibring, Charles Coody, Orville Moody, and Kay Cockerill.

"That's how Paul's presence here picks up the overall confidence of the place," St. Thomas explained. "Now, he's talking about a special two-day event for next summer; and down the road he knows that our facilities are just perfect for a senior event on the Cape where year-round and summer residents long for such a tournament."

Meanwhile, St. Thomas is redirecting most of his attention and knowledge to the golf course. Three new holes are on the drawing board and other changes will be forthcoming in keeping with the pledge to make Willowbend a true championship course.

"At our low point that 28 figure represented our entire membership. At last count, it had reached 150, with additional inquiries being processed all the time."

Bob St. Thomas

"There are two drawbacks of a physical nature here," St. Thomas disclosed. "The course has six par-three holes and the walks between holes are endless. In time, there will be modifications to correct this situation. Just for starters, we're replacing a par three and par five on the back nine with two, strong par fours."

The revitalization of Willowbend appears to be bucking a sluggish economy in that interest in club membership has been renewed and the numbers are on the rise.

"At our low point that 28 figure represented our entire membership," St. Thomas told. "At last count, it had reached 150 with additional inquiries being processed all the time. And we're sticking to our original heavy dues structure that includes a big chunk of money for a returnable certificate of good faith."

Willowbend, located on over 400 acres of traditional Cape Cod landscape in Mashpee, will be perkling with activity from here on in. A four and one-half million dollar clubhouse has just been completed and additions to it are on the way. Obviously, it's been taken off a life support system. That means Bob St. Thomas is as enthusiastic as ever about his vital role in the operation. "My batteries are recharged," he quipped. "And the way I feel now, they're guaranteed for life."

GERRY FINN

ANAHEIM

GCSAA 1993

**64th INTERNATIONAL
 GOLF COURSE
 CONFERENCE AND SHOW
 JANUARY 23-30, 1993**

↑

TRADE SHOW

↓

↑

GOLF CHAMPIONSHIP

↓

↑

EDUCATIONAL SEMINARS

↓

↑

GCSAA ANNUAL MEETING

↓

**ANAHEIM CONVENTION CENTER
 ANAHEIM, CALIFORNIA**

Calendar

Dec. 7	Franklin C.C. Franklin, Mass. Regular Meeting
Jan. 11, 1993	Franklin C.C. Franklin, Mass. Annual Meeting
Jan. 23-30	GCSAA International Golf Course Conf. & Show Anaheim, California
Feb. 8	Franklin C.C. Franklin, Mass. Regular Meeting

The Super Speaks Out:

This month's question: How do you handle the sometimes sticky situation of frost on the greens and how do you temper the potentially abrasive reaction to playing restrictions by members?

Arthur Miller, Nabnasset Lake Country Club: "No doubt, once the leaves begin to fall in October, it brings with it another problem of what to do when you arrive at the golf course and find everything covered with frost.

"My main thrust is through education. Number one, I make sure there is some mention of frost and the damage it can cause in our in-house newsletter. Number two, I buffer that information with proper signs on the first tee.

"Frost is a tricky situation here. You can live ten miles from the course and encounter little or no frost. However, Nabnasset Lake is situated in a pocket that's prone to frost. Therefore, there's little or no warning of frost for golfers arriving early to start a daily round.

"My only recourse is to shut down operations until the frost lifts. Usually, this means about a two-hour delay. Therefore, in frost times, it's rare that any golf here is able to be played until at least nine in the morning.

"My only recourse is to shut down operations until the frost lifts."

Arthur Miller

"But there are alternatives to keep the disappointment down. Often we adjust play to conditions. By that I mean we start rounds on holes where there is ample sun exposure. That helps and members seem to be able to live with that arrangement.

"Overall reaction appears to be split. Our regular members or those who've been around here several years, appreciate the fact that playing on frost-covered greens can eventually hurt the plant and that they'll pay for the damage the following spring. Our newer members see things differently. They look at those nasty blue footprints as something that will go away in time and have no lasting effect on the

condition of the green. Their education then becomes one of my top priorities.

"Sure, most of the damage heals over. However, my members are pretty good about taking chances with frost. In fact, my biggest headache is a shortcut local kids take to get to school. They tramp through the golf course and across frost-hit greens. It's no picnic to see a green full of those ugly footprints and realize that somebody other than golfers have made them. In the end, frost is another touchy problem the golf course superintendent must learn to live with."

"I try to speed up the defrosting process by watering the greens."

Arthur Billingham

Arthur Billingham, Indian Meadow Golf Club: "As a three-way source of control here (owner, super, pro), I'm in a position to dictate terms of what happens when the frost season hits. It's always early, too, because Westboro is one of those strange cold spots in the area. I'd guess that it averages eight degrees cooler than surrounding towns.

"The location of Indian Meadow is so critical that (here it is September) we have had five or six days when frost hit the course.

"My policy is that no one plays until the frost is off the greens. I try to speed up the defrosting process by watering the greens, splashing off the frost. However, my delays run about normal or about two hours.

"Since we are a new golf course, we have a small amount of members and they seem to understand that it just doesn't make any sense to play when the course is under a siege of frost.

"Personally, I'm not all that concerned with the possibility of permanent damage resulting from playing under frosty conditions. However, those black footprints do nothing to enhance the appearance of the

course and I'd just as soon see golfers hold off to avoid that sight. And they do. They just get used to the situation and get here a couple of hours later."

Mike Hermanson, Gardner Municipal Golf Course: "Don't tell anyone, but it gets real cold up here. For example, in September we had ten days when the temperature hit a low of 22 degrees.

"Naturally, then, we have to deal with a lot of frost and make our players aware of restrictions it causes on starting times.

"So, the first thing they see when they enter the pro shop is a large sign, spelling out the fact that no golf is played here as long as there is a show of frost.

"This makes it kind of hard because we have an early-bird mentality in Gardner. You think I'm kidding. Starting in June, we have at least 70 players tee off before 7 a.m. on weekends. Talk about shots in the dark!

"Our golfers cooperate with our directives concerning frost. It's nothing to see a three-hour delay, but they're used to it and they wait it out with more patience than you'd expect.

"My thinking always has been that the first frost of fall is critical. To me, those black footprints are bad omens and they very well could end up causing turf loss next season.

"That's why we're strict with the delay system. I have a good relationship with the pro shop in this situation and the restriction rules are strictly enforced. Strangely, we let golfers play until the first appreciable snowstorm. After that, they pack it in, and because of their compliance with frost rules, they usually have a pretty good track to play on come the following spring."

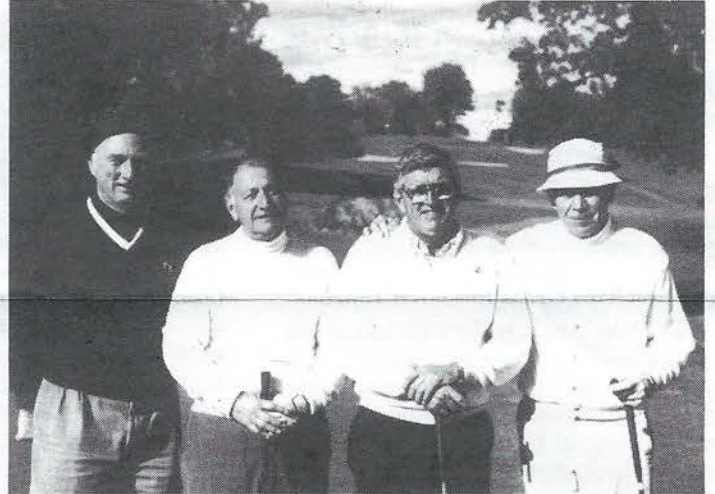
GERRY FINN

"Those black footprints are bad omens ... they could end up causing turf loss."

Mike Hermanson

Superintendent - 3 Club Official Tournament October 5 at Metacomet Country Club, East Providence, Rhode Island

At left are host Metacomet Country Club Superintendent Keith Gavin (left) and guests. At right are Bert Frederick (third from left) and guests from Vesper Country Club. (Photos by Kip Tyler)



A message from the President

The 1992 growing season is coming to an end as we wind up our leaf removal and renovation procedures. It has been a very long season and here's hoping that all our members are able to find time and resources that will enable them to get away this off-season to their vacation destinations.



The month of October seems to have always been the busiest month for the playing of the game by those who manage golf courses. Starting with the Supt.-Club Official Tournament on October 5 and ending with the Pro-Super Tournament on October 20, many of us have had a particularly busy month for playing...On October 5, Vice President Ed Brearley and myself had the pleasure of inviting Mr. Richard Haskell, Executive Director of the Mass. Golf Association, and Mr. Robert Donovan, Executive Director of the

Ouimet Fund, to join us at the Metacomet Country Club for lunch, golf, and dinner. Our guests must have been impressed with our Golf Committee's organization; I certainly was, and as has become customary, Chairman Jim Fitzroy and his committee did another tremendous job of running the tournament.

The Research Tournament was held at the International on October 13 and was a tremendous success. The specifics of this event will undoubtedly be covered in detail by Paul Miller and Ed Brearley elsewhere in this newsletter or in an upcoming issue. However, I would like to state at this time that I feel that this event was exceptional. Paul Miller and Chip Brearley, along with huge efforts from Kevin Lyons, Owen Regan, Richard Duggan, and Mike Nagle, worked some long hours in planning for and conducting this event. It was first class. Superintendent Ron Milenski and company gave the participants a superb course and Ron even brought his entire fall grounds crew to dinner. It is my understanding that Mr. Brian Lynch, the fine general manager at the International, was very instrumental in the planning of the day's activities and with the arranging of the vacation raffles. He gave much of his own personal time to make this day extra special. Thanks Brian and to all of the International's members and staff for having us.

The Pro-Superintendent Tournament was played at the Ferncroft Country Club on October 20. Superintendent Paul John-

son had his course in excellent condition. Thanks again to the New England PGA and Club Car for making this day a continuing success. This event, officially entitled the Shanahan Memorial Tournament, brings the superintendent and the golf professional together annually, and is probably the year's most popular event.

Our last golf date for 1992 will have been played at the Whitinsville Golf Club on November 5. Thanks to Richard Zepp and the members of this fine Donald Ross course for making the facility available to our association. I had the pleasure of playing golf on October 8 at the Dedham Polo and C.C. for the annual meeting of the Ouimet Fund and on October 15 at the Nashawtuc C.C. for the annual meeting of the MGA. Mark Spaulding and Paul Miller had their courses in great shape for these two events. Incidentally, Mr. Ted Kenerson is the newly-elected President of the Ouimet Fund. Ted is a member of the Brae Burn C.C. and succeeds Denny Goodrich of the Dedham Polo and Country Club.

It should be noted that Randy Kehres and Bruce Packard have earned their CGCS status from the GCSAA this past summer. Along with new member Peter Lunde, these three gentlemen become the 49th, 50th, and 51st members of the GC-SANE/CCTMA chapters of GCSAA to have current and active certified status from GCSAA in Kansas. Well done.

STEPHEN CHIAVAROLI, CGCS

GCSANE Turf Grass Research Tournament results

The 4th Annual GCSANE Turf Grass Research Tournament was held Oct. 13 at the International G.C. in Bolton, Mass.

Proceeds from tournament fees, tee and green sponsor signs, raffle, and other donations are used to fund turf research at local universities.

This year the event was hosted by the International Golf Club: Mr. Brian Lynch, General Manager; Mr. Robert Sanderson, Director of Golf; Ms. Mary Cleaven, Asst. Executive Manager; Mr. David Brown, Executive Chef; and Mr. Ron Milenski, Superintendent of Golf Course Properties.

The first Turf Grass Research Tournament was held in 1989 at the Dedham Golf and Polo Club. In 1990 the tournament was held at the Nashawtuc Country Club, proceeds from both plus donations established a permanent fund. In 1991 the Turf

Grass Research Tournament was held at The Country Club. The first grant was awarded in 1990 to fund the purchase of a pesticide storage building at the University of Massachusetts turf plots at a cost of \$7,800.

The following grants totaling \$16,718 were awarded in 1991: Dr. Pat Vittum, University of Massachusetts, \$1750, Sub-surface placement of pesticides; Dr. Rob Wick, University of Massachusetts, \$5000, Pathogenicity and management of plant parasitic nematodes in putting greens; Dr. Gail Schumann, University of Massachusetts, \$2,168, Summer Patch Disease Study; Dr. Richard Cooper, University of Massachusetts, \$7800, Bentgrass Cultivars for Putting Greens, Green rootzone modification with Isolite, Pesticide Volatility and Dislogeable Fobar

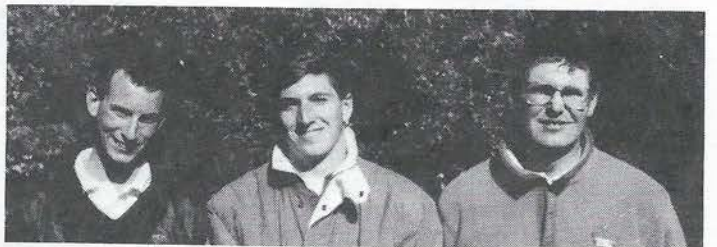
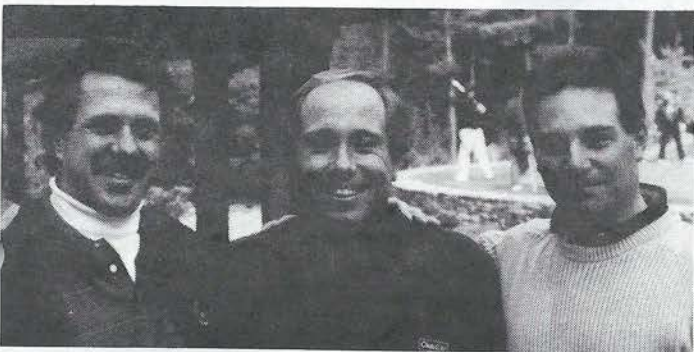
Residues, Summer Labor on Turf Plots, Subcontract of certain work to Dr. J.D. Wilson at the University of Guelph.

Research grants that totaled \$19,741.35 were awarded in 1992: Dr. Gail Schumann, University of Massachusetts, \$2,797.30, Necrotic Ring Spot and Summer Patch; Dr. Stanley Swier, University of New Hampshire, \$5,694.05, Forecasting Black Cutworm Larvae on golf course greens and biological control with Enlmapathogenic Nematodes via Envirocaster; Dr. Pat Vittum, University of Massachusetts, \$3,250, Black Turfgrass Ataenius studies and Sub Surface placement technology; Dr. Robert Wick, University of Mass., \$6,000, Studies

continued from page 5

Scenes from the GCSANE Turf Grass Research Tournament at the International G.C., Bolton, Mass.

At right is a view of a par 3 hole at the International. Just below are (l. to r.) Daryn Brown; Jim Faureau, International Assistant; and Ron Milenski, International Superintendent. At bottom right is a car that was one of the tournament raffle prizes. At bottom left are (l. to r.) Mike Cornicelli, Dave Farina, and David Mucciarone. (Photos by Kip Tyler)



continued from page 5
of the Pathogenicity and management of plant parasitic nematodes occurring in putting greens; and GCSAA Exposure Study, \$2,000, Chronic pesticide exposure and its effects on superintendents, course workers, players, and neighbors around the course.

The 1992 Tee & Green Sponsors: PIE Supply, Tom Irwin, J.P. Roberts Co., NEPGA, Modern Aeration Service, Tee & Green Sod Inc., Lesco Inc., Turf Products Corporation, Turf Specialty Inc., N.E. Club Managers Assoc., Sawtelle Brothers, Nardone Sand & Gravel, R.F. Morse, Country Golf Inc., Lebanon Fertilizer, The Borden Co., Dow/Elanco, O.M. Scotts & Sons, Pro Lawn Products, Massachusetts Golf Assoc., D.L. Maher, Rhone Poulanc Agri. Co., Boston Irrigation, Bartlett Tree, Turf Enhancement, Agri-Turf, The Anderson's Lawn Prod., Chester Drake & Sons,

Ransome America, Club Managers Assoc., and The Ouimet Fund.

Donations by: Wayland C.C., Quirk Family; Foot Joy, Dave Woods; Three-in-One, Linda Grillo, Gayle St. Louis, Marylou Kepinska; Pro Shop Sales, Tom Boyle; Bob Patton; Heritage Hills C.C., Charlie Dickow; Titleist, Dan Nives and Dan Curtis; Hammond Paint and Chemical, Joe Lazzaro; and Baker Golf Cars.

Rounds of Golf Donations: Thorny Lea Country Club, Foxboro Country Club, Thompson Club, Metacomet Country Club, Bay Point Village and Country Club, Kittansett Country Club, Poquoy Brook Country Club.

A special thanks to the GCSANE Research Committee for their time and effort: Edward Brearley, Mike Nagel, Dick Duggan, Owen Regan, Kevin Lyons, and Paul Miller.

1992 Turf Grass Research Tournament Results:

Gross		
1st	Walt Lankau - Bill Cleary	71
2nd	David Farina - Keith Gavin	71
Net		
1st	Dave Schemerhorn - Tim Laryman	60
2nd	Joe Lazzaro - Bob Eddy	61
3rd	Joe Rybka - Richard Nota	64
4th	Charlie Dickow - Bill Kennedy	65
5th	Mike Cornicelli - Lou Cascella	65
6th	Jeff Carlson - Scott Stettner	66
Closest to Pin		
#4	Chip Brearley - Hole in One! (won a set of golf clubs)	0'0"
#7	Pat Vittum	4'3"
#13	Dick Gurski	3'6-1/2"
#16	Prasanta Bhowmik	13'4"
Longest Drive		
#5	Larry Brown	
Straightest Drive		
#12	John Lenhart	

Raffle
Steve Chiavaroli won a trip to Tucson, Arizona.

DIVOT DRIFT ...announcements...educational seminars...job opportunities ...tournament results...and miscellaneous items of interest to the membership.

POSITION AVAILABLE

Golf Course Superintendent - Stow Acres Country Club, 25 miles west of Boston in Stow, Mass. seeks a talented individual as Golf Course Superintendent for this "Top 50" 36-hole public golf complex. Applicant must have: at least five years experience as superintendent or first assistant at a course in New England or similar climate; ambition and vision to lead efforts to prepare for the 1996 USGA Amateur Public Links Tournament; excellent organizational, planning, and management skills; budgeting experience; knowledge of DEP and OSHA requirements; Chemical Applicators License, and a degree in agronomy or related field. Send resume and compensation history to Walter Lankau, President, Stow Acres C.C., 58 Randall Road, Stow, MA 01775.

POSITION AVAILABLE

Greens Superintendent - The Brockton Country Club, a nine-hole golf course located in the city of Brockton, will be accepting applications for the position of greens superintendent until December 19, 1992. Candidates must have a chemical license, be familiar with work planning and budgeting, and have supervisory experience. Salary negotiable. Please send resume and salary requirements to: W.H. Peckham, President, Brockton Country Club, P.O. Box 3071, Cam-pello, MA 02404.

POSITION AVAILABLE

Grounds Superintendent, Fenwick Golf Course - Full time position. Looking for a mature, educated, and certified individual having a minimum of five (5) years golf course experience with at least two (2) years in a managerial capacity. Salary opportunity - 30 to 45K based on experience. Housing, if desired, will be available at minimal expense. Fringe benefits include paid insurance plan, sick days, paid holidays, and pension plan. As indicated in the Summary of Responsibilities, this individual will be responsible for the maintenance of the park, which is a passive park; the golf course, which is an active golf course; and the Borough roads. Fenwick is a small, residential community located on Long Island Sound at the mouth of the Connecticut River. Fenwick is a family community with a wonderful opportunity for the right individual.

CERTIFICATION

Bruce Packard, superintendent of Stockbridge Golf Club, has been designated a Certified Golf Course Superintendent (CGCS) by the Golf Course Superintendents Association of America (GCSAA). Packard has been superintendent of the Stockbridge, Mass. course since 1990. He lives in Worthington.

MEMBERSHIP

Welcome New Members: Peter Bissel, Regular member, Ipswich C.C., Ipswich, Mass.; David Dwinell, Regular member, Wollaston G.C., Milton, Mass.; and David Murphy, Assistant member, Cedar Hill G.C., Stoughton, Mass.

GOLF RESULTS

GCSANE
Superintendent-3 Club Official
Metacomet G.C., October 5, 1992

1st Gross	Metacomet C.C.	67
1st Net	Heritage Hills	57
2nd Net	Nashawtuc C.C.	59
3rd Net	Prupooduck	59
4th Net	Salem C.C.	59
5th Net	Presidents	60
5th Net	Needham	61
7th Net	Wampatuck	62
8th Net	Eastward Ho	62
9th Net	Westboro	62

Long Drive	Superintendent Keith Gavin
Long Drive	Club Official Dan Johnson
Closest to Pin	Superintendent Brian Cowan
Closest to Pin	Club Official Hugh Callaghan

Please Patronize These FRIENDS OF THE ASSOCIATION

A-OK Turf Equipment

8 Boulder Dr., Coventry, RI 02816
Buy & sell used turf equipment
Mike Cornicelli (401) 826-2584

AA Will Materials Corp.

168 Washington St., Stoughton, MA 02072
Top dressing, sand, loam, trap sand,
decorative stone, landscape materials
Est. 1886 - 1-800-4-AAWILL

Agriturf, Inc.

59 Dwight St., Hatfield, MA 01038
Fertilizer, seed, and chemicals for turf
1-800-824-2474

Baker Golf Cars

40 Walker St., Swansea, MA 02777
(508) 379-0092
Reps, Ray Chadwick, Bob Kinyoun

Bartlett Tree Experts

Tree Maintenance, Fertilization & Consulting
153 Rumford Ave., Newton, MA 02166
(617) 969-5990

The Bordon Company

Maynard, MA, Tel: (508) 897-2571
Sales Rep. Jack Borden
Bulk Limestone Dealer

Boston Irrigation Company

Dedham, MA
John Ramey, Paul Kenyon
(617) 461-1560
Distributor of Irrigation Supplies
and Accessories

The Cardinals, Inc.

166 River Rd., P.O. Box 520
Unionville, CT 06085
Golf Course & Landscape Supplies
John Callahan (203) 673-3699

Geoffrey S. Cornish & Brian Silva

Golf Course Architects
Fiddlers Green, Amherst, MA 01002

Country Club Enterprises, Inc.

Club Car Golf Cars, Carryalls/Utility Cars
P.O. Box 400, W. Falmouth, MA 02574
(508) 563-2284

Chester Drake & Sons, Inc.

222 Walnut St., Framingham, MA 01701
Golf Course Construction
(508) 875-7929

Elanco Products Company

Stephen C. Dollinak
31 Old Town Trail, Narragansett, RI 02882
(401) 789-9017

F.D.I., Inc. (Fairway Design & Illustration)

55 Railroad Ave., Warren, RI 02885
Custom Granite Signs & Markers
Joseph K. Martin (401) 245-7890 or 800-358-8337

Gold Star Wholesale Nursery & Sod Farm

Bill Thompson
Lexington, MA, (617) 861-1111
Canterbury, NH, (603) 783-4717

Golf Direction Associates

54 N. Grove St., Foxboro, MA 02035
Golf forms designed to meet the
industry's specialized record keeping requirements.
Nora Berard, (508) 543-9822

Hammond & Tilton, Inc.

P.O. Box 30, Exit 35W off I95
Fairfield, ME 04937
Tel: (207) 453-7131
John Deere Golf & Turf Equipment
Contact: Gary Hammond

The Charles C. Hart Seed Co.

P.O. Box 9169, Weathersfield, CT 06109
1-800-326-HART
Roy Sibley, (203) 376-9525
Don Whinnem, (603) 692-5097
Dick Gurski (413) 543-2777

Hunt and Hulteen, Inc.

Custom fertilizer applications, shade tree spraying & pruning,
irrigation, landscape design & construction
Bob Mann - 1-800-696-3363 (in MA); 508-580-1062

International Golf Const. Co.

Antonios Paganis, Rep.
5 Purcell Rd., Arlington, MA 02174
Golf Course Construction
(617) 648-2351 or (508) 428-3022

Irrigation Maintenance & Service

21 Lakeview Ave., Natick, MA, (508) 653-0625
Irrigation consultation, design, and
system evaluation - Bob Healey, ASIC

Tom Irwin, Inc.

11B A St., Burlington, MA
800-582-5959
Jack Petersen (508) 256-6296 - Wayne Ripley (508) 252-6507
Dennis Friel (617) 938-1751 - Paul Skafas (603) 889-7177
Chris Petersen (617) 262-7586

Isolite

P. O. Box 1082, Scarborough, ME 04070
(207) 883-5799
Bob Brennan - Bruce Budrow - Mark Secore

John's Tree & Landscape Company

Tree & Landscape Experts
All employees certified & insured
John P. Re, 617-739-7760

Larchmont Eng. & Irrig. Co.

Larchmont Lane, Lexington, MA 02173
(617) 862-2550

The Lawn Co. Inc.

P.O. 1540, Buzzards Bay, MA 02532
Tom Fair, 1-800-660-TURF
Fertilizers & Pest Controls Applied
Fairway Aeration & Slice Seeding

Lazaro's Golf Course Accessories

dba Hammond Paint & Chem. Co., Inc.
738 Main/Suite 223, Waltham, MA 02154
Joseph Lazaro, (617) 647-3361

LESCO Inc.

20005 Lake Rd., Rocky River, OH 44116
Ron Tumisk, Rep. - Mike Donahue, Rep.
800-321-5325

Loft's Seed

20 Beck Rd., Arlington, MA 02174
Victoria Wallace, Rep.

The Magovern Co., Inc.

27 Lawnacre Road
Windsor Locks, CT 06096
Tel: 800-243-7718 or (203) 623-2508
Lew Varga, Rep.

D.L. Maher Co.

Box 127, Concord St., N. Reading, MA 01864
(617) 933-3210
Water Supply Specialists
Water Wells & Pumping Equipment

Mass Natural

P. O. Box 363, Westminster, MA 01473
Tel: 508-874-0744
Manufacturers and suppliers of organic compost,
enriched topsoil, and custom planting mixes.

Miles Specialty Products

Greg Ellis, Rep. (401) 884-2071
67 Primrose Dr., E. Greenwich, RI 02818
Bayleton, Dyrene, Dyllox, Oktanol, Nemaicur

Modern Aeration Service, Inc.

62 Maple St., Boston, MA 02136
Featuring water injection aeration
Kevin Osgood, (617) 254-0925

Modern Tractor & Truck Service, Inc.

400 Pine St., Seekonk, MA 02771
Topdressing, 1/2" or 1/4" screened loam, underground
tank removal, "convault" aboveground fuel tank,
Steven S. Howitt, (508) 761-5554

R.F. Morse & Sons Inc.

W. Wareham, MA 02576
(508) 295-1553
Reps., Larry Anshewitz, Jack Cronin

Nardone Sand & Gravel Co. Inc.

37 Power Rd., Westford, MA 01886
(508) 692-8221
Specializing in Topdressing Sand

Nor-Am Chemical Co.

Wilmington, Delaware
David Sylvester, Rep.
(203) 828-8905

Partac Golf Course Top-Dressing

Kelsey Park, Great Meadows, NJ 07838
Jim Kelsey 800-247-2326, (908) 637-4191
Heat treated top-dressing, golf hole targets
turf blankets, and other specialty golf supplies.

P.I.E. Supply Co.

Dedicated to sales and service of quality
irrigation equipment. (203) 878-0658
Frank Santos, (508) 420-0755 for your
irrigation needs.

Pro-Lawn Products Inc.

24 Jonathan Rd., W. Greenwich, RI 02817
Specializing in turf & ornamental needs
Contact Mike Kroian, (401) 397-8880

Read Sand & Gravel, Inc.

171 VFW Dr., Rockland, MA 02370
Topdressing; root-zone mixes; bunker sand; 3/4 & 3/8 screened
loams; cart path mats.; mulch; drainage stone
Joe Farina, 1-800-660-2955

Riverside Kawasaki Mule Sales

2 Union Square, Somerville, MA
(617) 628-6400
Sales, service, parts - on site demos avail., all purpose mule
utility vehicles

J. P. Roberts Co.

Technical Resource Catalog
Survey-Weather-Testing-Meas. & Diag. Equip.
Barbara Piantedosi, (508) 456-6886

Safety Storage Inc.

Prefabricated pesticide storage bldgs.
gas & oil, storage cabinets
86 Sanderson Ave., Lynn, MA 01902
(617) 599-5490

Sawtelle Bros.

65 Glenn St., Lawrence, MA 01843
(508) 682-9296

Scotts Pro-Turf Div.

Allan Cumps, Regional Dir.
Rep. Scott Brown, (401) 294-3606
Rep. Richard Forni, (413) 534-8896

Shemin Nurseries, Inc.

Complete Hort. and Irrig. Supply Ctr.
Hudson, MA 01749
Ron Diramio, 1-800-274-3646

Tee and Green Sod Inc.

Bentgrass, bluegrass and blue/fescue sod
Dave Wallace, Exeter, RI 02822
(401) 789-8177/office — (401) 295-1870/home

Turf Enhancement Enterprises

Featuring Floratine Products, Precision Small Engine Co.
& Trion Lifts
Tom Fox - (508) 865-9150

Turf Products Corp.

7 Coppage Dr., Worcester, MA 01603
(508) 791-2091

Turf Specialty Inc.

15 Londonderry Rd., Londonderry, NH 03053
Turf & Ornamental Supplies
1-800-228-6656
Bob Flanagan, Kevin Lyons,
Dave Schermerhorn, John Lensing

White Turf, Inc. - Barre, MA

Irrigation contractor - Pump specialist
(508) 355-6777

Winding Brook Turf Farm, Inc.

240 Griswold Rd., Wethersfield, CT 06109
800-243-0232, Alan Anderson

Winfield Nursery

1320 Mountain Rd., West Suffield, CT 06093
Jeff Rogers (wholesale nursery trees & shrubs)

Philip Wogan

Golf Course Architecture
17 Walker Rd., Topsfield, MA 01983

Friends of the Association profiles

Modern Tractor and Truck Service, Inc.

Modern Tractor and Truck Service, Inc. was founded after WWII by returning Seabee Julius J. Howitt. Originally a site and road building contracting company, Modern evolved to its present business of excavation, screened loam and top dressing removal, screened loam and top dressing removal, screened loam and top dressing removal, screened loam and top dressing removal, and above ground tank sales.

Unlike other sand and gravel companies which have entered the top dressing business in the last few years, Modern has supplied the Rhode Island, Massachusetts, and Connecticut area golf courses with top dressing mixtures for more than 15 years. All of Modern's top dressing, unlike many competitors', are custom-mixed to requested specifications and ratio of loam and Holliston sand. The mixture is then screened directly into clean, waiting truck bodies for delivery. Although this process is more costly and time consuming for us, we believe it is a superior process and provides a more desirable product. Modern's material is not stockpiled, which results in a lesser chance of injecting stones or other foreign objects into the mixture through the loading process. Our most recent analysis by Agrisystems concluded that Modern's material is excellent for loam based greens.

We also supply 1/8" and 1/2" screened loam, excellent for tees and fairways, respectively.

In addition to our materials, the re-

moval of underground fuel storage tanks has become an environmentally important part of our customer service. We provide completed tank-related service, from initial advising and appraising, to excavation and tank removal, to sales of above-ground field storage systems.

We appreciate our relationship with the golf course communities in Massachusetts, Rhode Island, and Connecticut, and value the opportunity to be of service. We work hard to please each and every one of you, and hope that you will consider Modern Tractor and Truck Service, (508) 761-5554, for all your golf course needs. Please call Steve [redacted] President. We look forward to working with you.

Hunt and Hulteen, Inc.

Hunt and Hulteen, Inc. is proud to be a sponsor of the Golf Course Superintendents Association of New England. A company of national prominence in the commercial landscape industry, Hunt and Hulteen is pleased to be able to bring its talents and services to the golf industry.

Among the many services we provide is tree and shrub care. Our staff of Massachusetts Certified Arborists are fully equipped to provide structural pruning, cabling, and branching, tree removal, as well as our insect and disease control programs. Climbing and fine pruning of large and difficult specimens is one of our specialties. The spray rigs we utilize can

reach the tops of the highest shade trees, very important if you are trying to control defoliators such as the gypsy moth.

Our irrigation division is busily increasing its share of the golf course market, offering design, installation, and service. With our basis in commercial landscape management our turf management division has mastered the art of large scale fertilization and pest control applications. We have found that with pesticide licensure and insurance issues becoming more expensive and difficult to keep up with, the subcontracting of applications of restricted pesticides to certified applicators is becoming more popular.

The landscape design and construction division is adept at the installation of new planting, hardscapes, landscape lighting, as well as construction on the golf course itself. Clients have found our Vermeer trencher to be of particular value when installing drainage tiles. Should your clubhouse have interior plants, our interior landscape division is equipped to manage their care with specific experience handling golf course accounts.

The convenience that our clients value the most is being able to coordinate different horticultural disciplines under one roof while still being able to provide quality results. We would be happy to meet with you to discuss your needs. Contact Bob Mann at 800-696-3363 (in MA), or 508-580-1062.

FIRST CLASS

First Class Mail
U. S. Postage
PAID
Newburyport, MA
Permit No. 340

THE NEWSLETTER



Return to:
KIP TYLER, CGCS
P. O. BOX 671
PEABODY, MA 01960