



# THE NEWSLETTER

Golf Course Superintendents

Association OF NEW ENGLAND, INC.

Sponsors and administrators of the Troll-Dickinson Scholarship Fund - Awarded yearly to deserving Turf Management Students.

September 1993

## November Meeting

Monday, November 1, 1993  
Needham Country Club

Host Superintendent  
**Ron Kirkman**

9:00 a.m. Board Meeting  
10:00 a.m. Regular Meeting  
11:15 a.m. Shot Gun Start  
Buffet to follow after golf.  
Golf & Buffet - \$35.00  
Buffet Only - \$15.00

Reservations Required  
Call by October 29, 1993  
(617) 328-9479

*You must pay by check - No Cash!*  
*Checks payable to GCSANE*

Ron Kirkman has been a superintendent for 32 years at Needham, and club manager for 16 years. Ron and his wife Joan have three daughters and three grandchildren. Ron graduated from Stockbridge in 1958. Ron also was very active as a board member and newsletter chairman for many years.

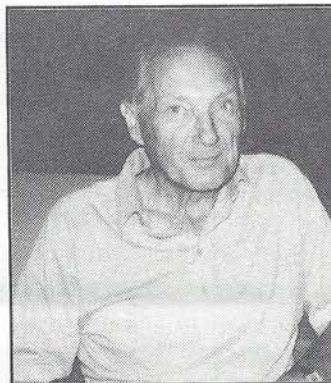
**Directions to Needham Country Club:**  
128 North - Exit 18 (Great Plain Ave.), bear left off Exit. 4th left is Green Street, 1/5 miles from 128. Club is on the right.  
128 South - Exit 18 (Great Plain Ave.), bear right off Exit. 4th left is Green Street, 6 tenths of a mile from 128. Club is on the right.

## Retirement not so quiet for Arthur Washburn

It seems that even in retirement Arthur Washburn can't escape the sometimes frightening and damaging effects of Mother Nature. However, his latest encounter with the venerable old girl was all he could handle and more. More than his early days in the golf course superintendent profession when he took on the dilapidated drainage system at the Cohasset Golf Club.

This time Mother Nature meant business. Washburn, who retired in 1990 after 30 years as a superintendent, a distinguished run of service that included his last 23 seasons at Cohasset, lapsed into the perfect layback mode. He set up a dual-residence, spending New England's four lush summer months in his hometown of Hamilton and its unsettled other eight months in a retirement home he purchased in Hudson, Florida.

The first two years of the arrangement were golden. Then came March 12, 1993 and a new experience for Arthur - a devastating tidal wave. "It's the tidal wave no one seems to know about, at least up here in New England," Washburn explained before teeing off in a GCSANE golf tournament at the Concord Country Club. "While you people were being



pelted with snow, we had an amazing rush of water that lasted only a few hours. There was no warning, no time to prepare for its arrival. It was a killer. Twenty-three people in the three surrounding counties lost their lives."

The Washburn residence took a beating Arthur said it measured more than three feet of water, so the one-floor dwelling was left in near-ruin. "We lost all of our furniture and the whole thing was just one giant disaster area," he said. "Eventually, the walls just rotted out and they had to be replaced. We got some of the work finished before coming back up here in May, but there's so much to do when we return in October. In fact, we've had a longer stay up north than usual because of it."

A stroke of luck, "on my wife's side", Arthur quipped, helped the Washburns through the ordeal. Instead of having to retreat to makeshift living quarters in an emergency recovery room at a Hudson school, they stayed with Arthur's mother-in-law who lives in St. Petersburg. "So, I'll be in the construction business for several months," Arthur looked at the immediate future. "But we're very

*continued on page 2*



**PRESIDENT**

Stephen A. Chiavaroli, CGCS  
6 Birch Street, Paxton, MA 01612  
(H) 508-752-0031 • (W) 508-791-5373  
Club Affiliation - Tatnuck C.C.

**VICE PRESIDENT**

Edward L. Brearley  
189 Matfield Street, W. Bridgewater, MA 02379  
(H) 508-584-6568 • (W) 508-295-7010  
Club Affiliation - Bay Pointe C.C.

**SECRETARY**

Robert DiRico, CGCS  
326 Fuller Street, West Newton, MA 02165  
(H) 617-527-6968  
Club Affiliation - Bree Burn C.C.

**TREASURER**

Paul Jamrog  
P.O. Box 38, Belchertown, MA 01007  
(H) 413-323-9519 • (W) 413-536-4195  
Club Affiliation - The Orchards G.C.

**TRUSTEE**

John T. Hassett  
110 Montgomery Avenue, Lowell, MA 01851  
(W) 508-458-7300  
Club Affiliation - Mount Pleasant C.C.

**TRUSTEE**

Eric E. Newell, CGCS  
113 Cross Street, Hanover, MA 02339  
(H) 617-926-7207 • (W) 617-878-1950  
Club Affiliation - Rockland C.C.

**TRUSTEE**

Kevin F. Osgood  
62 Maple Street, Hyde Park, MA 02136  
(H) 617-364-4859 • (W) 617-320-1950  
Club Affiliation - Newton Comm. G.C.

**FINANCE CHAIRMAN**

Robert Ruszala  
69 Gelineas Drive, Chicopee, MA 01020  
(H) 413-592-5780 • (W) 413-256-8654  
Club Affiliation - Hickory Ridge G.C.

**GOLF CHAIRMAN**

James Fitzroy, CGCS  
357 W. Squantum Street, N. Quincy, MA 02171  
(H) 508-528-6956 • (W) 617-328-1776  
Club Affiliation - Presidents G.C.

**EDUCATIONAL CHAIRMAN**

Richard Duggan, CGCS  
93 Warren Avenue, Marlboro, MA 01752  
(H) 508-485-8894 • (W) 508-369-0879  
Club Affiliation - Concord C.C.

**NEWSLETTER CHAIRMAN**

James Reinertson  
19 Main Street, Wayland, MA 01778  
(H) 508-655-7415 • (W) 508-358-2250  
Club Affiliation - Wayland C.C.

**PAST PRESIDENT**

Paul Miller, CGCS  
1 Leicester Road, Marblehead, MA 01945  
(H) 617-631-7910 • (W) 508-369-5704  
Club Affiliation - Nashawtuc C.C.



James Reinertson  
Newsletter Editor

Paul Jamrog  
Business Manager

Gerry Finn  
Contributing Editor

Matthew Crowther  
Associate Editor

Information contained in this publication may be used freely, in whole or in part, without special permission as long as the true context is maintained. We would appreciate a credit line.

*continued from page 1*

fortunate that it wasn't worse. One of my closest Florida friends was killed during the tidal wave. That really shook me. It's the scariest thing that ever happened to me. It's not what I expected retirement to be."

However, life always has been full of the unexpected for Arthur Washburn, a mild, unassuming man who even surprised himself when he decided to take on the life of a golf course superintendent. Arthur was a 15-year-old student at Hamilton High School when he did odd jobs as a fill-in on the Myopia Hunt Club maintenance crew. However, there was no quest for advancement or further interest in the profession at the age of 19 he enlisted in the Air Force during the Korean War. "When I was discharged, I had no idea what I wanted to do with my life," Washburn revealed. "I was knocking around, not getting serious about settling into a permanent job when I ran into a friend who was planning to attend the 10-week turf school at Stockbridge."

"Then a funny thing happened. It sounded so interesting, I decided to try it, too. Lester Allen, the old super at Kernwood, was my teacher and it got to a point where I really liked the idea of becoming a superintendent, myself. Oh, the friend? He lost interest and decided to go into another line of work."

Washburn headed for strong apprenticeship when he worked under Joe Butler at the United Shoe Golf Course. He spent three years there and took on the head super duties at the nine-hole Nabnasset Lake Country Club. After a five-year stint at NLCC, he was off to Cohasset where he supervised the golf course conditioning program until his retirement in 1990.

"I think it's great," he remarked. "The job is becoming more demanding than ever and the superintendent has to be armed with many weapons to meet those demands. It's really tougher now. So many people are playing the game. Frankly, I don't know how today's super

does it."

Meanwhile, Arthur and his wife Eleanor, are looking forward to many more years of enjoyment in retirement circles, even with the task of refurbishing their Florida home still ahead.

"I'm still a happy man," Arthur offered. "I have the luxury of looking back at a past I wouldn't trade for anything, a present that inspires me and a future that's promising. Who could ask for anything more? No one within earshot, Arthur."

Cohasset was the site of another water problem. "When I got there, the drainage system was shot," Arthur told. "We used to be flooded half the time. So, that was my big project. When that one was put under control, I tackled the installation of an automatic irrigation system. Those were the major improvements to come in while I was there."

Arthur admits he's from the old maintenance school and enjoyed being part of the technological revolution that hit the profession while he was a prominent participant in it. He's all for modern methods and the educational upgrading of the golf course profession.

GERRY FINN

## Calendar

October	Pro/Superintendent
October 7	Spring Tech. Seminar Marshfield C.C.
November 1	Needham Golf Club



# The Super Speaks Out:

**This month's question:** *With the added pressure of providing premier playing conditions for touring men and ladies pros tacked onto your agenda, how did you cope with that responsibility under the burden of operating while a drought stalked New England golf courses?*



**Dave Barber, Blue Hill Country Club (LPGA Ping/Welch's Championship):** "Believe it or not, keeping on top of things in the way of giving the ladies our best playing conditions was much easier this year than

it was a year ago."

"Because of a number of feeder wells, we never have any trouble getting enough water on the course. Therefore, the long siege of rainless days and nights did nothing to hinder my maintenance program, either before the start of play or during it. Furthermore, we have a virtual wall-to-wall irrigation system, meaning that even most of our roughs were in good shape. The cosmetic effect, then, was just about perfect."

"So, the weather conditions this year were in sharp contrast to last when we had one super cloudburst that produced more than two inches of rain in an hour. That happened on the second day of play and sent my crew scurrying to keep the greens from being inundated. We had to squeegee them continuously while the ladies were playing and that kept some doing. Fortunately, we were able to keep up with the heavy shower and things ran smoothly after that."

"Actually, the LPGA makes no tough demands as far as preparation of the course is concerned. Overall, the group doesn't expect anything spectacular, but this doesn't mean I don't make every effort to bring the course to peak playing condition when the golfers arrive."

"I'm lucky in that respect, though, because the transition from regular to tournament play here is almost nonexistent. I do raise the pampering level about four months before the LPGA event begins, but his amounts to little more than refining what's already there. In fact, the course is never

closed before tournament starts. Our golfers play it Sunday and the next day it's turned over to the ladies."

"Their reaction always has been favorable, too. I guess the galleries like it also because our attendance this year was up 30 percent."

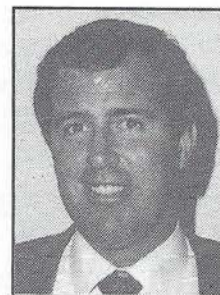
**Randy Kehres, Pleasant Valley Country Club (PGA New England Classic):**

"The drought really was a factor in my preparations for the PGA event, as was the cold, wet spring that preceded it. As a matter of fact, it seemed that there were supplemental factors involved in my maintenance program from the moment it got underway after what had been a hard winter."

"The PGA conditioning requirements usually funnel into a hope that the current tournament site is at least semi-consistent with the condition of the previous week's event. The height of the rough is expected to be consistent, as is the elimination of long rough in areas between fairways and bunkers. That last suggestion is a new change this year."

"With all this in mind, there was a whole lot of hand-watering going on at Pleasant Valley this season. I had four crew members out hand-watering every day, not only right before the tournament but every day that summer. Things turned out well, however. All the comments were favorable and the New England Classic winner, Paul Azinger, made it a point to visit me and my crew as a gesture of his approval of conditions after his victory."

"Personally, it was a stressful summer because of a combination of things but mostly the helter-skelter weather pattern. I set my program for the course to reach maximum conditioning height for the Classic and our own member-guest invitational a month later. From all indications, we were right on target. That's a relief, believe me."



**Paul Miller, Nashawtuc Country Club (Bank of Boston Senior PGA Classic):** "This was an extremely difficult conditioning experience for me. When you consider that seven holes of our course were under

water in spring and that we went from mid-May to August 1st with less than two inches of rain, you can appreciate the problems I had producing conditions the pros are accustomed to in tournament play.

"We have a single-row system of irrigation which sent all of the crew running around with hoses watering down everything in sight in order to take some of the bite out of a drought that never seemed to want to go away. I set my timing for the course to peak at Bank of Boston time. Frankly, everyone knows how to set that in motion, especially when your experience has a handle on how the course will respond to special treatment."

"However, a lot of experience and luck was needed to bring Nashawtuc up to the senior's expectations. One example was a one-inch rainfall the Sunday before the tournament. That put a perk in the roughs. Another was the decision to close nine holes for one day, July 15th, or a week before play started, and apply an insecticide to counter grub pressure. Fortunately, that did the trick."

"In the end, everything came up roses. The course was in good shape, the players' comments reflected it and another successful Bank of Boston Classic went into the books. But it was no bed of roses reaching that point. As I said, experience and luck were a winning conditioning team this year."

GERRY FINN



# Kernwood Throws "Super" Party for Robertson



*He's simply the very best.*

At least that's the impression of their golf course superintendent the membership of the Kernwood Country Club conveyed in late August when they honored Dean

Robertson, along with club manager George Karavasiles, in a gala testimonial.

Everyone was there or so it seems. Front and center were Dean and his lovely family - wife Judy; daughter Holly and her husband John Reynolds, with five-month grandson John Perry in tow; daughter Heidi and husband Bruce Dow and daughter Cheri.

Kernwood members turned out in droves, 315 strong and headed by the man who orchestrated the enjoyable evening, club president Martin (Bozie) Goldman. The affair was Bozie's idea. He wanted Robertson to know just how much Kernwood appreciated his presence and expertise, long before Dean plan to put that expertise to rest.

"It was just like a retirement party," Dean described. "Only no one retired. The turnout was really something. They tell me that on that night we were the toughest ticket in town." The thoughtful Kernwood members surrounded Robertson with some of his colleagues or those who

have made an impact on his 30-year career as a golf course superintendent.

Longtime friend and patriarchal former Golf Course Superintendents Association of New England president Leon St. Pierre, now retired, was on board; Blue Hill's Dave Barber, Robertson's college roommate at the University of Massachusetts, was on hand; Don Hearn of the Weston Country Club, whose career intertwined with Dean's at the kickoff Brandford Country Club, added to the occasion; veteran super Tony Caranci of the Ledgemont Country Club helped Dean mark the moment and Robertson's next-door neighbor Kip Tyler of the Salem Country Club completed that distinguished group of golf course groomers. Another close friend and contemporary, Ron Kirkman of Needham, was among the invitees but couldn't make the party because of a previous commitment.

Robertson, who is in his 16th year at Kernwood after stops at Brandford,

Ould Newbury and Chestnut Hill, was thrilled over the club's gracious display of recognition, respect and affection.

Adding to the festivities was the presentation of two gifts. Barber, representing the GCSANE which Robertson served as president in 1977-'78, sat down Dean in a new rocking chair. The other was a vacation trip of their choice for Dean and Judy, an expression of their feelings from the Kernwood members.

"Now you can see why I've never had a complaint about being a golf course superintendent," Dean noted. "How could I with bosses like Bozie and the rest of my Kernwood family?"

GERRY FINN



Front Row (left to right) - Andrea Marcavrelle (daughter of Leon St. Pierre), Sharron (guest of Dave Barber), Dave Barber, Joan Hearn. Back Row (left to right) - Dean Robertson, Kip Tyler, Millie & Tony Caranci, Don Hearn, Leon St. Pierre.



## 5TH ANNUAL TURF RESEARCH TOURNAMENT

Who says you need the sun to have a good time. At the 5th Annual Research Tournament held at Willowbend in Mashpee, MA. A great time was had by all despite the on again off again rain. Only a few fair weather golfers retreated to the clubhouse. I always thought Dave Barber was a die hard golfer. The field totaled out at 116 just 4 short of a full field. Willowbend is in marvelous condition and the new holes are a plus to an already fine layout. Once again I would like to thank the management and staff of Willowbend for helping to make this tournament a success. The raffle received a lot of generous support and some fine prizes. The winner of the titlest DCI irons was Frank Santos of PIE Irrigation of Connecticut. The research committee needs a big thank you for making everything possible. A special thank you to Vickie Wallace and Dr. Rich Cooper for standing in the rain on the betting hole. Owen Regan saw more of the course in one day than he'd ever imagine, thanks Owen.

### TOURNAMENT RESULTS

#### Closest To Pin

Dave Comee (10'71/2")

#### Longest Drive

Robin Hayes

#### GROSS DIVISION

##### 1st Gross

Steve Carr, Steve Molis (71)

Pocassett C.C.

Jack Hassett, Ray Costello (73)

Mt. Pleasant (Lowell)

#### NET DIVISION

##### 1st Net

Dave Comee, Don Murry

Wichendon C.C.

##### 2nd Net

Robert DiRico, Jim Burke

Brae Burn C.C.

##### 3rd Net

Kevin Osgood, Greg Day

Newton Commonwealth G.C.

##### 4th Net

John Lensing, Tim Layman

urf Specialty, Inc.

Rick Marcos, Ray Marcos

Poquoy Brook G.C.

### ROUNDS OF GOLF

Blue Hill C.C.  
Pleasant Valley C.C.

Green Harbor G.C.

Ridder G.C.

Indian Ridge C.C.

Presidents G.C.

Agawam Hunt Club

Brae Burn C.C.

Mt. Pleasant C.C.

Wollaston G.C.

Pocassett G.C.

Maple Gate C.C.

Poquoy Brook G.C.

### 1993 TEE AND GREEN SPONSORS

J.P. Roberts

Country Golf, Inc.

Nardone Sand & Gravel

New England PGA

Turf Specialty

Sawtelle Bros.

Noram Chemical, Inc.

Golf Direction Association

Charles Hart Seed Co.

A-OK Turf Equipment

D.L. Maher

Bartlett Tree

Lesco, Inc.

Turf Enhancement

Enterprise

Lofts Seed

Modern Aeration Service

Turf Products Corp.

Tom Irwin, Inc.

Scotts Pro-Turf

Agriturf, Inc.

R.F. Morse

Pro-Lawn

Mass. Golf Association

Francis Ouimet Scholarship

New England Club Managers

Lebanon Fertilizer

CIBA - GEIGY

Ransome America

Miles, Inc.

Rhone Poulenc Agri. Co.

### DONATIONS

Cutter & Buck

Titleist

Wilson

Pro-Group, Inc.

Foot Joy, Inc.

Antiqua

Tommy Armour Golf

Poquoy Brook

Lesco, Inc.

Hammon Paint &

Chemical

Susan Duquette

Danny Neves

Jack Lopez

Brad "Digger" Graber

David Woods

Jeff Dibona

Brian Page

Charlie Dickow

Ron Tumiski

Joe Lazaro

*Special thank you to Read Sand & Gravel  
Chris Read and Joe Farina*



# MEMBER / MEMBER CHAMPIONSHIP

Sept. 14, 1993  
Hatherly Country Club

## Superintendent Division

### GROSS

1st Dick French  
Greg Misopolakis - 73  
2nd Dick Duggan  
Mike Nagle - 75

### NET

1st George Brazil  
Joe Piano - 63  
\*2nd Dave Commee  
Mike Hermanson - 64  
\*3rd Dave Mucc.  
Mark Spaulding - 64

\*Match Cards

## Affiliate Division

### GROSS

1st John Lenhart  
Dick Gursky - 77

### NET

1st John Lenhart  
Dennis Friel - 59  
2nd Owen Regan  
Dick Graziano - 62

*Thanks to Rich Caughey and his staff at Hatherly  
for putting on a great day.*

## DIVOT DRIFT ...announcements...educational seminars...job opportunities...tournament results...and miscellaneous items of interest to the membership.

### MEMBERSHIP

#### Proposed New Members

Richard Crosby, Assistant, Pine Brook C.C.; Mark Doering, Affiliate, Doering Equipment Co.; Doering Equipment Co., Friend

### INFORMATION

The South Shore Country Club will be awarding a contract for Course Maintenance for 1994/'95/'96 with an option for '97/'98. Specifications are available from the Country Club Management Committee in September. RFP's are due the first part of October.

### INFORMATION

For further information contact the Country Club Management Committee.



# Please Patronize These FRIENDS OF THE ASSOCIATION

**A-OK Turf Equipment**  
8 Boulder Dr., Coventry, RI 02816  
*Buy & Sell used turf equipment.*  
Mike Cornicelli - (401) 826-2584

**AA Will Materials Corporation**  
168 Washington St.  
Stoughton, MA 020725  
*Top dressing, sand, loam, trap sand, decorative stone, landscape materials.*  
Est. 1886, 1-800-4-AAWILL

**Agirturf, Inc.**  
59 Dwight St., Hatfield, MA 01038  
*Fertilizer, seed, and chemicals for turf.*  
1-800-346-5048

**Baker Golf Cars**  
40 Walker St., Swansea, MA 02777  
(508) 379-0092  
Reps. - Ray Chadwick, Bob Kinyoun

**Bartlett Tree Experts**  
153 Rumford Ave.  
Newton, MA 02166  
*Tree Maintenance, Fertilization & Consulting*  
(617) 969-5990

**The Bordon Company**  
Maynard, MA - (508) 897-2571  
Sales Rep. - Jack Bordon  
*Bulk Limestone Dealer*

**Boston Irrigation Company**  
Dedham, MA - (617) 461-1560  
John Ramey, Paul Kenyon  
*Distributor of Irrigation Supplies and Accessories*

**The Cardinals, Inc.**  
66 River Rd., P.O. Box 520  
Unionville, CT 06085  
*Golf Course & Landscape Supplies*  
John Callahan - (203) 673-3699

**Geoffrey S. Cornish & Brian Silva**  
Golf Course Architects  
Fiddlers Green, Amherst, MA 01002

**Country Club Enterprises, Inc.**  
*Club Car Golf Cars, Carryalls/Utility Cars*  
P.O. Box 400  
West Falmouth, MA 02574  
(508) 563-2284

**Chester Drake & Sons, Inc.**  
222 Walnut St., Framingham, MA 01701  
*Golf Course Construction*  
(508) 875-7929

**Elanco Products Company**  
Stephen C. Dolinak  
31 Old Town Trail  
Narragansett, RI 02882  
(401) 789-9017

**F.D.I., Inc.**  
*(Fairway Design Illustration)*  
55 Railroad Ave., Warren, RI 02885  
*Custom Granite Signs & Markers*  
Joseph K. Martin  
(401) 245-7890 or 1-800-358-8337

**Gold Star Wholesale Nursery & Sod Farm**  
Bill Thompson  
Lexington, MA - (617) 861-1111  
Canterbury, NH - (603) 783-4717

**Golf Direction Associates**  
54 N. Grove St., Foxboro, MA 02035  
*Golf forms designed to meet the industry's specialized record keeping requirements.*  
Lora Berard - (508) 543-9822

**Hammond & Tilton, Inc.**  
P.O. Box 30, Exit 35W off I95  
Fairfield, ME 04937  
(207) 453-7131  
*John Deere Golf & Turf Equipment*  
Contact: Gary Hammond

**The Charles C. Hart Seed Co.**  
P.O. Box 9169  
Weathersfield, CT 06109  
1-800-326-HART  
Roy Sibley - (203) 376-9525  
Don Whinnem - (603) 692-5097  
Dick Gurski (413) 543-2777

**Hunt and Hulteen, Inc.**  
*Custom fertilizer applications, shade tree spraying & pruning, irrigation, landscape design & construction.*  
Bob Mann  
800-696-3363 (in MA); 508-580-1062

**International Golf Construction Co.**  
Antonios Paganis, Rep.  
5 Purcell Rd., Arlington, MA 02174  
*Golf Course Construction*  
(617) 648-2351 or (508) 428-3022

**Irrigation Maintenance & Service**  
21 Lakeview Ave., Natick, MA  
(508) 653-0625  
*Irrigation consultation, design and system evaluation.*  
Bob Healy, ASIC

**Tom Irwin, Inc.**  
11B A St., Burlington, MA  
800-582-5959  
Jack Petersen - (508) 256-6296  
Wayne Ripley - (508) 252-6507  
Dennis Friel - (617) 938-1751  
Paul Skates - (603) 889-7177  
Chris Petersen - (508) 653-8023

**Brennan Sales**  
P.O. Box 1082  
Scarborough, ME 04070  
(207) 883-5799  
Bob Brennan  
*Axis, Kel-Pak, Agroroots, Break-thru*

**John's Tree & Landscape Company**  
*Tree & Landscape Experts*  
*All employees certified & insured.*  
John P., Rep. - 617-739-7760

**Larchmont Eng. & Irrig. Co.**  
Larchmont Lane  
Lexington, MA 02173  
(617) 862-2550

**The Lawn Co., Inc.**  
P.O. 1540, Buzzards Bay, MA 02532  
Tom Fair • 1-800-660-TURF  
*Fertilizers & Pest Controls Applied*  
*Fairway Aeration & Slice Seeding*

**Lazaro's Golf Course Accessories**  
dba Hammond Paint & Chem. Co, Inc.  
738 Main/Suite 223  
Waltham, MA 02154  
Joseph Lazaro • (617) 647-3361

**LESCO, Inc.**  
20005 Lake Rd.  
Rocky River, OH 44116  
Ron Tumski, Rep. - Mike Donohue, Rep.  
800-321-5325

**Loft's Seed**  
22 Lantern Lane, Exeter, RI 02822  
Victoria Wallace, Rep.

**The Magovern Co., Inc.**  
27 Lawnacre Road  
Windsor Locks, CT 06096  
800-243-7718 or (203) 623-2508

**D.L. Maher Co.**  
Box 127, Concord St., N. Reading 01864  
(617) 933-3210  
*Water Supply Specialists*  
*Water Wells & Pumping Equipment*

**Mass Natural**  
P.O. Box 363, Westminster, MA 01473  
(508) 874-0744  
*Manufacturers and suppliers of organic compost, enriched topsoil, and custom planting mixes.*

**Brad Herman**  
**Miles Specialty Products**  
1516 Capella South  
Goat Island  
Newport, RI 02840  
(401) 846-3515  
*Baletown, Dyrene, Dylox, Oftanol, Namacur*

**Modern Aeration Service, Inc.**  
62 Maple St., Boston, MA 02136  
*Featuring water injection aeration.*  
Kevin Osgood - (617) 630-1950

**Modern Tractor & Truck Service, Inc.**  
400 Pine St., Seekonk, MA 02771  
*Holliston sand/loam topdressing mixture, 1/2" or 1/8" screened loam, underground tank removal, "convault" aboveground fuel tank.*  
Steven S. Howitt - (508) 761-5554

**R.F. Morse & Sons, Inc.**  
W. Wareham, MA 02576  
(508) 295-1553  
Reps. - Larry Anshewitz, Jack Cronin

**Nardone Sand & Gravel Co., Inc.**  
37 Power Rd. Westford, MA 01886  
(508) 692-8221  
*Specializing in Topdressing Sand*

**Nor-Am Chemical Co.**  
Wilmington, Delaware  
David Sylvester, Rep.  
(203) 828-8905

**Partac Golf Course Top-Dressing**  
Kelsey Part, Great Meadows, NJ 07838  
Jim Kelsey - 800-247-2326, (908) 637-4191  
*Heat treated top-dressing, golf hole targets, turf blankets, and other specialty golf supplies.*

**P.I.E. Supply Co.**  
*Dedicated to sales and service of quality irrigation equipment.* (203) 878-0658  
Frank Santos - (508) 420-0755  
*for your irrigation needs.*

**Pro-Lawn Products, Inc.**  
24 Johnathan Rd, W. Greenwich, RI 02817  
*Specializing in turf & ornamental needs.*  
Contact Mike Kroian - (401) 397-8880

**Read Sand & Gravel, Inc.**  
171 VFW Dr., Rockland, MA 02370  
*Topdressing; root-zone mixes; bunker sand; 3/4 & 3/8 screened loams, cart path mats.; mulch; drainage stone.*  
Joe Farina - 1-800-660-2955

**Riverside Kawasaki Mule Sales**  
2 Union Square, Somerville, MA  
(617) 628-6400  
*Sales, service, parts - on site demos avail., all purpose mule utility vehicles.*

**J.P. Roberts Co.**  
*Technical Resource Catalog*  
*Survey-Weather-Testing-Meas. & Diag. Equipment.*  
Barbara Piantedosi - (508) 456-6886

**Safety Storage, Inc.**  
*Prefabricated pesticide storage bldgs., gas & oil, storage cabinets.*  
86 Sanderson Ave., Lynn, MA 01902  
(617) 599-5490

**Sawtell Bros.**  
65 Glenn St., Lawrence, MA 01843  
(508) 682-9296

**Scotta Pro-Turf Div.**  
Allan Cumps, Regional Director  
Rep. Scott Brown - (401) 294-3606  
Rep. Richard Forni - (401) 534-8896

**Shemin Nurseries, Inc.**  
*Complete Hort. and Irrig. Supply Center.*  
Hudson, MA 01749  
Ron Diramio - 1-800-274-3646

**Sports Club Management**  
104 Wyman Rd., Braintree, MA 02184  
Ron Smith  
*(Hazard and right to know compliance implementation).*

**Sullivan Tire Co.**  
*Goodyear Specialty Tires & Tubes*  
MA: 800-464-1144 • 508-580-2222  
N.E.: 800-321-0042  
Tom Wilson, Rep.

**Tee and Green Sod, Inc.**  
*Bentgrass, bluegrass and blue/fescue sod.*  
Dave Wallace, Exeter, RI 02822  
(401) 789-8177 (office)  
(401) 295-1870 (home)

**Tuckahoe Turf Farms, Inc.**  
Richmond, RI  
Chris Beasley, Rep.  
1-800-556-5985

**Turf Enhancement Enterprises**  
*Featuring Floratine Products, Precision Small Engine Co. & Trion Lifts.*  
Tom Fox - (508) 865-9150

**Turf Products Corp.**  
7 Coppage Dr., Worcester, MA 01603  
(508) 791-2091

**Turf Specialty, Inc.**  
15 Londonderry Rd.  
Londonderry, NH 03053  
*Turf & Ornamental Supplies.*  
1-800-228-6656  
Bob Flanagan, Kevin Lyons,  
Dave Schermerhorn, John Lensing

**White Turf, Inc. - Barre, MA**  
*Irrigation contractor, Pump specialist.*  
(508) 355-6777

**Winding Brook Turf Farm, Inc.**  
240 Griswold Rd. Wethersfield, CT 06109  
800-243-0232, Alan Anderson

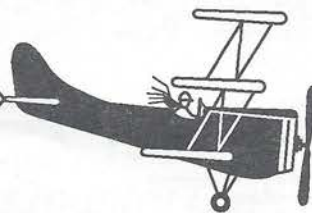
**Winfield Nursery**  
1320 Mountain Rd., Suffield, CT 06109  
Jeff Rogers  
*(wholesale nursery trees & shrubs)*

**Phillip Wogan**  
*Golf Course Architecture*  
17 Walker Rd., Topsfield, MA 01983

**Varney Bros. Sand, Gravel & Concrete**  
*Concrete Golf Cart Paths*  
Bellingham, MA  
1-800-441-7373  
Kenneth Mooradian, Rep.



# NEWS RELEASE



## New GCSAA members to receive complimentary conference registration.

*Lawrence, Kan., Aug. 27, 1993*

The board of directors of the Golf Course Superintendents Association of America (GCSAA) has announced a plan to offer new GCSAA members complimentary conference registration during their first year membership.

"This complimentary registration program allows current members and affiliated chapters a very easy way to promote GCSAA membership," said GCSAA President Randy Nichols, CGCS. "What better way to promote membership and association programs than through our conference and show?"

The complimentary registration program is available only to first-time GCSAA members. Prospective members have until December 31, 1993, to sign up for GCSAA membership and receive one complimentary registration. Reinstated members are not eligible for the complimentary offer. The program is good only for GCSAA's

International Golf Course Conference and Show.

GCSAA's 1994 International Golf Course Conference and Show will be held Jan. 31 - Feb. 7 in Dallas. For further details, contact GCSAA's membership department, (913) 832-4480.

### 1st Annual GCSANE Memorial Golf Tourn.

Tuesday, August 24th  
Wachusett Country Club

#### GROSS

1st Steve Martin  
Ray Costello  
2nd Dave Farina  
Bill Phant.

#### NET

1st Greg Misodoulakas  
R. Alley  
2nd: 6th Net - 5 teams tied

Long Drive - Jeff Mucciarone  
Closest to Pin - Gary Luccinne



## THE NEWSLETTER

**James Reinertson**

96 Main Street  
Wayland, MA 01778

FIRST CLASS  
U.S. POSTAGE  
**PAID**  
PERMIT NO. 365  
FRAMINGHAM, MA