



THE NEWSLETTER

Golf Course Superintendents

Association OF NEW ENGLAND, INC.

Sponsors and administrators of the Troll-Dickinson Scholarship Fund — Awarded yearly to deserving Turf Management Students.

October 1994

Doug Preston is first super to win Mass. Amateur Golf Championship

**MARK
YOUR
CALENDAR
!!!**



**66th
International
Golf Course
Conference & Show
Feb. 20-27, 1995**

Records were made to be broken, even when those records could be more speculative than confirmed.

Doug Preston found himself involved in two landmark possibilities this summer after taking out Oak Hill clubmate Jim Ruschioni, 1 up, in the finals of the 86th Massachusetts State Amateur Golf Championship at the Charles River Country Club.

It is believed (ah, that word brings speculation into the picture) that not only is Preston the first player to capture the title in his first bid at match play, but the first member of the Golf Course Superintendents Association of New England to achieve that feat.

"It doesn't really matter. I mean, the first to do this or that," the 33-year-old Bedfordshire Golf Club super said. "What's important is that I got the job done when no one expected me to do it."

However, life and its eventualities has been a series of unplanned developments for Preston whose first priority is maintaining the six-green, nine-hole Bedfordshire layout as part of a contract undertaken by D.P. Turf and Irrigation Inc.—a company he operates with brother Derek out of Westford.

Bedfordshire is a private course, set up for the exclusive pleasure of the residents of a 56-unit on-site condominium community. The layout has an MGA rating, conducts tournaments through its live-in events committee and stages an annual club championship competition to culminate the season.

"Oh, I have people I have to answer to," Doug informed. "We're under contract to

do all the landscape maintenance as well as grooming the golf course and have to be on our toes because it's a bid arrangement. I think the situation is working, too, because we just won the bid to do the job next year. My immediate boss is a woman, Pat Carney, who works for Mor Management. She's been great to work with. The whole thing is a success, a good deal for both sides."

Preston's involvement in golf as a player is unique since he skipped the usual "put a golf club in their hands before a formula bottle" chain of events that leads to such quality results as a state amateur championship.

"Outside of hitting a few balls on a driving range, I never got interested in golf until I was 23," Doug offered. "I always was into other sports, especially hockey. I even played at the University of New Hampshire before transferring to Lowell (Marketing degree). Golf actually became

continued on page 2

"It doesn't really matter, I mean the first to do this or that. What's important is that I got the job done when no one expected me to do it."

***Doug Preston
Bedfordshire G.C.***

**PRESIDENT**

Edward L. Brearley
189 Mattfield Street, West Bridgewater, MA 02379
508-584-6568

VICE PRESIDENT

Robert DiRico, CGCS*
326 Fuller Street, West Newton, MA 02166
617-527-6968
Brae Burn Country Club

SECRETARY

Kevin F. Osgood
62 Maple Street, Hyde Park, MA 02136
617-630-1950
Newton Commonwealth Golf Course

TREASURER

Robert Ruzsala
69 Gelinias Drive, Chicopee, MA 01020
413-256-8654
Hickory Ridge Country Club

TRUSTEE

John T. Hassett
110 Montgomery Avenue, Lowell, MA 01851
508-458-7300
Mount Pleasant Golf Course

TRUSTEE

Scott Reynolds
62 Maple Street, Hyde Park, MA 02136
617-244-7741
Charles River Country Club

TRUSTEE

James Fitzroy, CGCS*
357 W. Squantum St., North Quincy, MA 02171
617-328-1776
Presidents Golf Course

FINANCE CHAIRMAN

Paul Jamrog
500 Veterans Memorial Parkway
East Providence, RI 02914
401-438-7285
Metacomet Country Club

GOLF CHAIRMAN

Michael J. Hermanson
P.O. Box 145, Gardner, MA 01440
508-632-2713
Gardner Municipal Golf Course

EDUCATION CHAIRMAN

Richard Duggan, CGCS*
93 Warren Avenue, Marlboro, MA 01752
508-369-0879
Concord Country Club

NEWSLETTER CHAIRMAN

Michael Nagle, CGCS*
51 Lincoln Avenue, Holden, MA 01520
508-853-6574
Worcester Country Club

PAST PRESIDENT

Stephen A. Chiavaroli, CGCS*
6 Birch Street, Paxton, MA 01612
508-752-0031
Tatnuck Country Club



Newsletter Editor . . . Michael F. Nagle, CGCS
Associate Editor . . . Stephen Chiavaroli, CGCS
Contributing Editor . . . Gerry Finn
Business Manager Robert Ruzsala

Information contained in this publication may be used freely, in whole or in part, without special permission as long as the true context is maintained. We would appreciate a credit line.

continued from page 1

an after-college form of exercise and recreation for me. My father John got me started. He was always serious about the game. He carries a four-handicap at Oak Hill. My mother's also gung-ho about golf. She (Sherrie) has a 13-handicap. So, needless to say, they were whipping me pretty easily early on."

That late start in golf came in 1984, and for quite a while Doug was content to shoot in the 90s while holding fast to an 18 handicap. But then he put on his game face.

By 1988 he was down to a seven and thinking maybe he was ready for competition away from his two home clubs—Oak Hill and Nabnasset Lake. The following year he played in the State Open, followed by successive short and unsuccessful non-qualifying stints in the State Am through 1993.

Although he made it to match play for the first time this year, it wasn't until after a terrifying ordeal in a five-way playoff for the tournament's last three match play berths. That made him a longshot to survive, but Doug kept coming up with heroics that pushed him past more experienced and heralded players into the final against Ruschioni.

That once was a battle to the end, too, when Doug saw an early three-up lead evaporate and plunge him into a death struggle with his friendly rival at Charles River's 18th hole (36th in the match), a 435-yard dogleg killer where he put his three-iron approach 17 feet from the pin and calmly two-putted for the championship.

Surprise. Surprise. To everyone but Doug that is. Seems that the longshot had done some heavy preparation for just such a moment as a sweat-filled confrontation on the match's last hole.

"Oh, yeah," he told. "I spent three months (January to March) working on a course in South Carolina. It's called the Golf Professional Club and it was full of pros trying to get into my pocket when I played. So, it was a matter of self defense. I worked hard for my money down there (maintenance crew), and I worked harder keeping it playing those guys. I really think that made the difference when I got to the State Am."

Now, with that fantastic accomplishment behind him, Preston has been taunted by thoughts of perhaps concentrating on the playing end of the game...taunted but not conquered.

"I'm a late-bloomer all right," Doug remarked. "But I'm also a realist. I have no aspirations or the wherewithal to become a playing pro. I'm also 33 years old and looking ahead to things like my future in

"Outside of hitting a few balls on a driving range, I never got interested in golf until I was 23. Golf actually became an after-college form of exercise and recreation for me."

**Doug Preston
Bedfordshire G.C.**

life. Right now my long range goal is to own a golf course. That would fit all my professional interests...marketing, maintenance, and respect for how the game should be played and administered."

Meanwhile, Doug is deep into his superintendent's involvement. He was scheduled to represent the GCSANE in the Jimmy Fund Tournament at Nashawtuc and looks forward to other appearances in the name of the profession. That makes him super on two counts—getting the most out of his talents to groom a golf course and hit a ball. That's quite a daily double.

GERRY FINN

Calendar

- | | |
|------------|---|
| Oct. 3 | Jimmy Fund Tournament
(to benefit cancer research)
Nashawtuc C.C., Concord, Mass. |
| Oct. 10 | The Tom Schofield Memorial Tournament
Wellesley C.C., Wellesley, Mass. |
| Oct. 17 | NEPGA Pro-Supt. Tournament
Spring Valley C.C., Sharon, Mass. |
| Nov. 3 | GCSAA Regional Seminar
<i>Drainage Systems</i>
Marriott Hotel, Providence, R.I. |
| Nov. 4 | GCSAA Regional Seminar
<i>Irrigation Scheduling Techniques</i>
Marriott Hotel, Providence, R.I. |
| Nov. 7 | GCSANE Monthly Meeting
Mount Pleasant G.C., Lowell, Mass. |
| Dec. 7 & 8 | GCSAA Regional Seminar
<i>Golf Course Construction & Techniques</i>
The International, Bolton, Mass. |
| Feb. 20-27 | GCSAA 66th International Golf Course Conference & Show
Moscone Center, San Francisco, Cal. |

The Super Speaks Out:

This month's question: How do you manage golf cart traffic? Do you have a definitive traffic pattern, and what are the results of this effort?

Bruce Packard, Stockbridge Golf Club: "Golf carts always have been one of those parts of my life as a super that turn up more as an annoyance than a problem.

"If you want to talk problems, try me on water. But that's another story, one that begins when we're fighting the tides to get the course playable at least sometime in early May.

"The carts, on the other hand, wind up as an afterthought since many of our members prefer to walk. Stockbridge is a flat course with a river running through and around it and four bridges to tackle whether you're on foot or riding the fairways and roughs.

"However, just because we have a short season with only 15-or-20,000 rounds played a year doesn't mean we have to ignore the way golf carts are driven. Even with a minimum amount of traffic, golf carts create more harm than good.

"Strangely, I've discovered that the more rules and regulations we have for driving carts, the more damage we get.

"For example, when we set up signs that confine carts to the rough, we find that we wind up with worn-down turf between the fairways and the roughs. And that steady beat down of the grass often is fatal to those particular areas.

"Consequently, I'm inclined to let our cart users free-wheel in the fairways and roughs just as long as they keep their vehicles within safe distance of greens and tees. I think that most of our members are aware that greens and tees are to be pampered, so they respect an off-limits approach there in regard to driving the proximities of those areas.

"But, remember, I'm talking about a 'fleet' of 20 carts. If play should continue to increase and those 20 carts become 60 or 70, I would want a definite cart path program in place. Until then and outside of controlling traffic close to greens and tees, I just let them (carts) scatter."



Steve Mann, Captain's Golf Club: "We are a municipal course and under the authority of a local golf commission. Therefore, they (commission members) are into the golf cart rules and regulations, using my advice as to how they should be enforced.

"First of all, let me say that my department has nothing to do with the golf carts in regard to renting and maintaining them, even in the small repair department. The only thing we do is attempt to set up a traffic pattern for them and tow any when they break down. However, an escrow account from some of the cart profit is targeted for course upkeep.

"Our restricted areas are defined by arrows and lines . . . however, I make it a practice to alternate those line markers to avoid constant wear."

**Steve Mann
Captain's Golf Club**

"As for the specific traffic pattern, we follow the usual in-the-rough concentration and 90-degree cross-the-fairway standards. We have some golf paths, but extending them full bore is a slow process.

"Our restricted areas are defined by arrows and lines, about 30 or 40 yards of them in each affected area. However, I make it a practice to alternate those line markers to avoid constant wear, creating a cart path strung across the fairway.

"The results of our efforts have been pretty good overall; but, just like most courses, we get our share of joy riders. They are hard to control, especially on a municipal course.

"One saving gesture in regard to overloading the course with carts is that players are not required to rent them as is the case at some resort areas. This is a big

help since there are times (outings of 60 players or more) when carts are mandatory.

"In the final analysis, the golf cart dilemma remains the same. They have to be tolerated because they are a recognized source of revenue. We just have to keep educating golfers about the dangers of hard and reckless driving, that in the end it's their playground they're hurting."

Tony Caranci, Ledgemont Country Club: "Let's face it. In a perfect superintendent's world, there would be no golf carts. But, as they say, nothing's perfect and the superintendent has learned to live with the golf cart.

"We have strict, no-fairway riding rules on several of our holes—like the water holes at two, eight, 11, and 13. And we hold to it. I feel sorry for some of our older members who are inconvenienced by the no-fairway restriction, but we do allow for exceptions in extreme physical condition cases.

"The rest of the traffic pattern is a familiar one. We use lines, blocks, everything around the greens to keep the carts from roaming those areas. Those lines and arrows are a good reminder to drivers to stay clear of greens and tees and for the most part they show good sense.

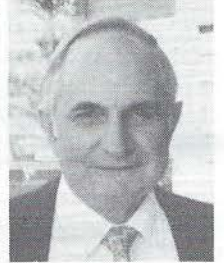
"My golf cart responsibility here is an expansive one since I maintain and also buy the carts for the club. Which means I'm responsible for the purchase and upkeep of a fleet of 65 vehicles. I accept it because golf carts have become an integral part of the game much to the chagrin of the superintendent.

"Once upon a time profits from carts went into course maintenance and projects for improving the course. However, the trend these days is to direct the profits into a general fund. Regardless, we have to realize carts have helped revolutionize and popularize golf. If we could, we supers would keep golf carts off the course. However, that's not possible or, unfortunately, practical."

GERRY FINN

"In a perfect world, there would be no golf carts."

**Tony Caranci
Ledgemont Country Club**



GCSANE Memorial Golf Tournament supports Scholarship & Benevolence Fund

Event raises \$8,135 for newly formed fund; total is now over \$27,000

Our 2nd Annual Memorial Event was conducted at the Wachusett Country Club in West Boylston on August 16. The event again served as our association's fund raiser for our newly formed Scholarship & Benevolence Fund. We were able to raise a total of \$8,135 during the month of August, bringing the total worth of the Fund to over \$27,000.

On behalf of the Board of Directors of GCSANE, Jack Hassett and I would like to acknowledge the following individuals and businesses for their support this summer.

First of all, Wachusett County Club's owner and superintendent Don Marrone deserves our warmest thanks. For the second consecutive year, Don gave us his golf course, golf carts, and the wonderful meal and hospitality, all on the house. Our fund is virtually thousands of dollars richer due to the generosity of Don, and our association will be indebted to him for a long time to come. Thanks again, Don.

We would like to thank all the individuals who registered to play golf at our Memorial event. Ninety-six of the 98 registrants (68 members and 30 guests) made it to Wachusett, where we all found the weather and the golf course to be perfect.

Thanks to the following for their donations to the fund, totaling \$900: Don Hearn, Orrin Ellis, Sawtelle Brothers, Jeff Rogers, Earthworks (Pat Lucas), Richard McHugh, Agri-Turf, J.P. Roberts Co., Doering Equipment, Kip Tyler, Ron Milenski,

For the second consecutive year, Don Marrone, Wachusett Country Club owner and superintendent, gave us his golf course, golf carts, and the wonderful meal and hospitality . . . all on the house.

Bob and Barbara Piantedosi, Dean Robertson, Country Club of Stow, and Roy MacIntosh.

Thanks to the following companies that were represented by players at Wachusett: Country Club Enterprises, Varney Bros., R.F. Morse Co., O.M. Scotts, Turf Specialty, Nardone Sand & Gravel, Irrigation Management & Services, Turf Enhancement Enterprises, Turf Products Corp., Doering Equipment Co., Wellesley College, A-OK Equipment Sales, F.D.I. Inc., Lesco, Inc., Charles C. Hart Seed Co., Sports Club Management, Pro-Lawn Products, Inc., Tom Irwin Inc., and Tee & Green Sod Inc.

Thanks to: Turf Specialty for again providing the players with coffee and danish and on-course refreshments; Joe Martin of F.D.I. Inc. for his donation of a Memorial Tournament Banner which can be used at

each year's event; and Chris Peterson of Tom Irwin Inc. and Dick Gurski of the Hart Seed Company for donating their raffle winnings back to our Scholarship Fund.

Thanks to Charlie Dickow for not only sending two players to Wachusett, but for also donating a round of golf and carts for a foursome at Poquoy Brook Golf Club. Incidentally, next year's Memorial Tournament will be hosted by Charlie at Poquoy Brook in Lakeville.

Lastly, for any member who may have overlooked a contribution to the fund, please feel free to send any donations to either Jack Hassett or myself any time this fall.

**STEPHEN CHIAVAROLI
JACK HASSETT
Tournament Co-Chairmen**

A message from the President

Since the beginning of this organization, the people selected to guide and make the decisions for our association have always planned for the future and the needs of its membership.

The Scholarship and Benevolence Fund was created with every member in mind. It will provide scholarships to members of the association's immediate family and assist members in times of need.

In order for the Scholarship and Benevolence Fund to be a true success, the entire membership needs to become actively involved. The 2nd Annual Tournament at Wachusett Country Club was a perfect opportunity to show support for this endeavor, but instead a mere 40% of the members chose to contribute either through donations or playing in the tour-



nament. In order to reach the goal set by the committee, this percentage has to grow.

I want to thank Don Marrone Jr. for donating the proceeds from the tournament to the S&B Fund. Also, thanks to all the members and guests who participated. The golf course was in excellent condition and many guests remarked what a great day they had. Thank you!

CHIP BREARLY

In order for the Scholarship & Benevolence Fund to be a true success, the entire membership needs to become actively involved.

The tournament was a perfect opportunity to show support for this endeavor, but instead a mere 40% of the members chose to contribute . . .

**Chip Brearly
President, GCSANE**

Integrated Pest Management Conference set for Oct. 13 in Marlborough, Mass.

Focus to be on turf, landscape, ornamental, and pest control industries

The first Urban/Suburban Integrated Pest Management conference in New England for companies, educational institution personnel, and governmental and private agencies interested in IPM will be held on October 13 at the Royal Plaza Motel, Marlboro, Mass.

The focus of this conference is on what has been developed and what is working in integrated pest management practices in the turf, landscape, ornamental, and structural pest control industries. Presentations will be made by national experts in the above areas who use IPM methods. In addition, this conference will provide a forum for personnel from all the aforementioned agencies to discuss matters of mutual concern surrounding the practice of pest control and integrated pest management.

The conference is sponsored by the New England regional office of the Environmental Protection Agency. Conference co-sponsors include the University of Massachusetts Cooperative Extension System, the Massachusetts Department of Food and Agriculture, and the Biotechnology Center of Excellence. These agencies are all interesting in facilitating information exchange among pest control concerns as well as learning from those companies and agencies which are on the leading edge of IPM techniques.

For registration information, contact: Allan Christensen, EPA Region 1, JFK Federal Building, Boston, MA 02203-2211, (617) 565-4968; Kathleen Carroll, University of Massachusetts Cooperative Extension, French Hall, Box 32910, Amherst, MA 01003-2910, (413) 545-0895; or Mary Owen, Cooperative Extension System, 5 Irving Street, Worcester, MA 01609-03209, (508) 892-0382.

This conference will also be a forum for personnel from companies, educational institutions, and government & private agencies to discuss the practice of pest control and integrated pest management.

Club Car, Inc., longtime GCSAA partner, makes important donation to S & R Foundation

\$5,000 donation goes to educational & scientific advancement

In a generous show of support to the golf course management industry and the Golf Course Superintendents Association of America (GCSAA), Club Car, Inc. has donated \$5,000 to GCSAA's Scholarship & Research (S&R) Foundation.

GCSAA President Joseph G. Baidy, CGCS said, "Club Car has always been supportive of GCSAA and its membership. Their gift shows that they are willing to continue taking a leadership role by investing in the future of this industry."

With the gift, Club Car becomes the newest member of the GCSAA Platinum Tee Club, an exclusive group of companies, golf clubs, and golf associations that contribute \$5,000 or more annually to help fund GCSAA S&R's operations. Last year, GCSAA Platinum Tee Club members con-

tributed more than \$200,000 in support of GCSAA S&R's student financial aid programs, health research efforts, endowments, and grants to other organizations.

Club Car's Director of Marketing, Michael Alexander, said, "We believe this contribution is an important way of showing support for our customers and friends in the golf industry. GCSAA Scholarship & Research funds programs that are very

beneficial to our industry and Club Car is proud to help out."

Club Car specializes in the manufacture of golf, utility, and transportation vehicles for the golf course, grounds maintenance, industrial, academic, and commercial markets.

GCSAA S&R is a 38-year-old foundation dedicated to providing educational and scientific advancement for the golf course industry.

"We believe this contribution is an important way of showing support for our customers and friends in the golf industry. GCSAA Scholarship & Research funds programs that are very beneficial to our industry and Club Car is proud to help out."

***Michael Alexander
Director of Marketing, Club Car, Inc.***

Toro signs on as exclusive partner with GCSAA for association's annual golf championship

The Golf Course Superintendents Association of America (GCSAA) announced that The Toro Company has signed a long-term agreement to be the exclusive partner for the annual GCSAA Golf Championship. GCSAA President Joseph G. Baidy, CGCS made the announcement.

"GCSAA is very excited about this new partnership with Toro," Baidy said. "Toro's outstanding commitment to the industry and our association is very much appreciated by the GCSAA membership."

John Szafranski, vice president and general manager of The Toro Company's commercial products division, said, "We are elated about this opportunity to partner with GCSAA and share in this extraordinary experience. We are committed to the golf course management industry and are pleased to show our support by co-hosting a first-class golf championship with GCSAA."

Toro's commitment will be realized through many new enhancements to the GCSAA members-only tournament. Toro's support will enable GCSAA to offer more



value to participants—complimentary receptions, continental breakfasts, Victory Banquet, new and different tee prizes, plus a hole-in-one contest—are just a few of the added features.

In addition, remaining funds donated by Toro which are not applied to the expense of hosting the event will be given as a contribution to GCSAA's Scholarship & Research Foundation.

The 1995 GCSAA Golf Championship is scheduled for February 20-21 in Monterey, California. Five courses in the Monterey Peninsula will host the tournament: The

Bayonet at Fort Ord Golf Course, The Golf Club at Quail Lodge, Old Del Monte Golf Course, Poppy Hills Golf Course, and Rancho Canada Golf Club, West Course.

The 1995 championship will be the 45th in the association's history. The tournament will precede GCSAA's 66th International Golf Course Conference and Show scheduled for February 20-27 in San Francisco.

The Toro Company is the leading provider of outdoor turf maintenance and beautification products for home, recreation, and commercial applications.

Since 1926, GCSAA has been the leading professional association for the men and women who manage and maintain golf facilities in the United States and worldwide. From its headquarters in Lawrence, Kansas, the association provides education, information, and representation to more than 13,700 individual members from more than 50 countries. GCSAA's mission is to serve its members, advance their professions, and enrich the quality of golf and its environment.

DIVOT DRIFT...announcements...educational seminars...job opportunities ...tournament results...and miscellaneous items of interest to the membership.

MEMBERSHIP

Proposed for Membership: Zip Type Service, Friend of Association, Newburyport, Mass.; William Yanakakis, Associate, New Meadows G.C., Topsfield, Mass.

Welcome New Members: Scott A. Merrill, Associate, Wayland C.C.; Glen Grafton, Assistant, Ponkapoag G.C.; and Edward J. Gianni, Assistant, Cedar Hill G.C.

INFORMATION

Congratulations to Dave Barber, CGCS, formerly of Blue Hill C.C., on being named the new Golf Course Superintendent at Wellesley C.C.

Congratulations to Wayne and Julie LaCroix on the birth of their son. Tyler Dodge LaCroix was born on September 12 and weighed in at 8 lbs. 12 oz.

Joseph Moran, a former Affiliate Member who worked for Hart and Loft's Seed companies, passed away recently at the age of 81. Our condolences go out to his family.

Any member interested in hosting a winter meeting, contact Dick Duggan at 508-369-0879.

JOB OPPORTUNITIES

Golf Course Superintendent at Dedham Country and Polo Club. Send resume to: Chairperson, Green & Grounds Committee, Dedham Country & Polo Club, P.O. Box 430, Dedham, MA 02027-0430.

Golf Course Superintendent at North Conway Country Club. Send resume to: North Conway Country Club, Attn. Chuck Kyle, P.O. Box 555, North Conway, NH 03860-0555.

Golf Course Superintendent at Framingham Country Club. Send Resume to: Board of Governors, Attn. Paul Prior, P.O. Box 2284, Framingham, MA 01701.

Equipment Mechanic at Ipswich Country Club. Two-to-three years experience; must have own tools. Salary negotiable. Apply to: Tom Grover, G.C. Supt., 148 Country Club Way, Ipswich, MA 01938.

Asst. Superintendent at Colonial C.C. Two-year turf degree or winter school certificate required. Also must have Mass. Pesticide Applicators license. Irrigation experience a plus. Apply to: Thomas Plett, G.C. Supt., Colonial C.C., Route 195 and 128, Audubon Road, Wakefield, MA 01880.

MEETING NOTES

A big "Thank You" to Roy MacIntosh and all of the folks at Twin Hills for a great day and a wonderful time at our September meeting.

Please Patronize These FRIENDS OF THE ASSOCIATION

A-OK Turf Equipment

8 Boulder Dr., Coventry, RI 02816
Buy & sell used turf equipment.
Mike Cornicelli - (401) 826-2584

AA Will Materials Corporation

168 Washington St., Stoughton, MA 02072
Top dressing & bunker sand, loam, decorative stone, & landscape materials. Est. 1886.
Frank Will, Dan Graziano, Kevin LaPorte
1-800-4-AAWILL

Agirturf, Inc.

59 Dwight St., Hatfield, MA 01038
Fertilizer, seed, and chemicals for turf.
Bruce Chapman, Lew Varga
1-800-346-5048

Baker Golf Cars

40 Walker St., Swansea, MA 02777
Mark Farley, Doug Hooper
(508) 379-0092

Bartlett Tree Experts

153 Rumford Ave., Newton, MA 02166
Tree maintenance, fertilization & consulting.
(617) 969-5990

Best Bent Turf, Inc.

P. O. Box 318, Raymond, NH 03077
Alan Anderson - (603) 895-6220

The Borden Company

Maynard, MA
Bulk limestone dealer.
Jack Borden - (508) 897-2571

Boston Irrigation Company

Dedham, MA
Distributor, irrigation supplies & accessories.
John Ramey, Paul Kenyon, Robert Barbati
(617) 461-1560

Brennan Sales

P. O. Box 1082, Scarborough, ME 04070
Turf care products.
Bob Brennan - (207) 883-5799

Caldwell Environmental

5 Cross St., Acton, MA
(508) 263-4586

The Cardinals, Inc.

166 River Rd., P. O. Box 520
Unionville, CT 06085
Golf course & landscape supplies.
John Callahan - (203) 673-3699

Geoffrey S. Cornish & Brian Silva

Golf Course Architects
Fiddlers Green, Amherst, MA 01002

Country Club Enterprises, Inc.

P. O. Box 820, Cataumet, MA 02534
Club Car golf cars, caryalls, utility cars.
Jim Casey, Dave Farina, Ed Maguire
(508) 563-2284

Doering Equipment

P.O. Box N, Franklin, MA 02038
Distributor of John Deere golf & turf equipment.
Mark Doering - (508) 520-3629

Elanco Products Company

31 Old Town Trail, Narragansett, RI 02882
Stephen C. Dolinak - (401) 789-9017

F.D.I., Inc.

(Fairway Design Illustration)
55 Railroad Ave., Warren, RI 02885
Custom granite signs & markers.
Joseph K. Martin, Robert Page
(401) 245-7890 or 1-800-358-8337

Gold Star Wholesale Nursery & Sod Farm

Bill Thompson
Lexington, MA - (617) 861-1111
Canterbury, NH - (603) 783-4717

Golf Direction Associates

54 N. Grove St., Foxboro, MA 02035
Business forms, graphics, reports, resumes.
Nora Berard - (508) 543-9822
FAX (508) 698-0402

The Charles C. Hart Seed Co.

P. O. Box 9169, Weathersfield, CT 06109
Roy Sibley, Dick Gurski
1-800-326-HART

International Golf Construction Co.

5 Purcell Rd., Arlington, MA 02174
Golf course construction.
Antonios Paganis
(617) 648-2351 or (508) 428-3022

Irrigation Maintenance & Service

21 Lakeview Ave., Natick, MA
Irrigation consultation, design and system evaluation.
Bob Healy, ASIC - (508) 653-0625

Tom Irwin, Inc.

11B A St., Burlington, MA
Jack Petersen, Wayne Ripley, Dennis Friel
Paul Skafas, Chris Petersen
1-800-582-5959

Ken Jones Tire Co.

Worcester, MA
Distributor of tires for lawn & garden, trucks, cars, industrial equipment, and golf carts.
Gerry Jones - (508) 755-5255

Larchmont Eng. & Irrig. Co.

Larchmont Lane, Lexington, MA 02173
Steve Butler - (617) 862-2550

The Lawn Co., Inc.

P. O. Box 1540, Buzzards Bay, MA 02532
Fertilizers & pest controls applied;
fairway aeration & slice seeding.
Tom Fair - 1-800-660-TURF

Lazaro's Golf Course Accessories

dba Hammond Paint & Chem. Co., Inc.
738 Main St., Suite 223, Waltham, MA 02154
Joseph Lazaro - (617) 647-3361

LESCO, Inc.

20005 Lake Rd., Rocky River, OH 44116
Ron Tumiski, Mike Donohue
1-800-321-5325

Loft's Seed

22 Lantern Lane, Exeter, RI 02822
Victoria Wallace - 1-800-648-7333

D.L. Maher Co.

Box 127, Concord St., N. Reading 01864
Water supply specialists;
water wells & pumping equipment.
(617) 933-3210

Mass Natural

P. O. Box 363, Westminster, MA 01473
Manufacturers & suppliers of organic compost, enriched topsoil, custom planting mixes.
(508) 874-0744

Miles Specialty Products

1516 Capella South, Newport, RI 02840
Baylaton, Merit, Dyllox, Tempo, Nema-cur.
Brad Herman - (401) 846-3515

Modern Aeration Service, Inc.

62 Maple St., Boston, MA 02136
Featuring water injection aeration.
Kevin Osgood - (617) 630-1950

Modern Tractor & Truck Service, Inc.

400 Pine St., Seekonk, MA 02771
Holliston sand/loam topdressing mixture, 1/2" or 1/8" screened loam, underground tank removal, Convault aboveground fuel tank.
Steven S. Howitt - (508) 761-5554

R.F. Morse & Sons, Inc.

W. Wareham, MA 02576
Larry Anshewitz, Jack Cronin
(508) 295-1553

Nardone Sand & Gravel Co., Inc.

37 Power Rd., Westford, MA 01886
Specializing in topdressing sand.
Greg Frederick - (508) 692-8221

Nor-Am Chemical Co.

Wilmington, Delaware
David Sylvester - (203) 828-8905

Partac Golf Course Top-Dressing

Kelsey Part, Great Meadows, NJ 07838
Heat treated top-dressing, golf hole targets, turf blankets, and other specialty golf supplies.
Jim Kelsey, 1-800-247-2326, (908) 637-4191

P.I.E. Supply Co.

For your irrigation needs; dedicated to sales and service of quality irrigation equipment.
Frank Santos
(508) 420-0755 or (203) 878-0658

Pro-Lawn Products, Inc.

24 Johnathan Rd., W. Greenwich, RI 02817
Specializing in turf & ornamental needs.
(401) 397-8880

Read Sand & Gravel, Inc.

171 VFW Dr., Rockland, MA 02370
Topdressing; root-zone mixes; bunker sand; 3/4 & 3/8 screened loams; cart path materials; mulch; drainage stone.
Joe Farina - 1-800-660-2955

J.P. Roberts Co.

Technical resource catalog; survey-weather-testing-measurement & diagnostic equipment.
Barbara Piantedosi - (508) 456-6886

Safety Storage, Inc.

86 Sanderson Ave., Lynn, MA 01902
Prefabricated pesticide storage buildings, gas & oil, storage cabinets.
(617) 599-5490

Sani-Mate Supply, Inc.

88 Shrewsbury St., Worcester, MA
Distributor of Karcher hot high pressure equipment and bulk detergents, sales, service, and rentals.
Barry Hackett - (508) 752-8888

Sawtelle Bros.

65 Glenn St., Lawrence, MA 01843
Bob Brown, Larry Bunn, Mike Hannigan, Frank Higgins, John Lenhart, Dave Parnigiane
(508) 682-9296

Scotts Pro-Turf Div.

Allan Cumps, Regional Director
Randy Hamilton - (508) 369-5986
Richard Forni - (413) 534-8896

Sodco, Inc.

P.O. Box 2, Slocum, RI 02877
Owen Regan

Sports Club Management

104 Wyman Rd., Braintree, MA 02184
Hazzom and right-to-know compliance implementation.
Ron Smith

Sullivan Tire Co.

Goodyear specialty tires & tubes.
Tom Wilson
MA: 1-800-464-1144, (508) 580-2222
NE: 1-800-321-0042

Dahn Tibbett Professional Golf Services

20 Clark Lane, Marshfield, MA 02050

Tee and Green Sod, Inc.

Exeter, RI 02822
Bentgrass, bluegrass and blue/fescue sod.
Dave Wallace, Robin Hayes
(401) 789-8177

Tuckahoe Turf Farms, Inc.

Richmond, RI
Chris Beasley - 1-800-556-6985

Turf Enhancement Enterprises

Featuring Floratine Products, Precision Small Engine Co. & Trion Lifts.
Tom Fox - (508) 865-9150

Turf Products Corp.

7 Coppage Dr., Worcester, MA 01603
Distributors of Toro irrigation and maintenance equipment, lightning detection systems, and other golf-related products.
Tim Berge, Ed Fallow, Rick Moulton, John Winskovicz, Dick Young
(508) 791-2091

Turf Specialty, Inc.

15 Londonderry Rd., Londonderry, NH 03053
Turf & ornamental supplies.
Bob Flanagan, Kevin Lyons, Dave Schemmerhorn, John Lensing
1-800-228-6656

Varney Bros. Sand, Gravel & Concrete

Bellingham, MA
Concrete golf cart paths.
Kenneth Mooradian - 1-800-441-7373

Winding Brook Turf Farm, Inc.

240 Griswold Rd., Wethersfield, CT 06109
1-800-243-0232

Winfield Nursery

1320 Mountain Rd., Suffield, CT 06109
Wholesale nursery trees & shrubs.
Jeff Rogers

Philip Wogan

Golf Course Architecture
17 Walker Rd., Topsfield, MA 01983

Zip Type Service

50 Kent St., Newburyport, MA 01950
Design, printing, mailing, advertising specialties
Sheila Johnson - (508) 462-9358

GCSANE tournament results: Sept. 6 at Twin Hills C.C., Longmeadow, Mass.

**Monthly meeting
golf action includes
sudden-death playoff
and a hole-in-one**

**Superintendent's Division:
Member - Member**

Gross: Jack Hassett and Dick Duggan, 72. (Won in sudden death on second extra hole over Jim Fitzroy and Richard Tworig.)

First Low Net: Don Hearn and Rick Arzillo, 60

Second Low Net: Paul Jamrog and Phil DiRico, 61

**Affiliate Division:
Member - Member**

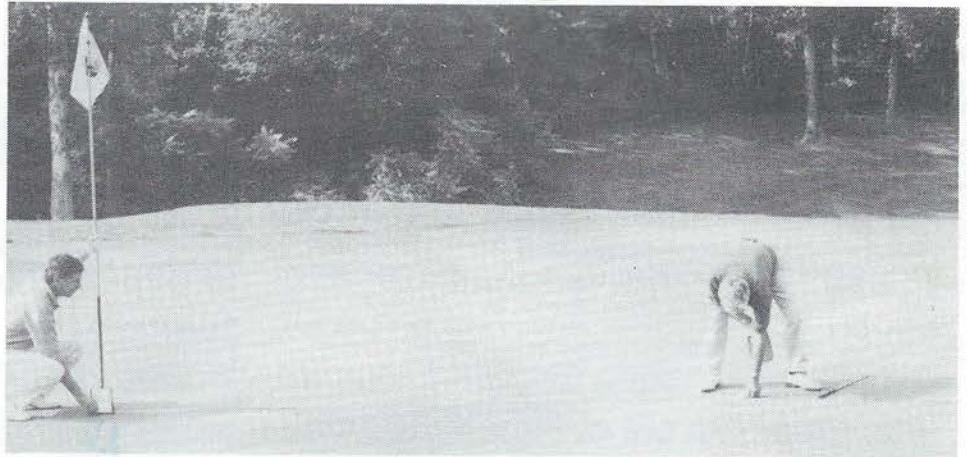
Gross: Ron Tumiski and Tom Fox, 72
First Low Net: Kevin Lyons and David Schermerhorn, 59

Second Low Net: Alan Cumps and Bob Ruzsala, 62

Nearest to the Pin: #3 - Bob Brown, 11'5-1/2"; #9 - Bob Varanka, Hole In One!; #13 - Joe Rybka, 1'4"; #18 - Paul Jamrog, 1'2"



At left, Mike Iacono takes a break from the action at Twin Hills C.C. Below, John Lenhart (left) and Art Silva (right) couldn't quite shrink the distance on this one.



MODERN AERATION SERVICE INC
62 MAPLE ST
BOSTON MA 02136-2741

Return to:
MIKE NAGLE
51 LINCOLN AVE.
HOLDEN, MA 01520

FIRST CLASS

First Class Mail
U.S. Postage
PAID
Newburyport, MA
Permit No. 61

THE NEWSLETTER

