



# THE NEWSLETTER

September 2000

of the **Golf Course Superintendents Association of New England, Inc.**

Sponsors and administrators of the Troll-Dickinson Scholarship Fund – Awarded yearly to deserving Turf Management Students.

## Dr. Gail Schumann gives up a summer of fun for the relentless pursuit of Gray Leaf Spot

These days excitement rings through Dr. Gail Schumann's voice. Is the University of Massachusetts turf pathologist, researcher, and teacher on to something? Is there a field test for the deadly ryegrass stalker – gray leaf spot – on the horizon?

"Not yet," Dr. Schumann replies. "But we're getting there. The key to gray leaf spot is early detection. I mean early, early detection because once you see it out in the open you can't really beat it. Therefore, diagnosis is the best weapon we have so far against a relatively new disease."

Dr. Schumann informs that gray leaf spot is only two years old. It is a selective attacker in that it affects only perennial ryegrass. But "affects" is an ill-advised term. In reality, gray leaf spot takes out fairways and tees in one thrust. There is no known cure for it once it takes hold. There is an even darker side to it. It thrives in warm and wet weather. At the time of this writing, it has been one of the wettest summers on record and the dog days of August were waiting in the wings.

That Dr. Schumann's concern over and input in the fight to lay gray leaf spot to rest is a major project goes without saying. The disease is believed to have formed its roots in the southern half of the United States and is moving north at an alarming clip. Her dealings with the disease include golf courses in Rhode Island, Long Island, Connecticut, and Massachusetts. That's where her search and request for turf samples are centered.

"I can't emphasize enough the importance of golf course superintendents sending us samples, even delivering them if possible," Dr. Schumann remarks. "I keep

playing this tune, that the more samples we receive the closer we will come to developing a field test superintendents can use to stop gray leaf spot almost before it starts. We can't get enough samples."

Presently, there is a team of gray leaf spot fighters working the Northeast. Dr. Schumann is in constant contact with Dr. Wakar Uddin, turf pathologist at

work. By the time we realize it's gray leaf spot, the affected area is doomed."

Dr. Schumann is so wrapped up in the gray leaf spot project she has assigned one of her research assistants, Jason Lanier, to help pick up the sampling pace. "We're into a crucial period," Dr. Schumann warns.

*continued on page 2*

*"I keep playing this tune, that the more samples we receive, the closer we will come to developing a field test superintendents can use to stop gray leaf spot almost before it starts."*

**Dr. Gail Schumann**  
**University of Massachusetts**

Pennsylvania State University. Dr. Uddin is conducting the same tests in his area. The two pathologists compare notes weekly and each believes the matter of discovering a field test is almost on the money.

"Right now there is a possible antibody test for gray leaf spot," Dr. Schumann reveals. "But it is a lab test at the moment. Valuable time is lost in the in-house process. We're feeding information to the company that makes the antibody. The trouble is that superintendents can mistake gray leaf spot for some other disease. It's been popular to diagnose it as pythium, then treat it as such. But that treatment doesn't

### INSIDE . . .

	Page
Calendar of Events . . . . .	2
UMass News . . . . .	2, 6
The Super Speaks Out . . . . .	3
Research: TurfNet Grants . . . . .	4
From the President . . . . .	4
GCSANE News . . . . .	5
GCSAA News . . . . .	5
Divot Drift . . . . .	6
Host Superintendent Profile . . . . .	8





**PRESIDENT**  
Robert Ruzala  
69 Gelinas Drive, Chicopee, MA 01020  
413-256-8654 Fax 413-256-8654  
Hickory Ridge Country Club

**VICE PRESIDENT**  
James R. Fitzroy, CGCS  
357 W. Squantum Street, North Quincy, MA 02171  
617-328-1776 Fax 617-328-9479  
Presidents Golf Course

**SECRETARY**  
Michael V. Iacono, CGCS  
42 Newton Street, Weston, MA 02493  
781-899-7913 Fax 781-647-0602  
Pine Brook Country Club

**TREASURER**  
Daniel P. Higgins, CGCS  
68 Hutchinson Road, Winchester, MA 01890  
781-729-3809 Fax 781-721-1561  
Winchester Country Club

**TRUSTEE**  
David Comee  
65 Marquette Road, Gardner, MA 01440  
978-297-1223 Fax 978-297-0911  
The Winchendon Golf Club

**TRUSTEE**  
Wayne F. LaCroix, CGCS  
5 Radcliff Drive, Andover, MA 01810  
978-475-6638 Fax 978-475-9488  
Andover Country Club

**TRUSTEE**  
Patrick S. Kriksceonaitis  
4 Lakemans Lane, Ipswich, MA 01938  
978-526-4600 Fax 978-526-8333  
Essex County Club

**FINANCE CHAIRMAN**  
Arthur Silva, CGCS  
35 Pennacook Road, Tewksbury, MA 01876  
781-484-5440 Fax 781-484-6613  
Belmont Country Club

**GOLF CHAIRMAN**  
Michael J. Hermanson  
P. O. Box 145, Gardner, MA 01440  
978-632-2713 Fax 978-632-2713  
Gardner Municipal Golf Course

**EDUCATION CHAIRMAN**  
Ronald P. Dobosz, Jr.  
1137 Park Street, Stoughton, MA 02072  
781-341-8564 Fax 781-341-8564, \*51  
Cedar Hill Golf Course

**NEWSLETTER CHAIRMAN**  
Russell E. Heller  
59 Park Street, Melrose, MA 02176  
978-256-5664 Fax 978-256-0005  
Chelmsford Country Club

**PAST PRESIDENT**  
Kevin F. Osgood  
14 Inman Lane, Foxborough, MA 02035  
617-630-1950 Fax 617-969-8756  
Newton Commonwealth Golf Course



**GCSANE Headquarters**  
175 Highland Avenue, Needham, MA 02494-3034  
(781) 453-8668 Fax (508) 758-6474

Newsletter Editor . . . . . **Russell Heller**  
Contributing Editor . . . . . **Gerry Finn**  
Business Manager . . . . . **Daniel P. Higgins, CGCS**

Information contained in this publication may be used freely, in whole or in part, without special permission as long as the true context is maintained. We would appreciate a credit line.

*continued from page 1*

"Gray leaf spot is especially dangerous in late August and all of September. But this is such a wet year it could surface at any time.

"This disease is so new, so young that we're not sure about its survival properties. We don't know if it survives winter up here. Regardless, we're very excited about the possibility of a golf course superintendent conducting a test of his own, on the spot, if you will, and getting a correct diagnosis in about ten minutes."

Another pet project on Dr. Schumann's agenda is pink snow mold. Again, she has enlisted the aid of another research assistant, Richard Anair, Jr., in the attempt to come up with a method of controlling another pesky disease that makes maintenance life something less than enjoyable for many superintendents.

"We're past the diagnostic stage in pink snow mold," she tells. "Now we're looking for a way to control it. Again, getting those samples from superintendents is vital to our cause. What we do know about pink snow mold is that it likes the weather we've had most of the summer — cool and wet.

"As all of us know, weather is so important when it comes to pinpointing the type of disease we're looking for and how to control it. And, unfortunately, we also know how variable weather can be in our little corner of the world. We could find the remedy for pink snow mold anytime. New chemicals can pop up and a remedy is at hand."

One other project of note is the overall search for fungicides that aren't really

fungicides. "We're talking about the perfect cure for turf diseases," Dr. Schumann explains. "Remedies that turn on the natural defense components of plants and bypass possible side effects of regular fungicides.

"We're into comparing products of this nature and putting them to the test of controlling diseases like dollar spot. This is one project that's appealing to environmentalists. It's also appealing to us because natural defenses against disease are preferable at any level."

This, then, has been an exciting summer for Dr. Schumann, her staff, and other members of her turf disease-fighting team. Each day Gail and her colleagues inch closer to their selected goals. It all comes with the golf course superintendent in mind, plus the support he contributes to the efforts of turf research. Eventually, it makes his job a little easier, his world a little better.

**GERRY FINN**

## CALENDAR . . .

- |            |   |
|------------|---|
| Sept. 25   | <b>GCSANE Monthly Meeting<br/>Team of Two Championship</b><br>Country Club of Pittsfield<br>Pittsfield, Mass.<br>Supt. - Jim Conant, CGCS               |
| October 2  | <b>GCSANE Monthly Meeting<br/>Individual Championship</b><br>Mt. Pleasant Country Club<br>Boylston, Mass.<br>Supt. - Todd Sauer                         |
| October 18 | <b>John Shanahan Memorial<br/>Pro/Supt. Tournament*</b><br>Willowbend Country Club<br>Mashpee, Mass.<br>Supt. - Mark Casey<br>(*Register through NEPGA) |
| November 6 | <b>GCSANE Monthly Meeting<br/>Annual 9-Hole Meeting</b><br>Lexington Country Club<br>Lexington, Mass.<br>Supt. - Len Curtin                             |
| Nov. 14    | <b>GCSAA Seminar</b><br>Integrated Environmental Mgmt.<br>The International Golf Club<br>Bolton, Mass.  |
| Nov. 15    | <b>GCSAA Seminar</b><br>Turfgrass Traffic Stress Mgmt.<br>The International Golf Club<br>Bolton, Mass.  |
| Dec.       | <b>GCSANE Monthly Meeting</b><br>Date and location<br>to be announced   |
| Dec. 9     | <b>GCSANE Christmas Party</b><br>Essex County Club<br>Essex, Mass.  |

*continued on page 8*



# The Super Speaks Out

**This month's question:** *With this summer's cool and wet weather making grass grow at an alarming rate and height, how do you keep up with mowing the rough on a regular basis?*

**Anthony Grosso, Pautipaug Country Club:** "This is my eighth year at Pautipaug and I can't remember any summer when the grass was growing like it is now, completely out of control.

"Actually, this is August and I've been able to keep up with the rapid growth until the last two weeks. Of course, that's when we got a little sun and heat to instigate the growing process. That's when I had to go to extreme measures to get a decent cut of rough.

"When I say growth, I mean major league growth. There have been some areas of rough where the grass was 8" in height. That was the nightmare part of the deal.

"When things got to a stage when we had to get out hand mowers and even push mowers, keeping up with the rough was virtually impossible. In the middle of the summer I was into a 1¾" cut to make it easier on the golfers. Then, with the grass shooting up, we went to a 2½" cut. It was very tough to keep up with it, even at that height, but we toughed through it.

"My next big problem also relates to mowing, since the end of August is in sight and I'll be losing most of my part-time or seasonal help. What this will do to the mowing program is put more pressure on those of us still around to keep things under control.

"I have to compliment the golfers who play our course. They have been fine about the grass heights and sometimes inconvenient conditions brought on by the wet weather and spurt of growth when the sun came out. One of the reasons for their patience is the lengths we went to give them an intermediate rough area. That softened the blow from some of those high-cut areas.

"All in all, we've managed to keep the course in relatively good playing condition when the weather went screwy from almost the start of spring. But as I said before, if we get continued wild growth

and most of my kids going back to school, I have to be worried about what happens down the road. Whatever occurs, we'll be doing everything possible to produce a decent cut."

## THE SUPER SPEAKS

**Matthew Behl, Haverhill Country Club:** "I've been looking at this year with one eye on the present and another on the future. What I mean is I'm wondering if a change from wet, wet weather to hot and humid is going to spoil what I consider a pretty good maintenance year for me. After all, although I've been here several years, this is my first full season as the head superintendent. I'm thinking that maybe the worst of times hasn't happened yet.

"No doubt about it, this summer has been a test of enough manpower versus Mother Nature in the matter of having buckets of rain for most of the golf season, then hot and humid conditions taking over. That's what happened here, causing a mowing schedule you wouldn't believe. How about eight hours a day for five days a week and throwing in a Sunday night cut for good measure?

"That's how we've been getting the grass cut job done. Keeping up with the height of the rough (we try to hold steady at 2½") has been just that. Mow, mow, and mow until it gets to that height or at a decent level so our golfers have a chance to get back on the fairway.

"The reaction from the golfers has been favorable. Most of them accepted the fact that mowing was very difficult. In fact, only the high handicappers had any gripes and they were mild. Our low handicappers thought the grass was thick and lush. They looked on the situation as a challenge to their abilities.

"At the bottom line, though, was my feeling this was going to be a year of turf

disease. With this though, I sprayed from top to bottom after the rains let up. I looked at the mowing problem as more of a nuisance than anything else. My crew worked hard and got the job done. Now, I'm sweating the hot, humid stuff . . . when disease sometimes takes over."

**Nathan Walker, Ipswich Country Club** (assistant to head superintendent Rod Karcher): "We just got through the most important week for our members, the three-day member-guest tournament, when it rained every day except for one and the rainfall for the week hit 7".

"Our aim was to bring the course up to the playability standards of past member-guest events. There are 12 guys on the crew and they worked long and hard to reach that goal. What it meant was having the mowers going at all time of the day and night. We even brought trucks out at night, put on their lights and kept the mowers buzzing.

"We tried everything to get to that magic rough height of 2½". We changed directions, going toward the hole and then coming back the opposite way. It was nothing to make four or five passes a day through our roughs. In the end, I'd say about 85% of the roughs hit that magic height.

"This has been the wettest season that I remember. Thankfully, our members understand that this is an unusual situation and I think they appreciated the effort all of us made during member-guest week. Regardless, I'll still take green and mushy over hard and dry like we had last year. It just proves we have to be able to do the job no matter what the weather brings. Hey, today was the first day we had control of the grass. That's what I call a stress situation."

**GERRY FINN**

*"I'll still take the green and mushy over hard and dry like we had last year."*

**Nathan Walker  
Ipswich C.C.**



# TurfNet awards research & extension grants

TurfNet Associates has awarded five \$1000 grants to support the research and extension efforts of university specialists who have utilized TurfNet over the years to disseminate timely information on turfgrass pests and disease activity to golf course superintendents.

The unrestricted grants-in-aid were awarded to:

- Dr. Patricia Vittum, University of Massachusetts (Entomology)
- Dr. Gail Schumann, University of Massachusetts (Plant Pathology)
- Dr. Bruce Clarke, Rutgers University (Plant Pathology)
- Dr. David Shetlar, Ohio State University (Entomology)
- Dr. Rick Brandenburg, North Carolina State University (Entomology).

According to Peter L. McCormick, president of TurfNet Associates, these first grants are "relatively small in amount

and number, but will hopefully grow as TurfNet continues to grow over time. We hope to be able to recognize and support more of our university participants in a similar fashion in the future.

## RESEARCH

"Before electronic communication became widespread, golf course superintendents had to attend off-season seminars to learn what they could have or should have done back in the heat of the season to combat various insect or disease problems," said McCormick. "Thanks to these individuals and our other participating university specialists, that time lag is gone. Field observations or research results can now be broadcasted instantly."

Several of the grant recipients noted that small projects "waiting in the wings" or in the planning stage are often more difficult to fund than major undertakings, and expressed appreciation at now being able move forward.

Dr. Dave Shetlar intends to use the grant to pay a student to convert host fact sheets, course content, and other diagnostic items into HTML for a new Ohio State turf website being planned.

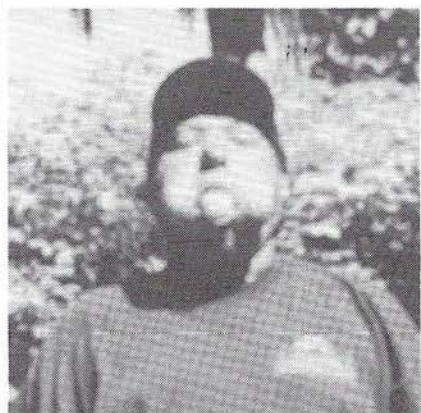
Dr. Pat Vittum plans to use the money to offset transportation costs associated

with her field research on the annual bluegrass weevil in the northeast.

Dr. Gail Schumann is conducting a study through the UMass Turf Disease Diagnostic Lab (in conjunction with Dr. Wakkar Uddin at Penn State and 10 cooperating golf course superintendents in both New England and Pennsylvania) with a new antibody that detects *Pyricularia grisea*, the fungus that causes gray leaf spot in perennial ryegrass. Because the opportunity to conduct the study came up suddenly this past spring and there was no time to apply for a funding grant, Dr. Schumann plans to use the TurfNet monies to partially fund the labor, lab equipment and supplies needed to conduct the study.

The grant to Dr. Rick Brandenburg will be put toward NCSU's ongoing effort to document the spread of the oriental beetle in western North Carolina and evaluate cultural and chemical control of the white grub stage on cool and warm season turfgrasses in that area.

Dr. Bruce Clarke will use the grant to support a greens research project conducted by one of his students, Jennifer DiMarco. Jennifer is studying the impact of nitrogen, cutting height, and fungicide timing on the susceptibility of eight new bentgrass cultivars to foliar diseases.



## A new requirement for certification?

We received this photo of **Mike Autiello**, course worker at Andover Country Club, but unfortunately it was without caption.

We wonder if his mouthful of golfballs is: (1) A new requirement for GCSAA certification?; (2) Just a typical eccentricity we see in a tight labor market?; or (3) Simply a cheap lunch? Please let us know.

## GCSANE members pledge over \$5600 to Francis Ouimet Scholarship Fund

I am very happy to announce that the members of GCSANE have pledged more than \$5,600 to the Francis Ouimet

## FROM THE PRESIDENT

Scholarship Fund. A sincere *Thank You* to all of the members who donated to this fund. A big *Thank You* is also in order for Jim Fitzroy, CGCS, chairman of the fund raiser phone-a-thon, along with his committee, who are Steve Curry, Dick Duggan, Rob Larson, Roy Mackintosh, Jim Reinertson, and Chris Tufts.

Also along this line, Dick Duggan played 354 holes of golf in one day. Congratulations

to Dick for a job well done. Dick began as GCSANE's golfer in this event three years ago. His first year he played 200 holes, followed by 235, and peaking with this year's 354. That is equivalent to playing 20 rounds of 18 holes in one day. Again, thank you to everyone involved for making the fund raiser successful.

The GCSANE Christmas Party will be Saturday, December 9 at the Essex County Club in Essex, Mass. Mark your calendars now for this annual event. Our host for the party will be Pat Kriksceonaitis. We will be sure to update everyone with more information when it becomes available.

Sincerely, **Bob Ruszala**



# GCSAA Limited Budget Outreach Program aims to offer support to smaller golf facilities

**By Bruce E. Cadenelli, Member, Limited Budget Outreach Group**

GCSAA's Limited Budget Outreach Program, the brainchild of Immediate Past President Dave Fearis, CGCS, is set to roll by late summer. The goal of the program is to reach out, identify, and better serve those golf facilities that many times, until now, have not been part of our family.

The program is intended to offer friendship and support to those facilities where many of us learned the game, and where many of today's new golfers receive their first introduction to the sport. This is GCSAA's and its member superintendents' effort to assist in growing the game. These limited budget facilities are vital to the continued growth and prosperity of golf, and need to be recognized as such and assisted wherever possible.

What the program is not is a recruitment drive by GCSAA. In our resource group meetings, we stated clearly that many of these clubs, for various reasons, would never join the national. If they join an organization, it will most likely be their local chapter.

Being part of the local allows for increased visibility and bonding with local superintendents. It also limits their economic exposure. Regardless of whether they join any group, the outreach program is intended to contact them, offer assistance and make them feel more a part of golf's family.

## GCSAA NEWS

As always, the local chapters will be instrumental in getting out the word, and working to ensure the program's success. Local chapters will be asked to identify limited budget facilities in their areas. They will be asked to develop lists of superintendent volunteers who will contact these clubs and arrange visits. GCSAA's role will be to assist chapters with printed materials in the form of a resource kit, which will aid in the exchange of information. As this is a new venture, responsibilities will shift, change and grow as the program evolves.

Steve Mona, Chief Executive Officer of GCSAA, will be attending the Golf 20/20 Conference in November. He will be bringing this program and its message to

*What the program is not is a recruitment drive by the GCSAA.*

that meeting. Again, this is one way we, as superintendents, will be assisting in growing the game and working toward ensuring its bright and prosperous future.

This is a great time to be involved with golf and with GCSAA. As the association approaches its 75th Anniversary, this outreach program will be one of our more important efforts. In working toward assisting limited budget facilities, we are working toward the continued growth for golf and the superintendents' profession.

## Scholarship & Bevevolence Committee announces scholarship recipients

The GCSANE Scholarship & Benevolence Committee has announced the scholarship award recipients for 2000. This is the sixth year of giving these awards. This year the committee awarded a total of \$6,500 to

## GCSANE NEWS

four students. That number represents the most ever awarded in one year. This brings the grand total to \$28,250 awarded to GCSANE member children.

This year the recipients are:

**Maureen Higgins**, Schofield Award Winner, \$2,000. Maureen, a graduate of

Winchester H.S., will be a freshman at Loyola College in Maryland.

**Janelle Chiavaroli**, \$1,500. Janelle recently graduated from Wachusett Regional H.S. and will be attending Eastern Nazarene College in the fall.

**Sarah Nagle**, \$1,500. Sarah also graduated from Wachusett Regional H.S. She will attend Syracuse University.

**Kendra Champion**, \$1,500. Kendra is a graduate of Swampscott H.S. and will attend University of Rhode Island.

Congratulations to all the winners of this year's scholarships.



## Consider yourself a candidate

Applications for the 2001 Environmental Steward Awards are available from the May issue of Golf Course Management magazine, affiliated chapter presidents, program sponsors, the GCSAA service center (800-472-7878) or the GCSAA web site: [www.gcsaa.org/environ/esaapp01.html](http://www.gcsaa.org/environ/esaapp01.html).

We'll look forward to receiving your application by October 2, 2000.

RAINBIRD

PTI

NOVARTIS

TEXTRON GOLF & TURF



A partnership program benefiting the GCSAA Foundation



# UMass offers seminar on new IPM system protocols

**Protocols for an IPM System on Golf Courses** is the title and focus of a seminar offered by UMass Extension on Tuesday, Oct. 31, 2000 at the Auburn Elks Club in Auburn, Mass.

The *Protocols* are a set of standard guidelines which can be used to specify, develop, implement, and verify an economically sensible IPM system on a golf course.

The *Protocols* are the result of a cooperative effort carried out over the past three years between the University of Massachusetts Turf Program and

GCSANE. UMass and Cornell University specialists as well as superintendents who participated in implementing and verifying IPM systems on their courses will make presentations on a range of topics.

## UMASS NEWS

Seminar topics include: writing and using an annual management plan; mapping the course; what's important in a weather forecast; carrying out a meaningful experiment on your golf

course; setting thresholds; monitoring; and using the *Protocols* as a tool for IPM.

For information and registration, contact Mary Owen at (508) 892-0382; [mowen@umext.umass.edu](mailto:mowen@umext.umass.edu).

All regular GCSANE members will receive a copy of *Protocols for an IPM System on Golf Courses* in mid-October. Others interested in purchasing a copy should contact Mary Owen. Development of the publication was supported in part by the Lonnie Troll/GCSANE Turf Research Fund and the Mass. Dept. of Food & Agriculture.

## DIVOT DRIFT...announcements...educational seminars...job opportunities ...tournament results...and miscellaneous items of interest to the membership.

### MEMBERSHIP

**Welcome New Members:** Dave Vanderklish, Assistant, Putterham Meadows G.C.; Serafin Costa, Superintendent, Hillside C.C.; Paul Lever, Jr., Assistant, Bass Rocks G.C.

**Proposed For Membership:** Michael Varkonyi, Superintendent, Reservation G.C.; Scott Pierce, Superintendent, Franconia G.C.; James Small, Superintendent, Bridgewater G.C.; Matthew Hayes, Assistant, Woodland G.C.; Michael Isleb, Assistant, Wellesley C.C.

### INFORMATION

**Thanks** to Doug Johnson, Lionel Mello, and the entire staff at Acushnet River Valley G.C. for hosting the August meeting.

**Our condolences** go to Mike Cornicelli and family on the recent passing of Mike's father.

**The Membership Committee** has sent out notices to all current GCSANE members for information updates. The information will be used to update the association directory. It is vital all members complete all the information, even if nothing has changed. The committee hopes to have the new directories available at the Annual Meeting. If you have any questions or did not receive anything in the mail, please contact Wayne LaCroix or Sharon Brownell.

**The September meeting** golf format at Pittsfield Country Club will be Team of Two Championship. Please note that superintendents and assistants play with other superintendents or assistants while affiliates play only with affiliates.

**Matthew Grady** has left Longmeadow C.C. and joined Sawtelle Brothers.

**Andrew Malone** has taken the superintendent position at Maynard C.C. after serving in that position at Patriot G.C.

**The J.R. Simplot Company** announced the acquisition of Turf Partners from Eco Soil Systems, Inc. (ESSI). The nationwide distribution channel will immediately take the name Simplot Partners. It will function as a separate business unit within Simplot (Turf & Horticulture) along side the Professional Products and Jacklin Seed divisions. Formerly the exclusive distribution arm for ESSI, Simplot Partners will continue to function as a full-service distributor supplying proprietary and traditional turf maintenance products from a variety of industry leading suppliers.

**GCSAA asks: You've served our local chapter - Are you ready to serve the national?** The GCSAA requires no secret code or handshake. If interested in committee service next year, simply submit a volunteer interest form by Oct. 1. The GCSAA will then request information from the chapter president. Materials will be compiled for the incoming chairmen and president to review, and then committee and resource group appointments will be announced in early April. **Responsibilities:** Preparing for and participating in one committee meeting and/or conference calls (GCSAA pays for travel expenses); responding to phone, fax, and E-mail requests for information; and communicating ideas and issues to the committee chairman or staff liaison. **Rewards:** Networking with other GCSAA leaders; knowing you are contributing to the quality and value of GCSAA membership; and honing communication, planning, and analysis skills. **How to volunteer:** Submit the volunteer interest form in the committee directory section of the GCSAA's web site at [www.gcsaa.org](http://www.gcsaa.org). Forms are also available at the GCSAA service center ([mbrhelp@gcsaa.org](mailto:mbrhelp@gcsaa.org)) or by phone at (800) 472-7878.

### GOVERNMENT RELATIONS

EPA has issued expansive new water rules in an effort to clean up the 40% of U.S. waterways that do not currently meet the agency's water quality goals. Under the new rules, states and local governments will now have the authority to set pollution limits based on local water conditions on a stream-by-stream basis. States will also be able to set their own Total Maximum Daily Loads (TMDLs) for waterbodies. The new program targets uncontrolled runoff by including "non-point sources" (rain, irrigation runoff) with "point sources" (factories, sewage treatment plants) when determining a waterbody's total TMDL. The program becomes effective Oct. 1, 2001.

### TOURNAMENT RESULTS

**Acushnet River Valley G.C.**  
Acushnet, Mass.  
August 14, 2000

6302 yards, par 72

1st Low Gross: Carl Oliveira (71)  
2nd Low Gross: Andy Langlois (77)\*

1st Low Net: Larry Anshewitz (66)  
2nd Low Net: Bob Mucciaroni (67)  
3rd Low Net: Joe Eckstrom (68)  
4th Low Net: Kevin Osgood (69)  
\* winner on match of cards

Closest to the Pin:  
Hole #6 (138 yards): Greg Frederick (5'8")  
Hole #8 (180 yards): Carl Oliveira (8'6")



# Please Patronize these FRIENDS of the ASSOCIATION

## A-OK Turf Equipment Inc.

1357 Main St., Coventry, RI 02816-8435  
Articulator, Terra Topper, Greens Groomer  
brush, & used equipment.  
Mike Cornicelli - (401) 826-2584

## A.A. Will Materials Corp.

168 Washington St., Stoughton, MA 02072-1748  
Top dressing & bunker sand, decorative stone,  
landscape materials.  
Charlie Downing, Mike Read  
(800) 4-AA-WILL

## Agr-Evo U.S.A. Co.

Wilmington, DE  
Acclaim Extra, Banol, ProStar, ProGrass,  
Finale, Turcam, DeltaGard.  
David Sylvester - (860) 828-8905

## Allen's Seed Store Inc.

693 S. County Trail, Exeter, RI 02822  
Specializing in quality seed and related  
golf course maintenance supplies.  
Gregg Allen - (800) 527-3898

## Bay State Fertilizer/MWRA

100 First Ave., Boston, MA 02129  
Manufacturer & supplier of dry organic fertilizers.  
Kristen Patneaud - (617) 788-4437

## Bayer Corporation

118 Ellery Ave., Middletown, RI 02842  
Bayleton, Merit, Dylox, Tempo  
Brad Herman - (800) 842-8020

## The Borden Company

114 Summer St., Maynard, MA 01754-2216  
Bulk limestone dealer.  
Jack Borden - (978) 897-2571

## Boston Irrigation Supply Company

60 Sturgis Way, Dedham, MA 02026  
Distributor, irrigation supplies & accessories.  
Andy Langlois, J. Anderson III  
(800) 225-8006

## Breudan Corporation

40 Walker St., Swansea, MA 02777  
Doug Hopper - (508) 379-0092

## The Cardinals, Inc.

166 River Rd., P.O. Box 520  
Unionville, CT 06085-0520  
Golf course and landscape supplies.  
John Callahan, Dennis Friel - (800) 861-6256

## Casey & Dupuis Equipment Corp.

340 Pleasant St., Watertown, MA 02472  
Construction/earthmoving equipment sales  
& rentals; all sizes of job equipment available.  
Paul Casey - (617) 924-7575

## Cavichio Landscape Supply, Inc.

110 Codjer Lane, Sudbury, MA 01776  
Annuals, perennials, garden mums, ground  
covers, loam, and mulch.  
Darren Young - (978) 443-7177

## Cedar Lawn Tree Service, Inc.

32 Nickerson Rd., Ashland, MA 01721  
Pruning, fertilization, removal,  
and professional care.  
William P. Maley - (508) 881-2622

## Cornish, Silva, & Mungeum, Inc.

207 N. Main St., Uxbridge, MA 01569  
Golf course architects.  
(508) 278-3407

## Country Club Enterprises

P.O. Box 820, Cataumet, MA 02534  
Club Car golf cars, Carryall utility vehicles.  
Dave Farina, Darin Eddy, Darren Orr  
(800) 662-2585

## Country Golf, Inc.

4852 Westchester Dr., Traverse City, MI 49684  
Golf course construction & reconstruction;  
specialists in Donald Ross courses.  
Jerry Deemer - (616) 947-5751

## Dow/Elanco

560 Ashwood Rd., Springfield, NJ 07081  
Bob Scott - (908) 510-5549

## Michael Drake Construction, Inc.

240 Walnut St., Framingham, MA 01702  
Golf course reconstruction; professional shaper.  
Michael Drake - (508) 875-8247

## F.A. Bartlett Tree Expert Co.

640 Hale St., Beverly Farms, MA 01915  
Complete tree care, landscape design  
& construction, disease control,  
long-range planning.  
Ben Staples - (978) 927-1590

## F.D.I., Inc.

(Fairway Design Illustration)  
95 Railroad Ave., Warren, RI 02885  
Custom granite signs and markers.  
Joseph K. Martin, Robert Page  
(800) 358-8337

## Gold Star Nursery & Sod Farm

250 West Rd., Canterbury, NH 03224-2127  
Growers of turfgrass and ornamentals  
Malcolm McPhail  
Lexington, MA - (781) 861-1111  
Canterbury, NH - (603) 783-4717

## Green Environmental

216 Ricciuti Dr., Quincy, MA 02169  
Civil engineering, Title V, environmental  
consulting/site assessment,  
above-ground/UST construction  
Glenn Ferguson - (617) 479-0550

## Greeno, Inc.

2352 Main St., Concord, MA 01742  
Tree transplanting, landscape construction,  
and masonry  
Kevin Mulcahy - (800) 439-7244

## Charles C. Hart Seed Co., Inc.

P.O. Box 9169, Wethersfield, CT 06109-0169  
Roy Sibley, Dick Gorski  
(800) 326-HART

## Hartney Greymont

433 Chestnut St., Needham, MA 02492-2822  
Tree care, landscape construction, consulting.  
Mark Tobin - (781) 444-1227

## International Golf Construction Co.

5 Purcell Rd., Arlington, MA 02474  
Golf course construction.  
Antonios Paganis - (781) 648-2351;  
(508) 428-3022

## Irrigation Management & Services

21 Lakeview Ave., Natick, MA 01760  
Irrigation consultation, design, and  
system evaluation.  
Bob Healey, ASIC, CID - (508) 653-0625

## Tom Irwin Inc.

118 A St., Burlington, MA 01803-3404  
Jack Peterson, Wayne Ripley, Paul Skafas,  
Chris Peterson, Jack Pluta, Greg Misodoulakis  
(800) 582-5959

## Ken Jones Tire, Inc.

71-73 Chandler St., Worcester, MA 01613  
Distributor of tires for lawn & garden, trucks,  
cars, industrial equipment, and golf cars.  
Gerry Jones - (508) 755-5255

## Landmark Construction

P.O. Box 662, Winchester, MA 01890  
Tee/bunker shaping & remodeling, cart paths,  
drainage, tree planting, landscape construction.  
Daniel Champion - (781) 729-3250

## Larchmont Engineering & Irrigation

11 Larchmont Lane, Lexington, MA 02420-4483  
Marc Utera - (781) 647-3361

## Lazaro's Golf Course

### Supplies & Accessories

dba Hammond Paint and Chemical Co., Inc.  
738 Main St., Suite 223, Waltham, MA 02154  
Complete line of golf course accessories;  
Standard, Par Aide, Eagle One.  
Joe Lazaro - (781) 647-3361

## Lesco, Inc.

20005 Lake Rd., Rocky River, OH 44116  
Ron Tumiski, Mike Donohue, Jim Wierzbicki  
(800) 321-5325

## Lofts Seed, Inc.

22 Lantern Lane, Exeter, RI 02822  
Victoria Wallace - (800) 648-7333

## D.L. Maher Co.

71 Concord St., P.O. Box 127  
North Reading, MA 01864-0127  
Water supply specialists; water wells  
& pumping equipment.  
(781) 933-3210

## McNulty Construction Corp.

P.O. Box 3218, Framingham, MA 01705-3218  
Asphalt paving of cart paths, walkways,  
parking areas; imprinted asphalt.  
John McNulty - (508) 879-8875

## Miller Golf Construction

1 Leicester Rd., Marblehead, MA 01945  
Golf course construction & renovation  
Jonathon Miller - (781) 631-2030

## R.F. Morse & Sons, Inc.

22 Cranberry Hwy., Wareham, MA 02576-0099  
Larry Anshewitz, Jack Cronin, Chris Cowan,  
Alan Anderson - (508) 295-1553

## Nardone Sand and Gravel, Inc.

37 Power Rd., Westford, MA 01886-4112  
Topdressing sand & mixes, bunker sands, root-zone  
mixes, loam, cart path materials, drainage stone.  
Greg Frederick - (978) 692-8221

## North Shore Hydroseeding

20 Wenham St., Danvers, MA 01923  
Hydroseeding, erosion control, & tree services  
Brian King - (978) 762-8737

## Novartis Specialty Products, Inc.

394 Monson Tpk. Rd., Ware, MA 01082  
Banner MAXX, Barricade, Subdue MAXX, Primo  
Dave Ravel - (413) 967-6745

## Partec Peat Corporation

Kelsey Park, Great Meadows, NJ 07838  
Heat treated topdressing, golf hole targets,  
turf blankets, other specialty golf supplies.  
Jim McKersy - (800) 247-2326

## Prescription Turf Services, Inc.

P.O. Box 39, Middleton, MA 01949  
Deep-tine and hydro-injection services,  
custom fertilizer & pesticide applications,  
fairway aeration, topdressing operations.  
(978) 777-1663

## Read Custom Soils

171 VFW Drive, Rockland, MA 02370  
Topdressing, root-zone mixes, bunker sand,  
3/8 screened loam, cart path materials,  
mulch, drainage stone.  
Joe Farina, Frank Santos - (888) 475-5526

## Sawtelle Brothers

65 Glenn St., Lawrence, MA 01843  
Bob Brown, Larry Bunn, Mike Hannigan,  
Frank Higgins, John Lenhart - (978) 682-9296

## SBI Turf Services

65 Glenn St., Lawrence, MA 01843  
Deep-tine, core, & water-injection aeration,  
DOL & Verti-Seed overseeding, irrigation services.  
Jim Favreau - (800) 999-TURF

## Shawnmark Industries, Inc.

P.O. Box 8966, Warwick, RI 02999  
Matt Howland - (401) 295-1673

## Simplot Partners, Inc.

15 Londonderry Rd., Londonderry, NH 03053  
Turf & ornamental supplies.  
Chuck Bramhall, Jim Cohen, Geoff Houghton,  
Rick Howe, Mike Kroian, Mike Nagle  
(800) 228-6656

## Sodco Inc.

P.O. Box 2, Slocum, RI 02877  
Bluegrass/Fescue, Bluegrass/Rye,  
Bluegrass/Fescue/Rye, Bentgrass  
Matt Faherty, Pat Hogan - (800) 341-6900

## Sports Club Management

104 Wyman Rd., Braintree, MA 02184  
OSHA and EPA compliance services and training  
Ron Smith - (781) 848-5978

## Dahn Tibbett

### Professional Golf Services

dba Weed & Feed, Inc.  
20 Clark Lane, Marshfield, MA 02050  
Specialists in golf course construction,  
bunker restoration, and irrigation installation.  
(781) 837-3503

## Tee and Green Sod, Inc.

P.O. Box 418, Exeter, RI 02822  
Bentgrass, Bluegrass, and Blue/Fescue sod.  
Dave Wallace, Robin Hayes  
(401) 789-8177

## Tuckahoe Turf Farms, Inc.

P.O. Box 167, Wood River Junction, RI 02894  
Chris Beasley - (800) 556-6985

## Turf Enhancement Enterprises

6 Jessica J Dr., Millbury, MA 01527  
Florist products, Precision Small Engine Co.,  
Douglas Rollers, Trion Lifts.  
Tom Fox - (508) 865-9150

## TurfNet Associates, Inc.

21 Brandywine Rd., Skilman, NJ 08558  
Cutting edge communication for  
the golf course industry.  
Peter McCormick - (800) 314-7929

## Turf Products Corp.

157 Moody Rd., Enfield, CT 06082  
Distributors of Toro irrigation and maintenance  
equipment and other golf-related products.  
Tim Berge, Paul Hallock, Rick Moulton,  
Mike Turner - (800) 243-4355

## United Horticultural Supply

18 Legate Hill Rd., Sterling, MA 01564  
Fertilizer, seed, chemicals, and IPM.  
Glenn Larabee, Bruce Chapman, Mark Miller  
(800) 224-4440

## Varney Bros. Sand & Gravel

79 Hartford Ave., Bellingham, MA 02019  
Concrete golf cart paths.  
Kenneth Mooradian - (800) 441-7373

## Waterflowers Ecological Design

116 North Street, North Reading, MA 01864  
Environmental audits, planning/design,  
& permits for all environmental details  
Terry Bastion - (978) 664-8059

## Winfield Nursery, Inc.

1700 Mountain Rd., W. Suffield, CT 06093  
Wholesale nursery trees and shrubs.  
Stan Hildreth

## Philip Wogan & George F. Sargent, Jr.

Golf Course Architects  
17 Walker Rd., Topsfield, MA 01983  
(978) 887-3672

## Zip Type Service

50 Kent Street, Newburyport, MA 01950  
Design, printing, mailing, advertising specialties.  
Sheila Johnson - (978) 462-9358



# Meet host superintendent Jim Conant, Country Club of Pittsfield

Host superintendent for the September meeting of GCSANE is Jim Conant of the Country Club of Pittsfield in Pittsfield, Mass.

Jim has been the superintendent at Pittsfield for the past four years. He was previously superintendent at King's Way Golf Club in Yarmouthport, Mass., spending 11 years there. Jim also worked at Scarsdale Golf Club in Scarsdale, New York as assistant superintendent for three seasons.

He is a past president of the Golf Course Managers Association of Cape Cod and

spent eight years on their board. He has also spent time serving GCSANE as finance chairman and trustee for four years. He is

## HOST PROFILE

currently president of the New England Regional Turfgrass Foundation and has been an original board member for that conference for the last 10 years.

His other duties include serving on the Board of Park Commissioners for the

City of Pittsfield Parks Department; the UMass Turf Program Advisory Board; and the UMass IPM Steering Committee.

Jim received an Associate of Science degree in Turfgrass Management from Stockbridge School in 1983. He is also a Certified Golf Course Superintendent, having achieved that distinction in 1992.

Jim and Lynn, his wife of 16 years, live in Pittsfield with their three children, Bryan, 15, Kimberly, 12, and Joshua, 4. In his spare time he enjoys golf, skiing, photography, and keeping up with current events.

The Country Club of Pittsfield was organized in 1897. Architect Donald Ross did some work there in 1917, and was followed by Wayne Stiles four years later. A private club, it boasts excellent bent/poa greens and fairways. The tees are a mix of bent and rye, while the roughs consist of blue, rye, and fescue.

## Samples sought for study

*continued from page 6*

Are you interested in testing fungicide treatments and timing on your golf course? We have data from research plots on good fungicide combinations. Please call or e-mail. Graduate student Richard Anair will come to your course and evaluate

the results in the spring. We can then recommend the best treatments and timing for New England under real world conditions. For information contact Dr. Gail Schumann, Dept. of Microbiology, Fernald Hall, UMass, Amherst, MA 01003-2420; (413) 545-3413; E-Mail: [schumann@pltpath.umass.edu](mailto:schumann@pltpath.umass.edu).

FIRST CLASS



Return to:  
175 Highland Avenue  
Needham, MA 02494-3034

