



THE NEWSLETTER

November 2003

of the *Golf Course Superintendents Association of New England, Inc.*

Sponsors and administrators of the Troll-Dickinson Scholarship Fund – Awarded yearly to deserving Turf Management Students.

GCSAA Professional Development Initiative takes center stage at November meeting

The attendees at the November GCSANE meeting at Norfolk Golf Club were treated not only to a challenging golf course with great conditions, but also to an informative presentation by GCSAA Director of Member/Chapter Services, Scott Woodhead, on the Professional Development Initiative (PDI).

This initiative, approved by the GCSAA membership in 2001, went into effect on July 1, 2003. Scott Woodhead



Above, GCSAA Director of Membership **R. Scott Woodhead** gives his presentation on the Professional Development Initiative.

clarified the program in a one-hour presentation that was well received by GCSANE members. Members left with a good idea of just how easy it will be to maintain their Class-A status with GCSAA.

The Professional Development Initiative is based on the knowledge, skills, and abilities (otherwise known as competencies) demanded by the dynamic marketplace (i.e., what employers expect of golf course superintendents). The PDI targets the skills required to meet these increasing expectations. GCSAA will be able to deliver or direct members to quality educational experiences tied to these competencies. These experiences will lead to enhanced skill and knowledge levels that can then be documented. Once documented, these credentials can be marketed to employers as tangible and consistent within the profession. As the employer's needs change, so will the superintendent's competencies. New programs will be developed to meet the educational needs created by these increased demands.

GCSAA members will now have a means by which to document their continuing education efforts. This will provide members with the tools they need to communicate their value to employers and provide GCSAA with the opportunity to integrate this information into our national public relations campaign.

This past summer, all Class-A, Superintendent members, and Class-C members of GCSAA received a letter indicating their initial renewal cycle, being either three, four, or five years. In short, in order to maintain a Class-A status, an individual will be required to obtain on average, one point

per year. These points can be a combination of education points and service points. There are a minimum number of education points required, and then the rest can be service points. Education points can be used in place of service points, but not vice versa.

What is a point? Education points are what were formerly known as CEU's. These are points that are earned by attending learning events such as GCSAA seminars, college courses, chapter meetings with approved education, etc. Service points are earned by completing or participating in certain activities, such as attending chapter meetings without education, serving on national or chapter committees or boards, being involved in your community, completion of the Audubon program, etc. A big education point earner is the 1.5 education points given for attending the GCSAA Conference & Show. Attending this show annually in

continued on page 2

INSIDE . . .

	Page
Calendar of Events	2
Safety	2
PDI Point Chart	3
From the President	4
Scenes from Norfolk G.C.	4
UMass News	5
GCSANE News	4
Divot Drift	6
Turf Science	8



PRESIDENT
James R. Fitzroy, CGCS
357 W. Squantum Street, North Quincy, MA 02171
617-328-1776 Fax 617-328-9479
E-Mail: Jfritz39@rcn.com
Presidents Golf Course

VICE PRESIDENT
Michael J. Hermanson
140 Ryan Street, Gardner, MA 01440
978-632-2713 Fax 978-632-2713
E-Mail: Hermo68@hotmail.com
Gardner Municipal Golf Course

SECRETARY
Ronald P. Dobosz, Jr.
1137 Park Street, Stoughton, MA 02072
781-341-8564 Fax 978-526-8333 *51
E-Mail: Rdobosz111@aol.com
Cedar Hill Golf Course

TREASURER
Michael V. Iacono, CGCS
50 Newton Street, Weston, MA 02493
781-899-7913 Fax 781-642-0602
E-Mail: thebrook18@aol.com
Pine Brook Country Club

TRUSTEE
Patrick S. Kriksconaitis
4 Lakemans Lane, Ipswich, MA 01938
978-526-4600 Fax 978-526-8333
Essex County Club

TRUSTEE
Jason S. Adams
11 Woodcrest Lane
Blackstone, MA 01504
781-326-3801 Fax 781-326-3801
E-Mail: Jayadams35@hotmail.com
Norfolk Golf Club

TRUSTEE
Russell E. Heller
41 Clifford Street, Melrose, MA 02176
617-983-2786 Fax 617-983-2786
E-Mail: Rheller@gcsane.org
Franklin Park Golf Course

FINANCE CHAIRMAN
Arthur Silva, CGCS
35 Pennacook Road, Tewksbury, MA 01876
781-484-5440 Fax 781-484-6613
E-Mail: Silvacgcs@aol.com
Belmont Country Club

GOLF CHAIRMAN
David A. Comee
65 Marquette Street, Gardner, MA 01440
978-297-1223 Fax 978-297-0911
E-Mail: Dcomee@hotmail.com
The Winchendon Club

EDUCATION CHAIRMAN
Patrick J. Daly, CGCS
P. O. Box 2284, Framingham, MA 01703
508-872-9790 Fax 508-872-5393
E-Mail: Pat@framinghamcc.com
Framingham Country Club

NEWSLETTER CHAIRMAN
Michael W. Stachowicz
100 Ranch Club Road, Southwick, MA 01077
413-569-9333, ext. 211 Fax 413-569-9332
E-Mail: par5n2@yahoo.com
The Ranch Golf Club

PAST PRESIDENT
Robert Ruzsala
69 Gelinus Drive, Chicopee, MA 01020
413-256-8654 Fax 413-256-8654
E-Mail: Hrcc40@aol.com
Hickory Ridge Country Club

EXECUTIVE SECRETARY
Sharon K. Brownell
P. O. Box 566, Mattapoisett, MA 02739
508-758-6474 Fax 508-758-6474
E-Mail: Sbrownell@verizon.net



GCSANE Headquarters
300 Arnold Palmer Blvd., Norton, MA 02766
Tel.: (800) 833-4451 Fax: (508) 758-6474
Web Site: www.gcsane.org

Newsletter Editor **Michael Stachowicz**
Contributing Editor **Gerry Finn**
Business Manager **Julie Heston**
(E-Mail: jheston@verizon.net)

Any opinions expressed in this publication are those of the author and/or person quoted, and may not represent the position of GCSANE. Information contained in this publication may be used freely, in whole or in part, without special permission as long as the true context is maintained. We would appreciate a credit line.

continued from page 1

itself is enough to maintain Class-A status, a testament to the amount of education available at the annual conference.

Points need to be recorded by GCSAA members in the Member Central portion of www.gcsaa.org. Every effort should be made to do this within 30 days of the event. For regular meetings, service points can be recorded by going to this portion of the website and electronically signing an affidavit stating that you attended the meeting. The GCSAA will be auditing 10% of these affidavits and cross-referencing them with the attendance roster from the chapter meeting. So far this year, our meetings since July (The Shattuck, Marlboro C.C., Juniper Hills, Townsend Ridge, and Norfolk) are all worth .1 service points each.

Education points are recorded in a very similar way, but an event code is required in order to complete the affidavit. This code will be given at the actual educational session. Pat Daly, GCSANE Education Chairman, is in the process of getting education points and event codes for our winter meetings.

Could your turf care facility be the site of 'An Accident Waiting to Happen'?

By David Oatis, Director,
and Jim Skorulski & Jim Baird,
USGA Agronomists

These were the words of the prosecutor in a recent court case in Australia that convicted Warringah G.C. and their former superintendent of criminal negligence. A pesticide used on the course was discharged from a spray tank onto an uncontained concrete wash pad that drained into a nearby creek. Contamination resulted in the deaths of an estimated 10,000 fish and numerous waterfowl.

SAFETY

Could this happen on your course? Do you have a dilapidated turf care facility and pesticide storage and containment areas that do not conform to environmental regulations? According to the legal brief in the above case: "The evidence shows that a draft environmental policy and a master plan for the golf course were essentially

This program is very easy to participate in, if you have web access. Member Central at www.gcsaa.org is extremely informative and useful. It even provides you with access to your transcript, so members can verify their renewal cycle and check on their progress. For those without Internet access, GCSAA has set up a service called Fax on Demand at 888-838-4419. This service will fax paperwork required for recording points.

Take time this winter to check out Member Central, set up a folder for PDI correspondence, and get ready to start documenting. PDI is a reality and it is time to make it part of our record keeping.

Michael Stachowicz
Editor, GCSANE Newsletter

CALENDAR . . .

- | | |
|---------|--|
| Dec. 1 | GCSANE Monthly Meeting
Franklin Country Club
Franklin, Mass.
Supt. - Michael Luccini, CGCS |
| Dec. 12 | GCSANE Holiday Gala
Brae Burn Country Club
West Newton, Mass. |

not acted upon. Furthermore, the President has given evidence that the board had in recent years focused on other matters in the belief that they had no responsibility in respect of environmental matters and that it was entitled to delegate such responsibilities to management employees."

So ultimately who was responsible? The club was ordered to pay approximately \$600,000 in fines, court fees, and costs of cleanup as well as installation of proper pesticide storage and handling facilities. The superintendent was sentenced to community service, had to pay substantial legal fees, and lost his job.

If your facility needs improvement, now is the time to take the necessary measures to protect our environment and the game of golf. Consult your state or local environmental regulatory agencies for information on standards and specifications regarding the safe storage and handling of chemicals on the golf course.

Source: Jim Baird (jbaird@usga.org)

GCSAA Class-A Point Chart

Education Points:

Point Sources	Point Values	Verified	Recorded
Chapter meetings with education (must be pre-approved)	0.1 per hour	Education pt. affidavit	Within 30 days after event
Non-GCSAA education programs (pre-approved)	0.1 per hour	Education pt. affidavit	Within 30 days after event
State/Regional Turf Conferences (pre-approved)	0.1 per hour	Education pt. affidavit	Within 30 days after event
IACET Accredited programs - golf course mgmt. related	Varies 0.1 minimum	Education pt. affidavit	As occurs
GCSAA Seminars, Correspondence & Online Courses (view note)	0.1 per hour	Completion of evaluation	As occurs
Teaching - turf or business subjects	0.15 per hour or 1.5 per semester hour, max 2.0	Letter from sponsor	As occurs
College credit hours - golf course management related classes	1.5 per semester credit hour	Transcript	As occurs
Professional Development Resource (PDR) (self-assessment)	0.1 per year, up to 0.5 per renewal cycle	By GCSAA	As occurs, once/cycle
PDR Developmental Action Plan (DAP)	0.5 per renewal cycle	By GCSAA	As occurs, once/cycle
GCSAA National Conference Attendance (Full pack registrants only)	1.5 per year	GCSAA conference registration	As occurs
Cardiopulmonary Resuscitation (CPR)	0.1 per hour/max. 0.7	Copy of wallet certificate	As occurs, once/cycle
First Aid	0.1 per hour/max. 0.7	Copy of wallet certificate	As occurs, once/cycle
GCSAA Board LRP Meetings	1.0 per meeting	By GCSAA	As occurs

Service Points:

Point Sources	Point Values	Verified	Recorded
Giving informative speech (must submit lesson plan for ed points)	0.25 per presentation	Service pt. affidavit	As occurs
National Committee or Resource Group Service	0.5 per year/max 1.5 per renewal cycle	By GCSAA	At completion of service
GCSAA Board of Directors	1.0 per year	By GCSAA	At completion of service
Chapter/allied/golf/turf officer/ board of directors or First Tee board service	0.5 per year/max, 2.5 per renewal cycle	Service pt. affidavit	At completion of service
Chapter/allied/golf/ turf committee member (non BOD)	0.25 per committee/ max 1.25 per renewal cycle	Service pt. affidavit	At completion of service
Chapter Delegates Meeting in Lawrence	0.5 per year	By GCSAA	As occurs
Published education articles in trade or chapter publications	0.25 per article/ 0.5 in GCM	Service pt. affidavit	As occurs
Completion of ACSP Program for Golf Course	1.0 initial/ 0.25 recertification/ 1.5 max	Service pt. affidavit	As occurs
Individual participation in ACSP for Schools	0.5 per school	Checklist sign-off by school	As occurs
Completion of Audubon Signature Program	2.0 per course	Service pt. affidavit	As occurs
Mentor in Technical Assistance Network (TAN) Program	0.75 per facility (No maximum)	Complete checklist & follow-up	As occurs
Chapter meetings without education	0.1 per meeting	Service pt. affidavit	As occurs
Completion of Performance Measurement Survey	0.25 per year upon completion and submittal	By GCSAA	As occurs
Community Service (non-paid, voluntary)	0.1 per 5 hrs/max, 1.0 per renewal cycle	Service pt. affidavit	As occurs

Note: Credit can be received for attending the same on-site seminar more than once within a five-year renewal cycle. Credit will not be awarded for repeating correspondence/self study courses (unless the course has been substantially revised or updated.)

GCSANE Distinguished Service Award goes to Donald Hearn, GCSANE & GCSAA past president

We are pleased to announce that the 2004 GCSANE Distinguished Service Award is being presented to Donald C. Hearn, CGCS, superintendent of the Vesper Country Club. As you know, Don is a past president of GCSANE as well as past president of the Golf Course Superintendents Association of America. Don has served our industry with pride and professionalism and has been a mentor to many of us. We are certainly honored to have Don as a worthy recipient of our award and member of our association.

I hope everyone has made the necessary arrangements to attend our annual Holiday Gala on December 12 at Brae Burn Country Club. Bob DiRico, our host, and Art Silva, chairman of the event, assure me this will be the best event ever. In keeping with the holiday spirit, we will be again collecting Toys for Tots.

Those who attended the November meeting at the Norfolk Golf Club were able to gain a better understanding of the

Professional Development Initiative. Scott Woodhead presented a clear picture of the requirements for Class-A membership in GCSAA. It is certainly easy to go online to update your status, and for those who

FROM THE PRESIDENT

don't use the website, the documentation is available by fax on demand. Just call GCSAA headquarters at 888 838-4419, and any forms needed to update your Class-A status will be faxed to you. One of the main points Scott emphasized was how meeting attendance service points quickly build towards you retention of Class-A status. Additionally, our education programs at the winter meetings and the New England Regional Turfgrass Conference & Show should meet all education requirements.

I want to extend a personal thanks to all those who hosted golf meetings in 2003. Visiting and playing a wide array of

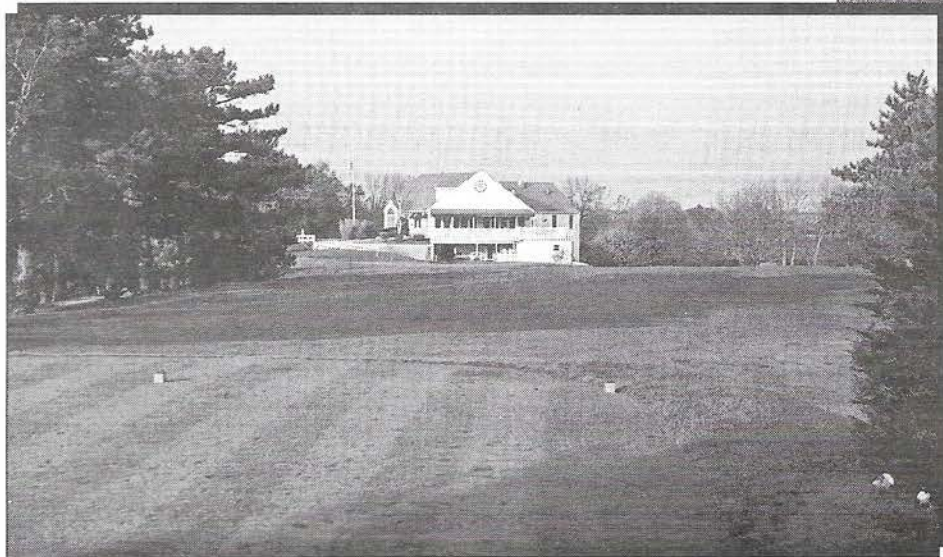
courses certainly helps us all bring back ideas that allow us to better manage our own facilities. And what a wonderful fall day we experienced when we visited the Norfolk Golf Club. Jason Adams should certainly be proud of the playing conditions he has achieved after a devastating winter and spring. I personally thought the course was perfect.

Dave Comee is looking for a few meeting sites to complete the 2004 schedule. So if you haven't hosted a meeting in a few years, please call Dave and make your course available. And I'm sure we can reserve dates for our 2005 schedule. And thank you to those who have made the effort to secure their course for our meetings next year.

I hope you all have had a successful fall season and we can move to our off-season work.

Sincerely,
James R. Fitzroy, CGCS
President, GCSANE

Scenes from the November GCSANE meeting at Norfolk G.C.



Norfolk, Mass. November 3, 2003

In the photo at left is the 9th hole at Norfolk Golf Club, with the clubhouse in the background. Attendees at the meeting gave rave reviews of the club's bunker restorations, conditions, and design. In the photo above, host superintendent at Norfolk G.C., **Jason Adams**, holds court with fellow superintendents on the first tee.

Letter from Dean Cleve Willis affirms commitment to construction of UMass turf research building

The following is a letter to GCSANE from Cleve Willis, Dean, UMass-Amherst College of Natural Resources & Environment:

I am pleased to share some exciting news. This past month, I committed the necessary funds to hire a site design consultant to finalize the plans for the construction of a new building at the

commitments, now is the time for all our alumni and friends to stand up and be counted.

Paul Miller has agreed to organize a campaign structure to establish lines of communication with you, and his message follows my own. Working together, we will revitalize our turf program and build

on the tradition of teaching and research that has been the hallmark of our efforts for the past seventy-five years. Ours will be a success that we will all share in, and I am grateful for the participation and support of the Golf Course Superintendents of New England.

UMASS NEWS

Umass-Amherst turf facility in South Deerfield. In short, we are fully committed to the final steps for the construction of a new multi-use turf facility at our turf plots, a long-identified need of our turf program. This is a significant investment at a critical time, and we expect to have a building that we can move into by the end of 2004.

Once the site design process is finalized, the project will be put out to bid. The building will be approximately 3,000 square feet, roughly half of which will be open space to store and repair equipment. The building will also contain a laboratory to wash, sort and dry plant materials, a conference room, office and bathrooms. This facility will enable our turf team to collaborate on a number of research projects aimed at solving problems faced by the turf industry in New England and beyond.

I am grateful to the many individuals and professional associations who have already committed gifts and pledges. It is because of their leadership efforts that we are able to move forward at this time, despite challenging economic circumstances. Success follows success, and this building is a critical first step in our overall investment in the UMass Amherst turf program. Faculty recruitment is our next critical initiative, and our new facility will be a great help in attracting top candidates to our turf team.

Throughout the winter, our campaign efforts will raise the additional funds necessary to complete the building fund and to establish an endowment to operate the new facility. This is where we need you! While many have already made their

. . . and GCSANE's Paul Miller outlines fund raising campaign

The following is a letter from Paul Miller, CGCS, Nashawtuc Country Club:

This last year has been a very active year of research, design, and positioning on the journey to finally achieve our goal of a new research facility at the turf plots at UMass. We are better than half way there in funding and now need all the alumni to help.

GCSANE NEWS

It is golf that will ultimately benefit from this facility's research findings, and as stewards of the game we now have a responsibility to our alma mater to help fund this ambitious project. It is with that goal in mind that we will be approaching you for help. You have just read the Dean's report on our progress to date, and the following plan of attack is how we will organize ourselves to play a role in the new building.

We have established a "leadership council" of ten industry representatives (all superintendents) who will be meeting later this fall to establish a fund raising approach that will not only include individual gifts but also matching gifts from our golf facilities.

These gifts can be one-time contributions or pledges payable over the next five years. Our council members will be contacting you as the winter unfolds. Please be receptive. They will have options as to how to accomplish our mission when they contact you. This structure is designed to be informal, but will also ensure that we will be effective

at reaching our financial goal. By using this approach we can minimize a lot of mailings and impersonal advances.

This communication marks the start of our campaign, and the following is a list of people who will be contacting you. We will do our best to see to it that you will only be approached by one of the following. Please keep in mind that this is our chance to re-establish UMass Amherst and Stockbridge School as one of the leaders in turf management, and it is also an opportunity to give something back for what our education has given us.

- John Clark
Rochester C.C. 603-332-9170
- Thomas Colombo
The Ridge Club 508-428-7963
- Jim Conant
C.C. of Pittsfield 413-447-8506
- Steve Curry
Berkshire Hills C. C. . . . 413-443-4545
- Greg Grenert
The Samoset Resort 207-594-0825
- Don Hearn
Vesper C. C. 978-453-1231
- Wayne LaCroix
Andover C.C. 978-475-6638
- Ken Lallier
The Quechee Club 802-299-2137
- Jim Medeiros
Wannamoissett C.C. 401-434-8240
- Paul Miller
Nashawtuc C. C. 978-369-7910

DIVOT DRIFT...announcements...educational seminars...job opportunities ...tournament results...and miscellaneous items of interest to the membership.

UMASS NEWS

Umass Extension presents the 8-session *Realities of Organic Lawn and Landscape Care Series*. Green industry professionals will meet increased demand for organic and low impact lawn/landscape care. UMass Extension's Landscape, Nursery, and Urban Forestry and Turf Programs provide knowledge needed to provide healthy, functional, environmentally responsible lawns and landscapes – information such as what works, what doesn't; what information is based on research vs. what is anecdotal; and what are the long/short term impacts of organic programs. Cost: \$90/person/session. Information/registration: www.umassgreeninfo.org/upcoming.html, or call 413-545-0895.

Dec. 1, 2003 (Session 3): *Using Organic and Other Fertilizers Effectively*; location: Amherst, Mass., 10 a.m. - 3 p.m.; Ron Kujawski & Mary Owen, UMass Extension. Plants in undisturbed communities are rarely deficient in nutrients yet plants in managed landscapes typically require additions of nutrients for healthy growth. Reasons will be discussed along with practices to simulate nutrient recycling. Key to these cultural practices is the use of "organic" fertilizers. Definitions, sources, and effective use are among issues presented. ISA, MCA, MCH, & MCLP credit requested.

Pat Daly, who serves on the Turf Advisory Board at UMass, has reported that almost half the funding required for the new turf facility has been raised and the project is moving ahead.

GCSAA NEWS

GCSAA is trying to recruit up to 300 members, 100 more than in previous years, to serve on various committees. Volunteer forms are online at www.GCSAA.org. The deadline is Dec. 1.

Look in your mailbox or e-mail inbox for a postcard from GCSAA Headquarters concerning your voting status. The GCSAA has 3,000 members classified as individual voters, most arrived at that status by default. Individual status means the voter will have to go to the national conference to vote. The postcard requires a response if a member wants individual status. If there is no response they will be assigned to the GCSANE chapter vote. Either way, make sure your vote counts this year so you can support GCSANE's president, Jim Fitzroy, in his run for the GCSAA Board.

GCSANE NEWS

The IPM Council will sponsor IPM workshops in the spring, and is looking for superintendents to be on hand for question & answer sessions. Contact Pat Kriksceonaitis if you can help.

The New England Regional Turf Conference will be March 1-4, in Providence, R.I. Dave Feherty from CBS will be the keynote speaker.

GCSANE raised over \$2000 for the Ouimet Scholarship through sponsorship of Dick Duggan at the Golf-a-thon. GCSANE's total donation to the Ouimet Scholarship Fund will be \$3000.

Ronald P. Dobosz, Jr. will chair this year's GCSANE nominating committee. Others serving include Arthur Silva, CGCS, Robert F. Dirico, CGCS, Ronald W. Kirkman, and Kevin F. Osgood. Any member wishing to serve on the board should contact anyone on the nominating committee.

GCSANE's Annual Christmas Gala is Dec. 12, 2003 at Brae Burn C.C. Cost is \$100 per couple.

The Nor'easter in San Diego will be Thursday, Feb. 12, 2004.

PERSONAL NOTES

Condolences are extended to Dave Barber, whose father passed away.

Condolences are extended to John Eagleston, whose mother passed away.

GOVERNMENT NEWS

Senate bill #320 looks to take 30% of pesticide licensing fees and to raise the tax on fertilizer to fund a non-toxic pest management center at UMass-Lowell. GCSANE opposes this bill. Please contact Pat Kriksceonaitis for more information and to see how you can help.

GOLF RESULTS

Annual 9-Hole Meeting
Norfolk C.C., Norfolk, Mass.
Nov. 3, 2003

Host Superintendent: Jason Adams

1st Gross - 30, Jack Hassett, Mike Cornicelli, Artie Miller, Dick French

1st Net - 25, Bob Healey, Russ Heller, Dave Stowe, Pat Hogan, Ed Downing

2nd Net - 26, Scott McLeod, Alan Vadaia, Jeff Stouffer, Carl Miner

POSITION OPENINGS

Golf Course Superintendent, Willowbend, Mashpee, Mass. Willowbend is a 27-hole, private country club and residential development established on 400 acres of Cape Cod. Willowbend annually hosts the PGA Celebrity Charity Pro-Am Tournament in June. Willowbend is operated by Willowbend Golf Management. The qualified candidate must have a 2 or 4-year degree in turfgrass

management. A minimum of five years of experience as superintendent or assistant is required. Candidate must have or obtain a Mass. Pesticide Applicator License. Salary is commensurate with experience. Benefits include health/dental programs, 401k plan, two weeks paid vacation, uniforms, meal plan, holiday & sick pay, golf privileges, merchandise discounts, and educational assistance. The position is open immediately until filled. Send resume to: Bob St. Thomas, Willowbend, 100 Willowbend Dr., Mashpee, MA 02649.

Tom Irwin, Inc., a distributor of turf management products, is looking for a turf professional to assume consultative sales responsibilities for a territory including Maine and New Hampshire. We are looking for applicants with solid experience as a golf course superintendent and/or assistant who want to pursue the next step of assisting others in maximizing the quality of their turf. This is a full-time position with an attractive compensation and fringe benefit package. Send your resume by mail, fax, or email to: Tom Irwin, Inc., Paul Skafas, Sales VP, 11 A Street, Burlington, MA 01803; Fax: 1-781-273-4804; E-mail: sales@tomirwin.com.

Golf Course Superintendent, Segregansett C.C., Taunton, Mass. Segregansett is a private 18-hole golf course located in southern Massachusetts. The superintendent must possess a strong attention to detail and outstanding management/budgeting skills while maintaining an extremely high standard of maintenance. The minimum requirement is a degree in turfgrass management, agronomy, or horticulture. A minimum of five years of experience as superintendent or assistant is required. Experience in the Northeast U.S. or other cold weather areas is a plus. Commitment to continuing education and professional certification is a plus. Competitive salary range is commensurate with experience and qualifications. Benefits include medical insurance, vehicle, and vacation. Deadline: Dec. 15, 2003. Please send resume and salary requirements to: Chris Ryding, Chairman-Greens, Segregansett C.C., 85 Gulliver Street, Taunton, MA 02780.

Assistant Superintendent, Hopedale C.C., Hopedale, Mass. Hopedale is a semi-private, 9-hole golf course designed in 1953 by Geoffrey Cornish, with bent/poa greens and bent/poa/rye tees. The club is constantly taking on course and infrastructure improvements. Candidates must have an associate of science degree in turf management or related field. Candidates should have leadership skills and be self-motivated. Prior golf course experience is a must. A Mass. or R.I. pesticide license is a plus. Mechanical abilities are also a plus. Salary is commensurate with experience. Benefits include fully paid medical insurance and vacation. Deadline: Dec. 24, 2003. Please send resume to: Tom Albert, Supt., Hopedale C.C., P.O. Box 1186, Douglas, MA 01516.

EPA approves turfgrass fungicide for golf course use

By Michael Boehm & Joseph Rimelspach, Department of Plant Pathology, Ohio State University

Insignia® (chemical name:pyraclostrobin) is a new turfgrass fungicide derived from a natural antifungal substance. It is in the strobilurin chemical family, the same family that contains azoxystrobin (Heritage®) and trifloxystrobin (Compass®). The product is registered by the BASF Corporation and received Federal EPA approval on Oct. 23, 2003. Application for state registrations is underway. Insignia® is a broad-spectrum fungicide labeled for many turfgrass diseases. The product can be used on all turfgrass but is only labeled for golf course sites.

The material is formulated as a water dispersible granule (WG). As with many new materials the recommended rates are low, 0.5 - 0.9 ounces per 1,000 sq. ft. (oz/1000ft²), with a maximum total use of

5.5 oz/1000ft² per year (15 pounds per acre per year). The product is an upward systemic fungicide with activity on a wide range of turfgrass diseases. The label includes these diseases: anthracnose, bentgrass dead spot, brown patch, dollar spot (suppression only), fairy ring, Fusarium patch, gray leaf

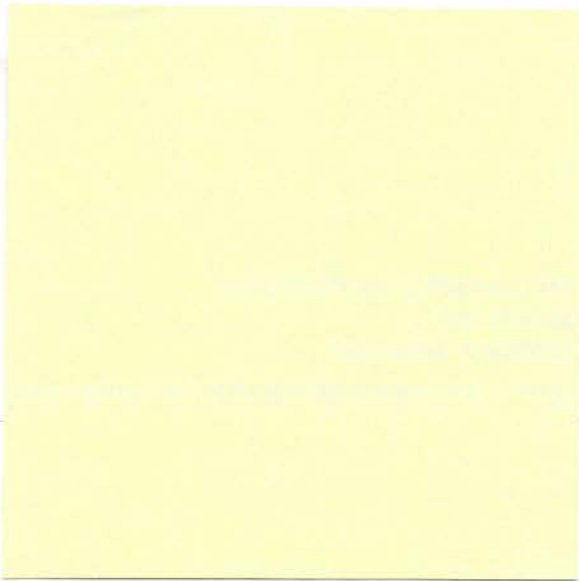
TURF SCIENCE

spot, gray snow mold, leaf spot/melting out, pink patch, pink snow mold, powdery mildew, Pythium blight, rapid blight, red thread, rust, summer patch, and take-all patch. Optimum disease control is achieved when applied preventively but also may be used curatively for some diseases. For highly destructive diseases, preventive applications in conjunction with sound turf management practices is recommended. It is recommended to apply in 2-4 gallons of water per 1000ft² for best results. For most diseases an application time interval

of 14 to 28 days is recommended. See the label for specific information.

This is another fungicide that has great potential but must be used wisely to avoid rapid development of fungicide resistance. Pyraclostrobin (Insignia®) has the same mode of action as the QoI fungicides (strobilurin chemical family, ie: Heritage® and Compass®), so rotate to other chemical families to limit the number and amount of strobilurin chemistry applied to a site. Other families of fungicides to consider are dicarboximides, sterol inhibitors, benzimidazoles, etc. Read the label for additional information about the development of an integrated turfgrass disease management strategy and maximizing fungicide effectiveness.

Studies have been done at OSU in the last several years with Insignia® (also known as BAS 500). In the 2002 OSU trials the material performed well on brown patch, red thread, leaf spot, rust, and pythium.



FIRST CLASS

First Class Mail
U.S. Postage
PAID
Newburyport, MA
Permit No. 61

Return to:
300 Arnold Palmer Boulevard
Norton, MA 02766

