



# THE NEWSLETTER

April 2012

of the **Golf Course Superintendents Association of New England, Inc.**

Sponsors and administrators of the Troll-Dickinson Scholarship Fund – Awarded yearly to deserving Turf Management Students.

**“I miss the technical challenges of the business;  
I don’t miss the complainers and know-it-alls.”**

**An interview of your Association Manager, Retired CGCS Don Hearn**

**By: the Editor**

*A couple years ago I had the opportunity to spend some unexpected quality time with Don in Orlando during a GCSAA National Show. We happened to be on the same flight and while waiting for our luggage he offered me a ride to the hotel. Before I could say anything, he asked if I liked art. Wondering what he was pertaining to I was hesitant to reply, but I did anyways and I told him “Uh, I guess so, it’s art what’s not to like?” That simple statement set me up for a two hour tour of the Orlando Art Museum with your now Association Manager, Don Hearn. He had already planned on going, it was on the way to the airport so why the heck not. So here I am, in sunny Orlando, young and dumb, single (I think), ready to hit the warm air, ready to slug some beverages back, ready to meet some friends I hadn’t seen in awhile and now I’m inside of a building with Don Hearn looking at walls and walls of art. Looking back at it now, I wouldn’t have changed a thing and I don’t at all regret going to the art museum that day with Don.*



**Photo showing a very healthy stand of turfgrass in Don Hearn’s office in the William F. Connell Golf House & Museum at TPC Norton, MA.**

As you all know, there was a new hire within our Association over the winter months to replace Sharon Brownell who left graciously to travel the globe with her husband. The search committee received several qualified candidates for the opening. After interviews were conducted they came to

the decision to hire Don Hearn. Why not, right? Who better to manage GCSANE than a 44 year member of GCSANE, Past President of GCSANE, Past President GCSAA, Certified Golf Course Superintendent since 1977 (now retired status), Distinguished Service Award recipient from both GCSANE in 2004 and GCSAA in 2008, past member of the MGA Executive Committee, past member of the Francis Ouimet Scholarship Fund Board of Directors, 25 year member of USGA Green Section Committee, former board member of the Department of Food and Agriculture and has three courses under his belt that bared witness to his management and leadership skills. Don was the Golf Course Superintendent at Lexington Golf Course during the early 1970s, Weston Golf Club from 1972-2000 and most recently Vesper Country Club from 2001 to 2006.

Don grew up in Woburn Massachusetts; this is where his golf course career began. What started as an innocent gesture to periodically caddy for his father at Woburn Country Club turned into a lifetime career on a golf course. He now lives in Chelmsford and has been there for the past 42 years with his wife Joan. They will be celebrating their 42<sup>nd</sup> Wedding Anniversary this coming October. He has a son, Donnie who is a designer living in New York City and a daughter named Kristen who is a nurse residing in Somerville, MA.

I asked Don if he was hesitant to apply for the position as Association Manager, as it is more of a desk job rather than out in the trenches like he is use to. “I’ve always liked the paper side of the business so I wasn’t at all hesitant.” This will be a continuation for him seeing how he attends almost every meeting and stays very involved in the association, even after he was let go from his last place of employment. I am sure you have all seen Don at a meeting and thought “Man, would I still go to a meeting even though I was

*continued on page 4*

## GCSANE BOARD OF DIRECTORS

### PRESIDENT

Jason S. Adams  
27 Cherry Street, Wrentham, MA 02093  
781-828-6540 Fax: 781-326-3801  
E-mail: jadams@bluehillcc.com  
Blue Hill Country Club

### VICE PRESIDENT

Michael W. Stachowicz  
68 Westfield Road, Westwood, MA 02090  
781-326-7860 Fax: 781-326-0664  
E-mail: Mstach@dedhamclub.org  
Dedham Country & Polo Club

### TREASURER

Mark Gagne  
233 Baker Street, Walpole, MA 02081  
508-668-3859 Fax: 508-668-9969  
E-mail: Mgagne@walpolecc.org  
Walpole Country Club

### SECRETARY

Michael Luccini, CGCS  
10 Griffin Road, Franklin, MA 02038  
508-520-3615 Fax: 508-528-1885  
E-mail: Mluccini@verizon.net  
Franklin Country Club

### TRUSTEE (Membership)

Richard T. Gagnon  
85 Gulliver Street, Taunton, MA 02780  
508-823-0466 Fax 508-823-3915  
E-mail: scturf@hotmail.com  
Segregansett Country Club

### TRUSTEE (Government Relations)

J. Michael Rose  
181 Winter Street, Belmont, MA 02478  
617-484-5360 Fax 617-484-6613  
E-mail: mrose@belmontcc.org  
Belmont Country Club

### TRUSTEE (Scholarship & Benevolence)

David Stowe, CGCS  
30 Western Avenue, Natick, MA 01760  
617-789-4631 Fax 617-789-4631  
E-mail: Newtonmaint@aol.com  
Newton Commonwealth Golf Club

### AFFILIATE TRUSTEE

Mark Casey  
890 East Street, Tewksbury, MA 01876  
617-990-2427 Fax: 978-409-0445  
E-mail: mcasey@mte.us.com  
MTE - Turf Equipment Solutions

### FINANCE CHAIRMAN

Scott Lagana, CGCS  
840 Oak Hill Road, Fitchburg, MA 01420  
978-342-6451 Fax 978-345-2044  
E-mail: slagana@oakhillcc.org  
Oak Hill Country Club

### GOLF CHAIRMAN

Carl Miner  
357 W. Squantum Street, North Quincy, MA 02171  
617-328-0277 Fax: 617-328-9479  
E-mail: Carlpminer@gmail.com  
Presidents Golf Club

### EDUCATION CHAIRMAN

David W. Johnson  
179 Fletcher Street, Whitinsville, MA 01588  
508-234-2533 Fax: 508-234-2533  
E-mail: djohnson.wgc@verizon.net  
Whitinsville Golf Club

### NEWSLETTER CHAIRMAN

Jeffrey Urquhart  
70 Green Lodge Street, Canton, MA 02021  
781-828-2953 Fax 781-828-3220  
E-mail: jmartin101@gmail.com  
Milton-Hoosic Club

### PAST PRESIDENT

Patrick J. Daly, CGCS  
P.O. Box 2284, Framingham, MA 01703-2284  
508-872-9790 Fax: 508-872-5393  
E-mail: Pat@framinghamcc.com  
Framingham Country Club

### ASSOCIATION MANAGER

Donald E. Hearn, CGCS  
300 Arnold Palmer Blvd., Norton, MA 02766  
774-430-9040 Fax: 774-430-9101  
E-mail: donhearn@gcsane.org

### BUSINESS MANAGER, THE NEWSLETTER

Julie Heston  
Phone: (401) 934-7660 Email: jheston@verizon.net

GCSANE Headquarters  
300 Arnold Palmer Blvd., Norton, MA 02766  
Tel: (774) 430-9040 Fax: (774) 430-9101  
Web Site: www.gcsane.org

Any opinions expressed in this publication are those of the author and/or person quoted, and may not represent the position of GCSANE. Information contained in this publication may be used freely, in whole or in part, without special permission as long as the true context is maintained. We would appreciate a credit line.

# GCSAA honors Certified Golf Course Superintendents

The Golf Course Superintendents Association of America (GCSAA) recognizes 44 members who have celebrated 25 years as certified golf course superintendents (CGCS). The title "CGCS," after a superintendent's name stands for Certified Golf Course Superintendent, which recognizes the achievement of high standards of professionalism through education and experience.

GCSAA certified superintendents honored for 25 years of certification include:

- Robert U. Alonzi, CGCS, Greenwich, Conn.
- Fredrick S. Biggers, CGCS, Stoney Creek GC at Wintergreen Resort, Nellysford, Va.
- L. Randall Brehmer, CGCS, The Fort Golf Resort, Indianapolis, Ind.
- Peter D. Burnham, CGCS, Heritage Village Country Club, Southbury, Conn.
- Dale F. Conzelmann, CGCS, Tiburon Golf Club, Naples, Fla.
- Kevin D'Amico, CGCS, Westwoods Country Club, Farmington, Conn.
- Corey B. Eastwood, CGCS, Stockton, Calif.
- Jeff Elliott, CGCS, Agrium Advanced Technologies, Centennial, Colo.
- Roger H. Frazier, CGCS, Cattails at Meadowview, Kingsport, Tenn.
- Mark G. Fuller, CGCS, The Connecticut Golf Club, Easton, Conn.
- Lawrence E. Hergott, CGCS, City of Columbus Parks & Recreation, Columbus, Neb.
- Alan D. Hess, CGCS, Augusta Pines Golf Club, Spring, Texas
- Mike Hulteen, CGCS, Salina Country Club, Salina, Kan.
- Keith A. Ihms, CGCS, Country Club of Little Rock, Little Rock, Ark.
- Kenneth B. Ingram, CGCS, Silver Spring, Md.
- Joseph A. Kennedy, Jr., CGCS, Vanderbilt Legends Club, Franklin, Tenn.
- Les Kennedy, Jr., CGCS, Blind Brook Club, Purchase, N.Y.
- Michael J. Kosak, CGCS, Petaluma, Calif.
- George Kruzick, CGCS, City of Fort Worth Golf Division, Fort Worth, Texas
- Robert A. Langley, CGCS, Floratine Products Group, Inc., Collierville, Tenn.
- Harold J. Loke, CGCS, Bent Creek Country Club, Lititz, Pa.
- Howard H. Lott, CGCS, Stonewall Resort, Walkersville, W.Va.
- Douglas R. Mahal, CGCS, The Jewel Golf Club, Lake City, Minn.
- William Martin, CGCS, Diamond Valley Country Club, Hemet, Calif.
- Timothy M. McAvoy, CGCS, Hollow Golf Club, Branchburg, N.J.
- Barry W. Mueller, CGCS, San Geronimo Country Club, San Geronimo, Calif.
- Gary Myers, CGCS, Walt Disney World Golf Courses, Orlando, Fla.
- John M. Napier, CGCS, Stanley Municipal Golf Course, New Britain, Conn.
- Lawrence J. Pakkala, CGCS, Norwalk, Conn.
- Charles T. Passios, CGCS, Golf Club of Cape Cod, North Falmouth, Mass.
- Dan E. Rackliffe, CGCS, Longshore Club Park, Westport, Conn.
- Peter Rappoccio, Jr., CGCS, Silver Spring Country Club, Ridgefield, Conn.
- Joel A. Ratcliff, CGCS, Floratine Products Group, Inc., Myrtle Beach, S.C.
- Mark A. Richard, CGCS, Kirkbrae Country Club, Lincoln, R.I.
- William D. Shrum, CGCS, Shooting Star, Wilson, Wyo.
- Michael Swing, CGCS, Visalia Country Club, Visalia, Calif.
- Donald J. Tolson, CGCS, Stock Farm Club, Hamilton, Mont.
- Craig J. Vigen, CGCS, Ferguson Waterworks, Fargo, N.D.
- Dale E. Walters, CGCS, Moorings Country Club, Naples, Fla.

*Continued on page 5*



# Thoughts From Your Association Manager

In late March club officials, superintendents, golf professionals, club managers and interested observers of the course management side of the golf business attended a seminar held at the Blue Hill Country Club. The seminar, sponsored by the Massachusetts Golf Association and co-sponsored by the Golf Course Superintendents Association of New England was a tremendous success. The MGA did a wonderful job coordinating the registration process, both online and at Blue Hill. The MGA also served as hosts for the speakers and made all the attendees feel welcome.

The person who planted the seed for the event is Peter Costello, long time green chairman at Cohasset Golf Club and current member of the MGA's Executive Committee. Peter kicked off the day with his opening remarks and humorous weaving of personal experiences as a green chairman, club member and association volunteer. He was very candid describing how golfers are demanding better conditions rather than accepting the conditions they find when playing a course. He also noted the skills required to provide conditions unimaginable twenty-five years ago. In addition to having the necessary technical training, one of the most important skills he noted is the ability to communicate.

Tom Bagley, a member of the MGA's Executive Committee, served as the moderator for a panel of experts consisting of Dave Oatis from the USGA's Green Section and GCSA of New England members Jason Adams, Scott

Lagana, Glen Misiaszek and Bill Spence. The question and answer format was well received and allowed for questions from the attendees.



**Tom Bagley served as moderator for the panel of experts including Dave Oatis, Jason Adams, Scott Lagana, Glen Misiaszek and Bill Spence**

*continued on page 6*



*If your goal is to produce*  
**CHAMPIONSHIP**  
PLAYING CONDITIONS  
**EVERY DAY,**  
*You Are Not Alone*

We offer you the soil testing, the analysis, the range of turf management products and the depth of support that no one else can match. Because it's not just about selling you supplies. Its about supplying you with everything you need to be successful. *With Tom Irwin, you're not alone.*

Call Fred Murray at **(800) 582-5959** to be connected to the Tom Irwin advisor who can help you realize your goals.



not currently employed in the turf business?" That must have been a major role in the decision making process that landed him the job. We need someone that was fully dedicated to the growth and prosperity of the Association, and Don is the man.



*The following are some questions that read much better if I don't get in between my question and his answer. I apologize for and accept any assumptions of laziness from the simplicity of cut and paste.*

**Do you enjoy your current position? Compared to growing grass.** I absolutely love what I'm doing with the Association. Compared to being a practicing golf course superintendent, I miss the technical aspect of the business and the beauty of the course. It might sound crazy, but watching the spray patterns of a well designed irrigation system, the sound of water spilling into a catch basin from a newly installed drainage line, monitoring weather from a satellite receiver and planning programs and schedules based on what it was showing were some of the things that made the job exciting and enjoyable.

I don't think I'm much different from other superintendents. If I had to do it over - what would I do? I'd be a golf course superintendent. I like to think I wouldn't be as naive as I was when I was younger. But, the reality is that's part of being young and at the time I didn't have a clue how naive I really was.

**Do you have plans of growing the association? Pointing us in the right direction somehow?** I don't have a written plan for the growth of the Association. I don't have a specific goal of number of new Members, Affiliates or Friends of the Association I think we should have in the future. But, I'll be trying to grow the Association and increase participation by the members. I'm still getting myself established to where I'm comfortable with all aspects of the Association. As a past president and active member I can relate to our members in a way others who don't have my background may find difficult. Of course, there are areas in which I have weaknesses. But, just like any job, I'm learning the ropes and have conquered some of what has challenged me. I'll probably be guilty of trying to project myself into the thought process of why the Board does some things in a way I wouldn't

*continued on page 5*



**"The Golf House is a great set up for us."**

**FIGHT SOIL BORNE DISEASES FUSARIUM PYTHIUM ERADICATE BACTERIAL LEAF SPOT**

**COMPANION**  
LIQUID BIOLOGICAL FUNGICIDE

Go Beyond Chemical Fungicides

**Contact US**

For More Information Call Today!  
(800) 648-7626  
[www.GrowthProducts.com](http://www.GrowthProducts.com)

**GROWTH PRODUCTS**

A Broad-Spectrum Biological Fungicide for Soil Borne and Foliar Diseases

- Acts as a Plant Growth Promoting Rhizobacterium (PGPR) that stimulates better rooting and better overall growth.
- Is an important tool in Disease Resistance Management Program, helping to prevent pathogens from building a resistance to chemical fungicides.



agree with. But, I also know, as a friend of mine has said more than a few times, "There's nothing more past than a past president." I had my turn and I'm sure if I could do it over there would be some decisions I'd make differently. So I keep that in mind when decisions are made.

I'll also be visiting with superintendents, and others, as the season goes on. I'll be trying to inform those who are members about what the Association can do for them and what they can do for the Association. I've always enjoyed visiting with others and there's no need for me to stop doing it now.

---

*So will GCSANE reach the "Next Level" with the new hire? To use terminology that we'd relate to, did we just inherit a roller that will increase our green speeds ten fold, a new mower that will allow us to cut the greens much lower or a new machine that will allow us cut labor costs in half? I think time will tell. Don will be and already is a great asset to the Association from the Board level to the vast membership and beyond. Please use him as a tool for you, the member, to make your experience with GCSANE a valuable one for your career, social and personal life. ❖*

- Jerry A. Webb, CGCS, Vintage Golf Course, Monticello, Minn.
- Timothy R. Willard, CGCS, Frankfort Country Club, Frankfort, Ky.
- Mark J. Woodward, CGCS, Mark Woodward & Assoc., Mesa, Ariz.
- Bruce J. Worzella, CGCS, West Bend Country Club, West Bend, Wis.
- John M. Yakubisin, CGCS, Rolling Rock Club, Ligonier, Pa.

Over "Twenty-five percent of GCSAA's Class A members have achieved the highest level of recognition through the CGCS professional designation," said GCSAA President Sandy G. Queen, who has also held the CGCS designation for 25-plus years. "This program requires their demonstration of a higher set of competencies in golf course management through testing and practical application. Employers can feel confident they employ a career professional who has made a strong commitment to professional development."

Maintaining certified status requires renewal every five years after the initial date of certification. To fulfill certification renewal requirements, a candidate must participate in 150 hours of continuing education and professional development. Two-hundred thirty-eight GCSAA certified superintendents renewed their certification in 2011. ❖

Source: GCSAA Press Release

The advertisement features a background image of a golf course with a green and a sand trap under a blue sky with white clouds. A white flag on a pole is positioned on the left, displaying a green logo and the text "read custom soils".

**TEE TO GREEN  
SOIL SOLUTIONS**

- USGA Green Construction
- USGA Bunker Sand
- Tee Mix Materials
- USGA Fairway Topdressing Sands

read custom soils  
888-475-5526

As members of the GCSA of New England we're fortunate to have such a good relationship with the MGA. I've spoken with my associates from other parts of the country and few enjoy such a positive and supportive connection with their respective state golf association. Joe Sprague, the MGA's Executive Director has always been interested in our business and worked on a golf course during his younger years. Joe's experiences mowing greens, raking bunkers and doing the typical tasks of a summer employee has given him an appreciation for the maintenance side of the industry. Scott Whitcomb, the MGA's Director of Field Operations, also spent time on the maintenance side of our industry and has a keen appreciation for what we do and how we do it. Scott is also a member of the GCSA of New England and the GCSAA and usually attends the GIS each year.

Last month Mike Luccini and I traveled to GCSAA Headquarters in Lawrence, Kansas to attend two days of meetings with our national staff, program presenters and other chapter staff and board members from all parts of the country and Canada. In addition to meeting others in the profession and industry and sharing experiences, we had the opportunity to spend time learning more about what our national association does to promote all of us in the business of golf. Concepts of leadership were discussed. Questions were answered and ideas were picked up. Now that I'm in a different part of our business my emphasis is much less on the technical side and more on the administrative. My tools are now the computer (not a new tool), the copy machine, the postage meter, the printer, a monitor screen and the accounting program. Do I miss being a golf course superintendent? Well, I'm still a golf course superintendent, just a non-practicing one.

I know this has been a very busy time for all of you, but this is something you should be paying attention to. On January 1, 2013, all public safety and business industrial land mobile radio systems operating in the 150-512 MHz radio bands must cease operating using at least 25 kHz efficiency technology. After January 1, 2013, licensees not operating at 12.5 KHz efficiency will be in violation of the rules and subject to FCC enforcement action. I suggest you contact your irrigation supplier sales representatives and the company that services your mobile radios to see what it is you'll need to do before the deadline to keep your communications running smoothly. You can find more information about this by searching VHF/UHF narrowbanding information in your browser.

This is the time of year when statements are delivered and letters are sent to those who haven't paid their dues. It's not a pleasant thing to do, but it's necessary to conduct the business of the Association. All of us have had some humps to get over and paying dues might have been one of them. If you're having a problem, or there's a reason you'll be paying late, let me know. The GCSA of New England is your Association and we want to keep you as a member. But, keep in mind if your dues are not paid by June 1, you'll be dropped from the Association. ❖

Don Hearn,  
Association Manager



Kevin Doyle at left, GCSAA's Northeast Regional Representative and Mike Luccini with the sculpture Old Tom Morris outside GCSAA Headquarters in Lawrence Kansas. The bronze sculpture is the creation of a golf course superintendent! Brad Pearson from Nebraska.



For golf course construction, renovation and repairs.

**Bluegrass, Ryegrass, Fine Fescue Blends, Short Cut avail. Bentgrass & Bentgrass Blends**



\*Penncross      \*A1 & A4  
\*Penntrio        \*3 Way Blend

**Pallets/Big Rolls.  
Sod handler Del.  
Roll Out Service.  
Over 40 years of  
turf production.**

**Deliveries Monday through Saturday**

**CALL TOLL FREE  
1-800-556-6985  
See our web site  
www.tuckahoeturf.com**



# Nematodes on Golf Greens

By Robert Wick, University of Massachusetts, Amherst

Nematodes are relatively small invertebrate animals that are especially common in soils and aquatic environments. They range in size from 100 µm to 30 feet in length. The largest nematode parasitizes whales. Most of the nematode species are characterized as “free-living” meaning that they are not dependant on a parasitic life style. Free-living nematodes forage for microorganisms in the soil and water, and some attack other nematodes. Approximately 10% of nematode species are parasites of animals including humans. Birds, fish, mammals, worms, etc. are common hosts of nematodes. About 15% of described nematodes are plant parasites. Most plant pathogenic nematodes are 0.5 to 4 mm in length, and somewhat more slender than a human hair. Probably all plants with root systems are parasitized by plant parasitic nematodes. Generally, significant damage to plants occurs only in agricultural environments and only when nematode populations are relatively high.

Plant parasitic nematodes have a protractible hollow or grooved spear (stylet) in their head which they use to puncture plant cells and withdraw the contents. Plant parasitic nematodes can be grouped by their mode of feeding. Those that remain outside of the plant and puncture the root cells with their stylets are called ectoparasites. Some ectoparasites have short stylets and only puncture the epidermal (surface) cells; those with long stylets penetrate more deeply into the root. Endoparasites enter into the plant tissue. Some endoparasites remain in one place and feed and others migrate through the tissues. Endoparasites do much more damage to plant tissues than ectoparasites. Some nematodes have a combination of ectoparasitic and endoparasitic feeding habits.

## Names of Nematodes

Common Name	Scientific Name	Feeding Mode
Ring	<i>Criconemella</i> and others	Ectoparasite
Stunt	<i>Tylenchorhynchus</i>	Ectoparasite
Lance	<i>Hoplolaimus</i>	Ectoparasite/Endoparasite
Spiral	<i>Helicotylenchus</i>	Ectoparasite
Root-knot	<i>Meloidogyne</i>	Endoparasite
Needle	<i>Longidorus</i>	Ectoparasite
Cyst	<i>Heterodera</i>	Endoparasite
Pin	<i>Tylenchus</i>	Ectoparasite
Lesion	<i>Pratylenchus</i>	Endoparasite
Sheath	<i>Hemicycliophora</i>	Ectoparasite
Stubby Root	<i>Trichodorus, Paratrichodorus</i>	Ectoparasite
Dagger	<i>Xiphinema</i>	Ectoparasite

## Nematodes that Parasitize Turfgrasses

In the Northeastern United States, the most common plant parasitic nematodes in turfgrasses are listed in the table above. The nematodes are more or less ranked by approximately how frequently they are encountered in turfgrasses. Ring, stunt, spiral and lance are the most common.

Golf greens provide an ideal environment for nematodes. Greens provide the nematodes with a uniform host with a long growing season. The soil is 75 to 95% sand which provides ideal pore spaces for oxygen, water and nematode mobility, and the greens are watered frequently. Nematodes are aquatic animals and need moisture for mobility. Golf greens can have some of the highest populations of nematodes found in agricultural soils.

## Descriptions of selected plant parasitic nematodes commonly found in turfgrasses

Measurements of nematodes are more conveniently expressed in millimeters rather than inches. There are 254 millimeters (mm) in one inch.

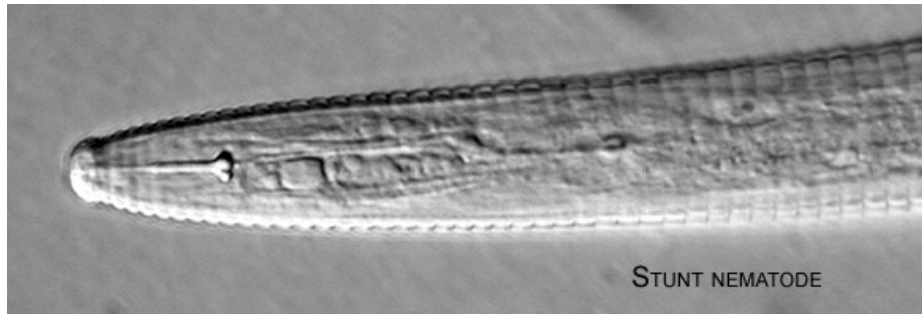
**Ring nematodes** are very common, relatively small (0.5 to 1 mm), stout ectoparasitic nematodes that are named for the distinct ring-like ornamentation of their cuticle. Ring nematodes are common in turfgrasses but are not very pathogenic. Populations of a thousand per 100 cc of soil can be found in relatively healthy turf. In New England, the threshold level is 1500/100 cc of soil. This figure may underestimate their pathogenicity to turf. Ring nematodes are not very mobile and they tend to have a very clumped distribution in soils. A composite soil sample that results in an average of 1500/100 cc means that there are hot spots of much higher populations.

**Stunt nematodes** are common, small (1 mm long) slender ectoparasites of grasses and other plants. They feed primarily on epidermal cells and root hairs. High populations of stunt and lance nematodes are commonly associated with decline of turfgrass in putting greens. New England threshold levels are 800/100 cc of soil but visible damage would not be expected at this level unless several other stresses are present.

*continued on page 8*

## Nematodes - continued from page 7

**Lance nematodes** are common, robust, moderately large nematodes (1-2 mm) that feed ectoparasitically and endoparasitically on turfgrass roots. High populations of lance and stunt are commonly associated with decline of turf in putting greens. Because lance nematodes can move into the roots and cause considerable damage, threshold levels are lower than for stunt nematodes; 400/100 cc.



**Root-knot nematodes** are endoparasitic and are probably the most important nematode world-wide with respect to crop losses in agriculture. They are named after the galls they produce when they infect roots. Root-knot nematodes that infect turfgrasses don't infect other hosts. Rather than distinctive galls that other root-knot nematode produces, the grass root-knot nematode produces swollen roots.

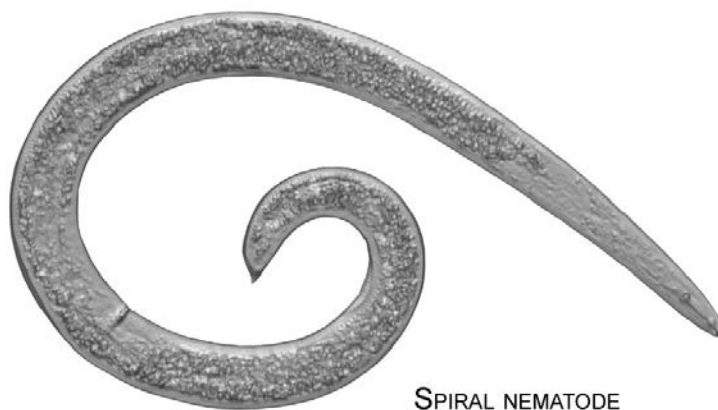
It is difficult to determine the potential disease pressure from soil assays. When the juvenile root-knot hatches from the egg, it enters into a root where it remains for its entire life. In New England, the best time to assess the infection potential of root-knot nematodes is in the spring, as soon as the ground thaws, or perhaps mid-April. Once they move into the root, they are safe from toxicants applied to the soil. A soil sample taken in July can show a very low population of juveniles in the soil and yet the grass may have a very significant problem with root-knot. For this reason, any indication of the presence of root-knot nematodes during the summer should be reevaluated the following spring.

**Spiral nematodes** are named for their propensity to coil into a spiral shape. They are a little more robust than stunt nematodes and up to 1.2 mm in length. Spiral nematodes feed on a wide range of hosts besides grasses but do not appear to be overly damaging to turf. Threshold levels for New England are 1,500/100 cc.

**Needle nematodes** are very long nematodes, up to 5 mm in length. This ectoparasite has a very long stylet and tends to feed on root meristems resulting in swelling of the root tip. Occasionally they are found above the threshold of 100/100 cc of soil. This threshold may underestimate their pathogenicity to turf; in corn seedlings, 10/100 cc of soil are considered damaging. As few as 30 needle nematodes/100 cc of soil can prevent turfgrass seedling establishment.

## Threshold Levels for Turfgrass Nematodes

Nematode populations should be evaluated in context with past and prevailing circumstances such as: species and numbers of nematodes present, the depth of soil the sample was taken, species composition of grasses, depth of root system, soil texture, symptoms, extent of damage, and presence of other stresses to the turf. Threshold levels (the nematode population levels which justify the implementation of control measures), are dependent on these variables. At this time there is very little experimental data to establish threshold levels for golf greens in the northeast. The numbers listed below are based on information gleaned from experience as well as from case-history information and survey results compiled in the northeast. They are to serve as a guide only.



continued on page 9



---

**Threshold levels for nematodes that parasitize turfgrasses**

<b>Common Name</b>	<b>New England*</b>	<b>Other**</b>
Ring	1500	1500
Stunt	800	300
Lance	400	150
Spiral	1500	600
Needle	100	--
Root-knot	500	100
Cyst	500	--
Lesion	100	150
Sheath	200	200
Stubby Root	100	100
Sting	--	20
Dagger	--	200

---

\*Developed by Robert Wick, PhD, University of Massachusetts. These threshold levels are based on field observations and laboratory assays from the New England region. Extenuating circumstance such as geographic location, method of sample collection, assay methods, host, and prevailing environmental conditions, can affect the interpretation of threshold levels.

\*\*From: Turfgrass Trends, Oct 1995. Eric Nelson, PhD, Cornell University.

---

**Symptoms and Diagnosis**

Nematodes injure turfgrass roots by either feeding on, or by burrowing through tissues. Depending on the host and the nematode involved, symptoms on roots include: inhibition of root elongation, swollen tips, galls, lesions, and shortened stubby roots. In most cases root symptoms are not obvious. Symptoms occurring above-ground result from root dysfunction and are not unique to nematodes. Patchy areas of wilting, thinning and decline occur where nematode populations are excessively high. Above-ground symptoms are of little value in diagnosing nematode problems in turf. An accurate assessment of the pathogenic potential of nematodes can only be determined by a nematode assay.

**Collection of soil samples**

Nematode populations are unequally distributed in soil so they are most accurately estimated with a composite sample. Use a ¾ to 1 inch diameter soil probe, or something similar, and sample to a depth of four inches throughout the site. This depth is a compromise but represents the population distribution of different species fairly well. After removing the soil core, tear the top ½ inch of turf and thatch off of the core. Fill the hole with dry top dressing leaving a ½ space and replace the turf plug.

If a portion of the turf appears unhealthy, collect 15 to 25 subsamples from throughout the affected area and bulk them as one sample. For comparison, a composite sample should also be taken from an adjacent, healthy appearing area. A cup-cutter sample taken within the declining turf is acceptable but a composite sample is preferred. ❖

**Send soil samples to: Robert Wick, Department of Applied Biology and Ecology, 270 Stockbridge Rd, Fernald Hall, University of Massachusetts, Amherst MA 01003. There is a \$75 fee per sample.**

**Tel (413) 545-1045, email: [rwick@pltpath.umass.edu](mailto:rwick@pltpath.umass.edu)**

**<http://extension.umass.edu/turf/>**



**FOR IMMEDIATE RELEASE**  
*May 1, 2012*

**CONTACT:** Joshua Thines  
585-334-0100, ext. 1124  
jthines@mte.us.com

**Tewksbury, MA: MTE Turf Equipment Solutions moves into new and improved Tewksbury location**  
MTE Turf Equipment Solutions has relocated to the Boston, MA suburb of Tewksbury, just north of their original shop.

“We’re excited to be moving our Boston operation into a larger space that will accommodate the needs of our loyal New England customers,” said Tom Houseknecht, President of MTE. “In the near future we’re hoping to create a retail space here as well, so you’ll really be able to get familiar with our new equipment.”

The new address is 890 East St. (rear), Tewksbury, MA 01876. Customers can also access the entrance via Lumber Lane. The location is a half-mile from the Route 93 Dascomb Rd. exit. The direct **phone number is 978-654-4240**. The new **fax number is 978-654-4256**.

MTE, Inc. is well-known by golf courses and municipalities throughout New England as a longtime Jacobsen dealer. This spring the company is also introducing the Mahindra “Max” line of sub-compact tractors. MTE is headquartered in Rochester, NY, with another sales and service operation in the Albany, NY area. They can be contacted toll-free at 888-708-5296. ❖

---

## **Growth Products Introduces BioNutrients™ for Fairways, Sports Turf, & Lawn Care**

WHITE PLAINS, NY — Growth Products’ newly released BioNutrients™ 8-0-9 is a 100% organic biostimulant and soil conditioner. Designed for golf fairways, sports turf, and lawn care, BioNutrients™ is a dry concentrate packaged in easy-to-use 8 ounce packs. Fully soluble in water, BioNutrients™ is a “no mess, no measure” way to build turf and soil health.

BioNutrients can be used in a wide variety of turf applications to revitalize soils and neutralize soil salts, to promote faster rooting and deeper turf roots, and to improve turf color and make turf better able to withstand environmental and disease stresses.

These improvements derive from the dry soluble’s high concentration of natural L-amino acids, humic acids, kelp extracts, and other carbon-rich molecules that sustain the powerful microbial growth unleashed by BioNutrients’ proprietary mix of wild yeast and four species of beneficial rhizosphere bacillus – *B. subtilis*, *B. licheniformis*, *B. amylolique*, and *B. pumilis*.

Applied monthly throughout the growing season, BioNutrients is an easy, cost-effective and environmentally friendly way to improve soil conditions and to promote turf health and stress resistance. Manufactured in the USA and backed with Growth Products’ results-driven record of excellence, BioNutrients is an approved USDA Certified BioBased Product. ❖

### **About Growth Products, Ltd.:**

*Growth Products, Ltd., founded in 1984, is an industry leader in providing technologically advanced and environmentally friendly fertilizers, biological fungicides, natural organics, and chelated micronutrients. Its innovative products have been extensively tested and are used in 27 countries world-wide.*

**Contact Information:** Deena Marie Ceru, Marketing & Advertising Coordinator Telephone: 1-800-648-7626  
Growth Products, Ltd., 80 Lafayette Ave, White Plains, NY 10603 Email: [dceru@growthproducts.com](mailto:dceru@growthproducts.com)



THE UNIVERSITY OF CONNECTICUT INVITES YOU TO THE



**University of Connecticut**  
College of Agriculture and Natural Resources



# 3RD BIENNIAL UCONN TURFGRASS FIELD DAY SAVE THE DATE, JULY 17, 2012

AT THE PLANT SCIENCE RESEARCH AND EDUCATION FACILITY IN STORRS, CONNECTICUT

For more information and to register, visit



[www.turf.uconn.edu/fieldday2012](http://www.turf.uconn.edu/fieldday2012)

The 2012 Turfgrass Field Day at the University of Connecticut offers exciting educational opportunities for turfgrass professionals of all levels.



The date of the Field Day has been selected in order

to provide the best opportunity to view the research plots when they are under the greatest summer stress. Cutting edge research in the areas of lawn care, sports and golf turf management will be presented.

Attendees will have an opportunity to discuss ongoing research and management concerns with the UCONN turf team. In addition to seeing the latest



research results, turfgrass professionals have the opportunity to interact with exhibitors and discuss the latest developments and challenges in the industry.

**AGENDA:**

7:30	Registration opens/ continental breakfast
7:30-8:45	Visit with exhibitors, silent auction opens
8:45-9:00	Welcoming remarks
9:00-11:30	Guided tour of research plots
11:30-12:00	Visit with exhibitors
12:00 - 1:00	Lunch
12:30	Ice cream social with exhibitors in vendor section
1:00- 3:00	Visit with exhibitors
2:00	Silent auction ends
1:30 - 3:00	Afternoon Workshops (Separate registration required)
	• Turfgrass Disease Identification and Management Walking Tour
	• Use of Entomopathogenic Nematodes for Insect Management
	• Managing Weeds in the New (25b) World

**Early registration deadline is July 3, 2012.**



**TURFGRASS SCIENCE PROGRAM | DEPARTMENT OF PLANT SCIENCE AND LANDSCAPE ARCHITECTURE**

***DIVOT DRIFT... announcements ... educational seminars ... job opportunities ...tournament results...and miscellaneous items of interest to the membership.***

## **WELCOME NEW MEMBERS**

- Chad Hall, Asst. Superintendent, Bass Rocks Golf Club, Gloucester, MA
- John Ponti, Superintendent, Nehoiden Golf Club, Wellesley, MA
- Teddy Norman, Student, UMass, Stockbridge School of Agriculture, Amherst, MA

## **ANNOUNCEMENTS**

- Our condolences go out to Tim O'Neill and family on the passing of Tim's father, Vincent O'Neill, who passed away on March 2, 2012.
- Our condolences are extended to Sean Moran and family on the passing of Sean's father, Peter Moran, who passed away on March 3, 2012.

As in the past, *The Newsletter* continues to invite Affiliate members to submit a press release about new personnel, new products or a company bio. We will print each and every release **free of charge**. This is a great way to advertise for free. Who said nothing in this world is free? Free advertising to better your company, wow what an offer.

Jeff Urquhart, Editor

## **S&B Tournament**

**SAVE THE DATE**  
**MONDAY JUNE 25, 2012**

The 20th Annual S&B Tournament will be held at the Dedham Country & Polo Club.

This year's event will honor the memory of David Comee, the long time Superintendent of the Winchendon School Golf Club. David passed away tragically last October at the age of 60.

## **AFFILIATE SURVEY UPDATE**

The Affiliate Survey results are in and are under review by Mark Casey and the Board. I will work with them to present the results in the next Newsletter. Thanks to all that participated.



**GCSANE Offers**  
**Website Banner advertising at**  
**[www.gcsane.org](http://www.gcsane.org)**

**The price is \$500 for one year which will be re-occurring annually from your first billing unless otherwise specified.**

**For more information, please contact Jeff Urquhart at 781-828-2953 or [jmartin101@gmail.com](mailto:jmartin101@gmail.com)**



# Please Patronize these FRIENDS of the ASSOCIATION

Page 1

## **A.A. Will Materials Corp.**

198 Washington St., Stoughton, MA 02072-1748  
Root zone mixes, divot mixes, topdressing blends, bunker sands,  
cart path mixes, bridging stone, & hardscape supplies.  
Rob Fitzpatrick - (800) 4-AA-WILL  
[www.aawillmaterials.com](http://www.aawillmaterials.com)

## **Agresource, Inc.**

100 Main St., Amesbury, MA 01913  
Tim Gould, Guy Travers (800) 313-3320, (978) 388-5110

## **Allen's Seed Store, Inc.**

693 S. County Trail, Exeter, RI 02822  
Specializing in quality seed and related golf course maintenance  
supplies.  
Gregg Allen - (800) 527-3898 Michelle Maltais - (401) 835-0287

## **The Andersons Technologies, Inc.**

26 Waite Ave., S. Hadley, MA 01075  
Manufacturer of fertilizer & control products.  
Rick Forni - (413) 534-8896

## **Atlantic Golf and Turf**

9 Industrial Boulevard, Turners Falls, MA 01376  
Specializing in agronomy through the distribution of fertilizer, seed  
and chemicals throughout New England.  
Chris Cowan (413) 530-5040, Gregg Mackintosh (508) 525-5142,  
Scott Mackintosh CPAg (774) 551-6083

## **Atlantic Silica, Inc.**

P.O. Box 10, Enfield N.S. B2T 1C6 Canada (902) 883-3020

## **A-OK Turf Equipment Inc.**

1357 Main St., Coventry, RI 02816-8435  
Lastec, Tycrop, Blec, Wiedenmann, Therrien, Graden, Sweep  
& Fill, Baroness, and used equipment.  
Mike Cornicelli - (401) 826-2584

## **Barenbrug USA**

*Great in Grass* 166 Juniper Drive, North Kingstown, RI 02852  
Bruce Chapman, Territory Manager (401) 578-2300

## **BASF Turf & Ornamental**

47 Falmouth Rd., Longmeadow, MA 01106  
"We don't make the turf. We make it better."  
John Bresnahan - (413) 565-5340

## **BACKED by BAYER**

Building on an already solid foundation of proven products to help  
you succeed. Brian Giblin 508-439-9809 [brian@bayer.com](mailto:brian@bayer.com)  
[www.backedbybayer.com](http://www.backedbybayer.com)

## **The Borden Company**

114 Summer St., Maynard, MA 01754  
Bulk limestone dealer. Jack Borden - (978) 897-2571

## **Boston Irrigation Supply Co. (BISCO)**

60 Stergis Way, Dedham, MA 02026  
Distributor, irrigation supplies & accessories, featuring Rain Bird.  
Andrew Langlois, Jay Anderson III, Dan Fuller, Jeff Brown, Greg  
Hennessy, Chris Russo (800) 225-8006

## **The Cardinals, Inc.**

166 River Rd., PO Box 520, Unionville, CT 06085  
Golf course and landscape supplies.  
John Callahan, Dennis Friel - (800) 861-6256

## **Cavicchio Landscape Supply, Inc.**

110 Codjer Lane, Sudbury, MA 01776  
Annuals, perennials, garden mums, ground covers, loam, & mulch.  
Darren Young - (978) 443-7177

## **Charles C. Hart Seed Co., Inc.**

304 Main St., Wethersfield, CT 06109  
Authorized distributor for Bayer, Syngenta, Grigg Bros., Foliar Fer-  
tilizer, & Aquatrols.  
Roy Sibley, Dick Gurski, Robin Hayes - (800) 326-HART

## **Country Club Enterprises**

PO Box 670, 29 Tobey Rd., W. Wareham, MA 02676  
Club Car golf cars, Carryall utility vehicles.  
Dave Farina, Keith Tortorella, Mike Turner (800) 662-2585

## **DAF Services, Inc.**

20 Lawnacre Rd., Windsor Locks, CT 06096  
Irrigation pumps - sales & service; northeast warehouse/distributor  
for ISCO HDPE pipe & fittings. Richard Young - (860) 623-5207

## **DGM Systems**

153A Foster Center Road, Foster, RI 02825  
Your New England specialty products distributor: Reelcraft, POK,  
Allen, Kenyon, Echo, Carhartt Office - (401) 647-0550  
Manny Mihailides - (401) 524-8999  
David Mihailides - (401) 742-1177

## **DHT Golf Services**

8 Meadow Park Road, Plymouth, MA 02360  
Serving the GCSANE for over 20 years. Planning to proposal to  
completion. Golf construction and irrigation consulting.  
Emergency irrigation repairs. Dahn Tibbett (20 year member),  
Jaime Tibbett 508-746-3222 DHTGOLF.COM

## **G. Fialkosky Lawn Sprinklers**

PO Box 600645., Newton, MA 02460  
Irrigation services to golf courses throughout New England.  
Gary Fialkosky - (617) 293-8632  
[www.garyfialkoskylawnsprinklers.com](http://www.garyfialkoskylawnsprinklers.com)

## **Gustavo Preston Service Company**

10 Kidder Road, Unit 8, Chelmsford, MA 01824  
Flowtronex irrigation pumps - sales and service. Spring start ups,  
winterization and 24 hour emergency service for all irrigation  
pumps. Ed Ceaser (978) 250-3333

## **Harrell's**

19 Technology Drive, Auburn, MA 01501  
Turf & ornamental supplies. Chuck Bramhall, Mike Kroian,  
Mike Nagle, Jim Wierzbicki - (800) 228-6656

## **International Golf Construction Co.**

5 Purcell Rd., Arlington, MA 02474  
Golf course construction. Antonios Paganis - (781) 648-2351;  
(508) 428-3022

## **Irrigation Management & Services**

21 Lakeview Ave., Natick, MA 01760  
Irrigation consultation, design, and system evaluation.  
Bob Healey, ASIC, CID - (508) 653-0625

continued on next page

# Please Patronize these FRIENDS of the ASSOCIATION

## **John Deere Golf**

Offering our customers the most complete line of products, service and expertise in the industry. Tom Rowell, Ren Wilkes, John Winskowicz - (978) 471-8351  
Ron Tumiski 1-800-321-5325 x6219

## **Ken Jones Tire, Inc.**

71-73 Chandler St., Worcester, MA 01613  
Distributor of tires for lawn & garden, trucks, cars, industrial equipment, and golf cars. Gerry Jones - (508) 755-5255

## **Larchmont Engineering & Irrigation**

11 Larchmont Lane, Lexington, MA 02420-4483  
Kevin Rudat - (781) 862-2550

## **Lazaro's Golf Course Supplies & Accessories**

dba Hammond Paint and Chemical Co., Inc.  
738 Main St., Suite 223, Waltham, MA 02154  
Complete line of golf course accessories; Standard, Par Aide, Eagle One. Joe Lazaro - (781) 647-3361

## **Maher Services**

71 Concord Street, N. Reading, MA 01864  
Specializes in Water well drilling, pump sales, pump repair, well redevelopment and preventative maintenance  
Peter Maher cell: (781) 953-8167 or (978) 664-WELL (9355)  
Fax (978) 664-9356 [www.maherserv.com](http://www.maherserv.com)

## **MAS Golf Course Construction LLC**

60 Hope Ave., Ste. 107, Waltham, MA 02453  
Fulfilling all your renovation and construction needs.  
[www.masgolfconstruction.com](http://www.masgolfconstruction.com) Matthew Staffieri (508) 243-2443

## **Maltby & Company**

30 Old Page Street, P.O. Box 364, Stoughton, MA 02072  
Provides expert tree pruning, tree removal and tree planting services. Our two other divisions include Natural Tree & Lawn Care, which treats for winter moth caterpillars, ticks and mosquitoes etc. Forest Floor recycling manufactures color enhanced mulch and natural composted leaf mulch. For more information or to speak with one of our arborists please call Bill Maltby at 781-344-3900

## **Mayer Tree Service**

9 Scots Way, Essex, MA 01929  
Your one source tree care company. Our certified arborists specialize in plant health care as well as tree pruning and technical removals. Jeff Thomas (978) 768-7232

## **McNulty Construction Corp.**

P. O. Box 3218, Framingham, MA 01705  
Asphalt paving of cart paths, walkways, parking areas; imprinted asphalt. John McNulty - (508) 879-8875

## **Miller Golf Construction**

P.O. Box 1008, Essex, MA 01929  
Golf course construction & renovation.  
Jonathon Miller - (978) 768-6600

## **MTE ~ Turf Equipment Solutions \* new Location \***

890 EAST STREET (rear), TEWKSBURY, MA 01864  
New and Pre-owned Equipment ; Sales / Parts / Service  
JACOBSEN – TURFCO – SMITHCO – REDEXIM -  
NEARY GRINDERS - BUFFALO TURBINE – TRU TURF –  
GOLF LIFT – STANDARD & PAR-AID – SDI – BROYHILL –  
RYAN – HUSQVARNA- GRAVELY – LELY - VICON  
**NEW Office#: 978-654-4240** or Mark Casey 617-990-2427

## **Mungeam Cornish Golf Design, Inc.**

207 N. Main St., Uxbridge, MA 01569  
Golf course architects. (508) 278-3407

## **New England Lawn & Golf**

15 Del Prete Drive, Hingham, MA 02043  
Distributor of Express Dual and Anglemaster Speed Roller and Converted Organics a liquid compost & fertilizer from food waste  
John Lenhart - (781) 561-5687

## **New England Specialty Soils**

435 Lancaster, Street, Leominster, MA 01453  
1mm. Top Dressing Sand, High Density Bunker Sand, Rootzone Mixes, Tee Blends, Divot Mixes, Bridging Stone, Cart Path Mix, Infield Mixes, Inorganic Amendments, SLOPE LOCK Soil.  
Ed Downing - 978-230-2300 Rick Moulton (978) 230-2244  
[www.nesoils.com](http://www.nesoils.com)

## **New England Turf**

P.O. Box 777, West Kingston, RI 02892  
Phone: 800-451-2900 or Ernie Ketchum 508-364-4428  
Website: [www.newenglandturf.com](http://www.newenglandturf.com)

## **NMP Golf Construction Corp.**

25 Bishop Ave., Ste. A-2, Williston, VT 05495  
Golf course construction. Mario Poirier - (888) 707-0787

## **Northeast Golf Company**

*Golf Course Architectural/Consultation Services*  
118 Beauchamp Drive, Saunderstown, RI 02874  
Robert McNeil (401) 667-4994

## **North Shore Hydroseeding**

20 Wenham St., Danvers, MA 01923  
Hydroseeding and erosion control services.  
Brian King - (978) 762-8737 [www.nshydro.com](http://www.nshydro.com)

## **On-Course Golf Inc., Design/Build**

16 Maple Street, Acton, MA 01720  
We serve all your remodeling and renovation needs. You can trust your project with us! We make you look good!  
Sean Hanley (978) 337-6661 [www.on-coursegolf.com](http://www.on-coursegolf.com)

## **Partac Peat Corporation**

Kelsey Park, Great Meadows, NJ 07838  
Heat treated topdressing, golf hole targets, turf blankets, other specialty golf supplies. Jim Kelsey - (800) 247-2326

## **Putnam Pipe Corp.**

90 Elm St., Hopkinton, MA 01748  
Underground water, sewer, & drain pipe and fittings-Erosion and sediment control material. 24-hour service.  
David Putnam, Eli Potty - (508) 435-3090

## **Read Custom Soils**

125 Turnpike St., Canton, MA 02021  
Custom soil blending, top dressing sands, Root zone blends, "early green" black sand, divot & cart path mixes.  
Terry Driscoll, Garrett Whitney – (888) 475-5526

*continued on next page*



## ***Please Patronize these FRIENDS of the ASSOCIATION***

### **Slater Farms** (Holliston Sand Products)

P. O. Box 1168, Tift Rd., Slatersville, RI 02876  
USGA recommended topdressing, root-zone mixes, compost, pea stone, angular & traditional bunker sand.  
Bob Chalifour, CGCS (Ret.) - (401) 766-5010 Cell: 860-908-7414

### **Sodco Inc.**

P. O. Box 2, Slocum, RI 02877  
Bluegrass/Fescue, Bluegrass/Rye, Bluegrass/Fescue/Rye, Bentgrass. Sean Moran, Pat Hogan - (800) 341-6900

### **Southwest Putting Greens of Boston**

P.O. Box 827, Westford, MA 01886  
Synthetic turf, tee lines, practice greens, outdoor and indoor practice facilities. Douglas Preston - (978) 250-5996

### **Stumps Are Us Inc.**

Manchester, NH  
Professional stump chipping service.  
Brendan McQuade - (603) 625-4165

### **Syngenta Professional Products**

111 Craigmere Circle, Avon, CT 06001  
Melissa Gugliotti (860) 221-5712

### **Tom Irwin Inc.**

11 A St., Burlington, MA 01803  
Turf management products. Paul Skafas, Rob Larson, Chris Petersen, Greg Misodoulakis, Mike DeForge, Brian Luccini, Jeff Houde, Fred Murray (800) 582-5959

### **Tree Tech, Inc.**

6 Springbrook Rd., Foxboro, MA 02035  
Foxboro, Wellesley, Fall River Andy Felix - (508) 543-5644

### **Tuckahoe Turf Farms, Inc.**

P. O. Box 167, Wood River Junction, RI 02894  
Joe Farina (774) 260-0093

### **Turf Products Corp.**

157 Moody Rd., Enfield, CT 06082  
Distributors of Toro irrigation & maintenance equipment and other golf-related products. Tim Berge, Dave Beauvais, Nat Binns, Andy Malone - (800) 243-4355

### **Valent Professional Products**

294 Archer Street, Fall River, MA 02720  
*Valent Has Turf Covered* Jim Santoro - 508-207-2094

### **Valley Green**

14 Copper Beech Drive, Kingston, MA 02364  
Phone: 413-533-0726 Fax: 413-533-0792  
"Wholesale distributor of turf products"

### **Winding Brook Turf Farm**

Wethersfield, CT 06109  
Scott Wheeler, Mike Krudwig, Sam Morgan - (800) 243-0232

# NEW Lower Rates to Help Make Advertising in The Newsletter More Budget Conscious

## THE NEWSLETTER 2012 DISPLAY ADVERTISING ORDER FORM

Company Name: \_\_\_\_\_

Address: \_\_\_\_\_

Contact Name: \_\_\_\_\_ Phone # \_\_\_\_\_

Issues (List month and total number): \_\_\_\_\_

Amount of Check: \_\_\_\_\_ (Made payable to "GCSANE")

<b>Member Rates:</b>	<b>Monthly Rate</b>	<b>4 Times Per Yr. (Save 5%)</b>	<b>6 Times Per Yr. (Save 10%)</b>	<b>8 Times Per Yr. (Save 10%)</b>	<b>Annual Rate (Save 15%)</b>
----------------------	-------------------------	--	---	---	---------------------------------------

1/4 page (vertical; 3.75" wide x 5" deep)    \$ 90.00    \$ 342.00    \$ 486.00    \$ 648.00    \$ 918.00

1/2 page (horizontal; 7.5" wide x 5" deep)    \$150.00    \$ 570.00    \$ 810.00    \$1080.00    \$1530.00

Full Page (vertical; 7.5" wide x 10" deep)    \$200.00    \$ 760.00    \$1080.00    \$1440.00    \$2040.00

**Non-Member Rates:** \*All payments must be received in full before the ad appears in The Newsletter.

1/4 page (vertical; 3.75" wide x 5" deep)    \$120.00    \$456.00    \$648.00    \$ 864.00    \$1224.00

1/2 page (horizontal; 7.5" wide x 5" deep)    \$180.00    \$684.00    \$972.00    \$1296.00    \$1836.00

Full Page (vertical; 7.5" wide x 10" deep)    \$240.00    \$912.00    \$1296.00    \$1728.00    \$2448.00

**\*DEADLINE for ads: The first of the month for that month's issue.**

### Ad Preparation Specifications:

**File Specifications for Ads Supplied in Digital Format:** Ads may be sent either by email or by mailing a CD to the address below. Formats preferred are .GIF; .JPG and .PDF. Ads can also be accepted in Microsoft Word or Microsoft Publisher files. Full color is available with all ads.

**Advertising Design Services:** Design services are available by request and consultation and will be billed separately.

**Send all Newsletter ads to:**

Julie Heston

36 Elisha Mathewson Road, N. Scituate, RI 02857

Phone: 401-934-7660 / Fax: 401-934-9901

jheston@verizon.net