



# THE NEWSLETTER

August 2015

of the **Golf Course Superintendents Association of New England, Inc.**

Sponsors and administrators of the Troll-Dickinson Scholarship Fund – Awarded yearly to deserving Turf Management Students.

## President's Message

Dear fellow GCSANE members:

Summer is beginning to wind down and hopefully the recent cool weather stretch is welcome relief for you all. The longer term forecast calls for another brief heat spell before we enter the fall golf season which, by the way, looks to be extremely action packed here in GCSANE land. More on this later.

The August monthly meeting was held at Wayland Country Club with GCSANE member Harris Schnare our host for the day. In short, Harris and his team had the course in outstanding condition despite a late breaking curveball thrown at them just days before our event. A passing weather cell dumped a brief but intense hail and wind storm on the Wayland Country Club property over just a 20 minute period. Speaking with club owner Bob Quirk before the meeting, Bob proudly mentioned the maintenance staff quickly organized to restore the course to normal after the storm passed. Some rolling, topdressing, and needle tine aeration were performed to help alleviate thousands of small dents left behind on the greens by the hail. A tremendous effort was put forth to clean up all the leaves and debris, leaving the course in pristine condition for our event. I even noticed the flower beds were perfect! Once again, a big high five goes out to the entire Wayland CC staff who also had the nerve to spoil us with a steak and lobster dinner after the event.

Operationally we continue to exceed expectations and I anticipate a favorable financial position for us when the fiscal year ends. As usual, the "Dons" (D'Errico and Hearn) have kept a close eye on our finances and have put us in position to meet all of our annual financial goals, and then some.

The first pass of our bylaws overhaul has been completed and is currently being reviewed by counsel. As I mentioned in earlier communications, we'll pass the proposed bylaw changes over to GCSAA after counsel review to make sure we conform with their standards. Once we hear back from GCSAA we're planning to hold a meeting for the entire GCSANE membership, possibly with a December time frame. Given the scope and number of proposed changes the board feels it's appropriate to hold an informational meeting prior to asking for a vote. As always, we'll make it well worth your time and effort to attend.

Our annual Scholarship and Benevolence tournament to be held at Vesper Country Club is just over one month away. Invitations have been sent to all members. This year's event features a \$10,000 hole in one contest and the chance to play one of the premier clubs in the northeast. More importantly, all event profits will go towards our S and B fund, which was established to aid our members and their families in times of need and also help offset higher education expenses. I'm looking forward to seeing many of you there.



Best Regards,  
Michael D. Luccini CGCS  
GCSANE President



#### GCSANE BOARD OF DIRECTORS

##### PRESIDENT

Michael Luccini, CGCS  
Franklin Country Club  
672 E. Central Street, Franklin, MA 02038  
508-528-6110 Fax: 508-528-1885  
Email: Mluccini@franklincc.com

##### VICE PRESIDENT

David W. Johnson  
Wianno Club  
155 West Street, Osterville, MA 02655  
508-428-6981  
Email: Djohnson.wgc@gmail.com

##### TREASURER

Jason VanBuskirk  
Stow Acres Country Club  
58 Randall Road, Stow, MA 01775  
978-568-1100 ext. 121  
Email: jvanbuskirk@stowacres.com

##### SECRETARY

Jeffrey Urquhart  
Milton Hoosic Club  
70 Green Lodge Street, Canton, MA 02021  
781-828-2953 Fax 781-828-3220  
Email: jmartin101@gmail.com

##### TRUSTEE - Membership

Kris Armando  
Sassamon Trace Golf Course  
233 South Main Street, Natick, MA 01760  
508-745-8555  
Email: karmando8@gmail.com

##### TRUSTEE - Scholarship & Benevolence

David Stowe, CGCS  
Newton Commonwealth Golf Club  
212 Kenrick Street, Newton, MA 02458  
617-789-4631  
Email: Newtonmaint@aol.com

##### TRUSTEE - Government Relations

Peter J. Rappocciio, CGCS  
Concord Country Club  
246 ORNAC, Concord, MA 01742  
978-371-1089 Fax: 978-369-7231  
Email: gcs@concordcc.org

##### TRUSTEE - Affiliate

Ed Downing  
New England Specialty Soils  
435 Lancaster Street, Leominster, MA 01453  
978-230-2300  
Email: eddowning@me.com

##### FINANCE CHAIRMAN

Donald D'Errico  
Spring Valley Country Club  
25 Tiot Street, Sharon, MA 02067  
508-530-2113  
Email: donny@springvalleycountryclub.com

##### GOLF CHAIRMAN

John Ponti  
Nehoiden Golf Club  
105 Central Street, Wellesley, MA 02481  
781-283-3240  
Email: jponti@wellesley.edu

##### EDUCATION CHAIRMAN

Brian F. Skinner, CGCS  
Bellevue Golf Club  
320 Porter Street, PO Box 760661  
Melrose, MA 02176  
781-665-3147 Fax 781-665-1019  
Email: brianskinner@bellevuegolfclub.com

##### NEWSLETTER CHAIRMAN

Greg Cormier, CGCS  
Nashawtuc Country Club  
1861 Sudbury Road, Concord, MA 01742  
978-369-5704  
Email: gcormier@nashawtuc.com

##### PAST PRESIDENT

Mark Gagne  
Walpole Country Club  
233 Baker Street, Walpole, MA 02081  
508-294-5326 Fax: 508-668-9969  
Email: Mgagne@walpolecc.org

##### ASSOCIATION MANAGER

Donald E. Hearn, CGCS  
300 Arnold Palmer Blvd., Norton, MA 02766  
774-430-9040  
Email: donhearn@gcsane.org

##### BUSINESS MANAGER, THE NEWSLETTER

Julie Heston Phone: (401) 934-7660 Email: jheston@verizon.net

GCSANE Headquarters  
300 Arnold Palmer Blvd., Norton, MA 02766  
Tel: (774) 430-9040 Fax: (774) 430-9101  
Web Site: www.gcsane.org

Any opinions expressed in this publication are those of the author and/or person quoted, and may not represent the position of GCSANE. Information contained in this publication may be used freely, in whole or in part, without special permission as long as the true context is maintained. We would appreciate a credit line.

## Golf Course Superintendents Association of New England 23rd Annual Scholarship and Benevolence Tournament

In memory of  
**Gerry Finn**  
**Joe Rybka**  
**Bob Grant**

**Monday, September 14, 2015**

**Vesper Country Club**

**Host: Steve Hicks**



**Hole #10 Vesper Country Club**

**The registration deadline is 12:00 noon, Thursday, September 9th**

Information about the event can be viewed by [clicking here](#).

To register, please click below.

**[Register Now!](#)**

## Superintendent Profile - Steve Hicks, Vesper Country Club

Stephen Hicks will be hosting the Scholarship and Benevolence Tournament for GCSANE in September at Vesper Country Club. Stephen has been the Golf Course Superintendent at Vesper for the past 3 years. He is originally from Whitefield, NH and now lives in Hudson, NH with his wife Caitlin.

Stephen started his career in the golf industry working summers at the Mount Washington Resort. From there, he attended UMASS Stockbridge and earned a Bachelor's Degree. Throughout his schooling he interned at The Country Club in Brookline, MA and at Oakmont Country Club in Pittsburg, PA.



**Stephen Hicks**

After school Stephen decided to return to Oakmont Country Club to train under Golf Course Superintendent, John Zimmers. Working at one of the top 10 clubs in the country put him on the fast track to becoming a superintendent. During his years at Oakmont, John Zimmers taught him everything he needed to know to become a successful superintendent. Stephen also had the opportunity to help coordinate all of the logistics for the 2007 U.S. Open and the 2010 Women's U.S. Open.

# Wayland Country Club- Host of 2015 GCSANE Individual Championship

By Harris Schnare, Golf Course Superintendent

Wayland Country Club is a daily fee public golf course that was built in 1920 as a 9 hole golf course, the architect is unknown. The Quirk family purchased the golf course in the 1943 and it was soon shut down due to World War Two. In 1946 the course reopened, and in 1953 architect William Mitchell expanded it to 18 holes. Wayland Country Club has been owned and operated by the Quirk family for over 70 years, and for the last 30 years owned by Bob and Tom Quirk of Sudbury.

My educational background includes an associate's degree in turf from the Stockbridge School of Agriculture and a bachelor's degree in plant soil science from the University of Massachusetts Amherst. The most valuable class I took at UMass was Integrated Turf Management with Dr. Pat Vittum. It was the first class that brought superintendents into the classroom who taught us real world golf course problems and scenarios and their approach to tackling these situations. Now, every spring I return as a guest speaker on the topic of Pathways to Success after school in which we talk about the difference between the high end private course world and daily fee public golf operations.

My career began in 2000 at Stow Acres Country Club, I was 13 years old and the course was close enough for me to ride my bike to work. Superintendent Erick Koskinen offered me my first job and helped mentor me into the turf industry. My sophomore year of college I interned at Westchester Country Club in New York. Prepping and hosting a PGA event is a life changing experience and I learned many detail aspects of turf management from my summer at Westchester. I was planning on returning to Westchester the following summer when Jason VanBuskirk from Stow Acres CC offered me an Assistant Superintendents job. I was 21 years old and could not pass up on the opportunity to become an assistant and still be able to finish my senior year of college. I worked as an assistant at Stow Acres until spring of 2012 when I became the Superintendent at Wayland Country Club. I am currently 28 and this is my fourth season at Wayland Country Club. Peter Rappoccio, of Concord Country Club, gave me a wise word of advice when I was first hired,



he told me to “treat every year like it’s your first”. These words have held true and have helped our team at Wayland avoid becoming complacent and continue to improve the golf course every day we arrive to work.

I have worked in both the private and public sectors of golf and I would say that they both have their own unique challenges. The audible calling that occurs daily at a public golf course does help to keep me on my toes, for example, having to prep for a 7 am shotgun while walk-on golfers are teeing off at 4:30 am is a regular occurrence at a public course. The ability to communicate with two golf course owners on upcoming projects and purchases does make getting approval easier than having to convince a board of members. In the public golf course world the budget is revenue driven so when we have a slow spring or extreme weather wipes out play on a typically busy weekend, we sometimes have to become creative with how we will maintain high turf quality standards and continue projects while monitoring the bottom line.

*continued on page 5*



# Thoughts From Your Association Manager

Last month I attended the UMass Turf Research Field Day held at the Joseph Troll Turf Research Center in South Deerfield, MA. The day was devoted to the memory of Dr. Joe Troll, the facility's namesake. Joe passed away June 14, 2015 at the age of 95. To remember Joe, the staff at the facility had brushed a "Thanks Joe!" in the turf area beside the research building. The program included various research programs dealing with efficient irrigation use, chemical and cultural practices for disease management, fairway rolling for dollar spot control, and a very interesting project creating an artificial wetland to cleanse rinse water from spray tank rinsing. These were just a few among many others carried out by the UMass team at the research plots. The photo below shows the "THANKS JOE!" brushed into the turf, the research building and a small portion of the research facility.



photo courtesy of Heather Garvin



from left, Scott Lagana and Kevin Eldridge the MGA's Director of Rules and Competitions

The Massachusetts Golf Association held their 2015 Amateur Championship at the Oak Hill Country Club, July 13 – 17. Scott Lagana, CGCS is the superintendent at Oak Hill. He and his team put in a lot of hours making sure the course was in excellent condition for the event. The MGA staff recognizes the effort required

and is a pleasure to work with. I know they and the superintendents they work with have a very respectful relationship. I also know what the superintendents and their staffs do to prepare for these events and I admire their skills and the dedication required to pull together all the parts that make hosting an MGA event an exciting time for all. The MGA staff devotes considerable time meeting with the club staff and officials to go over all the details of the event to help make sure everyone is on the same page when the event begins. Kevin Eldridge is the main person onsite making decisions that might have an impact on the course maintenance plan, but all who have worked with Kevin have found that he's an extremely reasonable and understanding person. He helps make the superintendents responsibilities go very smoothly.

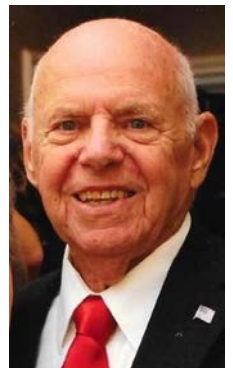
There was a very nice article written about Salem Country Club by Gary Larrabee, the well known and highly regarded golf writer from the North Shore, in the July issue of New England Golf Monthly magazine. In the article he writes about the 2017 USGA Senior Open, the history of the club, the championships held there and the outstanding contributions of Kip Tyler, the long time superintendent at Salem. It was wonderful to see Gary key in on the service that Kip has provided to the membership of Salem. Gary certainly tells it better than I so please [click this link](#) and turn to page 30 to read what he has written about Kip and Salem CC.

Mark Mungeam is another member of the Association who recently received some well-deserved recognition. Mark's work is featured in the July issue of *Golf Course Architecture* magazine. Mark has completed a master plan update and restoration of some features of the North course at Olympia Fields in Chicago. His handiwork has been well received and you can read more about it by [clicking this link](#).

As many know, Jim Beane, a long time member of the Association, passed away July 17, 2015. Jim was an avid supporter of our Association and loved the game of golf.

His close friend and fellow superintendent, Dick Zepp, has captured a snapshot of Jim's life and I've included it below.

The following was written by Dick Zepp, Superintendent at Cyprian Keyes Golf Club, about his friend, Jim Beane:



*Jim Beane joined the U.S. Marine Corps as a teenager and soon was sent to the Korean War. He and 9000 Marines of the 1<sup>st</sup> Division marched 80 miles into North Korea in the worst winter weather in 100 years. They were stopped by 70,000 Chinese soldiers who had managed to infiltrate into North Korea unnoticed. The Marines fought their way 80 miles back to the coast, losing 800 men on the way. About 6000 were wounded or severely frostbitten. Only 2000 men made it back uninjured.*

*One was Private James Beane. Jim later became a bomb disposal expert and served a tour in Viet Nam. After that, he retired with 21 years in the Marine Corps.*

*Jim, his wife Phyllis and sons Jeff and Greg moved to Massachusetts and while looking for work came across an ad in the paper for part-time workers at Mt. Pleasant C.C. He started there in the early 70's and soon was full-time. His great work ethic resulted in a promotion to Assistant Superintendent and then to Superintendent. He attended the Winter School and was Certified in 1982. He retired in 1995 and immediately began working as Construction Superintendent at Cyprian Keyes Golf Club. He retired again after the club opened in 1997. He continued to work part-time but also studied to become a rules official. He started a new career as an official with the NEPGA. He officiated at 60-65 Junior tournaments a year and also served as a starter for the NEPGA major tournaments. Quite a guy—three major careers, two wars and not a scratch on him! ❖*

By Don Hearn

I have been married for almost two years now to my beautiful wife Jenna. Our wedding was on the practice fairway at Wayland Country Club. She really understands the requirements that I have to put in to the golf course and helps in the fall with morning course prep, carts, and picking up course accessories before the snow falls. We have a daughter named Alexa who is almost 6 months old. It is a nice way to unwind after a long day of work being able to hang out with Alexa at night. I also have a 5 year old Australian Shepard named Zoey that comes to work with me every day and helps fend off



the goose population.

Younger people in this industry or people that have been in the same position for many years should wait for the

right superintendent job opening that fits their expectations of course conditions and quality of life. Building a strong network and getting your name into the industry through social media, attending conferences, or supporting your local chapter at meetings or golf tournaments might be a leg up when a new job opening occurs. Working hard and building a positive reputation will help with getting to a superintendent job but the old saying "it's not what

## Moving Forward: Turfgrass Conference & Show 2016

It has now been more than six months since some of us were in Providence hoping to have another successful turfgrass conference like we have become accustomed to. We all know the end of that story and how we limped home afterward. But, time moves on and as we prepare the way for our 19<sup>th</sup> consecutive conference and show we look forward to greater success. Over the past 18 years our show has generated enough funds to support nearly \$2 million in research funding here in New England helping to grow our industry, secure research & educational programs, and fulfill some of the needs of turfgrass management professionals! Our first slogan back in 1998 as we prepared for our first show was "Building Together" and the combined interest of all of New England seemed to fuel the effort at that time. In 2016, with that same excitement we announce that we are still in it together and continue to move forward!

Our 2016 show dates will be February 29<sup>th</sup> -March 3<sup>rd</sup>. Yes, a leap year! As we leap past the disappointment of 2015, we would like to announce a few important marketing messages! First, to all of our 2015 exhibitors, from our Board of Directors, it has been decided to offer each exhibitor up to 50% of the value of your 2015 booth space to be used towards booth purchases for our 2016 show. This offer can be used to purchase up to 50% of each booth for 2016. The board has also agreed to discount any expanded booth space beyond 2015 totals by 25%. This would mean if you purchased 2 booths in 2015 and wish to maintain the same amount of booth space, then the price of each booth for 2016 will be reduced by 50%. If you want to expand your booth space, as an example, from 2 to 4 booths, then you would receive two booths discounted 50% and two booths discounted 25%. We will be happy to answer any questions concerning this policy. We greatly appreciate your support of our show and the industry. Let's look forward to a great event in 2016 together!

We also extend a similar opportunity for attendees who were registered for 2015. Each 2015 registered attendee's company will receive a discount of up to 50% of any conference and show attendee registration fees that can be used towards pre-registration for 2016 not to exceed 50% of the amount paid in 2015. This will be handled by our very capable registration company when you pre-register for 2016

through the online registration process. Sorry, but this does not include seminar registration in 2015 or for 2016. We hope that you will take advantage of your discount and pre-register early for 2016!

You may be wondering how the foundation can afford to do this and not be "scalped" financially. The board had decided early on that hosting a show in January could be risky and so it decided to take out an insurance policy that would cover event cancellation due to inclement weather among other reasons. This policy was designed to cover any revenue loss caused by unforeseen reasons during the show. Though we have been in negotiations with our 2015 show insurance provider since February, we were finally offered a settlement that would cover the discounts in full for exhibitors and attendees that we felt would be fair. The settlement would recuperate all revenue loss and 2016 discounts. This is all we were hoping for and are excited to share with everyone who tried to be with us back in January. If you have any questions, please call my office at 401-841-5490.

Another important announcement we would like to make are some schedule changes to our 4-day event. In 2016, we will no longer offer early morning seminars on the Monday of the show week. Seminars will begin at 1pm Monday afternoon and we will also offer 2 and 4-hour seminars on Tuesday Morning that will conclude at 12noon followed by the USGA Session and the trade show opening. Some have expressed that the event is too long when you come in on Sunday night and leave on Thursday. We hope by condensing the schedule a little attendees will be more likely to participate on Thursday morning. Another small change is the trade show floor will also close 1 hour earlier on Thursday morning at 12 noon. This should help exhibitors and attendees get out on the road earlier, but not reduce trade show time. To make this work, education on Thursday will begin at 8 am. We will continue to tweak things as we go along to try to make the conference and show schedule more attractive for all our attendees and exhibitors. Please stay tuned for more information as we prepare our program and schedule for our 2016 show. The show goes on! And our plans, with your help, are to continue to be the best conference and show on Turf! ❖

Gary J. Sykes, Executive Director

# Total Solutions

For over 40 years, Turf Products continues to be the single source supplier for all your irrigation and turf management equipment, delivering superior quality and unmatched customer service to the golf industry.



**turf products**



From drainage pipe to chainsaws  
TPC can supply all your golf course needs.  
Pond aerators, ball washers, soil sensors and  
lightning detectors are just a few of the  
thousands of items we carry.

**For All Equipment & Irrigation:**  
**PARTS DIRECT: (800) 296-7442**  
*Email: [partsdept@turfproductscorp.com](mailto:partsdept@turfproductscorp.com)*  
**SERVICE DIRECT: (800) 442-9910**  
*Email: [servicedept@turfproductscorp.com](mailto:servicedept@turfproductscorp.com)*  
**MAIN OFFICE: (800) 243-4355**  
**[www.turfproductscorp.com](http://www.turfproductscorp.com)**

# Kevin Doyle - GCSAA Updates



With *GCM*'s July issue featuring a [tremendous article](#) regarding mentorship in golf course management; it gave me a bit of nostalgia for when I started in the industry. I have written about that mentor relationship, and asked you, the reader, to consider reaching out to your mentor to express your gratitude on occasion. There is a lot to be said for the special relationship and the *GCM* article stated those facts very eloquently. While superlatives to those who influence our career may be documented very well, what about the course itself? While it is hard to say that an inanimate object can really teach us anything, does it? Did that first golf course you worked at, the actual golf course, contribute to your future?

The people are often credited for making a house a home, not the structure itself. "Home is where the heart is," and all that jazz. But managing that structure can help the inhabitants create an identity, can't it? With all the hours, sweat and frustration helping to manage a golf facility for the first time, doesn't that course fall into that first "home" category as well? I took time recently to visit my mentor, and we drove around my first home and what a great trip down memory lane.

I had the fortune of working as an assistant for six years at a 39-hole daily fee facility where change was the norm. Today, that is still the case. There are trees that are no longer there, rebuilt holes and greens, and nearly every staff

member was unknown to me, but that was not at all what caught my eye. Nearly every view I had on our ride was of work I had done when I was an assistant there from 1995-2001. Small items like retaining walls and irrigation controllers that I installed are still there; it made me smile. I had argued then for large areas being mowed regularly to be naturalized, to no avail. Now those areas and additional are unmaintained. Bigger picture areas – like the five holes on my course that were rebuilt when I was there – really got my blood flowing. What is now a walk down memory lane brought back the visions of misery lane. Now I see all that went right, but memories only flooded back of what went wrong! Isn't this another highlight of what it means to be a golf course superintendent? Even 20 years later the perfectionist in us still rears its head!

I enjoy hearing about the history of GCSAA members' careers when I attend events, meetings, or conduct site visits. The passion superintendents develop from day one of their career is usually still there and continuing to rise. I feel blessed to be able to take my own career history – my first mentor and first "home" – and tie them into a nice bow. The first golf course I worked at is also where my mentor (Andy McHugh) works. I continue to learn from McHugh and lean on him for insights and, of course, laughs. Looking at the

*continued on page 10*

**N.E.S.S.**  
New England  
Specialty Soils

**Ed Downing**  
Cell: 978-230-2300  
email: [ed@nesoils.com](mailto:ed@nesoils.com)  
Office: 978-466-1844  
Fax: 978-466-1882

1mm. & 2mm. Top Dressing Sand  
Rootzone Mixes • HD & Buff Bunker Sand  
Divot Blends • Tee Mixes  
Bridging Stone • Cart Path Mix • Soil Blend

*We will customize blends to meet your specific needs!*

435 Lancaster Street, Leominster, MA 01453

*Providing exceptional service in New England  
and the tri-state area for 25 years.*

## O'CONNOR PUMPS & SERVICES

Golf / Commercial / Agricultural Pumps

We service, sell, and install well pumps, submersible pumps, booster pumps, jet pumps, irrigation pumps, sump pumps, water softeners, iron filters, sediment filters, reverse osmosis, pressure tanks, water holding tanks, and water lines.

[www.oconnorpumps.com](http://www.oconnorpumps.com)

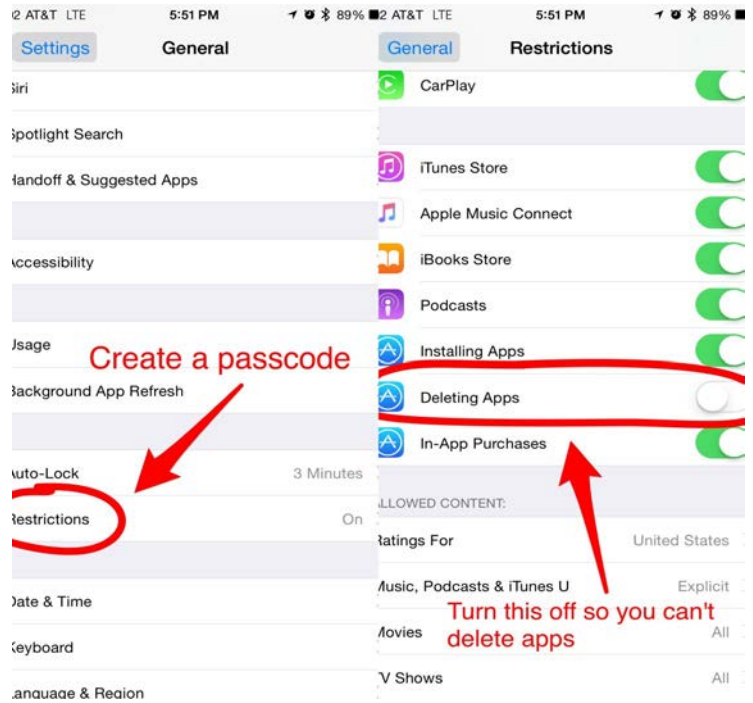
**860-967-3559**

[Joconnor@oconnorpumps.com](mailto:Joconnor@oconnorpumps.com)

# Tech Tip

If you have young kids, then I'm sure you've experienced the moment when you open up your iPad after your child has been playing with it, and you're missing an important app. Yes, you can download the app again for free, but most of the data that was stored in the app is now gone. Well, then there is the suggestion of restoring the iPad from an iCloud backup to retrieve lost data. Seems like a lot of work. Well, you can child-proof your iPad to avoid this exact dilemma. Go into General Settings: Restrictions. Turn Restrictions on and choose a specific passcode that is easy to remember. Once you are in there, disable Deleting Apps. This will prohibit your child from holding down an app icon and deleting the app accidentally. Yes, you will have to go into General Settings: Restrictions to enable Deleting Apps, but it is far better than losing apps or information.

Jason VanBuskirk  
Golf Course Superintendent, Class A  
Stow Acres Country Club



ESTABLISHED IN 1982

DECADES OF EXPERIENCE

## Northeast Golf & Turf Supply

- FAC 79 Approved
- complete irrigation system
- professional grade tools & materials
- custom seed blending
- athletic field supplies

please include us in your next bid!

SEE OUR COMPLETE LINE-UP OF PRODUCTS @ [www.northeastnursery/turf](http://www.northeastnursery/turf)

6 Dearborn Road, Peabody MA 01960 • 978 - 854 - 4414 • [northeastnursery.com](http://northeastnursery.com)





**MTE is your source for all of your turf equipment needs!**



***When Performance Matters.***



**For these and more, visit or call us:**

**118 Lumber Lane  
Tewksbury, MA 01876**

**(978) 654-4240**

**[www.mte.us.com](http://www.mte.us.com)**

golf course still floods me with why's and what-ifs. I don't think those will ever leave me. Maybe that is another trait of a golf course superintendent?

When is the last time you visited the first golf course you worked on, your first "home"? Did you feel differently? Let me know when we meet again!

## **GCSAA Resources and Deadlines**

you **G**et **C**ool **S**tuff from your **A**ssociation **A**lready:

### **GCSAA Insurance benefits you!**

Did you know that GCSAA provides free life insurance and AD&D (accidental death & dismemberment) as a part of your membership? GCSAA's administrator, SRA Benefits, brings members and their families quality insurance programs. For more info click [here](#).

### **Did you miss the Waters Of The US (WOTUS) webcast?**

The WOTUS rule will become effective Aug. 28, 2015. To learn what these changes may mean to you, Diedre Duncan, partner at Hunton & Williams and the legal counsel to the Waters Advocacy Coalition, presented "WOTUS – Implementation of The Final Clean Water Rule," on Tuesday, July 28. This presentation was available free to all interested parties and is archived on GCSAA's website ([linked here](#)).

### **Melrose Leadership Academy applications open through Sept. 15**

The EIFG's Melrose Leadership Academy is now accepting applications for its 2016 class. Applications are due Sept. 15. The Academy is open to Class SM and A members who have been a member for five or more years and have not attended GIS in the last five years. The program provides 20 scholarships every year for GCSAA members to attend the Golf Industry Show. For more info and to apply visit the EIFG website ([linked here](#)).

### **Help recruit new members, get rewarded**

GCSAA's new Member-Get-A-Member program provides members with the opportunity to receive gift certificates for each new member that they recruit. Members will also receive one entry into the grand prize drawing for an all-expenses-paid trip to the 2016 Golf Industry Show in San Diego. Learn more about the program at [www.gcsaa.org/member-get-a-member](http://www.gcsaa.org/member-get-a-member).

### **2015 ELGA applications now open**

You can't win if you don't apply! Take time to submit your GCSAA/Golf Digest Environmental Leaders in Golf Awards (ELGA) application before Oct. 1, 2015. Presented in partnership with Syngenta and Rain Bird, the ELGAs recognize superintendents and golf courses for their commitment to environmental stewardship. To make that application, or NOMINATE A WORTHY PEER visit [GCSAA.org](http://GCSAA.org) ([more info here](#)).

### **Great Equipment Managers Deal**

Don't forget to sign up your equipment manager for this limited opportunity to enjoy full, complimentary membership in 2015. In February, GCSAA members approved the new membership classification, and equipment managers can now take advantage of benefits and resources available to GCSAA members, including new education opportunities tailored specifically for equipment managers. [Sign up your equipment manager here for free membership through 2015](#)

Again, if I can be of any assistance, please feel free to contact me.

Kevin Doyle  
GCSAA Field Staff  
[kdoyle@gcsaa.org](mailto:kdoyle@gcsaa.org)  
Follow me on Twitter @GCSAA\_NE



**BASF**  
The Chemical Company

Xzemplar fungicide | Pylex herbicide | Lexicon intrinsic brand fungicide

**Pete Jacobson—919-530-9062**  
**[peter.jacobson@basf.com](mailto:peter.jacobson@basf.com)**  
**[www.betterturf.basf.us](http://www.betterturf.basf.us)**



JohnDeere.com/Golf

# There has never been a better time to get on the green.

Call us to demo our full-line of equipment, including our A Model mowers!

Now is the perfect time to see how John Deere Golf can take your course maintenance to a whole new level. From tee to green, we have the machines that have set the benchmark for excellence in the industry. And that's only part of what we have to offer. So call us today for a demo and see firsthand how we can make a difference on your course.



Some of the lightest mowers in their class, our SL PrecisionCut™ and E-Cut Hybrid walk-behinds allow effortless turning and better engagement with the turf.



Our rough, trim and surrounds mowers greatly increase efficiency and trimming capability. From reels to rotary decks, we have you covered in the rough and surrounds.



Our new A-Model PrecisionCut and E-Cut Hybrid Fairway Mowers give you more control and better results, thanks to our revolutionary TechControl display.



[www.LaCorteEquipment.com](http://www.LaCorteEquipment.com)

LaCorte Equipment

522 Edwards Ave / Calverton NY

800-560-3373

# Praise and Recognition Can Go a Long Way

I'm sure all of us know that positive recognition is one of the top human motivators. Who doesn't feel good when they get a pat on the back and a "thanks for a job well done" comment? Sure, you might be embarrassed by the praise but when you're alone and think back to it, there's usually a feeling of pride for carrying out in a positive way, what it was that created the praise.

Obviously, you have to be careful how you give out praise because it could create a situation where others who believe they deserve as much, if not more, recognition could end up creating problems for those receiving it. It's good practice to recognize "the team" for a project done well and equally good practice to recognize the key team members who had a large part in the overall success of the team.

In my opinion it's important to recognize your staff by boasting a bit about who they are, what some of their hobbies are, what they've accomplished, what they contribute to the success of the facility, what some of their duties are, where they received their training, what degrees they possess and anything else you believe will help others realize you've created a talented staff that is skilled with their duties.

When I was a practicing superintendent I tried to recognize employees by sending to each new member of the club's board of directors a bound copy of a document. This document contained past budgets, improvements made, and, most importantly, a listing of each full time employee's skills, background, length of service, current duties and any-

thing else I thought would create interest and open the eyes of those who would otherwise have no idea who these people were.

As a sampling, I once worked with a person who studied music at the Berklee College of Music, played the trombone and managed a college bookstore. Another was a superintendent before working with me and was also a selectman in his hometown. Another was a high school basketball coach. One was instrumental in the establishment of the local equipment technicians association.

I would also submit other information with this packet and had many positive comments and quite a few "jeez, I never knew (fill in the name) had that kind of background." It was an easy way to get some recognition for the staff and help others know the staff had talent outside their field of employment.

I noticed whenever people in other club departments were brought on board there would be an announcement listing their name, past employment, current responsibility at the club and past accomplishments. There's no reason why we shouldn't be doing the same. It goes a long way toward recognizing those responsible for producing a beautiful product. ❖

By Don Hearn

## Friend of the Association Profile— Winterberry Irrigation

Since 2001, Winterberry Irrigation, LLC has been the leading provider of irrigation installation, consultation and service.

Winterberry's licensed and certified irrigation technicians only make recommendations and implement improvements that are good for you, your property, and environment. We are an active partner with the EPA's Water Sense program and our technicians show our commitment to a greener and healthier planet in everything they do.

Our service department audits existing system for efficiencies while our technical team shares information on various species of plants and their watering need so we can make the greenest recommendations possible and implement them for you.

Winterberry Irrigation delivers results that are specific to your property and budget needs!

Getting the job done proficiently and expeditiously is our goal. As such, Winterberry has invested in state of the art equipment. We have implemented a GNSS system paired with AutoCAD software that allows the creation of accurate As-Builts to provide our clients with a precise method of locating all irrigation items on their project. Over 15 years of experience in welding HDPE pipes together, allowing us to install long-lasting irrigation systems for our customers.

Here are some of the services we provide:

- Installation of new irrigation systems
- Refurbishment and extensions of existing systems

- Start-Up and winterization (**scheduling now for this Fall**).
- Irrigation service and repairs
- Pump sales, repairs and maintenance
- Wire tracking
- GPS mapping
- Installation and refurbishment of central controls
- Grounding testing

Winterberry has installed and maintained many irrigation systems. Talk with some of our satisfied customers to hear why they chose Winterberry. Here are few: Golf courses, such as Montaup Country Club in Portsmouth, Rhode Island; Yale Golf Course, New Haven, Connecticut; Keney Golf Course, Hartford, Connecticut.

The Winterberry team provides the best in all irrigation services. We know you have a choice and we are proud you chose us for our irrigation expertise, reliable service, and individual focus. We will work together with you to optimize your irrigation systems, ensure irrigation efficiency, help you to save water, get the most out of your budget dollars, and improve the health of your turf and landscapes. We look forward to working with you to make your turf and landscapes beautiful! Call for a toll free consultation and let us show you we can work together: 860.378.0071.

*This article is being published and submitted by the company's representative.*

# HARTNEY GREYMONT

*...for properties that deserve  
the finest tree, landscaping  
and lawn care.*



*Excellence in arboriculture and  
horticulture since 1938.*

[www.hartney.com](http://www.hartney.com) 781.444.1227



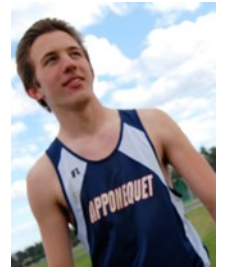
a DAVEY company

## 5th Annual and FINAL GREG'S RUN 5K - October 3, 2015

To benefit the Gregory G. Misodoulakis Memorial Scholarship

Website: [www.gregsrn.org](http://www.gregsrn.org)

E-Mail: [gregsrn10@gmail.com](mailto:gregsrn10@gmail.com)



The 5th Annual and Final *Greg's Run 5K* will be held on Saturday, October 3, 2015 at 10:00 am at Apponequet Regional High School (ARHS). This run/walk event will benefit the **Gregory G. Misodoulakis Memorial Scholarship**, established by his family to honor the memory of 2010 Apponequet Regional High School graduate Gregory Misodoulakis. Greg died unexpectedly a few days prior to beginning his freshmen year at UMass Amherst. The financial and in-kind support of local businesses and community members is vital to ensure the success of this event.

While at ARHS, Greg was an engaged and dedicated student who volunteered many hours on behalf of the Apponequet community. He was a three season athlete – cross country, indoor track and spring track – and served as captain of the winter and spring track teams. Greg's dream was to become a history teacher, and he aspired to live up to the words of the late, great athlete Steve Prefontaine: **"To give anything less than your best is to sacrifice the gift"**.

Since 2011, fourteen scholarships totaling \$14,100 have been awarded to Apponequet Regional High School graduates. It is our hope to award Greg's scholarship to deserving ARHS graduating seniors for years to come. Proceeds from this annual 5K fundraising road race will be put towards his scholarship, which is managed by the Community Foundation of Southeastern Massachusetts, a **501(c)(3)** tax exempt public charity.

As stated above, this will be our 5th and FINAL Greg's Run. This decision did not come lightly but with plenty of discussion, tears and reflection. We are so proud of how Greg's scholarship has grown...to the point that it is considered perpetual! The Gregory G. Misodoulakis Memorial Scholarship will continue to award Apponequet senior for DECADES to come. This is all thanks to our Donors and Supporters who have helped us achieve this goal in such a short time.

Please join us in making the 5th Annual and Final *Greg's Run 5K* a memorable event that benefits current and future students of the Free-town and Lakeville communities. Any donations -- monetary, post-race refreshments or raffle prizes -- would be greatly appreciated. Attached you will find information about corporate and individual sponsorship opportunities. All sponsors will be listed according to their sponsorship level on the race webpage [www.gregsrn.org](http://www.gregsrn.org) and will be recognized during race day activities. Sponsors may set up a display table the day of the event and distribute promotional materials (if desired). Sponsors may also display a banner or logo at the event.

**The deadline to guarantee sponsorship recognition on the race website and printed materials is September 20, 2015.**

We are proud to support the **5th Annual *Greg's Run 5k Race*** to benefit **the Gregory G. Misodoulakis Memorial Scholarship**. We are requesting our corporate name on all materials consistent with our sponsorship level below:

- \$200 (corporate name listed on T-Shirt, subject to printing deadline)
- \$100 (corporate name displayed at kilometer marker or water table)
- Friends of Greg (donations under \$100, to be listed on website and noted on Race Day)
- In-Kind Sponsor (raffle prizes, refreshments, other)

Name: \_\_\_\_\_ Phone: \_\_\_\_\_

Company: \_\_\_\_\_ Fax: \_\_\_\_\_

Address: \_\_\_\_\_ Email: \_\_\_\_\_

City: \_\_\_\_\_ State: \_\_\_\_\_ Zip: \_\_\_\_\_

Describe item(s) being donated: \_\_\_\_\_

Approximate value of item donated: \_\_\_\_\_

- Donated item is enclosed       Please have a volunteer pick up our donated item

**The deadline to guarantee sponsorship recognition on the race website and printed materials is September 20, 2015.**  
**Please return this form and make checks payable to GGMMS: Greg's Run, c/o Kristine Donnelly, 19 Brookstone Drive, Lakeville, MA 02347**

**\*Please include your name, company name, address, phone number and email with your donation so that we can give proper recognition to all our sponsors.**

## **ANNOUNCEMENTS**

Our condolences are extended to the Piquette family on the passing of Jim Piquette on July 3, 2015. Jim was a member of the Rhode Island GCSA and Managing Partner of Mulligan's Island, a golf and sports facility in Cranston, Rhode Island. Jim was a long-time superintendent and a friend to many of us in the GCSA of New England.

Our condolences are extended to the Beane family on the passing of Jim Beane on July 17, 2015. Jim was a long time active member of the Association and was a Life Member at the time of his death.

As in the past, *The Newsletter* continues to invite Affiliate members to submit a press release about new personnel, new products or a company bio. We will print each and every release **free of charge**. This is a great way to advertise for free. Who said nothing in this world is free? Free advertising to better your company, wow what an offer.

Congratulations to Sodco, working in conjunction with the RI DEM & RI Turfgrass Foundation, who recently completed the RI DEM Sustainable Turf Management Program. Sodco became Green Certified on June 22, 2015. This certification program is similar to the RI DEM Green Golf Certification Program but is focused on farms instead of golf courses.



### **Hold the date! - October 17, 2015 - Homecoming Weekend**

On October 17, we will host an open house for Stockbridge School of Agriculture alumni. The day will begin with a tour of our newly renovated Paige Laboratory, with a chance to meet members of our faculty in their research laboratories. I am sure that you'll be excited by their outstanding work and enthusiasm for their research.

After the tour, relax under our tent and listen to some wonderful local music. Willie Crosby, an alum and our instructor for mushroom culture, will give an enlightening talk on growing mushrooms.

We'll also treat you to a spectacular farm-to-table luncheon, with vegetables from our Student Farm, and you'll have ample opportunity to enjoy the company of fellow Stockbridge School of Agriculture alums.

In the afternoon, attend the homecoming football game with plenty of time to tailgate. If you prefer, student farmers will provide tours of our Agricultural Learning Center just north of campus. You also can partake of the many other homecoming activities - or just walk around the UMass campus during one of the prettiest times of the year.

Please join us. Campus will be alive with activity, and if you haven't been to UMass in a number of years, this is your chance to see how your alma mater has grown!

Please look out for future notices; you will be able to register in August.

#### **Wesley Autio**

Director & Professor -Stockbridge School of Agriculture  
Univ. of Massachusetts Amherst - 205 Paige Laboratory

## **A NOTE OF THANKS**

*I want to send my heart-felt thanks to all my husbands' past students and colleagues who upon his passing sent letters, mass cards and money to the Joseph Troll Turf Research Fund at UMass.*

*It has been 30 years since Joe retired and it means so much to me that you still remember him. Joe was proud of his family and often spoke of his wonderful career which included teaching over 1000 students. He would always say, "My students made me who I am today."*

*Your thoughtfulness has been a great comfort to me.*

*Thank you all, and as Joe would say, stay healthy.*

*Lonnie Troll*



### **GCSANE Offers Website Banner advertising at [www.gcsane.org](http://www.gcsane.org)**

**The price is \$500 for one year which will be re-occurring annually from your first billing unless otherwise specified.**

**For more information, please contact Kris Armando  
at 508-745-8555 or [karmando8@gmail.com](mailto:karmando8@gmail.com)**

# Please Patronize these FRIENDS of the ASSOCIATION

Page 1

## **Agresource, Inc.**

100 Main St., Amesbury, MA 01913  
Quality Compost, Soil & Mulch.  
Dave Harding office: (978) 388-5110 cell: (978) 904-1203  
[www.agresourceinc.com](http://www.agresourceinc.com)

## **Allen's Seed**

693 S. County Trail, Exeter, RI 02822  
Specializing in quality seed, fertilizer, chemicals, and related golf course maintenance supplies.  
Peter Lund (401) 474-8171  
[www.allensseed.com](http://www.allensseed.com)

## **Atlantic Golf and Turf**

9 Industrial Boulevard, Turners Falls, MA 01376  
Specializing in agronomy through the distribution of fertilizer, seed and chemicals throughout New England.  
Chris Cowan (413) 530-5040, Scott Mackintosh CPAg (774) 551-6083, Michelle Maltais (401) 835-0287

## **A-OK Turf Equipment Inc.**

1357 Main St., Coventry, RI 02816-8435  
Lastec, Tycrop, Blec, Wiedenmann, Therrien, Graden, Sweep & Fill, Baroness, and used equipment.  
Mike Cornicelli (401) 826-2584

## **Asphalt Services, Inc**

210 New Boston Street, Woburn, MA 01801  
(781) 938-6800  
[www.pavewithasi.com](http://www.pavewithasi.com)  
Providing asphalt paving for golf car paths, walkways and parking lots. We also specialize in drainage, seal coating, crack sealing and line painting.

## **Barenbrug USA**

*Great in Grass*  
10549 Hammond Hill Road, East Otto, NY 14729  
Bruce Chapman, Territory Manager (401) 578-2300

## **BASF Turf & Ornamental**

PO Box 111, West Dennis, MA 02670  
"We don't make the turf. We make it better."  
Pete Jacobson (919) 530-9062 [peter.jacobson@basf.com](mailto:peter.jacobson@basf.com)

## **BACKED by BAYER**

Building on an already solid foundation of proven products to help you succeed. Brian Giblin (508) 439-9809 [brian.giblin@bayer.com](mailto:brian.giblin@bayer.com)  
John Bresnahan (413) 374-4102 [john.bresnahan@bayer.com](mailto:john.bresnahan@bayer.com)  
[www.backedbybayer.com](http://www.backedbybayer.com)

## **Beals and Thomas, Inc.**

144 Turnpike Road, Southborough, MA 01772 and  
32 Court Street, Plymouth, MA 02360  
Civil Engineers - Landscape Architects - Land Surveyors - Planners - Environmental Specialists Contact: Sarah Stearns, 508-366-0560, [sstearns@bealsandthomas.com](mailto:sstearns@bealsandthomas.com)  
Beals and Thomas specializes in golf course site design services including irrigation pond analysis and design, drainage and utility improvements, permitting, hydrogeologic evaluations, construction administration, boundary and topographic surveys, master planning and project design.

## **The Cardinals, Inc.**

166 River Rd., PO Box 520, Unionville, CT 06085  
Golf course and landscape supplies.  
John Callahan (860) 916-3947, Dennis Friel (617) 755-6558

## **Cavicchio Greenhouses, Inc.**

110 Codjer Lane, Sudbury, MA 01776  
Annuals, perennials, garden mums, ground covers, loam, & mulch.  
Darren Young (978) 443-7177

## **Charles C. Hart Seed Co., Inc.**

304 Main St., Wethersfield, CT 06109  
Authorized distributor for Bayer, Syngenta, Grigg Brothers foliar fertilizers, and Aquatrols. Specializing in custom seed blends.  
Robin Hayes (508) 237-2642 Dick Gurski (413) 531-2906  
Chris Bengtson (401) 474-4110

## **Country Club Enterprises**

PO Box 670, 29 Tobey Rd., W. Wareham, MA 02676  
Club Car golf cars, Carryall utility vehicles.  
Dave Farina, Keith Tortorella, Mike Turner (800) 662-2585

## **Crop Protection Services**

Suppliers of Chemicals, Fertilizer, and Grass Seed  
Jim Pritchard (401) 258-5472 [james.pritchard@cpsagu.com](mailto:james.pritchard@cpsagu.com)  
Glenn Larrabee (401) 258-3762 [glenn.larrabee@cpsagu.com](mailto:glenn.larrabee@cpsagu.com)  
[www.cpsagu.com](http://www.cpsagu.com)

## **DAF Services, Inc.**

20 Lawnacre Rd., Windsor Locks, CT 06096  
Custom pumping solutions. Custom pump controls. Complete pump service. Serving all of New England.  
Dick Young (860) 623-5207

## **DGM Systems**

153A Foster Center Road, Foster, RI 02825  
Golf and Sports Turf Specialty Products and Services  
Visit [www.dgmsystems.com](http://www.dgmsystems.com)  
Office (401) 647-0550  
Manny Mihailides (401) 524-8999  
David Mihailides (401) 742-1177

## **ezLocator**

115 Lordvale Boulevard, North Grafton, MA 01536  
A New Course Everyday!  
Steve Boucini, Representative 508-561-4079  
[sboucini@gmail.com](mailto:sboucini@gmail.com) [www.ezlocator.com](http://www.ezlocator.com)

## **Five Star Golf Cars & Utility Vehicles**

724 MacArthur Boulevard, Pocasset, MA 02559  
E-Z GO Golf Cars, Cushman Utility Vehicles  
Doug Hopper (401) 787-0514

## **G. Fialkosky Lawn Sprinklers**

PO Box 600645., Newton, MA 02460  
Irrigation services to golf courses throughout New England.  
Gary Fialkosky (617) 293-8632  
[www.garyfialkoskylawnsprinklers.com](http://www.garyfialkoskylawnsprinklers.com)

## **Harrell's LLC**

19 Technology Drive, Auburn, MA 01501  
Turf & Ornamental supplies. Chuck Bramhall (508) 400-0600,  
Jim Cohen (978) 337-0222, Mike Kroian (401) 265-5353,  
Mike Nagle (508) 380-1668

## **Hartney Greymont**

433 Chestnut Street, Needham, MA 02492 [www.hartney.com](http://www.hartney.com)  
Hartney Greymont is a company that specializes in tree care, landscape services, strategic woodland management and plant healthcare. Michael Colman (781) 727-7025

continued on next page



# Please Patronize these *FRIENDS* of the *ASSOCIATION*

## **Helena Chemical Company**

101 Elm Street, Hatfield, MA 01038 [www.helenachemical.com](http://www.helenachemical.com)  
National distributors of all your turf chemicals and fertilizers.  
Extensive line of Helena Branded wetting agents, foliar, micronutrients and adjuvants.  
Louis Bettencourt, CGCS (978) 580-8166  
Chris Leonard (339) 793-3705

## **Hillcrest Turf Services**

P.O. Box 767, Medfield, MA 02052  
Mike Parks (617) 852-0479  
Providing specialty cultural services to golf courses and sports turf.

## **International Golf Construction Co.**

5 Purcell Rd., Arlington, MA 02474  
Golf course construction. Antonios Paganis (781) 648-2351;  
(508) 428-3022

## **Irrigation Management & Services**

21 Lakeview Ave., Natick, MA 01760  
Irrigation consultation, design, and system evaluation.  
Bob Healey, ASIC, CID (508) 653-0625

## **John Deere Landscapes**

Offering our customers the most complete line of products, service and expertise in the industry. Ron Tumiski (800) 321-5325 x6219

## **Ken Jones Tire, Inc.**

71-73 Chandler St., Worcester, MA 01613  
Distributor of tires for lawn & garden, trucks, cars, industrial equipment, and golf cars. Gerry Jones (508) 755-5255

## **LaCorte Equipment**

LaCorte Equipment is your premier John Deere Golf Distributor in the Northeast.  
John Winskowicz (978) 471-8351  
Bill Rockwell (508) 789-5293  
Dan Paradise (978) 853-2916  
Eric Berg (516) 473-3321  
Call or visit our website at [www.lacorteequipment.com](http://www.lacorteequipment.com)

## **Larchmont Engineering & Irrigation**

11 Larchmont Lane, Lexington, MA 02420  
Offering a full range of inventory for irrigation drainage, pumps, fountains and landscape lighting products and services for all of your residential and commercial needs.  
(781) 862-2550 Susan Tropeano,  
Tim Fitzgerald [tim@larchmont-eng.com](mailto:tim@larchmont-eng.com)

## **Lazaro's Golf Course Supplies & Accessories**

dba Hammond Paint and Chemical Co., Inc.  
738 Main St., Suite 223, Waltham, MA 02154  
Complete line for all your of golf course supplies. Par Aide, Standard, Eagle One, turf and ornamentals, aquatics, turf marking paint, safety items, adjuvants Joe Lazaro - cell: (617) 285-8670;  
Fax: (781) 647-0787 Email: [jlazaro698@aol.com](mailto:jlazaro698@aol.com)  
[www.lazarogolfcoursesupplies.com](http://www.lazarogolfcoursesupplies.com)

## **Maher Services**

71 Concord Street, N. Reading, MA 01864  
Well drilling, pump service and well maintenance  
Peter Maher cell: (781) 953-8167 or (978) 664-WELL (9355)  
Fax (978) 664-9356 [www.maherserv.com](http://www.maherserv.com)

## **Maltby & Company**

30 Old Page Street, P.O. Box 364, Stoughton, MA 02072  
Provides expert tree pruning, tree removal and tree planting services. Our two other divisions include Natural Tree & Lawn Care, which treats for winter moth caterpillars, ticks and mosquitoes etc. Forest Floor recycling manufactures color enhanced mulch and natural composted leaf mulch. For more information or to speak with one of our arborists please call Bill Maltby at (781) 344-3900

## **MAS Golf Course Construction LLC**

60 Hope Ave., Ste. 107, Waltham, MA 02453  
Fulfilling all your renovation and construction needs.  
[www.masgolfconstruction.com](http://www.masgolfconstruction.com) Matthew Staffieri (508) 243-2443

## **Mayer Tree Service**

9 Scots Way, Essex, MA 01929  
Providing a full range of tree service including plant health care, stump grinding, and compost tea. We can also provide loam, mulch, and mobil debris grinding. Jeff Thomas (978) 500-4921

## **McNulty Construction Corp.**

P. O. Box 3218, Framingham, MA 01705  
Asphalt paving of cart paths, walkways, parking areas; imprinted asphalt. John McNulty (508) 879-8875

## **MTE, Inc. – Turf Equipment Solutions**

118 Lumber Lane, Tewksbury, MA 01864  
New England's source for equipment sales, service and parts. New and pre-owned mowers, tractors, attachments and much more from: Jacobsen, Turfco, Smithco, Ventrac, Redexim, Neary Grinders, Ryan, Buffalo Turbine, Mahindra, Husqvarna, Gravely, Standard, Par-Aide and others. Office: (978) 654-4240.  
Mark Casey: (617) 990-2427. Matt Lapinski: (978) 551-0093

## **Mungeam Cornish Golf Design, Inc.**

195 SW Main Street, Douglas, MA 01516  
Golf course architects  
Office: (508) 476-5630  
Cell: (508) 873-0103  
Email: [info@mcgolfdesign.com](mailto:info@mcgolfdesign.com)  
Contact: Mark A. Mungeam, ASGCA  
[www.mcgolfdesign.com](http://www.mcgolfdesign.com)

## **New England Specialty Soils**

435 Lancaster, Street, Leominster, MA 01453  
1mm. Top Dressing Sand, High Density Bunker Sand, Rootzone Mixes, Tee Blends, Divot Mixes, Bridging Stone, Cart Path Mix, Infield Mixes, Inorganic Amendments, SLOPE LOCK Soil.  
Ed Downing (978) 230-2300 Bob Doran (978) 230-2244  
[www.nesoils.com](http://www.nesoils.com)

## **New England Turf**

P.O. Box 777, West Kingston, RI 02892  
Phone: (800) 451-2900 or Ernie Ketchum (508) 364-4428;  
Mike Brown (508) 272-1827 [www.newenglandturf.com](http://www.newenglandturf.com)

## **NMP Golf Construction Corp.**

25 Bishop Ave., Ste. A-2, Williston, VT 05495  
Golf course construction. Mario Poirier (888) 707-0787

## **Northeast Golf & Turf Supply**

6 Dearborn Road, Peabody, MA 01960  
Complete line of Golf Course, Landscape & Lawn Care Construction and Maintenance Supplies  
Tom Rowell (978) 317-0673; Bill Stinson (413) 668-7943;  
Jeff Brown (508) 868-8495; Dan Ricker (978) 317-7320

*continued on next page*

# Please Patronize these *FRIENDS* of the ASSOCIATION

## **North Shore Hydroseeding**

20 Wenham St., Danvers, MA 01923  
Hydroseeding and erosion control services.  
Brian King (978) 762-8737 [www.nshydro.com](http://www.nshydro.com)

## **On-Course Golf Inc., Design/Build**

16 Maple Street, Acton, MA 01720  
We serve all your remodeling and renovation needs. You can trust your project with us! We make you look good!  
Sean Hanley (978) 337-6661 [www.on-coursegolf.com](http://www.on-coursegolf.com)

## **Putnam Pipe Corp.**

90 Elm St., Hopkinton, MA 01748  
Underground water, sewer, & drain pipe and fittings-Erosion and sediment control material. 24-hour service.  
David Putnam (508) 435-3090

## **Read Custom Soils**

5 Pond Park Road, Suite 1, Hingham, MA 02043  
Custom soil blending, top dressing sands, Root zone blends, "early green" black sand, divot & cart path mixes.  
Terry Driscoll, Garrett Whitney (888) 475-5526

## **Saturated Solutions**

18 Evergreen Road, Northford, CT 06472  
Greg Moore (203) 980-1301  
Saturated Solutions is the sole distributor of the Air2G2 Machine for sales and contracted services. Replenish your soils with oxygen when it needs it most in any conditions with no disruption.  
[saturatedsolutionsllc.com](http://saturatedsolutionsllc.com)

## **Select Source**

3208 Peach Street, Erie, PA 16508  
National, full line manufacturer and wholesaler of turf, ornamental and specialty chemical products.  
Mike Blatt, Northeast Territory Manager (814) 440-7658

## **Slater Farms** (Holliston Sand Products)

P. O. Box 1168, Tift Rd., Slatersville, RI 02876  
USGA recommended topdressing, root-zone mixes, compost, pea stone, angular & traditional bunker sand.  
Bob Chalifour, CGCS (Ret.) (401) 766-5010 Cell: (860) 908-7414

## **Sodco Inc.**

P. O. Box 2, Slocum, RI 02877  
Bluegrass/Fescue, Bluegrass/Rye, Bluegrass/Fescue/Rye, Bentgrass. Pat Hogan (800) 341-6900

## **Southwest Putting Greens of Boston**

P.O. Box 827, Westford, MA 01886  
Synthetic turf, tee lines, practice greens, outdoor and indoor practice facilities. Douglas Preston (978) 250-5996

## **Stumps Are Us Inc.**

Manchester, NH  
Professional stump chipping service.  
Brendan McQuade (603) 625-4165

## **Syngenta Professional Products**

111 Craigmere Circle, Avon, CT 06001  
Melissa Gugliotti (860) 221-5712

## **Tartan Farms, LLC**

P.O. Box 983, West Kingston, RI 02892  
Dave Wallace  
(401) 641-0306

## **Tom Irwin Inc.**

11 A St., Burlington, MA 01803  
Turf management products. Paul Skafas, Rob Larson, Chris Petersen, Greg Misodoulakis, Fred Murray (800) 582-5959

## **Tree Tech, Inc.**

6 Springbrook Rd., Foxboro, MA 02035  
Foxboro, Wellesley, Fall River Andy Felix (508) 543-5644  
Full service tree service specializing in zero impact tree removal, stump grinding, tree pruning and tree risk assessments by our team of Certified Arborists.

## **Tuckahoe Turf Farms, Inc.**

P. O. Box 167, Wood River Junction, RI 02894  
Joe Farina (774) 260-0093

## **Turf Products Corp.**

157 Moody Rd., Enfield, CT 06082  
Distributors of Toro irrigation & maintenance equipment and other golf-related products. Nat Binns (332) 351-5189,  
Tim Berge (860) 490-2787, Andy Melone (508) 561-0364

## **Valley Green**

14 Copper Beech Drive, Kingston, MA 02364  
Phone: (413) 533-0726 Fax: (413) 533-0792  
"Wholesale distributor of turf products"  
Doug Dondero (508) 944-3262, Jon Targett (978) 855-0932,  
Joe Trosky (860) 508-9875

## **Winding Brook Turf Farm**

Wethersfield, CT 06109  
Scott Wheeler, Sam Morgan (800) 243-0232

## **WinField**

29 Gilmore Drive - Unit C, Sutton, MA 01590  
Using industry-leading insights to provide you with the products that help you win.  
Jim Favreau (978) 815-9810

## **Winterberry Irrigation**

2070 West Street, Southington, CT 06489  
Irrigation and Pump Installation and Service  
Visit [www.winterberryirrigation.com](http://www.winterberryirrigation.com)  
Matt Faherty 860-681-8982 [mfaherty@winterberrygarden.com](mailto:mfaherty@winterberrygarden.com)

# NEW Lower Rates to Help Make Advertising in The Newsletter More Budget Conscious

## THE NEWSLETTER 2015 DISPLAY ADVERTISING ORDER FORM

Company Name: \_\_\_\_\_ Phone # \_\_\_\_\_

Address: \_\_\_\_\_

Contact Name: \_\_\_\_\_ Email \_\_\_\_\_

Issues (List month and total number): \_\_\_\_\_

Amount of Check: \_\_\_\_\_ (Made payable to "GCSANE")

<u>Member Rates:</u>	Monthly Rate	4 Times Per Yr. (Save 5%)	6 Times Per Yr. (Save 10%)	8 Times Per Yr. (Save 10%)	Annual Rate (Save 15%)
<input type="checkbox"/> 1/4 page (vertical; 3.75" wide x 5" deep)	☐\$ 90.00	☐\$ 342.00	☐\$ 486.00	☐\$ 648.00	☐\$ 918.00
<input type="checkbox"/> 1/2 page (horizontal; 7.5" wide x 5" deep)	☐\$150.00	☐\$ 570.00	☐\$ 810.00	☐\$1080.00	☐\$1530.00
<input type="checkbox"/> Full Page (vertical; 7.5" wide x 10" deep)	☐\$200.00	☐\$ 760.00	☐\$1080.00	☐\$1440.00	☐\$2040.00

**Non-Member Rates:** \*All payments must be received in full before the ad appears in The Newsletter.

<input type="checkbox"/> 1/4 page (vertical; 3.75" wide x 5" deep)	☐\$120.00	☐\$456.00	☐\$648.00	☐\$ 864.00	☐\$1224.00
<input type="checkbox"/> 1/2 page (horizontal; 7.5" wide x 5" deep)	☐\$180.00	☐\$684.00	☐\$972.00	☐\$1296.00	☐\$1836.00
<input type="checkbox"/> Full Page (vertical; 7.5" wide x 10" deep)	☐\$240.00	☐\$912.00	☐\$1296.00	☐\$1728.00	☐\$2448.00

***\*DEADLINE for ads: The first of the month for that month's issue.***

### Ad Preparation Specifications:

**File Specifications for Ads Supplied in Digital Format:** Ads may be sent either by email or by mailing a CD to the address below. Formats preferred are .GIF; .JPG and .PDF. Ads can also be accepted in Microsoft Word or Microsoft Publisher files. Full color is available with all ads.

**Advertising Design Services:** Design services are available by request and consultation and will be billed separately.

**Send all Newsletter ads to:**

Julie Heston

36 Elisha Mathewson Road, N. Scituate, RI 02857

Phone: 401-934-7660 / Fax: 401-934-9901

jheston@verizon.net