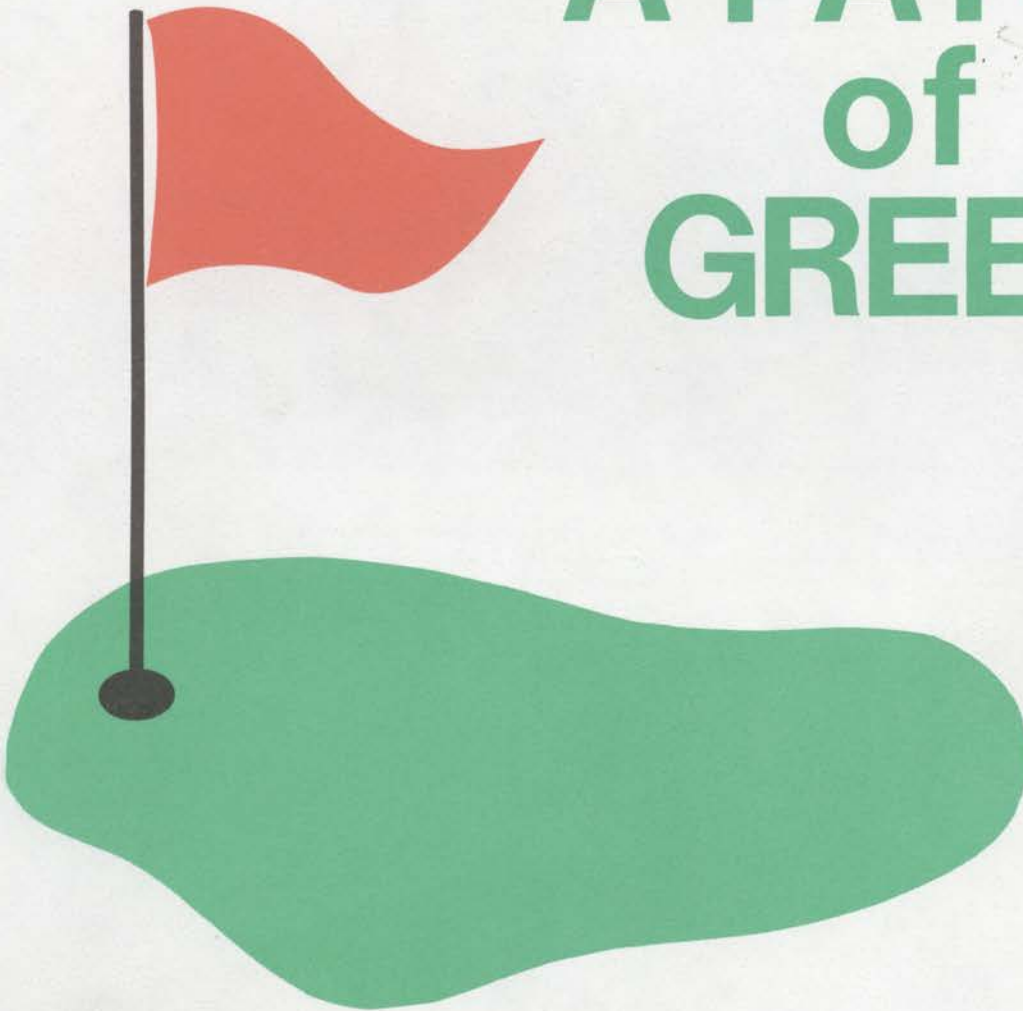


JANUARY/FEBRUARY 1992

Our 67th Year

A PATCH of GREEN



OFFICIAL PUBLICATION OF THE MICHIGAN & BORDER
CITIES GOLF COURSE SUPERINTENDENTS ASSOCIATION

OSBURN INDUSTRIES



Custom Top Dressing Blends

- ◆ TDS 2150 Dune Sand
- ◆ 540 Best
- ◆ Local Mason Sand



- ◆ Michigan Sphagnum
- ◆ Canadian Sphagnum
- ◆ Sandy Loom Topsoil
- ◆ Reed Sedge Peat

Trap Sand

- ◆ Best 530
- ◆ Local 2NS Sand
- ◆ Local Mason Sand

Other Materials

- ◆ Cart Path Slag
- ◆ Pea Pebble
- ◆ Decorative Boulders
- ◆ Parking Lot Stone

Call for details

(313) 292-4140

Ask for Dick, Rick or Tim

**5850 PARDEE
TAYLOR, MICHIGAN 48180**





ANNUAL MEETING AT MAPLE LANE GOLF CLUB

The Annual Meeting for MBCGCSA was held October 21, 1991 at Maple Lane Golf Club. Weather cooperated with the 45 golfers that participated for the Clarence H. Wolfrom Trophy as the lowest net score. This years winner was Roy Szyndlar of Southgate Golf Course with a net score of 66. Low gross was Ray Manion from Silver Tee in Ontario with a 74 and Jerry Prieskorn won closest to the pin event.

President Tom Mason called the meeting to order at 8:00 p.m. To help expedite the meeting, a conglomeration of committee reports were available to the membership to be read and to be discussed. M.T.F. President Fritz McMullen and Gordon LaFontaine talked about the Michigan Turfgrass Foundation and its activities. Gordie reported on the continual growth of the Endowment Fund and gave special thanks to Peter Roehl and Nick Panasiuk for their generous contribution.

Elections were held, with George Prieskorn moderating the election process. The results were:

Ken DeBusscher, President
Jay DelCamp, Vice President
Gary Thommes, Secretary/Treasurer

Two Board of Directors positions were available and **Paul Dushane** of Knollwood Country Club and **Fritz McMullen** of Forest Lake Country Club were elected by the voting members. President Ken DeBusscher appointed **Jim Eccleton** to fill a one-year vacancy because of Jay DelCamp's election to Vice President.

Congratulations to new members Paul and Fritz; to Jay in becoming Vice President and to Ken for reaching the position of President of our excellent association!!

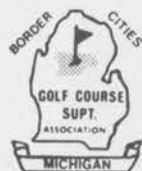


1992 BOARD MEMBERS

Left to right; Fritz McMullen, Jim Eccleton, Paul Dushane, Jay DelCamp (vice-president), Ken DeBusscher (president), Paul Kolbe, Mike Bay, Tom Mason (Past president), Carey Mitchelson, Gary Thommes (secretary/treasurer).



Immediate Past President, **TOM MASON**, is presenting the gavel to new President **KEN DeBUSSCHER**.



"A PATCH OF GREEN"

Published Bi-Monthly by the
**MICHIGAN AND BORDER CITIES GOLF
COURSE SUPERINTENDENTS ASSOCIATION**

President
KEN DeBUSSCHER

Vice-President **Secretary/Treasurer**
JAY DelCAMP **GARY C. THOMMES**

Directors
MICHAEL BAY **PAUL KOLBE**
JIM ECCLETON **PAUL DUSHANE**
STEVE KOLONGOWSKI **FRITZ McMULLEN**
CAREY MITCHELSON

President Emeritus
TOM MASON

Editor
PAUL KOLBE

Printed at
BLAKEMAN PRINTING COMPANY, INC.
Fraser, Michigan
(313) 293-3540

MBCGCSA JANUARY MEETING

The January 13th meeting of the Michigan and Border Cities Golf Course Superintendents Association was hosted by Links of Pinewood Golf Club. Superintendent Jeff Akers saw that we were provided with an excellent lunch. Special thanks to Ernie Fuller who has been very supportive of the MBCGCSA and turf research in the state of Michigan.

After lunch, President Ken DeBusscher called the meeting to order. Tom Mason, MBCGCSA Representative to the National, was given approval to support those candidates who would best represent the industry in the National Elections.

Fritz McMullen and Mike Bay, Co-chairmen of the Educational Committee, discussed meetings and sites in the coming year. All sites have been determined with speakers needed for two meetings. Members of the Educational Committee are Marty Miller, Mark Jackson, Doug Johanningsmeier, Ed Hock, Roy Szyndlar and Tom Stark. Any ideas for topics or speakers you have, please let these people know. The

Hospitality Room in New Orleans will again be run by Mike Bay. MBCGCSA will staff the Room on Thursday and Sunday.

Hot topic of the meeting was the guest policy at meeting sites during the year. This problem arose last year during the meeting at T.P.C., where Superintendents were told the field was full when they called in. There was much discussion from the members present with ideas on reducing the number of guests, to a "No Guest" policy. This question will be further addressed by the Board of Directors at a future meeting.

The next meeting will be the annual bowling meeting at Salt River on March 16th. The guest speaker will be David Smitley from MSU, speaking on insect control. Hope to see you there.

Ed Hock,
Education Committee

CALENDAR OF EVENTS

March 16, 1992 Salt River Golf Club
Dr. David Smitley on Insect Control
and Bowling Tournament

March 21, 1992 Detroit Golf Club
GAM Seminar

April 6, 1992 Essex Golf and Country Club
U.S./Canada Joint Meeting

May 15, 1992 Links of Pinewood
Special Olympics

June 8, 1992 Arbor Hills Country Club
MBCGCSA meeting with the
Western GCSA invited to participate

1991 FIELD DAY
Scheduled for Thursday, August 20, 1992

1993 TURF CONFERENCE DATES —

The 63rd Annual Michigan Turfgrass Conference will be held Tuesday, January 5 through Thursday, January 7, 1993. Please make note of these earlier

dates. According to Conference Committee chairman Jon Maddern, "The earlier dates were necessitated by the GCSAA conference being earlier in 1993."

1991 MBCGCSA CHRISTMAS PARTY

Amid the beautiful Christmas decorations and surrounded by the festive music of the season, the Annual MBCGCSA Christmas Dinner Dance was held December 13, 1991 at the Country Club of Detroit. The historic club provided a unique background for the event that continues to be a highlight of the year.

Our newly elected President, Ken DeBusscher, took the opportunity prior to dinner to thank several people and introduced the Board of Directors to all of the guests. Ken thanked Kevin Dushane for all the articles he submitted **A Patch of Green**, and congratulated him as winner of the John Walter Award, given to the author of the best written article for the year in our magazine. Outgoing President Tom Mason, who has dedicated a great deal of time and energy on the Board over the years, was introduced and presented a plaque in appreciation for all his effort. Ken thanked Tom for all his hard work

towards our organization. Ken also presented Past President Charlie Gaige with a gift from the Board and thanked him for his work on the Board. Charlie has organized several Christmas Party's in the past and helped tremendously again this year.

Once again music during dinner and dancing was provided by the band "Secrets" and as they played the 140 guests mingled and several took the opportunity to tour the large clubhouse and its interesting character. I would to thank all those involved in organizing the affair, including the CCD staff who offered extraordinary service, and my wife, **Debra**, who put together the angel ornaments as a gift for guests. The entire evening was something to remember from beginning to end.

Carey Mitchelson,
Chairman



TOM MASON, KEN McRAE, FRITZ McMULLEN, and JIM VLASSIS, left to right, discussing what to buy their wives for Christmas!



KEN DeBUSSCHER, center, with the two newly elected Board of Directors members, FRITZ McMULLEN, left, and PAUL DUSHANE.



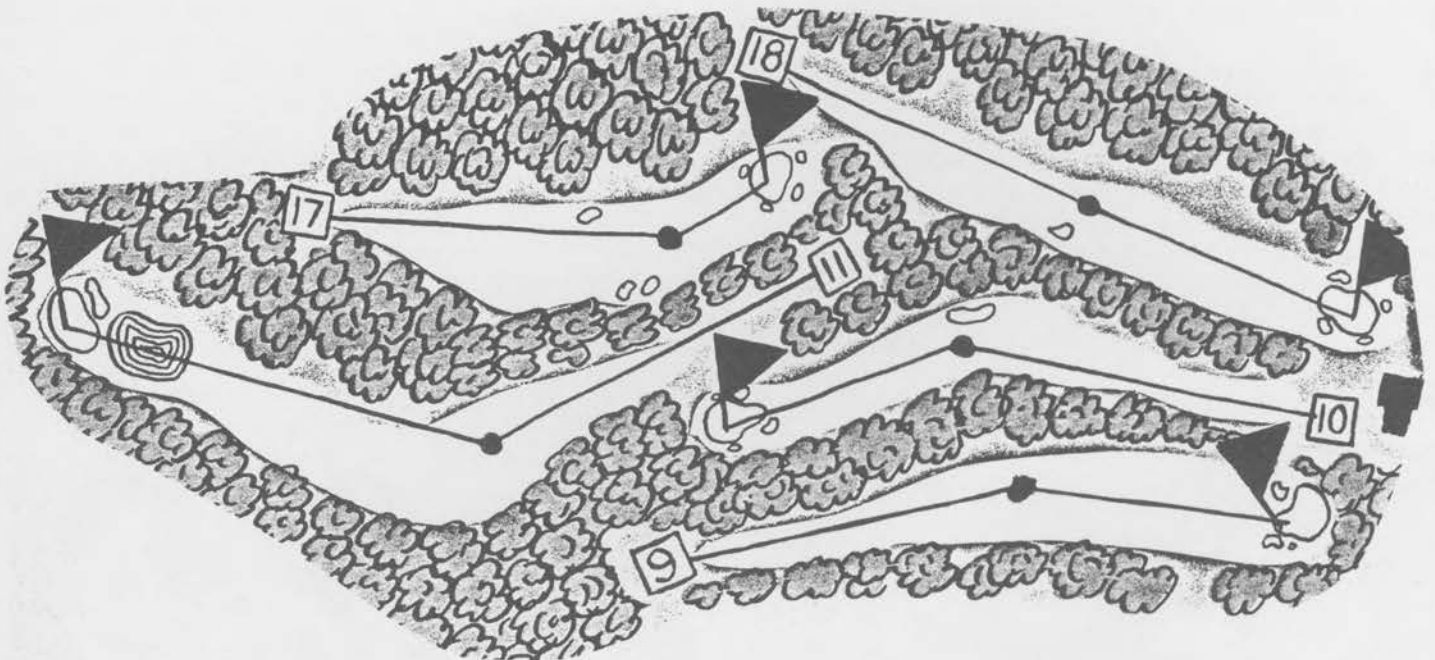
TOM MASON, left, receives his Past Presidents plaque from new President Ken DeBusscher.



ARTHUR HILLS, left, looks on while KEVIN DUSHANE, center, is congratulated by KEN DeBUSSCHER for receiving the John Walter Award.

FROM TEE TO GREEN. . . .

. . . .and HAZARDS IN BETWEEN.



Trap & Topdressing Sands

CONTROLLED TO USGA SPECIFICATIONS

GREAT LAKES TOPDRESSING SAND
IS AVAILABLE IN TRUCKLOAD QUANTITIES

ALSO AVAILABLE —TRAP AND SPECIALTY SANDS



EVANS MINING CORP.

1900 RICHMAN ROAD • SMITH'S CREEK, MICHIGAN 48074

1-800-541-0434

367-3021

EDITORIAL REPORT

The goal of **A Patch of Green** for 1991 was intended to be a local newsletter with more articles written from within the association's membership. Through the July/August issue, 39% of the articles were from within the association. We averaged 13 articles per issue. We are always looking for articles, pictures, any new ideas that would make our job with **A Patch of Green** easier.

With the emphasis on the environment in our profession, we will experience many situations that would make excellent articles for the newsletter. Some examples are underground storage tank installation; do you, and how, post pesticide applications; how do you handle golfer complaints about pesticides; are you using IPM techniques, etc. All of us are in the same situation, so sharing ideas would benefit all of us.

With the help of the Education Committee, we were updated on the monthly meetings that took place at the various golf courses. If you missed the meetings you could get caught up on what was discussed from the excellent written articles.

I would like to thank Doug Johanningsmeier for his time and effort in taking pictures of meetings and special events. More pictures make the newsletter more personable (hope we didn't embarrass anyone). Thanks to all the advertisers that support **A Patch of Green** — we have approximately 28 ads per issue.

Kevin Dushane contributed some articles and also wrote an article. Ted Woehrle, Editor, contributed a personal article on professionalism and spent many hours gathering articles pertinent to our industry.

Ted's availability to these articles is an asset to us both filling up the pages and to our enjoyment and education in reading them. Hopefully Ted's next opportunity in the industry will not take him away from our association and his involvement with **A Patch of Green**.

A problem with this years issues was the lateness of some of them. I talked to Richard Briddick from Blakeman Printing Company and one reason for the tardiness is due to the Post Office being slow in sending out their bulk mailings. Richard talked to the Fraser Postmaster and hopefully the situation will be resolved. Some of the issues took two weeks to get back to his printing shop only ½ mile from the Post Office! Richard also mentioned that he has to call 80% of the advertisers for each issue to see if they wish to continue their advertising. It would be recommendable if the advertisers could pay for six months or one-year increments; remember there is a 10% discount for a one year advertising subscription. This would avoid the phone calls and reduce the last minute advertising additions that could hold up the upcoming issue.

The new challenge for **A Patch of Green** in 1992 is to have a consistent 50% or more of the articles from our membership, be more prompt with the mailing and to continue keeping the articles current.

ART HILLS WINS TWO BIG AWARDS

by Ted Woehrle

Our own Art Hills, Golf Course Architect from Toledo, Ohio has won two of the three awards given by **Golf Digest** for the best golf course design in the Private Club and Public Club categories listed in their December, 1991 issue.

The Golf Club of Georgia (lakeside Course) in Alpharetto, Georgia won the Best Private Club category and Harbour Pointe Golf Course in Mukilteo, Washington won the Best Public Course award.

Jerry Mathews, another local golf course designer from Lansing, was also honored with his design of the 2nd Best Public Golf Course for 1991. He designed Elk Ridge Golf Course in Atlanta, Michigan.

Congratulations to both Art and Jerry.

POND DREDGING SPECIALIST

Off Road Trucking

Wide Track Bulldozing

Shore Line & Land Development

Grading

SWEETCO INC.

27405 Henry Rd.

South Lyon, Michigan 48178

313-437-1830



THE EDUCATION COMMITTEE

The Education Committee was formed during the past year to address concerns of declining membership participation and attendance at the monthly meetings, and to give a broader idea base for selecting topics to be addressed. Steve Kolongowski and Michael Bay were selected as co-charimen of the committee. We were able to recruit the able assistance of Doug Boyle, Ed Hock, Mark Jackson, Doug Johanningsmeier, Marty Miller and Tom Stark. These people took the time from their busy schedules to help us because they shared the concerns of the Board. We would like to extend our thank you to these members for sharing this burden with us and for maintaining the sense of cooperation that is needed to accomplish our goals.

Purpose of the Committee:

- I. To build a strong education program for the purpose of keeping the membership informed, updated, and involved in our association.
- II. To annually set goals for meeting sites.
- III. To select topics that concern our association for the purpose of educating our membership.

Goals of the Committee:

- I. To get membership attendance and involvement by selecting strong topics for each meeting.
- II. To select topics and members to address topics at meetings.
- III. To allow the membership to get involved in selecting topics for each year — by survey; suggestion letter.

The committee met on December 15, 1991 to discuss how to address the concerns of the membership, accomplish our goals, and meet our committee's purpose. In so doing, we defined more specific actions that we could take to achieve our goals. Assignments were made, and we were much more able to share the burden of the monthly meetings. Those actions included:

- 1) To start a newsletter for **A Patch of Green** about each education topic at each meeting.
- 2) To introduce each new member in **A Patch of Green** (Photo, name, club or business, length of



TDS 2150 TOPDRESSING SAND

USA Sieve	MM	%Retained
20	.84	.0
30	.60	.5
40	.42	6.0
50	.30	29.0
60	.25	25.6
70	.21	27.1
100	.15	11.0
140	.10	.8
200	.07	.0
270	.05	.0
PAN		

- Meets USGA specifications
- Consistent Quality
- Lab Reports with Every Shipment
- Michigan's Largest Topdressing Sand Supplier
- 87% Between .21 and .50 MM (Current Tests)

Standard Sand Corporation
P.O. Box 290
Grand Haven, Michigan 49417
Contact: Roy Hanson
(616) 842-5180

PUBLICITY/AWARDS COMMITTEE REPORT

Herb Klein was presented with his retirement plaque for his many years of service at Gowanie Golf Club. The presentation took place at Pine Lake Country Club, site of the 1990 Christmas Party.

Nineteen-ninety-one started off with Jim Timmerman of Orchard Lake Country Club receiving the Distinguished Service Award at the annual GAM/MBCGCSA meeting at Detroit Golf Club. The criteria used to consider an individual for this honor is three fold — 1) an individual must have had a significant influence upon our association; 2) he or she must have benefitted the profession of the golf course superintendent; and 3) this person must have aided in the development and enjoyment of the game of golf. Past president Charles Gaige and his Nominating Committee consisting of other past presidents

made an excellent choice in Jim. Kevin Dushane made the presentation and his speech was published in the May/June issue of *A Patch of Green*.

The John Walter Award is given to the writer of the best article by a superintendent in *A Patch of Green*. There was no award given at the Christmas Party in 1990, but this year we have a few candidates for the award which will be announced at this year's party at the Country Club of Detroit.

We need participation to help our association grow, and the one of the best ways is by writing articles for *A Patch of Green*, to let other people know what you feel or know. Everybody has some special talent that can be passed on to another.

Paul Kolbe,
Chairman

employment, family, interests).

3) Interview one seasoned member for *A Patch of Green* giving history, photo, interests.

4) Submit a list of topics for each meeting site for the upcoming year to *A Patch of Green*.

5) Write more articles for *A Patch of Green* about — What's new in our business? What's of interest? What's happening at MSU, What's happening from GCSAA?

6) Attempt to get more members involved in writing

articles for *A Patch of Green*.

Although not all goals have been fully achieved or addressed, we enjoyed greater participation in planning and preparing for the meetings this year. Hopefully, this shared responsibility will continue to grow annually and result in an overall improvement of the quality of our education program.

Respectfully submitted,
Michael E. Bay

Greensmaster 3100

With the exclusive Turf Guardian Leak Detection System

Design features of the Greensmaster 3100 have optimized the proven Greensmaster cutting characteristics for unsurpassed quality of cut. Not only does the Greensmaster 3100 outclass other riding greens mowers of performance and serviceability, it's environmentally beneficial in terms of oil spill prevention, fuel conservation and noise reduction. Call for your demonstration.

1-800-822-2216



WILKIE

Turf Equipment Division, Inc.



1050 Opdyke Road, P.O. Box 430749, Pontiac, Michigan 48343 - (313) 373-8800

GOLF

The Golf Committee would like to thank each superintendent who hosted a golf meeting this year. Their time and effort was greatly appreciated.

Glen Korhorn — Salt River
Jeff Akers — Links of Pinewood
Ed Hock, Jr. — Grosse Ile
John Shreve — Lakelands
Mike Giuffrie — TPC

Rick Murphy — Bay Pointe
Paul Kolbe — Maple Lane

Large turnouts at several meetings fashioned some substantial payoffs in the skins games. Congratulations to those competitors. Next years golf meetings will include more individual events as well as additional tournaments.

TOURNAMENT WINNERS 1991

Tournament: Joint Meeting with Canadians
Site: Grosse Ile

Winners: Americans

Tournament: MBCGCSA Championship
Site: Bay Pointe

Winners: Champion — Carey Mitchelson
Runner-up — Gary Thommes
Low net — Dave Montgomery
1st flight — Low gross, Steve Sump
Low net, Tim Osburn

Tournament: Michigan Superintendents Champ.

Site: Royal Scot

Winners: Championship — Carey Mitchelson
1st flight — John Oles

A special thanks to Jay DelCamp and his continuing effort in organizing this tournament among the various superintendents organizations. Also a thank you to Clint Ovren for hosting the event.

Tournament: Clem Wolfrom Trophy
Site: Maple Lane

Winners: Low net — Roy Szyndlar
Low gross — Ray Manion

CENTURY RAIN AID

GOLF'S IRRIGATION PROFESSIONALS



How CRA Helps Superintendents:

- Complete stock of irrigation supplies
- Water conservation analysis & troubleshooting
- Assistance in pumping improvement and pumping cost efficiency
- Drainage solutions
- Fountains • Aerators • Pump Management
- Improvements of energy-usage cost
- Technical assistance

FREE Catalog!

1-800-347-4272

Madison Heights, MI 48071-1522
31691 Dequindre
(313) 588-2990
Fax (313) 588-3528

Ann Arbor, MI 48104
2461 S. Industrial Hwy.
(313) 668-1020
Fax (313) 668-7143

Grand Rapids, MI 49548-2244
3400 Jefferson S.E.
(616) 452-3373
Fax (616) 452-5720

Southfield, MI 48034-4296
22159 Telegraph
(313) 358-2994
Fax (313) 358-1022

1991 MEETINGS

January 14, Bay Pointe Golf Club
Host Superintendent: Rick Murphy
Educational Topic: GCSAA Conference and Show

All Class A, B, AA and retired A and B members met in the morning session. Some of the topics discussed were the MBCGCSA Survey, Michigan Turfgrass Foundation Conference, GCSAA Conference and Elections. After lunch the same topics and more were discussed with the rest of the membership.

RICK MURPHY was
host twice during 1991 at
Bay Pointe Golf Club



D&C Distributors Inc.

51000 Grand River Wixom, Michigan 48393
(313) 349-7779 FAX (313) 349-4670

**Midwest's Largest Stocking Dealer
For
R & R PRODUCTS**

QUALITY REPLACEMENT PARTS

TORO	JACOBSEN	HAHN-WESTPOINT	CUSHMAN
RYAN	ROSEMAN	RANSOMES	MOTT
NATIONAL	YAZOO	FORD	EXCEL
REEL SHARPENING COMPOUND			

FLYMO — POWER PRUNER — AaB-SORBOIL EMULSIFIER

CALL US TOLL FREE

800-888-7779

YOUR ONE STOP SHOP
FOR YOUR GOLF COURSE MOWING EQUIPMENT
REPAIR PARTS AND SUPPLY ITEMS
FLAGS - POLES - RAKES - CUPS

RICO MFG.

EXCELLENT QUALITY PERSONALIZED TUBE FLAGS
SOLID FIBERGLASS POLES WITH SOLID IMPREGNATED COLOR
FIBERGLASS RAKE HANDLE, FOAM FILLED TO FLOAT
(14" or 22" RAKE HEAD — ONE YEAR WARRANTY)
PUTTING GREEN FLAGS, POLES AND CUPS
WE ALSO HANDLE LEWIS AND PAR AIDE AND STANDARD

BIG ENOUGH TO SERVE YOU BETTER — SMALL ENOUGH TO CARE

TRIPLE PLAY

Elite Turfgrass Seed Mixture

Triple Play is the unique blend of ryegrasses that has been carefully selected to meet specific needs for seeding Athletic Fields, Lawn Areas and Golf Courses.

Triple Play contains the elite turf-type ryegrasses of PENNANT, PEBBLE BEACH and STALLION. Triple Play will produce a beautiful dark green color with excellent heat and drought tolerance.

Seeding Recommendation
5 to 7 lbs. per 1,000 sq. ft.



Turf Chemicals Inc.

1011 E. Main
P.O. Box 451

Owosso, Michigan 48867
Phone: (517) 725-7145

**FOR ALL OF YOUR FERTILIZER,
CHEMICAL AND GRASS SEED NEEDS**



February 18, Links of Pinewood Golf Club
 Host Superintendent: Jeff Akers
 Educational Topic: Grounds Maintenance Hazard Awareness
 Speakers: Rena Pomaville, Envirotherm, Inc.,
 Frank Rossi, Michigan State University

This program included a chemical hazard awareness program, MSDS interpretation, general safety awareness, hearing protection, respirator training and maintenance. It also gave everyone a chance to meet Frank Rossi, the new Turf Environmentalist from Michigan State University

FRANK GALBAVI, discusses the Turfgrass and Landscape equipment program at Michigan State University.

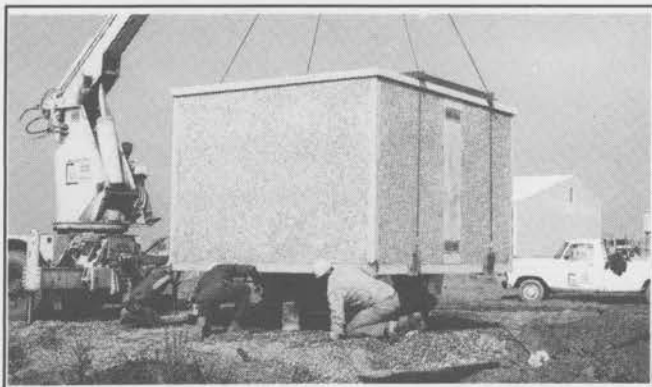
JENNINGS

PARK • PLAYGROUND • SCHOOL EQUIPMENT

supplier of



Shelters
 Storage Buildings
 Rest Rooms
 Bridges
 Benches/Tables/Litter Receptacles
 Pool Furniture



★ ★ NEW ★ ★
 Hazardous Materials Storage Building

— Relocatable, meets E.P.A. standards

CALL: 1-800-632-4153

for a complete listing!

March 11, Salt River Golf Club
Host Superintendent: Glen Korhorn
Speaker: Mark Jackson, Indianwood Golf and C.C.

There was no educational topic for this meeting. The committee decided to use this meeting for member introductions. Each member was asked to give a little information about themselves. Where they work, how long, etc. They were also asked to pass along any new ideas that could help all members.



RAY HOLLOWAY, from
Forest Lake Country Club,
talked about the current Turfgrass
Equipment Technicians Association.



OSMAC

Radio-Controlled Irrigation System

The OSMAC System is a wireless radio based product that provides management of the entire irrigation system, giving you a fast and efficient method of sprinkler control. The OSMAC Central Control Station is inexpensive and in many applications, can be self-installed. For more information contact Jim Koziatsek.



WILKIE

Turf Equipment Division, Inc.

**Auburn Hills
(313) 373-8890**

**Farmington Hills
(313) 476-3664**



**Sterling Heights
(313) 939-3670**

April 29, Grosse Ile Golf and Country Club

Host Superintendent: Ed Hock, Jr.

Educational Topic: Weed Control

Speaker: Dr. Bruce Branham, MSU

This was the annual joint meeting with the Ontario Golf Course Superintendents Association. Dr. Branham spoke about summer weed control in turf and ornamentals. This meeting was the second largest attended.

June 17, Lakelands Golf and Country Club

Host Superintendent: Jon Shreve

Educational Topic: People Management, Personnel Relations

Speaker: Jim Timmerman, Orchard Lake Country Club, Neil Duff

This meeting involved questions and answers about how to manage people and personnel relations. Mr. Duff also discussed proper hiring/firing techniques. There was also discussion about employee handbooks, rules and regulations.

July 1, Tournament Players Club in Dearborn

Host Superintendent: Mike Guiffrie

Educational Topic: Mechanics

Speaker: Frank Galbavi, Turfgrass and Landscape Equipment program at Michigan State University, Ray Holloway, Forest Lake Country Club

This program featured everything you wanted to know about golf course and landscape mechanics. Mr. Galbavi discussed his Technology Program at Michigan State University and the future of his program. Mr. Holloway talked about the current Turfgrass Equipment Service Technicians Association and the future direction that they are headed in.



August 12, Barton Hills Country Club

Host Superintendent: Tim Dark

Educational Topic: Composting

Speaker: Ray Ayer, Ann Arbor Solid Waste Division

Mr. Ayer spoke about the proper techniques for starting and maintaining compost piles. He mentioned proper carbon/nitrogen ratios, aeration and moisture levels, also proper site selection.

September 30, Bay Pointe Golf Club

Host Superintendent: Rick Murphy

Educational Topic: Budgets and Computers

Speakers: Mike Edgerton, Meadowbrook Country Club, Jim Timmerman, Orchard Lake Country Club

Mike talked about the steps he takes to prepare a budget. It takes time and preparation to help present an accurate budget to the Board. Jim mentioned that the use of computers helped him very much with his budget preparation. His increased accuracy with keeping records, charts, graphs, inventories, are very beneficial to his budget process. This was also the annual superintendent and vendor golf championship of the year.

October 21, Maple Lane Golf Club

Host Superintendent: Paul Kolbe

This is an annual superintendents meeting. Candidates will be elected. The golf event was the C.H. Wolfrom Classic. This is the last golf event for the 1991 season.

November, Forest Lake Golf Club

Host Superintendent: Fritz McMullen

This meeting is the 1991 year end review, superintendents only.

**MIKE GIUFFRIE, Superintendent
at TPC of Michigan,
is all smiles at the July Meeting.**

MEMBERSHIP REPORT

Total Membership for 1991 — 328 members

Class A members: 141
Class AA members: 15
Class B members: 30
Class D members: 37
Class E members: 5
Class F members: 85
Class H members: 14

NEW MEMBERS FOR 1991:

AUGER, RUSSELL — Lochmoor Club
BAGGETT, JAMES — The Heathers Club
BELLERS, RICHARD — Georgetown C.C.
BROWN, DOUG — Erie Shores Golf and C.C.
CARMONDY, EDMUND — Red Run Golf Club
COLEIN, CAROL — C.J. Colein & Assoc.
COONEY, JOHN — Indianwood Golf Club
DeLUCA, DINO — Westbrooke Golf Club
EWASEK, JOHN — Shenandoah C.C.
GRAEF, CARL — Buckner, Distributors Group
GUINAN, DONALD — Davey Tree
HOWELL, DAN — Standard Contracting
HOPKINS, RONALD — Brookside G.C. of Saline
KNIGHT, PAUL — Core Electric
KOBOLDT, RUDOLPH — Cattails Golf Club
MAHANEY, DAVE — Brookshire Inn & G.C.
McMULLEN, Marc — Orchard Lake C.C.

D
B
B
D
D
E
B
B
D
E
E
E
A
E
D
A
D

NELSON, KEN — Sutton Creek G. & C.C.
NESBIT, ROBERT — Royal Estate Golf
PALLA, SAM — Oak Ridge G.C.
PLAGUE, MICHAEL — Green & Grow, Inc.
POLICHT, MARK — Inverness Country Club
REBAN, STEVEN — Great Oaks C.C.
RUNYON, RONALD — Arrowhead Golf Club
SHUKER, STEVE — Amturf
SKELTON, RODNEY — Pontiac Country Club
STEVENS, GARY — Belle Isle Golf Course
STASYNA, STEVE — Huron Oaks Golf & Rec.
SUMP, STEVE — Rouge Park Golf Course
WEAVER, LOWELL II — Oak Point Golf Club
WILLIAMS, DANIEL — Warren Valley G.C.
WEINENBACH, DAVID — Beech Woods G.C.
WOCHASKI, DEAN — American Golf

B
A
B
E
A
D
B
E
A
B
B
D
D
D
A

Total New Members: 33

Thanks to all the golf course superintendents who volunteered their facilities for our educational meetings in 1991. I would also like to thank all of the speakers and committee members and the other board members who helped to organize and run the meetings. This report was submitted by:

Steve Kolongowski, Co-Education Chairman
Mike Bay, Co-Education Chairman

Wilkie University March 2 - 5, 1992

Classes In:

- Turf Management
- Water Management
- Service Techniques
- Business Development

Who will benefit:

- Golf Course Personnel
- Irrigation Contractors
- Consumer Dealers
- Public Sector Employees
- Commercial Cutters
- Landscapers

Free catalog and class listing available January 6th at all three locations.



WILKIE

Turf Equipment Division, Inc.

Auburn Hills
1050 Opdyke Rd.
(313) 373-8890

Farmington Hills
30650 W. 8 Mile Rd.
(313) 476-3664



Sterling Heights
35320 Mound Rd.
(313) 939-3670

A sea captain and chief engineer were having an argument as to which one of them was the more important to the ship. Failing to agree, they resorted to the unique idea of swapping places.

The chief ascended to the bridge, and the captain dived into the engine room. After a couple of hours the captain suddenly appeared on the deck covered with oil and soot.

"Chief!" he yelled, wildly waving aloft a monkey wrench. "You'll have to come down here; I can't make her go!"

"Of course you can't," replied the chief. "I've just run aground."

Nobody likes to be ignored. One of the most important things you can do as a boss is to pay some personal attention to the people who work for you.

People need personal attention the way machinery needs oil and grease. They do a lot better work when they get it. Some people are so self-centered they need attention in order to function. If they don't get it for doing good work, they'll get it some other way.

How can you provide the attention people need in order to feel better and work better?

By noticing the work they do and complimenting them on good work or any sign of improvement.

By noticing work that really isn't up to their proper standard and asking about it — to see if there is anything you can do to correct the situation.

By chatting with them occasionally, and taking an interest in the world they live in, the world of which they are the center.

By appreciating how important it is that their jobs be done well, and pointing out to them how important they are to the company.

By occasionally giving them some special task or responsibility, something that makes them feel recognized.

By asking their opinions about work problems they are familiar with, and giving them a chance to express their ideas.

By listening when they bring up a personal problem, even when you can't do anything to help solve it. Pretended sympathy is always appreciated.

Keep in touch with the people who work for you — close touch — and never let a good thought die. When you think something pleasant or favorable about anyone, make a note of it immediately and be sure to tell them. Nobody gets too many compliments or too much appreciation. Most people get far too little. They'd be a lot happier, and do better work, if they got more.

Bits & Pieces, February, 1985

TURFGRASS INC.



Serving you better with . .

Technical information

Fungicide programs

Free timely delivery

. . . Quality products

<i>Fertilizers</i>	The Andersons, Lebanon Country Club, Nitroform, Turfgrass
<i>Chemicals</i>	Dupont, Ampel, Ciba-Geigy, W.A. Cleary, Chipco, Daconil, Mobay, Elanco, NAIAD, Dow, Monsanto, Bio Greenskeeper, Agri Diagnostics, Mallinckrodt, Nor-Am, Riverdale, Pana Sea, Miller, Agri-Plex 4X
<i>Seeds</i>	Northrup King Medalist Turf Products
<i>Spreaders & Sprayers</i>	Cyclone, Spyker, Back Pack, Wheely, Spray-Hawk
<i>Golf Supplies</i>	Lewisline, Par Aide, Standard, Fore-Par, Yankee, United Stockmen, Chix, Fox Valley
<i>Safety Equipment</i>	Mine Safety Equipment
<i>Soil Management</i>	Grid System, TerraFlow, TerraBond, TerraCover
<i>Markers</i>	Richway, Blazon

1-313-437-1427
Office

1-800-521-8873
(Michigan Only)

Rich Locke
Douglas Johanningsmeier
Keith Richards
Gene Johanningsmeier

BAD LUCK IN LAS VEGAS IS PAR FOR THE COURSE

When your luck goes bad in Las Vegas, a fast exit out of town is not unusual.

So it might be understandable that PGA golfer Mark Brooks played his final round of the Las Vegas Invitational in 1 hour, 39 minutes Sunday, cleaned out his locker and was on a flight home to Ft. Worth, Texas, before noon.

His luck had gone bad.

It turned on Friday, in the third round of this 90-hole tournament, after Brooks had played the first 36 holes 12 under par.

At the 17th hole of the Desert Inn course, he hit a shot into a palm tree. It didn't come down.

Brooks needed to identify his ball to avoid a lost-ball penalty. A cherry picker was summoned. Brooks was lifted into the air. He plucked eight balls from the palm — but none was his.

It was a lost ball. He made double bogey-seven on the hole.

Then, at the Las Vegas Country Club on Saturday, Brooks put his tee shot on the green on the par-three ninth hole, his last of the day.

He marked the ball and tossed it to his caddy to be cleaned. But the caddy missed it, and the ball went into the water.

Rules require that a hole must be completed with the same ball used off the tee. Brooks entered the water, shedding shoes, socks and shirt, and was completely submerged at times.

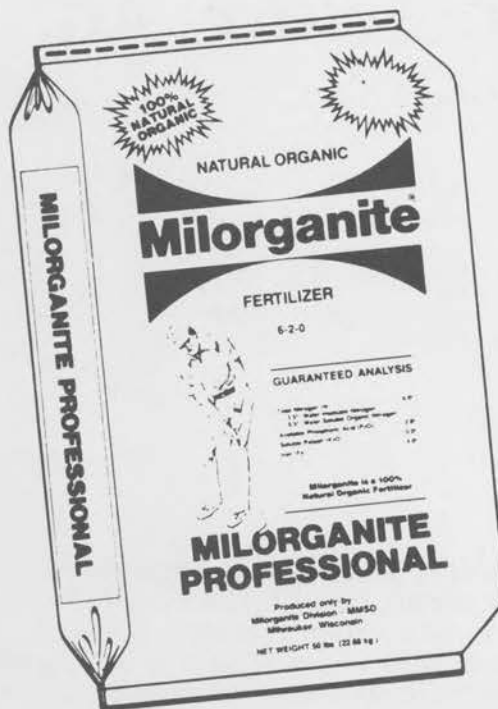
He found 18 balls. None was his. He acquired another two-shot penalty for finishing the hole with the wrong ball. Another double-bogey.

Brooks, winner of two tournaments this year, had scores of 67 and 65 in the two rounds before his luck changed. His scores on the last three were 74, 78 and 75. He finished last.

"When you're climbing trees and splashing around in the water, you know things are not going your way," he said.

From Morning Line
Detroit Free Press/Monday,
October 14, 1991

Golf Course Superintendents



Milorganite In 50 lb. Bags For The Professional



**Milorganite outperforms
other fertilizers for long-term
turf needs.**

**Non-Burning • Slow Release
Water Insoluble • Natural
Organic • Over 4% Iron.**

For the best turf... use the best fertilizer

MILORGANITE PROFESSIONAL

BENHAM CHEMICALS

24800 N. Industrial Drive
Farmington Hills, Michigan 48331

313-474-7474

1-800-482-6520

TOLL FREE (Michigan Only)

REGULATION 637. . .

A Law We Can Live With?

by Tim Doppel
Atwood Lawn Care

While this may not be the most engaging reading you've seen. . . it may very well be some of the most important. Please read my description of the various sections of the Regulation (there are 14 of them) and think hard about how this will affect your business. If you have any specific questions or concerns, you'll want to get a copy of the Regulation from the Department of Agriculture (MDA) to read the exact language and make your comments. You should also feel free to call me, and I'll do my best to explain what I know.

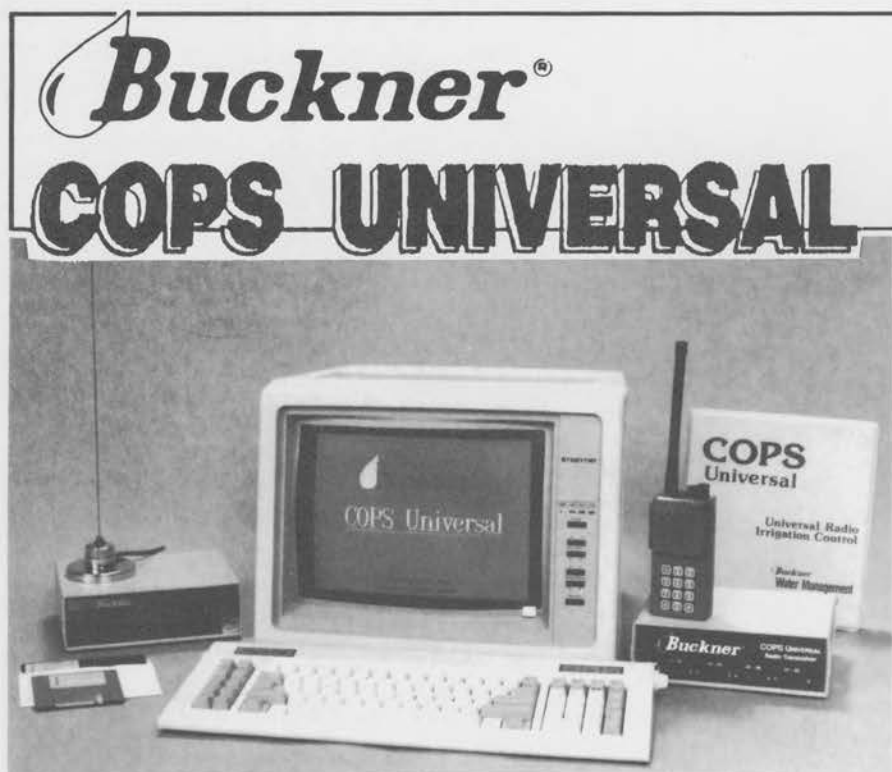
The following is the first in a two-part article regarding REGULATION 637. Next issue information regarding protective equipment, drift and posting will be provided. I will be presenting the contents of the pending Michigan Department of Agriculture Regulation 637. This is a very wide ranging rule that will affect nearly every aspect of how you conduct your business.

RULE ONE. . . Definitions

In this section, the various terms that are used throughout the document are spelled out. We will refer to the definitions as they apply in our discussion of the Regulation.

RULE TWO. . . Standards For Pesticide Use

This section deals with a great many small items



Gain control of any existing controllers, regardless of make or manufacturer!

Each COPS-Universal radio field unit has up to 42 stations per field unit. Ideal for retro-fitting parks, median strips, school grounds, and golf courses. COPS-Universal lets you change any field controller into a field satellite and manage your entire system from a central PC. COPS-Universal offers:

- Communication by repeating or direct radio. (No new controllers or communication wire.)
- Unlimited programs, unlimited start and run times to meet all of your water management needs.
- Freedom to use valves as you choose, regardless of hard-wiring constraints.

For a personal demonstration, contact:

CARL GRAEF
at 800-334-7011

Buckner
Water Management
By Design

DISTRIBUTORS GROUP

Your Irrigation Specialists

711 West Pickard Street • Mount Pleasant, Michigan 48858
(800) 334-7011 • (517) 772-5621 • FAX (517) 773-1880

relating to pesticide use. The rule, by definition, states that you must use a pesticide according to the label, but expands what that means. It now means that you can legally:

- apply at a lower rate than specified on the label.
- apply to control a pest not on the label, if the crop (grass) is listed.
- use any application equipment not specifically prohibited.
- mix pesticides with fertilizer.

The section also says you shall not use equipment that is leaking, should calibrate frequently, have functioning valves and not spray in weather that will cause drift to occur off the target site. There are no specifications as to what wind speed that is, so you are responsible for your own applications. In addition, you'll need to pay more attention to the areas around your spray jobs and whether there are any people or pets in those areas. If there are, and there is a possibility of drift, you'll have to take precautions to warn or protect those people. Also, it will be a requirement to have spill kits immediately available when using pesticides. That means that a spill kit will have to be in your trucks.

Finally, each of your trucks will have to have your company name and phone number prominently displayed on the sides. This will help the MDA identify those in our business who may not be licensed. Also, if you see someone doing something improper, this will help you identify the offender and help clean up our industry.

RULE THREE. . . Registry of Sensitive Individuals

This has to one of the most hotly debated issues in the entire Regulation. Although no one took issue with the need for those who are truly sensitive to pesticides to be afforded some protection, the main sticking point was how people can get their name on the Registry. It was decided by the MDA that a doctor's verification will be necessary, to reviewed by the MDA Toxicologist. The Registry will be published annually on March 15 and mailed to all licensed applicators. The list will include the addresses of those homes adjacent to the sensitive person and a contact phone number and address.

What you will have to do is examine the list of addresses and determine if any of those are customers of yours. If they are, you will have to provide the sensitive person with pre-notification the day before, or a hand delivered letter at least 24 hours in advance. If you attempt a phone call and do not get an answer, you must leave a notice at the home at the time of application.

The information you'll have to provide will include your company name, the approximate time of the application, where you'll be doing the application and the common names of the products scheduled to be applied. As long as you have met the requirements of the pre-notification, the sensitive person cannot deny you from making the application.

RULE FOUR. . . Mixing/Loading and

RULE FIVE. . . Washing and Rinsing Operations

These sections will be of great interest to everyone. The bottom line is this: You must have a system in place to contain any and all spillage of pesticides during your loading, mixing and all water from your washing operations. There is no size exemption and no quantity exemption. It must be made out of an impervious material (not asphalt), include a tank to store the spillage, have an emergency shut off switch within 30 seconds of the operator and, if outdoors, be able to contain a six inch rainfall as well. If you want separate stations for loading and washing, that would be permitted with some minor differences being allowed.

In my estimation, these two sections will be the most extensive parts of complying with Regulation 637. However, everyone will have to do it; therefore it is not any more of a burden to one company than to another. The committee worked very hard to make the rule a performance based standard, not a list of specifications that we would have to follow. We therefore have some flexibility as to how we can design and implement our individual wash/load stations. As long as it does the job, MDA cannot deny your use of it. We all have Bob Brown of Michigan Lawn Spray to thank for this innovative approach to what would have been a much bigger problem.

from **The Landsculptor**,
September, 1991



HUGGETT SOD FARM, INC.

• TOP QUALITY SOD •

NUGGET + II (BLUEGRASS BLEND)
GRADE A OR COMMERCIAL ON PEAT OR
TOP SOIL BASE.

SHADE MIX (BLUEGRASS, FESCUE MIX)
GOOD ON SANDY SOILS OR IN SHADE.

PENNCROSS BENT GROWN ON WASHED
MASONARY SAND OR LOAM SOIL.



• DELIVERY •

Michigan - Ohio - Indiana

• SHADE & ORNAMENTAL TREES •
• BULK SPAGNUM PEAT •

Ph: 517-635-7482

4114 East Marlette Rd. • Marlette, MI 48453

GOLF DAY 1991

Committee members: Jay DelCamp, Gary Thommes, Kury Kraly, Jim Eccleton, Paul Kolbe, Mike Bay, Doug Johanningsmeier, Carey Mitchelson, Keith Richards, Ken DeBusscher.

The Big Event for 1991 was held on October 7, 1991 at the following clubs:

**Country Club of Detroit
Forest Lake Country Club
Meadowbrook Country Club
Pine Lake Country Club**

Many thanks to the clubs and club officials allowing us to offer four great golf courses to host our 26th Annual Big Event. There were nothing but praises on the conditions of the courses and the hospitality given to each and every one of the 361 players. Yes, we lacked only 39 players from filling the entire field.

As they did last year and every year prior, the vendor population did their share with donations toward the MTF, not only giving \$150.00 each, but also many of our vendor friends sponsored and played in the tournament. Thank you again for the generosity of the vendors.

The format of the golf event stayed the same, using the Stableford System. However, prize distribution was changed. The committee decided to have individual course prizes which made for an exciting day. This format will be reviewed again next year.

The Awards and Dinner were held at Roma's of Bloomfield, and it was again a complete success, and with the additional bar, the lines before dinner were eliminated. Golf prizes were given out, and many nice door prizes were won by lucky ticket holders.

After the donations have been added, and the expenses subtracted, I am pleased to announce \$20,000 will be given to the Michigan Turf Foundation.

Next year, three tentative courses are being considered. They are Birmingham Country Club, Tam O'Shanter, and Orchard Lake Country Club.

I must give many thanks to the job done by our Golf Day Committee, including Gary Thommes, Carey Mitchelson, Mike Bay, Ken DeBusscher, Doug Johanningsmeier, Keith Richards, Kurt Kraly, Paul Kolbe, and Jim Eccleton.

Thanks to the participants for another great day and we are looking forward to the 1992 Big Event.

Gone Fishing. Thanks to 7-3-22 with Team.*



For controlling grassy weeds and restoring potash levels, there's no more economical, effective and time-saving combination than Country Club® 7-3-22 with Team* pre-emergence herbicide.

So start applying an advanced herbicide and fertilizer in just one step. And take advantage of all that free time for more leisurely pursuits.

Country Club
7-3-22 LEBANON®
WITH TEAM*

*Trademark of DowElanco.

Country Club® is the Registered Trademark of Lebanon Chemical Corporation.

Distributed By:

Benham Chemicals
(313) 474-7474

Turfgrass, Inc.
(313) 437-1427

Tire Wholesalers Co., Inc.



- As our name implies, we are a wholesaler of tires.
- We are an established business, having been in business for over 19 years.
- We deliver.
- We have UPS service daily.
- We guarantee what we sell.
- We want your business.
- We have a huge inventory of Passenger, High Performance Truck, Trailer, Motorcycle, Carlisle Lawn & Garden, Industrial Tires & Tubes, Shocks, Struts, Custom Mag Wheels and Accessories, all in stock for immediate delivery.

CORDOVAL **GRAND PRIX** **ARMSTRONG**

PIRELLI **CARLISLE**

19240 West 8 Mile Road
Southfield, MI 48075

303½ Hawthorne Street
Cadillac, MI 49601

Phone: (313) 354-5644

Phone: (616) 775-6666

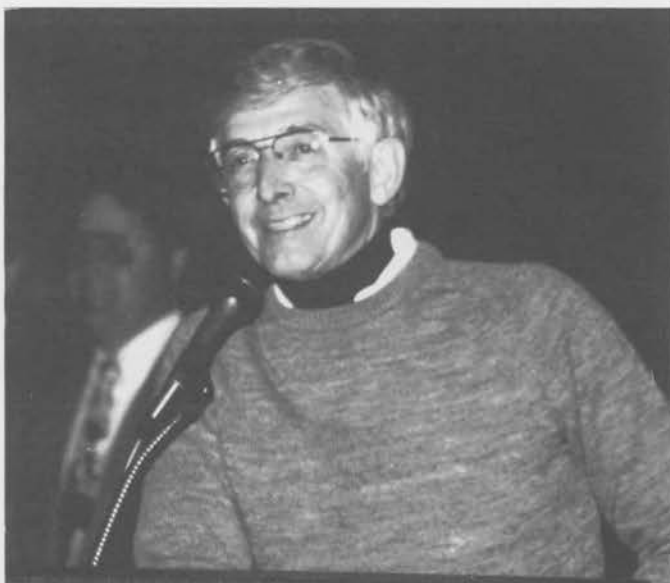
Thank you for your past and present business.



Jay DelCamp, left acknowledging Ron Abbott from Bogie Lake Golf Club for his tremendous support of previous Golf Day's.



CAREY MITCHELSON, middle, and GARY THOMMES, right help check in a Golf Day participant at Meadowbrook Country Club.



DR. PAUL RIEKE addressing the audience at Roma's of Bloomfield on Golf Day, 1991.



One of the lucky winners of a door prize at Golf Day, 1991.

CURRENT ISSUES AFFECTING PESTICIDE APPLICATORS

Ag Worker Protection Rules: MDA is currently writing rules governing posting, training, exposure prevention, pesticide re-entry intervals and poison treatment centers for workers involved in hand harvesting operations. EPA is also drafting rules to address the same issue on a broader scale — all farm workers, including greenhouse and forestry workers.

Bulk Pesticide and Fertilizer Storage: MDA has drafted rules and begun the rule-making process to address primary and secondary containment, record-keeping, inspection, maintenance, discharge response and training at bulk pesticide and fertilizer storage facilities.

National Fire Protection Association Code 30 and the Rules for Storage and Handling of Flammable and Combustible Liquids: The state Fire Marshall's office has drafted rules dealing with the storage of flammable and combustible liquids, including many pesticides. These rules contain provisions for storage, handling, container size and warehouse specifications.

Fertilizer Law (Act 198): MDA is currently in the process of drafting amendments to the fertilizer law. Provisions will deal with composted materials, slowly available nutrients, tonnage reporting and tracking and adulteration.

Regulation 636: MDA has developed a registered technician program for those persons who apply pesticides for a commercial purpose as a scheduled work assignment on the property of another person. Applicants must pass a "Core" exam and receive verifiable, category-specific training from an MDA approved trainer. Registered technicians may not purchase restricted use pesticides.

Regulation 637: MDA has drafted a "Pesticide Use" regulation that includes provisions for mixing/loading and wash/rinse pads at commercial facilities; drift management plans; disposal of pesticide-containing materials and communication of risk-benefit information to customers.

Groundwater Legislation: MDA is coordinating and effort to develop legislation that will protect the state's groundwater. The statute will likely include provisions for voluntary farm practice assessment, groundwater monitoring, vulnerable aquifer identification and protective management strategies. Such a program is necessary in order to meet federal requirements for comprehensive groundwater protection plans in order to retain product registrations.

Preemption of Local Ordinances: A recent U.S. Supreme Court decision validated local ordinances involving pesticide use. The decision, however, allows states to enact preemptive legislation. S.B. 643 has been introduced — the bill would amend the Pesticide Control Act to include preemptive language.

1990 Farm Bill: The 1990 Farm Bill provided that farmers would be required to maintain certain pesticide records. USDA is in the process of developing rules to implement this section of the Farm Bill.

Right-To-Farm: MDA has developed generally acceptable pesticide, manure and nutrient management practices which, if implemented by producers, protect them from nuisance lawsuits and negate the need to obtain permits under a variety of environmental statutes.

CONTINUED PAGE 24



Turf Chemicals Inc.

1011 E. Main
P.O. Box 451
Owosso, Michigan 48867
Phone: (517) 725-7145

**FOR ALL OF YOUR FERTILIZER,
CHEMICAL AND GRASS SEED NEEDS**

EXPERIENCED, DEPENDABLE
PEOPLE TO SERVE YOU

* RUSS HANCOCK	* LOU BECKMAN
* JIM HYDE	* JAY SIDDOCK
* FRED MILLER	* TED KASEL

SHOW & TELL



The annual GCSAA convention is the biggest show on earth for golf course management professionals.

It's your chance to meet your peers from all over the world, exchange views, make invaluable contacts and discover what's new in techniques, equipment, products and theory.

It's the largest trade show in golf course management, with booths by virtually every supplier in the business. And it's a learning experience, too, with sessions and presentations by leading industry specialists, progressive fellow superintendents and outstanding university researchers.

Once a year it's the one place to be for anybody who cares about keeping golf green.



WE KEEP GOLF GREEN.

913-841-2240

Wm.F.Sell & Son, Inc.

SINCE 1923

RENTAL
SALES - SERVICE



- ★LOADERS ★SWEEPERS
- ★TRENCHERS ★MOWERS
- ★ROTARY CUTTERS
- ★BACK HOE DIGGERS
- ★BACK FILL BLADES
- ★POST HOLE DIGGERS

JOB TAILORED EQUIPMENT

COMPLETE LINE OF
MATERIAL HANDLING
& FARM EQUIPMENT

CALL

282-5100

16555 TELEGRAPH RD. - TAYLOR
1 Mile South of Eureka

*Developing and producing
the highest quality seed
possible has been a
Scotts® tradition
for more than
100 years.
No one in
the seed in-
dustry can
match our
standards
for seed
purity.*



Ask your ProTurf® Tech Rep for details the next time you need to order seed.



John Skaife
Technical Representative
ProTurf Division
The O.M. Scott & Sons Company
9467 Mandon Road
Union Lake, Michigan 48085
Telephone: 313/360-2595

Current Issues, cont.

Coastal Zone Management Act/Clean Water Act: Best Management Practices are being developed under both of these federal acts that will impact the agriculture sector. MDA has expressed concern over the lack of coordination between agencies in the development of the practices.

Endangered Species Act: EPA is developing the strategy to fully implement the Endangered Species Act. The strategy will require many pesticide product label changes requiring users to obtain county-specific pamphlets identifying endangered species habitats and amendatory product use directions. Michigan is serving as a pilot state with MDA designated as the lead agency.

Pesticide Container Handling/Design: EPA and MDA will be promulgating rules in the near future to address the handling of pesticide containers including residue-reduction, recycling and refilling. Container design rules will include performance specifications to ensure their integrity.

Pesticide Re-Registration: EPA is near the middle of its 9-year project to re-register and fill in "data gaps" for older products. This effort has resulted in the cancellation of many compounds. Of particular concern is the loss of compounds for "minor use" crops as manufacturers choose not to pay for required laboratory testing data or reregistration fees.

Food Safety: At the federal level, food safety legislation has been proposed that would establish uniform standards for pesticide residues on raw and processed foods. The National Academy of Sciences is also expected to release a report in the near future regarding food residues and young children. MDA's food safety program has been established to obtain state-specific data and effectively respond to these concerns.

Great Lakes Protection Program: EPA has initiated a program to protect the Great Lakes from negative impacts resulting from non-point source chemical pollution. Lake Michigan is the first Great Lake targeted for this program and will include unusable chemical pickup activities in the Lake Michigan watershed areas.

Amendments to FIFRA Regulation: Amendments to the federal pesticide certification rules will require additional supervision and training of pesticide applicators. MDA has already enacted Regulation 636 to meet many of the requirements.

LESCO HAS IT!

**Everything you need
for professional
turf management.**

- Fertilizers •Control Products •Seed
- Irrigation •Equipment •Replacement Parts
- Golf Course Accessories •Safety Products
- Service Brochures • Low Voltage Lighting

(800) 321-5325
Your Growth Partner

LESCO, Inc., 20005 Lake Rd., Rocky River,
Ohio 44116

**Big turf disease control
now in a giant economy
size.**

**New 2.5 gallon
no plug jug**



RHONE POULENC AG COMPANY

BOB DUGAN

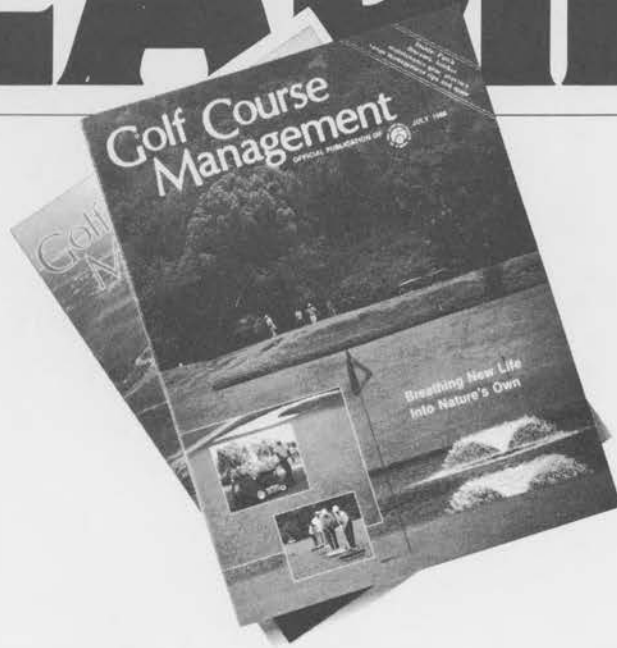
Chipco Turf & Ornamental Specialist

P.O. BOX 398

ROMULUS, MICHIGAN 48174-0398

(313) 782-0323

REQUIRED READING



Golf Course Management is more than a magazine, it's the bible of your industry, filled with case histories, valuable tips, informative advertising and news of technical breakthroughs.

It comes to you automatically with your GCSAA membership. And it also goes to club presidents, green committee chairmen and other golf course officials, helping to enhance your professional status with the people who count the most.

It's required reading for anyone who's serious about the big job of keeping golf green.



WE KEEP GOLF GREEN.

913-841-2240

MBCGCSA/A PATCH OF GREEN SURVEY

PLEASE CHECK THE APPROPRIATE BOX FOR EACH CATEGORY.

1. How did you receive this issue of POG?

1. ☐ It is part of my MBCGCSA membership benefits.
2. ☐ I am a subscriber.
3. ☐ This issue was given to me by a member or subscriber.
4. ☐ I am an advertiser.

NAME _____ TITLE _____

COMPANY _____ HOW LONG AT COMPANY
IN CURRENT POSITION _____

ADDRESS _____

CITY _____ STATE _____ ZIP _____

PHONE _____

PLEASE CLIP AND RETURN TO:

MBCGCSA/POG SURVEY

31823 Utica Road
Fraser, Michigan 48026

YOUR COOPERATION IS GREATLY APPRECIATED



DETROIT CONCRETE PRODUCTS CORPORATION

MacInnis Bros.

Asphalt Mixes • Asphalt Paving

- GOLF CART PATHS
- PARKING LOTS • ROADS

4900 McCARTHY
MILFORD, MICHIGAN 48042

BILL MacINNIS
Office 685-9590
Plant 476-5360

AMERICAN MARINE
Shore Control

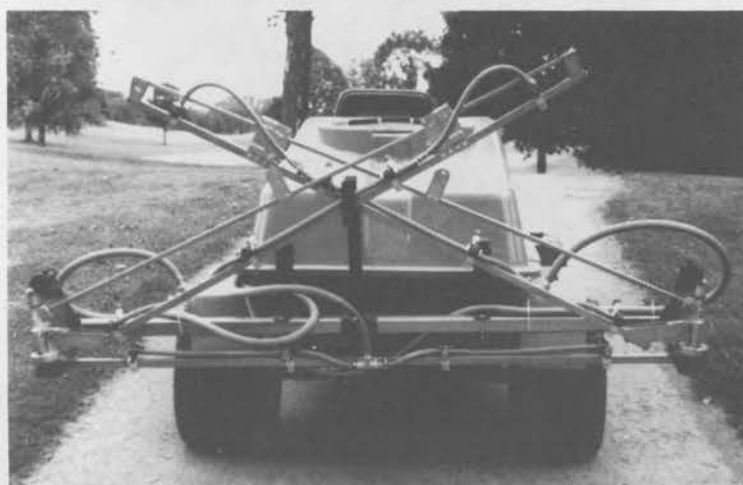
BRIDGES • DAMS • BOARDWALKS

SEAWALLS — Steel • Wood
PVC C LOC
Boulders

Complete Jobs or Products Only
FREE QUOTES — (313) 887-7855

Spray Star 1600

SMITHCO Standards You Trust
SPRAY STAR



PUMP:

High volume centrifugal,
60 gpm, 0-70 psi

OR

3-Cylinder piston,
diaphragm, 25 gpm, 0-200 psi

CONTROLS:

Standard with super control
valve system; master "on/off"
individual boom controls

OR

Raven 440 computerized
sprayer control system

POWER:

18hp twin-cylinder Kohler
Magnum gas engine
"2-Year Warranty"

TRANSMISSION:

Manual syncro-mesh;
3-speed forward, 1-reverse

CONFIGURATION:

4-Wheel,
Front Wheel Steering,
Rear Wheel Drive,
60" Wheel Base

COMPARE TO THE COMPETITION:

Ultra low profile tank design for visibility and stability.

The strongest spray boom ever built, manual or hydraulic control.

Dual ground speed control [no more foot clutch].

160-Gallon Fibreglass tank; low profile, 5-year guarantee.

Wide rear flotation tires 24x1300x12 Super Softrac available.

SMITHCO Torque Master automatic clutch [no more tricky foot clutch].

LAWN EQUIPMENT SERVICE & SALES

151 N. PERRY
PONTIAC, MICHIGAN 48342
(313) 858-7700



Until now, most utility trucks have been better known for carrying repair bills than materials. Our new line of four utility trucks—built Jacobsen tough from end to end—changes all that.

For example, the 2315 has a durable 23.5 hp liquid-cooled diesel, 5-speed transmission with reverse and heavy-duty automotive-type clutch, creating a new standard of dependability.

The 2315 packs a 1,500 lb payload. Unlike other utility trucks, it comes complete with heavy-duty hydraulic dump box, removable side panels and tailgate, implement PTO, lights, full hydraulics and complete instrumentation—standard.



Our rugged line also includes the 20 hp gas model 2015 and the 1,000 lb payload, gas powered 810 Express and electric 610 Express. For maximum versatility and productivity, the 2315 and 2015 can be out-

fitted with sprayer, top-dresser, aerator and spreader attachments. If you already have attachments, our universal mounting kit lets you use them on either truck.

To see them in action, ask your Jacobsen distributor for a demonstration today.

**JACOBSEN
TEXTRON**

Jacobsen Division of Textron, Inc.

THE SHARPEST THINKING ON TURF.

W.F. MILLER COMPANY

GARDEN AND LAWN EQUIPMENT

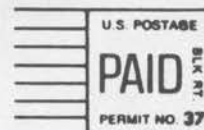
25125 TRANS-X

NOVI, MICHIGAN 48050

(313) 349-4100

**BUILT BECAUSE OTHER
UTILITY TRUCKS JUST DON'T
GO FAR ENOUGH.**

"A Patch of Green"
31823 UTICA ROAD
FRASER, MICHIGAN 48026



TEXAS A & M UNIVERSITY
DR. JAMES BEARD/DEPT. S.C.SCI.
COLLEGE STATION TX 77840

