

A PATCH OF GREEN



FALL 2002



INSIDE: GCSAA Annual Seminar Information
And Registration Form; Holiday Party Update

NO MONEY, NO EQUIPMENT, NO PROBLEM!



JOHN DEERE
CREDIT

FALL FINANCING PROGRAMS

Low 6.99% Interest Rate

No Payments until April 1, 2003

Seasonal Payments are Available

Program availability based on credit approval.
Offer ends October 15, 2002

Fall Demonstrator Sale

Watch Your Mailbox in
September for our
Annual Catalog and
Great Savings!



JOHN DEERE ULTIMATE AERIFICATION PACKAGE

Aercore 1500

Aercore 800

TC125

Progrator 2020
and 4510 Tractor

\$ 2,000 per Month



42 Monthly Payments Beginning April 1, 2003
with approved credit from John Deere and Fall Financing Special Above

WEINGARTZ GOLF & TURF

Novi
46495 Humboldt Dr.
888-453-8873
248-295-0105

Cedar Springs
11875 Northland Dr.
877-465-9040
616-696-2913

www.weingartz.com



JOHN DEERE



A PATCH OF GREEN

Greater Detroit Golf Course
Superintendents Association

The Official Publication of the Greater Detroit
Golf Course Superintendents Association

Officers President

Mark A. McKinley

Vice President

Roland Abbott, CGCS
Committees: GCSAA Coordinator/
Certification Rep., Finance

President Emeritus

Roy A. Szyndlar, CGCS

Secretary/Treasurer

Robert A. King
Committees: Co-Education,
Historian, Finance

Directors

Dan Billette
Committees: Co-Special Olympics,
Co-Social, Co-GAM Seminar

Scott Ford
Committees: Co-Golf Day,
Co-Awards

Mike Fouty
Committees: Co-Golf Day,
Co-Michigan Room, Co-Awards

Fritz McMullen
Committees: Membership,
Co-Social, Finance

Brian Schwehofer
Committees: Co-Special Olympics,
Co-Education

Jon Shreve, CGCS
Committees: Co-GAM Seminar,
Co-Michigan Room, Welfare

Tim Dörner, CGCS
GCSAA Liaison, Voting Delegate,
Editor/Publicity

Doug Johanningsmeier
Vendor Liaison

Contents

5 On Par With The President
6 Detroit Tiger Baseball Game
7 & 8 View From M.S.U.
9 Member Viewpoint - Spill, Drill
11 Clarence Wolfrom, Sr. Classic
12 Holiday Party
13 & 14 Member Viewpoint - Riding Out...
15 Watching Out For West Nile
17 & 18 GCSAA Education Seminar
19 & 21 ASGCA Memo
23 July Board Meeting
24 August Board Meeting
25-27 Roster Changes
28 New Member Roster
29 Calendars of Events
30 New Member Application

**Contact for
GDGCSA
Information**

Kate Mason
Executive Secretary

GDGCSA
P.O. Box 173, Troy, MI 48099
(248) 362-1108
Fax: (248) 362-1736
E-Mail: gdgcsa@aol.com

Printed by: Schaltenbrand Printing Company
16315 Harper Avenue
Detroit, MI 48224
(313) 882-4343

Greater Detroit Golf Course Superintendents Association

Announces

The Heritage Award

The Award

Two awards are available at \$1,000 each.

The basis for selection is an essay competition and the applicant's level of involvement with student or community affairs.

The association reserves the right to cancel the award if there is an insufficient number of applicants.

Eligibility Requirements

- Must be a son or daughter (dependent as per IRS definition) of a current GDGCSA member.
- Must have successfully completed high school prior to submitting an application.
- Must be enrolled in a post secondary educational institution on a full-time basis. ***Applicant's chosen field of study must be unrelated to golf course management.***
- This award is not offered to students in post graduate college curriculums.
- Must have exhibited involvement in student activities or community service.

Application

Please call (248) 362-1108 to request an application.

The DEADLINE for submitting applications is NOVEMBER 1, 2002

on par ^{with} _{the} president



Every once in a while I wonder why every golf course superintendent in the metropolitan Detroit area isn't a member of our association. I get so many benefits from belonging to this group that its difficult for me to imagine why any superintendent wouldn't want these same benefits.

One of the most important things in it for me is to talk to people who understand the uniqueness of the world we live in. Let's face it, ours is a singular and solitary profession.

If you're in a law firm or a medical practice you can usually talk face-to-face with your fellow professionals about common problems on a regular basis. But in our business, we often operate alone and when times get tough, the job can be very lonely. So it's great for me to know that at least once a month I'm going to get together with people who really know what I'm talking about and who can offer support and advice or just plain friendship when I need it.

These are people who are most likely experiencing similar disease, pressure, and weather conditions. They've dealt with my problems, and I've dealt with theirs. In most cases we share a similar ethic and a strong sense of responsibility to our clientele. We have a lot in common and I know that the guys I've gotten to know at meetings are available to talk in between meetings. I can't tell you how valuable that can be when you need a "sounding board" or informed opinion.

So I'm asking everyone who reads this to do one thing. If you are already a member, please reach out to one of your peers who is not and invite him or her to one of our meeting this year as your guest. If you are not currently a member, please accept my personal invitation to attend one or more of our remaining meetings. You can call me personally to reserve your place. My number is (734) 649-3126. I will do everything possible to make you feel welcome and comfortable with a group of people who have "walked a mile in your shoes."

Sincerely,

A handwritten signature in cursive script, appearing to read "M. S. McKilley". The signature is written in dark ink on a light background.

DETROIT TIGER BASEBALL GAME 2002

Some of you "Old Time Members", or for that matter "Medium Time Members", may recall the family picnic that the association hosted for many years. Well, one thing led to another and over time the event fizzled out. Many ideas were discussed to replace the picnic and the general consensus was to start trying different things every year to attract different groups of people for the summer social event. This seems to be working out rather well. Last summer the group took a trip on the Portofino Friendship Boat along the Detroit River. This event was well attended, and if you were there I'm sure you would agree that this was a unique opportunity to do something different.

This year we decided to try a Detroit Tiger Baseball game, and it was great! One hundred people were part of our group in the upper deck reserved section on July 12th. Hot dogs, pop, beer, peanuts and pizza were everywhere. All the kids in attendance received a souvenir ball cap that they displayed proudly. The game was a good one, with the Tigers actually winning, and camaraderie was high amongst family, friends and peers. After the game, fireworks lit up the Detroit skyline in what was a most impressive display. Many positive comments were shared about this year's summer social event. If you were unable to attend, be sure not to miss next year's adventure; it's sure to be a hoot!

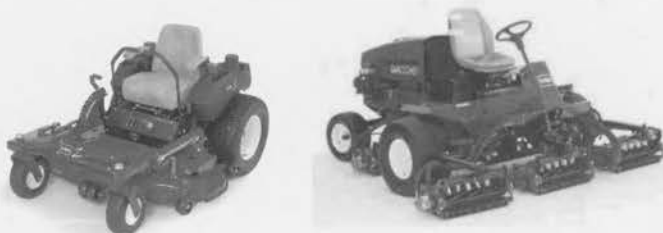


A Tradition of Dependability
And Service

Spartan 
Distributors

*487 W Division St.
Sparta, MI 49345*

*1050 Opdyke Rd.
Auburn Hills, MI 48326*



Phone: 800-822-2216



Count on it.

Stewardship News and Views

Gregory T. Lyman
Turfgrass Environmental Education Specialist
Michigan State University

Water Issue Keeps Dripping

I reported to you in the spring about a package of bills from both the Michigan Senate and House of Representatives that were designed to create a new permit system for the installation of water wells or the increased use of water from your existing wells. The word on the street is that these bills will never make it out of their internal committees and don't have a chance to become law. But they have been very effective in making user groups sit up straight and consider the future. On the surface this debate comes as a bit of a shock, as we live in the water wonderland and have never been pressed to control our consumption in the past. Well, this issue is more about the protection of our water resources here in Michigan rather than it is about the restriction of water use. Consider this....the water in the Great Lakes is not ours. That's right; the water is a national resource and a tradable commodity. Try to restrict its use to folks outside the Great Lakes Basin and you'll get the US Constitution thrown at you and thrown in jail for protectionism. The use of water cannot be regulated any differently outside the Great Lakes Basin than it is inside the basin. Therefore, the current theory is that if we impose some stringent guidelines on the use of the water in Michigan, it would be virtually impossible for users outside of the basin to deal with. This is a very important public policy issue and, hence, it has become a political issue as we stare down the pipe toward November 5. Here's the skinny. Folks are hoppin' mad that Nestle Foods has put a Perrier Ice Mountain water plant in Mecosta County and are selling Michigan water throughout the central US. In addition, folks in the Saginaw Bay area are playing out the Hatfields and McCoys in court over agricultural irrigation wells allegedly drying up some neighboring home wells. Add to that the fact that the arid southwest U.S. is looking for new water sources since they already dried up the Colorado River, and President Bush has vowed to help them find some. Well, if you wrap this into a big snowball, pretty soon you discover that the use of irrigation water on our golf courses is tied to a water crisis

throughout our nation. Pick up a handful of Golf Course Management magazines from any time over the last 10 years and see how many of them feature an article about water. Again, most of us never noticed because we are water rich, present rainfall situation notwithstanding.

So How Are We Involved

The Michigan Department of Agriculture has commissioned a group to develop a document that describes how water is properly used for irrigation purposes and invited the turf industry to be part of this committee. GDGCSA President Mark McKinley has agreed to serve as an advisor to that committee. He joins the other three regional golf course associations, along with some industry supplier professionals, on that advisory panel. The intent is to create this document within the next year so it can be used as a guidance document for all golf course properties and also by legislators as they craft the next set of water use bills in the near future. Stay tuned and give Mark a high five next time you bump into him.

Stewardship Workshop Dates

The Michigan Turfgrass Environmental Stewardship



Mr. Keith Creagh, Michigan Department of Agriculture, Senator Ken Sikkema, Ms. Kate Thomson, Michigan Golf Course Owners Association (MGCOA) and Mr. Greg Lyman, MSU participated in a panel discussion on the water use bills at a July MGCOA meeting in Kent County.

Program has set four workshop dates for the upcoming fall. They are:

- November 8, 2002 - Black Lake Golf Club, Onaway
- December 3, 2002 - Warwick Hills Golf & C.C., Grand Blanc
- December 5, 2002 - Watermark Country Resort, Grand Rapids
- December 17, 2002 - Wyandotte Shores Golf Course, Wyandotte

Contact Greg Lyman, Marc McMullen or Debbie Swartz at 517-355-8361 for more information.

Turf Grass Drainage Pays



- Less Flooding
- Shorter Rain Closing
- Healthier Grass
- More Cart Revenue
- Lower Maintenance Cost
- Better Course Appearance

517-628-8001

Water Management Specialists, Inc.

Dennis Rector • 1596 S. College Rd. • Mason, MI 48854



- New Cart Path Construction and Maintenance
- Parking Lot Paving and Repair
- Many Golf Course references available
- Office (734) 721-4442
- Fax (734) 721-2006

39571 Michigan Ave. • Canton, MI 48188

Spill Drill! Spill Drill! Spill Drill!

By Fritz McMullen

Golf Superintendent, Forest Lake Country Club

"Help! Help! Help! There has been a 30 gallon drum of gasoline dropped in front of the tennis house on the driveway and there is gas leaking out of the drum onto the driveway. This is to Jim...are you out there? Over."

"This is Ron at the 1st tee and I hear you on the radio. We will get the spill response barrel right down to you. We will get Jim from the golf course maintenance staff on the radio and get down to help you."

Jim's and Ron's staff meet at the spill in the driveway. The employees have gotten the spill contained with a sand dike and they have started to use kitty litter to soak up the gas spilled out of the 30 gallon drum. About 5 gallons had spilled in the last 10 minutes and the spill has been stopped. It had taken about 10 minutes to get the spill under control and everyone felt grateful that the staff had been trained to handle this situation in a safe and professional manner.

This has just been a SPILL DRILL at the course by the Environmental Committee. We have been having these practice drills for the last several years. They are always unannounced and can be anywhere at the club and at any time. We have had them at the cart barn, at the pool, at the gas pump, at the kitchen and at the golf course maintenance building. No place is sacred, and all departments are involved in this exercise. The Environmental Committee has been active at our club since about 1990. It was first started to help the golf course superintendent sort out all the new environmental issues of the early 1990's.

- 1). Fuel Storage
- 2). Certified Pesticide Technicians
- 3). Chemical Storage and Loading Pads
- 4). Improved Record Keeping

At first this committee was only involved with the golf course and me as the golf course superintendent. They were very helpful in getting the Board of Directors to understand that most of the new programs that we were introducing to them and the club were programs that would make us pro-active and on top of many environmental issues the club would have to face in the near future. The committee would review all presentations and costs and make recommendations to the Board of Directors on how to implement these programs. This was very helpful for me as the golf course superintendent to

have a committee and not just me to implement new programs and costs to the club. Now this committee looks at all different parts of the club and all the different departments. Some of the programs that we have installed are:

- 1). C.P.R. for all of our staffs
- 2). Defibrulator training for our staff
- 3). Fire Extinguisher training
- 4). Tornado Drills
- 5). Spill Drills

These drills really work for training employees for emergencies at the club and in everyday life. They make a hydraulic leak get taken care of faster and more efficiently because we review these possibilities on a regular basis. We have had employees use C. P. R. successfully in emergency situations and at the club to save lives. These exercises help build unity in the staff. They have learned to work together with each other from different staffs in the club for the good of the total club. This has helped make us a better working staff.

This committee has been a great help for me as the golf course superintendent because it isn't always me going to the Greens Committee or the Board of Directors and sounding the alarm on a new regulation or a new environmental program. I advise the committee of new regulations and programs and together we make recommendations to the Board of Directors. The Environmental Committee has been the driving force in our club being a member of the Environmental Stewardship Program of Michigan, and with their support we have become a Certified Course.

I would recommend the establishment of an Environmental Committee at a golf course for the benefit of helping the golf course superintendent in reviewing and presenting new state and governmental regulations to the club. I think we need the members of the club to make the decisions on these regulations and I think we have the responsibility to keep them up on all the new regulations and up-coming laws.

Perhaps you should consider an Environmental Committee at your course to help keep up with all the new regulations and help you prepare for any spills or accidents that might come along.

NEW MEMBER SERVICE

Accepting Credit Cards

Dear Members,

To expedite and simplify payment procedures, Greater Detroit is pleased to now accept your credit cards for payment of the following:

Monthly Meeting Fees (Honorary & Educator Complimentary)

Membership Dues (Class AA, Retired, Honorary & Educator Complimentary)

Job Referrals (Online Billing available)

Equipment Flyers (Online Billing available)

Advertisements (Online Billing available)

The following information must be provided with each Entry Form, Reservation Form or Invoice:

Card type: Visa Master Card AmEx

*Card Name (Your name? or Your club? or company?)

*Card Address (To what address does the bill come?)

The correct Card Name and Card Address are vital to validating the card within the system we are using.

Card Number and Expiration Date

We will accept this information via the following:

Mail: GDGCSA, P.O. Box 173, Troy, MI 48099

Email: gdgcsa@aol.com

Fax: (248) 362-1736

**If you have any questions,
please call Kate Mason (248) 362-1108**

2002 Clarence Wolfrom Sr. Classic

September 17th 2002

By Robert King

"Oh boy", what a great day for a golf outing. Sunny, low humidity and 79 degrees had many smiling from ear to ear. About 50 members and their friends left their course and jobs behind to participate in our annual fall classic at Maple Lane Golf Club in Sterling Heights. Our host, Paul Kolbe, had the century old course in good condition, considering the severe drought that has plagued most of us.

The old course was a bit dry, but that just provided a longer tee shot. Many players took advantage of the extra distance, with several balls reaching the 300 plus yard, par 4 16th hole in one. One player, who we will call DP, managed an eagle 2 at the 16th, but chose not to enter the skins game. Maybe next time, DP. The greens were in great condition and so were the mature trees lining each hole, many of which I hit on several occasions.

We had several rounds near 80 or below. One of those players was this year's Wolfrom Classic winner, Doug Mozal. He shot an actual 80, with a handicap of 20, giving him a net score of 60. Bill Klick also shot a 60 with his 26 handicap, so we went back to the 18th hole, and Doug Mozal became the winner. Congratulations to Doug, as well as all of the other winners listed below.

Immediately following golf, we were served a delicious meal of roast beef, chicken, mostaccioli, potatoes, salad and drink. Professor Kevin Frank, from Michigan State University, provided a research perspective of the sloping green and its effect on our profession today. We wrapped up by 6:00 p.m. and many were home by 7:00 p.m. We look forward to next year and hope many more will attend. We missed Clem Wolfrom, Jr. this year. He was playing golf in Ireland.

Clarence Wolfram Classic Winner

Doug Mozal: 80-20=60

2nd Place Low Net Winner

Bill Kiick: 86-26=60

1st Place Low Gross Winner

Dr. Kevin Frank - 70 actual

2nd Place Low Gross Winner

Scott Ford - 70 actual

Closest-to-the-pin: Hole #3

Eric DeLano

Closest-to-the-pin: Hole #5

Ron Abbott

Closest-to-the-pin: Hole #16

Eric DeLano

Straightest Drive

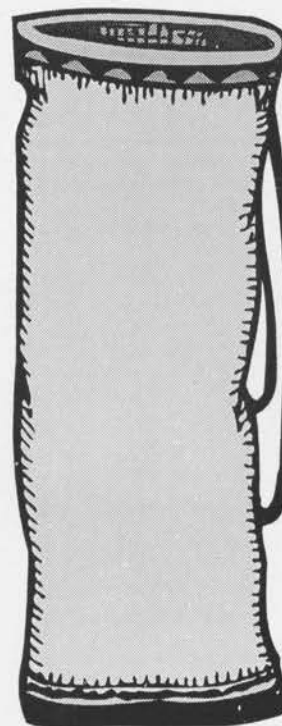
Eric DeLano

There were 4 skins out for \$58.00 each:

Scott Ford, Jerry Prieskorn Jr.,

Dave Coy and Ron Abbott

I would like to thank Paul Kolbe, the Maple Lane staff, management and owners for their continued support and hospitality. Also, kudos to Dr. Kevin Frank for whipping my butt and making me look like a hack. Last but not least, thanks to all the people attending. We hope to see the rest of you soon. Do not forget to attend the Annual Business Meeting on October 14th, 2002 at Indianwood C. C. with our host and my education co-chair, Brian Schwehofer. Officers of the GDGCSA will be elected and we need your support.



HOLIDAY PARTY 2002

This year's holiday event will be held at Greektown Casino on Friday December 6th. Some details still have to be worked out, but the program should be as follows:

- ★ Gourmet meal in newly renovated Olive Room in Greektown Casino.
- ★ Short welcome and program (comedian entertainment if possible).
- ★ Break away to enjoy some casino hospitality (gaming or live entertainment in the lounge).
- ★ Social Night Cap back at the Olive Room with prizes and dessert. Be sure to mark your calendars now for this event and watch the mail for more information.

Simplot
A Patch of Green



Timing is Everything



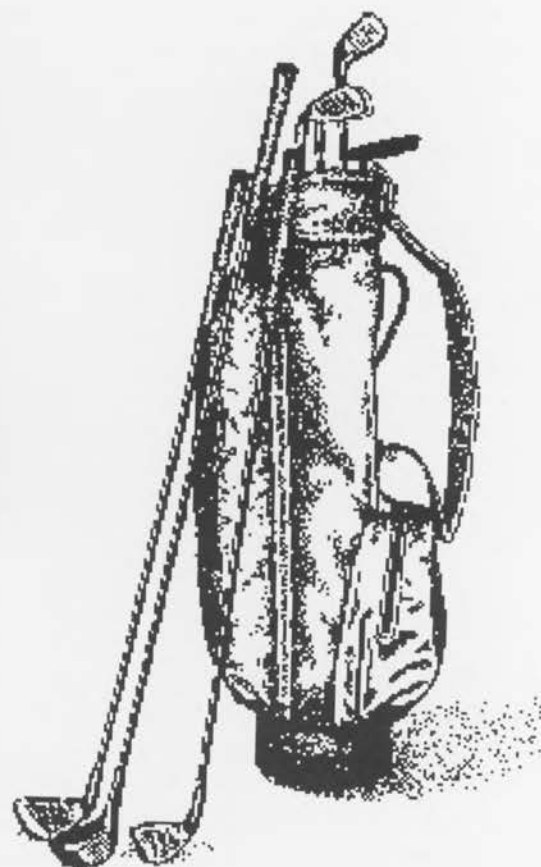
Introducing New PolarKote™ Fungicide

- Puts the Freeze on Gray and Pink Snow Mold
- Easy to Use
- Delivered When You Need It

Contact Simplot Partners:

Mark Frever	(517) 202-6660
Don Shemon	(248) 640-4439
Sue Shockey	(248) 866-6081
Scott Tibovich	(810) 577-2507

© 2002 J.R. Simplot Company. All rights reserved.



OSBURN Industries



**CUSTOM TOP DRESSING BLENDS
CUSTOM CONSTRUCTION BLENDS**

Bunker Sand ---- Best 530 • Best 535 • Best Signature

Cart Path Stone & Slag • Pea Pebble • Parking Lot Stone

Call for Details (313) 292-4140 (Ask for Tim)

Riding Out The Storm

by Chad E. Palicke

Golf Course Superintendent, Gowanie Golf Club

As a golf course superintendent, one is often expected to have the solution to a broad range of problems a golf course may encounter; with this, you are expected to anticipate the unexpected. But as with life, there are certain events that render unwanted results even with the best-made decisions and planning. This article involves a general outline of the lessons learned as a golf course superintendent when dealing with a golf club that went bankrupt.

To give you a simple overview, early this past winter our golf club was moments away from locking the clubhouse doors forever. There had been a number of financial misdealings that lead the club to fall behind in invoice and lease payments. For months, financial specialists and golf club managers worked together to find a plausible result to the setback. The only options were considerable budget cuts and a need for a special assessment from the membership. But by then the membership's trust had already been tattered and this led to a mass exodus. This was the straw that finally broke the camel's back and the club prepared to close its doors after 92 years of existence. But just hours away from finality, the club made a last ditch effort by claiming bankruptcy until further options were investigated. This move ultimately saved the club, which is now completely reorganized and out of bankruptcy.

With this event being resolved, I look at this whole incident as a learning experience. You may encounter a broad range of emotions, question your career choice, and realize how you've taken your livelihood for granted. But as the superintendent, there are dealings you should identify and certain actions you can take to protect your position:

Be Involved - You as the golf course superintendent are the single most important factor in making a golf club successful. When the club is in financial turmoil, do not only offer budget cuts, but present feasible long-term solutions. This may involve identifying problems in other departments or even producing revenue-generating strategies. With this, make sure your presence is felt by staying involved in financial decisions and by showing you are an asset to the club.

Notice Red Flags & Question Them - This can involve being suspicious of the out-of-the-norm actions of other

managers. For instance, if you notice a new financial manager purchasing furniture and computers for their office while you're receiving "past due" notices from your vendors, it's time to question things. Remember, you as a manager have every right to be suspect of others when their actions affect your ability to perform. If you are not receiving viable answers, bring these suspicions to light before your greens' chairperson or board of directors.

Be Honest With Your Employees - As a superintendent, you have a certain degree of responsibility to keep your employees informed of events that may affect their livelihoods. Hiding information from them only creates mistrust and animosity. You don't want them to learn of a possible layoff or club closure through the rumors that will begin to run rampant. Employees also have the right to prepare themselves financially and to review possible career options.

Stop The Rumors - One of the greatest battles you will incur is the continuous manufacturing of rumors and misinformation. The membership and staff will get so caught up in the exchange of hearsay that progress will cease to exist. Be a leader and cut all rumors off at the head by discrediting or ignoring them. Remember, as long as the club is still paying you and your employees, there is a job to perform.

Be Prepared - The first thing with being prepared is accepting that the worst can happen and thus you need to be ready for it. Too many of us believe that "it won't happen to me" and therefore are usually unprepared. This simply doesn't involve networking and having your resume ready; it involves having adequate funding to support you and your family during times of hardship. With losing a job, there is often a severance package obtained, but when a club goes under there is no funding available for this. Being ready should also include having a "plan of action" that you can create with your family or loved-one. This may entail having a loved-one complete an ongoing college degree or simply not overextending yourselves with a house or car payment.

Look Out For Numero Uno - Each of us has a sixth-sense that facilitates in every decision... trust in your own judgment. If there's an open position you're interested in, go for it. Turn a deaf ear to blind-promises and do what you feel is best for you and your family. I can personally

tell you, when the clubhouse doors are finally closed, those who made promises will not be there to offer you assistance.

Making The Effort - If you're fortunate, as I was, and your club attempts to rebound from bankruptcy, do everything within your power to be present and assist whenever possible. This may include working on budgets and attending meetings even though you're unemployed. When someone states that it can't be done, look at it as a challenge. This year, we cut our department's budget by over 41% and all I've heard is that the course has never looked better. It may require a lot of extra hard work utilizing fewer resources, but on a temporary basis this can be accomplished. All of this can become frustrating but it should be looked at as a personal initiative to prove to others, and more importantly, to yourself that anything is possible if you try.

As a golf course superintendent, you have to constantly adjust and adapt to a varying array of issues throughout your career. A club will rely on your sound professional judgment, and this does not differ in times of financial turmoil. You often will be the deciding factor in the viability and success of your club. By maintaining a presence and positive attitude at your club, you will not only be looked at as an asset but as a true professional. Bankruptcy and job loss is never an easy pill to swallow, but it can happen to anyone. But if you are prepared and maintain yourself as a professional asset, you can ride out almost any storm.



**A Team of Professionals Serving
Your Turfgrass Needs.**

***Turf Seed • Fertilizers • Repair Parts
Golf Course Accessories • Equipment***

LESCO

800 - 321 - 5325

LESCO is a registered trademark and Grow With Us is a trademark of LESCO Technologies, LLC



**A NUCOR BUILDING SYSTEMS
DEALER**

ASSOCIATED CONSTRUCTION SERVICES, CORP.

DESIGN/BUILD - CONSTRUCTION MANAGEMENT

OUR SERVICES INCLUDE:

Feasibility Study Municipal Plan Approval
Cost Estimating Architectural Plans
Civil Engineering Construction Service

**FROM MAINTENANCE FACILITIES WITH CONTAINMENT
AREAS, BRIDGES, IRRIGATION SYSTEMS AND
CLUBHOUSE ADDITIONS TO NEW FACILITIES
WE HAVE THE ABILITY TO MEET ALL OF YOUR
CONSTRUCTION NEEDS**

**WE UNDERSTAND BUDGETS AND SCHEDULES AS WELL AS
WORKING AROUND AN ACTIVE BUSINESS**

**5271 S. OLD US 23
BRIGHTON, MICHIGAN 48114-7523
PH: 810-229-8972 FAX: 810-229-9367
WEB SITE: WWW.ACSBUILD.COM**

Call Steve Zelle for more information

Editor's Note: *West Nile Virus* has been in the news almost daily this season. Even though it is the end of the mosquito season, we as superintendents should be paying close attention to this problem, as it appears to be getting worse, not better. The following article appeared in **Audubon International Stewardship News**, March-April 2000.

Watching out for West Nile

Will the West Nile Virus return with the birds?

By Jean Mackay, Director of Educational Services

In the fall of 1999, a disease never before seen in the U.S. struck both humans and birds in the New York City area. Known as the West Nile virus, it killed seven people and sickened fifty-nine others before the weather turned cold and the mosquito-borne disease was laid to rest. Parts of Nassau and Westchester counties and metropolitan New York City were broadcast sprayed with Malathion, Anvil, and pyrethroid pesticides to kill mosquitoes and prevent further transmission of the disease.

Several thousand birds also died. Crows appeared to be more sensitive to the disease than other birds—although this may be attributable to the fact that dead crows are simply easier to spot. A diversity of species, including blue jay, black-crowned night heron, mallard, American robin, several species of hawks and gulls, and belted kingfisher all tested positive for the West Nile virus.

The Mosquito-People-Bird Connection

The West Nile Virus is an *arboviral infection*, which means that it originates within insect populations—generally blood-sucking insects like mosquitoes or ticks—and undergoes changes in the insect prior to transmission. Fortunately, not all species of mosquitoes carry the disease—West Nile is primarily transmitted by the *Culex* mosquito. Unfortunately, while only a small number of *Culex* mosquitoes may carry the disease, they are generally prone to biting birds and people.

Birds can't transmit the disease directly to people, but once they become infected, the virus can be transmitted back to mosquitoes for about four to five days. During that time, birds can fly hundreds of miles, carrying the disease with them. Should they be bitten again by a mosquito, that mosquito becomes a new carrier of the disease.

Though some experts believe that the disease outbreak ended with the first frost last November, others say there is a possibility that the West Nile virus will spring up again, having been harbored in dormant mosquitoes through the winter. Thus, should the disease re-appear this spring, bird migration and disease distribution will need to be closely monitored.

The Threat of West Nile Virus vs. The Threat of Broad-scale Pesticide Spraying

The West Nile virus generally attacks those with weakened immune systems or immune deficiency diseases. All seven victims of last year's outbreak were elderly. While the West Nile virus is rarely fatal, its encephalitis stage is extremely damaging. Swelling of the brain may cause high fevers, headaches, uncontrollable violent seizures, and sometimes death.

Broad-scale spraying of Malathion and other chemicals to control the spread of disease carries its own set of risks. Malathion's label warns against spraying near water sources or where runoff is likely to occur—a difficult if not impossible task when aerially spraying the chemical. Ironically, the pesticide has also been found to weaken the immune system (*Journal of Immunology*, 140(2)), thereby making those exposed to it more vulnerable to disease. Should the disease re-appear, authorities will monitor its outbreak and severity and weigh controversial spraying with threats posed by the disease. If state health and environmental departments implement preventative measures outlined by the National Center for Disease Control, conducting wide-spread pesticide spraying may not be necessary.

Attracting Birds Safely

While the West Nile virus may or may not re-appear this year, there are simple precautions people can take to reduce of mosquito bites and still enjoy attracting birds to their properties. These guidelines are especially relevant for residents of New York, New Jersey, and Connecticut, where West Nile appeared last fall.

- Most important, remove stagnant backyard pools or birdbaths, old tires, or rainwater barrels that invite breeding mosquitoes.
- Wear protective clothing outdoors and use insect repellents to reduce the risk of mosquito bites.
- Finally, should you find dead birds on your property with no visible sign of injury, contact your local wildlife pathology department or health department to find out whether the bird should be tested for West Nile virus.



Great Lakes Bentgrass, Inc.

Finest Quality Sand Grown Sod

<i>A-4</i>	<i>L-93</i>
<i>Penn Trio</i>	<i>Penncross</i>
<i>Providence</i>	<i>Princeville</i>

Phone: (734) 677-3618



Macro-Injections

Oak Wilt
Three Years Protection For:
Dutch Elm Disease
Sycamore Anthracnose

Tree Care

Lightning Protection
Cabling & Bracing
Tree & Shrub
Pruning / Removal
Stump Grinding

Custom Plant Health Care Programs

Targeted Insect & Disease
Management
Soil Testing
Tree & Shrub Fertilization
Root Crown Inspection/
Girdling Root Removal
Vertical Mulching

Consulting

Tree Value Computation
Expert Witness Testimony
Diagnosis & Consultation

248-588-0202

263 Park St. Troy, MI 48083

E-Mail: generalinfo@mikestree.com Website: www.mikestree.com
Licensed & Insured



Turf Chemicals Inc.

1011 E. Main
P.O. Box 4451
Owosso, Michigan 48867
Phone: (989) 725-7145
E-Mail: turfchem@earthlink.net

**FOR ALL OF YOUR FERTILIZER,
CHEMICAL AND GRASS SEED NEEDS**

EXPERIENCED, DEPENDABLE
PEOPLE TO SERVE YOU

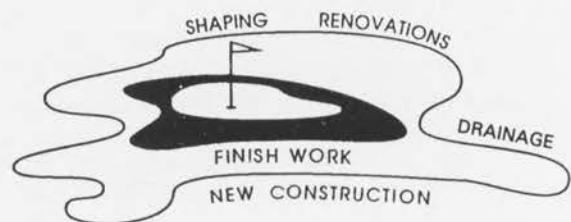
- Russ Hancock
- Jay Siddock
- Fred Miller
- Ted Kasel



TERRY MALBURG LANDSCAPING, INC.

Customizing

TEES ★ GREENS ★ FAIRWAYS ★ BUNKERS ★



CALL FOR DETAILS

810-752-3489
810-752-1026 FAX
810-337-3331 MOBILE

TERRY MALBURG
PRESIDENT



GCSAA

EDUCATION

Brought to you by the
**Greater Detroit
GCSA**

ANNUAL BLUEGRASS MANAGEMENT

Tuesday, November 5, 2002
8:00 am - 5:00 pm
DoubleTree Hotel Novi
Novi, MI

Annual bluegrass is a highly invasive species that has colonized golf courses throughout the world. Effective maintenance or reduction programs rely on a thorough understanding of the biology and ecology and thoughtful integration into management programs. This seminar is designed to present the latest thinking on developing successful maintenance and control programs for putting greens and fairway turf.

Instructor

Frank Rossi, Ph.D. - Dr. Rossi is the New York State Extension Turfgrass Specialist and Assistant Professor of Turfgrass Science at Cornell University. Dr. Rossi advises undergraduates and graduate students interested in turfgrass ecology and conducts research in the areas of turfgrass selection and establishment, weed ecology, low-temperature injury of turfgrass, putting green management, managing turf under reduced light conditions, the use of plant growth regulators as tools for mowing management and enhancing stress tolerance, and the fate of chemicals and nutrients during turf establishment. He has published information in the New York Times, Organic Gardening, This Old House and all major turfgrass industry publications.

Textbook

No recommended or required textbook for this seminar.

Continuing Education Units: 0.7
Member Fee: \$130 Non-member Fee: \$195
Code: 301-1-03RS
Lunch is provided.

What do other superintendents say about this seminar and instructor?

*A clear understanding of an old nemesis - annual bluegrass.
Dr. Rossi is enthusiastic and lively in his presentation and very knowledgeable.
Frank Rossi is one of the best speakers in the business. Great experience.*

In partnership with

**JACOBSEN
CUSHMAN
RYAN**
TEXTRON 30th Turf & Specialty Products

Register through GCSAA by Phone, Fax or Mail
GCSAA Service Center: (800) 472-7878

CN

301-2-03RS

CHAPTER SEMINAR Registration Form



1. Who Will Be Attending:

GCSAA Member? No Yes Student Member (Fee is 50% of seminar mbr. fee) Member # _____

Name: _____
First / Middle / Last

Current Job Title or Position: _____

Business/Course Name: _____

Address: _____ Bus./Course Home

City, State, ZIP: _____ Province: _____

Daytime Phone: (____) _____ - _____ Country: _____

Fax Number: (____) _____ - _____ Email: _____

If you are a non-GCSAA member attending this seminar with a GCSAA member from your facility, please provide the GCSAA member's name and number to qualify for the member rate.

Name: _____
First / Middle / Last

Member #: _____ Daytime Phone: (____) _____ - _____

2. Seminar Registration:

You may register below for multiple seminars.

Seminar Code: _____ - _____ - 03RS Seminar Date: _____ - _____ - _____

Seminar Name: _____

Seminar Code: _____ - _____ - 03RS Seminar Date: _____ - _____ - _____

Seminar Name: _____

Seminar Code: _____ - _____ - 03RS Seminar Date: _____ - _____ - _____

Seminar Name: _____

NOTE:

Please remember that you are responsible for ordering required and recommended textbooks and for bringing required textbooks to the seminars.

To prevent delay, mail separate checks for both the seminar and the textbook, as these requests are fulfilled at different locations. When purchasing textbooks by check, include appropriate shipping and handling charges.

Registrations must be received at least seven working days prior to the seminar to guarantee that the registrant is listed on the roster, receives a confirmation letter, seminar manual and lunch. (A GCSAA lunch is provided at most seminar locations; refer to your confirmation letter.)

Cancellations received 24 hours prior to the seminar date will be charged an administrative fee of \$25.00. Refunds will not be issued for nonattendance. Substitutions are permitted.

If a seminar is cancelled due to low attendance, you will be contacted approximately one week in advance of the scheduled seminar date.

GCSAA reserves the right to cancel a seminar due to inclement weather or natural disaster. Registrants will receive a full refund of the seminar fee only. GCSAA will not be held responsible for any incidental charges incurred by the registrant due to seminar cancellations for the conditions listed above.

Appropriate dress is casual business attire (slacks and collared shirts for men, similar attire for women); jackets are recommended.

3. Method of Payment:

(U.S. Funds drawn on U.S. Bank Only) • Please enclose completed form and payment.

Please check one of the following:

1. Charge to Credit Card: VISA MASTER CARD AMERICAN EXPRESS
FOR FASTEST SERVICE!

Card No. _____

Exp. Date _____

Card Holder's Name _____ Please Print

Signature _____

2. ACH Payment Name on Bank Account _____

Bank Name _____ Account No. _____

Bank Routing No. _____ (standard banks have 9 digits)

TOTAL REMITTANCE:

3. Check or Money Order Enclosed
(Make check payable to GCSAA)

4. Gift Certificate Enclosed

FOR FASTEST SERVICE!



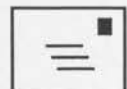
Phone:

(800) 472-7878
7:30 a.m. - 5:00 p.m.
CST (Credit Card or Check by Phone)



Fax:

(785) 832-3643
Open 24 hours!
(Credit Card or ACH Payment)



Mail:

GCSAA
P.O. Box 419004
Kansas City, MO
64141-6004



Order Textbooks Online:

Go to
<http://golfsupermarket.net>
to order your textbooks today!

CN

RS

AMERICAN SOCIETY OF GOLF COURSE ARCHITECTS

July 26, 2002

MEMO

To: Our Friends In Allied Golf Associations

From: Paul Fullmer, Executive Secretary

Subject: ASGCA Position Paper on Technology

Technology's impact on the game is one of the most critical issues today for the golf industry.

Following our recent annual meeting, the Board of Governors of the Society decided to prepare a Position Paper on Technology that would outline our thinking on the current impact, as well as what might be coming in the future.

The views of the American Society of Golf Course Architecture are outlined in the enclosed Position Paper and we urge you to review it closely because technology impacts everyone in golf. Longer courses translate into more expensive golf courses, higher maintenance budgets and additional costs for the players.

None of these are attractive options for the game and can lead to fewer opportunities for owners, superintendents, pros, managers, administrators and all those who depend on a thriving golf industry for a living.

The ASGCA Position Paper on Technology strongly supports the USGA and R&A in their efforts to maintain the spirit of the game of golf. We hope you will disseminate this paper to your membership, and we look forward to your comments on the paper.

ASGCA POSITION ON GOLF EQUIPMENT TECHNOLOGY

One mission of the American Society of Golf Course Architects (ASGCA) is to protect the integrity, traditions and mysteries of the game of golf. This includes guarding against innovation, technology or rule changes which would significantly and negatively impact the challenges of the game, or the safety of golfers, golf course staff or adjacent land users. Therefore, recent advances in golf club and ball technology that purport to increase the distance that a ball can be hit, without any improvement in swing technique, are seen as counter to these principles. As a professional society, we endorse the rules and regulations of USGA and R&A. We encourage the evolution of golf clubs and balls within those rules that permit a player of average skills to enjoy the game more. However, we are compelled to add our support to those who would

like to more tightly control innovation in golf clubs and balls that contribute strictly to the distance a golf ball can be hit.

Primary to this issue is the overall length of golf courses, placement of hazards relative to predictable play patterns and required safety buffers to either side of the preferred line of play. Taken together, longer-hitting golf equipment has increased the total acreage required for a safe golf course, with a subsequent higher cost for development and maintenance, as well as rendering the strategy of many brilliantly designed, older courses powerless to challenge the modern power hitter. We view this as a disturbing trend that threatens the spirit of the game by placing too much emphasis on long drives, instead of on a more balanced approach

ASGCA Offers One-Day Golf Course Reviews

Members of the American Society of Golf Course Architects (ASGCA) are available to spend a day reviewing a golf course and then providing a written analysis without obligation. The only cost is a donation to the ASGCA Foundation.

"We found that many people attending our Remodeling University seminars were interested in having a member visit their course and make specific recommendations on what needed to be done," ASGCA President Jay Morrish stated, "so we decided to formalize a one-day visit process that would provide the course with definite ideas for a remodeling plan. The ASGCA member will forego his/her normal fee for this service in return for a donation to our Foundation."

The offer applies to both public and private courses, and Morrish hopes that many municipally-owned courses will take advantage of the opportunity to have a qualified ASGCA member analyze their facility.

To request a visit, or learn more about the process, please contact the American Society of Golf Course Architects, 221 N. LaSalle St., Chicago, IL 60601. Or, call 312-372-7090. You can learn more about the Society, which is comprised of leading golf course architects in the U.S. and Canada, by visiting the organization's web site at www.asoca.org.

Complete Golf Course Service

734.459.8690
South Detroit

248.371.9007
North Detroit

*Specialists in pruning,
tree removals, planting
and transplanting*

248.332.6690

- Renovations – greens and bunkers
- Landscaping/horticulture services
- Tree inventory programs
- Environmental services
- Irrigation



that rewards those skilled with every club in the bag.

Admittedly, the real distance advantage of modern equipment is currently for only a select few playing at the highest levels, but even young players coming into the game are being taught "hit it hard now, and straighten it out later." The emphasis is on "far" and not "sure". This free-swinging approach has resulted in many more errant shots that often leave the probable play area and sometimes the boundaries of the golf hole or golf course. This, in turn, has led to what seems to be an increase in lawsuits related to errant golf shots. Thousands of older courses no longer play as designed, with many unable to be expanded. In recent years, there has been a widening of golf corridors or safety buffers as golf course architects attempt to keep pace with the greater distance off line that golf shots are hit with today's equipment. The net result is that golf courses take up more land. With subsequent increases in maintenance cost, while slowing down play, with no appreciable increase in enjoyment for the average golfer. These

increased costs are then passed along to the golfer, who already is unhappy about the cost of golf.

Therefore, the American Society of Golf Course Architects (ASGCA) challenges the equipment manufacturers to focus on innovations that make the ball go straighter, not longer. Such game improvement features would benefit golfers at all levels and yet preserve the lure that makes golf the greatest game in the world.

We also applaud the USGA and R&A for drawing "a line in the sand" with regard to golf clubs and balls. Only through the cooperation of everyone in the golf industry can we preserve the game of golf as we know it.



IRRIGATION INNOVATION

• • •

We offer real solutions for even the most challenging greens.
More than 80 golf courses have benefited from our expert touch.

**Installation • Renovation
Repairs • Winterization**

Pump Stations

- Installation
- Service
- Upgrades

High Tech Solutions

- Touch Screen Computerized Monitoring
- Personal Computer Desktop Programming
- Two Wire Control Systems
- Wireless Satellite Control Systems
- Fusion Welded Pipe Systems



MARC DUTTON
IRRIGATION, INC.

4720 Hatchery Road • Waterford, MI 48329-3627
(800) 228-4470 • www.marcduttonirrigation.com

NEW MEMBER SERVICE

Equipment Advertising

Dear Members,

The Board realizes that many of our Superintendent members have equipment/supplies that you would like to make available to your fellow members. Your association would like to help you by offering the following options:

- In the past, you could utilize our Classified Ad section of A Patch of Green.

Cost: \$.85 per word with a minimum of \$25

Deadline: Five times a year, when the magazine is published.
(Mar, May, July, Sept, Nov)

- We are now offering another option...Friday mailings. This new service is much like the Job Referral Service. Your information will be sent to approximately 200 Superintendent Members via email and mailings.

Format: Complete our one page form.

Cost: \$175.00 - Separate Mailing

Info received by Wed. noon will be mailed out by Fri.

\$125.00 - Regular Mailing

Info received by Wed. noon.

When Included with another mailing, Fri date not guaranteed, because we don't always have another mailing going out.

Invoicing: Club will be invoiced at time of mailing.

(Online billing available)

Payment: Due within 30 days of mailing date.

If you have any questions, or need a copy of our form, please, call Kate Mason (248) 362-1108.

BOARD MEETING HIGHLIGHTS

Board did not meet, but, provided Committee Updates.
July 2002

FINANCE (King)

June Assn svgs: \$26,193.46 June Fdtn svgs: \$4,446.73
June Assn chkg: \$882.10 June Fdtn chkg: \$58.14

MEMBERSHIP (McMullen)

Total membership - 421; Applications - 2

AWARDS (Ford/Fouty)

Heritage Awards

Announcement in Mid-Summer *POG*.

Applications available August 15.

Turfgrass Scholarships

Announcement letter to be sent to MSU in September.

CREDIT CARDS (Abbott)

We will now be accepting credit cards for the following:

Dues, Meetings, Advertising and Job Referrals

Online Credit Card Billing will be offered for Advertising and Job Referrals

GCSAA DELEGATE/Liaison

Tim Dorner will be this year's Delegate.

Meeting in Kansas to be held in November.

GOLF DAY (Ford/Fouty)

2002 - Fliers will be in Mid-Summer *POG*. First committee meeting in August.

Sites: Bay Pte. GC, Burning Tree G & CC, Edgewood CC, Tam O'Shanter CC.

2003 - Sites will be considered for next year.

MAILINGS (Abbott)

Board will now offer new service to Superintendent members.

Members who have equipment, etc. for sale may utilize the association mailing system.

Must use specialized format. Must provide info to Exec. Sec. by noon on Wednesday for Friday mailing.

Cost: \$125 (if included with other items) or \$175 (if going alone)

NOMINATIONS (Szyndlar)

Some nominees withdrew from election.

Committee is considering additional nominees.

Bios will be in Fall Issue of *POG*.

SOCIAL (Billette/McMullen)

FAMILY TIGER BASEBALL GAME -

Reservations - 112; Attendance -100.

Positive response. Successful event. Will be considered for next year.

FALL COUPLES GOLF OUTING - Date: September or October. Site: East side.

HOLIDAY PARTY - Date: Friday, Dec. 6 (tentative). Site: Greektown Casino, Olive Room

WEB SITE (Schweihofer)

Board authorized budget for set-up.

WELFARE (Shreve)

Clem Wolfrom's office fire bombed. Lost a lot of memorabilia, records, etc.

Brian Schweihofer had first-born son, Glenn, on July 15. Card sent.

BOARD MEETING HIGHLIGHTS

Bloomfield Hills Country Club
Monday, August 26, 2002

Roll Call:

Present - Abbott, Billette, Fouty, King, McKinley,
McMullen, Schweihofer, Shreve, Szyndlar
Absent - Ford

FINANCE (King)

July Assn svgs: \$22,876.00 July Fdtn svgs: \$4,385.55
July Assn chkg: \$1,085.38 July Fdtn chkg: \$50.14

MEMBERSHIP (McMullen)

Total membership - 421; Applications - 2

EDUCATION (King/Schweihofer)

Sept. 17 - Wolfrom Classic Golf Championship/Education

Site: Maple Lane GC

Speaker: Dr. Kevin Frank, MSU

Oct. 14 - Annual Meeting/Golf/Election

Site: Indianwood Golf & Country Club

Nov. 5 - GCSAA Regional Seminar

Site: Doubletree Hotel, Novi

Speaker: Dr. Frank Rossi

Topic: Annual Bluegrass Management

Credits: .7 Continuing Education Units

GOLF DAY (Ford/Fouty)

Committee making calls to vendors and superintendents
for sponsorships and donations.

MICHIGAN ROOM 2003 (Shreve/Fouty)

Plans are in the works for Atlanta, Georgia

WELFARE (Shreve)

Jon Maddern's (Elk Ridge GC and next President of
GCSAA) mother-in-law passed away.
Flowers & card sent.

Chemicals, fertilizer, seed and much more!



Rob Pylar (586) 242-8322

Dave Polen (810) 839-8930



United
Horticultural Supply.

WWW.UHSONLINE.COM

Roster Changes

Please make the following changes to your roster.

Company, E-mail, Home Phone/Fax (pg. 33)

BIRDWELL, BRIAN N.

John Deere Golf & Turf

H/Fax - (586) 226-8330

bbirdwell@johndeerelandscapes.com

Home/Office Phone (pg. 34)

CARMODY, EDMUND T.

307 W. 14th St.

Traverse City, MI 49684

H/O - (231) 929-4218

Address, Home Phone (pg. 44)

HORTON, TAVIS J.

1100 Northview Lane

Rochester Hills, MI 48307

H - (248) 650-0201

E-mail (pg. 45)

JACKSON, MARK R.

Lorraine.Voorheis@davey.com

Home & Office/Fax Phones (pg. 47)

JONES, DAVID W.

H - (989) 739-8724

O - (586) 752-6724

Fax - (586) 752-4481

E-mail (pg. 47)

KALTZ, MICHAEL

RichmondForestGolf@msn.com

E-mail (pg. 48)

KING, ROBERT

turfman11@yahoo.com

E-mail (pg. 50)

LOCKE, RICHARD D.

richlocke@msn.com

Club, Phone, Fax (pg. 50)

LOVEDAY, STEVEN E.

Pine Lake Country Club

O - (248) 681-1322

Fax - (248) 682-1426



SAND SALES COMPANY

P.O. Box 713
Clarkston, MI 48347

Industrial Sand Specialist for 3 Generations
Golf Course Sands - Aggregate - Custom Greens Mix

Brad J. Paddison

Mobile (313) 410-5201
Office (248) 673-3177

OUTDOOR
PEST CONTROL
SERVICES



MOSQUITO
CONTROL
SPECIALISTS

ADVANCED PEST MANAGEMENT

Advanced Outdoor Spraying Company

GREG SEAGO

GENERAL MANAGER

201 MAIN ST. • ROOM 533 • FENTON, MI 48430
(810) 750-1645

Cart Paths

Specializing in:

- ◆ Installation of new asphalt cart paths
- ◆ Resurface existing cart paths
- ◆ Installation of stone paths
- ◆ Grading
- ◆ Sub-grade preparation
- ◆ Sub-base preparation
- ◆ Restoration

WHETHER YOUR COURSE IS WELL ESTABLISHED
OR IN THE DEVELOPING STAGES,
LET ASPHALT CART PATHS HELP TO INCREASE YOUR REVENUE.

Free Estimates State Qualified Insured References

PRO-LINE ASPHALT

(248) 651-7271

E-mail (pg. 52)
MC MASTER, AARON S.
mick710@aol.com

Home Phone
NACHREINER, JOHN S.
H -(248) 219-8898

Office/Fax, E-mail (pg. 56)
PAWLUK, DAVID J.
O - (810) 984-0143
Fax - (810) 984-0143
djpmu1988@aol.com

Club, H/O Phone, Fax, Class (pg. 57)
PERRY, MICHAEL J.
CLASS SMN
Wolverine Golf Club
H - (586) 786-1072
O - (586) 781-3004
Fax - (586) 781-7050

Cell Phone (pg. 57)
POLEN, DAVE R.
O - (586) 839-8930

Club, Phone, Fax (pg. 59)
REMER, JAMES C.
Wolverine Golf Club
O - (586) 781-3004
Fax - (586) 781-7050

E-mail (pg. 59)
ROBINSON, TODD W.
twrobinson@aol.com

E-mail (pg. 60)
SABGASH, SCOTT J.
Sabgashs@yahoo.com

Phone (pg. 61)
SAMP, MARK
O - (313) 543-3277

Mobile (pg. 62)
SHEMON, DANIEL J.
Mobile - (248) 640-4439

Fax (pg. 63)
SKELTON, RODNEY G.
Fax - (248) 681-9962

TRI-TURF

ANNOUNCING
SALES TO SOUTHERN MICHIGAN

MARTY DOMINICK

Sales Representative

248-640-4840 Mobile
734-591-9069 Res.

PRODUCTS AVAILABLE

Chemicals:

Aquatics
Bio-Stimulates
Fungicides
Herbicides
Insecticides
Indicator Dye
Micronutrients
Surfactants
Tank Additives

Fertilizers:

HHI
Howard Johnson
Lebanon Seaboard
Luxacote
Milorganite
Nutramax Labs
Plant Food Liquid
Plant Marvel Soluble

Grass Seed:

Jacklin Seed
Lebanon Seaboard

Golf Supplies:

Accuform
Flexstake
Par Aide
Standard

Equipment:

Earthway
Gandy
Prizelawn

Parts and Accessories:

Teejet

Shop Supplies:

Gel Tec
Jesco

Soil Management:

Conweb
Evergreen
Kormat
Peat Sorb

ALL PRODUCTS WAREHOUSED IN SOUTHERN MICHIGAN
CALL MARTY DOMINICK





Turf Grass Specialists
Custom Mixes & Blends
NEXT DAY DELIVERY
TO YOUR GOLF COURSE

Let us serve you
in all your
golf course needs.

GRASS SEED - FERTILIZER - LAWN PATCH
WILDFLOWER, NATIVE & FIELD SEEDS
LANDSCAPING PRODUCTS - TOOLS
EROSION CONTROL PRODUCTS
HYDROSEEDING SUPPLIES AVAILABLE

Brighton 800-482-3130	Bradley 877-744-6657	Saginaw 800-790-1898
--------------------------	-------------------------	-------------------------

Club, Address, E-mail, Phone, H/O/Fax (pg. 66)

TYRPAK, JOEL T.

EGI @ Fieldstone Golf Club

24686 Rensselaer Blvd.

Oak Park, MI 48237

H - (734) 231-5814

O - (248) 276-9347

Fax - (248) 276-9348

tyrpakjo@pilot.msu.edu

O/Fax Phone (pg. 67)

WEAVER, LOWELL T. II

O - (269) 789-4653

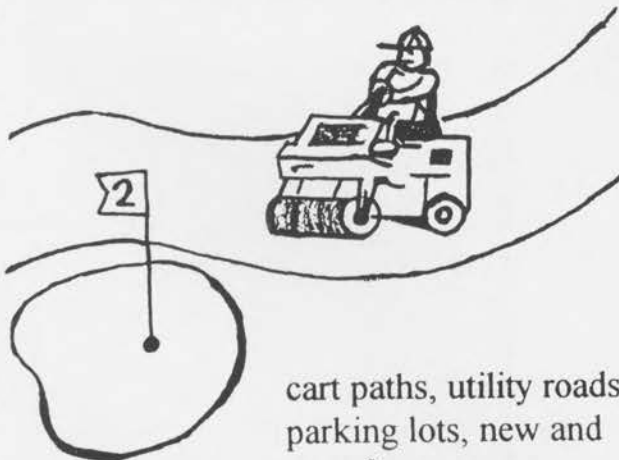
Fax - (269) 789-1469

E-mail (pg. 68)

WIEGAND, ROBERT E.

RichmondForestGolf@msn.com

S & F CONSTRUCTION INC.
golf course specialists



cart paths, utility roads
parking lots, new and
resurface.

seamless patching, curb work, lightweight
equipment and flexible working
arrangements with staff etc.

(586) 752-4889 (586) 752-2401

Fax: (586) 752-6719

DEEP ROOTS

Aerification Service

Featuring the

**Southern Green
Deep Tine
Soil Reliever**

Don Myers (248) 640-2718

Kevin Myers (248) 640-2719

Tim LeBlanc (248) 640-2717

We've Helped Someone You Know



New Member Roster

Welcome to our new member.

Add him to your roster.

PYLAR, ROBERT M.
AFFILIATE
United Horticultural Supply
68790 Oak St.
Richmond, MI 48062
H - (248) 542-5264
Cell - (586) 242-8322
Fax - (586) 727-4930
robert.pylar@uap.com



**12 Years of Golf Course
Tree Maintenance**

Organic Waste Removal
Tree & Stump Removals
Pruning • Cabling
Tree Fertilizing • Crane Services

Member
NAA & MDLA

KEVIN J. SCHILBE
President

Mobile (313) 929-0445
Office (313) 565-5552

www.schilbetreecare.com



SEVEN GOOD REASONS TO CALL TURFGRASS FOR YOUR FALL NEEDS!

- 1** Doug Johanningsmeier
248-640-3381
- 2** Dan Johanningsmeier
248-640-3380
- 3** Richard Locke
248-640-3375
- 4** Keith Richards
248-640-4530
- 5** Dar Howard
248-640-3379
- 6** Bruce Wotring
419-466-9177
- 7** Mike Rupp
419-466-0764

**Not to mention quality products,
knowledgeable service
and free timely delivery!**

TURFGRASS INC.

1-800-521-8873 1-248-437-1427

E-mail: lorac1991@yahoo.com

*New from
The Andersons...*



Andersons
GOLF PRODUCTS

*The groundwork
for excellence...*



Distributed by:
TURFGRASS, INC.



P. O. Box 667
28064 Pontiac Trail
S. Lyon, MI 48178

Call 800-521-8873
or 248-437-1427
(call collect)



Professional Turf Products Division
P. O. Box 119
Maumee, OH 43537

2002 STATEWIDE CALENDAR

GREATER DETROIT GCSA

- Oct. 7 The Big Event, sites TBD (golf/fundraiser)
- Oct. 14 Annual Meeting, @ Indianwood (golf/election)
- Nov. 12 Regional GCSAA Seminar @ Novi (education .7 CEU)
- Dec. 6 Social: Holiday Party (Spouse outing) Greektown Casino
- Dec. 10 Superintendent Only Roundtable Discussion @ TBD

MID-MICHIGAN TURF ASSOCIATION

- Oct. 7 MTF Fundraiser @ Buck's Run
- Oct. TBD Annual Meeting @ Warwick Hills CC

WESTERN MICHIGAN GCSA

- Oct. 7 Annual Meeting @ Kent CC
- Oct. 22 GCSAA Seminar @ TBD



GREATER DETROIT GOLF COURSE SUPERINTENDENTS ASSOCIATION

P.O. BOX 173 • TROY, MICHIGAN 48099 • TEL (248) 362-1108 • FAX (248) 362-1736

APPLICATION FOR MEMBERSHIP

I hereby apply for membership in the Greater Detroit Golf Course Superintendents Association, which is an Affiliate Chapter of the Golf Course Superintendents Association of America.

Name:	Spouse:	
Home Address:		
City:	State:	Zip:
Business/Club:		
Business Address:		
City:	State:	Zip:
Mailing Address: (Check One)	<input type="checkbox"/> Home	<input type="checkbox"/> Business
Home Phone:	Office Phone:	Fax:
Are you a GCSAA member?:	Are you a CGCS (Certified Supt.)?	

PRESENT POSITION

Title of Current Position:
Starting Date of Current Position:

PAST POSITIONS HELD

From/To	Title	Place of Employment	City/State

Each application must be signed (attested) by two members (SUPERINTENDENTS) of GDGCSA, who certify as to the reliability of the applicant's information as stated above.	
Attestor:	Date:
Attestor:	Date:

If accepted, I hereby certify that I will observe the constitution and by-laws of the Greater Detroit Golf Course Superintendents Association and the Code of Ethics of the Golf Course Superintendents Association of America.

Signature of Applicant:	Date:
-------------------------	-------

Do not include a check with this application.

FOR GDGCSA USE ONLY

Date Application Rec'd:	Date Approved:
Amt. Due:	Date Paid: Check No:
Class:	Membership No.:
Signature (Membership Chairman):	

A cut above.

Rely on Valley Turf for a comprehensive array of turf management products and a higher level of service and support.

Featuring Rainbird irrigation systems and Textron equipment.

Valley Turf

A cut above

Grandville
616-532-2885

Kalkaska
231-369-3482

Detroit
810-220-2040

TEXTRON

RAIN  BIRD.



THE ROYAL FAMILY.

**JACOBSEN® GREENS KING™ 500A SERIES,
GREENS KING VI, GREENS KING IV, AND PGM 22.™**

Jacobsen greens mowers are the most user-friendly, productive greens mowers available today. And with the precision of a Jake cut, you'll get the professional performance no one can beat. These mowers feature the industry's most advanced engineering, a variety of engine sizes and the finest cut available. Plus, you get the versatility and productivity of the Greens King VI, the proven reliability of the Greens King IV, the tournament-quality cut of the Greens King 500A Series, or the precision of the PGM 19" or 22. With the legendary family of Jacobsen mowers, your greens will get the royal treatment. For more information, come in or call today.



www.kentron.com
©2001 Textron Golf, Turf & Specialty Products.
All rights reserved.



25125 Trans-x Road
P.O. Box 605
Novi, Michigan 48376

248-349-4100 Phone
248-349-0406 Fax
www.wfmiller.com

JACOBSEN
TEXTRON

Precision Cut. Legendary Performance.

A PATCH OF GREEN

P.O. Box 173
Troy, MI 48099
USA

17 7 *****5-DIGIT 48824
PETE COOKINGHAM
MSU MAIN LIBRARY/W212
EAST LANSING MI 48824



PRESORTED
STANDARD
U.S. POSTAGE
PAID
PONTIAC MAILING
SERVICE

The Official Publication of the
Greater Detroit Golf Course
Superintendents Association