

Tee to Green

December 1977

Published monthly by the Metropolitan Golf Course Superintendents Association

Vol. VII, No. 10

MEETING NOTICE:

Date: Thursday, January 12, 1978

Place: Rye Golf Club

Lunch: 12 noon followed by General Business Meeting
MGCSA

Program: To be announced

Directions: Rye Golf Club is located on Route 1, Boston Post Road about ½ mile from Town of Harrison. If you come off of I287 take Route 1, South through the business district of Rye. It's about 2 miles South of the Town on your left.

COMING EVENTS:

- January 8-12 Maryland Turfgrass Conference, Lanham Inn, Lanham, Md.
- January 9-12 The Garden Living Industries of Eastern United States, Nurserymen's Trade Exposition, Concord Hotel, Kiamesha Lake, N.Y.
- January 16-19 Penn State University Turf Conference, University Park, Pa.
- January 27 USGA Green Section Turfgrass Conference, Mark Hopkins Hotel, San Francisco, Calif.
- February 12-17 49th International Turfgrass Conference and Show, San Antonio, Texas.
- March 1-3 University of Mass Turf Conference and Show.

MGCSA News:

I guess the question on everybody's mind is where's the sunshine, the Indian summer of fall? It ended up as a record month for rain, 12" plus in November. It certainly is a challenge trying to get fall construction projects done. It is very difficult to work with mud. Yes, it's been a busy fall with our Annual Meeting and Elections. Then came the MGA Presidents council meeting in which the Golf Course Maintenance Survey was reviewed. Ted Horton was on this panel. Let's hope more clubs can contribute to this survey next year. The more input the more meaningful the survey will be for everybody. Then we went right into the New York State Turfgrass Conference at Albany New York. We didn't have a very good representation from the Metropolitan area. Things are on the upswing so don't miss it next year. John Sundhelm stepped down as President and Mel Lucas Jr. is the new President of NYSTA. Dr. Richard Smiley did one great job in pulling the green industry together. Leaders from the New York State Turfgrass Industry were brought together on two occasions in 1977. The

recent completion of the turf survey (which is written up in detail in this issue) will go a long way to getting things moving in many directions, all on the positive side. The NYSTA had an excellent program. Pat Vittum, who is doing our research on the hyperodes weevil, had some fantastic slides taken with a Scanning Electronic Microscope. We also heard from the Department of Environmental Conservation on the Mercury situation. It is possible that we may have a hearing on the use of mercury for snow mold control. Connecticut just got their approval to use Mercury again. That means we are about the only state in the USA that can't use it.

Sherwood Moore finally got surprised. He was honored by former students who are now Superintendents in the profession.

New Jersey Expo was another great conference. They had over 900 registered. We saw both Bob DePencier and Vic Cedrone who are doing just fine. Ted Horton gave a talk to the landscape group on how to estimate a job. Yours truly was a session chairman on fairway grasses and their maintenance. Jack Ormond was posthumously honored to the New Jersey Turfgrass hall of fame. Nobody deserved it more than he did. Mike Meffei will never miss a drawing again. His name was called for the door prize, a colored TV set, only Mike wasn't there so they just pulled another name. Al Caravella also won a calculator.



New York State Turfgrass Association Bulletin Board being donated by MGCSA to NYSTA. Left to right, NYSTA President John Sundholm, MGCSA President Ted Horton and Dr. Richard Smiley of Cornell University.



Editorial Staff

Garry Crothers
Ted Horton

Co-Editor
Co-Editor

OFFICERS

President: Edward C. Horton, Winged Foot Golf Club
Office 914-698-2827, Home 914-937-3613

Vice President: Robert Alonzi, Burning Tree C.C.
Office 203-869-5779, Home 914-937-1527

Secretary: Michael Maffei, Back of Beyond Golf Course
Office 914-279-7179, Home 914-279-7895

Treasurer: John Traynor, Westchester Country Club
Office 914-967-6000, Home 203-334-7359

Not copyrighted. If there is good here, we want to share it with all chapters – unless author states otherwise.

If you are looking for turf conferences to attend. You can probably go to one each week from January to March. Each conference is getting bigger and you just wonder when regional conferences will be developed. At any rate have a happy holiday, best wishes for a good turf year in 1978. See you all in San Antonio at the GCSAA International Turfgrass Conference.

Garry N. Crothers



Sherwood and Marie Moore at dinner honoring Sherwood.

Sherwood Moore Honored

Sherwood Moore, who has been active in the MGCSA for many years in just about every capacity, was honored and given a surprise dinner by former students who are now golf course superintendents or in related turf grass professions. Also in attendance were some of his close friends. It was held at the Hillandale C.C. where Larry Sheridan (A former student is

manager). Nothing is greater than pulling a complete surprise on somebody and it couldn't have happened to a more deserving person. Sherwood has trained over 25 men in our profession. We had an excellent roasting party with Jim Fulwider pulling off a complete deadpan roast of Sherwood with not one smile or positive statement. Ralph Engel had some old slides, John Wistrand acted as MC. There were telegrams from all over the country. Did you know that Bob Williams, Mel Lucas Sr., and Geoffrey Cornish were all in the same class at the University of Mass. Stockbridge school? Mr. Albert Brown, Club President and Green Chairman at Woodway presented Sherwood with a blazer from the club bearing the Woodway insignia. The club is very proud of what Sherwood has done for them. Sherwood continues to bustle with energy and enthusiasm. I guess he wrapped it all up by saying "If you have a genuine love and enthusiasm for your work you're bound to be successful."

MGCSA Annual Meeting

The MGCSA had their annual meeting at Rye Golf Club on November 11 hosted by Dick Gonyea.

All Committees gave their annual reports prior to elections. Ted Horton's Presidents Annual Report is in this issue.

We also were grateful for the \$500. donation from the Conn GCSA presented by Bob Phipps for the Hyperodes Research Project.

The following officers were elected for 1978

President—Ted Horton
Vice President—Robert Alonzi
Treasurer—John Traynor
Secretary—Mike Maffei

Directors elected—

2 year term

Mark Millett
Frank Bevelacqua
Sherwood Moore

Directors elected—

1 year term

John Hunt
John Muste



MGCSA New Officers and Directors: Frank Bevelacqua, Treasurer John Traynor, Secretary Mike Maffei, John Hunt, Mark Millett, Paul Caswell, Vice-President Robert Alonzi, Garry Crothers, President Ted Horton, Sherwood Moore and John Musto.

President Ted Horton has made the following Committee assignments for 1978 which have been approved by the board.

If any member desires to serve on any particular committee please contact the chairman of that committee he will be more than willing to have you help him and participate.

Membership: Mike Maffei and Paul Caswell

Program: Robert Alonzi, Paul Caswell

Golf and Invitational: Frank Bevelacqua and Mark Millett

50-50 Raffle: John Hunt and Frank Bevelacqua

Public Relations & Rosters: Mark Millett and John Musto

Tee to Green: Garry Crothers, John Musto, Ted Horton

Christmas Party & Picnic: Paul Caswell and Sherwood Moore

Country Garden Show: Mark Millett

Welfare: Ted Horton and Pat Lucas

Scholarship and Research: Garry Crothers, Sherwood Moore, John Traynor, Ted Horton

By-laws and Insurance: John Taynor, John Hunt, John Musto

Advisory: Ray Twombly

Nominating: To be announced

GCSAA Delegate: Mike Maffei and John Traynor

MGCSA Research Fund and Report;

Please note that just recently you and your club officials may have received a letter from the Research and Scholarship Committee in regard to your 2nd payment of \$200.00. Please disregard this if you have already made your payment. This was an error in mailing. The letter should have gone to all clubs who contributed in 1976 but not 1977.

All clubs who have contributed to date will receive an updated report on the research done by Pat Vittum in 1977 along with a technical report from Dr. Tashiro for the Superintendents. The two photos on the hyperodes weevil show what kind of resources we have to work with in studying the weevil. It may really be the breakthrough on 2nd generation vs. a possible other species. We are fortunate to have someone as dedicated as Pat Vittum working on this insect problem.

SURF SIDE


wetting
agent

For flowability buy **SURF-SIDE**. **SURF-SIDE** maintains the correct blend at 80% active ingredient, flows at 35° F, has improved solubility, better foam control, and is the **only** product on the market directly related to the bulk of the published research work over the past 20 years.

ZAP! DEFOAMER

GRANULAR SURF-SIDE

MONTCO PRODUCTS CORPORATION P.O. BOX 404



AMLER PA 19002



TURF MAINTENANCE EQUIPMENT AND SUPPLIES

THE MAGOVERN COMPANY, INC.

EST. 1896 - INC. 1928

P. O. BOX 270, LAWNACRE ROAD, WINDSOR LOCKS, CONNECTICUT 06096
WINDSOR LOCKS 203-623-2508 • SPRINGFIELD 413-781-0261

On behalf of all the employees of the Magovern Company, we wish all the Clubs and their staffs a very Merry Christmas and a Happy and Prosperous New Year.

Again, as in the past, we are donating monies to the Metropolitan Golf Course Superintendents Association Research and Scholarship Fund.

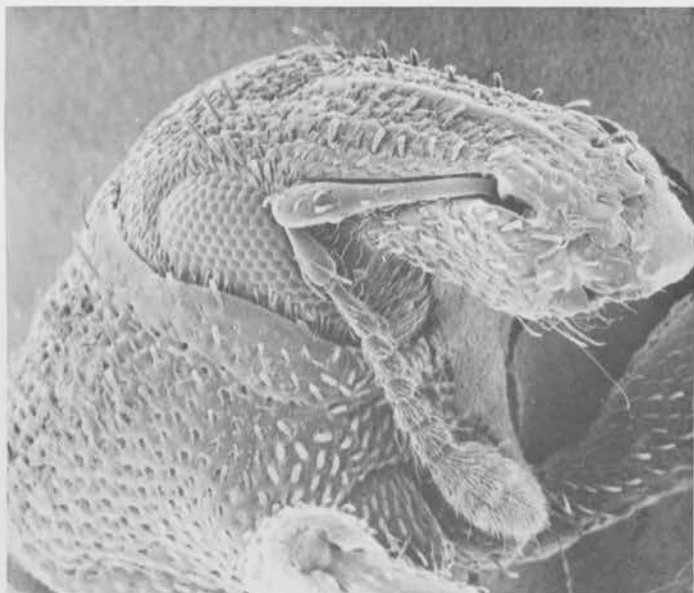
The Magovern Company, Inc.

HYPERODES UPDATE

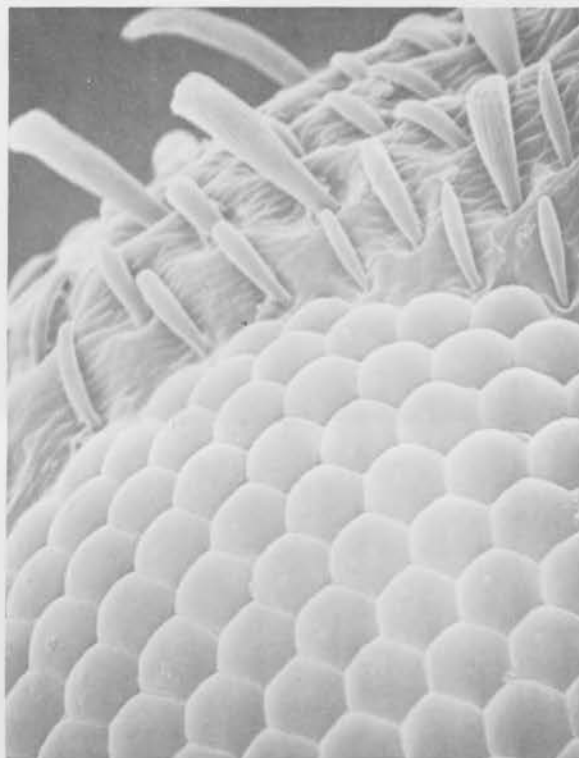
I have been examining weevils at very high magnifications using a scanning electron microscope. Below are two samples of the photographs we can get with the microscope. The first picture shows the head and thorax ("shoulder") region of a weevil—note the snout, antenna, and eye. We plan to use pictures like this to compare the numbers of hairs and scales on the thorax, to determine if there are two different species involved. (Magnification 50X).

The second picture is a close-up of the eye of the weevil, magnified 400X. This gives you an idea of the versatility of the microscope—and the detail on the weevil!

Pat Vittum



Our dear friend, the hyperodes weevil... his head, eye and antenna taken with a Scanning Electric Microscope.



Detailed photo of the eye of the hyperodes weevil.

photos by Pat Vittum



TRUE TEMPER TOOLS
TURF MAINTENANCE SUPPLIES
HOMELITE CONST. EQUIPMENT

EMANUEL SHEMIN — HORTICULTURIST

1081 KING STREET, BOX 64, GLENVILLE STATION
GREENWICH, CONNECTICUT 06830

(203) 531-7352

(914) 937-4644

GREENHOUSE • NURSERIES

One Stop Wholesale Center

Distributors of

- EVERGREENS
- FLOWERING TREES
- SHADE TREES
- GROUND COVERS
- FENCING
- FIR & PINE BARK
- HOLLYTONE
- SPRAYING EQUIPMENT
- A-D-S-DRAINAGE SYSTEMS
- TREE STAKES
- RAILROAD TIES
- MULCHES
- CONTAINER MATERIAL
- TURF CHEMICALS
- GRAVELS
- GRASS SEED
- ARBORIST SUPPLIES

Weather*matic.

Lawn Sprinkler Systems
Safe-T-Lawn
Lawn Sprinkler Systems

FRAM
FILTERS

MARVEL
PRODUCTS



T R C
PRODUCTS

LUBRICATING
EQUIPMENT

THE REICHERT COMPANY

PHONE (203) 661-1816
RES (203) 637-2958

MAIL P.O. BOX 273
RIVERSIDE, CT. 06878

8 FLINT ROAD
AMITYVILLE, N.Y. 11701



(516) 842-0521

APPLICATION FOR MEMBERSHIP

I hereby apply for membership in the New York State Turfgrass Association as a(n)
_____ Member. Enclosed is \$_____ dues or contribution for 1978.*
(choose from below)

Please mail all Association publications and correspondence to me at the following address:

_____ PRINT Full Name			_____ Telephone	
_____ Street or P. O. Box		_____ City	_____ State	_____ Zip

The organization that has designated me representative and/or with which I am associated is:

_____ Organization	_____ Street or P.O. Box	_____ City	_____ State	_____ Zip
of which I am: _____			_____ Official Title	

Signed: _____

*Return this portion with remittance to address above. Make check payable to New York State Turfgrass Association.

Retain This Portion for Your Information

INDIVIDUAL Membership shall consist of all persons who desire membership but are not associated with an organization sympathetic with the objectives of the Association. Individuals shall be granted all privileges including voting and holding elective office. Annual dues for the Individual Member are \$20.00.

ORGANIZATION Membership shall consist of all clubs, firms or organizations which are in sympathy with the objectives of the Association. The organization shall designate not more than two representatives who shall have the same privileges as the Individual Member. Annual dues for the Organizational Member are \$50.00.

SUSTAINING Membership shall consist of any individual or organization wishing to demonstrate dedication, commitment, and support of the objectives of the Association above and beyond the requirements for membership. Sustaining members shall have the same privileges as the Individual or Organizational Member. Sustaining members are invited to give a minimum annual donation of \$100.00.

STUDENT Membership shall be extended to those persons who are enrolled full time in a Turfgrass or related curriculum at an institution of higher education in New York State. Students shall have all privileges of the Individual Member but shall not pay dues, vote or hold elective office. (See other side for certification.)



Mr. Albert Brown, President of Woodway C.C. presenting Sherwood Moore with a club jacket.



President Ted Horton accepting a check for \$500 from Bob Phipps, Connecticut GCSA, for Hyperodes Research Fund.



Jim Fulwider, the biggest roaster in the East, giving the one-two to Sherwood Moore.

Mr. Edward C. Horton, President
Metropolitan Golf Course Superintendents' Assoc.
Winged Foot Golf Course
Fenimore Road
Mamaroneck, New York 10543

Dear Ted:

I want to thank you and the MGCSA for designing and constructing the sign for the New York State Turfgrass Association. The sign is very attractive and expresses the goals of NYSTA. It will certainly be used at various conferences and field days throughout the State. This is another significant contribution to the support which will be needed by Cornell University's growing research and extension team.

We appreciate your cooperation and support.

Sincerely,
Richard W. Smiley
Assistant Professor and
Turfgrass Pathologist

Dear Ted:

I would like to take this opportunity for you to print in the next Tee-To-Green, my invitation to all members of the Metropolitan to visit Pinehurst and on their way south during the next few months to either play golf or use our other facilities or just rest.

Regards,
Robert DePencier
Golf Manager

Caddy Master Wanted:

Please contact Burning Tree C.C., Robert Alonzi, (203) 869-9004.

WANTED TO PURCHASE

1 Used Royer Shredder

Please contact: Mike Russo at Lake Over Country Club

Phone: (914) 666-2921

1977 NEW YORK STATE TURFGRASS SURVEY

By Ted Horton, CGCS

Perhaps the single most important item presented at the New York Turfgrass—Cornell Conference in Albany was a summary of the New York State Turfgrass Survey information. The presentation climaxed a great deal of time and effort expended by Ms. Joann Gruttadaurio, Extension Support Aide, Department of Floriculture and Ornamental Horticulture, Dr. Ernest Hardy, Senior Research Associate, Resource Information Laboratory, and Dr. Arthur Lieberman, Professor, Department of Floriculture and Ornamental Horticulture—Cornell University. "Land Use and Natural Resource" (LUNR) Satellite inventory air-photos taken in 1968-69 were gathered to identify turfgrass areas of New York State. With magnification of the air-photos (1/10"=1 Acre) each 1/4 Acre could be examined to determine exact usage of the land.

Two objectives were kept in mind during the analysis:

1. to obtain data about the Turfgrass Industry in New York State; and
2. to obtain cost information on the maintenance of Turfgrass in New York State.

Diverse situations were categorized simply into: (1) highly maintained Turfgrass and (2) roughly maintained Turfgrass. All types of uses were considered including ground cover, soil stabilization, industrial use, recreational purposes, field crop, etc.

By obtaining help from local co-operators and field checking information for accuracy all of the information was assigned to locations on maps. Each and every house in New York State was given a number and the amount of Turfgrass determined. Areas were measured by a grid system and the measurements then placed on topographical maps. A 94% accuracy was ascertained by field checks.

The 1968-69 "LUNR" study provides a firm base figure from which measurements can be updated each year. As new houses are constructed, new parks created, new airports developed, etc., the areas can be added to the base figures.



ALMSTEAD TREE CO., INC.

For Better Trees

For Better Care of Trees, Call

ALMSTEAD

- Spraying
- Pruning
- Feeding
- Trimming



- Removals
- Topping
- Stump Removal
- 75' Bucket Truck

— Complete Golf Course Service —

Harrison
835-4668

New Rochelle
576-0193

Pelham
738-5238

Information from (1) Agricultural departments at Cornell University, (2) Official and private sources such as Corps of Engineers, National Council of Churches, National Golf Foundation, New York State Golf Association and New York State Cemetery Association, (3) New York State Agencies such as Health, Education and Housing will be continuously gathered to keep the results current.

The results of the survey indicated that the industry is far more vast than expected. Land devoted to turfgrass in New York State is determined to be:

Residential Use	763,437 Acres
Commercial	667,792
Golf Courses	80,255
Sod Farms	5,675
Public Educational Facilities	45,385
Parks and Recreational Land	80,000
Highways	43,200
Health Facilities	5,000
Correctional Facilities	1,171
Military Facilities	2,034
Airports	29,518

In summary, of the total 30 Million Acres in New York State, **1.1 Million Acres is devoted to Turfgrass**. By comparison, all other crops only total 6.0 Million Acres. 14.3 Million Acres remains as Forest Land.

What impact does the Turfgrass Industry have on the economy of New York State? Using very conservative figures, it was indicated that yearly expenditures to maintain New York

Turfgrass could be estimated as follows:

	Category of Turfgrass in New York State	Low Estimate (Millions of \$)	High Estimate (Millions of \$)
1.	Residential	191	382
2.	Industrial	24	38
3.	Commercial	78	114
4.	Public	21	62
	Totals	314	596

It was pointed out that these expenditures represent approximately $\frac{2}{3}$ of the amount spent on all agricultural crops in New York State each year. Remember also, that a cost for home labor has not been determined. All in all, it is now apparent to many of us that Turfgrass has grown to perhaps the single largest agricultural industry in New York State.

What then do we do with this information? Could we not request that our State University deploy more dollars in Turfgrass research, instruction and extension to support our industry? Could we not unite together to form a strong political voice for legislation pertinent to our industry's needs? Obviously the answers are in the affirmative! Reactivation of the New York Turfgrass Association is underway and is a positive step forward. But, this itself is not enough, it will require additional members and strong dedicated individual leadership. It can be done—let's all help to do it!

AGWAY

Turf Sales Dept.
Turf Products & Service

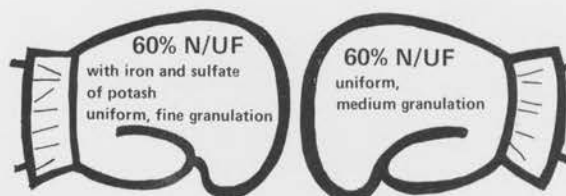
AGWAY

AGWAY PROFESSIONAL TURF FERTILIZER

NEW HEAVYWEIGHTS for a one-two punch

AGWAY
25.5.10
Green & Tee

AGWAY
20.5.10
Fairway & Athletic



FERTILIZER—LINE—SEED
MULCHES—SOIL CONDITIONERS
&
Full Line
of
Chemicals

AGWAY

—For Quotations Call—
GAYLE J. LOSEY
Commercial Sales Manager
7 Timberly Drive
Goshen, N.Y. 10924
Phone (914) 294-7823

USS Vertagreen...

A product for all reasons.



For professional turf products you just can't beat the Vertagreen lineup. And this complete array didn't just happen. It's the result of many years of experience, testing and proven use—designed and formulated to meet every need and contingency.

USS Vertagreen products contain those extra pluses that separate them from ordinary turf fertilizers—like urea-formaldehyde

for sustained, long-term nitrogen release. There's potassium sulfate to provide needed sulfur for lush growth and a dark healthy color. And iron is available in chelated and fritted form. Add a complete guarantee of secondary and micro-nutrients and you have turf products that are second to none.

And backing this line of Vertagreen products are the best turf

teams in the business—your local Vertagreen distributor and a Vertagreen turf specialist. The two work together to help plan your trailer-made turf program and keep it running smoothly. And that makes it easy for you because when you want the best you just have to see the best—and that's your local Vertagreen distributor.

A product for all reasons.



Agri-Chemicals

Division of United States Steel

P. O. Box 1685, Atlanta, Ga. 30301



MGCSA
Box 37
Rye, New York 10580

First Class



MELVIN B LUCAS JR
GARDEN CITY GOLF CLUB
315 STEWART AVE
GARDEN CITY NY 11530

A

MAIN OFFICE:
275 Knollwood Road
White Plains, N.Y. 10607
Phone: 914-948-0101

BRANCH OFFICES:

Bronxville	914-337-2271
Chappaqua	914-238-4400
Brewster	914-279-3421
Greenwich	203-661-8014
New Canaan	203-323-7245
New York	212-543-7200



CERTIFIED ARBORISTS

Full Service Company Serving Your Golf Courses With:

- PRUNING
- REMOVALS
- STUMP REMOVAL
- BOLTING & BRACING
- FERTILIZING
- BUCKET TRUCK RENTAL
- INSECT CONTROL
- SPRAYING
- TREE CONSULTANTS
- DISEASE CONTROL
- CAVITY WORK
- LIGHTNING PROTECTION

Tree Care Since 1919

