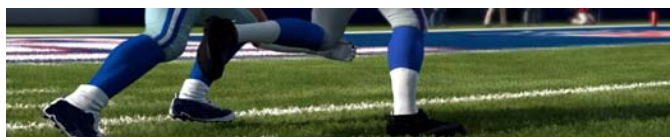


### IN THIS ISSUE

- Are football injuries more likely on certain artificial turf fields?
- **AIR TIGHT** solution extends shelf life of harvested turfgrass.
- The Big Apple's **BIG GREEN** Apple—Central Park.
- Tip of the Hat to Dr. John Stier on his new appointment.
- Believe It or Not!
- Chip and Shari Lain of Pine Island Turf Nursery say "thank you".
- How big is it **DOWN UNDER**?
- Creating a little breathing space.
- Where in the world is TPI represented?  
Evergreen Turf in Chandler, Arizona.
- Laughing at Ourselves.
- Drought devastates Houston tree population.
- **BAN-AID** (or) On Second Thought.

Volume 4 Issue 9

October 2011



According to a study presented at last year's Annual Meeting of the American Academy of Orthopaedic Surgeons (AAOS), rates for Anterior Cruciate Ligament (ACL) injuries and eversion ankle sprains (where the foot twists outward) are significantly higher in the National Football League (NFL) games played on FieldTurf, an artificial playing surface, as compared to natural grass.

The study was led by Elliott B. Hershman, MD, Chairman of Orthopaedic Surgery at Lenox Hill Hospital in New York, NY, and Chair of the NFL Injury and Safety Panel. As chair of the panel, Dr. Hershman met with trainers, team physicians and orthopaedic surgeons who together study injuries in the NFL and look for ways to prevent them.

"These injuries could be happening for myriad reasons, and we need to further explore and initiate research into exactly why this is happening," said Dr. Hershman. "What can be done to make the turf safer? Would different sports, such as soccer or age groups, such as high school football players, also sustain more ACL injuries or eversion ankle sprains on FieldTurf? What biomechanics are happening when a players' shoe meets the FieldTurf surface?

We need to find answers to these, and other questions," he added.

The data from the study (noted below) represents NFL game-related injuries that occurred to players during the 2002-2008 football seasons:

- Teams that played on FieldTurf surfaces showed an 88 percent higher ACL injury rate and a 48 percent increase in eversion ankle sprains.
- Per team game, the injury rate was 27 percent higher on FieldTurf surfaces than natural surfaces for all reported game-related lower extremity injuries.

Dr. Hershman emphasized that his study only applies to NFL players and does not offer reasons as to why more injuries occur on FieldTurf. However, the conclusions in the study are clear, and he added "Many NFL players prefer FieldTurf because it is softer and more comfortable to land on than other playing surfaces such as natural grass, but the more that NFL players play on this surface, the more prone they are to injury. It is important for athletes, coaches, athletic trainers, and fans to be aware of this issue."

An abstract of Dr. Hershman's study can be read at: <http://www3.aaos.org/education/anmeet/anmt2010/podium/podium.cfm?Event=692>



Turfgrass Producers  
International  
2 East Main Street  
East Dundee, IL 60118  
Tel: 847/649-5555  
Tel: 800/405-8873  
Fax: 847/649-5678  
Email:  
[info@TurfGrassSod.org](mailto:info@TurfGrassSod.org)  
Website:  
[www.TurfGrassSod.org](http://www.TurfGrassSod.org)  
Comments & Submissions:  
[jnovak@TurfGrassSod.org](mailto:jnovak@TurfGrassSod.org)



## AIR TIGHT solution extends shelf life of harvested turfgrass.



For years one of the biggest challenges faced by turfgrass producers is maximizing the shelf-life of harvested turf. Given that turf is a highly perishable product that can deteriorate once it's harvested, delivering it to customers as soon as possible is a big plus. Early morning harvesting and delivery schedules are often a must for timely on-site installation.

According to Rolawn Limited in Yorkshire, N. Yorkshire, England (one of Europe's largest producers of cultivated turf), factors such as air temperature, the time of the year, and the time between harvesting and installation can all impact harvested turf's deterioration. Rolawn reports that in extreme cases the temperature within the center of a pallet of turf can reach nearly 70°C (158 °F) within a matter of hours.

Extending the shelf life of harvested turf can be a big plus. One option is refrigeration, but it's an expensive alternative according to Rolawn and it doesn't effectively reduce the heat throughout the pallet.

To address other options, Rolawn called on their own experience and technical expertise of several universities, both in the UK and abroad. As a result of this collaboration they came up with a solution that extends the shelf life of harvested sod. How? By using a patented process called the Profresh® system.

The Profresh® system requires taking harvested turf and placing it in an air-tight vessel, from which air is slowly drawn out. The lower pressure has a cooling effect on the turf and also removes harmful respiration gases.

When air is let back into the pressurized vessel, it is filtered to provide optimum respiration gas conditions. This air is then drawn into the middle of each pallet of turf, due to the vacuum which has been created.

A pallet of turf is a very solid, dense mass. In the same way as heat cannot escape when it is generated, once the core of the pallet is cooled down and the gases modified, the internal conditions of the pallet will remain that way for some period of time.

Rolawn has also modified their harvesting methods to optimize the benefits provided by the Profresh® system.

How well does this patented system work? Independent tests carried out by the Sports Turf Research Institute (STRI), the UK's leading independent authority in turfgrass research agronomy, concluded that the Rolawn Profresh® system significantly extends the shelf life of Rolawn turf, meaning that it stays greener and fresher for longer, even in warm conditions.

Rolawn reports that the process provides their turf with a shelf life that is two to three times better than normal and it is achieved at a cost that's within commercially viable constraints.

Other benefits of their Profresh® system include:

- Extends the window of opportunity for selling turf in optimum condition, resulting in increased sales.
- Less deterioration of the turf while it is in route.
- Turf can be delivered direct to site the day before laying to allow for an immediate start which may benefit the schedules for some contractors and landscapers.
- Provides improved distribution efficiencies by making combined deliveries more practical thus reducing the number of required deliveries.
- Less deliveries reduce both fuel costs and CO<sub>2</sub> emissions generated by delivery vehicles.

Paul Dawson, Rolawn's Managing Director commented "In the future, this new technology will also allow us to package both full pallets and individual pieces of turf if required. This will give us greater traceability and quality control, and allow us to include sell-by dates, barcodes and branding on our turf."

The Profresh® system is fully patented in a number of international markets. Rolawn owns the trademarks and a protected logo on the Profresh® system. Elements of the machinery also have registered design rights. Furthermore, there are a number of patents pending and registered on various aspects of the system.

For more information visit : <http://www.rolawn.co.uk/profresh>

**SIDE NOTE:** Rolawn has been a member of TPI for over 30 years. In 2005, Rolawn's Chairman **Ken Dawson**, was the proud recipient of the distinguished Honorary Member Award from Turfgrass Producers International.

# The Big Apple's Big GREEN Apple



Central Park's East Meadow was a barren expanse less than a year ago.



Big rolls of turf are ready for the East Meadow's major renovation.

It may have taken a long time but the Big Apple polished itself off to a brilliant shine last month when they opened the newly restored East Meadow of New York's Central Park. The six acre site was the last of seven major lawns in the park to be restored to its past splendor.

Last summer the East Meadow was little more than an uninviting wasteland that New Yorker's referred to as a dust bowl. But now, after a \$3 million renovation that included removing 2,300 cubic yards of earth, replacing it with 3,330 cubic yards of new topsoil, new drainage and irrigation systems, new walking paths, benches, lighting and a beautiful expanse of newly sodded Kentucky bluegrass, the East Meadow was described by one New Yorker who watched the transformation as "beautiful".

The re-opening signified the conclusion of a costly undertaking that began over 30 years ago when the non-profit Central Park Conservancy took on the challenge of restoring the entire park to its past grandeur. Thirty years ago landmark buildings within the park were covered with graffiti and closed to the public. The once beautiful meadows

were little more than barren expanses of packed dirt, weeds, mini dust bowls and plenty of litter. Bridges were in need of repair as were walkways, arches and monuments.

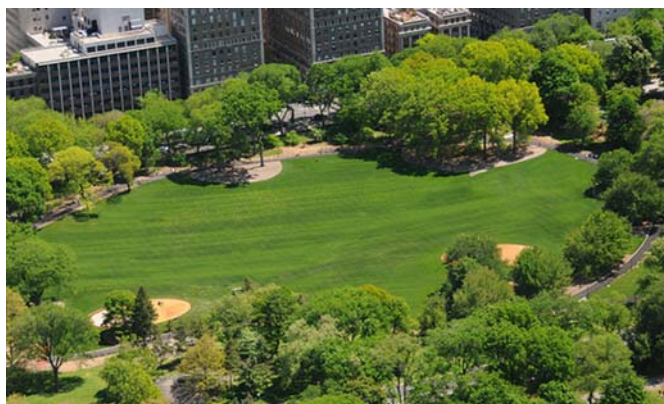
It is estimated that over \$550 million dollars was spent over the last 30 years to undertake the restoration, of which 80% came from private donations. A staff of 200 and thousands of volunteers made the seemingly impossible possible. Renovated buildings and structures, extensive landscaping with trees and natural turfgrass, restored bridges, new walkways and buildings, etc., have returned Central Park to the jewel it once was.

Alexander Garvin, a 70 year old professor of urban planning and management at Yale University and author of "Public Parks: The Key to Livable Communities" reportedly commented, "I'm a born and bred New Yorker. I grew up playing in Central Park and it has never been in better shape. Never!"

## NOTE OF INTEREST:

Central Park covers 843 acres or 6% of Manhattan's total acreage, including 250 acres of lawns, 136 acres of woodlands, and seven bodies of water covering 150 acres.

Aerial photos show the dramatic transformation of Central Park's East Meadow following major restoration.



Photos: Central Park Conservancy



## Tip of the Hat and well deserved congratulations!

### Dr. John Stier Joins College of Agricultural Sciences and Natural Resources, University of Tennessee as Assistant Dean.

We were pleased to learn that **Dr. John Stier**, a long time supporter of TPI, was appointed the new Assistant Dean for the College of Agricultural Sciences and Natural Resources (CASNR).

Dr. Stier received his Ph.D. in Crop and Soil Sciences from

Michigan State University and his M.S. degree in Plant Pathology from The Ohio State University. He is currently the Chair of the Horticulture Department and also chairs the Curriculum Study Committee for the College of Agricultural and Life Sciences at the University of Wisconsin.

Dr. Caula Beyl, Dean of the College of Agricultural Sciences and Natural Resources at UT stated she was looking forward to the opportunity of working with

Stier. "CASNR is fortunate to have John Stier join us and we look forward to having him lend his expertise in so many areas," said Beyl.

In addition to his passion and strong work ethic, Stier will be able to share new perspectives on the teaching mission and best practices gained from his experience on the academic side of three different universities, the University of Wisconsin, Michigan State University, and The Ohio State University.

Dr. Stier has been extremely helpful to TPI and he was among a very select group of Turfgrass Extension Specialists who periodically met with the TPI Public Relations Working Group to offer their advice and counsel on important issues. We wish Dr. Stier, his wife Val, and their son Tom the very best as they settle in their new surroundings.



## The Hobbit-House

It may resemble a fantasy movie set but it is an actual house built by Simon Dale of Wales. The cost for creating this unique home, excluding labor, was approximately \$4,643 (£3,000 or €3,500).

What is even more impressive is the fact that it was built with very basic tools and with volunteer help from family and friends.

This home is environmentally friendly too, from its natural grass roof to all the locally-sourced and natural materials that were taken from the surrounding woodlands.

Dale estimates that it took approximately 1000 to 1400 man hours over a 4 month period to complete. The self-styled builder created this gentle, naturally-lit family home with alternative energy sources, a lot of imagination and a sensitivity to create a dwelling that would exist in harmony with nature. The total size is approximately 538 square feet or close to 50 square meters.

FOR MORE INFORMATION GO TO:  
<http://www.simondale.net/house/index.htm>

# Believe It or Not!

"I got an advertisement in the mail today that reads: 'A single grass plant has 387 miles of roots.' I find this pretty hard to believe. Does anyone know more about this? Any comments? Does anyone know the source of this claim? I don't believe it! Googling brought me nothing relevant."

- Christine K.

The above inquiry is similar to many others that are often posted on various websites, blogs, or in e-mails received by universities, turfgrass specialists, the media, The Lawn Institute, Turfgrass Producers International, etc.

If you were to do a search on "grass roots" you would find some pretty amazing claims such as —

- A 10,000 square foot lawn will contain 6 grass plants per square inch
- 850 plants per square foot
- 8.5 million plants total
- A single grass plant has 387 miles of roots
- There are 329,000 miles of root per square foot
- 3 billion miles of roots in a 10,000 square foot lawn

At first glance these claims may seem a bit hard to believe much like the following:

If the DNA from a single human cell nucleus were stretched out, it would measure approximately six feet in length. If all of the DNA contained within the cells of a human being was stretched out and laid end to end, it would reach to the Moon and back eight thousand times.

Source: Robert Houska, Faculty, Natural Sciences, Fullerton College

The combined length of all the body's blood vessels is equal to 4 times the earth's circumference.

Source: Givelif2.org | Kidshealth.org | "The Odd Body" (Dr. Stephen Juan)



## Would you believe?

"Kentucky bluegrass per cubic inch of soil has 2,000 roots, one million root hairs and a combined root length of 4,000 feet."

## Would you believe?

"A single winter rye plant (perennial rye grass) has 13,800,000 roots with a total length of over 387 miles, and over 14 billion root hairs with total length of over 6,600 miles."



The often quoted claims regarding the density of grass roots can be found just about everywhere. They often appear as a footnote in articles; you'll find them on university extension websites and they are even referenced in numerous research papers. But who was the original source?

After a very lengthy effort we finally tracked down what appears to be the primary source:

**A Quantitative Study of the Subterranean Members of Three Field Grasses**  
**Dr. Howard J. Dittmer**  
*American Journal of Botany*  
**Vol. 25, No. 9 (Nov., 1938), pp. 654-657**  
**(article consists of 4 pages)**  
**Published by: Botanical Society of America**

In his book, "Turfgrass – Their Management and Use in the Southern Zone" by Dr. Richard L. Dumble published by Texas A&M University Press (1996) there is a reference to Dittmer's research on page 33 that reads as follows:

"To give you some idea of the magnitude of the grass root system, Dittmer (1938) showed that Kentucky bluegrass per cubic inch of soil had 2,000 roots, one million root hairs and a combined root length of over 4,000 feet. Dittmer also reported a single winter rye plant (perennial rye grass) had 13,800,000 roots with a total length of over 387 miles, root hairs over 14 billion with total length of over 6,600 miles."

As for believing it or not—That's entirely up to you.

**UPDATE:** TPI Members Feel Nature's Fury (TPI E-Newsletter September 2011)

## Chip and Sheri Lain say "thank you" for thoughts and words of support.

Several readers have contacted us regarding last month's story about Hurricane Irene and the severe flooding that impacted farms in and around Pine Island, New York. Among those farms suffering from severe flooding was Chip Lain's Pine Island Turf Nursery.

The following is an excerpt from a personal letter we received from Chip along with some photos he provided.



Chip and Shari Lain of Pine Island Turf Nursery in Pine Island New York express their thanks to fellow TPI members for their kind thoughts and support.

*"It has been like a bad dream to see our farm devastated by the flooding. We could not even get to our farm for about a week as the roads were flooded over and closed. I would travel to one of the hills near us every day to look at the farm through binoculars to check on our buildings and equipment. Luckily we didn't have any building or equipment damage. We are going to have a rough road ahead. My phone has been ringing everyday with calls of advice or just concern over how we are doing. The tremendous support we have received from our TPI friends has been very inspirational." - Chip Lain*



A river of flood water flows across a portion of Pine Island Turf Nursery.



Mud and silt cover hundreds of acres of turfgrass.



Water receding over nearby highway a week after the storm.



TPI has over 40 members in Australia, represented by turfgrass producers, educators and research scientists.



We received a note from one of our readers in Australia that read, "This would be a good illustration to share with our overseas friends, so they can understand just how *BIG* Australia really is!"

We agree. So for the benefit of those readers who aren't familiar with the land mass "Down Under" this comparison illustration of Australia and some parts of Europe might be of interest.

## Creating a little breathing space

Late last year there was an event called *Gran Semana de Lima* or Lima's Great Week in Lima, Peru. As part of the event designers were challenged to encourage new life in the streets through urban intervention.

Among a number of works presented as part of the event were several eco-friendly installations designed by architects Genaro Alva, Denise Ampuero, Gloria Andrea Rojas and industrial designer Claudia Ampuero. One installation in particular created an impromptu and beautiful public park in an unlikely place, the concrete filled Pasaje Encarnacion in the center of the capital's historic district.

The designers used portable recycled tires as planting pots and enhanced the public space with greenery made from natural grass including seating areas with natural grass cushions. The architects also made use of drought resistant plants to reduce the efforts to maintain the park in such a busy city.

This green innovation is worth following not only because it is eco-friendly and sustainable, but because it meets the common man's need for recreation spaces in a congested city life. The World Health Organization suggests at least 8 square meters of recreation space is needed for every city dweller, while it is just 1.98 square meters in Lima. If anything, the Great Week not only looked appealing it also gave people some breathing space.



Photos: Genaro Alva

Where in the world is  
TPI represented?  
**EVERYWHERE!**

An on-going series featuring photos and copy  
from TPI member websites.

**EVERGREEN Turf**

Chandler, Arizona

<http://www.evergreenturf.com/>



Evergreen Turf is Arizona's premier sod producer. From backyards to ball fields, elite golf course greens to backyard putting greens, we offer the best possible selection of turfgrass varieties for Arizona.

We offer a wide selection of turfgrass varieties perfectly suited for Arizona's climate. Whether you wish to sod a small play area for the family or an entire golf course, we can make it happen.

Evergreen Turf was established in April of 1999 by Jeff Nettleton and Jimmy Fox as a small, friendly, locally owned and operated sod farm. The idea back then was to provide homeowners and landscape contractors with an elite, golf-quality product. Since then, Evergreen Turf has become the major sod provider not just for homeowners, and landscapers, but for Arizona's demanding golf courses and sports facilities.

With more new golf courses and renovation projects than we can count, and thousands of commercial parks and home lawns installed,

Evergreen Turf has become the major, locally-owned sod supplier in Arizona.

How did such a young company rise so quickly and gain the confidence of an entire industry? The answer lies in Evergreen's extraordinary people and an overriding commitment to our customers. Nowhere can our neighbors in Arizona get better information on turfgrass from friendlier, more knowledgeable people. We invite you to browse our website for the answers to your sod questions or to call if you don't find what you are looking for. Better yet, stop by and see us at our convenient Chandler location.



Evergreen Turf is a Proud Partner of the Arizona Cardinals and a proud member of Turfgrass Producers International



**CENTRAL**

**SOD FARMS, INC.**



**"THE BEST-LAID PLANS OF  
MICE AND MEN OFTEN GO  
AWRY"**

The above statement is a play on the famous Robert Burns quote suggesting that no matter how carefully a project is planned, something may still go amiss through no fault of our own. And so it was with regrets that Central Sod Farms in Plainfield, Illinois (after months of planning) had to notify administrators, horticultural students, guest speakers and many others that their planned Field Day for earlier this month had to be postponed until May 2012.

Maria Bahena, Central Sod's Sales Director and Event Planner advised those planning to attend the event that it had to be postponed because the sod field that was intended to be used had not matured as planned due to the excessive 90 degree temperatures this past July/August.

In a letter announcing the postponement Maria wrote, "All of us at Central Sod Farms Inc. regret any inconvenience you may have incurred and we want to thank everyone who responded to our invitation. We hope to see you in May."

The TPI E-Newsletter will provide more information when it becomes available.

## Laughing at Ourselves

**Laughing at Ourselves** is a new feature intended to poke some light-hearted fun at TPI members and the TPI staff. If reader response is favorable we will make this a regular monthly feature. Let us know what you think. — [jnovak@TurfGrassSod.org](mailto:jnovak@TurfGrassSod.org)



Claus Zander of Zander Sod in Kettleby, Ontario, Canada gets a few words of encouragement from Brian Bouchard of Kingston Turf Farms, West Kingston, Rhode Island.



Fanus Cloete of Evergreen Turf in Eikenhof, South Africa gets clarification from Dr. Stacy Bonos, assistant professor, Department of Plant Biology and Pathology of Rutgers University.

Photos and captions were pre-approved by all featured individuals.

## Texas drought devastates Houston tree population

As many as 66 million trees may be lost before it's over.



In the August issue of the TPI E-Newsletter we reported on the severe drought that was devastating parts of Texas. As a follow-up we've learned that Houston is experiencing its driest year on record and the consequences have taken a tremendous toll on the areas tree population.

The local parks and recreation department has already requested funds to remove 15,000 dead trees from city parks and esplanades as a result of the drought. How bad is it? The Houston Chronicle reported that one estimate by the non-profit group, Trees for Houston, suggested the eight-county area surrounding Houston faces the loss of 10 percent of its 660 million trees.

In a report to the city council, the parks director announced that 9,330 trees had already died. The department estimates that thousands more remain inside forested areas that are difficult to reach. Heat isn't the only killer, many already weakened trees are susceptible to insect infestations and disease. The Parks and Recreation Department had asked for \$4.5 million to remove dying trees, nearly 13 times the amount the city spends on removing trees each year. Earlier this month the Houston City Council approved the funding request.

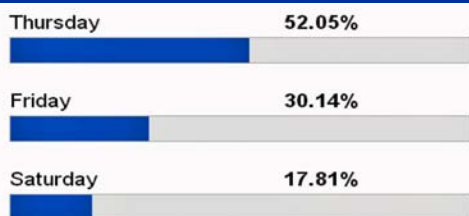
Trees for Houston, which has planted over 420,000 trees across the area over the last 28 years is calling for a grassroots watering effort, urging residents and civic associations to water trees, even those on public property.

# 2

SECOND  
SURVEY

### September 2011 Survey Results

Which day of the week would you prefer TPI to host the Field Day at our Summer Convention?



As a TPI Member your opinion matters. The new **2 Second Survey** on the TPI website is just one way to express your thoughts on a variety of issues. Survey questions change every month.

To participate go to: <http://www.turfgrassod.org/default.aspx>, click on any tab, and then click on the **2 Second Survey** icon. It's that easy. Survey results are posted immediately.



The Michigan Agricultural Statistics Service (MASS), in cooperation with the Michigan Turfgrass Foundation and the Michigan Dept. of Agriculture, conducted the first Michigan Turfgrass Survey during the winter of 2002. The following represents their findings:

### State of Michigan —Turfgrass Facts

The following facts are little known to the industry and their constituents but have a profound impact on the research and economic growth of businesses associated with turfgrass.—Michigan Turfgrass Foundation

- **1.86 Billion Dollar Industry**
- **1.89 Million Acres**
- **30,000 Plus Employees**
- **21% of Total Agricultural Acreage**
- **643 Million Dollars in Labor and Services**
- **865 Golf Courses**
- **24 Million Square Yards of Sod Sold**
- **52 Million Dollars in Lawn Care Supplies**

Free downloads: <http://www.michigan-turfgrass.org/turfgrass-facts-84/>



## TPI Midwinter Conference

January 30–February 3, 2012  
Montelucia Resort & Spa  
Scottsdale, Arizona

### TWO BIG WAYS TO SAVE!

**EARLY BIRD  
SPECIAL**



#### #1 – REGISTER EARLY

Registration is now open on-line  
**Early Bird Discount**

**SAVE — \$50.00 w/Full Conference Registration Package**

**SAVE — \$40.00 for Spouse/Companion**

**Deadline for Early Bird Discount**  
November 18, 2011.

#### #2 – STAY AT THE HOST HOTEL



Qualifications for redemption of Refund Voucher:

- Minimum three (3) nights stay at Montelucia Resort & Spa
- Full Conference Package Registration
- Hotel reservations made by 12/29/11
- One Refund Voucher per room

\*\*\*\*\*

Qualifying Refund Vouchers must be redeemed at the TPI Registration Desk during the following hours:

Thursday, February 2nd, 7:30 a.m. - 3:00 p.m.

Friday, February 3rd, 7:30 a.m. - 1:00 p.m.

(Please complete the back of card prior to redemption)

Refund Vouchers will expire on Friday, February 3rd at 1:30 p.m.  
**NO EXCEPTIONS!**

←...MARKING THE PATH TO NEW OPPORTUNITIES

For more information go to:

<http://www.turfgrassod.org/publisher/events/2011/8/30/tpi-midwinter-conference>

## TurfSide-UP

## Super Size Me



**"I don't know what I was thinking; I ordered it from Gulliver's Turf Farm in Lilliput."**

*"Whoever could make two blades of grass grow where only one grew before, would do more essential service to his country than the whole race of politicians put together."*

Jonathan Swift's "Travels of Lemuel Gulliver", first published in 1726, better known as "Gulliver's Travels".

**UPDATE:** Park District temporarily lifts pesticide ban until they can...Weed Out the Problem (TPI E-Newsletter September 2011)



## BAN-AID (or) On Second Thought

Park District considers banning their temporary reversal ban on the banning of pesticides.

As a follow-up to last month's story on the Park District of Highland Park temporarily lifting their ban on pesticides news comes that they are reconsidering that decision based on objections voiced by the community.

A press release from the Park District of Highland Park Board of Commissioners read as follows:

*"The Park District of Highland Park has received a number of questions and comments from members of the community regarding the herbicide choice, Confront®, for the proposed single application to three fields in the District. We sincerely appreciate the interest and involvement of the community in this issue, and we are aware of and understand your concerns.*

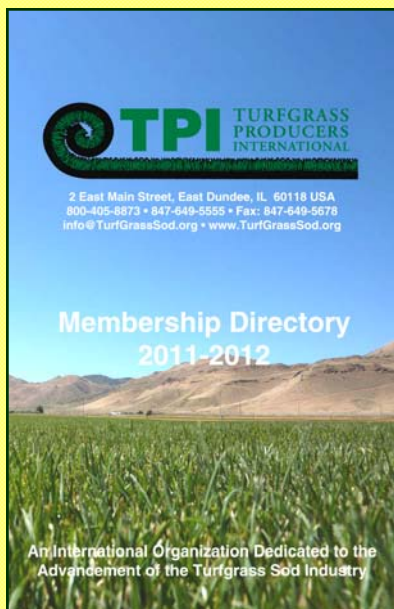
*Based on the communications that we have received, it appears that there may not be a complete picture of the actual facts and circumstances surrounding the single application of this particular product. To address these issues and alleviate concerns prior to application, the Park District is temporarily suspending the spray-*

*ing scheduled for September 16 in order to provide the community with additional information.*

*Please know that safety is our top priority. The Park District Commissioners and Staff, as well as our friends and family – including our children – spend much time on these same fields. Accordingly, it is in our collective interest as a community to make sure that we have provided a safe environment for everyone.*

*We also understand the mandate from members of the community to provide and maintain the highest quality programs, services and facilities. As representatives of the entire community, it is our obligation to balance these interests and concerns in order to provide an optimally safe and high quality recreational experience for all.*

*We respect that some may have a different point of view as to how best to strike this balance; but we are all united in our desire to preserve and protect the health, safety and welfare of our community."*



## 2011-2012 TPI Membership Cards and Membership Directory are on their way.

The 2011-2012 TPI Membership Cards have been mailed to all current TPI Members. The membership card includes your **Member ID #** and the new **Username** and **Password** for accessing the "Members Only" section on the TPI website.

If you have not received your Membership Card contact: Veronica Iwanski, Membership & Marketing Manager at 847-649-5555 or via e-mail at [viwanski@TurfGrassSod.org](mailto:viwanski@TurfGrassSod.org).

Within the next few weeks TPI members will also be receiving their copy of the 2011-2012 TPI Membership Directory.