

IN THIS ISSUE

- NO THANK YOU!
Professional soccer players don't like artificial turf.
- Licensed Grasses—The star performers at the FIFA World Cup.
- When adversity calls for diversification—GO FOR IT! Chip and Shari Lain of Pine Island Turf Nursery adapt to unforeseen circumstances.
- Members show overwhelming support to The Lawn Institute's 500 Club.
- Where in the world is TPI represented? Sporting Valley Turf Farm in Manheim, Pennsylvania.
- The EPA proposes changes in the Farm Worker Protection Standard and they want your opinion.
- TPI is TWEETING!!!
- And much MORE!



Turfgrass Producers
International
2 East Main Street
East Dundee, IL 60118
Tel: 847/649-5555
Tel: 800/405-8873
Fax: 847/649-5678

Email:

info@TurfGrassSod.org

Website:

www.TurfGrassSod.org

Comments & Submissions:

jnovak@TurfGrassSod.org

Volume 7 Issue 5

July 2014

NO THANK YOU!

Artificial Turf vs. Natural Grass

Professional soccer players express their perception towards injuries on the two playing surfaces.

By: Jim Novak

How do professional soccer players feel about the risk of injury when they compare playing on natural grass verse third generation artificial turf? According to a study compiled by BMC Sports Science, Medicine and Rehabilitation there are some strong feelings on the issue.

“Overall, 94% of the players chose artificial turf as the surface most likely to increase the risk of sustaining an injury.”

The purpose of the study was to describe professional soccer players' perceptions towards injuries, physical recovery and the effect of surface related factors on injury resulting from soccer participation on 3rd generation artificial turf compared to natural grass.

The information was collected through a questionnaire that was completed by 99 professional soccer players from 6 teams competing in Major League Soccer (MLS) during the 2011 season.



The survey revealed that the majority of the players reported that playing surface type and quality influenced the risk of sustaining an injury. Players believed that playing and training on artificial turf increased the risk of sustaining a non-contact injury as opposed to a contact injury.

The players identified three surface related risk factors on artificial turf, which they related to injuries and greater recovery times: (1) Greater surface stiffness, (2) Greater surface friction and (3) Larger metabolic cost to playing on artificial grounds.

The survey concluded that players believe that the risk of injury differs according to surface type, and that artificial turf is associated with an increased risk of non-contact injury.

Continued on next page

NO THANK YOU! - Artificial Turf vs. Natural Grass (Cont'd)

The comments that follow provide insight into how some professional soccer players view artificial turf.

“All my 3 biggest injuries have happened on [artificial] turf matches, hence why I believe natural grass is still much safer.”

“Feet stick when wet, and the ball moves too fast and your joints are put under more stress because there is no give in the [artificial] turf surface.”

“Personally, coming off back-to-back ACL tears in my left knee (both happened on [artificial] turf) I feel mentally scared to play on [artificial] turf. Even prior to the ACLs I was hesitant to play full out.”

“[Artificial] turf doesn't give like grass. If a foot gets caught it is more dangerous because the turf can't dig up to release the foot.”

“It's just proven in my experience of playing that more injuries occur on [artificial] turf. To avoid this the quality of the turf has to be very high.”

“I have always played a little cautious on [artificial] turf for fear of having a cleat stick in the turf.”

“The first time I played on the new type of field turf, I broke my 5th metatarsal in a non-contact plant.”

“Temperature on hot days zaps and dehydrates the body, hot, wet weather is difficult to play in.”

“[Artificial] turf can feel like running on sand . . . requires more physical effort.”



BMC Sports Science, Medicine and Rehabilitation is an open access, peer reviewed journal that considers articles on all aspects of sports medicine and the exercise sciences, including rehabilitation, traumatology, cardiology, physiology, and nutrition.

Authors:

Constantine CN Poulos^{1*}, John Gallucci^{2,3}, William H Gage¹, Joseph Baker¹, Sebastian Buitrago¹ and Alison K Macpherson¹

Author Affiliations

¹ School of Kinesiology and Health Science, York University, 4700 Keele St, M3J 1P3 Toronto, Canada

² JAG Physical Therapy, New Jersey, USA

³ Major League Soccer, New York City, USA

BMC Sports Science, Medicine and Rehabilitation 2014, 6:11 doi:10.1186/2052-1847-6-11

To view the full report go to:

<http://www.biomedcentral.com/2052-1847/6/11/#ins2>

Licensed Grasses— The Star Performers at FIFA World Cup!



By Jim Novak

As the FIFA World Cup continues and teams from 32 nations make an effort to showcase their endurance and athleticism in competition one thing is clear - - the quality of the playing fields. By the time the World Cup reaches its conclusion 12 stadiums will have hosted the 64 games. For more than a few behind-the-scenes observers, the star performers are underfoot, the turfgrass on which the games are played.

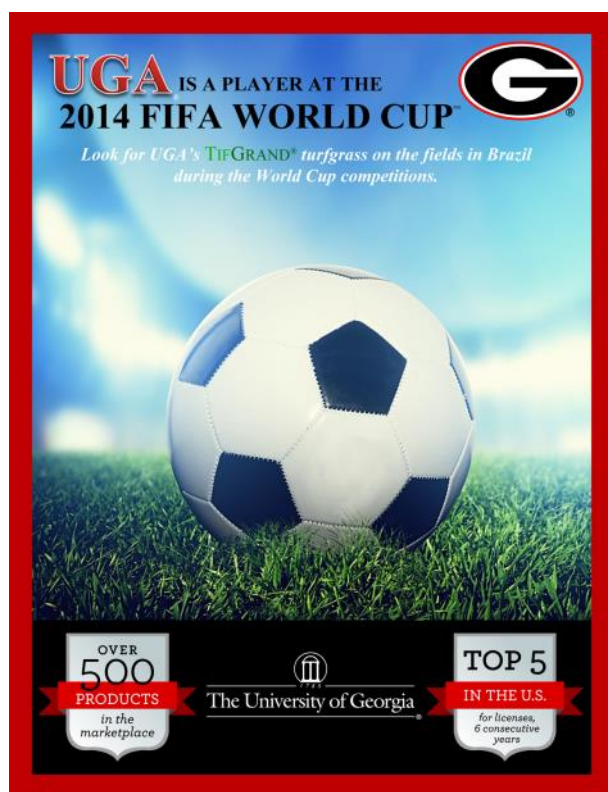
While the World Cup presents an opportunity for the best soccer players in the world to showcase their finesse and skill, it also provides a competitive setting to demonstrate how new generations of turfgrass can handle the challenge that international soccer demands.

Eleven of the twelve venues feature quality licensed turfgrasses to meet the challenge of international play. Three stadiums feature TifGrand[®], three feature Tifway 419 and five feature Celebration[®] Bermudagrass.

Overview:

TifGrand[®] is a shade-tolerant, wear-tolerant bermudagrass hybrid developed jointly by UGA (University of Georgia) and the U.S. Department of Agriculture's Agricultural Research Service (USDA-ARS).

UGA and USDA-ARS turf breeder Wayne Hanna and UGA entomologist Kris Braman developed TifGrand[®] to be shade-tolerant and resilient to wear while maintaining a deep green color. "It's wear-resistant, which is important during an event like the World Cup where the turf gets a lot of use during the tournament," said Hanna, who is a



professor in the UGA College of Agricultural and Environmental Sciences department of crop and soil sciences.

"UGA turfgrass varieties are no stranger to the world stage. The bermudagrass hybrids that have come out of UGA's Tifton-based breeding program have been used on world-class golf courses and athletics fields since the 1950s, but it's hard to top the international visibility that the World Cup provides, Hanna said. "I've traveled around the world to 40 or 50 countries, and when you ask people how they know about Georgia, it will often be because our grasses are on a local golf course, or in a stadium or on a bowling lawn that they know about."

Licensed Grasses — The Star Performers at FIFA World Cup! (Cont'd)

TifGrand® started as one of more than 27,000 test cross breeds created by Hanna in 1991. Over the past 23 years, Hanna's team has tested and retested those hybrid grasses to find varieties with the most desirable characteristics.

The TifGrand® sod being used in the Estadio Beira-Rio in Porto Alegre, Arena Pantanal in Cuiaba and the Arena da Baixada in Curitiba was licensed by UGA's Technology Commercialization Office to TPI member Green Grass in Brazil, which supplied the TifGrand for the 2014 World Cup fields.

In the U.S., TifGrand® is licensed by UGA's technology commercialization office to **The Turfgrass Group** in Cartersville, Georgia. It is grown at dozens of sod farms across the continental U.S. and Hawaii.

Tifway 419 is a bermudagrass variety developed in Tifton, Georgia by Glenn Burton of the USDA-ARS.

Sod Solutions in Mount Pleasant, South Carolina also develops and licenses a wide variety of both warm and cool-season quality turfgrasses including, Celebration® Bermudagrass, a deep blue-green grass that is being used at five World Cup stadiums including Brasília, Salvador, Belo Horizonte, Fortaleza and Estádio do Maracanã in Rio De Janeiro that will play host to the final game in the World Cup.

Roberto Gurgel, executive director of research with Sod Solutions, reported that all five venues that feature Celebration® have specific issues that required a unique grass that grows differently from most Bermudagrasses. Its ability to grow under a significant amount of shade along with its durability, exceptional recovery, softness, drought resistance and beautiful color made it ideal for the select venues in Brazil.

Celebration® Bermudagrass is an Australian Breed *Cynodon dactylon* developed by the late renowned turfgrass breeder and greenkeeper Rod Riley and was the result of more than ten years of development.



THE ROAD TO THE WORLD CUP ENDS IN CELEBRATION

CELEBRATION® BERMUDAGRASS WILL COVER THE 2014 FIFA WORLD CUP BRAZIL™.

The five facilities, scattered throughout the country, include the site of the finals, Estádio Maracanã in Rio de Janeiro. Celebration was selected for its wear tolerance, recovery and also for its ability to handle more shade than most bermuda varieties.



celebrationbermudagrass.com

Riley's turfgrasses set new standards for bermudagrasses in Australia, Asia, and the U.S. since the 1960's.

Celebration® requires less mowing than typical bermuda varieties, has tough runners, rhizomes, and deep roots that provide excellent sod strength, durability, and improved drought tolerance.

All Celebration® Bermudagrass grown and distributed across the United States is certified by local state crop certification agencies that provide rigid standards and regulations for production, harvesting, and handling, that when adhered to, ensure a genetically pure, high quality, "certified" turf grass product. Additionally, all licensed Celebration Bermuda Grass production is monitored by Sod Solutions through on-going quality control and quality assurance programs.



Support Our Sponsors

A Tip of the Hat and sincere thank you to the following sponsors for their support in helping to make the upcoming 2014 TPI Summer Convention & Field Days a Success. Show your support in Philadelphia by visiting their booths and expressing your appreciation for their support.

GOLD SPONSOR



The Leader in Precision Irrigation

FIELD DAY JUBILEE BUS SPONSOR



FIELD DAY BUS SPONSOR



FIELD DAY BREAKFAST SPONSOR



SILVER SPONSORS



BADGE HOLDER SPONSOR



BRONZE SPONSORS



TPI Field Day—2008 Eagle Lake Turf Farms, Strathmore, Alberta, CANADA Photo: Jim Novak

July 2014

WHEN ADVERSITY CALLS FOR DIVERSIFICATION -- GO FOR IT!

"Some of this land I farm my great-great grandfather farmed, so that's been a source of pride for us, to still be farming here, and take care of the land, and grow the crops here, and remain successful in the good times and the bad." - Chip Lain

By: Jim Novak

Chip and Shari Lain of Pine Island Turf Nursery in Pine Island, New York have had to weather more than their fair share of storms and flood waters, the most devastating of which was Hurricane Irene back in 2011. The impact to their farm was devastating. Acres of turfgrass became submerged in as much as six feet of water. Their farm looked more like a vast lake than a turf farm. Not only were their fields in ruin, the economy continued its tail spin, housing construction was still falling off. Things couldn't get much worse, or could they? And then along came Hurricane Sandy and she ripped a path of destruction across the East Coast.

How do you recover from such adversity? What do you do when your primary source of income disappears and you know that recovering and rebuilding from such a severe loss is going to take years? And even if you could reseed, regrow and begin harvesting turfgrass, where's the market in an area that is still trying to pick itself up and rebuild months, if not years afterwards?

Sometimes adversity calls for diversity, and the fact that Chip is a seventh generation farmer in Orange County, New York only added to the challenge and a sense of personal commitment. Chip's proud to say that his family has been farming the land in the county since the late 1700's. With that legacy comes a great deal of pride, responsibility and a certain sense of obligation to take care of the land and stay successful through the good times and the bad.

Challenging weather, the slump in the economy and the dip in housing construction resulted in Chip and Shari seeing the demand for sod slowing down. In an effort to keep the land in production the Lain's looked to other options that were available so they could continue to grow sod but have new ways in which to supplement their income.



Crop diversification provided the Lain's with a way to deal with unpredictable weather and uncertain market conditions. They decided to expand into soybean production and marketing garden soil to retail customers.

Their ability to diversify in the face of such adversity, and their success in doing so, is somewhat inspiring. We suspect that Chip and Shari would modestly respond with a casual, you just have to do what you have to do. If only it were that simple.

In early May of this year, the [Times Herald-Record @recordonline](http://www.recordonline.com) interviewed Chip for a story about how crop diversification has become a way for Pine Island farmers to deal with unpredictable weather and market conditions. You can view Chip's interview on YouTube at the link: below:

http://www.youtube.com/watch?v=wQ7_FlbjsHk



A Sincere THANK YOU



On behalf of The Lawn Institute Board of Trustees, I would like thank the TPI members who have already joined the 2014 500 Club for their generous support. The response to this year's campaign has been overwhelming and your contributions will allow The Lawn Institute to support scholarship, research and outreach to an even greater degree in the coming years.

The names of those members who have already joined the prestigious 500 Club this year are included below (listed in the order that donations were received).

We will continue to recognize 500 Club members throughout the year and at the 2015 International Education Conference and Field Day in San Diego.

If you haven't yet joined the 500 Club, we encourage you to do so now, so TLI can add your name to this list. Your show of support not only benefits our industry, it serves to benefit you.

Once again, thank you.

Melanie Stanton
Executive Director—The Lawn Institute

2014 - 500 CLUB MEMBERS THE LAWN INSTITUTE THANKS YOU!

Steve & Laurie Griffin - Saratoga Sod Farm, Inc.
Eric Heuver - Eagle Lake Professional Landscape Supply
Todd Valley Farms, Inc.
Angel Lopez - TAMANET USA
Leon Dahle - Dahle Sod Farm
Gerry Brouwer - Kesmac/Brouwer
Fred Pittillo - Turf Mountain Sod, Inc.
Richard Stunkard - Tulsa Sod & Sod Farms, Inc.
The Jaspersen Family - Jaspersen Sod Farms
The Johnson Family - Johnson Farms, Inc.
Ben Copeland, Sr. - Patten Seed/Super Sod
Ed Keeven, Jr. - Emerald View Turf Farm
Gregg Tvetene - Trebro Manufacturing, Inc.
Joe Coolings & Sons, Inc.
Don Tvetene - Trebro Manufacturing, Inc.
Steven Dover - Bucyrus Equipment Company, Inc.
Russ Nicholson - Pennington Seed, Inc.
The Youmans Family - Green Acres Turf Farm, LLC
Gary Dover - Bucyrus Equipment Company, Inc.
John Rector - Barenbrug USA
Doug Lechliden - Laytonsville Landscaping, Inc.
Mike Tvetene - Trebro Manufacturing, Inc.
Claus Zander - Zander Sod Co. Limited
Marcelo Lara Matte - Green Grass
Andy & Audrey Hutchison - Somerset Seed & Sod, Inc.

Bruce McEwen - Blue Grass Sod Farms, Ltd.
Kevin Morris - National Turfgrass Federation
Tom DeArmond - Oregon Turf & Tree Farms
Hugh Dampney - ECO Turf
Fanus Cloete - Evergreen Turf South Africa
Steve Schiedel - Greenhorizons Group
The Smith Family - Southwest Sod Inc.
Jeff Nettleton - Evergreen Turf, Inc.
Gavin Sutherland - HG Turf
Laurie Riggs - Syngenta Professional Products
Thomas Wolf - Coosa Valley Turf Farms
TAMANET USA
Stephen Struss - Tinamba Turf Company P/L
Ray LeProu - Trimax Mowing Systems
Nancy Aerni - Turf Merchants, Inc.
Duane Klundt - Grassland Oregon
Jason Pooler - Tri-Turf Sod Farms, Inc.
Peter McCuaig - Beverley Turf Farms Ltd.
Paul Dawson - Rolawn Limited
Tobey Wagne - Sod Solutions
Greg Skotnicki - Manderley Turf Products Inc.
Sod Solutions
Will Nugent - Bethel Farms
Hank Kerfoot - Modern Turf, Inc.

For information about becoming a member of The Lawn Institute's 500 CLUB please call 847-649-5555 or contact Geri Hannah at ghannah@TurfGrassSod.org.

Where in the world is TPI represented? EVERYWHERE!

An on-going series featuring photos and copy
from TPI member websites.

Sporting Valley Turf Farm
Manheim, Pennsylvania USA

<http://www.usaturf.com/sportingvalleysod/>

President and owner, Bob Hummer, founded Sporting Valley Turf Farms in 1969 with a five-acre plot on his parent's potato farm in Manheim, PA. The first load of sod was harvested using a walk behind sod cutter and hand stacked onto a small flatbed truck.

Sporting Valley has since grown to 400 acres of production in the heart of Lancaster County, one of America's richest agricultural areas.

We use a Trebro Autostack, a one man harvester that cuts and stacks the sod without any labor, the palletized sod is then loaded onto one of our covered tractor trailers and delivered to the customer without anyone handling it. Although the machinery and technology has changed, our goal has stayed the same - provide our customers with fresh-cut, palletized sod and prompt service. We continue to be Pennsylvania's largest grower of wholesale and retail turfgrass sod and offer slabs, small rolls, and Big Roll sod which is harvested and shipped on demand by our company owned truck fleet. Our sod is used on residential lawns, construction sites, golf courses, athletic fields, and various other projects throughout the Mid Atlantic region.

In 1972 Bob founded Hummer Turfgrass Systems as a specialty sports turf design/build firm. Hummer Turf is one of the most experienced firms in natural grass sports turf installations.



Matt Wimer, Director of Field Operations (left) and Bob Hummer, President of Sporting Valley Turf Farm and Hummer Sports Turf.



HUMMER
Sports Turf



A Proud Member of
Turfgrass Producers International
Since 1997



2014 TPI Summer Convention & Field Days

THE LAWN INSTITUTE

GOLF TOURNAMENT & TRICYCLE RACE SPONSORS

BUCYRUS EQUIPMENT COMPANY, INC. - GOLF & TRIKE SPONSOR

TREBRO MANUFACTURING INC. - GOLF & TRIKE SPONSOR

EMERALD VIEW TURF FARM - GOLF SPONSOR

TAMANET USA - GOLF SPONSOR

PENNINGTON SEED, INC. - GOLF SPONSOR

BARENBRUG, USA - TRIKE SPONSOR

GRASSLAND OREGON - TRIKE SPONSOR

KESMAC BROUWER TURF - TRIKE SPONSOR

TRIMAX MOWING SYSTEMS - TRIKE SPONSOR

TURF MERCHANTS, INC - TRIKE SPONSOR

TurfSide-UP



Could it be any easier? With the Lester's Leaky Liters Kit you control where you want your water to go. Just punch a hole in the liter and bingo, your all set to go. Your Lester's Leaky Liters Kit comes with a ready to punch plastic liter, an ice pick for punching holes and some duct tape to hook the liter up to a water source of your choice. Order within the next 24 hours and we'll throw in two extra rolls of duct tape.

Lester's Leaky Liters

There will be a series of interesting presentations at TPI's Summer Convention during a very special session called **Innovative Products for an Efficient Farm.**

The TPI staff received numerous submissions of innovative products and services, many of which were exciting and sure to benefit members; but not all submissions received were accepted.

For example, the product featured on the left, identified as an *Innovative & Cost Efficient Sprinkler System* manufactured by **Lester's Leaky Liters** in AquaDuck, Mississippi was rejected.

If by chance you would like to place an order anyway, feel free to call Lester at 555-555-AQUA. —JN

IF YOU DON'T SPEAK-UP NO ONE IS GOING TO HEAR YOU!

I am reaching out to all U.S. TPI members on an important and time-sensitive matter: the United States Environmental Protection Agency (EPA) is proposing some changes to the agricultural Worker Protection Standard (WPS). These changes focus on pesticide safety training, warning signage and hazard communications, worker age restrictions, no-entry buffer areas, personal protective equipment and other issues.

The proposed changes include some onerous restrictions and demands on farm owners and managers that could have an impact on agriculture production expenses and productivity. Your TPI board will be submitting feedback to the EPA on the proposed changes and public input is welcome through **August 18, 2014**. I encourage you to read the proposed changes and ask you to provide comments from a producer's perspective.

Our position will be much stronger and more persuasive coming from many independent sources than from a single entity. If you would like a copy of the comments that TPI is submitting to the EPA, please contact me at mstanton@TurfGrassSod.org.

Additional information about the EPA's proposed changes to the Agricultural Worker Protection Standards and instructions about how you can submit your comments can be found at: <http://www.epa.gov/oppfead1/safety/workers/proposed/index.html>.

Please do not allow this opportunity to pass without expressing your concerns.

Kind regards,
Melanie Stanton
 Executive Director
 Turfgrass Producers International



Proposed Changes to the Farm Worker Protection Standard

The Environmental Protection Agency issued proposed changes to the Agricultural Worker Protection Standard (WPS) to increase protections from pesticide exposure for the nation's two million agricultural workers and their families. Proposed changes:

- Annual mandatory trainings (rather than once every 5 years) to inform farm workers about the protections they are afforded under the law, including restrictions on entering pesticide-treated fields and surrounding areas, decontamination supplies, access to information and use of personal protective equipment. Expanded trainings will include instructions to reduce take-home exposure from pesticides on work clothing and other safety topics.
- Expanded mandatory posting of no-entry signs for the most hazardous pesticides. The signs prohibit entry into pesticide-treated fields until residues decline to a safe level.
- First-time ever minimum age requirement: Children under 16 will be prohibited from handling pesticides, with an exemption for family farms.
- New no-entry 25-100 foot buffer areas surrounding pesticide-treated fields will protect workers and others from exposure from pesticide overspray and fumes.
- Mandatory record-keeping to improve states' ability to follow-up on pesticide violations and enforce compliance. Records of application-specific pesticide information as well as farmworker training and early-entry notification must be kept for two years.

Additional Proposed Changes

- Personal Protection Equipment (respirator use) must be consistent with the Occupational Safety & Health Administration standards for ensuring respirators are effective, including fit test, medical evaluation and training.
- Requirement to make available to farm workers or their advocates (including medical personnel) information specific to the pesticide application, including the pesticide label and Safety Data Sheets.
- Additional changes make the rule more practical and easier to comply with for farmers.
- Continues the exemptions for family farms.

For more information: www.epa.gov/pesticides/
 February 20, 2014



THE VOTES ARE IN AND THE WINNING TPI TWITTER HANDLE IS



@TPITurfNews
@TPIGreenSideUp
@TPITurfTalk
@TurfTweets
@TPIWeSpeakTurf

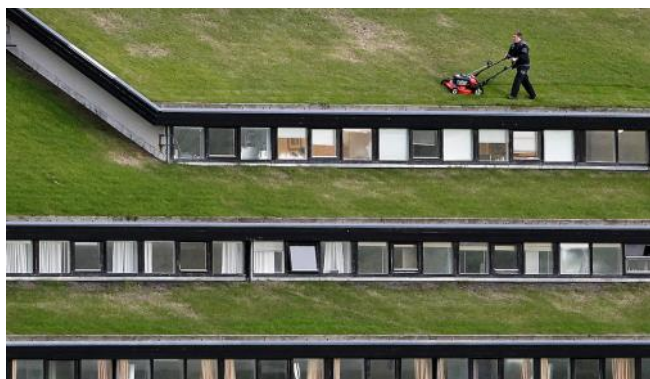
TPI members have voted and among the top five entries they voted **@TPITurfTalk** as the new TPI Twitter Handle.

Congratulations to Melissa Tischer for submitting the winning entry. Melissa will receive a US\$25.00 Amazon gift card and the glory of seeing the name she suggested on each TPI tweet! Everybody who entered the contest will be receiving a Money Savings Card from The Lawn Institute with US\$10.00 pre-loaded to their online account.

Our sincere thanks to everyone who submitted an entry and to all those members who took the time to vote.

<https://twitter.com/TPITurfTalk>

A CUT ABOVE THE REST



Worker mowing the grass on the roof of a government building near Torshavn, the capital of the Faroe Islands, (Denmark).

PHOTO: Bob Strong/Reuters

Philadelphia



JOIN US



International Turfgrass

ISSN 2312-6558

The Newsletter of the International Turfgrass Society

May 2014 Edition

The recent edition of the International Turfgrass Society newsletter reprinted two articles provided by TPI — “The Positive Impact of Turfgrass on our Environment is Often Overlooked - - If not Grossly Misunderstood” and “Dr. Ali Harivandi Receives Turfgrass Educator Award of Excellence from Turfgrass Producers International.”



SEED WITH CONFIDENCE

Because your business depends on the purest seed varieties, our business is dedicated to them.

